

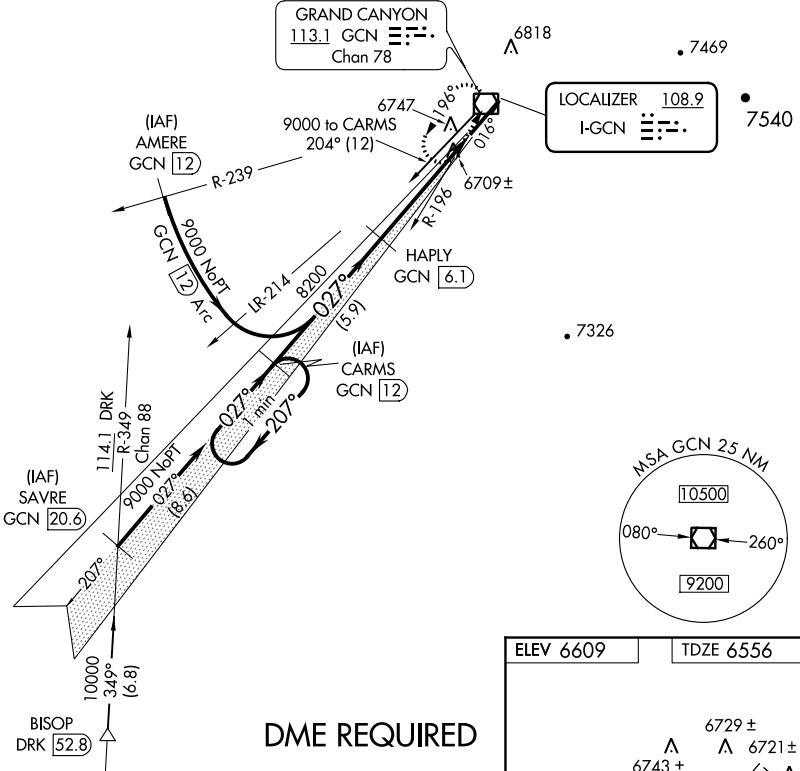
# ILS or LOC/DME RWY 3

GRAND CANYON NATIONAL PARK (GCN)

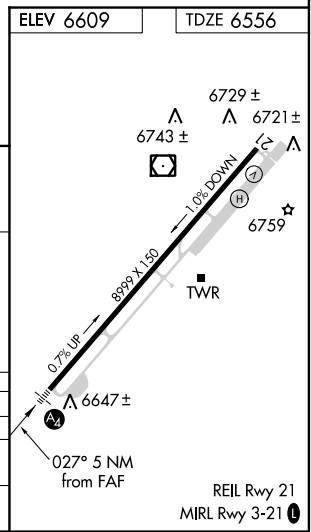
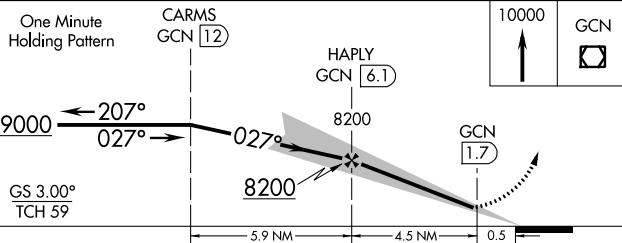
LOC I-GCN <b>108.9</b>	APP CRS <b>027°</b>	Rwy Idg <b>8999</b>
TDZE <b>6556</b>		Apt Elev <b>6609</b>

<p><b>DME</b> from GCN VOR/DME. Simultaneous reception of I-GCN and GCN DME required. Inoperative table does not apply to S-LOC 3 Cat C.</p>	<p><b>MALS</b></p>	<p><b>MISSED APPROACH:</b> Climb to 10000 direct GCN VOR/DME and hold.</p>
--	--------------------	--

<p>ATIS <b>124.3</b></p>	<p>LOS ANGELES CENTER <b>124.85 319.2</b></p>	<p>CANYON TOWER ★ <b>119.0 (CTAF)</b></p>	<p>GND CON <b>121.9</b></p>	<p>UNICOM <b>122.95</b></p>
------------------------------	---	---	---------------------------------	---------------------------------



**DME REQUIRED**



CATEGORY	A	B	C	D
S-ILS 3	6765-¾		209 (200-¾)	
S-LOC 3	6960-¾ 404 (400-¾)		6960-1¼ 404 (400-1¼)	
CIRCLING	7140-1 531 (600-1)		7160-1½ 611 (700-2)	

SW-4, 08 JAN 2015 to 05 FEB 2015

SW-4, 08 JAN 2015 to 05 FEB 2015

REIL Rwy 21  
MIRL Rwy 3-21

# RNAV (GPS) RWY 3

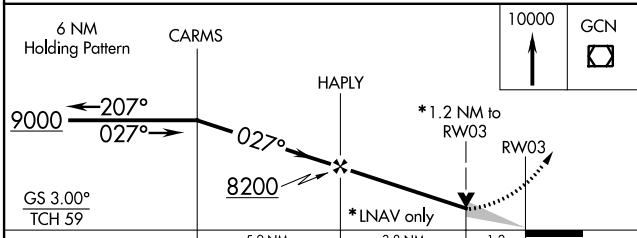
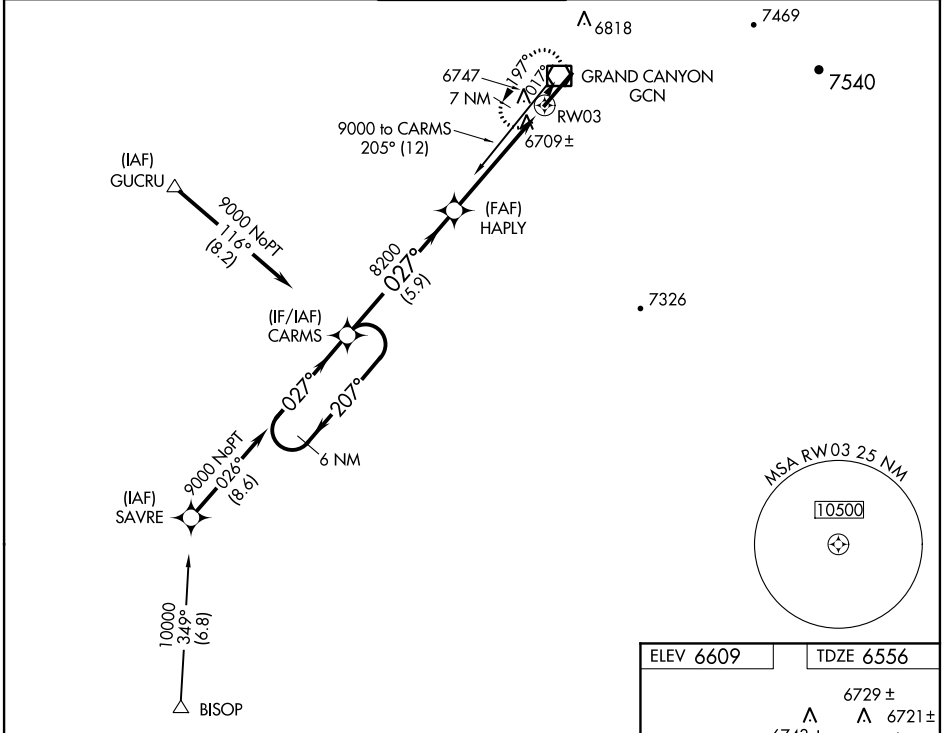
GRAND CANYON NATIONAL PARK (GCN)

APP CRS <b>027°</b>	Rwy Idg <b>8999</b>
	TDZE <b>6556</b>
	Apt Elev <b>6609</b>

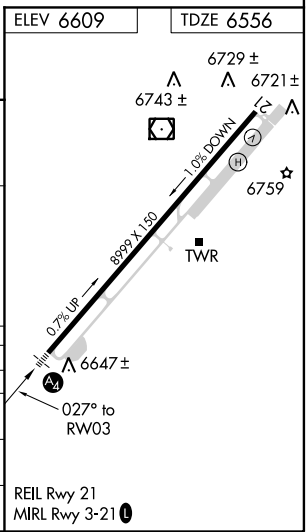
**▼** GPS or RNP-0.3 required. DME/DME RNP-0.3 NA.  
**▲ NA** Baro-VNAV NA below -28°C (-18°F).  
 Inoperative table does not apply to LNAV Cat C.

**MALS**  
 MISSED APPROACH: Climb to 10000 direct GCN VOR/DME and hold.

ATIS <b>124.3</b>	LOS ANGELES CENTER <b>124.85 319.2</b>	CANYON TOWER* <b>119.0(CTAF) 0</b>	GND CON <b>121.9</b>	UNICOM <b>122.95</b>
----------------------	---	---------------------------------------	-------------------------	-------------------------



CATEGORY	A	B	C	D
GLS PA DA	NA			
LNAV/VNAV DA	6960-1½		404 (400-1½)	
LNAV MDA	6960-¾		404 (400-¾)	
CIRCLING	7140-1½		7220-2	



SW-4, 08 JAN 2015 to 05 FEB 2015

SW-4, 08 JAN 2015 to 05 FEB 2015

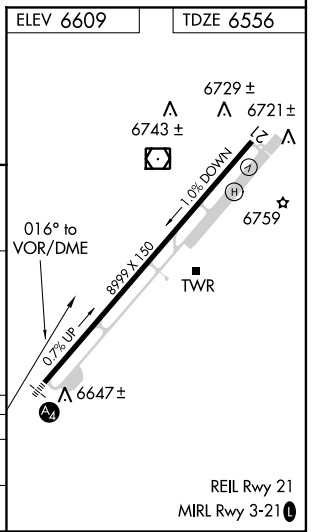
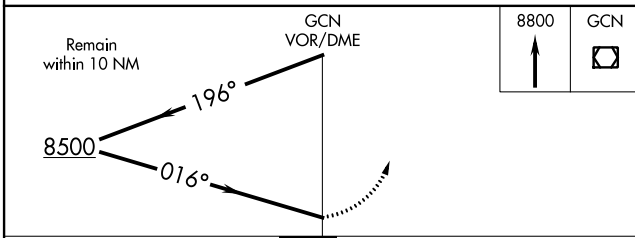
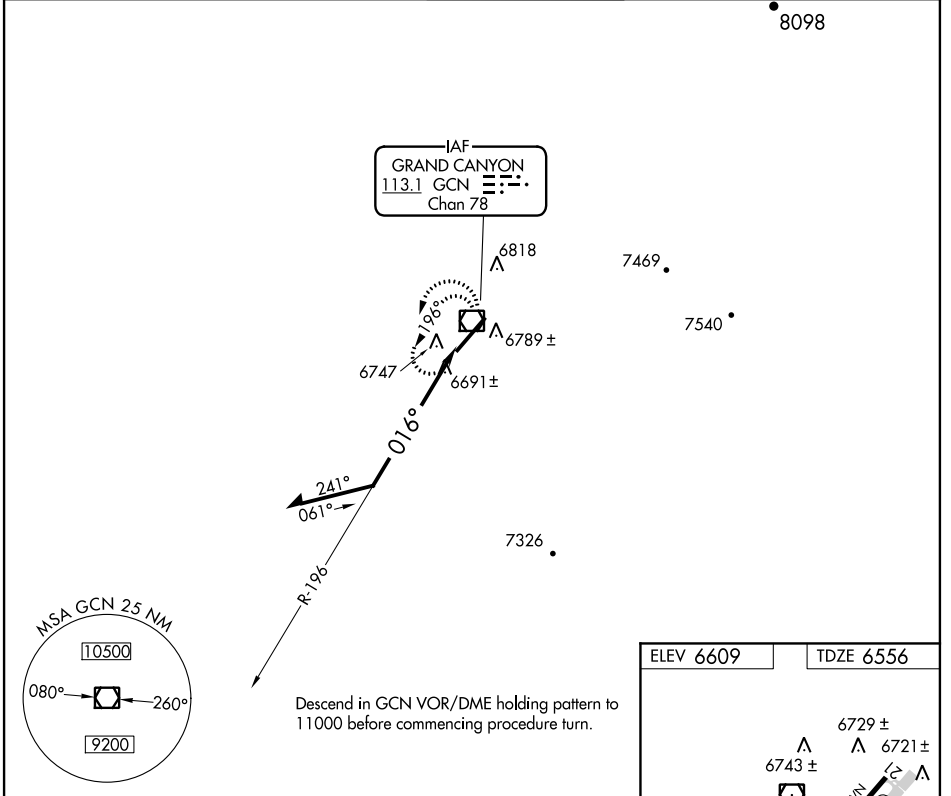
# VOR RWY 3

GRAND CANYON NATIONAL PARK (GCN)

VOR/DME GCN <b>113.1</b> Chan <b>78</b>	APP CRS <b>016°</b>	Rwy Idg <b>8999</b> TDZE <b>6556</b> Apt Elev <b>6609</b>
---	------------------------	---

Inoperative table does not apply to S-3 Cat C.	MALS 	MISSED APPROACH: Climb to 8800 in GCN VOR/DME holding pattern.		
		ATIS <b>124.3</b>	LOS ANGELES CENTER <b>124.85 319.2</b>	CANYON TOWER ★ <b>119.0</b> (CTAF)

UNICOM <b>122.95</b>
-------------------------



CATEGORY	A	B	C	D
S-3	7100-¾ 544 (600-¾)	7100-1½ 544 (600-1½)	7100-1¾ 544 (600-1¾)	7100-2 544 (600-2)
CIRCLING	7140-1 531 (600-1)	7160-1½ 551 (600-1½)	7220-2 611 (700-2)	

SW-4, 08 JAN 2015 to 05 FEB 2015

SW-4, 08 JAN 2015 to 05 FEB 2015