

WAAS CH 77502 W14A	APP CRS 136°	Rwy Idg TDZE Apt Elev	4202 520 539
--	------------------------	-----------------------------	---

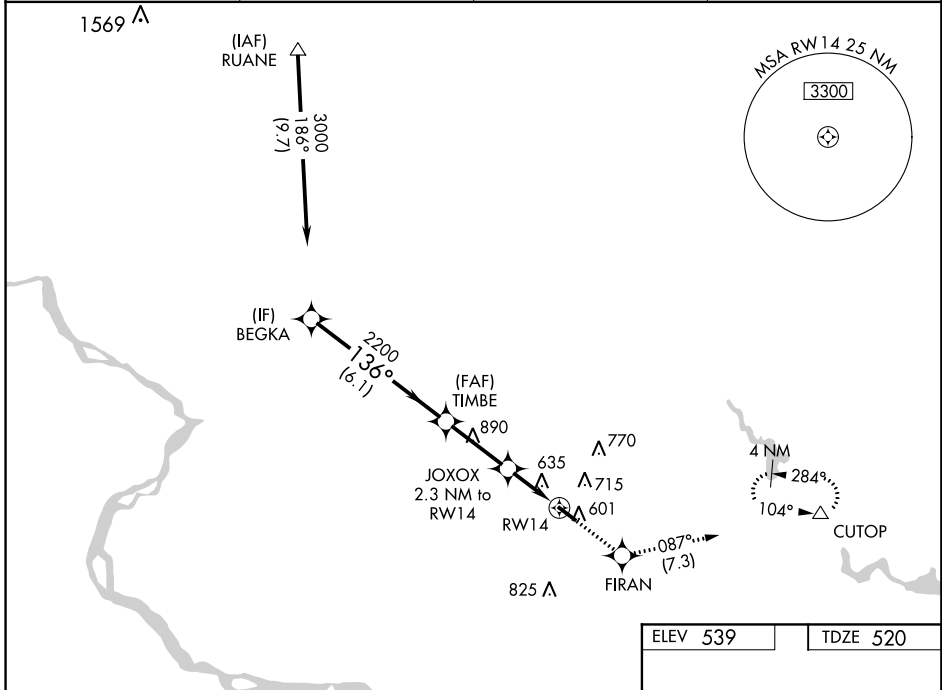
RNAV (GPS) RWY 14

MONTGOMERY COUNTY AIRPARK (GAI)

⚠ Baro-VNAV NA when using Washington Dulles Intl altimeter setting. For uncompensated Baro-VNAV systems, LNAV/VNAV NA below -16°C (4°F) or above 36°C (96°F).
⚠ When local altimeter setting not received, use Washington Dulles Intl altimeter setting and increase all DA/MDAs 80 feet and all visibilities ¼ mile.
 DME/DME RNP-0.3 NA. Helicopter visibility reduction below 1 SM NA.

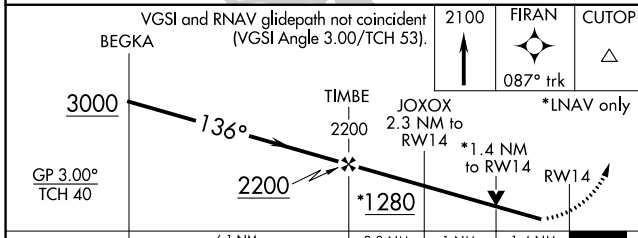
MISSED APPROACH:
 Climb to 2100 direct
 FIRAN and on track
 087° to CUTOP and hold.

AWOS-3 128.275	POTOMAC APP CON 128.7 307.9	CLNC DEL 121.6	UNICOM 123.075 (CTAF) 📻
--------------------------	---------------------------------------	--------------------------	--

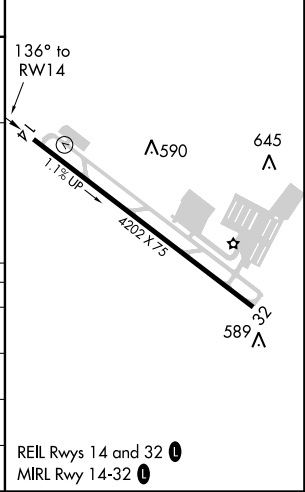


NE-3: 27 APR 2017 to 25 MAY 2017

NE-3: 27 APR 2017 to 25 MAY 2017



ELEV 539	TDZE 520
----------	----------



CATEGORY	A	B	C	D
LPV DA	789-1 269 (300-1)			
LNAV/ VNAV DA	919-1½ 399 (400-1½)			
LNAV MDA	980-1 460 (500-1)	980-1¼ 460 (500-1¼)		980-1½ 460 (500-1½)
CIRCLING	1020-1 481 (500-1)	1020-1½ 481 (500-1½)		1100-2 561 (600-2)

REIL Rwy 14 and 32 **📻**
 MRL Rwy 14-32 **📻**

RNAV (GPS)-A
MONTGOMERY COUNTY AIRPARK (GAI)

APP CRS 220°	Rwy Idg TDZE Apt Elev	N/A N/A 539
------------------------	-----------------------------	--

▼ DME/DME RNP-0.3 NA. When local altimeter setting is not received use Washington Dulles Intl altimeter setting and increase all MDA 80 feet and visibility Cat C ¼ SM.

MISSED APPROACH: Climbing right turn to 3000 direct EMI VORTAC and hold.

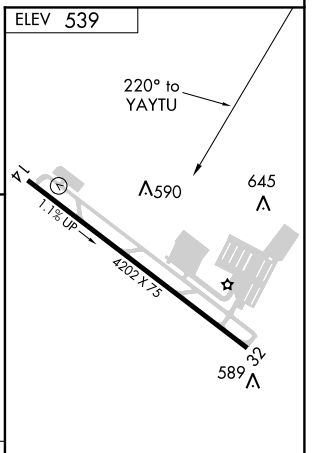
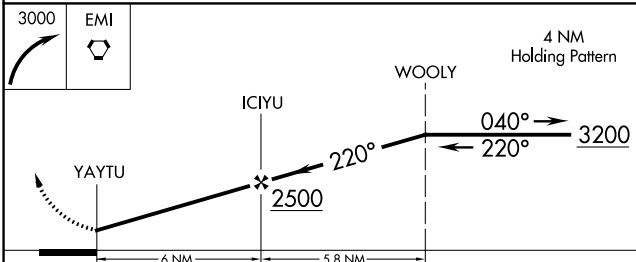
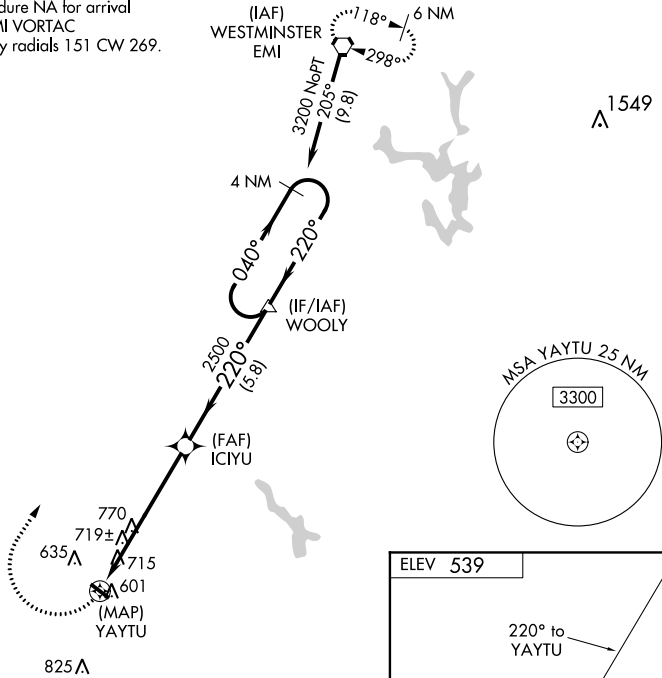
AWOS-3
128.275

POTOMAC APP CON
128.7 307.9

CLNC DEL
121.6

UNICOM
123.075 (CTAF) 0

Procedure NA for arrival on EMI VORTAC airway radials 151 CW 269.



CATEGORY	A	B	C	D
CIRCLING	1080-1	541 (600-1)	1080-1½ 541 (600-1½)	1100-2 561 (600-2)

REIL Rwy 14 and 32 0
MIRL Rwy 14-32 0

NE-3: 27 APR 2017 to 25 MAY 2017

NE-3: 27 APR 2017 to 25 MAY 2017

VOR FDK 109.0	APP CRS 155°	Rwy Idg 4202 TDZE 523 Apt Elev 538
-------------------------	------------------------	---

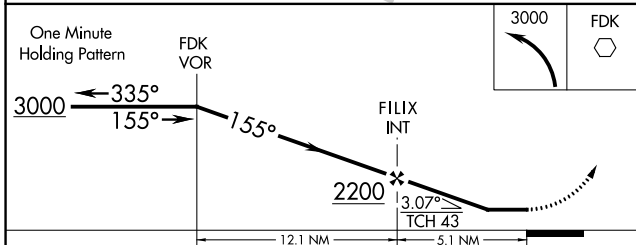
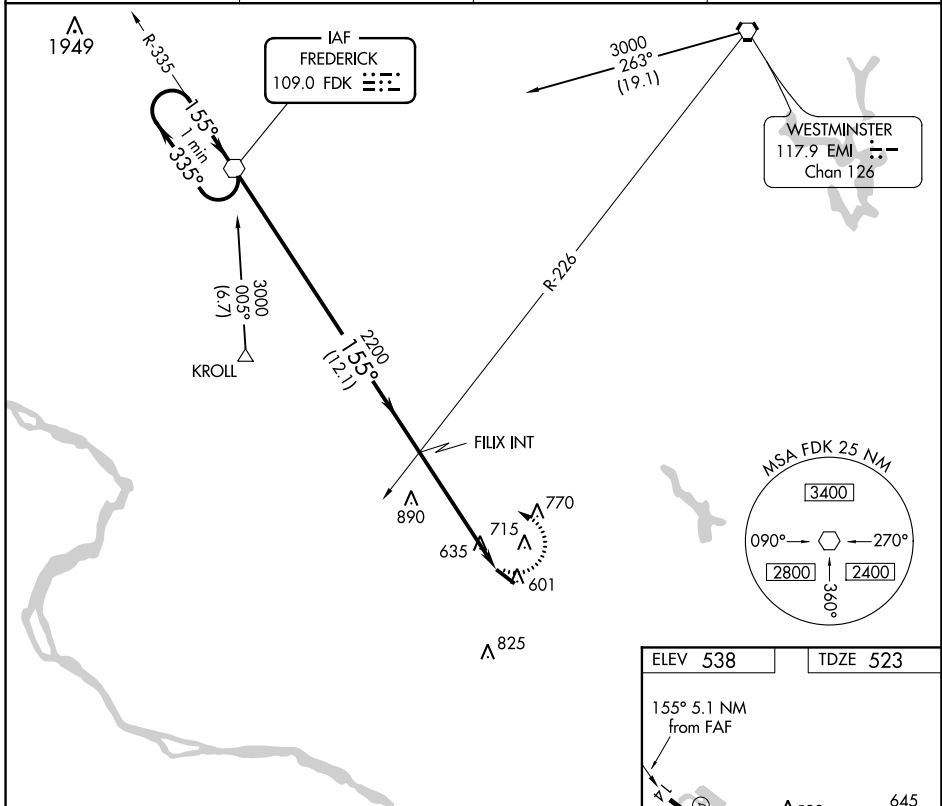
VOR RWY 14

MONTGOMERY COUNTY AIRPARK (GAI)

⚠ Circling to Rwy 32 NA at night.
If local altimeter not received, use Washington Dulles
⚠ NA Int'l altimeter setting and increase all MDAs 80 feet.

MISSED APPROACH: Climbing left turn to 3000
direct FDK VOR and hold.

AWOS-3 128.275	POTOMAC APP CON 128.7 307.9	CLNC DEL 121.6	UNICOM 123.075 (CTAF) 📻
--------------------------	---------------------------------------	--------------------------	--



ELEV 538	TDZE 523
----------	----------

The inset diagram shows the final approach to RWY 14. It starts at 155° heading, 5.1 NM from the Final Approach Fix (FAF). The approach is at 155° heading, 1.1/2 UP. The runway is 4002 x 75. The diagram also shows the runway 14-32 and various altitudes (590, 645, 589).

REIL Rwys 14 and 32 📻					
MIRL Rwy 14-32 📻					
FAF to MAP 5.1 NM					
Knots	60	90	120	150	180
Min:Sec	5:06	3:24	2:33	2:02	1:42

CATEGORY	A	B	C	D
S-14	1200-1	677 (700-1)	1200-2 677 (700-2)	1200-2 1/4 677 (700-2 1/4)
CIRCLING	1200-1	662 (700-1)	1200-2 662 (700-2)	1200-2 1/4 662 (700-2 1/4)

NE-3: 27 APR 2017 to 25 MAY 2017

NE-3: 27 APR 2017 to 25 MAY 2017