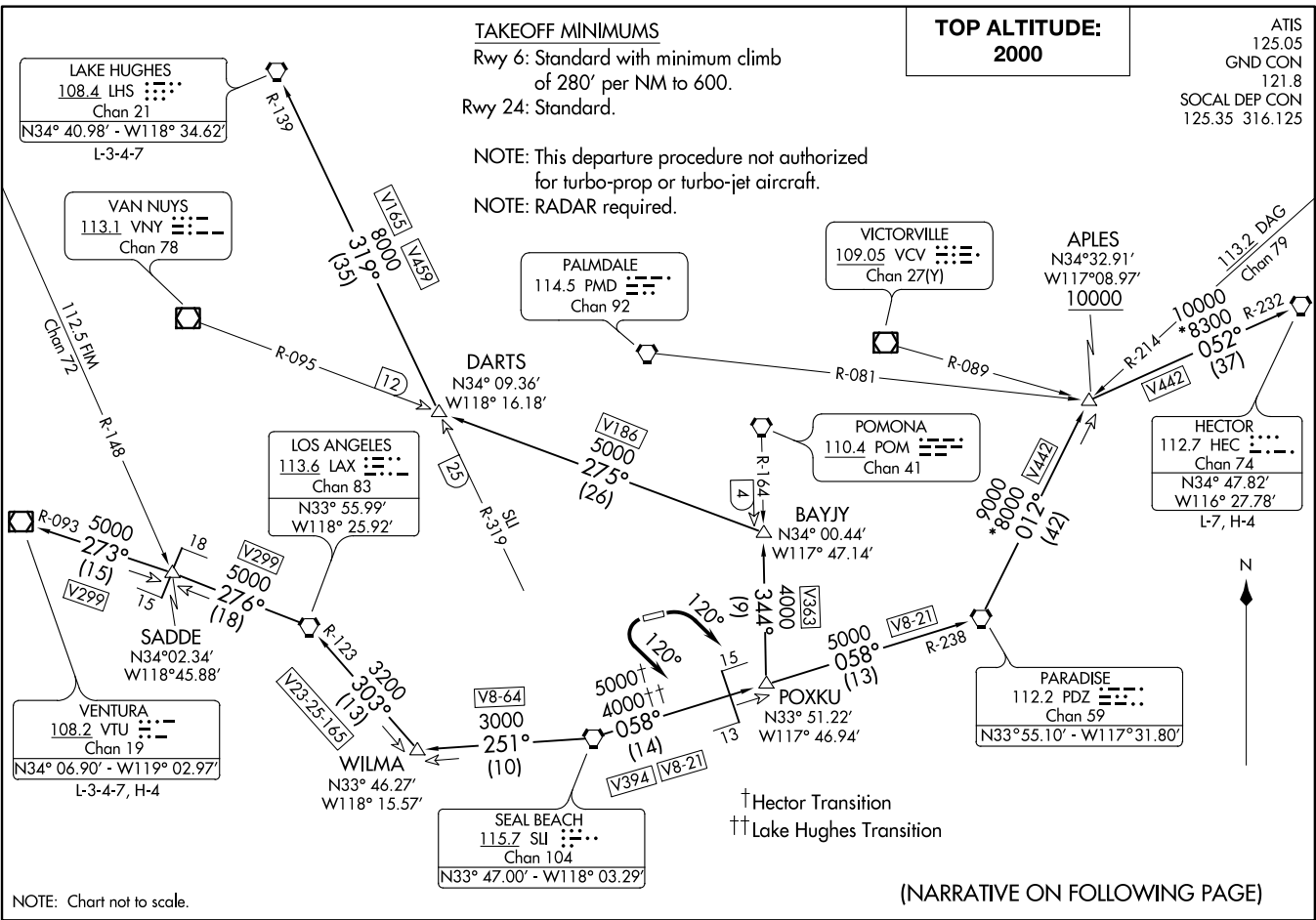


ANAHEIM NINE DEPARTURE
(ANAHM9.SLI) 27APR17

FULLERTON, CALIFORNIA
FULLERTON MUNI (F.T.I.)



(ANAHM9.SLI) 17285
ANAHEIM NINE DEPARTURE

AL-51.36 (FAA)

FULLERTON MUNI (F.T.I.)
FULLERTON, CALIFORNIA

NOTE: Chart not to scale.



DEPARTURE ROUTE DESCRIPTION

TAKEOFF RUNWAY 6: Turn right heading 120° for vectors to SLI VORTAC.
Thence. . . .

TAKEOFF RUNWAY 24: Turn left heading 120° for vectors to SLI VORTAC.
Thence. . . .

. . . .on (transition) or (assigned route). Maintain 2000 and expect filed altitude
10 minutes after departure.

HECTOR TRANSITION (ANAHM9.HEC): From over SLI VORTAC on SLI R-058 and
PDZ R-238 to PDZ VORTAC, then on PDZ R-012 to APLES, then on HEC R-232
to HEC VORTAC.

LAKE HUGHES TRANSITION (ANAHM9.LHS): From over SLI VORTAC on SLI R-058
and PDZ R-238 to POXKU, then on POM R-164 to BAYJY, then on VNY R-095
to DARTS, then on LHS R-139 to LHS VORTAC.

VENTURA TRANSITION (ANAHM9.VTU): From over SLI VORTAC on SLI R-251 to
WILMA, then on LAX R-123 to LAX VORTAC, then on LAX R-276 to SADDE, then
on VTU R-093 to VTU VOR/DME.

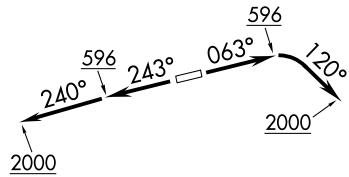
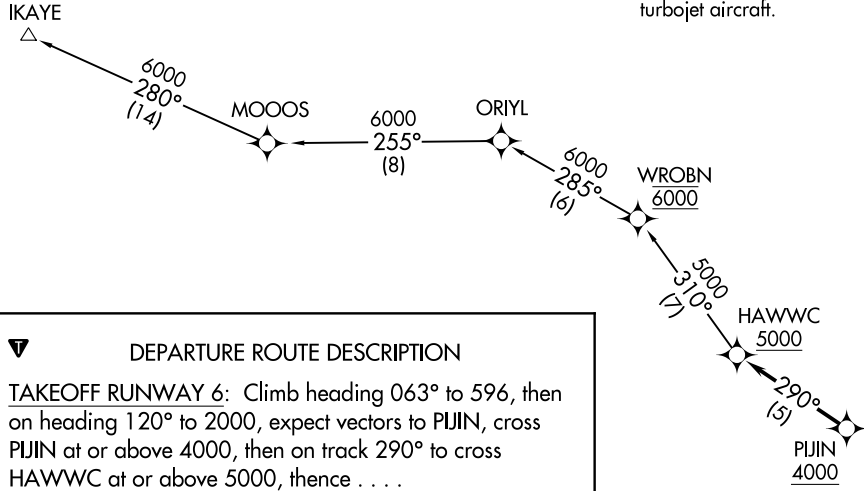
SW-3, 07 DEC 2017 to 04 JAN 2018

SW-3, 07 DEC 2017 to 04 JAN 2018

**TOP ALTITUDE:
6000**

ATIS
125.05
GND CON
121.8
SOCAL DEP CON
124.65 316.125

NOTE: RADAR required.
NOTE: RNAV 1.
NOTE: DME/DME/IRU or GPS required.
NOTE: This procedure not authorized for
turbojet aircraft.



DEPARTURE ROUTE DESCRIPTION

TAKEOFF RUNWAY 6: Climb heading 063° to 596, then on heading 120° to 2000, expect vectors to PIJIN, cross PIJIN at or above 4000, then on track 290° to cross HAWWC at or above 5000, thence

TAKEOFF RUNWAY 24: Climb heading 243° to 596, then on heading 240° to 2000, expect vectors to PIJIN, cross PIJIN at or above 4000, then on track 290° to cross HAWWC at or above 5000, thence

. . . . on (transition). Maintain 6000. Expect higher altitude 10 minutes after departure.

IKAYE TRANSITION (HAWWC2.IKAYE)

TAKEOFF MINIMUMS

Rwy 6: Standard with minimum climb of 280 feet per NM to 600.

Rwy 24: Standard.

NOTE: Chart not to scale.

HAWWC TWO DEPARTURE (RNAV)
(HAWWC2.HAWWC) 120CT17

(HAWWC2.HAWWC) 17285
HAWWC TWO DEPARTURE (RNAV)

FULLERTON, CALIFORNIA
FULLERTON MUNI (F71)

FULLERTON MUNI (F71)
FULLERTON, CALIFORNIA

REDHL TWO DEPARTURE (RNAV)
(REDHL2.PLZZA) 120CT17

FULLERTON, CALIFORNIA
FULLERTON MUNI (F.T.I.)

(REDHL2.PLZZA) 17285
REDHL TWO DEPARTURE (RNAV)

AL-5136 (FAA)

FULLERTON MUNI (F.T.I.)
FULLERTON, CALIFORNIA

ATIS 125.05
GND CON 121.8
SOCAL DEP CON 124.65 316.125

DEPARTURE ROUTE DESCRIPTION

TAKEOFF RUNWAY 6: Climb heading 063° to 596, then right turn heading 120° to 2000, expect vectors to REDHL, cross REDHL at or above 2800, then on track 039° to PLZZA, thence

TAKEOFF RUNWAY 24: Climb heading 243° to 596, then left turn heading 120° to 2000, expect vectors to REDHL, cross REDHL at or above 2800, then on track 039° to PLZZA, thence

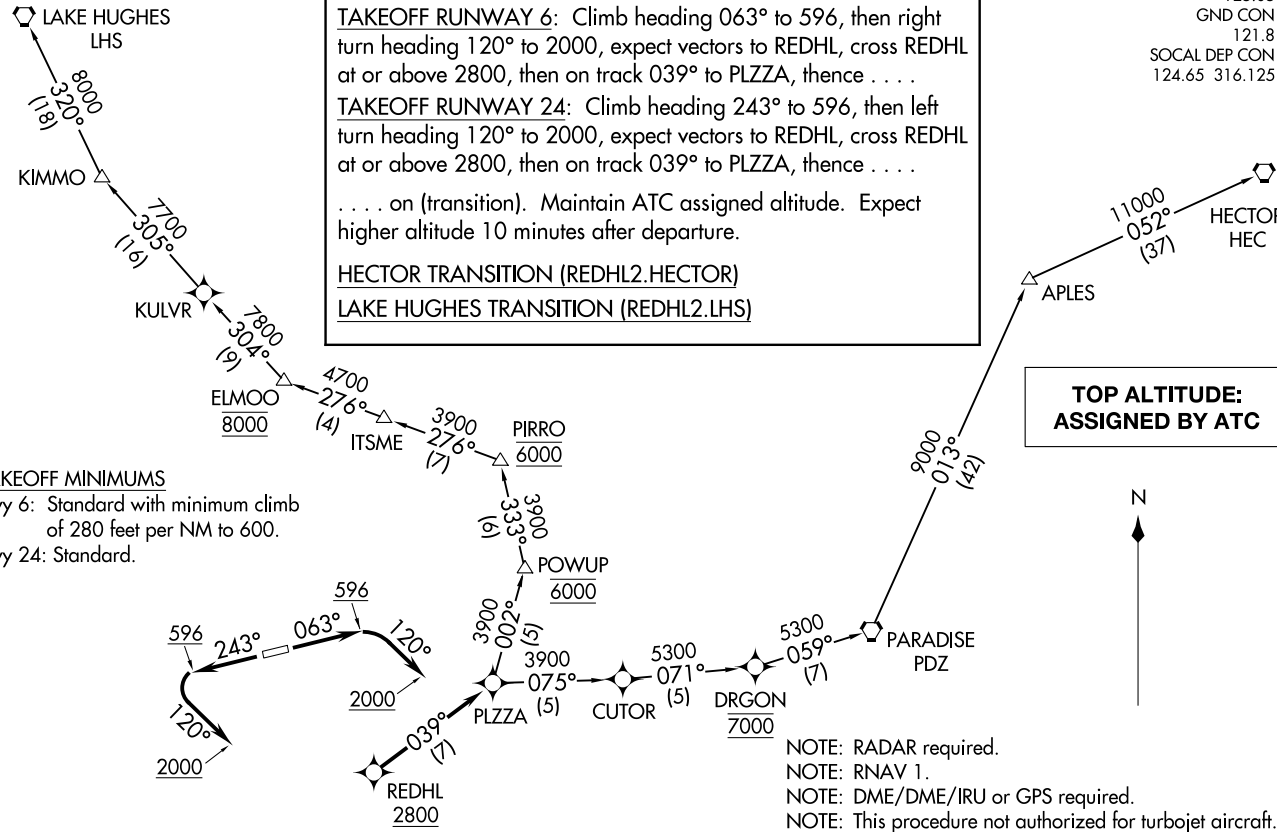
. . . . on (transition). Maintain ATC assigned altitude. Expect higher altitude 10 minutes after departure.

HECTOR TRANSITION (REDHL2.HECTOR)

LAKE HUGHES TRANSITION (REDHL2.LHS)

**TOP ALTITUDE:
ASSIGNED BY ATC**

TAKEOFF MINIMUMS
Rwy 6: Standard with minimum climb of 280 feet per NM to 600.
Rwy 24: Standard.



- NOTE: RADAR required.
- NOTE: RNAV 1.
- NOTE: DME/DME/IRU or GPS required.
- NOTE: This procedure not authorized for turbojet aircraft.
- NOTE: LAKE HUGHES TRANSITION not authorized for turboprop aircraft.

NOTE: Chart not to scale.