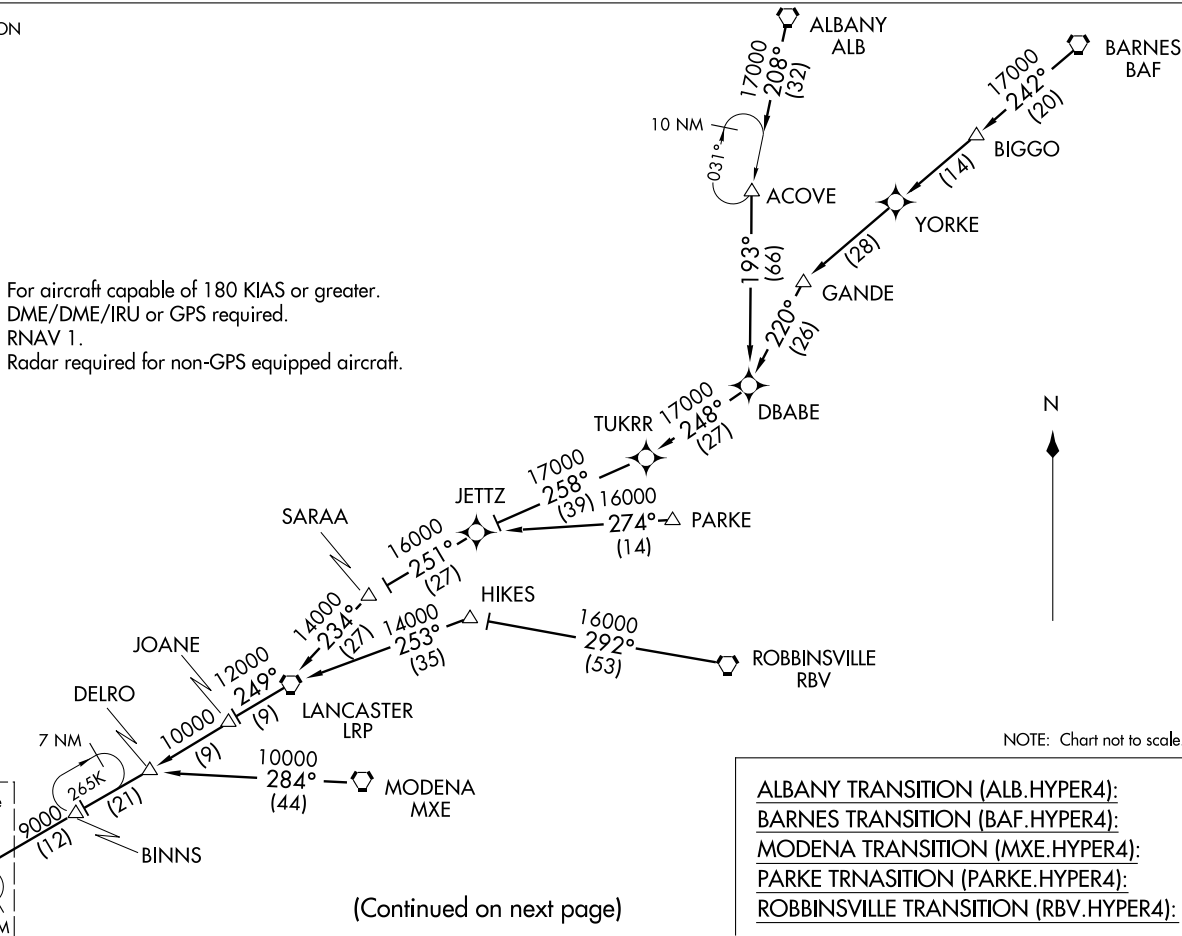


(HYPER.HYPER4) 12096

HYPER FOUR ARRIVAL (RNAV) Transition Routes

POTOMAC APP CON
126.1 338.25
DULLES ATIS
134.85

NOTE: For aircraft capable of 180 KIAS or greater.
NOTE: DME/DME/IRU or GPS required.
NOTE: RNAV 1.
NOTE: Radar required for non-GPS equipped aircraft.



NOTE: Chart not to scale.

- ALBANY TRANSITION (ALB.HYPER4):
- BARNES TRANSITION (BAF.HYPER4):
- MODENA TRANSITION (MXE.HYPER4):
- PARKE TRNASITION (PARKE.HYPER4):
- ROBBINSVILLE TRANSITION (RBV.HYPER4):

(Continued on next page)

WASHINGTON, DC

WASHINGTON, DC

(HYPER.HYPER4) 12096
ST-5100 (FAA)
HYPER FOUR ARRIVAL (RNAV) Transition Routes

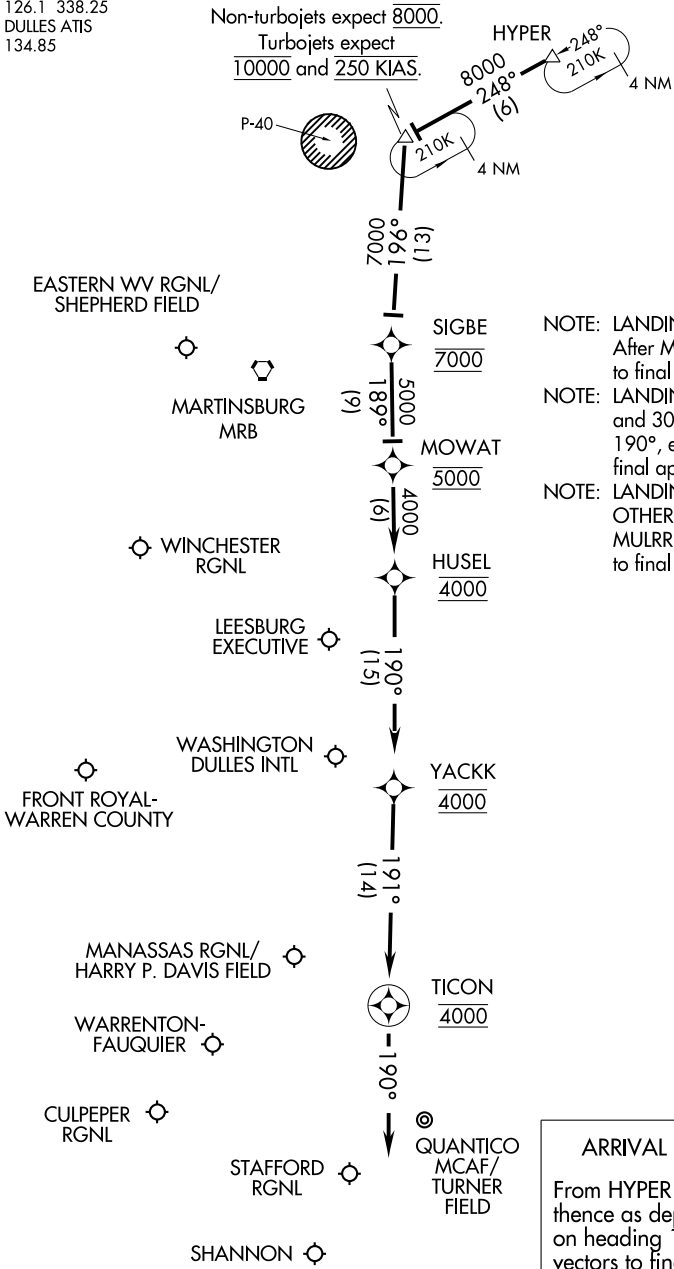
HYPER FOUR ARRIVAL (RNAV) Arrival Routes

WASHINGTON, DC

POTOMAC APP CON
126.1 338.25
DULLES ATIS
134.85

MULRR

Non-turbojets expect 8000.
Turbojets expect
10000 and 250 KIAS.



- NOTE: LANDING KIAD RWYS 19L/C/R: After MULRR, expect radar vectors to final approach course.
- NOTE: LANDING KIAD RWYS 11L/C/R and 30: Depart TICON heading 190°, expect radar vectors to final approach course.
- NOTE: LANDING AT AIRPORTS OTHER THAN KIAD: after MULRR, expect radar vectors to final approach course.

ARRIVAL ROUTE DESCRIPTION
From HYPER on track 248° to MULRR, thence as depicted to TICON, then on heading 190°, expect radar vectors to final approach course.

NOTE: Chart not to scale.

NE-3, 31 MAY 2012 to 28 JUN 2012

NE-3, 31 MAY 2012 to 28 JUN 2012

WASHINGTON, DC