

DEEZZ THREE DEPARTURE (RNAV)

ATIS
126.65
CLNC DEL
128.25
GND CON
121.6 269.6
REPUBLIC TOWER ★
118.8 279.65
NEW YORK DEP CON
125.7 353.75

TAKEOFF OBSTACLE NOTES:

- Rwy 1: Fence, elevator, buildings, tanks, and trees beginning 3' from DER, 194' left of centerline, up to 69' AGL/144' MSL. Stack, chimneys, antennas, hangars, buildings, poles and trees beginning 144' from DER, 246' right of centerline, up to 80' AGL/155' MSL. Tank 5912' from DER, 1427' left of centerline, 139' AGL/235' MSL.
- Rwy 14: Road, pole, and trees beginning 182' from DER, 24' right of centerline, up to 70' AGL/120' MSL. Poles and trees beginning 534' from DER, 97' left of centerline, up to 74' AGL/124' MSL.
- Rwy 19: Sign, hangar, poles, and trees beginning 78' from DER, 14' right of centerline, up to 65' AGL/115' MSL. Buildings, poles, and trees beginning 182' from DER, 71' left of centerline, up to 75' AGL/125' MSL. Tower 2454' from DER, 318' right of centerline, 84' AGL/142' MSL.
- Rwy 32: Fence, poles, and trees beginning 146' from DER, 23' right of centerline, up to 69' AGL/139' MSL. Traffic signal, poles, antenna, and trees beginning 330' from DER, 124' left of centerline, up to 72' AGL/142' MSL. Tank 1.3 NM from DER, 1122' left of centerline, 107' AGL/297' MSL.

NOTE: DME/DME/IRU or GPS required.

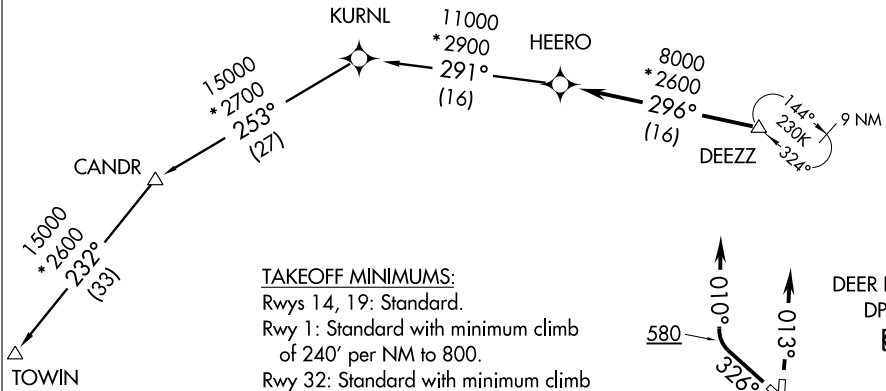
NOTE: Radar Required.

NOTE: RNAV 1.

NOTE: TOWIN transition ATC assigned only.

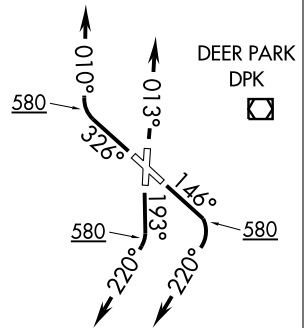
NE-2, 31 MAY 2012 to 28 JUN 2012

NE-2, 31 MAY 2012 to 28 JUN 2012



TAKEOFF MINIMUMS:

- Rwys 14, 19: Standard.
- Rwy 1: Standard with minimum climb of 240' per NM to 800.
- Rwy 32: Standard with minimum climb of 245' per NM to 800.



(NARRATIVE ON FOLLOWING PAGE)

NOTE: Chart not to scale.

DEEZZ THREE DEPARTURE (RNAV)



DEPARTURE ROUTE DESCRIPTION

TAKEOFF RWY 1: Climb heading 013°, thence

TAKEOFF RWY 14: Climb heading 146° to 580, then climbing right turn heading 220°, thence

TAKEOFF RWY 19: Climb heading 193° to 580, then climbing right turn heading 220°, thence

TAKEOFF RWY 32: Climb heading 326° to 580, then climbing right turn heading 010°, thence

. . . . Expect vectors to DEEZZ, then on depicted route to HEERO. Maintain 3000. Expect clearance to filed altitude/flight level within ten (10) minutes after departure.

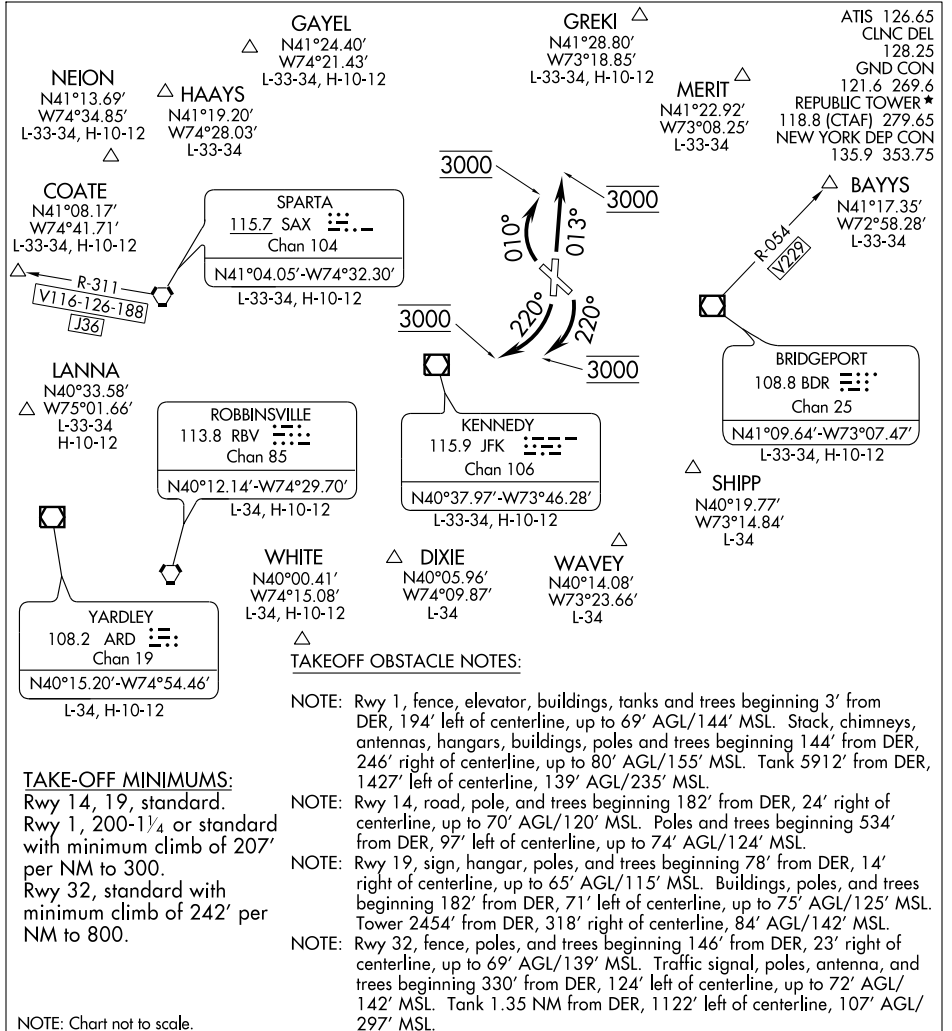
CANDR TRANSITION (DEEZZ3.CANDR)

TOWIN TRANSITION (DEEZZ3.TOWIN)

NE-2, 31 MAY 2012 to 28 JUN 2012

NE-2, 31 MAY 2012 to 28 JUN 2012

FARMINGDALE FOUR DEPARTURE



NE-2, 31 MAY 2012 to 28 JUN 2012

NE-2, 31 MAY 2012 to 28 JUN 2012

TAKE-OFF MINIMUMS:

- Rwy 14, 19, standard.
- Rwy 1, 200-1¼ or standard with minimum climb of 207' per NM to 300.
- Rwy 32, standard with minimum climb of 242' per NM to 800.

NOTE: Chart not to scale.

DEPARTURE ROUTE DESCRIPTION

- TAKE-OFF RUNWAY 1:** Climb heading 013°, maintain 3000 feet, thence . . .
- TAKE-OFF RUNWAY 14 and 19:** Climbing right turn via heading 220°, maintain 3000 feet, thence. . .
- TAKE-OFF RUNWAY 32:** Climbing right turn via heading 010°, maintain 3000 feet, thence . . .

. . . via vectors to assigned route/fix. Expect clearance to filed altitude/flight level 10 minutes after departure.

BAYYS DEPARTURES: Expect vectors to BDR VOR/DME R-054 to BAYYS INT.
 COATE DEPARTURES: Expect vectors to SAX VORTAC/SAX R-311 to COATE INT.

FARMINGDALE FOUR DEPARTURE