

FALLON, NEVADA

AL-786 (FAA)

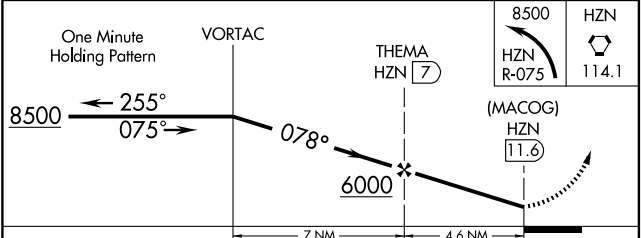
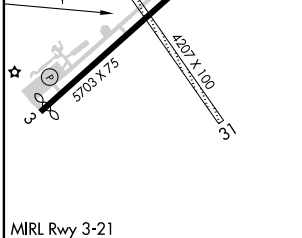
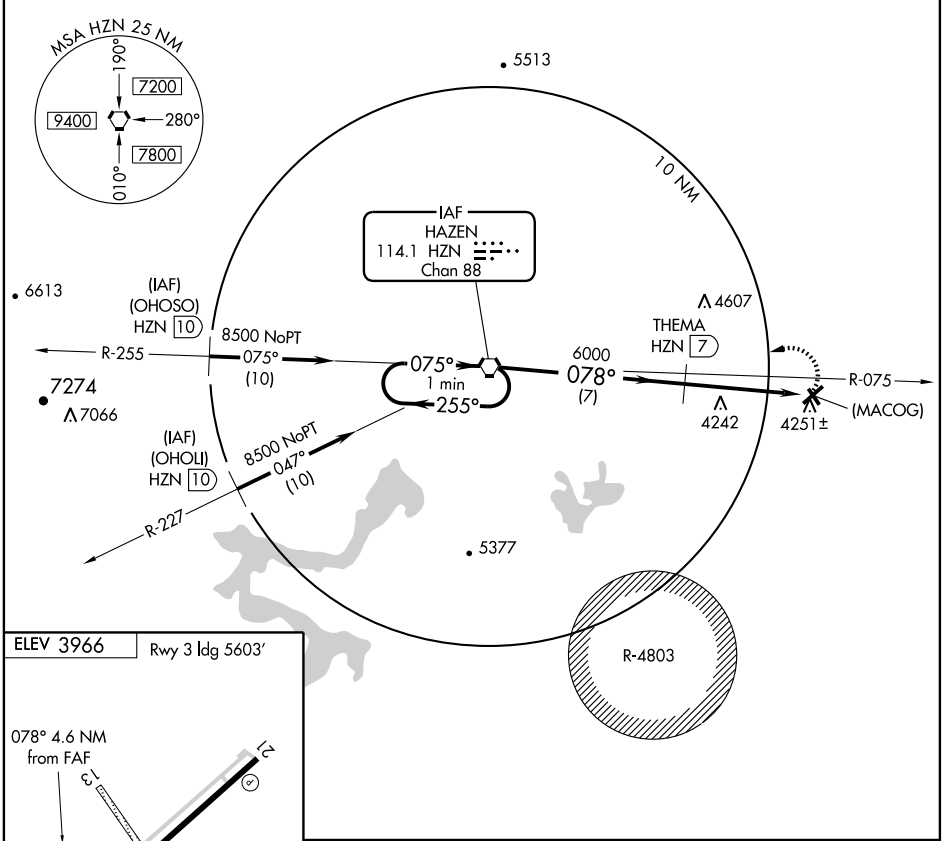
VOR/DME or GPS-B
FALLON MUNI (F'LX)

VORTAC HZN 114.1 Chan 88	APP CRS 078°	Rwy ldg TDZE Apt Elev N/A N/A 3966
--	------------------------	--

▼ Use NAS Fallon altimeter setting; when not available, procedure not authorized.
▲ NA Contact Fallon Approach Control for approach clearance, if unable contact Oakland ARTCC.

MISSED APPROACH: Climbing left turn to 8500 via R-075 to HZN VORTAC and hold, continue climb-in-hold to 8500.

NAVY FALLON APP CON* 120.85 360.2	OAKLAND CENTER 128.8 285.5	UNICOM 122.8 (CTAF)
---	--------------------------------------	-------------------------------



MIRL Rwy 3-21				
CATEGORY	A	B	C	D
CIRCLING	4580-1	614 (700-1)	4580-1 ³ / ₄ 614 (700-1 ³ / ₄)	4580-2 614 (700-2)

FALLON, NEVADA
Amdt 3A 07214

39°30'N-118°45'W

FALLON MUNI (F'LX)
VOR/DME or GPS-B

SW-4, 19 NOV 2009 to 17 DEC 2009

SW-4, 19 NOV 2009 to 17 DEC 2009

TAKE-OFF MINIMUMS AND (OBSTACLE) DEPARTURE PROCEDURES

09323

INSTRUMENT APPROACH PROCEDURE CHARTS

IFR TAKE-OFF MINIMUMS AND (OBSTACLE) DEPARTURE PROCEDURES

Civil Airports and Selected Military Airports

ALL USERS: Airports that have Departure Procedures (DPs) designed specifically to assist pilots in avoiding obstacles during the climb to the minimum enroute altitude, and/or airports that have civil IFR take-off minimums other than standard, are listed below. Take-off Minimums and Departure Procedures apply to all runways unless otherwise specified. Altitudes, unless otherwise indicated, are minimum altitudes in MSL.

DPs specifically designed for obstacle avoidance are referred to as Obstacle Departure Procedures (ODPs) and are described below in text, or published separately as a graphic procedure. If the (Obstacle) DP is published as a graphic procedure, its name will be listed below, and it can be found in either this volume (civil), or a separate Departure Procedure volume (military), as appropriate. Users will recognize graphic obstacle DPs by the term "(OBSTACLE)" included in the procedure title; e.g., TETON TWO (OBSTACLE). If not assigned a SID or radar vector by ATC, an ODP may be flown without ATC clearance to ensure obstacle clearance.

Graphic DPs designed by ATC to standardize traffic flows, ensure aircraft separation and enhance capacity are referred to as "Standard Instrument Departures (SIDs)". SIDs also provide obstacle clearance and are published under the appropriate airport section. ATC clearance must be received prior to flying a SID.

CIVIL USERS NOTE: Title 14 Code of Federal Regulations Part 91 prescribes standard take-off rules and establishes take-off minimums for certain operators as follows: (1) Aircraft having two engines or less - one statute mile. (2) Aircraft having more than two engines - one-half statute mile. These standard minima apply in the absence of any different minima listed below.

MILITARY USERS NOTE: Civil (nonstandard) take-off minima are published below. For military take-off minima, refer to appropriate service directives.

NAME	TAKE-OFF MINIMUMS	NAME	TAKE-OFF MINIMUMS
BATTLE MOUNTAIN, NV		BLANDING, UT	
BATTLE MOUNTAIN (BAM)		BLANDING MUNI	
AMDT 3 09127 (FAA)		TAKE-OFF MINIMUMS: Rwy 35 , 800-1 or std. with a min. climb of 350 feet per NM to 6700.	
TAKE-OFF MINIMUMS: Rwy 3 , std. w/ a min climb of 282' per NM to 7300 or 4700-3 for climb in visual conditions. Rwy 12 , std. w/ a min climb of 386' per NM to 7600 or 4700-3 for climb in visual conditions.		DEPARTURE PROCEDURE: Rwy 17 , turn left. Rwy 35 , turn right climb to 9000 via heading 090° and DVC R-223 to DVC VORTAC, then continue climb on course to MEA.	
DEPARTURE PROCEDURE: Rwy 3 , climb heading 032° to 8200 before proceeding on course or climb in visual conditions to cross Battle Mountain Airport at or above 9100 before proceeding on course. Rwy 12 , climb heading 122° and BAM R-076 to 10000 before proceeding on course or climb in visual conditions to cross Battle Mountain Airport at or above 9100 before proceeding on course. Rwy 21 , climb direct BAM VORTAC and BAM R-205 to 10100 before proceeding on course. Rwy 30 , climb heading 302° and BAM R-324 to 9100 before proceeding on course.		BRIGHAM CITY, UT	
		BRIGHAM CITY (BMC)	
		AMDT 5 09295 (FAA)	
		TAKE-OFF MINIMUMS: Rwy 34 , std. w/ min. climb of 325' per NM to 5300 or 5100-3 for climb in visual conditions.	
		DEPARTURE PROCEDURE: Rwy 16 , climbing right turn heading 205° and OGD R-331 to OGD VORTAC. Rwy 34 , climbing left turn heading 205° and OGD R-331 to OGD VORTAC or for climb in visual conditions: cross Brigham City airport southbound at or above 9200 then via OGD R-351 to OGD VORTAC.	
		NOTE: Rwy 16 , poles 266' from DER, 558' right of centerline, 30' AGL 4258' MSL.	
BEAVER, UT			
BEAVER MUNI			
TAKE-OFF MINIMUMS: Rwys 7, 25 , NA-obstacles. Rwys 13, 31 , 2600-2¾ for climb in visual conditions.			
DEPARTURE PROCEDURE: Rwys 13, 31 , climb in visual conditions to cross Beaver Muni Airport Northwestbound at or above 8300 then climb to 10100 via MLF VORTAC R-102 to MLF VORTAC. Do not exceed 210 KIAS until established on MLF VORTAC R-102.			

09323

TAKE-OFF MINIMUMS AND (OBSTACLE) DEPARTURE PROCEDURES

09323

BULLHEAD CITY, AZ

LAUGHLIN/BULLHEAD INTL (IFP)
AMDT 1 09183 (FAA)

TAKE-OFF MINIMUMS: **Rwy 16**, std. w/a min. climb of 370' per NM to 1800, or 1700-3 for climb in visual conditions. **Rwy 34**, std. w/a min. climb of 495' per NM to 5500, or 1700-3 for climb in visual conditions.

DEPARTURE PROCEDURE: **Rwy 16**, climb via heading 164° and EED VORTAC R-334 to EED VORTAC, or for climb in visual conditions: cross Laughlin/Bullhead Intl airport at or above 2300, then continue climbing via heading 155° and EED VORTAC R-335 to EED VORTAC. **Rwy 34**, climb via heading 344° to 1600, then climbing right turn direct EED VORTAC, or for climb in visual conditions: cross Laughlin/Bullhead Intl airport at or above 2300, then continue climbing via heading 155° and EED VORTAC R-335 to EED VORTAC. **All Aircraft** climb in EED VORTAC holding pattern (East, right turn, 257° inbound) to cross EED VORTAC at or above MEA for direction of flight before proceeding on course.

NOTE: **Rwy 16**, multiple bushes beginning 3600' from DER, left of centerline, up to 12' AGL/1029' MSL. **Rwy 34**, multiple poles beginning 2211' from DER, right of centerline, up to 105' AGL/821' MSL.

CARSON CITY, NV

CARSON (CXP)
ORIG 08325 (FAA)

TAKE-OFF MINIMUMS: **Rwy 27**, NA-obstacles.
DEPARTURE PROCEDURE: **Rwy 9**, use JIMPA
DEPARTURE.

CASA GRANDE, AZ

CASA GRANDE MUNI

DEPARTURE PROCEDURE: **Rwy 5**, right turn. **Rwy 23**, climb direct TFD VORTAC. Continue climb in holding pattern (SW, right turn, 048° inbound) to MEA for direction of flight.

CEDAR CITY, UT

CEDAR CITY RGNL

TAKE-OFF MINIMUMS: **Rwy 8**, 3500-3 or std. with a min. climb of 450' per NM to 10000.
DEPARTURE PROCEDURE: **Rwys 20, 26**, turn right. **Rwys 2, 8**, turn left, climb direct to CDC VOR/DME, continue climb to 9000 via R-348. Northbound continue on course. All others reverse course, climb to cross CDC VOR/DME at or above MCA for direction of flight.

CHANDLER, AZ

CHANDLER MUNI

DEPARTURE PROCEDURE: **Rwy 4R**, climbing left turn heading 220°. **Rwys 22L, 22R**, climbing left turn heading 190°. **All Aircraft**, continue climb via TFD R-350 to TFD VORTAC.
NOTE: **Rwy 4L**, multiple towers and buildings beginning 69' from departure end of runway, 397' left of centerline, up to 80' AGL/1319' MSL.

CHANDLER, AZ (CON'T)

STELLAR AIRPARK

DEPARTURE PROCEDURE: **Rwy 17**, turn left, climb via heading 150°. **Rwy 35**, turn right. **All aircraft** climb via TFD R-350 direct TFD VORTAC.

NOTE: **Rwy 17**, tower and signs beginning 574' from departure end of runway, 183' right of centerline, up to 50' AGL/1124' MSL. Sign 611' from departure end of runway, 365' left of centerline, 42' AGL/1214' MSL.

COLORADO CITY, AZ

COLORADO CITY MUNI

TAKE-OFF MINIMUMS: **Rwy 2, NA**.
DEPARTURE PROCEDURE: **Rwy 11**, turn right. **Rwys 20, 29**, turn left. **All aircraft** climb to 7400 via the 160° bearing from AZC NDB then continue climb on course.

COOLIDGE, AZ

COOLIDGE MUNI

DEPARTURE PROCEDURE: **Rwys 5, 35**, climbing left turn heading 280° to intercept TFD R-063, then via R-063 to TFD VORTAC before proceeding on course. **Rwy 17**, climbing right turn heading 240° to intercept TFD R-090, then via R-090 to TFD VORTAC before proceeding on course. **Rwy 23**, climb runway heading to intercept TFD R-090, then via R-090 to TFD VORTAC before proceeding on course.

DAVIS-MONTHAN AFB (KDMA)

TUCSON, AZ.07186

Diverse departures not authorized, use published departure procedure for obstacle avoidance.
TAKE-OFF OBSTACLES: **Rwy 12**: Terrain 0' AGL/2707' MSL, 81' from DER, 500' left of centerline. Terrain 0' AGL/2707' MSL, 46' from DER, 512' left of centerline. Terrain 0' AGL/2707' MSL, 16' from DER, 500' left of centerline. Terrain 0' AGL/2706' MSL, 0' from DER, 200' left of centerline. **Rwy 30**: Terrain 0' AGL/2592' MSL, 0' from DER, 106' left of centerline. Terrain 0' AGL/2592' MSL, 7' from DER, 97' left of centerline. Terrain 0' AGL/2592' MSL, 0' from DER, 484' right of centerline. Terrain 0' AGL/2592' MSL, 13' from DER, 493' right of centerline. Vehicle 11' AGL/2615' MSL, 1017' from DER, 477' left of centerline. Terrain 0' AGL/2612' MSL, 237' from DER, 590' left of centerline.

DELTA, UT

DELTA MUNI

TAKE-OFF MINIMUMS: **Rwy 17**, std. with a min. climb of 412' per NM to 6600, or 1800-3 for climb in visual conditions. Climb in visual conditions NA at night. **Rwy 12**, NA-terrain. **Rwy 30**, NA-airspace.
DEPARTURE PROCEDURE: **Rwy 17**, climb via DTA VORTAC R-347 to DTA VORTAC, or climb in visual conditions to cross departure end of runway southbound at or above 6400, then via DTA VORTAC R-347 to DTA VORTAC, thence... **Rwy 35**, climb via heading 346° to 5800, then climbing left turn via heading 180° and DTA VORTAC R-310 to DTA VORTAC, thence...
...climb in holding pattern (hold south, left turn, 004° inbound) to cross DTA VORTAC at or above airway MEA for route of flight.
NOTE: **Rwy 17**, trees 1598' from departure end of runway, 62' right of centerline, 60' AGL/4799' MSL.

19 NOV 2009 to 17 DEC 2009

19 NOV 2009 to 17 DEC 2009

09323

TAKE-OFF MINIMUMS AND (OBSTACLE) DEPARTURE PROCEDURES

09323

DOUGLAS BISBEE, AZ

BISBEE- DOUGLAS INTL

DEPARTURE PROCEDURE: Climb to 5700 in holding pattern, right turn to 140 inbound DUG VORTAC, then assigned route. CAT C,D turbojets climb not to exceed 250 kts. to 8000.

DUCHESNE, UT

DUCHESNE MUNI

DEPARTURE PROCEDURE: Climb direct to MTU VORTAC to depart at or above 7200 eastbound or 10000 westbound.

ELKO, NV

ELKO RGNL

TAKE-OFF MINIMUMS: **Rwy 5**, 2500-3 or std. with a min. climb of 330' per NM to 8000. **Rwy 23**, 2500-3 or std. with a min. climb of 340' per NM to 8000.

DEPARTURE PROCEDURE: **Rwy 5**, climb runway heading to 6000, then climbing right turn direct BQU VOR/DME, then...

Rwy 23, (V32 Southwest) climb to 6000, then climbing left turn heading 200° to intercept BQU R-241 (V32).

Rwy 23, all others climb runway heading to 6000, then climbing left turn direct BQU VOR/DME, then...

climb in BQU VOR/DME holding pattern (S, left turns, 340° inbound) to cross BQU VOR/DME at the MEA/MCA/MOCA for direction of flight.

ELY, NV

ELY AIRPORT-YELLAND FIELD

TAKE-OFF MINIMUMS: **Rwys 30,36**, 3000-2 or std. with a min. climb of 700' per NM to 10000.

DEPARTURE PROCEDURE: **Rwys 12,30,36**, right turn; **Rwy 18**, straight ahead; intercept. ELY VOR/DME R-150 to 10000. Aircraft departing on V293 southeast climb on course to MEA. Departures V269 or V293 northbound, reverse course to the left, continue climb to cross ELY VOR/DME at or above 12000.

FALLON, NV

FALLON MUNI

TAKE-OFF MINIMUMS: **Rwy 13**, 300-1 or std. with a min. climb of 350' per NM to 4300.

DEPARTURE PROCEDURE: **Rwy 21**, turn right. **Rwys 3,13,31**, turn left. All departures climb via HZN R-075 to HZN VORTAC. Climb in holding pattern (W, right turns, 075° inbound) to depart HZN VORTAC at or above: R-240 CW R-149, 8000; R-150 CW R-239, 9000. Continue climb on course to MEA or assigned altitude.

FALLON NAS (KNFL)

FALLON, NV

Diverse departures not authorized.

FLAGSTAFF, AZ

FLAGSTAFF PULLIAM

DEPARTURE PROCEDURE: **Rwy 3**, turn right. **Rwy 21**, turn left. Aircraft departing FLG R-160 CW R-175 climb on course. All others climb southbound on FLG R-172 to 9000, then climbing left turn direct FLG VOR/DME.

FORT HUACHUCA-SIERRA VISTA, AZ

SIERRA VISTA MUNI-LIBBY AAF

TAKE-OFF MINIMUMS: **Rwy 21**, NA.
DEPARTURE PROCEDURE: **Rwys 3,8,12**, turn left. **Rwys 26,30**, turn right. All aircraft climb to 9500 to TOMBS Int via FHU VOR R-019 or 018° bearing from DAO NDB.

GLENDALE, AZ

GLENDALE MUNI

TAKE-OFF MINIMUMS: **Rwy 19**, NA-ATC.
DEPARTURE PROCEDURE: **Rwy 1**, Use DRAKE (RNAV) DEPARTURE.

GLOBE, AZ

SAN CARLOS APACHE (P13)

ADMT 2 08101 (FAA)

DEPARTURE PROCEDURE: Use IZTIR DEPARTURE.

GOODYEAR, AZ

PHOENIX GOODYEAR

TAKE-OFF MINIMUMS: **Rwy 3**, NA-ATC.
DEPARTURE PROCEDURE: **Rwy 21**, Use POTER DEPARTURE.

GRAND CANYON, AZ

GRAND CANYON NATIONAL PARK

TAKE-OFF MINIMUMS: **Rwy 3**, NA-environmental.
DEPARTURE PROCEDURE: **Rwy 21**, use GRAND DEPARTURE.

HEBER CITY, UT

HEBER CITY MUNI-RUSS MCDONALD FIELD

DEPARTURE PROCEDURE: **Rwy 3**, Use COOLI RNAV DEPARTURE.

HILL AFB (KHIF)

OGDEN, UT

Diverse departures not authorized, use radar vectors or published Departure Procedures (DP) for obstacle avoidance.

HUNTINGTON, UT

HUNTINGTON MUNI (69V)

AMDT 2A 09295 (FAA)

TAKE-OFF MINIMUMS: **Rwys 18, 26, 36**, NA. **Rwy 30**, 1700-3 or std. with a min. climb of 300' per NM to 8100.
DEPARTURE PROCEDURE: **Rwys 8, 12**, climbing left turn direct PUC VOR/DME...

Rwy 30, climbing right turn direct PUC VOR/DME....
...continue climb in PUC VOR/DME holding pattern (hold S, right turns, 009° inbound) to MEA for direction of flight.

NOTE: **Rwy 8**, tree 2663' from DER, 922' left of centerline, 40' AGL/5979' MSL. **Rwy 12**, tree 333' from DER, 132' right of centerline, 40' AGL/5919' MSL. **Rwy 30**, tree 2065' from DER, 875' left of centerline, 40' AGL/5999' MSL.

19 NOV 2009 to 17 DEC 2009

19 NOV 2009 to 17 DEC 2009

09323

TAKE-OFF MINIMUMS AND (OBSTACLE) DEPARTURE PROCEDURES

TAKE-OFF MINIMUMS AND (OBSTACLE) DEPARTURE PROCEDURES

09323

KANAB, UT

KANAB MUNI

TAKE-OFF MINIMUMS: **Rwy 1**, std. with a min. climb of 316' per NM to 7200.

NOTE: Use KACIR ONE RNAV DEPARTURE.

KINGMAN, AZ

KINGMAN

TAKE-OFF MINIMUMS: **Rwys 3, 17, 21, 35**, 800-1 or std. with a min. climb of 210' per NM to 7000.

DEPARTURE PROCEDURE: Climb northbound on IGM R-010 until reaching 6000; reverse course to the left and continue climb to 9000 direct to IGM. If unable to cross IGM at 9000 continue climb in IGM holding pattern (SW, left turns, 027° inbound).

LAGUNA AAF (LGF)

YUMA PROVING GROUND, AZ (03247)

Rwy 6, 18, 36 turn right, climb to 3600 direct BZA VORTAC.

Rwy 24 climb to 3600 direct to BZA VORTAC.

TAKE-OFF OBSTACLES:

Rwy 18: 386' (6' AGL) windsock, 818' from departure end of rwy, 194' left of centerline.

LAKE HAVASU CITY, AZ

LAKE HAVASU CITY

TAKE-OFF MINIMUMS: **Rwy 14**, 300-1½ or std. w/min. climb of 278' per NM to 1200. **Rwy 32**, 600-1½ or std. w/min. climb of 492' per NM to 1100.

DEPARTURE PROCEDURE: **Rwy 14**, climbing right turn heading 300° to intercept EED VORTAC R-155 to EED VORTAC, climb in EED VORTAC holding pattern (east, right turn, 257° inbound) to cross EED VORTAC at or above airway MEA for route of flight. **Rwy 32**, climbing left turn heading 290° to intercept EED VORTAC R-155 to EED VORTAC, climb in EED VORTAC holding pattern (east, right turn, 257° inbound) to cross EED VORTAC at or above airway MEA for route of flight.

NOTE: **Rwy 14**, obstruction light on transmission tower, 1.2 NM from departure end of runway, 1885' left of centerline, 151' AGL/1027' MSL. Transmission tower 1.4 NM from departure end of runway, 1953' left of centerline, 145' AGL/1058' MSL. Bush 1080' from departure end of runway, 500' left of centerline, 31' AGL/825' MSL. Terrain 145' from departure end of runway, 347' left of centerline, 14' AGL/797' MSL. Bush 1256' from departure end of runway, 255' left of centerline, 35' AGL/818' MSL. **Rwy 32**, obstruction light on transmission tower 4052' from departure end of runway, 932' right of centerline, 180' AGL/974' MSL. Transmission tower 2504' from departure end of runway, 1009' right of centerline, 112' AGL/903' MSL.

LAS VEGAS, NV

HENDERSON EXECUTIVE

TAKE-OFF MINIMUMS: **Rwy 17L/R**, Cat A/B std. with a min. climb of 491' per NM to 6000, or 2100-3 for climb in visual conditions, Cat C/D NA. **Rwy 35L/R**, Cat A/B std. with a min. climb of 312' per NM to 4700, or 2100-3 for climb in visual conditions, Cat C/D NA.

DEPARTURE PROCEDURE: **Rwy 17L/R**, climbing right turn via LAS R-157 to LAS VORTAC before proceeding on course, or for climb in visual conditions: Cross Henderson Executive Airport eastbound at or above 4500, then via BLD R-249 to BLD VORTAC. **Rwy 35L/R**, climbing right turn via BLD R-257 to BLD VORTAC before proceeding on course, or for climb in visual conditions: Cross Henderson Executive Airport eastbound at or above 4500, then via BLD R-249 to BLD VORTAC.

NOTE: **Rwy 17L**, tree 5610' from departure end of runway, 82' left of centerline, 100' AGL/2739' MSL. Tree 1.9 miles from departure end of runway, 1495' left of centerline, 100' AGL/2859' MSL. **Rwy 17R**, tree 4041' from departure end of runway, 859' left of centerline, 100' AGL/2739' MSL.

MCCARRAN INTL (KLAS)

TAKE-OFF MINIMUMS: **Rwy 25R**, 200-1 or std. with a min. climb of 220' per NM to 2400.

DEPARTURE PROCEDURE: **Rwys 1L, 1R**, climbing right turn direct BLD VORTAC. **Rwys 7L, 7R**, climb via heading 075° to 3400 then climbing right turn direct BLD VORTAC. **Rwys 19L, 19R**, climbing left turn via heading 120° and BLD VORTAC R-257 to BLD VORTAC. **Rwys 25L, 25R**, climb via heading 255° to 2700 then climbing right turn direct BLD VORTAC.

NOTE: **Rwy 1L**, multiple poles, tree, and building 450' from departure end of runway, 283' left of centerline, up to 174' AGL/2132' MSL. Obstruction light on WSK 248' from departure end of runway, 224' right of centerline, 15' AGL/2104' MSL. **Rwy 1R**, multiple sign and building 1331' from departure end of runway, 448' right of centerline, up to 100' AGL/2120' MSL. **Rwy 7L**, multiple poles and trees 747' from departure end of runway, 442' right of centerline, up to 62' AGL/2062' MSL. Tree 1257' from departure end of runway, 789' left of centerline, 65' AGL/2077' MSL. **Rwy 7R**, lighted WSK 126' from departure end of runway, 290' right of centerline, 25' AGL/2051' MSL. **Rwy 19L**, multiple poles, sign and building 1394' from departure end of runway, 320' right of centerline, up to 51' AGL/2256' MSL. **Rwy 19R**, multiple poles, sign, and building 197' from departure end of runway, 125' right of centerline, up to 51' AGL/2256' MSL. Multiple pole and building 1396' from departure end of runway, 356' left of centerline, up to 47' AGL/2262' MSL. **Rwy 25L**, multiple poles, sign, and building 1003' from departure end of runway, 251' left of centerline, up to 63' AGL/2256' MSL. **Rwy 25R**, multiple poles and road 675' from departure end of runway, 17' right of centerline, up to 100' AGL/2301' MSL. Multiple poles and buildings 533' from departure end of runway, 1' left of centerline, up to 150' AGL/2469' MSL.

NORTH LAS VEGAS (VGT)

AMDT 3 08045 (FAA)

DEPARTURE PROCEDURE: Use BOULDER CITY DEPARTURE.

19 NOV 2009 to 17 DEC 2009

19 NOV 2009 to 17 DEC 2009

09323

TAKE-OFF MINIMUMS AND (OBSTACLE) DEPARTURE PROCEDURES

TAKE-OFF MINIMUMS AND (OBSTACLE) DEPARTURE PROCEDURES

09323

LOGAN, UT

LOGAN-CACHE

TAKE-OFF MINIMUMS: **Rwys 10,28,NA**-obstacles.
Rwy 17, 2000-3 or std. with min. climb of 270' per NM to 10000. **Rwy 35**, 1500-3 or std. with a min. climb of 270' per NM to 10000.
 DEPARTURE PROCEDURE: **Rwy 17**, climbing right turn via LHO VOR/DME R-097 to LHO VOR/
 DME...**Rwy 35**, climbing left turn via LHO VOR/DME R-055 to LHO VOR/DME... then via LHO VOR/DME R-263 to PIMIE INT, cross PIMIE INT at or above 10000.
 NOTE: **Rwy 17**, lighted WSK 194' from departure end of runway, 137' right of centerline, 26' AGL/4465' MSL.
 Tree 1459' from departure end of runway, 229' left of centerline, 50' AGL/4495' MSL.

LOVELOCK, NV

DERBY FIELD (LOL) ORIG-A 08297 (FAA)

TAKE-OFF MINIMUMS: **Rwy 1**, 2300-2 or std. with a min. climb of 300' per NM to 6200. **Rwy 7**, 1100-1 or std. with a min. climb of 250' per NM to 5000. **Rwys 19, 25**, 2300-2 or std. with a min. climb of 260' per NM to 6200.
 DEPARTURE PROCEDURE: **Rwy 1**, turn right.
Rwys 7, 19, 25, turn left, climb direct LLC VORTAC. Aircraft departing 330° CW 359° climb via LLC R-333 to ROBUD INT; 360° CW 089° climb in LLC VORTAC holding pattern (hold NW, left turns, 153° inbound) to depart LLC VORTAC at or above 8600; 090° CW 219° climb on course; 220° CW 329° climb in LLC VORTAC holding pattern to depart LLC VORTAC at or above 8600. Continue climb on course to MEA or assigned altitude.

LUKE AFB (KLUF)

GLENDALE, AZ AMDT 3, 09183

Diverse departures not authorized.
 Use published DP, if unable to comply with DP notify clearance delivery and request RADAR Vectors.
TAKE-OFF OBSTACLES:
Rwy 3L: Taxiing aircraft, 19' AGL/1126' MSL, 1221' from DER, 782' left of centerline. Taxiing aircraft, 19' AGL/1126' MSL, 1407' from DER, 609' left of centerline. Weather equipment, 15' AGL/1117' MSL, 759' from DER, 505' right of centerline. Weather equipment, 15' AGL/1117' MSL, 1209' from DER, 505' right of centerline. Building, 20' AGL/1127' MSL, 1620' from DER, 925' left of centerline.
Rwy 21L: Taxiing aircraft, 38' AGL/1120' MSL, 1428' from DER, 774' left of centerline.

MESA, AZ

FALCON FIELD

TAKE-OFF MINIMUMS: **Rwys 4L, 4R**, std. with a min. climb of 459' per NM to 3600, or 1100-3 for climb in visual conditions.
 DEPARTURE PROCEDURE: **Rwy 4L, 4R**, climbing left turn to 5000 via 220° bearing from FFZ NDB to intercept the PXR VORTAC R-143 southeast bound. For climb in visual conditions cross FFZ NDB at or above 2300 then proceed via 220° bearing to PXR R-143 southeast bound. **Rwy 22L, 22R**, climb to 5000 via 220° bearing from FFZ NDB to intercept the PXR VORTAC R-143 southeast bound.
 NOTE: **Rwy 4L**, light standard 416' from departure end of runway, 415' left of centerline, 48' AGL/1428' MSL. Obstacle light on building 1313' from departure end of runway, 424' left of centerline, 54' AGL/1434' MSL. **Rwy 4R**, light standard 514' from departure end of runway, 565' right of centerline, 48' AGL/1441' MSL. Tree 1097' from departure end of runway, 650' right of centerline, 50' AGL/1448' MSL. Tree 1060' from departure end of runway, 359' right of centerline, 50' AGL/1451' MSL. **Rwy 22L**, light pole 254' from departure end of runway, 538' right of centerline, 13' AGL/1382' MSL. Windmill 691' from departure end of runway, 528' right of centerline, 30' AGL/1389' MSL. Windmill 715' from departure end of runway, 603' right of centerline, 30' AGL/1389' MSL. Light pole 68' from departure end of runway, 764' right of centerline, 13' AGL/1382' MSL. Tree 175' from departure end of runway, 826' right of centerline, 13' AGL/1383' MSL. **Rwy 22R**, light pole 296' from departure end of runway, 541' right of centerline 13' AGL/1400' MSL. Light pole 495' from departure end of runway, 187' right of centerline, 13' AGL/1382' MSL. Light pole 594' from departure end of runway, 65' right of centerline, 13' AGL/1382' MSL.

MESQUITE, NV

MESQUITE

TAKE-OFF MINIMUMS: **Rwy 1**, 900-3, or std. with a min. climb of 620' per NM to 2400.
 DEPARTURE PROCEDURE: **Rwy 1**, climbing left turn, **Rwy 19**, climbing right turn. All aircraft climb direct MMM VORTAC. Aircraft departing MMM R-149 CW R-220 climb on course. All others continue climb via MMM R-196 to 6100 and reverse course to cross MMM VORTAC at or above: R-221 CW R-270 and R-331 CW R-060, 6100; R-271 CW R-330, 7300; R-061 CW R-150, 8300.

MICHAEL AAF (KDPG),

DUGWAY PROVING GROUND, UT

.....Amdt 1, 09099
Rwy 12, 4700-3*
 *Or standard with minimum climb of 305 ft/NM to 6100.
 DEPARTURE PROCEDURES: **Rwy 12** Climb via heading 122° to 6100, then right turn direct DPG NDB. Continue climb in DPG NDB holding pattern (Hold W, LT, 080° inbound) to 9600 before proceeding on course, or for climb in visual conditions: Cross Michael AAF, Dugway Proving Ground at or above 8900 before proceeding on course. **Rwy 30** Climb via heading 302° to 6100 then left turn direct DPG NDB, continue climb in DPG NDB holding pattern (Hold W, LT, 080° inbound) to 9600 before proceeding on course.

19 NOV 2009 to 17 DEC 2009

19 NOV 2009 to 17 DEC 2009

09323

TAKE-OFF MINIMUMS AND (OBSTACLE) DEPARTURE PROCEDURES

TAKE-OFF MINIMUMS AND (OBSTACLE) DEPARTURE PROCEDURES

09323

MILFORD, UT

MILFORD MUNI/BEN AND JUDY BRISCOE
FIELD

TAKE-OFF MINIMUMS: **Rwy 34**, CAT A,B 1200-2 or std. with a min. climb of 360' per NM to 6500. CAT C,D NA.
DEPARTURE PROCEDURE: **Rwy 16**, climb direct MLF VORTAC. **Rwy 34**, climbing left turn direct MLF VORTAC. Aircraft departing MLF R-170 CWR-210 climb on course. All other aircraft continue climb southbound via MLF R-190 to 7600, then climbing right turn to cross MLF VORTAC at or above 9000, then climb on course.

MINDEN, NV

MINDEN-TAHOE

TAKE-OFF MINIMUMS: **Rwys 12,16,30,NA. Rwy 34**, 4000-3 or std. with a min. climb of 531' per NM to 8700.
DEPARTURE PROCEDURE: **Rwy 34**, use MINDEN RNAV DEPARTURE.

MOAB, UT

CANYONLANDS FIELD

TAKE-OFF MINIMUMS: **Rwy 3**, std. with a min. climb of 320' per NM to 5800. **Rwy 21**, std. with a min. climb of 330' per NM to 5400.

DEPARTURE PROCEDURE: **Rwy 3**, turn left. **Rwy 21**, turn right climb to 6700 via OAB R-293, then climbing right turn direct OAB VOR/DME. Climb in OAB holding pattern (NW, left turns, 113° inbound) to 10000 then proceed on course.

NOTE: **Rwy 3**, tree 4383' from departure end of runway, 1507' right of centerline, 50' AGL/4729' MSL. Road 1749' from departure end of runway, 905' left of centerline, 15' AGL/4635' MSL. Tree 3914' from departure end of runway, 1166' right of centerline, 50' AGL/4690' MSL. Tree 1.25 NM from departure end of runway, 400' right of centerline, 50' AGL/4758' MSL. **Rwy 21**, pole 2026' from departure end of runway, 78' right of centerline, 80' AGL/4625' MSL. Pole 2061' from departure end of runway, 40' right of centerline, 80' AGL/4625' MSL. Pole 2095' from departure end of runway, 857' right of centerline, 80' AGL/4623' MSL. Pole 1980' from departure end of runway, 344' right of centerline, 80' AGL/4602' MSL.

NELLIS AFB (KLSV)

LAS VEGAS, NV

08241

Rwy 3L/R, 10,200-3° SR-SS

Rwy 21L/R, 10,200-3° SR-SS

Diverse departure not authorized.

MILITARY: Use published DP, if unable to comply with DP climb gradient file appropriate DP for intended destination and notify clearance delivery and request RADAR Vectors (Climb Gradient of 300' per NM until 12,000 for RADAR Vectors). If unable to comply with RADAR Vector climb gradient, A/C must depart VFR.

* CIVIL: Use published DP, if unable to comply with DP climb gradient file appropriate DP for intended destination and notify clearance delivery and request RADAR Vectors (Climb Gradient of 330' per NM until 12,000 for RADAR Vectors). If unable to comply with RADAR Vectors climb gradient, A/C may use published weather minimums or depart VFR.

TAKE-OFF OBSTACLES: **RWY 3L**: Terrain 0' AGL/1870' MSL, 0' inward of DER, 500' left of centerline. Road 15' AGL/1934' MSL, 1321' from DER, 802' left of centerline. **RWY 3R**: C-5 on taxiway 65' AGL/1936' MSL, 1345' from DER, 822' right of centerline. Road 15' AGL/2014' MSL, 3929' from DER, 1404' right of centerline. **RWY 21L**: Trees 90' AGL/1949' MSL, 4594' from DER, 1596' right of centerline. Trees 90' AGL/1949' MSL, 4940' from DER, 541' right of centerline. Trees 60' AGL/1899' MSL 929' from DER, 724' left of centerline. Trees 60' AGL/1899' MSL, 946' from DER, 626' left of centerline. Trees 60' AGL/1899' MSL, 2720' from DER, 341' left of centerline. Trees 60' AGL/1899' MSL, 2514' from DER, 403' left of centerline. **RWY 21R**: Terrain 0' AGL/1835' MSL, 0' inward of DER, 500' right of centerline. Trees 90' AGL/1949' MSL, 4594' from DER, 597' right of centerline. Building 45' AGL/1904' MSL, 2274' from DER, 1037' right of centerline. Road 15' AGL/1874' MSL, 1404' from DER, 465' right of centerline.

NOGALES, AZ

NOGALES INTL

TAKE-OFF MINIMUMS: **Rwy 3**, 5000-3 or std. with a min. climb of 350' per NM to 8000. **Rwy 21**, 5000-3 or std. with a min. climb of 300' per NM to 8500.

DEPARTURE PROCEDURE: **Rwy 3**, turn left. **Rwy 21**, turn right. All aircraft climb via OLS R-276 and TUS R-176 to cross ARVEY Int at or above 10000. Continue on course to MEA or assigned altitude.

OGDEN, UT

OGDEN-HINCKLEY (OGD)

AMDT 2 08101 (FAA)

TAKE-OFF MINIMUMS: **Rwys 7,16**, NA- Obstacles.

DEPARTURE PROCEDURE: **Rwys 3, 21, 25, 34**, Use EMONT DEPARTURE.

19 NOV 2009 to 17 DEC 2009

19 NOV 2009 to 17 DEC 2009

09323

TAKE-OFF MINIMUMS AND (OBSTACLE) DEPARTURE PROCEDURES

TAKE-OFF MINIMUMS AND (OBSTACLE) DEPARTURE PROCEDURES

09323

PAGE, AZ

PAGE MUNI (PGA)
AMDT 2 08045 (FAA)

TAKE-OFF MINIMUMS: **Rwys 7, 25**, NA – obstacles
Rwy 15, 300-1 or std. w/ min. climb of 252' per NM to 6500, or 1900-3 for climb in visual conditions.
DEPARTURE PROCEDURE: **Rwy 15**, climb via 157° heading to 6000, then climbing right turn to PGA VOR/DME. Cross PGA VOR/DME at or above 7700. Continue climb in PGA VOR/DME holding pattern (hold NW, right turns, 147° inbound) to airway MEA, or climb in visual conditions: cross Page airport at or above 6100, before proceeding on course. **Rwy 33**, climb via 337° heading to 6000, then climbing left turn to PGA VOR/DME. Cross PGA VOR/DME at or above 7700. Continue climb in PGA VOR/DME holding pattern (hold NW, right turns, 147° inbound) to airway MEA.

NOTE: **Rwy 15**, terrain 192' from departure end of runway, 274' right of centerline, 4323' MSL, tree 1.07 NM from departure end of runway, 167' left of centerline, 4519 MSL, transmission lines 1.96 NM from departure end of runway, 825' left of centerline, 100' AGL/4519' MSL, power line 4.00 NM from departure end of runway, 3606' right of centerline, 75' AGL/4819' MSL, power line 4.35 NM from departure end of runway, 3968' right of centerline, 75' AGL/4919' MSL, power line 5.36 NM from departure end of runway, 5039' right of centerline, 75' AGL/5119' MSL, power line 4.51 NM from departure end of runway, 4136' right of centerline, 75' AGL/5019' MSL, tree 4.52 NM from departure end of runway, 1508' right of centerline, 100' AGL/5173' MSL, AAO 4.58 NM from departure end of runway, 1617' right of centerline, 200' AGL/5187' MSL, AAO 5.15 NM from departure end of runway, 4456' left of centerline, 200' AGL/5190' MSL, tree 5.56 NM from departure end of runway, 4097' right of centerline, 30' AGL/5249' MSL, AAO 5.98 NM from departure end of runway, 653' left of centerline, 200' AGL/5440' MSL.

PARKER, AZ

AVI SUQUILLA

TAKE-OFF MINIMUMS: **Rwy 1**, 800-1½. **Rwy 19**, 300-1.
DEPARTURE PROCEDURE: **Rwy 19**, right turn. **Rwy 1**, left turn. Climb via R-067 to PKE VORTAC, to cross above 4500. Continue climb on course to MEA or assigned altitude.

PAYSON, AZ

PAYSON

TAKE-OFF MINIMUMS: **Rwy 6**, std. with a min. climb of 360' per NM to 9300, or 2500-3 for climb in visual conditions. **Rwy 24**, std. with a min. climb of 375' per NM to 9300, or 2500-3 for climb in visual conditions.
DEPARTURE PROCEDURE: **Rwys 6, 24**, for climb in visual conditions: Cross Payson Airport at or above 7500, then proceed on course.

NOTE: **Rwy 24**, bush 15' from departure end of runway, 133' right of centerline, 6' AGL/5148' MSL. Tree 320' from departure end of runway, 183' right of centerline, 12' AGL/5154' MSL. Fence 85' from departure end of runway, 84' left of centerline, 4' AGL/5141' MSL. Tree 164' from departure end of runway, 126' left of centerline, 9' AGL/5147' MSL.

PHOENIX, AZ

PHOENIX-DEER VALLEY
DEPARTURE PROCEDURE: Use DEER VALLEY DEPARTURE.

PHOENIX SKY HARBOR INTL (PHX)
AMDT 4A 09071 (FAA)

TAKE-OFF MINIMUMS: **Rwy 26**, 700-3 or std. with a min. climb of 358' per NM to 2000.

DEPARTURE PROCEDURE: **Rwys 7L, 7R, 8**, climb via 078° heading to 3000, then climbing right turn direct PHOENIX (PXR) VORTAC. **Rwys 25L, 25R**, climb via 258° heading to 1550 then climbing right turn to join the PXR R-260 (V16) westbound, climb to 5000. **Rwy 26**, climb via 258° heading to 1550 then climbing left turn to join the PXR R-260 (V16) westbound, climb to 5000. Westbound departures continue climb on PXR R-260. All others, climbing right turn direct PXR VORTAC.

NOTE: **Rwy 17**, building 1332' from DER, 798' left of centerline, 67' AGL/1176' MSL. **Rwy 7R**, rod 716' from DER, 184' right of centerline, 87' AGL/1196' MSL. **Rwy 8**, light standard 3530' from DER, 1207' left of centerline, 123' AGL/1232' MSL. Light standard 3479' from DER, 1003' left of centerline, 118' AGL/1227' MSL. **Rwy 25L**, light standard 1129' from DER, 774' left of centerline, 91' AGL/1200' MSL. ASDE-X equipment 411' from DER, 531' left of centerline, 29' AGL/1135' MSL. **Rwy 26**, light 59' from DER, 63' right of centerline, 16' AGL/1125' MSL. Pole 58' from DER, 90' right of centerline, 25' AGL/1125' MSL. Light 78' from DER of runway, 64' right of centerline, 18' AGL/1127' MSL. Light 38' from DER, 440' left of centerline, 24' AGL/1135' MSL. Light standard 77' from DER, 453' left of centerline, 27' AGL/1136' MSL. Light standard 74' from DER, 456' right of centerline, 33' AGL/1142' MSL. Light standard 77' from DER, 434' right of centerline, 31' AGL/1140' MSL. Tree 113' from DER, 294' right of centerline, 24' AGL/1133' MSL. Building 2.32 NM from DER, 3309' right of centerline, 406' AGL/1496' MSL. Building 2.28 NM from DER, 3612' right of centerline, 663' AGL/1750' MSL. Tree 234' from DER, 214' right of centerline, 24' AGL/1133' MSL. Light standard 64' from DER, 68' left of centerline, 39' AGL/1125' MSL. ASDE-X equipment 897' from DER, 413' right of centerline, 35' AGL/1141' MSL.

PHOENIX-MESA GATEWAY

TAKE-OFF MINIMUMS: **Rwys 30L, 30C, 30R**, CAT C, D, E 2000-2 or std. with a min. climb of 230' per NM to 3900.

DEPARTURE PROCEDURE: **Rwys 12L, 12C, 12R**, climb to 2500 via IWA R-122 then climbing right turn direct PXR VORTAC. **Rwys 30L, 30C, 30R**, climbing right turn to 4000 via IWA R-122 then climbing right turn direct PXR VORTAC.

19 NOV 2009 to 17 DEC 2009

19 NOV 2009 to 17 DEC 2009

09323

TAKE-OFF MINIMUMS AND (OBSTACLE) DEPARTURE PROCEDURES

TAKE-OFF MINIMUMS AND (OBSTACLE) DEPARTURE PROCEDURES

09323

PRESCOTT, AZ

ERNEST A. LOVE FIELD

TAKE-OFF MINIMUMS: **Rwy 12**, 2700-2 or std. with a min. climb of 460' per NM to 8100. **Rwy 21L**, 2700-2 or std. with a min. climb of 500' per NM to 8100. **Rwy 30**, 300-1 or std. with a min. climb of 300' per NM to 5200. **Rwy 3L, 21R**, NA.

DEPARTURE PROCEDURE: **Rwy 3R**, turn left heading 250° to intercept DRK R-305. **Rwy 12**, turn right direct DRK VORTAC. **Rwy 21L**, turn right heading 335° to intercept DRK R-305. **Rwy 30**, climb direct DRK VORTAC. **All aircraft** continue climb via DRK R-305 to 9000. Aircraft departing via DRK R-305 continue climb on course. All other aircraft turn right direct DRK VORTAC then climb on course.

PRICE, UT

CARBON COUNTY RGNL/BUCK DAVIS FLD (PUC)

AMDT 4 09071 (FAA)

TAKE-OFF MINIMUMS: **Rwy 7**, NA - per flight check **Rwy 32**, std. w/ min. climb of 425' per NM to 7000, or 3400-3 for climb in visual conditions. **Rwy 36**, std. w/ min. climb of 400' per NM to 7200, or 3400-3 for climb in visual conditions.

DEPARTURE PROCEDURE: **Rwy 14**, climb on a heading between 126° CW to 193°; thence... **Rwy 18**, climb on a heading between 192° CCW to 125°; thence... **Rwy 25**, climb on a heading between 176° CCW to 124°; thence... **Rwy 32**, climb to 7000 then climbing left turn on a heading between 175° CCW to 145°; thence... **Rwy 36**, climb to 6400 then climbing right turn on a heading between 141° CW to 184°; maintain 210K until completion of turn, thence... continue climb to assigned altitude for direction of flight. **Rwys 32, 36**, for climb in visual conditions cross Carbon County Rgnl/ Buck Davis Field at or above 9200 before proceeding on course.

NOTE: **Rwy 14**, multiple trees beginning 121' from DER, 3' left of centerline, up to 40' AGL/5839' MSL. **Rwy 25**, trees 515' from DER, 535' right of centerline, up to 40' AGL/5879' MSL. **Rwy 32**, trees 9544' from DER, 1644' left of centerline, up to 40' AGL/6900' MSL. Trees 11332' from DER, 74' right of centerline, up to 40' AGL/6800' MSL. **Rwy 36**, poles 2599' from DER, 615' left of centerline, 40' AGL/6079' MSL. Poles 2715' from DER, 668' right of centerline, 59' AGL/6098' MSL.

PROVO, UT

PROVO MUNI

DEPARTURE PROCEDURE: Use PROVO DEPARTURE.

RENO, NV

RENO/STEAD (RTS)

AMDT 3A 09183 (FAA)

TAKE-OFF MINIMUMS: CAT A,B only, CAT C,D NA. **Rwys 8, 14**, 1300-2 or std. with a min. climb of 400' per NM to 6500. **Rwy 26**, 1900-2 or std. with a min. climb of 410' per NM to 7200. **Rwy 32**, 2300-2 or std. with a min. climb of 420' per NM to 7200.

DEPARTURE PROCEDURE: **Rwys 8, 32**, climbing right turn heading 100° and FMG VORTAC R-314 to FMG VORTAC. **Rwy 14**, left turn climb direct FMG VORTAC. **Rwy 26**, climbing right turn heading 050° and FMG VORTAC R-314 to FMG VORTAC. **All aircraft** climb in FMG VORTAC holding pattern (NE, right turns, 221° inbound) to depart FMG VORTAC; R-260 CWR R-170 at or above 10000; R-171 CWR R-195 at or above 10500; R-196 CWR R-259 at or above 12000.

19 NOV 2009 to 17 DEC 2009

19 NOV 2009 to 17 DEC 2009

09323

TAKE-OFF MINIMUMS AND (OBSTACLE) DEPARTURE PROCEDURES

TAKE-OFF MINIMUMS AND (OBSTACLE) DEPARTURE PROCEDURES

09323

RENO, NV (CON'T)

RENO/TAHOE INTL (RNO)

AMDT 4 07354 (FAA)

TAKE-OFF MINIMUMS: **Rwy 7**, NA-terrain. **Rwy 16L**, std. w/ min. climb of 730' per NM to 8000, or 600-1½ w/ min. climb of 480' per NM to 8000, or 2700-3 for climb in visual conditions. **Rwy 16R**, std. w/ the following minimum climb requirements: 210 knots or less, 385' per NM to 8000; more than 210 knots, 420' per NM to 8900, or 2700-3 for climb in visual conditions. Resume normal speed after passing FMG VORTAC. **Rwy 25**, std. w/ min. climb of 470' per NM to 7800, or 2700-3 for climb in visual conditions. **Rwy 34L**, std. w/ min. climb of 320' per NM to 7000, or 2700-3 for climb in visual conditions. **Rwy 34R**, std. w/ min. climb of 480' per NM to 7000, or 500-1½ w/ min. climb of 320' per NM to 7000, or 2700-3 for climb in visual conditions.

DEPARTURE PROCEDURE: **Rwys 16L/R**, climb heading 164° to 6600 then climbing left turn direct FMG VORTAC, thence... or for climb in visual conditions: cross Reno/Tahoe Intl Airport at or above 7000 via heading 054° and FMG R-234 to FMG VORTAC, thence... **Rwy 25**, climb heading 254° to 5000 then climbing right turn direct FMG VORTAC, thence... or for climb in visual conditions: cross Reno/Tahoe Intl Airport at or above 7000 via heading 054° and FMG R-234 to FMG VORTAC, thence... **Rwys 34L/R**, climb heading 344° to 7000 then climbing right turn direct FMG VORTAC, thence... or for climb in visual conditions: cross Reno/Tahoe Intl Airport at or above 7000 via heading 054° and FMG R-234 to FMG VORTAC, thence...

... **All aircraft**: continue climb in FMG VORTAC holding pattern (northeast, left turn, 221° inbound) to cross FMG VORTAC at or above MEA/MCA for route of flight.

NOTE: **Rwy 16L**, multiple poles, trees, bushes and terrain beginning 618' from departure end of runway, 133' left of centerline, up to 20' AGL/4961' MSL. **Rwy 16R**, multiple trees 2784' from departure end of runway, 171' right of centerline, up to 20' AGL/4510' MSL. Multiple trees and terrain beginning 746' from departure end of runway, 380' left of centerline, up to 20' AGL/4703' MSL. **Rwy 25**, multiple trees and poles beginning 829' from departure end of runway, 201' right of centerline, up to 103' AGL/4523' MSL. Building 6023' from departure end of runway, 456' right of centerline, 152' AGL/4608' MSL. Fence 222' from departure end of runway, 270' right of centerline, up to 5' AGL/4415' MSL. Multiple trees and poles beginning 500' from departure end of runway, 31' left of centerline, up to 20' AGL/4506' MSL. **Rwy 34L**, multiple trees and poles beginning 1229' from departure end of runway, 180' right of centerline, up to 20' AGL/4498' MSL. Multiple trees beginning 1193' from departure end of runway, 331' left of centerline, up to 20' AGL/4489' MSL. **Rwy 34R**, multiple trees and poles beginning 1067' from departure end of runway, 172' right of centerline, up to 20' AGL/4497' MSL. Multiple trees and poles beginning 1230' from departure end of runway, 350' left of centerline, up to 20' AGL/4498' MSL. Building 1.2 NM from departure end of runway, 1730' right of centerline, 363' AGL/4780' MSL.

RICHFIELD, UT

RICHFIELD MUNI (RIF)

AMDT 1 08157 (FAA)

DEPARTURE PROCEDURE: **Rwy 1**, use RICHFIELD (RNAV) DEPARTURE. **Rwy 19**, use HAMET (RNAV) DEPARTURE.

ROOSEVELT, UT

ROOSEVELT MUNI

TAKE-OFF MINIMUMS: **Rwy 25**, 700-3 or std. with a min. climb of 300' per NM to 6100.

DEPARTURE PROCEDURE: **Rwy 7**, turn right. **Rwy 25**, turn left. **All aircraft**, climb direct MTU VORTAC. Aircraft departing MTU VORTAC R-040 CW R-150, climb on course. All others continue climb in MTU holding pattern (NE, right turns, 213° inbound) to cross MTU VORTAC; R-151 CW R-290 at or above 8000; R-291 CW R-039 at or above 10,000. Then climb on course.

SAFFORD, AZ

SAFFORD RGNL

TAKE-OFF MINIMUMS: IFR departure not authorized.

ST. GEORGE, UT

ST. GEORGE MUNI

TAKE-OFF MINIMUMS: **Rwy 34**, 1500-2 or std. with a min. climb of 325' per NM to 4000.

DEPARTURE PROCEDURE: **Rwy 16**, turn left. **Rwy 34**, turn right. Climb in OZN VOR/DME holding pattern (hold SE, right turns, 296 inbound) to depart OZN VOR/DME at or above MEA for direction of flight.

ST. JOHNS, AZ

ST. JOHNS INDUSTRIAL AIR PARK (SJN)

AMDT 1A 08241 (FAA)

TAKE-OFF MINIMUMS: **Rwy 21**, 400-2 or std. with a min. climb of 205' per NM to 6200.

DEPARTURE PROCEDURE: **Rwys 3, 32**, climbing right turn, **Rwys 14, 21**, climbing left turn. **All aircraft**, climb direct SJN VORTAC. Aircraft departing SJN VORTAC R-240 CW R-080 climb on course. All others continue climb in SJN VORTAC holding pattern (Hold NE, right turns, 239° inbound) to cross SJN VORTAC at or above 9000.

NOTE: **Rwy 14**, 5790' tower 350' right abeam departure end of runway.

19 NOV 2009 to 17 DEC 2009

19 NOV 2009 to 17 DEC 2009

09323

TAKE-OFF MINIMUMS AND (OBSTACLE) DEPARTURE PROCEDURES

TAKE-OFF MINIMUMS AND (OBSTACLE) DEPARTURE PROCEDURES

09323

SALT LAKE CITY, UT

SALT LAKE CITY INTL (SLC)
AMDT 10 09071 (FAA)

TAKE-OFF MINIMUMS: **Rwys 14, 32**, NA, operational.
DEPARTURE PROCEDURE: **Rwys 16L, 16R**, climb to 10000 via heading 161° and FFU R-341 to FFU VORTAC before proceeding on course. **Rwy 17**, climb to 10000 via heading 166° and FFU R-341 to FFU VORTAC before proceeding on course. **Rwys 34L, 34R**, climb to 9000 via heading 341° and OGD R-153 to OGD VORTAC before proceeding on course. **Rwy 35**, climb to 9000 via heading 336° and OGD R-153 to OGD VORTAC before proceeding on course.

NOTE: **Rwy 16L**, vehicle 124' from DER, 14' right of centerline, 15' AGL/4239' MSL. Light pole 988' from DER, 726' right of centerline, 34' AGL/4254' MSL. Pole 1024' from DER, 689' right of centerline, 34' AGL/4254' MSL. **Rwy 17**, vehicles beginning 335' from DER, on centerline, up to 17' AGL/4241' MSL. **Rwy 34R**, post 13' from DER, 349' right of centerline, 3' AGL/4227' MSL. **Rwy 35**, post 56' from DER, 249' left of centerline, 2' AGL/4220' MSL.

SOUTH VALLEY RGNL AIRPORT (U42)

AMDT 4A 09155 (FAA)

TAKE-OFF MINIMUMS: **Rwy 16**, 2400-3 or std. with a min. climb of 295' per NM to 7700. **Rwy 34**, std. with a min. climb of 353' per NM to 9500.

DEPARTURE PROCEDURE: **Rwy 16**, climbing left turn to 9600 via heading 136° and V21 (TCH R-161 FFU R-341) to FFU VORTAC. Aircraft departing FFU R-156 CW R-263 and R-308 CW R-359 climb on course. All others continue climb in FFU VORTAC holding pattern (S, right turns, 008° inbound) to cross FFU VORTAC at or above: R-360 CW R-093 12400; R-094 CW R-138 10600; R-139 CW R-155 11300; R-264 CW R-307 11500. **Rwy 34**, climbing right turn to 9500 via heading 026° and V21 (TCH R-161) to TCH VORTAC. Aircraft departing TCH R-144 CW R-176 and R-217 CW R-355 climb on course. All others continue climb in TCH VORTAC holding pattern (NW, right turns, 116° inbound) to cross TCH VORTAC at or above: R-356 CW R-116 10700; R-117 CW R-143 11600; R-177 CW R-216 10100.

SCOTTSDALE, AZ

SCOTTSDALE (SDL)
AMDT 7 08269 (FAA)

TAKE-OFF MINIMUMS: **Rwy 3**, std. w/ min climb of 440' per NM to 4000, or 3100-3 for climb in visual conditions. **Rwy 21**, std. w/ min. climb of 215' per NM to 4000, or 3100-3 for climb in visual conditions.

DEPARTURE PROCEDURE: **Rwy 3**, climbing left turn to 4000 via heading 220° and PXR VORTAC R-336 southeast bound to PXR VORTAC. Thence...

Or, for climb in visual conditions: cross Scottsdale airport at or above 4500 MSL before proceeding on course. **Rwy 21**, climbing right turn to 4000 via heading 300° and PXR VORTAC R-336 northwest bound then left turn direct PXR VORTAC. Thence... Or, for climb in visual conditions: cross Scottsdale airport at or above 4500 MSL before proceeding on course.

...continue climb on course.

NOTE: **Rwy 3**, multiple light standards beginning 63' from departure end of runway, 445' left of centerline, up to 44' AGL/1554' MSL. Hoist on dike 878' from departure end of runway, 735' left of centerline, 51' AGL/1561' MSL. Dike beginning 1066' from departure end of runway, 316' left of centerline, 38' AGL/1548' MSL. Day marker on dike 1230' from departure end of runway, 5' left of centerline, 39' AGL/1549' MSL. Tree, 269' from departure end of runway, 490' left of centerline, 13' AGL/1523' MSL. Tree 51' from departure end of runway, 279' left of centerline, 6' AGL/1516' MSL. Tree 765' from departure end of runway, 115' left of centerline, 22' AGL/1532' MSL. Road beginning 647' from departure end of runway, 296' left of centerline, 19' AGL/1529' MSL. Tree 227' from departure end of runway, 97' left of centerline, 6' AGL/1516' MSL. Fence beginning 5' from departure end of runway, 338' right of centerline, 6' AGL/1511' MSL. Light standard, 1013' from departure end of runway, 430' right of centerline, 44' AGL/1552' MSL. **Rwy 21**, tree 1072' from departure end of runway, 426' right of centerline, 53' AGL/1497' MSL. Building 316' from departure end of runway, 537' right of centerline, 23' AGL/1467' MSL. Tree 2087' from departure end of runway, 418' left of centerline, 61' AGL/1505' MSL. Tree 1432' from departure end of runway, 438' right of centerline, 38' MSL/1482' MSL. Tree 2234' from departure end of runway, 559' left of centerline, 58' AGL/1502' MSL.

SEDONA, AZ

SEDONA (SEZ)
AMDT 1 08101 (FAA)

TAKE-OFF MINIMUMS: **Rwy 3**, NA- Obstacles.

DEPARTURE PROCEDURE: **Rwy 21**, Use OATES RNAV DEPARTURE.

SHOW LOW, AZ

SHOW LOW RGNL

DEPARTURE PROCEDURE: **Rwys 3, 6**, turn left.

Rwys 21, 24, turn right. All aircraft climb via 345 bearing from SOW NDB to DEHOG INT then climb on course.

19 NOV 2009 to 17 DEC 2009

19 NOV 2009 to 17 DEC 2009

09323

TAKE-OFF MINIMUMS AND (OBSTACLE) DEPARTURE PROCEDURES

SPRINGVILLE, AZ

SPRINGVILLE MUNI

TAKE-OFF MINIMUMS: **Rwy 21**, 1000-2 or std. with a min. climb of 360' per NM to 8400.

DEPARTURE PROCEDURE: **Rwys 3, 11**, climbing left turn to 8400 via heading 360° before proceeding on course. **Rwys 21, 29**, climbing right turn to 8400 via 360° before proceeding on course.

TAYLOR, AZ

TAYLOR MUNI

TAKE-OFF MINIMUMS: **Rwy 21**, 300-1 or std. with a min. climb of 248' per NM to 8100.

DEPARTURE PROCEDURE: **Rwy 3/21**, climb on runway heading to 8000 before turning on course.

TONOPAH, NV

TONOPAH

TAKE-OFF MINIMUMS: **Rwys 11, 29, NA. Rwys 15, 33**, 2600-2 or std. with a min. climb of 260' per NM to 8000.

DEPARTURE PROCEDURE: **Rwy 15**, turn left. **Rwy 33**, turn right. Climb direct TPH VORTAC. Continue climb in holding pattern (NE, right turns, 246° inbound) to depart TPH VORTAC at or above 8000. Climb on course to MEA or assigned altitude.

TOOELE, UT

BOLINDER FIELD-TOOELE VALLEY

TAKE-OFF MINIMUMS: **Rwy 17**, std. with a min. climb of 490' per NM to 11000. **Rwy 35**, std. with a min. climb of 360' per NM to 9000.

DEPARTURE PROCEDURE: Use STACO DEPARTURE.

NOTE: **Rwy 17**, tree 794' from departure end of runway, 277' right of centerline, 35' AGL/4380' MSL. Tree 967' from departure end of runway, 432' right of centerline, 35' AGL/4394' MSL. Tree 1023' from departure end of runway, 313' right of centerline, 35' AGL/4395' MSL.

TUCSON, AZ

MARANA RGNL

TAKE-OFF MINIMUMS: **Rwys 3, 12**, N/A-Obstacles DEPARTURE PROCEDURE: **Rwy 21**, climb to 6500 via heading 360° and TUS R-308 to TOTEC Int/TUS 57 DME, then as filed. **Rwy 30**, climb to 6500 via heading 303° intercept TUS R-308 above 3500, to TOTEC INT/TUS 57 DME, then as filed.

NOTE: **Rwy 21**, road 192' from departure end of runway, 527' left of centerline 15' AGL/2034' MSL.

RYAN FIELD

DEPARTURE PROCEDURE: **Rwy 6R**, turn right; **Rwy 24L**, turn left direct to Ryan NDB. Continue climb in holding pattern (W, right turn 090° inbound) to 5000 before proceeding on course.

TUCSON, AZ (CON'T)

TUCSON INTL (TUS)

AMDT 4A 08241 (FAA)

TAKE-OFF MINIMUMS: **Rwy 3**, 300-1½ or std. w/min. climb of 228' per NM to 3000.

DEPARTURE PROCEDURE: **Rwys 3, 29L, 29R**, climbing right turn direct to TUS VORTAC. **Rwys 11L, 11R** climb via runway heading to 4000 then climbing left turn direct TUS VORTAC. **Rwy 21**, climbing left turn direct to TUS VORTAC. **All aircraft** continue climbing in holding pattern (NW, right turns, 128° inbound) to depart TUS VORTAC at or above 9000.

NOTE: **Rwy 3**, tower 9215' from departure end of runway, 1689' left of centerline, 246' AGL/2831' MSL.

VERNAL, UT

VERNAL RGNL

TAKE-OFF MINIMUMS: **Rwy 16**, 1500-2 or std with a min. climb of 250' per NM to 7000'. **Rwy 25**, 1500-2 or std. with a min. climb of 390' per NM to 7000. **Rwy 34**, 1600-2 pr std. with a min. climb of 330' per NM to 7000'. DEPARTURE PROCEDURE: **Rwys 7, 34**, turn right. **Rwys 16, 25**, turn left. **All aircraft** climb direct VEL.

Aircraft departing V391 S-bound climb on course. All others climb in holding pattern (SE, right turns, 322° inbound). Aircraft SW-bound V208 depart VEL at or above 8400', all others depart VEL at or above 9500'. Continue climb on course to MEA or assigned altitude.

WENDOVER, UT

WENDOVER

TAKE-OFF MINIMUMS: **Rwy 26**, standard with a min. climb of 300' per NM to 7000. **Rwy 30**, NA.

DEPARTURE PROCEDURE: **Rwys 8, 12, 26**, climbing left turn direct BVL VORTAC. Aircraft departing BVL VORTAC R-330 CW R-150 climb on course. All others continue climb in BVL VORTAC holding pattern (Hold NE right turns, 247° inbound) to cross at or above 7400, then climb on course.

WILLCOX, AZ

COCHISE COUNTY

DEPARTURE PROCEDURE: **Rwy 3**, turn right. **Rwy 21**, turn left. **All aircraft** climb direct CIE VORTAC.

09323

WINDOW ROCK, AZ

WINDOW ROCK

TAKE-OFF MINIMUMS: Rwy 2, 700-2 or std. with a min. climb of 500' per NM to 8000. Rwy 20, 600-2 or std. with a min. climb of 260' per NM to 8200.

DEPARTURE PROCEDURE: Rwy 2, turn right.

Rwy 20, turn left direct to GUP VORTAC before proceeding on course.

NOTE: Rwy 2, terrain 3832' from departure end of runway, 1025' right of centerline, 6926' MSL. Poles 5220' from departure end of runway, 245' right of centerline, 180' AGL/6922' MSL. Tower 7067' from departure end of runway, 3072' left of centerline, 71' AGL/7316' MSL. Terrain 7449' from departure end of runway, 1612' left of centerline, 6991' MSL. Terrain 8776' from departure end of runway, 1851' left of centerline, 7109' MSL. Tree 9665' from departure end of runway, 1326' right of centerline, 7340' MSL. Tree 11326' from departure end of runway, 355' left of centerline, 7351' MSL. Rwy 20, trees 1018' from departure end of runway, 620' left of centerline, 30' AGL/6768' MSL.

WINNEMUCCA, NV

WINNEMUCCA MUNI

TAKE-OFF MINIMUMS: Rwy 2, 2500-2 or std. with a min. climb of 450' per NM to 6800. Rwy 14, 20, 3200-2 or std. with a min. climb of 520' per NM to 7500.

DEPARTURE PROCEDURE: Rwy 14, 20, turn right.

Rwy 2, turn left. Rwy 32, climb straight ahead. All aircraft climb via INA R-326 to 6700 or above within 12 NM, then climbing left turn return to INA VOR/DME via R-326. Continue climb in INA VOR/DME holding pattern (hold NW, right turns, 146" inbound) to depart INA VOR/DME at or above 11000. Southbound aircraft continue via INA R-146 direct Fesko Int. Northbound aircraft continue via INA R-326 and SDO R-144 direct SDO VORTAC.

YUMA MCAS/ YUMA INTL(KNYL)

YUMA, AZ 09323

Diverse departures not auth between 360° CW 055° from 25 NM to 30 NM.

Rwy 3L: Cross DER at or above 35' AGL/228' MSL. Diverse departures auth. Fr 083° CW 107°, std with minimum climb of 225'/NM to 3500'.

Rwy 3R: Cross DER at or above 35' AGL/242' MSL. Diverse departures auth. Fr 083° CW 107°, std with minimum climb of 225'/NM to 3500'.

Rwy 21L: Cross DER at or above 35' AGL/223' MSL. Diverse departures auth.

Rwy 21R: Cross DER at or above 35' AGL/227' MSL. Diverse departures auth.

Rwy 8: Cross DER at or above 35' AGL/231' MSL. Diverse departures auth. Fr 069° CW 123°, std with minimum climb of 230'/NM to 3500'.

Rwy 26: Cross DER at or above 35' AGL/230' MSL. Diverse departures auth.

Rwy 17: Cross DER at or above 35' AGL/217' MSL. Diverse departures auth. Fr 068° CW 109°, std with minimum climb of 220'/NM to 3500'.

Rwy 35: Cross DER at or above 35' AGL/231' MSL. Diverse departures auth.

19 NOV 2009 to 17 DEC 2009

19 NOV 2009 to 17 DEC 2009

09323