

MOUNTY FOUR DEPARTURE

SL-690 (FAA)

FAYETTEVILLE, NORTH CAROLINA

**TOP ALTITUDE:
2000**

ATIS
121.25
GND CON
121.7 348.6
FAYETTEVILLE TOWER
118.3 269.2
FAYETTEVILLE DEP CON
133.0 295.0

RALEIGH-DURHAM
117.2 RDU
Chan 119
N35°52.35'-W78°47.00'
L-36, H-9-12

GREENSBORO
116.2 GSO
Chan 109
N36°02.74'-W79°58.58'
L-25-36, H-9-12

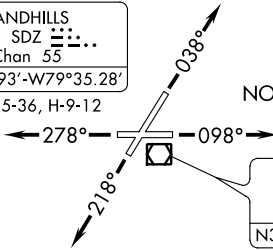
LIBERTY
113.0 LIB
Chan 77
N35°48.70'-W79°36.76'
L-25-36, H-9-12

TAR RIVER
117.8 TYI
Chan 125
N35°58.60'-W77°42.22'
L-35-36, H-9-12

SANDHILLS
111.8 SDZ
Chan 55
N35°12.93'-W79°35.28'
L-25-35-36, H-9-12

NOTE: RADAR Required.

CHARLOTTE
115.0 CLT
Chan 97
N35°11.42'-W80°57.11'
L-25-36, H-9-12



FAYETTEVILLE
108.8 FAY
Chan 25
N34°59.13'-W78°52.50'
L-35-36

CHESTERFIELD
108.2 CTF
Chan 19
N34°39.03'-W80°16.49'
L-24-25-36

WILMINGTON
117.0 ILM
Chan 117
N34°21.10'-W77°52.46'
L-23-35, H-9-12

FLORENCE
115.2 FLO
Chan 99
N34°13.98'-W79°39.43'
L-24-35-36, H-9-12

GRAND STRAND
117.6 CRE
Chan 123
N33°48.83'-W78°43.47'
L-35

TAKEOFF MINIMUMS:
Rwys 4, 22, 10, 28: Standard.

TAKEOFF OBSTACLE NOTES:

- Rwy 4: Trees beginning 154' from DER, 117' right of centerline, up to 79' AGL/189' MSL. Trees beginning 344' from DER, 240' left of centerline, up to 63' AGL/173' MSL.
- Rwy 10: Trees beginning 182' from DER, 295' right of centerline, up to 43' AGL/223' MSL. Trees beginning 451' from DER, 383' left of centerline, up to 62' AGL/242' MSL.
- Rwy 22: Vehicle on road 98' from DER, left and right of centerline, up to 15' AGL/186' MSL. Trees beginning 1059' from DER, 551' right of centerline, up to 94' AGL/264' MSL.
- Rwy 28: Pole and trees beginning 199' from DER, 307' left of centerline, up to 34' AGL/204' MSL. Trees beginning 593' from DER, 96' right of centerline, up to 79' AGL/239' MSL.

NOTE: Chart not to scale.

DEPARTURE ROUTE DESCRIPTION

- TAKEOFF RWY 4: Climb heading 038° or as assigned. Thence. . .
- TAKEOFF RWY 10: Climb heading 098° or as assigned. Thence. . .
- TAKEOFF RWY 22: Climb heading 218° or as assigned. Thence. . .
- TAKEOFF RWY 28: Climb heading 278° or as assigned. Thence. . .

. . . maintain 2000 feet or assigned altitude. Expect vectors to join filed route. Expect further clearance to filed altitude 10 minutes after departure.

MOUNTY FOUR DEPARTURE

SE-2. 27 APR 2017 to 25 MAY 2017

SE-2. 27 APR 2017 to 25 MAY 2017