

CLANG FIVE ARRIVAL  
(CLANG, CLANG5) 11069

(CLANG, CLANG5) 11069  
CLANG FIVE ARRIVAL

INDIANAPOLIS APP CON  
119.3 317.8  
INDIANAPOLIS INTL ATIS  
134.25

MARION  
108.6 MZZ  
Chan 23

WGNER  
N40°44.06'  
W85°15.39'

FORT WAYNE  
117.8 FWA  
Chan 125  
N40°58.74'  
W85°11.28'  
L-27, H-5-10

MUNCIE  
114.4 MIE  
Chan 91  
N40°14.24'  
W85°23.64'

ROSEWOOD  
117.5 ROD  
Chan 122  
N40°17.27'  
W84°02.59'  
L-27, H-10

BELLAIRE  
117.1 AIR  
Chan 118

BRICKYARD  
116.3 VHP  
Chan 110

CLANG  
N40°01.06'  
W85°54.22'

INDIANAPOLIS  
RGNL

EAGLE CREEK  
AIRPARK  
INDIANAPOLIS  
INTL

SHELBYVILLE  
112.0 SHB  
Chan 57

PENDS  
N40°05.96'-W85°42.91'

VERTICAL NAVIGATION PLANNING INFORMATION

Expect clearance to cross at 11,000'. When Indianapolis Intl  
Rwys 23L/R in use expect to cross at 11,000' and 250 KTS.

DAYTON  
114.5 DQN  
Chan 92  
N40°00.98'  
W84°23.81'  
L-27, H-10

DAYTON TRANSITION (DQN, CLANG5): From over DQN VOR/DME via DQN R-287 and MIE R-109 to MIE VOR/DME, then via MIE R-244 to CLANG INT. Thence. . .

EMPTY TRANSITION (EMPTY, CLANG5): From over EMPTY INT via DQN R-094 to DQN VOR/DME, then via DQN R-287 and MIE R-109 to MIE VOR/DME, then via MIE R-244 to CLANG INT. Thence. . .

FORT WAYNE TRANSITION (FWA, CLANG5): From over FWA VORTAC via FWA R-192 and MIE R-015 to MIE VOR/DME, then via MIE R-244 to CLANG INT. Thence. . .

ROSEWOOD TRANSITION (ROD, CLANG5): From over ROD VORTAC via ROD R-273 and MIE R-090 to MIE VOR/DME, then via MIE R-244 to CLANG INT. Thence. . .

. . . . From over CLANG INT, expect vectors, then to final approach course.

NOTE: Chart not to scale.

INDIANAPOLIS, INDIANA

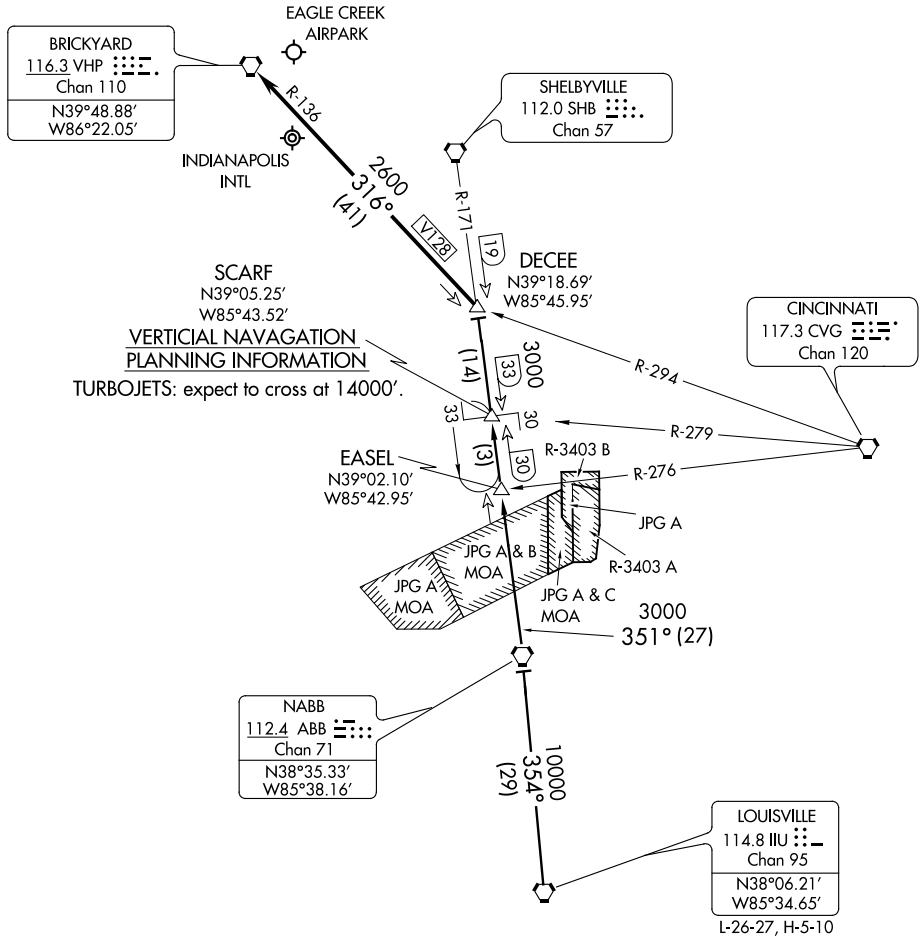
INDIANAPOLIS, INDIANA

ST-203 (FAA)

# DECEE FIVE ARRIVAL

INDIANAPOLIS, INDIANA

INDIANAPOLIS APP CON  
 119.3 317.8  
 ATIS  
 134.25



EC-2, 08 JAN 2015 to 05 FEB 2015

EC-2, 08 JAN 2015 to 05 FEB 2015

NOTE: Chart not to scale.

**LOUISVILLE TRANSITION (IIU.DECEE5):** From over IIU VORTAC on IIU R-354 to EASEL INT, then on ABB R-351 and SHB R-171 to SCARF INT, then on SHB R-171 to DECEE INT.

... From over DECEE INT, via VHP R-136 to VHP VORTAC, expect radar vector to final approach course after DECEE.

# DECEE FIVE ARRIVAL

INDIANAPOLIS, INDIANA

# RACYR TWO ARRIVAL

INDIANAPOLIS, INDIANA

INDIANAPOLIS APP CON  
119.3 317.8  
ATIS 134.25

BRICKYARD 116.3 VHP Chan 110
N39°48.88' W86°22.05'

INDIANAPOLIS EXECUTIVE

INDIANAPOLIS METROPOLITAN

EAGLE CREEK AIRPARK

INDIANAPOLIS RGNL

KELLY  
N39°24.82'-W86°40.29'  
TURBOJET VERTICAL  
NAVIGATION PLANNING  
Landing all other Runways:  
Expect 11000

3000

029° (28)

TERRE HAUTE 115.3 TTH Chan 100
--------------------------------------

GREENWOOD MUNI

SHELBYVILLE 112.0 SHB Chan 57
-------------------------------------

RACYR  
N39°06.71'-W86°53.84'  
TURBOJET VERTICAL  
NAVIGATION PLANNING  
When Landing Runway 5R/L:  
Expect 11000 and 250K

EC-2, 08 JAN 2015 to 05 FEB 2015

BIBLE GROVE 109.0 BIB Chan 27
N38°55.22' W88°28.91'
L-27, H-5

HOOSIER 110.2 OOM Chan 39
---------------------------------

POCKET CITY 113.3 PXV Chan 80
N37°55.70'-W87°45.74'
L-16, H-5

NOTE: Radar required.

NOTE: Chart not to scale.

## ARRIVAL ROUTE DESCRIPTION

**BIBLE GROVE TRANSITION (BIB.RACYR2):** From over BIB VORTAC via BIB R-078 and OOM R-264 to RACYR INT. Thence....

**POCKET CITY TRANSITION (PXV.RACYR2):** From over PXV VORTAC via PXV R-027 and VHP R-209 to RACYR INT. Thence....

....From over RACYR INT, via VHP R-209 to KELLY INT, thence via VHP R-209 to VHP VORTAC. Expect radar vectors to final approach course.

**LOST COMMUNICATIONS:** For Indianapolis Rgnl, Indianapolis Metropolitan, and Greenwood Muni - at VHP, proceed direct SHB VORTAC. Maintain 3000 until SHB VORTAC.

# RACYR TWO ARRIVAL

INDIANAPOLIS, INDIANA

EC-2, 08 JAN 2015 to 05 FEB 2015