

LOC RWY 21

INDIANAPOLIS/ EAGLE CREEK AIRPARK (EYE)

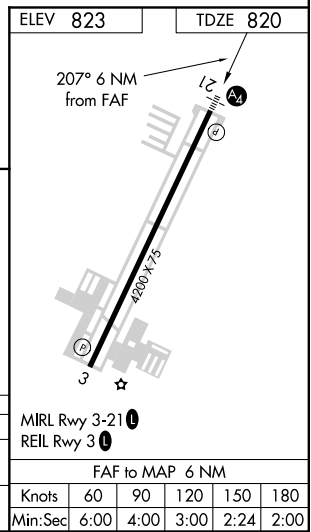
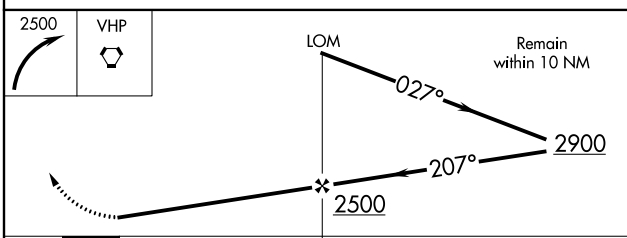
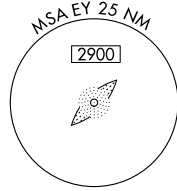
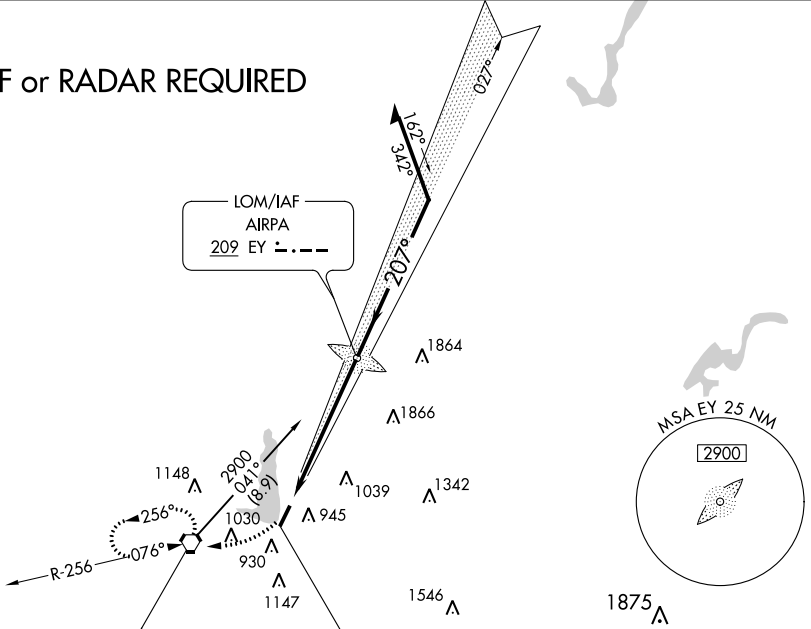
LOC I-EYE 111.5	APP CRS 207°	Rwy Idg 4200
		TDZE 820
		Apt Elev 823

▼ Inoperative components table does not apply to Cat C.
▲ NA If local altimeter setting not received, use Indianapolis Intl altimeter setting, and increase all MDA's 20 feet.

MALS **▲** **≡** MISSED APPROACH: Climbing right turn to 2500 direct VHP VORTAC and hold.

ASOS 121.575	INDIANAPOLIS APP CON 119.05 317.8	CLNC DEL 128.6	UNICOM 122.8 (CTAF) 0
------------------------	---	--------------------------	---------------------------------

ADF or RADAR REQUIRED



CATEGORY	A	B	C	D
S-21	1320-3/4 500 (500-3/4)		1320-1 1/4 500 (500-1 1/4)	NA
CIRCLING	1320-1 497 (500-1)		1320-1 1/2 497 (500-1 1/2)	NA

ELEV 823	TDZE 820
MIRL Rwy 3-21 0	
REIL Rwy 3 0	
FAF to MAP 6 NM	
Knots	60 90 120 150 180
Min:Sec	6:00 4:00 3:00 2:24 2:00

EC-2, 08 JAN 2015 to 05 FEB 2015

EC-2, 08 JAN 2015 to 05 FEB 2015

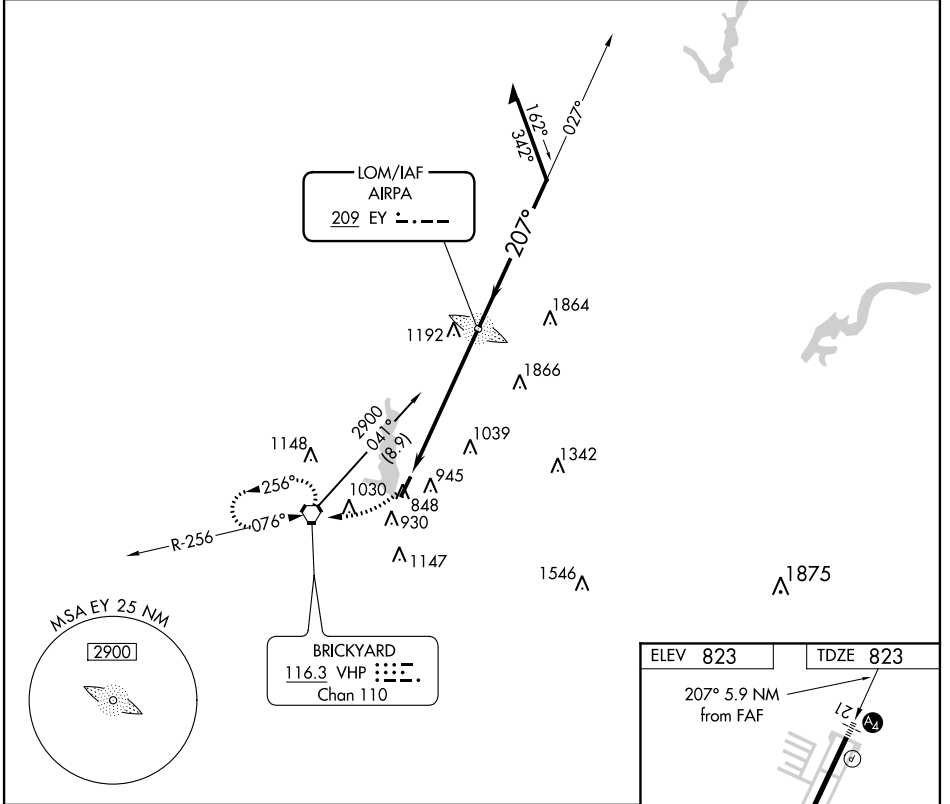
NDB RWY 21

INDIANAPOLIS/ EAGLE CREEK AIRPARK (EYE)

LOM EY 209	APP CRS 207°	Rwy Idg 4200
		TDZE 823
		Apt Elev 823

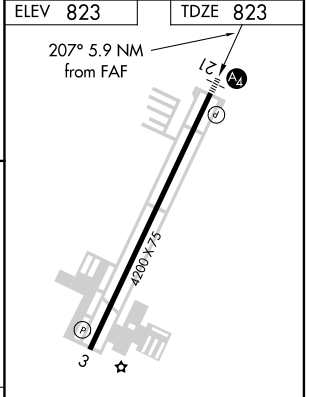
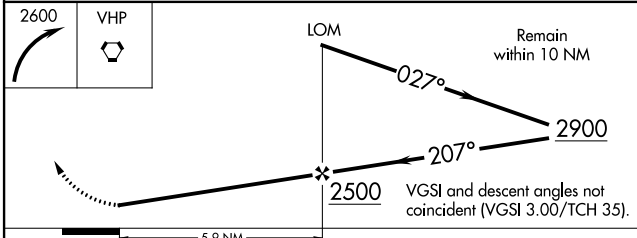
Inoperative table does not apply to Cat C. NA When local altimeter setting not received, use Indianapolis Intl altimeter setting and increase all MDA 20 feet.	MALSF 	MISSED APPROACH: Climbing right turn to 2600 direct VHP VORTAC and hold.
---	-----------	--

ASOS 121.575	INDIANAPOLIS APP CON 119.05 317.8	CLNC DEL 128.6	UNICOM 122.8 (CTAF) 0
------------------------	---	--------------------------	---------------------------------



EC-2, 08 JAN 2015 to 05 FEB 2015

EC-2, 08 JAN 2015 to 05 FEB 2015



CATEGORY	A	B	C	D
S-21	1440-3/4 617 (700-3/4)		1440-1 3/4 617 (700-1 3/4)	NA
CIRCLING	1440-1 617 (700-1)		1440-1 3/4 617 (700-1 3/4)	NA

MIRL Rwy 3-21 0				
REIL Rwy 3 0				
FAF to MAP 5.9 NM				
Knots	60	90	120	150
Min:Sec	5:54	3:56	2:57	2:22
				1:58

NDB RWY 21

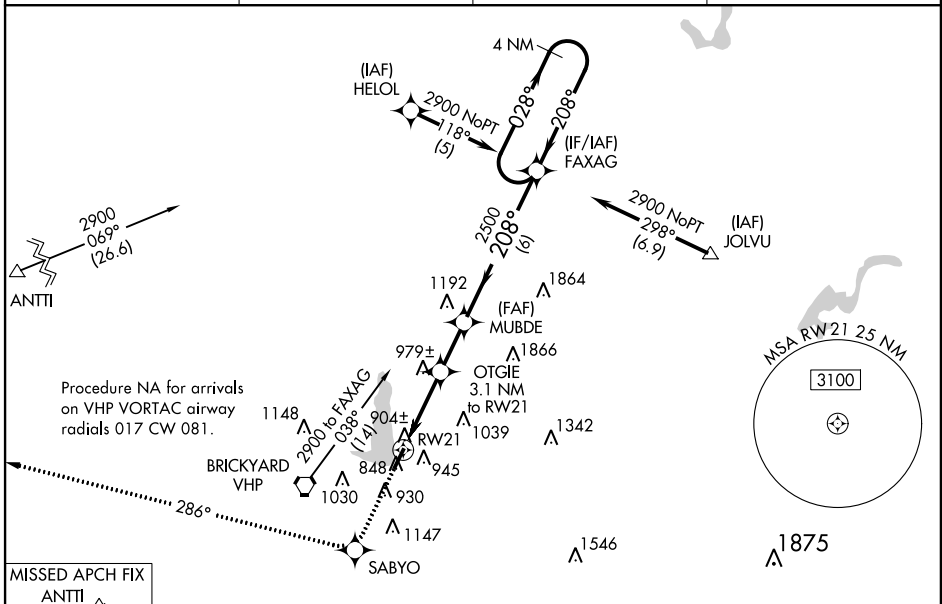
WAAS CH 82509 W21A	APP CRS 208°	Rwy Idg TDZE Apt Elev	4200 823 823
--	------------------------	-----------------------------	---

RNAV (GPS) RWY 21

INDIANAPOLIS/ EAGLE CREEK AIRPARK (EYE)

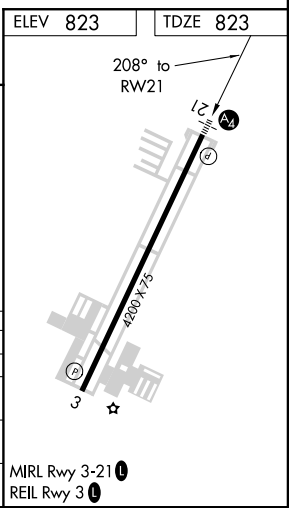
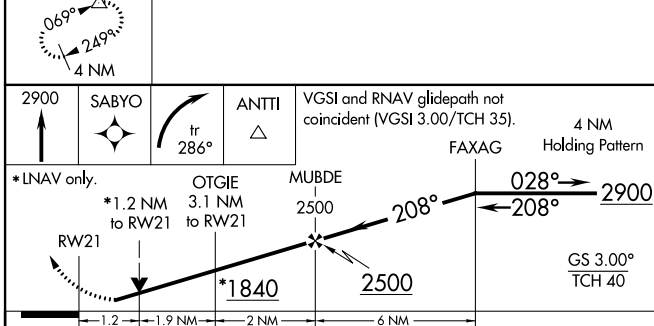
<p>▼ DME/DME RNP-0.3 NA. Visibility reduction by helicopters NA. For uncompensated Baro-VNAV systems, LNAV/VNAV NA below -16°C (4°F) or above 54°C (130°F). Baro-VNAV and VDP NA when using Indianapolis Intl altimeter setting. When local altimeter setting not received use Indianapolis Intl altimeter setting and increase all DA/MDA 20 feet. Inoperative table does not apply.</p>	<p>MALS</p>	<p>MISSED APPROACH: Climb to 2900 direct SABYO and right turn via 286° track to ANTTI and hold.</p>
---	--------------------	---

ASOS 121.575	INDIANAPOLIS APP CON 119.05 317.8	CLNC DEL 128.6	UNICOM 122.8 (CTAF)
------------------------	---	--------------------------	-------------------------------



EC-2, 08 JAN 2015 to 05 FEB 2015

EC-2, 08 JAN 2015 to 05 FEB 2015



CATEGORY	A	B	C	D
LPV DA	1097-3/4 274 (300-3/4)			NA
LNAV/VNAV DA	1165-1 342 (400-1 1/4)			NA
LNAV MDA	1240-3/4 417 (500-3/4)		1240-1 417 (500-1 1/4)	NA
CIRCLING	1300-1 477 (500-1)		1300-1 1/2 477 (500-1 1/2)	NA

RNAV (GPS) RWY 21

INDIANAPOLIS, INDIANA

AL-5733 (FAA)

VOR-A

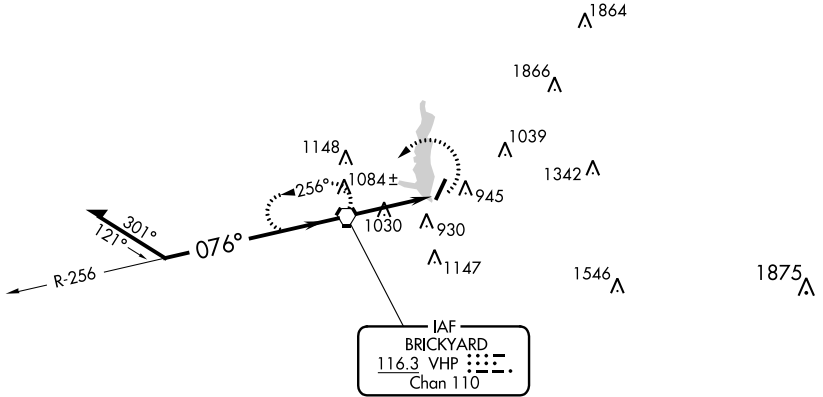
INDIANAPOLIS/ EAGLE CREEK AIRPARK (EYE)

VORTAC VHP 116.3 Chan 110	APP CRS 076°	Rwy Idg TDZE Apt Elev N/A N/A 823
---	------------------------	---

When local altimeter setting not received, use Indianapolis Intl altimeter setting and increase all MDA 20 feet.

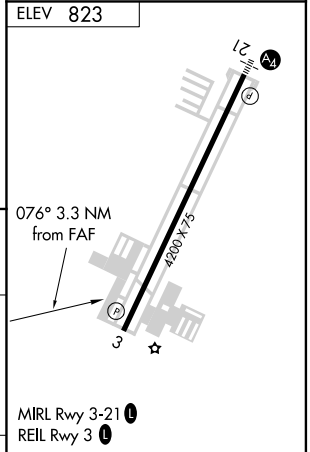
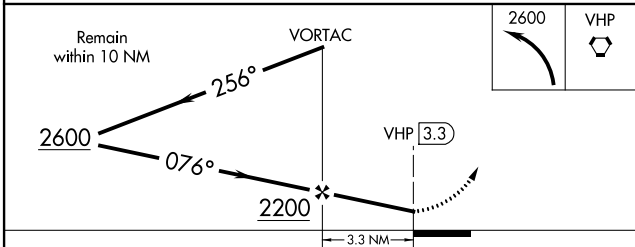
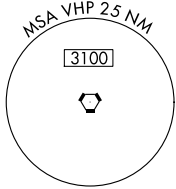
MISSED APPROACH: Climbing left turn to 2600 direct VHP VORTAC and hold.

ASOS 121.575	INDIANAPOLIS APP CON 119.05 317.8	CLNC DEL 128.6	UNICOM 122.8 (CTAF)
------------------------	---	--------------------------	-------------------------------



EC-2, 08 JAN 2015 to 05 FEB 2015

EC-2, 08 JAN 2015 to 05 FEB 2015



CATEGORY	A	B	C	D	FAF to MAP 3.3 NM					
CIRCLING	1300-1	477 (500-1)	1300-1½ 477 (500-1½)	NA	Knots	60	90	120	150	180
					Min:Sec	3:18	2:12	1:39	1:19	1:06

INDIANAPOLIS, INDIANA
Amdt 7 11237

INDIANAPOLIS/ EAGLE CREEK AIRPARK (EYE)

39°50'N - 86°18'W

VOR-A