

### ARRIVAL ROUTE DESCRIPTION

ALBANY TRANSITION (ALB.WIPOR3):

HANCOCK TRANSITION (HNK.WIPOR3):

HINGZ TRANSITION (HINGZ.WIPOR3):

From WIPOR on track 142° to ORW VOR/DME, then on track 129° to SAUGY.

Landing KPYD Rwy 5, 34: From SAUGY on track 129° to LAFAY, then on track 129°.

Expect radar vectors to final approach course.

Landing KPYD Rwy 16, 23: From SAUGY on track 055° to WAWIK, then on track 049° to SEABE. Then on track 047° to NOSUH, then on track 047°. Expect radar vectors to final approach course.

Landing KOQU, KUUU, KEWB, all rwys: From WIPOR on track 142 to ORW VOR/DME, then on track 129° to SAUGY, then on track 129° to LAFAY, then on track 129°. Expect radar vectors to destination airport and final approach course.

Landing KSFZ all rwys: From WIPOR on track 142° to ORW VOR/DME, then on track 129° to SAUGY, then on track 055° to WAWIK, then on track 049° to SEABE, then on track 047° to NOSUH, then on track 047°. Expect radar vectors to final approach course.

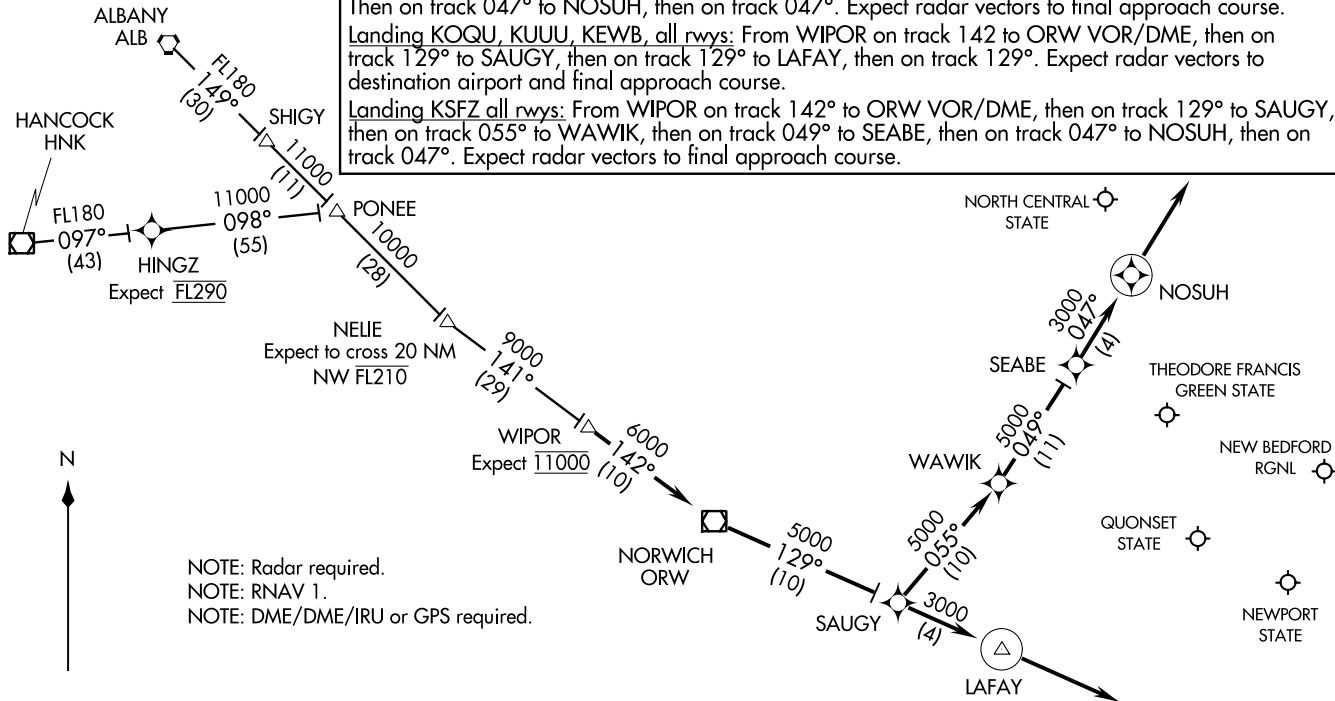
WIPOR THREE ARRIVAL (RNAV)  
(WIPOR.WIPOR3) 13NOV14

(WIPOR.WIPOR3) 17173  
WIPOR THREE ARRIVAL (RNAV)

AL-333 (FAA)

PROVIDENCE, RHODE ISLAND

NEW BEDFORD RGNL  
ATIS 126.85  
THEODORE FRANCIS GREEN STATE  
D-ATIS 124.2  
PROVIDENCE APP CON ★  
123.675 244.875



NOTE: Radar required.  
NOTE: RNAV 1.  
NOTE: DME/DME/IRU or GPS required.

NOTE: Chart not to scale.