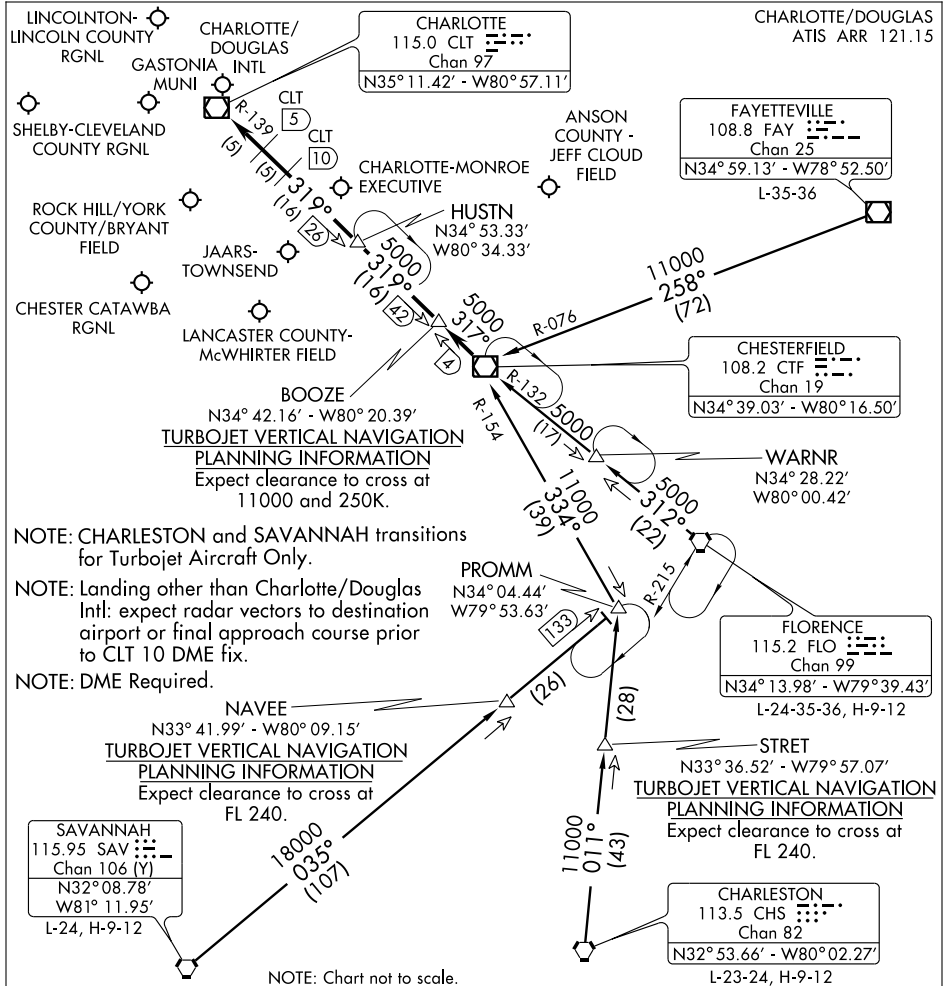


# CHESTERFIELD THREE ARRIVAL

CHARLOTTE, NORTH CAROLINA



SE-2, 31 MAY 2012 to 28 JUN 2012

SE-2, 31 MAY 2012 to 28 JUN 2012

NOTE: CHARLESTON and SAVANNAH transitions for Turbojet Aircraft Only.

NOTE: Landing other than Charlotte/Douglas Intl: expect radar vectors to destination airport or final approach course prior to CLT 10 DME fix.

NOTE: DME Required.

NAVEE  
 N33° 41.99' - W80° 09.15'  
**TURBOJET VERTICAL NAVIGATION PLANNING INFORMATION**  
 Expect clearance to cross at FL 240.

STRET  
 N33° 36.52' - W79° 57.07'  
**TURBOJET VERTICAL NAVIGATION PLANNING INFORMATION**  
 Expect clearance to cross at FL 240.

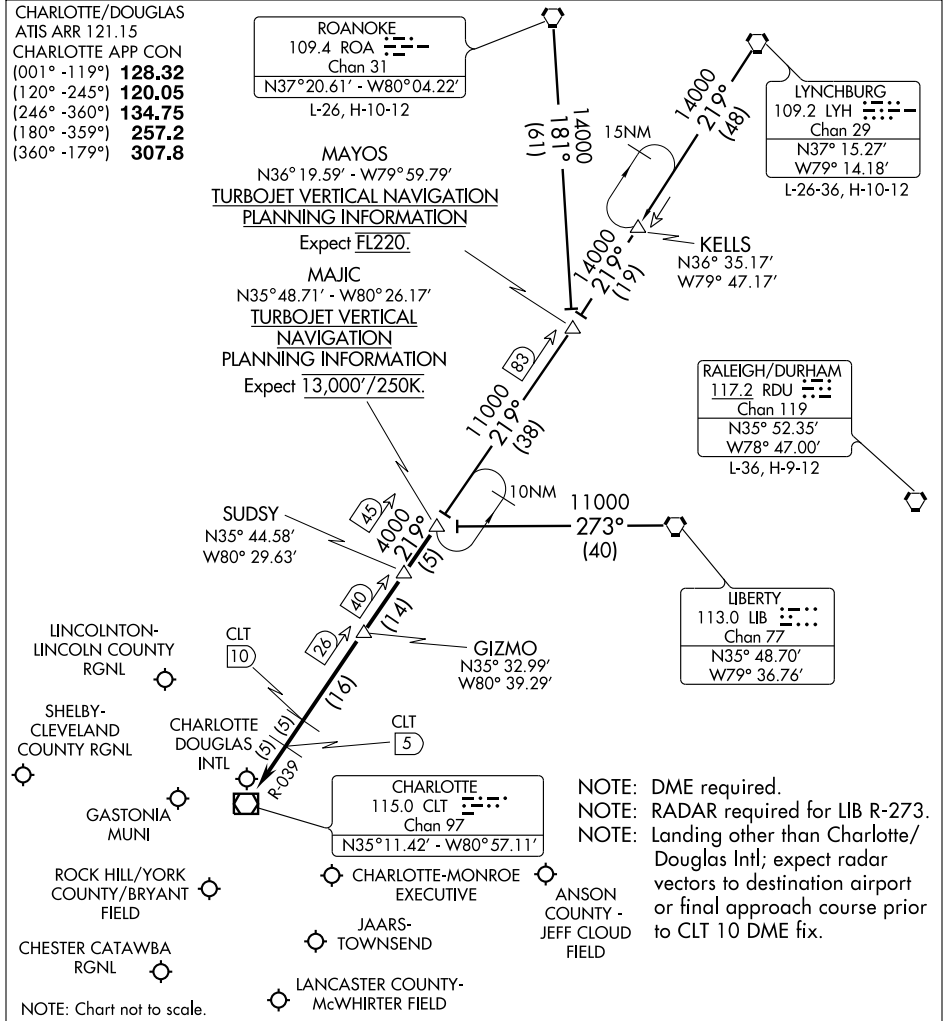
- CHARLESTON TRANSITION (CHS.CTF3):** From over CHS VORTAC via CHS R-011 to PROMM INT then via CTF R-154 to CTF VOR/DME. Thence....
- FAYETTEVILLE TRANSITION (FAY.CTF3):** From over FAY VOR/DME via FAY R-258 and CTF R-076 to CTF VOR/DME. Thence....
- FLORENCE TRANSITION (FLO.CTF3):** From over FLO VORTAC via FLO R-312 and CTF R-132 to CTF VOR/DME. Thence....
- SAVANNAH TRANSITION (SAV.CTF3):** From over SAV VORTAC via SAV R-035 to PROMM INT then via CTF R-154 to CTF VOR/DME. Thence....
- ... .From over CTF VOR/DME via CTF R-317 to BOOZE, then via CLT R-139 to:
- (LANDING NORTH) HUSTN INT:** Expect radar vectors to final approach course.
- (LANDING SOUTH) CLT VOR/DME:** Expect radar vectors to final approach course prior to CLT 5 DME fix.

# CHESTERFIELD THREE ARRIVAL

CHARLOTTE, NORTH CAROLINA

# MAJIC ONE ARRIVAL

CHARLOTTE, NORTH CAROLINA



SE-2, 31 MAY 2012 to 28 JUN 2012

SE-2, 31 MAY 2012 to 28 JUN 2012

**LIBERTY TRANSITION (LIB.MAJIC1):** From over LIB VORTAC via LIB R-273 to MAJIC INT. Thence. . . .

**LYNCHBURG TRANSITION (LYH.MAJIC1):** From over LYH VORTAC via LYH R-219 and CLT R-039 to MAJIC INT. Thence. . . .

**ROANOKE TRANSITION (ROA.MAJIC1):** From over ROA VORTAC via ROA R-181 and CLT R-039 to MAJIC INT. Thence. . . .

. . . .From over MAJIC via CLT R-039 to:

**LANDING NORTH:** CLT VOR/DME. Expect radar vectors to final approach course prior to the CLT 5 DME fix.

**LANDING SOUTH:** GIZMO. Expect radar vectors to final approach course.

# MAJIC ONE ARRIVAL

CHARLOTTE, NORTH CAROLINA



ARRIVAL ROUTE DESCRIPTION

CHARLESTON TRANSITION (HVQ.SHINE6): From over HVQ VORTAC via HVQ R-192 and HVM R-012 to HVM VORTAC, then via HVM R-156 to SHINE INT. Thence. . . .

FALMOUTH TRANSITION (FLM.SHINE6): From over FLM VOR/DME via FLM R-145 and HVM R-327 to HVM VORTAC, then via HVM R-156 to SHINE INT. Thence. . . .

HOLSTON MOUNTAIN TRANSITION (HVM.SHINE6): From over HVM VORTAC via HVM R-156 to SHINE INT. Thence. . . .

VOLUNTEER TRANSITION (VXV.SHINE6): From over VXV VORTAC via VXV R-094 and CLT R-314 to SHINE INT. Thence. . . .

LANDING NORTH: From over SHINE INT on CLT R-314 to CLT VOR/DME, Expect radar vectors to final approach course prior to CLT 5 DME.

LANDING SOUTH: From over SHINE INT on CLT R-314 to FOSSE INT, Expect radar vectors to final approach course.

SE-2, 31 MAY 2012 to 28 JUN 2012

SE-2, 31 MAY 2012 to 28 JUN 2012

CHARLOTTE/DOUGLAS  
ATIS ARR 121.15

SHELBY-CLEVELAND  
COUNTY RGNL

LINCOLNTON-  
LINCOLN COUNTY  
RGNL

CHARLOTTE/  
DOUGLAS  
INTL

ROWAN COUNTY

STANLY  
COUNTY

SPARTANBURG  
115.7 SPA  
Chan 104

GASTONIA MUNI

CONCORD  
RGNL

CHARLOTTE  
115.0 CLT  
Chan 97  
N35°11.42' - W80°57.11'

NOTE: Landing other than Charlotte/Douglas  
Intl: expect radar vectors to destination  
airport or final approach course prior  
to the CLT 10 DME fix.

NOTE: Chart not to scale.

ROCK HILL/YORK  
COUNTY/BRYANT  
FIELD

CHARLOTTE-MONROE  
EXECUTIVE

ANSON  
COUNTY -  
JEFF CLOUD  
FIELD

LOCKS  
N34°55.66'  
W81°17.54'

CHESTER CATAWBA  
RGNL

JAARS-TOWNSEND

LANCASTER COUNTY-  
McWHIRTER FIELD

GREENWOOD  
115.5 GRD  
Chan 102  
N34°15.09' - W82°09.25'

UNARM  
N34°39.29'  
W81°38.56'

ADENA  
N34°43.98' - W81°32.57'

**TURBOJET VERTICAL NAVIGATION  
PLANNING INFORMATION**

Landing South: Expect clearance to  
cross at 12,000'/250K.  
Landing North: Expect clearance to  
cross at 11,000'/250K.

ATLANTA  
116.9 ATL  
Chan 116  
N33°37.74' - W84°26.10'  
L-18, H-9-12

11000  
071°  
(120)

LUKES  
N34°01.85' - W82°09.44'

**TURBOJET VERTICAL NAVIGATION  
PLANNING INFORMATION**

Expect clearance to cross at FL240

COLLIERS  
113.9 IRQ  
Chan 86  
N33°42.44' - W82°09.72'  
L-24, H-9-12

COLUMBIA  
114.7 CAE  
Chan 94

**ATLANTA TRANSITION (ATL.UNARM1):** From over ATL VORTAC  
via ATL R-071 and GRD R-254 to GRD VORTAC. Then via GRD  
R-047 and CLT R-232 to UNARM INT. Thence. . . .  
**COLLIERS TRANSITION (IRQ.UNARM1):** From over IRQ VORTAC  
via IRQ R-005 and GRD R-182 to GRD VORTAC. Then via GRD  
R-047 and CLT R-232 to UNARM INT. Thence. . . .

. . . . From over UNARM INT via CLT R-232 to:  
**LANDING NORTH:** LOCKS INT. Expect radar vectors to final  
approach course.  
**LANDING SOUTH:** CLT VOR/DME. Expect radar vectors to  
final approach course prior to CLT 5 DME fix.

