




BOBCAT FIVE DEPARTURE
(BOB5.BOB) 11349


BOBCAT FIVE DEPARTURE
(BOB5.BOB) 11349

ASOS
135.775
CLNC DEL
132.55
CTAF
122.7
CHARLOTTE DEP CON
120.05 307.8


VOLUNTEER
116.4 XVV 
Chan 111
N35°54.29'-W83°53.68'
L-25, H-9-12

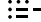
SUGARLOAF MOUNTAIN
112.2 SUG 
Chan 59
N35°24.39'-W82°16.12'
L-25

CHARLOTTE
115.0 CLT 
Chan 97
N35°11.42'-W80°57.11'

HARRIS
109.8 HRS 
Chan 35
N34°56.58'-W83°54.94'
L-25, H-9-12

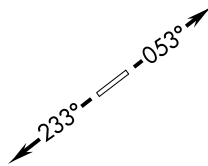
HARAY
N35°07.76'
W081°45.69'
14000 *2900
270°
270° (40)

CHOO CHOO
115.8 GQO 
Chan 105
N34°57.68'-W85°09.20'
L-25, H-9-12

SPARTANBURG
115.7 SPA 
Chan 104
N35°02.02'-W81°55.62'
L-24-25, H-9-12

ZAVER
N35°05.31'
W082°16.01'

DEBIE
N34°55.82'
W081°48.53'




TAKEOFF OBSTACLE NOTES:

Rwy 5: Trees beginning 150' from DER, 202' left of centerline, up to 100' AGL/799' MSL. Vehicles on road and trees beginning 199' from DER, 259' right of centerline, up to 100' AGL/789' MSL.

- NOTE: For Turbojets only.
- NOTE: Radar and DME Required.
- NOTE: Transponder code will be issued via Charlotte Clearance Delivery.
- NOTE: Do not exceed 280 KIAS until advised by ATC.



TAKEOFF MINIMUMS:
Rwys 5, 23: Standard.

ATHENS
109.6 AHN 
Chan 33
N33°56.86'-W83°19.49'
L-18, H-9-12

NOTE: Chart not to scale.

MONROE, NORTH CAROLINA
CHARLOTTE-MONROE EXECUTIVE (EQY)

CHARLOTTE-MONROE EXECUTIVE (EQY)
MONROE, NORTH CAROLINA
SL-5726 (FAA)

DEPARTURE ROUTE DESCRIPTION

TAKEOFF RUNWAY 5: Climb heading 053°, thence. . . .

TAKEOFF RUNWAY 23: Climb heading 233°, thence. . . .

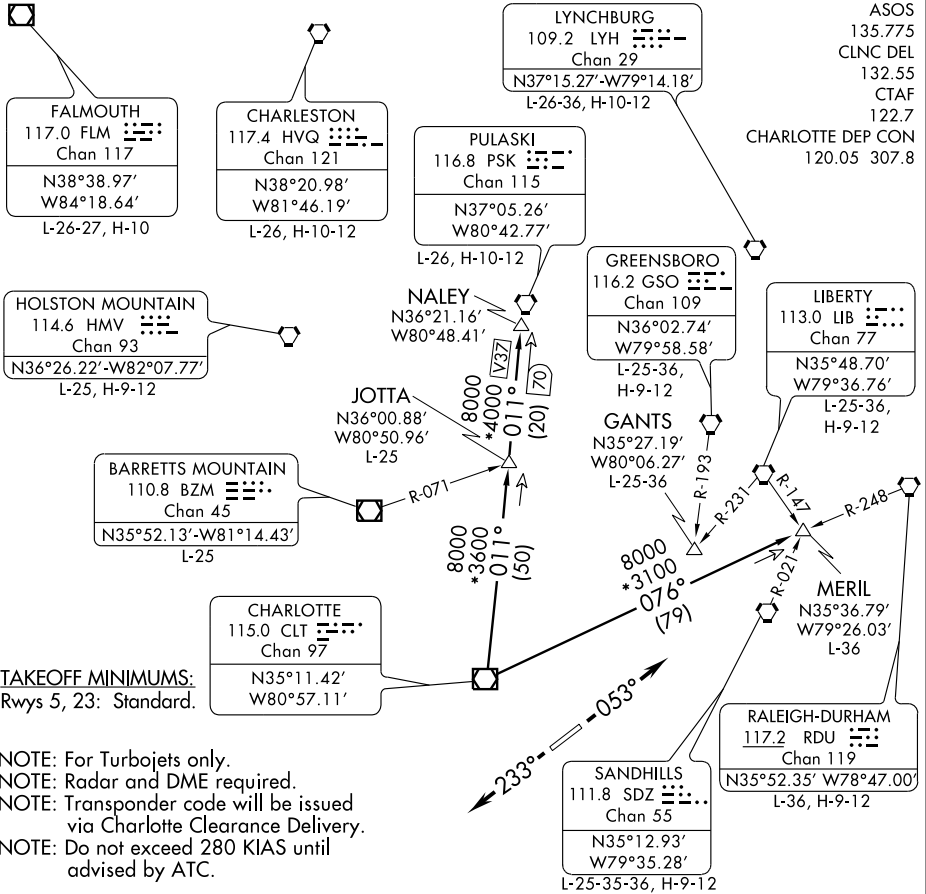
. . . .Expect radar vectors to intercept filed/assigned transition or enroute fix/navaid. Maintain 3000, expect filed altitude/flight level 10 minutes after departure.

DEBIE TRANSITION (BOB5.DEBIE): From over CLT VOR/DME on CLT R-255 to DEBIE.

HARAY TRANSITION (BOB5.HARAY): From over CLT VOR/DME on CLT R-270 to HARAY.

ZAVER TRANSITION (BOB5.ZAVER): From over CLT VOR/DME on CLT R-270 to ZAVER.

HORNET SEVEN DEPARTURE



SE-2, 31 MAY 2012 to 28 JUN 2012

SE-2, 31 MAY 2012 to 28 JUN 2012

TAKEOFF MINIMUMS:
Rwys 5, 23: Standard.

- NOTE: For Turbojets only.
- NOTE: Radar and DME required.
- NOTE: Transponder code will be issued via Charlotte Clearance Delivery.
- NOTE: Do not exceed 280 KIAS until advised by ATC.

TAKEOFF OBSTACLE NOTES:
 Rwy 5: Trees beginning 150' from DER, 202' left of centerline, up to 100' AGL/799' MSL. Vehicles on road and trees beginning 199' from DER, 259' right of centerline, up to 100' AGL/789' MSL.

NOTE: Chart not to scale.

DEPARTURE ROUTE DESCRIPTION

TAKEOFF RUNWAY 5: Climb heading 053°, thence. . .
TAKEOFF RUNWAY 23: Climb heading 233°, thence. . .

. . . Expect radar vectors to intercept filed/assigned transition or enroute fix/navaid.
 Maintain 3000, expect filed altitude/flight level 10 minutes after departure.

- JOTTA TRANSITION (HOR7.JOTTA):** From over CLT VOR/DME on CLT R-011 to JOTTA.
- MERIL TRANSITION (HOR7.MERIL):** From over CLT VOR/DME on CLT R-076 to MERIL.
- NALEY TRANSITION (HOR7.NALEY):** From over CLT VOR/DME on CLT R-011 to NALEY.

HUGO TWO DEPARTURE

ASOS
 135.775
 CLNC DEL
 132.55
 CTAF
 122.7
 CHARLOTTE DEP CON
 120.05 307.8

LYNCHBURG
 109.2 LYH
 Chan 29
 N37°15.27' W79°14.18'
 L-26-36, H-10-12

CHARLESTON
 117.4 HVQ
 Chan 121
 N38°20.98' W81°46.19'
 L-26, H-10-12

HOLSTON MOUNTAIN
 114.6 HMV
 Chan 93
 N36°26.22' W82°07.77'
 L-25, H-9-12

PULASKI
 116.8 PSK
 Chan 115
 N37°05.26' W80°42.77'
 L-26, H-10-12

SUGARLOAF MOUNTAIN
 112.2 SUG
 Chan 59
 N35°24.39' W82°16.12'
 L-25

RALEIGH-DURHAM
 117.2 RDU
 Chan 119
 N35°52.35' W78°47.00'
 L-36, H-9-12

FOOTHILLS
 113.4 ODF
 Chan 81
 N34°41.75' W83°17.86'
 L-25, H-9-12

ROBAY
 N36°03.77' W81°18.07'

CHARLOTTE
 115.0 CLT
 Chan 97
 N35°11.42' W80°57.11'

GIPPR
 N35°12.58' W79° 59.13'
 L-25-36

PITTY
 N35°19.82' W81°51.09'

GREENWOOD
 115.5 GRD
 Chan 102
 N34°15.09' W82°09.25'
 L-24, H-9-12

DEBIE
 N34°55.82' W81°48.53'

SANDHILLS
 111.8 SDZ
 Chan 55
 N35°12.93' W79°35.28'
 L-25-35-36, H-9-12

ELECTRIC CITY
 108.6 ELW
 Chan 23
 N34°25.15' W82°47.08'
 L-18

ANDYS
 N34°22.25' W81°08.63'

CHOPN
 N34°14.90' W80°32.35'

CHESTERFIELD
 108.2 CTF
 Chan 19
 N34°39.03' W80°16.50'
 L-24-25-36

COLLIERS
 113.9 IRQ
 Chan 86
 N33°42.44' W82°09.72'
 L-24, H-9-12

COLUMBIA
 114.7 CAE
 Chan 94
 N33°51.43' W81°03.23'
 L-24, H-9-12

SAVANNAH
 115.95 SAV
 Chan 106 (Y)
 N32°08.78' W81°11.95'
 L-24, H-9-12

TAKEOFF MINIMUMS
 Rwy 5, 23: Standard.

NOTE: For propeller aircraft only.
 NOTE: Radar and DME required.
 NOTE: Transponder code will be issued via Charlotte Clearance Delivery.
 NOTE: Turboprops: Operate in a manner that will result in best forward speed and climb rate.

(NARRATIVE ON FOLLOWING PAGE)

NOTE: Chart not to scale.

HUGO TWO DEPARTURE

SE-2, 31 MAY 2012 to 28 JUN 2012

SE-2, 31 MAY 2012 to 28 JUN 2012



DEPARTURE ROUTE DESCRIPTION

TAKEOFF RUNWAY 5: Climb heading 053°, thence. . . .

TAKEOFF RUNWAY 23: Climb heading 233°, thence. . . .

. . . .Expect radar vectors to intercept filed/assigned transition or enroute fix/navaid.
Maintain 3000, expect filed altitude/flight level 10 minutes after departure.

ANDYS TRANSITION (HUG2.ANDYS): From over CLT VOR/DME on CLT R-196 to ANDYS.

CHOPN TRANSITION (HUG2.CHOPN): From over CLT VOR/DME on CLT R-165 to CHOPN.

DEBIE TRANSITION (HUG2.DEBIE): From over CLT VOR/DME on CLT R-255 to DEBIE.

GIPPR TRANSITION (HUG2.GIPPR): From over CLT VOR/DME on CLT R-093 to GIPPR.

PITTY TRANSITION (HUG2.PITTY): From over CLT VOR/DME on CLT R-286 to PITTY.

ROBAY TRANSITION (HUG2.ROBAY): From over CLT VOR/DME on CLT R-347 to ROBAY.

SADIE TRANSITION (HUG2.SADIE): From over CLT VOR/DME on CLT R-347 to SADIE.

TAKEOFF OBSTACLE NOTES

Rwy 5: Trees beginning 150' from DER, 202' left of centerline, up to 100' AGL/799' MSL.
Vehicles on road and trees beginning 199' from DER, 259' right of centerline, up to 100' AGL/789' MSL.

SE-2, 31 MAY 2012 to 28 JUN 2012

SE-2, 31 MAY 2012 to 28 JUN 2012

PANTHER TWO DEPARTURE

CHARLOTTE-MONROE EXECUTIVE (E.Q.Y)
SL-5726 (FAA) MONROE, NORTH CAROLINA

ASOS
135.775
CLNC DEL
132.55
CTAF
122.7
CHARLOTTE DEP CON
120.05 307.8

CHARLOTTE
115.0 CLT
Chan 97
N35°11.42' W80°57.11'

SANDHILLS
111.8 SDZ
Chan 55
N35°12.93' W79°35.28'
L-25-35-36,
H-9-12

LILLS
N34°56.13'
W79°55.81'
L-25-35-36

FAYETTEVILLE
108.8 FAY
Chan 25
N34°59.13' W78°52.50'
L-35-36

FLORENCE
115.2 FLO
Chan 99
N34°13.98'
W79°39.43'
L-24-35-36
H-9-12

COLUMBIA
114.7 CAE
Chan 94
N33°51.43' W81°03.23'
L-24, H-9-12

COLLIERS
113.9 IRQ
Chan 86
N33°42.44' W82°09.72'
L-24, H-9-12

ANDYS
N34°22.25'
W81°08.63'

BUCKL
N34°31.50'
W80°52.89'

DUNKN
N31°58.70'
W81°57.93'
H-9-12

SAVANNAH
115.95 SAV
Chan 106 (Y)
N32°08.78' W81°11.95'
L-24, H-9-12

TAYLOR
112.9 TAY
Chan 76
N30°30.28'
W82°33.17'
L-21-24, H-8-12

CRAIG
114.5 CRG
Chan 92
N30°20.33' W81°30.60'
L-21-23-24, H-8

SE-2, 31 MAY 2012 to 28 JUN 2012

SE-2, 31 MAY 2012 to 28 JUN 2012

NOTE: For Turbojets only.
NOTE: Radar and DME required.
NOTE: Transponder code will be issued via Charlotte Clearance Delivery.
NOTE: Do not exceed 280 KIAS until advised by ATC.

TAKEOFF MINIMUMS:
Rwys 5, 23: Standard.

NOTE: Chart not to scale.

(NARRATIVE ON FOLLOWING PAGE)

PANTHER TWO DEPARTURE

MONROE, NORTH CAROLINA
CHARLOTTE-MONROE EXECUTIVE (E.Q.Y)



DEPARTURE ROUTE DESCRIPTION

TAKEOFF RUNWAY 5: Climb heading 053°, thence. . . .

TAKEOFF RUNWAY 23: Climb heading 233°, thence. . . .

. . . .Expect radar vectors to intercept filed/assigned transition or enroute fix/navaid. Maintain 3000, expect filed altitude/flight level 10 minutes after departure.

ANDYS TRANSITION (PAN2.ANDYS): From over CLT VOR/DME on CLT R-196 to ANDYS.

COLUMBIA TRANSITION (PAN2.CAE): From over CLT VOR/DME on CLT R-180 to BUCKL, then on CAE R-014 to CAE VORTAC.

LILLS TRANSITION (PAN2.LILLS): From over CLT VOR/DME on CLT R-112 to LILLS.

TAYLOR TRANSITION (PAN2.TAY): From over CLT VOR/DME on CLT R-196 to TREAL, then on CAE R-205 to DUNKN, then on TAY R-022 to TAY VORTAC.

TAKEOFF OBSTACLE NOTES:

Rwy 5: Trees beginning 150' from DER, 202' left of centerline, up to 100' AGL/799' MSL.
Vehicles on road and trees beginning 199' from DER, 259' right of centerline, up to 100' AGL/789' MSL.

SE-2, 31 MAY 2012 to 28 JUN 2012

SE-2, 31 MAY 2012 to 28 JUN 2012