

WAAS CH 99302 W01A	APP CRS 010°	Rwy Idg THRE 1255 Apt Elev 1255	5001
--	------------------------	---	-------------

RNAV (GPS) RWY 1

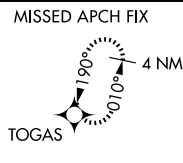
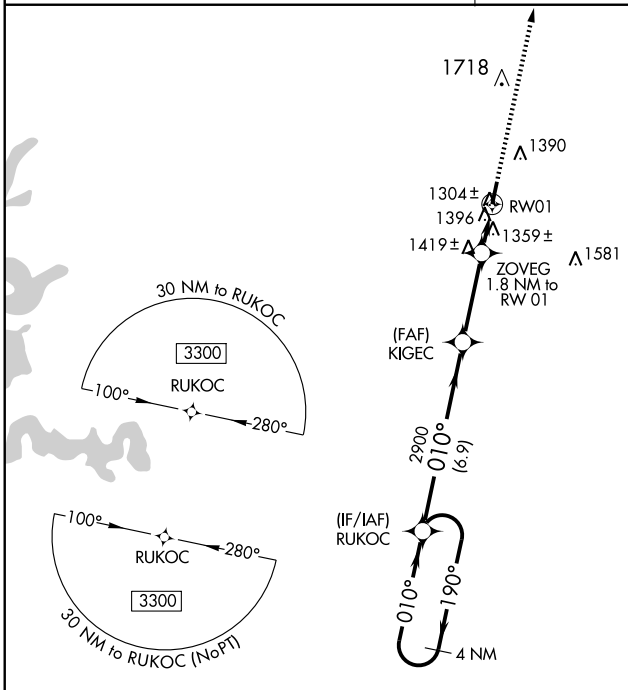
NEOSHO HUGH ROBINSON (E/O S)

⚠ Baro-VNAV NA when using Joplin altimeter setting. For uncompensated Baro-VNAV systems, LNAV/VNAV NA below -17°C (2°F) or above 54°C (130°F). DME/DME RNP-0.3 NA. Visibility reduction by helicopters NA. When local altimeter setting not received, use Joplin altimeter setting and increase all DA 87 feet and all MDA 100 feet; increase LPV all Cats visibility 1/8 mile. LNAV/VNAV all Cats visibility 3/8 mile, and LNAV Cat C visibility 1/4 mile. When VGSI inop, Straight-in/Circling to Rwy 1 NA at night.

MISSED APPROACH:
Climb to 3200 direct TOGAS and hold.

KANSAS CITY CENTER
128.6 282.325

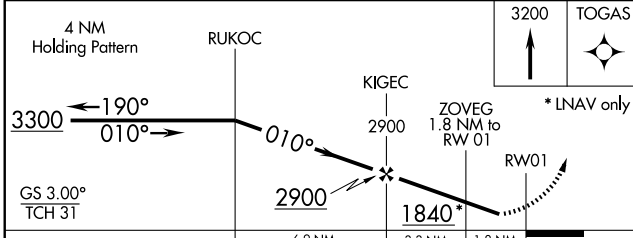
UNICOM
122.8 (CTAF)



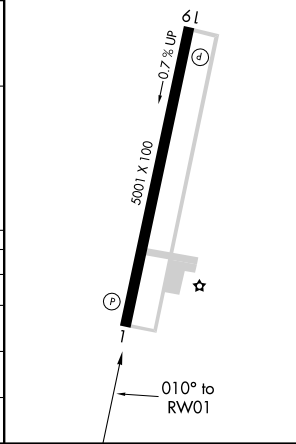
NC-3, 31 MAY 2012 to 28 JUN 2012

NC-3, 31 MAY 2012 to 28 JUN 2012

ELEV 1255	THRE 1255
REIL Rwys 1 and 19	
MIRL Rwy 1-19	



CATEGORY	A	B	C	D
LPV DA	1505-1	250 (300-1)		NA
LNAV/VNAV DA	1658-1 3/8	403 (500-1 3/8)		NA
LNAV MDA	1680-1	425 (500-1)	1680-1 1/4 425 (500-1 1/4)	NA
CIRCLING	1720-1	465 (500-1)	1740-1 1/2 485 (500-1 1/2)	NA



WAAS CH 56522 W19A	APP CRS 190°	Rwy Idg THRE Apt Elev 1219 1255	5001
--	------------------------	--	-------------

RNAV (GPS) RWY 19

NEOSHO HUGH ROBINSON (E/O S)

⚠ When VGSI inop, Circling Rwy 1 NA at night. For uncompensated Baro-VNAV systems, LNAV/VNAV NA below -17°C (2°F) or above 54°C (130°F). DME/DME RNP-0.3 NA. Visibility reduction by helicopters NA. When local altimeter setting not received, use Joplin altimeter setting and increase all DA 87 feet and all MDA 100 feet; increase LPV all Cats visibility 1/8 mile, LNAV/VNAV all Cats visibility 3/8 mile, and LNAV Cat C visibility 1/4 mile. VDP and Baro-VNAV NA when using Joplin altimeter setting.

MISSED APPROACH:
Climb to 3300 direct RUKOC and hold.

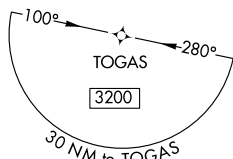
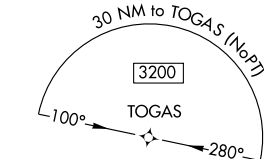
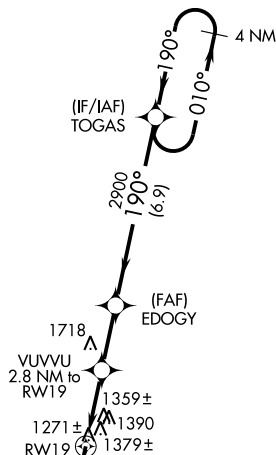
KANSAS CITY CENTER
128.6 282.325

UNICOM
122.8 (CTAF)

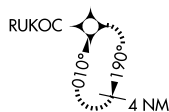
NC-3, 31 MAY 2012 to 28 JUN 2012

NC-3, 31 MAY 2012 to 28 JUN 2012

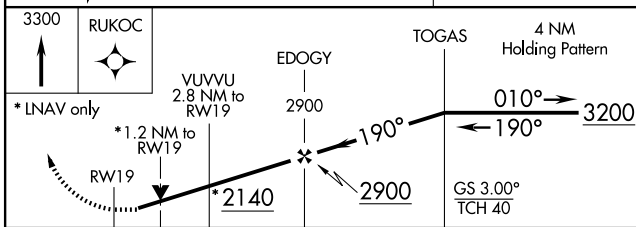
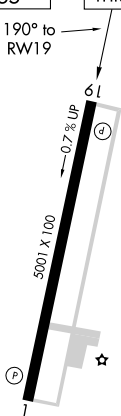
△ 2056



MISSED APCH FIX



ELEV 1255	THRE 1219
-----------	-----------



CATEGORY	A	B	C	D
LPV DA	1469-1	250 (300-1)		NA
LNAV/VNAV DA	1666-1½	447 (500-1½)		NA
LNAV MDA	1640-1	421 (400-1)	1640-1¼ 421 (400-1¼)	NA
CIRCLING	1720-1	465 (500-1)	1740-1½ 485 (500-1½)	NA

REIL Rwy 1 and 19
MIRL Rwy 1-19

NEOSHO, MISSOURI

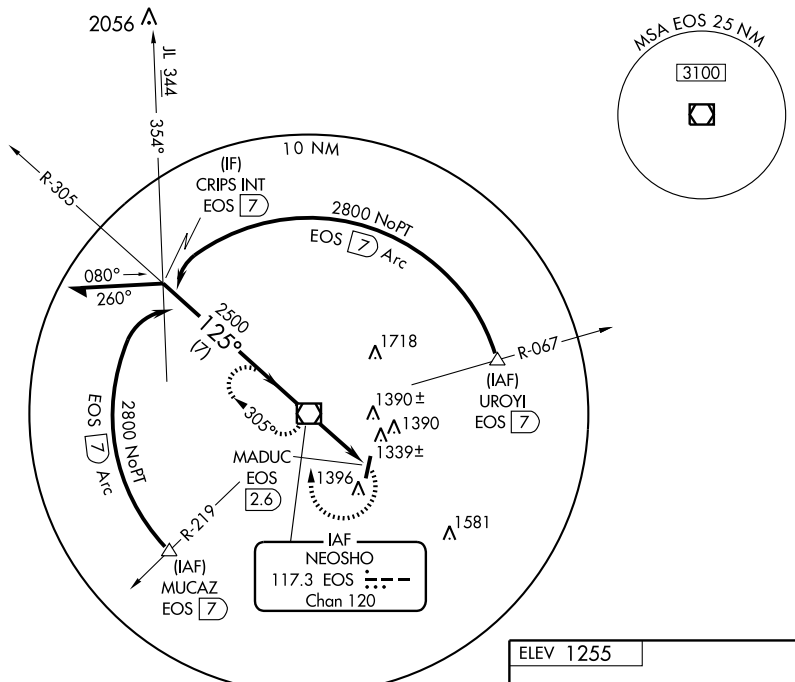
AL-5610 (FAA)

VOR/DME EOS 117.3 Chan 120	APP CRS 125°	Rwy Idg TDZE Apt Elev 1255	N/A N/A 1255
--	------------------------	--	---

VOR-A
NEOSHO HUGH ROBINSON (EOS)

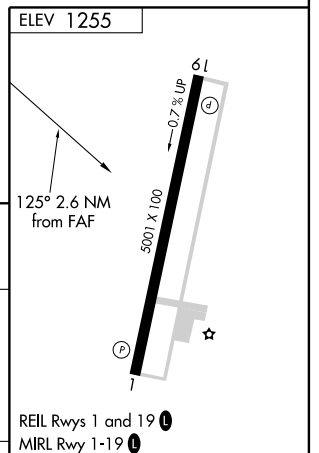
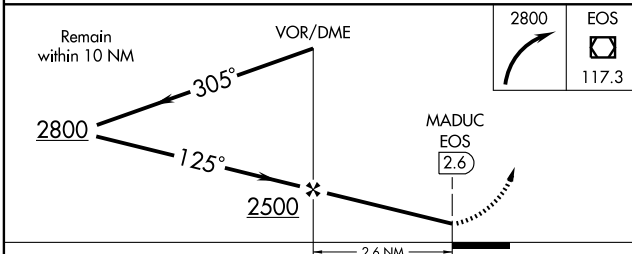
NA When local altimeter setting not received, use Joplin altimeter setting and increase all MDA 20 feet. MISSED APPROACH: Climbing right turn to 2800 direct EOS VOR/DME and hold.

KANSAS CITY CENTER **128.6 282.325** UNICOM **122.8 (CTAF)**



NC-3, 31 MAY 2012 to 28 JUN 2012

NC-3, 31 MAY 2012 to 28 JUN 2012



CATEGORY	A	B	C	D	FAF to MAP 2.6 NM					
CIRCLING	1780-1	525 (600-1)	1820-1½ 565 (600-1½)	NA	Knots	60	90	120	150	180
					Min:Sec	2:36	1:44	1:18	1:02	0:52

NEOSHO, MISSOURI
Amdt 7A 10154

36°49'N-94°24'W

NEOSHO HUGH ROBINSON (EOS)
VOR-A