

WAAS CH 99302 W01A	APP CRS 010°	Rwy Idg THRE 1255 Apt Elev 1255	5001
--	------------------------	---	-------------

RNAV (GPS) RWY 1

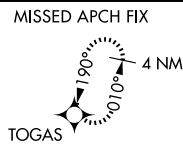
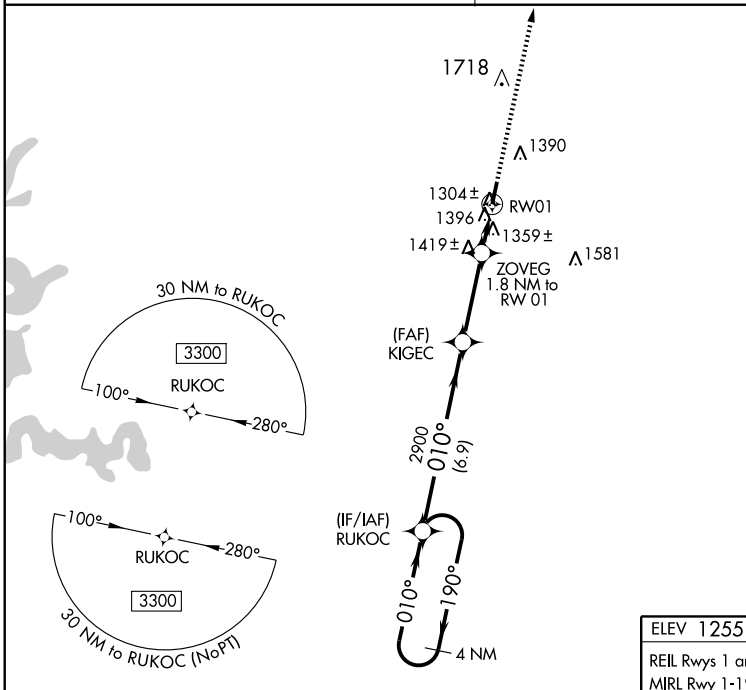
NEOSHO HUGH ROBINSON (E/O S)

⚠ Baro-VNAV NA when using Joplin altimeter setting. For uncompensated Baro-VNAV systems, LNAV/VNAV NA below -17°C (2°F) or above 54°C (130°F). DME/DME RNP-0.3 NA. Visibility reduction by helicopters NA. When local altimeter setting not received, use Joplin altimeter setting and increase all DA 87 feet and all MDA 100 feet; increase LPV all Cats visibility 1/8 mile. LNAV/VNAV all Cats visibility 3/8 mile, and LNAV Cat C visibility 1/4 mile. When VGSI inop, Straight-in/Circling to Rwy 1 NA at night.

MISSED APPROACH:
Climb to 3200 direct TOGAS and hold.

KANSAS CITY CENTER
128.6 282.325

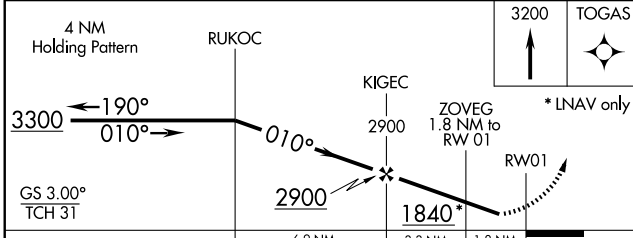
UNICOM
122.8 (CTAF)



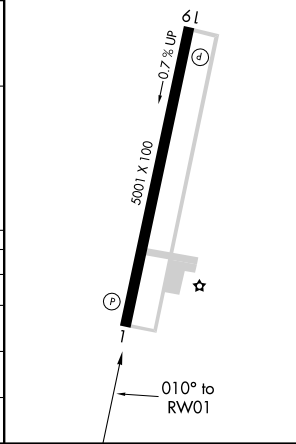
NC-3, 31 MAY 2012 to 28 JUN 2012

NC-3, 31 MAY 2012 to 28 JUN 2012

ELEV 1255	THRE 1255
REIL Rwys 1 and 19	
MIRL Rwy 1-19	



CATEGORY	A	B	C	D
LPV DA	1505-1 250 (300-1)			NA
LNAV/VNAV DA	1658-1 3/8 403 (500-1 3/8)			NA
LNAV MDA	1680-1	425 (500-1)	1680-1 1/4 425 (500-1 1/4)	NA
CIRCLING	1720-1	465 (500-1)	1740-1 1/2 485 (500-1 1/2)	NA



WAAS CH 56522 W19A	APP CRS 190°	Rwy Idg THRE Apt Elev	5001 1219 1255
---------------------------------	------------------------	-----------------------------	---

RNAV (GPS) RWY 19

NEOSHO HUGH ROBINSON (E/O S)

⚠ When VGSI inop, Circling Rwy 1 NA at night. For uncompensated Baro-VNAV systems, LNAV/VNAV NA below -17°C (2°F) or above 54°C (130°F). DME/DME RNP-0.3 NA. Visibility reduction by helicopters NA. When local altimeter setting not received, use Joplin altimeter setting and increase all DA 87 feet and all MDA 100 feet; increase LPV all Cats visibility 1/8 mile, LNAV/VNAV all Cats visibility 3/8 mile, and LNAV Cat C visibility 1/4 mile. VDP and Baro-VNAV NA when using Joplin altimeter setting.

MISSED APPROACH:
Climb to 3300 direct RUKOC and hold.

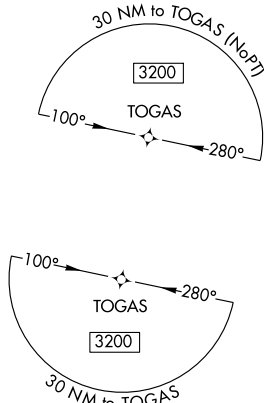
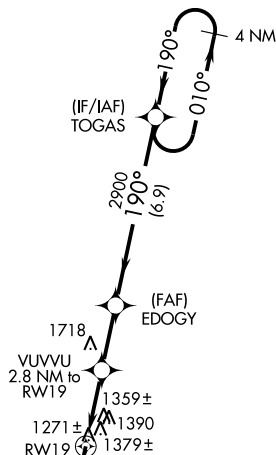
KANSAS CITY CENTER
128.6 282.325

UNICOM
122.8 (CTAF)

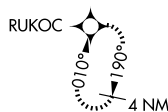
NC-3, 31 MAY 2012 to 28 JUN 2012

NC-3, 31 MAY 2012 to 28 JUN 2012

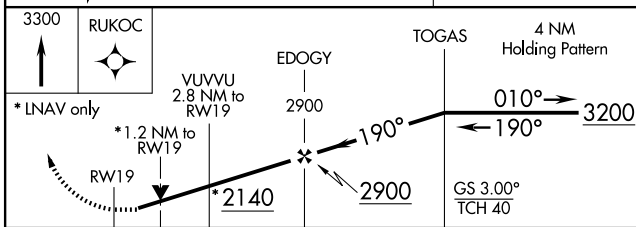
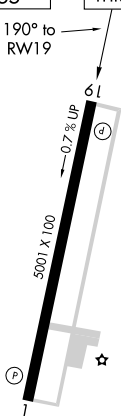
△ 2056



MISSED APCH FIX



ELEV 1255	THRE 1219
-----------	-----------



CATEGORY	A	B	C	D
LPV DA	1469-1 250 (300-1)			NA
LNAV/VNAV DA	1666-1½ 447 (500-1½)			NA
LNAV MDA	1640-1	421 (400-1)	1640-1¼ 421 (400-1¼)	NA
CIRCLING	1720-1	465 (500-1)	1740-1½ 485 (500-1½)	NA

REIL Rwy 1 and 19
MIRL Rwy 1-19

NEOSHO, MISSOURI

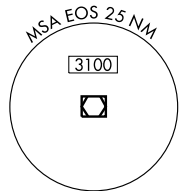
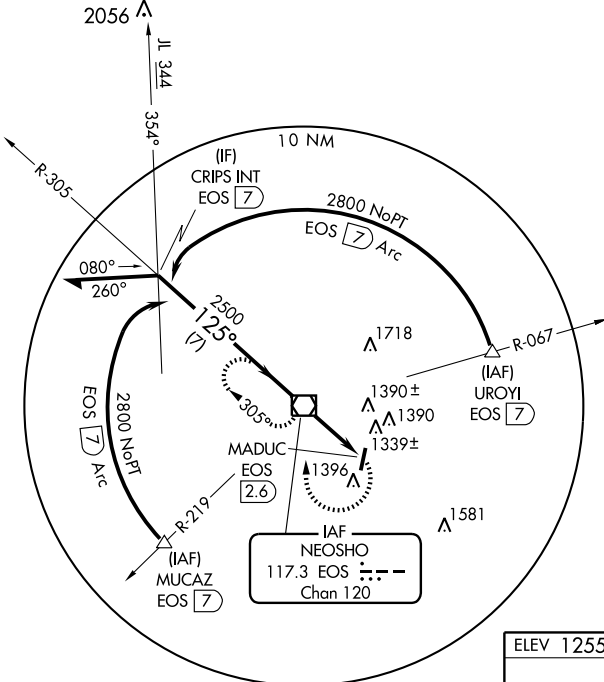
AL-5610 (FAA)

VOR/DME EOS 117.3 Chan 120	APP CRS 125°	Rwy Idg TDZE Apt Elev 1255	N/A N/A 1255
--	------------------------	--	---

VOR-A
NEOSHO HUGH ROBINSON (EOS)

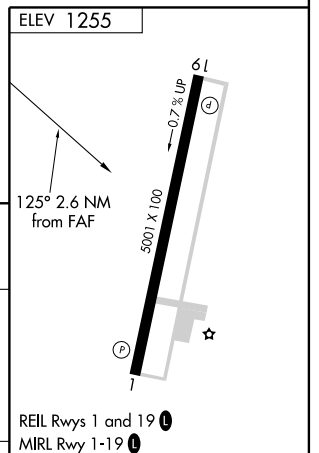
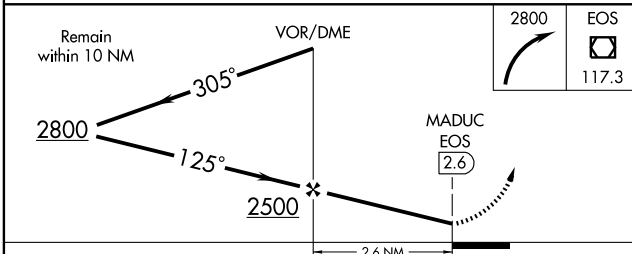
NA When local altimeter setting not received, use Joplin altimeter setting and increase all MDA 20 feet. MISSED APPROACH: Climbing right turn to 2800 direct EOS VOR/DME and hold.

KANSAS CITY CENTER **128.6 282.325** UNICOM **122.8 (CTAF)**



NC-3, 31 MAY 2012 to 28 JUN 2012

NC-3, 31 MAY 2012 to 28 JUN 2012



CATEGORY	A	B	C	D	FAF to MAP 2.6 NM					
CIRCLING	1780-1	525 (600-1)	1820-1½ 565 (600-1½)	NA	Knots	60	90	120	150	180
					Min:Sec	2:36	1:44	1:18	1:02	0:52

NEOSHO, MISSOURI
Amdt 7A 10154

36°49'N-94°24'W

NEOSHO HUGH ROBINSON (EOS)
VOR-A

INSTRUMENT APPROACH PROCEDURE CHARTS

 **IFR ALTERNATE AIRPORT MINIMUMS**

Standard alternate minimums for non precision approaches are 800-2 (NDB, VOR, LOC, TACAN, LDA, VORTAC, VOR/DME, ASR or WAAS LNAV); for precision approaches 600-2 (ILS or PAR). Airports within this geographical area that require alternate minimums other than standard or alternate minimums with restrictions are listed below. NA - means alternate minimums are not authorized due to unmonitored facility or absence of weather reporting service. Civil pilots see FAR 91. IFR Alternate Airport Minimums: Ceiling and Visibility Minimums not applicable to USA/USN/USAF. Pilots must review the IFR Alternate Airport Minimums Notes for alternate airfield suitability.

NAME ALTERNATE MINIMUMS

ALGONA, IA

ALGONA MUNI (AXA) **NDB Rwy 12**
RNAV (GPS) Rwy 12
RNAV (GPS) Rwy 30
VOR/DME-A

NA when local weather not available.

AMES, IA

AMES MUNI (AMW) **RNAV (GPS) Rwy 1**
RNAV (GPS) Rwy 13
RNAV (GPS) Rwy 19
RNAV (GPS) Rwy 31

NA when local weather not available.

ANKENY, IA

ANKENY RGNL (IKV) **RNAV (GPS) Rwy 18**
RNAV (GPS) Rwy 22
RNAV (GPS) Rwy 36

NA when local weather not available.

ATLANTIC, IA

ATLANTIC MUNI (AIO) **RNAV (GPS) Rwy 2**
RNAV (GPS) Rwy 20

NA when local weather not available.

BRANSON, MO

BRANSON (BBG) **RNAV (GPS) Rwy 14¹**
RNAV (GPS) Rwy 32²

NA when local weather not available.

¹Category C, 800-2¼; Category D, 800-2½.

²Category D, 800-2¼.

M. GRAHAM CLARK

DOWNTOWN (PLK) **RNAV (GPS) Rwy 12**
RNAV (GPS) Rwy 30

NA when local weather not available.

NAME ALTERNATE MINIMUMS

BRANSON WEST, MO

BRANSON WEST MUNI - EMERSON
FIELD (FWB) **RNAV (GPS) Rwy 3**
RNAV (GPS) Rwy 21

NA when local weather not available.

BURLINGTON, IA

SOUTHEAST IOWA
RGNL (BRL) **ILS or LOC Rwy 36¹**
RNAV (GPS) Rwy 12
RNAV (GPS) Rwy 30
RNAV (GPS) Rwy 36
VOR/DME Rwy 12
VOR Rwy 30

NA when local weather not available.

¹ILS, LOC, Category D, 800-2¼.

CAPE GIRARDEAU, MO

CAPE GIRARDEAU
RGNL (CGI) **ILS or LOC Rwy 10¹²**
LOC/DME BC Rwy 28¹
RNAV (GPS) Rwy 10¹
RNAV (GPS) Rwy 28¹³

¹NA when local weather not available.

²ILS, LOC, Categories A, B, 1000-2; Categories C, D, 1000-3.

³Categories A,B,C,D, 900-2¼.

CEDAR RAPIDS, IA

THE EASTERN
IOWA (CID) **ILS or LOC Rwy 9¹**
ILS or LOC Rwy 27²
RNAV (GPS) Rwy 9
RNAV (GPS) Rwy 27
VOR Rwy 27
VOR/DME Rwy 9

NA when local weather not available.

¹NA when control tower closed.

²ILS, NA when control tower closed.



ALTERNATE MINS

M2



NAME ALTERNATE MINIMUMS

CENTERVILLE, IA

CENTERVILLE
MUNI (TVK) RNAV (GPS) Rwy 16
RNAV (GPS) Rwy 34

NA when local weather not available.

CHARITON, IA

CHARITON
MUNI (CNC) RNAV (GPS) Rwy 10
RNAV (GPS) Rwy 17

NA when local weather not available.

CHARLES CITY, IA

NORTHEAST
IOWA RGNL (CCY) LOC Rwy 12
NDB Rwy 12
RNAV (GPS) Rwy 12
RNAV (GPS) Rwy 30

NA when local weather not available.

CHEROKEE, IA

CHEROKEE COUNTY
RGNL (CKP) RNAV (GPS) Y Rwy 36
RNAV (GPS) Z Rwy 36¹

NA when local weather not available.

¹Categories A, B, 800-2 $\frac{1}{4}$.

CLARINDA, IA

SCHENCK FIELD (ICL) NDB-A¹
RNAV (GPS) Rwy 2
RNAV (GPS) Rwy 20

NA when local weather not available.

¹Categories A, B, 900-2.

CLARION, IA

CLARION MUNI (CAV) NDB Rwy 14
RNAV (GPS) Rwy 14
RNAV (GPS) Rwy 32

NA when local weather not available.

CLINTON, IA

CLINTON MUNI (CWI) ILS or LOC Rwy 3
RNAV (GPS) Rwy 3
RNAV (GPS) Rwy 14
RNAV (GPS) Rwy 21
RNAV (GPS) Rwy 32
VOR Rwy 3

NA when local weather not available.

COLUMBIA, MO

COLUMBIA
RGNL (COU) ILS or LOC/DME Rwy 2¹
LOC/DME BC Rwy 20¹
VOR Rwy 13²

¹NA when local weather not available.

²Categories A,B, 1000-2; Categories C,D, 1000-3.

NAME ALTERNATE MINIMUMS

COUNCIL BLUFFS, IA

COUNCIL BLUFFS
MUNI (CBF) ILS or LOC Rwy 36
RNAV (GPS) Rwy 14
RNAV (GPS) Rwy 18
RNAV (GPS) Rwy 36
VOR-A

NA when local weather not available.

CRESTON, IA

CRESTON MUNI (CSQ) ... RNAV (GPS) Rwy 16
RNAV (GPS) Rwy 34

NA when local weather not available.

DAVENPORT, IA

DAVENPORT
MUNI (DVN) ILS or LOC Rwy 15
RNAV (GPS) Rwy 3
RNAV (GPS) Rwy 15
RNAV (GPS) Rwy 21
RNAV (GPS) Rwy 33
VOR Rwy 3
VOR Rwy 21

NA when local weather not available.

DECORAH, IA

DECORAH MUNI (DEH) ... RNAV (GPS) Rwy 11
RNAV (GPS) Rwy 29
VOR Rwy 29

NA when local weather not available.

DES MOINES, IA

DES MOINES
INTL (DSM) ILS or LOC Rwy 5¹
ILS or LOC Rwy 13¹
ILS or LOC Rwy 31¹
RNAV (GPS) Rwy 5²
RNAV (GPS) Rwy 13²
RNAV (GPS) Rwy 31²
VOR/DME Rwy 23³

¹Category E, 900-2 $\frac{1}{4}$.

²NA when local weather not available.

³Category C, 800-2 $\frac{1}{4}$; Category D, 800-2 $\frac{1}{4}$.

DUBUQUE, IA

DUBUQUE
RGNL (DBQ) RNAV (GPS) Rwy 13
RNAV (GPS) Rwy 31
RNAV (GPS) Rwy 36
VOR Rwy 13¹
VOR Rwy 31¹
VOR Rwy 36

NA when local weather not available.

¹Category D, 800-2 $\frac{1}{4}$.

31 MAY 2012 to 28 JUN 2012

31 MAY 2012 to 28 JUN 2012



ALTERNATE MINS

M2





ALTERNATE MINS

M4



NAME ALTERNATE MINIMUMS

KANSAS CITY, MO

CHARLES B. WHEELER

DOWNTOWN (MKC) ILS or LOC Rwy 3¹

ILS or LOC Rwy 19²

NDB Rwy 19³

RNAV (GPS) Rwy 3

RNAV (GPS) Rwy 19⁴

RNAV (GPS) Rwy 21

VOR Rwy 19

VOR Rwy 21⁵

NA when local weather not available.

¹ILS, LOC, Categories A, B, 900-2; Category C, 900-2½.

²ILS, Categories A, B, 800-2; Category C, 800-2½; Category D, 800-2½. LOC, Category C, 800-2½; Category D, 800-2½.

³Category D, 800-2½.

⁴Category D, 900-3.

⁵Categories A, B, 900-2; Category C, 900-2½; Category D, 900-2½.

KEOKUK, IA

KEOKUK MUNI (EOK) NDB Rwy 14

NDB Rwy 26

RNAV (GPS) Rwy 8

RNAV (GPS) Rwy 14

RNAV (GPS) Rwy 26

RNAV (GPS) Rwy 32

NA when local weather not available.

KIRKSVILLE, MO

KIRKSVILLE

RGNL (IRK) ILS or LOC/DME Rwy 36

RNAV (GPS) Rwy 18

RNAV (GPS) Rwy 36

VOR-A

VOR/DME-B

NA when local weather not available.

KNOXVILLE, IA

KNOXVILLE

MUNI (OXV) RNAV (GPS) Rwy 15

RNAV (GPS) Rwy 33

NA when local weather not available.

LE MARS, IA

LE MARS MUNI (LRJ) RNAV (GPS) Rwy 18

RNAV (GPS) Rwy 36

VOR/DME Rwy 36¹

NA when local weather not available.

¹Categories A,B, 900-2.

NAME ALTERNATE MINIMUMS

LEE'S SUMMIT, MO

LEE'S SUMMIT

MUNI (LXT) RNAV (GPS) Rwy 11

RNAV (GPS) Rwy 18

RNAV (GPS) Rwy 29

RNAV (GPS) Rwy 36

NA when local weather not available.

MARSHALLTOWN, IA

MARSHALLTOWN

MUNI (MIW) RNAV (GPS) Rwy 13

RNAV (GPS) Rwy 31

VOR Rwy 13

VOR Rwy 31

NA when local weather not available.

MASON CITY, IA

MASON CITY

MUNI (MCW) RNAV (GPS) Rwy 18

RNAV (GPS) Rwy 30

RNAV (GPS) Rwy 36

NA when local weather not available.

MONETT, MO

MONETT MUNI (HFJ) RNAV (GPS) Rwy 18

RNAV (GPS) Rwy 36

NA when local weather not available.

MONTICELLO, IA

MONTICELLO

RGNL (MXO) RNAV (GPS) Rwy 15

RNAV (GPS) Rwy 33

NA when local weather not available.

MOUNT PLEASANT, IA

MOUNT PLEASANT

MUNI (MPZ) NDB Rwy 33¹

RNAV (GPS) Rwy 15

RNAV (GPS) Rwy 33

NA when local weather not available.

¹Category C, 800-2½.

MUSCATINE, IA

MUSCATINE

MUNI (MUT) ILS or LOC Rwy 24¹

RNAV (GPS) Rwy 6^{2a}

RNAV (GPS) Rwy 24²

VOR Rwy 6⁴

¹ILS, Categories B,C,D, 700-2.

²NA when local weather not available.

³Categories A, B, C, D, 800-2½.

⁴Category C, 800-2½; Category D, 800-2½.

NEOSHO, MO

NEOSHO HUGH

ROBINSON (EOS) RNAV (GPS) Rwy 1

RNAV (GPS) Rwy 19

NA when local weather not available.

31 MAY 2012 to 28 JUN 2012

31 MAY 2012 to 28 JUN 2012



ALTERNATE MINS

NC-3



M4



ALTERNATE MINS

M5



NAME ALTERNATE MINIMUMS

NEWTON, IA

NEWTON MUNI (TNU) RNAV (GPS) Rwy 14
RNAV (GPS) Rwy 32

NA when local weather not available.

OSCEOLA, IA

OSCEOLA
MUNI (I75) RNAV (GPS) Rwy 18
RNAV (GPS) Rwy 36

NA when local weather not available.

OSKALOOSA, IA

OSKALOOSA
MUNI (OOA) RNAV (GPS) Rwy 13
RNAV (GPS) Rwy 31

NA when local weather not available.

OTTUMWA, IA

OTTUMWA
RGNL (OTM) RNAV (GPS) Rwy 13
RNAV (GPS) Rwy 31
VOR/DME Rwy 13
VOR Rwy 31

NA when local weather not available.

PELLA, IA

PELLA MUNI (PEA) RNAV (GPS) Rwy 16
RNAV (GPS) Rwy 34

NA when local weather not available.

PERRY, IA

PERRY MUNI (PRO) RNAV (GPS) Rwy 14
RNAV (GPS) Rwy 32

NA when local weather not available.

POPLAR BLUFF, MO

POPLAR BLUFF
MUNI (POF) RNAV (GPS) Rwy 18¹
RNAV (GPS) Rwy 36¹
SDF Rwy 36²

¹NA when local weather not available.

²NA except for operators with approved weather reporting service.

RED OAK, IA

RED OAK MUNI (RDK) RNAV (GPS) Rwy 5
RNAV (GPS) Rwy 17

NA when local weather not available.

ROLLA-VICHY, MO

ROLLA NATIONAL (VIH) RNAV (GPS) Rwy 4
RNAV (GPS) Rwy 22
VOR Rwy 22
VOR/DME Rwy 4

NA when local weather not available.

NAME ALTERNATE MINIMUMS

ST. CHARLES, MO

ST CHARLES COUNTY
SMARTT (SET) RNAV (GPS) Rwy 18
VOR Rwy 18

NA when local weather not available.

ST. JOSEPH, MO

ROSECRANS
MEMORIAL (STJ) ILS or LOC Rwy 35¹²
LOC BC Rwy 17¹³
RADAR-1⁴
RNAV (GPS) Rwy 35⁵⁶
VOR or TACAN Rwy 17⁵

¹NA when control tower closed.

²ILS, Category D, 700-2¼; Category E, 1000-3.

LOC, Category D, 800-2¼; Category E, 1000-3.

³Category D, 800-2¼.

⁴PAR, Category D, 700-2¼; Category E, 1000-3. ASR Category D, 800-2¼; Category E, 1000-3.

⁵Category D, 800-2¼; Category E, 1000-3.

⁶NA when local weather not available.

ST. LOUIS, MO

LAMBERT-ST. LOUIS
INTL (STL) RNAV (GPS) Rwy 11
Category E, 800-2.

SPIRIT OF

ST. LOUIS (SUS) ILS or LOC Rwy 8R¹³
ILS or LOC Rwy 26L²⁴
RNAV (GPS) Rwy 8L¹
RNAV (GPS) Rwy 8R¹⁵
RNAV (GPS) Rwy 26L¹⁵
RNAV (GPS) Rwy 26R¹

¹NA when local weather not available.

²NA when control tower closed.

³ILS, Categories A,B,C, 700-2; Category D, 700-2¼. LOC, NA.

⁴ILS, Categories A,B,C, 700-2; Category D, 700-2¼. LOC, Category D, 800-2¼.

⁵Category D, 800-2¼.

SHELDON, IA

SHELDON
MUNI (SHL) NDB Rwy 4
RNAV (GPS) Rwy 4
RNAV (GPS) Rwy 15
RNAV (GPS) Rwy 33

NA when local weather not available.

31 MAY 2012 to 28 JUN 2012

31 MAY 2012 to 28 JUN 2012



ALTERNATE MINS

M5



NC-3

12152



ALTERNATE MINS

M6



NAME ALTERNATE MINIMUMS

SHENANDOAH, IA

SHENANDOAH
MUNI (SDA) **RNAV (GPS) Rwy 4**
NDB Rwy 4
VOR/DME Rwy 12

NA when local weather not available.

SIoux CITY, IA

SIoux GATEWAY/COLONEL BUD DAY
FIELD (SUX) **ILS or LOC Rwy 13¹²⁶**
ILS or LOC Rwy 31¹²³
NDB Rwy 35⁴
RNAV (GPS) Rwy 13²⁵
RNAV (GPS) Rwy 17²
RNAV (GPS) Rwy 31²⁵
VOR/DME or TACAN Rwy 13²⁵
VOR or TACAN Rwy 31²⁵

¹NA when control tower closed.

²NA when local weather not available.

³ILS, LOC, Category E, 1000-3.

⁴Categories A,B, 900-2; Category C, 900-2½;
Category D, 900-2½.

⁵Category E, 1000-3.

⁶ILS, Category D, 700-2; Category E, 1000-3;
LOC, Category E, 1000-3.

SPENCER, IA

SPENCER
MUNI (SPW) **RNAV (GPS) Rwy 12¹²**
RNAV (GPS) Rwy 18¹²
RNAV (GPS) Rwy 30¹²
RNAV (GPS) Rwy 36¹²
VOR Rwy 12¹²
VOR Rwy 30³

¹NA when local weather not available.

²Category D, 800-2½.

³Category C, 800-2½, Category D, 800-2½.

SPRINGFIELD, MO

SPRINGFIELD-BRANSON
NATIONAL (SGF) **ILS or LOC Rwy 2¹**
RNAV (GPS) Rwy 2²
RNAV (GPS) Rwy 20²
VOR/DME or TACAN Rwy 2³
VOR or TACAN Rwy 20³

¹ILS, Category E, 700-2½. LOC, Category E,
800-2½.

²NA when local weather not available.

³Category E, 800-2½.

NAME ALTERNATE MINIMUMS

STORM LAKE, IA

STORMLAKE
MUNI (SLB) **NDB Rwy 17**
RNAV (GPS) Rwy 17
RNAV (GPS) Rwy 35

NA when local weather not available.

VINTON, IA

VINTON VETERANS MEMORIAL
AIRPARK (VTI) **RNAV (GPS) Rwy 9**
RNAV (GPS) Rwy 27

NA when local weather not available.

WASHINGTON, IA

WASHINGTON
MUNI (AWG) **RNAV (GPS) Rwy 18**
RNAV (GPS) Rwy 36

NA when local weather not available.

WASHINGTON, MO

WASHINGTON
RGNL (FYG) **RNAV (GPS) Rwy 15**
RNAV (GPS) Rwy 33
VOR-A

Category C, 800-2½.

NA when local weather not available.

WATERLOO, IA

WATERLOO
RGNL (ALO) **ILS or LOC Rwy 12¹**
LOC BC Rwy 30
RNAV (GPS) Rwy 12
RNAV (GPS) Rwy 30
VOR Rwy 12
VOR/DME Rwy 30

NA when local weather not available.

¹ILS, Category D, 700-2.

WEBSTER CITY, IA

WEBSTER CITY
MUNI (EBS) **RNAV (GPS) Rwy 32**

NA when local weather not available.

WEST PLAINS, MO

WEST PLAINS
RGNL (UNO) **RNAV (GPS) Rwy 18**
RNAV (GPS) Rwy 36
VOR Rwy 36

NA when local weather not available.

31 MAY 2012 to 28 JUN 2012

31 MAY 2012 to 28 JUN 2012



ALTERNATE MINS



NC-3

M6

12152

TAKE-OFF MINIMUMS AND (OBSTACLE) DEPARTURE PROCEDURES

12152

INSTRUMENT APPROACH PROCEDURE CHARTS

IFR TAKE-OFF MINIMUMS AND (OBSTACLE) DEPARTURE PROCEDURES

Civil Airports and Selected Military Airports

ALL USERS: Airports that have Departure Procedures (DPs) designed specifically to assist pilots in avoiding obstacles during the climb to the minimum enroute altitude, and/or airports that have civil IFR take-off minimums other than standard, are listed below. Take-off Minimums and Departure Procedures apply to all runways unless otherwise specified. Altitudes, unless otherwise indicated, are minimum altitudes in MSL.

DPs specifically designed for obstacle avoidance are referred to as Obstacle Departure Procedures (ODPs) and are described below in text, or published separately as a graphic procedure. If the (Obstacle) DP is published as a graphic procedure, its name will be listed below, and it can be found in either this volume (civil), or the applicable military volume, as appropriate. Users will recognize graphic obstacle DPs by the term "(OBSTACLE)" included in the procedure title; e.g., TETON TWO (OBSTACLE). If not specifically assigned a departure procedure (i.e., ODP, SID, or radar vector) as part of an IFR clearance, an ODP may be required to be flown for obstacle clearance, even though not specifically stated in the IFR clearance. When doing so in this manner, ATC should be informed when the ODP being used contains a specified route to be flown, restrictions before turning, and/or altitude restrictions.

Graphic DPs designed by ATC to standardize traffic flows, ensure aircraft separation and enhance capacity are referred to as "Standard Instrument Departures (SIDs)". SIDs also provide obstacle clearance and are published under the appropriate airport section. ATC clearance must be received prior to flying a SID.

CIVIL USERS NOTE: Title 14 Code of Federal Regulations Part 91 prescribes standard take-off rules and establishes take-off minimums for certain operators as follows: (1) Aircraft having two engines or less - one statute mile. (2) Aircraft having more than two engines - one-half statute mile. These standard minima apply in the absence of any different minima listed below.

MILITARY USERS NOTE: Civil (nonstandard) take-off minima are published below. For military take-off minima, refer to appropriate service directives.

NAME TAKE-OFF MINIMUMS

ALBIA, IA

ALBIA MUNI (4C8)

AMDT 3 92317 (FAA)

TAKE-OFF MINIMUMS: **Rwy 13, 31**, 300-1.

DEPARTURE PROCEDURE: **Rwy 31**, climb runway heading to 2000 before turning.

ALGONA, IA

ALGONA MUNI (AXA)

AMDT 4 11069 (FAA)

NOTE: **Rwy 12**, trees beginning 16' from DER, 491' left of centerline, up to 100' AGL/1319' MSL. **Rwy 30**, trees beginning 16' from DER, 290' left of centerline, up to 100' AGL/1329' MSL. Vehicle 255' from DER, 449' right of centerline, 15' AGL/1244' MSL. Trees beginning 3652' from DER, 1352' right of centerline, up to 100' AGL/1329' MSL.

NAME TAKE-OFF MINIMUMS

AMES, IA

AMES MUNI (AMW)

AMDT 4 10154 (FAA)

TAKE-OFF MINIMUMS: **Rwy 1**, std. w/ a min. climb of 227' per NM to 1800 or 1600-2½ for climb in visual conditions.

DEPARTURE PROCEDURE: **Rwy 1**, climb heading 014° to 1800 before proceeding on course or for climb in visual conditions, cross Ames Muni airport at or above 2400 before proceeding on course. **Rwy 13**, climb heading 133° to 2800 before turning right. **Rwy 19**, climb on a heading between 198° CW 013° from DER or climb on a heading between 140° CCW 013° from DER. **Rwy 31**, climb heading 313° to 1500 before proceeding on course.

NOTE: **Rwy 1**, trees beginning 63' from DER, 374' right of centerline, up to 74' AGL/974' MSL. Trees, and wsk on hanger beginning 906' from DER, 714' left of centerline, up to 77' AGL/1007' MSL. Terrain at DER, 240' left of centerline, 919' MSL. **Rwy 13**, trees, antenna on obstruction light pole and antenna on AWOS beginning 42' from DER, 90' right of centerline, up to 78' AGL/998' MSL. Terrain beginning 34' from DER, 181' left of centerline, 923' MSL. Trees beginning 918' from DER, 32' left of centerline, up to 83' AGL/993' MSL. **Rwy 19**, trees, poles, road and rod on building beginning 1004' from DER, 407' right of centerline, up to 79' AGL/1059' MSL. **Rwy 31**, trees, poles and roads beginning 214' from DER, 103' right of centerline, up to 57' AGL/987' MSL. Trees, poles and bush beginning 135' from DER, 109' left of centerline, up to 90' AGL/1020' MSL.

12152

TAKE-OFF MINIMUMS AND (OBSTACLE) DEPARTURE PROCEDURES

NC-3

TAKE-OFF MINIMUMS AND (OBSTACLE) DEPARTURE PROCEDURES

12152

ANKENY, IA

ANKENY RGNL (IKV)
AMDT 1 11069 (FAA)

TAKE-OFF MINIMUMS: **Rwy 4**, NA-obstacles. **Rwy 22**, 400-2 or std. w/min. climb of 375' per NM to 1400.

DEPARTURE PROCEDURE: **Rwy 18**, climbing left turn heading 150° to 2200 before proceeding on course.

Rwy 22, climb heading 222° to 2000 before turning north. **Rwy 36**, climbing right turn heading 050° to intercept TNU VOR/DME R-263 inbound to 3100 before turning west.

NOTE: **Rwy 18**, trees beginning 102' from DER, left and right of centerline, up to 90' AGL/951' MSL.

Transmission poles beginning 2388' from DER, left and right of centerline, up to 96' AGL/967' MSL.

Rwy 22, vehicles on road, trees and signs beginning 520' from DER, left and right of centerline up to 108' AGL/1029' MSL. Transmission towers beginning 5774' from DER, 775' left of centerline, up to 153' AGL/1096' MSL. Towers beginning 6929' from DER, 1155' right of centerline, up to 289' AGL/1253' MSL.

Rwy 36, trees beginning 582' from DER, left and right of centerline, up to 74' AGL/975' MSL. Vehicles on road beginning 725' from DER, 547' left of centerline, up to 15' AGL/922' MSL.

ATLANTIC, IA

ATLANTIC MUNI (AIO)
AMDT 6A 09155 (FAA)

TAKE-OFF MINIMUMS: **Rwy 2**, 300-1½ or std. w/min. climb of 208' per NM to 1400. **Rwy 12**, 400-2½ or std. w/min. climb of 321' per NM to 1700.

DEPARTURE PROCEDURE: **Rwy 12**, climb heading 119° to 1700 before proceeding on course. **Rwy 20**, climb heading 198° to 2300 before proceeding on course. **Rwy 30**, climb heading 299° to 1900 before proceeding on course.

NOTE: **Rwy 2**, terrain beginning 6' from DER, from 654' left of centerline to 433' right of centerline, up to 1175' MSL. Trees beginning 1210' from DER, 20' right of centerline, up to 75' AGL/1234' MSL. Trees beginning 2991' from DER, 202' left of centerline, up to 75' AGL/1234' MSL. **Rwy 12**, terrain beginning 8' from DER, from 336' left of centerline to 422' right of centerline, up to 1300' MSL. Trees beginning 2175' from DER, 498' right of centerline, up to 75' AGL/1214' MSL. Trees beginning 4525' from DER, 422' right of centerline, up to 75' AGL/1354' MSL. **Rwy 20**, terrain beginning 72' from DER, from 538' left of centerline to 623' right of centerline, up to 1185' MSL. Trees beginning 2157' from DER, 44' left of centerline, up to 75' AGL/1234' MSL. **Rwy 30**, terrain beginning 100' from DER, from 1615' left of centerline to 758' right of centerline, up to 1293' MSL.

AUDUBON, IA

AUDUBON COUNTY (ADU)
AMDT 1 93175 (FAA)

TAKE-OFF MINIMUMS: **Rwy 32**, 300-1.

AURORA, MO

JERRY SUMNERS SR. AURORA MUNI (2H2)
AMDT 1 90067 (FAA)

TAKE-OFF MINIMUMS: **Rwy 18**, 300-1 or std. with a min. climb of 400' per NM to 1600.

BELLE PLAINE, IA

BELLE PLAINE MUNI (TZT)
AMDT 1 12096 (FAA)

TAKE-OFF MINIMUMS: **Rwy 36**, 400-2 or std. w/min. climb of 440' per NM to 1200.

NOTE: **Rwy 18**, multiple trees beginning 142' from DER, left and right of centerline, up to 94' AGL/854' MSL. **Rwy 36**, multiple towers, tanks, trees, poles, buildings, grain elevators, and roads beginning 31' from DER, left and right of centerline, up to 174' AGL/954' MSL. Trees beginning 4901' from DER, 962' right of centerline, up to 93' AGL/954' MSL. Tower 1.8 NM from DER, 2320' right of centerline, 207' AGL/1097' MSL.

BLOOMFIELD, IA

BLOOMFIELD MUNI (4K6)
ORIG-A 08185 (FAA)

DEPARTURE PROCEDURE: **Rwy 18**, climb runway heading to 1300 before turning.

NOTE: **Rwy 18**, building 353' from departure end of runway, 306' left of centerline, 30' AGL/915' MSL.

BOLIVAR, MO

BOLIVAR MUNI (M17)
ORIG 07186 (FAA)

TAKE-OFF MINIMUMS: **Rwy 36**, 200-1¼ or std. w/min. climb of 252' per NM to 1400.

NOTE: **Rwy 18**, east-west road, vehicle and transmission lines and poles beginning 627' from departure end of runway, up to 40' AGL/1138' MSL. Multiple trees beginning 667' from departure end of runway, 6' left of centerline, up to 75' AGL/1148' MSL. Silo 1059' from departure end of runway, 677' left of centerline, 100' AGL/1200' MSL. Multiple trees beginning 147' from departure end of runway, 39' right of centerline, up to 75' AGL/1157' MSL. **Rwy 36**, transmission lines and poles beginning 1208' from departure end of runway, 189' left of centerline, up to 40' AGL/1137' MSL. East-west transmission lines and poles beginning 1925' from departure end of runway, up to 50' AGL/1165' MSL. Multiple trees beginning 659' from departure end of runway, 58' right of centerline, up to 75' AGL/1201' MSL. Tree 5471' from departure end of runway, 1766' left of centerline, 100' AGL/1269' MSL.

BOONE, IA

BOONE MUNI (BNW)
AMDT 5 09015 (FAA)

TAKE-OFF MINIMUMS: **Rwys 2, 20**, NA-Environmental. NOTE: **Rwy 15**, tree 3565' from departure end of runway, 816' right of centerline, 100' AGL/1259' MSL. **Rwy 33**, tree 1442' from departure end of runway, 631' left of centerline, 100' AGL/1259' MSL. Vehicle on road 561' from departure end of runway, 573' right of centerline, 15' AGL/1174' MSL. Tank 3135' from departure end of runway, 1335' right of centerline, 140' AGL/1287' MSL.

31 MAY 2012 to 28 JUN 2012

31 MAY 2012 to 28 JUN 2012

12152

TAKE-OFF MINIMUMS AND (OBSTACLE) DEPARTURE PROCEDURES

NC-3

TAKE-OFF MINIMUMS AND (OBSTACLE) DEPARTURE PROCEDURES

12152

BOONVILLE, MO

JESSE VIERTEL MEMORIAL (VER)

ORIG 07130 (FAA)

NOTE: **Rwy 18**, multiple trees beginning 368' from departure end of runway, 383' left of centerline, up to 80' AGL/761' MSL. Road and vehicle 1232' from departure end of runway, on centerline, 17' AGL/746' MSL. Multiple trees beginning 500' from departure end of runway, 109' right of centerline, up to 80' AGL/786' MSL. **Rwy 36**, multiple trees and pole beginning 701' from departure end of runway, 67' left of centerline, up to 100' AGL/810' MSL. Multiple trees beginning 200' from departure end of runway, 334' right of centerline, up to 80' AGL/794' MSL.

BOWLING GREEN, MO

BOWLING GREEN MUNI (H19)

ORIG 83132 (FAA)

TAKE-OFF MINIMUMS: **Rwy 31**, 300-1.

BRANSON, MO

BRANSON (BBG)

ORIG 09127 (FAA)

DEPARTURE PROCEDURE: **Rwy 32**, climb heading 323° to 2000 before turning left.

NOTE: **Rwy 14**, numerous trees beginning 1214' from DER, 4' right of centerline, up to 100' AGL/1449' MSL. **Rwy 32**, numerous trees beginning 77' from DER, 452' left of centerline, up to 100' AGL/1289' MSL.

M. GRAHAM CLARK DOWNTOWN (PLK)

AMDT 2 11069 (FAA)

TAKE-OFF MINIMUMS: **Rwy 30**, std. w/min. climb of 244' per NM to 1800 or 1400-2½ for climb in visual conditions.

DEPARTURE PROCEDURE: **Rwy 12**, climb heading 117° to 1600 before proceeding on course. **Rwy 30**, for climb in visual conditions: cross M. Graham Clark-Taney County Airport at or above 2200 before proceeding on course.

NOTE: **Rwy 12**, trees beginning 796' from DER, 468' right of centerline, up to 50' AGL/989' MSL.

BRANSON WEST, MO

BRANSON WEST MUNI-EMERSON FIELD (FWB)

ORIG 11349 (FAA)

NOTE: **Rwy 3**, trees beginning 167' from DER, left and right of centerline, up to 100' AGL/1479' MSL. Vehicles on road beginning 22' from DER, from 15' left of centerline, up to 15' AGL/1394' MSL. Vehicle on road 1485' from DER, 615' right of centerline, 15' AGL/1394' MSL. **Rwy 21**, trees beginning 230' from DER, left and right of centerline, up to 100' AGL/1419' MSL. Power lines beginning 2501' from DER, 788' left of centerline, up to 100' AGL/1379' MSL.

BROOKFIELD, MO

NORTH CENTRAL MISSOURI RGNL (MO8)

AMDT 1 09351 (FAA)

DEPARTURE PROCEDURE: **Rwy 36**, climb heading 359° to 1300 before turning East.

NOTE: **Rwy 18**, tree 1432' from DER, 397' right of centerline, 100' AGL/869' MSL, pole 887' from DER, 458' left of centerline, 44' AGL/855' MSL. Tree 1356' from DER, 110' left of centerline, 100' AGL/864' MSL. **Rwy 36**, numerous trees beginning 243' from DER 439' left of centerline, up to 100' AGL/890' MSL. Numerous trees beginning 463' from DER, 13' right of centerline, up to 100' AGL/893' MSL. Building 690' from DER, 477' left of centerline, 30' AGL/867' MSL. Pole 1066' from DER, 666' right of centerline 35' AGL/875' MSL.

BURLINGTON, IA

SOUTHEAST IOWA RGNL (BRL)

AMDT 1 92233 (FAA)

TAKE-OFF MINIMUMS: **Rwy 36**, 300-1.

DEPARTURE PROCEDURE: **Rwys 30, 36**, climb runway heading to 1500 before turning.

BUTLER, MO

BUTLER MEMORIAL (BUM)

ORIG 11293 (FAA)

TAKE-OFF MINIMUMS: **Rwy 18**, 500-3 or std. w/min. climb of 216' per NM to 1500.

NOTE: **Rwy 18**, tower 2.5 NM from DER, 1636' right of centerline, 493' AGL/1293' MSL. Trees beginning at DER, 317' left and right of centerline, up to 100' AGL/992' MSL. Buildings beginning 44' from DER, 350' right of centerline, up to 19' AGL/910' MSL. Terrain beginning 31' from DER, 104' left and right of centerline, up to 909' MSL. **Rwy 36**, trees beginning 1254' from DER, left and right of centerline, up to 100' AGL/970' MSL. Vehicle on road beginning at DER, 350' left of centerline, 15' AGL/885' MSL. Terrain beginning 192' from DER, 37' left and right of centerline, up to 886' MSL.

CABOOL, MO

CABOOL MEMORIAL (TVB)

AMDT 2 10350 (FAA)

TAKE-OFF MINIMUMS: **Rwy 3**, 300-2½ or std. w/min. climb of 453' per NM to 1700. **Rwy 21**, 500-3 or std. w/min. climb of 298' per NM to 1900.

DEPARTURE PROCEDURE: **Rwy 3**, climb heading 030° to 1800 before turning right. **Rwy 21**, climb heading 210° to 2000 before turning left.

NOTE: **Rwy 3**, trees beginning 25' from DER, 159' left of centerline up to 100' AGL/1328' MSL. Trees beginning 33' from DER, 312' right of centerline up to 100' AGL/1324' MSL. Vehicle on road 33' from DER, 99' right of centerline 15' AGL/1239' MSL. Railroad 27' from DER, 283' left of centerline 23' AGL/1251' MSL. **Rwy 21**, trees beginning 50' from DER, 353' left of centerline up to 100' AGL/1334' MSL. Trees beginning 189' from DER, 424' right of centerline up to 100' AGL/1328' MSL. Vehicle on road 61' from DER, 111' left of centerline 15' AGL/1236' MSL.

31 MAY 2012 to 28 JUN 2012

31 MAY 2012 to 28 JUN 2012

12152

TAKE-OFF MINIMUMS AND (OBSTACLE) DEPARTURE PROCEDURES

NC-3

TAKE-OFF MINIMUMS AND (OBSTACLE) DEPARTURE PROCEDURES

12152

CAMERON, MO

CAMERON MEMORIAL (EZZ)
ORIG 10098 (FAA)

NOTE: **Rwy 17**, trees beginning 31' from DER, 287' left of centerline, up to 7' AGL/1024' MSL. Trees beginning 84' from DER, 428' right of centerline, up to 61' AGL/1041' MSL. **Rwy 35**, trees and rising terrain beginning 36' from DER, 113' left of centerline, up to 30' AGL/1077' MSL. Trees and rising terrain beginning 79' from DER, 119' right of centerline, up to 57' AGL/1105' MSL. Buildings and stacks beginning 711' from DER, 619' right of centerline, up to 57' AGL/1082' MSL. Train on railroad tracks 1636' from DER, left and right of centerline, 23' AGL/1085' MSL.

CAMDENTON, MO

CAMDENTON MEMORIAL (H21)
AMDT 1 10266 (FAA)

NOTE: **Rwy 15**, trees beginning 2' from DER, 199' right of centerline, up to 100' AGL/1189' MSL. Trees beginning 25' from DER, 150' left of centerline, up to 100' AGL/1159' MSL. Power poles beginning 230' from DER, 502' right of centerline, up to 38' AGL/1078' MSL. Vehicle on road beginning 88' from DER, 257' right of centerline, up to 15' AGL/1085' MSL. REIL 39' from DER, 76' right of centerline, up to 2' AGL/1061' MSL. REIL 40' from DER, 76' left of centerline, up to 2' AGL/1061' MSL. **Rwy 33**, trees beginning 42' from DER, 42' right of centerline, up to 100' AGL/1159' MSL. Trees beginning 3' from DER, 130' left of centerline, up to 100' AGL/1159' MSL. Power poles beginning 575' from DER, 65' right of centerline, up to 30' AGL/1072' MSL. Power poles beginning 244' from DER, 142' left of centerline, up to 30' AGL/1101' MSL. Light poles beginning 142' from DER, 319' left of centerline, up to 26' AGL/1083' MSL. Fuel tank 72' from DER, 263' left of centerline, up to 17' AGL/1077' MSL. REIL 40' from DER, 76' right of centerline, up to 5' AGL/1054' MSL. REIL 41' from DER, 76' left of centerline, up to 5' AGL/1054' MSL. Fence 272' from DER, 258' left of centerline, up to 1' AGL/1059' MSL. Buildings beginning 150' from DER, 296' left of centerline, up to 20' AGL/1080' MSL.

CAPE GIRARDEAU, MO

CAPE GIRARDEAU MUNI (CGI)
AMDT 8 12124 (FAA)

TAKE-OFF MINIMUMS: **Rwy 10**, 300-1¼ or std. w/min. climb of 230' per NM to 600, or alternatively, with standard takeoff minimums and a normal 200' per NM climb gradient, takeoff must occur no later than 1700' prior to DER. **Rwy 20**, 300-1¼ or std. w/min. climb of 300' per NM to 600.

DEPARTURE PROCEDURE: **Rwy 2**, climbing right turn heading 060° and CGI VOR/DME R-039 to 2600 before proceeding on course. **Rwy 28**, climb on heading 285° to 1200 before proceeding on course.

NOTE: **Rwy 2**, trees beginning 899' from DER, 181' right of centerline, up to 100' AGL/439' MSL. **Rwy 10**, trees beginning 1393' from DER, 802' left of centerline, up to 111' AGL/501' MSL. Trees beginning 2575' from DER, 216' right of centerline, up to 116' AGL/476' MSL. **Rwy 20**, trees beginning 177' from DER, 377' left of centerline, up to 32' AGL, 372' MSL. Trees beginning 1523' from DER, 456' right of centerline, up to 79' AGL/419' MSL. Trees beginning 4527' from DER, left and right of centerline, up to 118' AGL/531' MSL. **Rwy 28**, trees beginning 2880' from DER, left and right of centerline, up to 100' AGL/439' MSL.

12152

TAKE-OFF MINIMUMS AND (OBSTACLE) DEPARTURE PROCEDURES

CARROLL, IA

ARTHUR N. NEU (CIN)
ORIG 90263 (FAA)

TAKE-OFF MINIMUMS: **Rwys 3, 13, 21, 31**, 300-1.

CARUTHERSVILLE, MO

CARUTHERSVILLE MEMORIAL (M05)
ORIG 03135 (FAA)

TAKE-OFF MINIMUMS: **Rwy 36**, 300-2 or std. with min. climb of 250' per NM to 600.

NOTE: **Rwy 36**, tower, 6503' from departure end of runway, 534' right of centerline, 202' AGL/470' MSL.

CASSVILLE, MO

CASSVILLE MUNI (94K)
ORIG 10154 (FAA)

NOTE: **Rwy 9**, tank 4668' from DER, 1209' left of centerline, 136' AGL/1616' MSL. Tower 4322' from DER, 1224' left of centerline, 140' AGL/1600' MSL. Powerlines 1530' from DER, on centerline, 75' AGL/1544' MSL.

CEDAR RAPIDS, IA

THE EASTERN IOWA (CID)
AMDT 4 10266 (FAA)

NOTE: **Rwy 9**, building 354' from DER, 563' right of centerline, 22' AGL/873' MSL. Pole 678' from DER, 642' right of centerline, 33' AGL/884' MSL. Obstruction light on building 1133' from DER, 596' right of centerline, 41' AGL/890' MSL. Antennas beginning 491' from DER, 314' left of centerline, up to 28' AGL/879' MSL. **Rwy 13**, vehicles on road 961' from DER, 709' left of centerline, up to 15' AGL/874' MSL. **Rwy 27**, poles beginning 1338' from DER, 700' right of centerline, up to 34' AGL/895' MSL. **Rwy 31**, vehicles on road beginning 28' from DER, left and right of centerline, up to 17' AGL/876' MSL. Tree 3464' from DER, 180' right of centerline, 100' AGL/979' MSL.

CENTERVILLE, IA

CENTERVILLE MUNI (TVK)
ORIG 10154 (FAA)

NOTE: **Rwy 16**, trees beginning 37' from DER, 282' left of centerline, up to 25' AGL/1034' MSL. Trees beginning 86' from DER, 213' right of centerline, up to 20' AGL/1031' MSL.

CHARITON, IA

CHARITON MUNI (CNC)
ORIG 09351 (FAA)

TAKE-OFF MINIMUMS: **Rwy 10**, std. w/min. climb of 223' per NM to 1700 or 900-2½ for climb in visual conditions.

DEPARTURE PROCEDURE: **Rwy 10**, for climb in visual conditions cross Chariton Muni airport at or above 1800 MSL before proceeding on course.

NOTE: **Rwy 10**, tower 2.62 NM from DER, 2173' left of centerline, 470' AGL/1480' MSL. **Rwy 17**, hangar 13' from DER, 429' left of centerline, 25' AGL/1084' MSL. Vehicle on road beginning 506' from DER, from left to right of centerline, up to 15' AGL/1074' MSL. Tree 2720' from DER, 451' right of centerline, 100' AGL/1159' MSL. **Rwy 35**, vehicle on road 17' from DER, 421' left of centerline, 15' AGL/1054' MSL.

TAKE-OFF MINIMUMS AND (OBSTACLE) DEPARTURE PROCEDURES

12152

CHARLES CITY, IA

NORTHEAST IOWA RGNL (CCY)

ORIG 09015 (FAA)

TAKE-OFF MINIMUMS: **Rwys 4, 17, 22, 35**, NA-Environmental.NOTE: **Rwy 12**, trees beginning 1002' from departure end of runway, 351' right of centerline, up to 100' AGL/1209' MSL. **Rwy 30**, trees beginning 1804' from departure end of runway, 621' right of centerline, up to 100' AGL/1229' MSL.

CHEROKEE, IA

CHEROKEE COUNTY RGNL (CKP)

AMDT 3 09127 (FAA)

TAKE-OFF MINIMUMS: **Rwys 1, 19**, NA-environmental. **Rwy 36**, 300-1¼ or std. w/ min. climb of 373' per NM to 1600.DEPARTURE PROCEDURE: **Rwy 18**, climb heading 178° to 1700 before proceeding on course. **Rwy 36**, climb heading 358° to 1900 before proceeding on course.NOTE: **Rwy 18**, rising terrain, buildings, vehicles on road, poles, signs, trees beginning at DER, 305' left of centerline, up to 65' AGL/1298' MSL. Trains on railroad beginning at DER, 348' right of centerline, up to 23' AGL/1242' MSL. **Rwy 36**, vehicles on road, trees beginning at DER, 416' left of centerline, up to 65' AGL/1284' MSL. Row of trees 726' from DER, from left to right of centerline, up to 65' AGL/1284' MSL. Building 741' from DER, 557' right of centerline, 24' AGL/1239' MSL. Tower 5267' from DER, 382' left of centerline, 160' AGL/1390' MSL. Tower 6206' from DER, 171' right of centerline, 160' AGL/1440' MSL.

CHILLICOTHE, MO

CHILLICOTHE MUNI (CHT)

ORIG 09183 (FAA)

TAKE-OFF MINIMUMS: **Rwys 2, 20**, NA-Environmental.NOTE: **Rwy 14**, trees beginning 287' from DER, 261' left of centerline, up to 150' AGL/884' MSL. Vehicle on road 542' from DER, 454' right of centerline, 15' AGL/779' MSL. Antenna 1338' from DER, 349' left of centerline, 46' AGL/806' MSL. Tree 3217' from DER, 1285' right of centerline, 150' AGL/884' MSL. **Rwy 32**, trees beginning 12' from DER, 63' left of centerline, up to 150' AGL/898' MSL. Pole 142' from DER, 368' left of centerline, 43' AGL/792' MSL. Trees beginning 164' from DER, 129' right of centerline, up to 150' AGL/924' MSL.

CLARINDA, IA

SCHENCK FIELD (ICL)

AMDT 1 10210 (FAA)

TAKE-OFF MINIMUMS: **Rwys 13, 31**, NA-Environmental.DEPARTURE PROCEDURE: **Rwy 2**, climb heading 020° to 1700 before turning left.NOTE: **Rwy 2**, trees 129' from DER, 146' left of centerline, 40' AGL/1030' MSL. **Rwy 20**, trees beginning 78' from DER, 75' right of centerline, up to 89' AGL/1069' MSL. Trees beginning 716' from DER, 40' left of centerline, up to 72' AGL/1052' MSL. Pole 2125' from DER, 187' right of centerline, 67' AGL/1047' MSL. Pole 1825' from DER, 482' left of centerline, 57' AGL/1037' MSL. Road 465' from DER, 302' right of centerline, up to 28' AGL/1008' MSL. Vehicle on road 408' from DER, 52' left of centerline, up to 25' AGL/1005' MSL.

12152

CLARION, IA

CLARION MUNI (CAV)

AMDT 1 10042 (FAA)

NOTE: **Rwy 14**, tree 345' from DER, 551' left of centerline, 100' AGL/1264' MSL. **Rwy 32**, trees beginning 134' from DER, 396' left of centerline, up to 100' AGL/1254' MSL. Vehicle on road 333' from DER, 572' right of centerline, up to 15' AGL/1174' MSL.

CLINTON, IA

CLINTON MUNI (CWI)

AMDT 1 10126 (FAA)

NOTE: **Rwy 3**, trees beginning 34' from DER, 393' left of centerline, up to 20' AGL/711' MSL. Obstruction light on DME 387' from DER, 264' left of centerline, 11' AGL/720' MSL. **Rwy 14**, vehicle on road 56' from DER, 483' right of centerline, 15' AGL/694' MSL. Vehicle on road 391' from DER, 3' left of centerline, 15' AGL/702' MSL. **Rwy 21**, tree 405' from DER, 500' left of centerline, 16' AGL/706' MSL. **Rwy 32**, vehicle on road 38' from DER, 319' left of centerline, 15' AGL/716' MSL. Fence 169' from DER, 192' right of centerline, 8' AGL/706' MSL. Vehicle on road 508' from DER, 8' left of centerline, 15' AGL/718' MSL. Trees beginning 1302' from DER, 448' left of centerline, up to 68' AGL/767' MSL. Antenna on hopper 1315' from DER, 850' left of centerline, 82' AGL/781' MSL.

COLUMBIA, MO

COLUMBIA RGNL (COU)

AMDT 5 12152 (FAA)

DEPARTURE PROCEDURE: **Rwy 31**, climb heading 312° to 1900 before turning right.NOTE: **Rwy 13**, trees 2122' from DER, 579' left of centerline, 100' AGL/979' MSL. **Rwy 20**, trees 1288' from DER, 781' right of centerline, 60' AGL/940' MSL. Trees 2139' from DER, 1021' left of centerline, 100' AGL/959' MSL. **Rwy 31**, trees 973' from DER, 622' right of centerline, 100' AGL/999' MSL. Trees 2914' from DER, 347' left of centerline, 100' AGL/979' MSL.

CORNING, IA

CORNING MUNI (CRZ)

AMDT 2 07354 (FAA)

NOTE: **Rwy 18**, road w/ vehicle, 159' from departure end of runway, on centerline, 23' AGL/1262' MSL. Trees beginning 161' from departure end of runway, 110' left of centerline, up to 100' AGL/1329' MSL. **Rwy 36**, trees beginning 945' from departure end of runway, 319' left of centerline, up to 100' AGL/1339' MSL. Tree 1212' from departure end of runway, 653' right of centerline, 100' AGL/1309' MSL.

COUNCIL BLUFFS, IA

COUNCIL BLUFFS MUNI (CBF)

AMDT 1 11125 (FAA)

NOTE: **Rwy 18**, trees 73' from DER, 463' right of centerline, 100' AGL/1269' MSL. **Rwy 32**, trees beginning 782' from DER, 91' right of centerline, 100' AGL/1299' MSL. Trees 1310' from DER, 206' left of centerline, 100' AGL/1329' MSL. **Rwy 36**, trees 1196' from DER, 453' right of centerline, 100' AGL/1279' MSL.

TAKE-OFF MINIMUMS AND (OBSTACLE) DEPARTURE PROCEDURES

NC-3

TAKE-OFF MINIMUMS AND (OBSTACLE) DEPARTURE PROCEDURES

12152

CRESCO, IA

ELLEN CHURCH FIELD (CJJ)

ORIG 88182 (FAA)

DEPARTURE PROCEDURE: **Rwys 15, 33**, climb runway heading to 1700 before turning.

CRESTON, IA

CRESTON MUNI (CSQ)

AMDT 2 07018 (FAA)

TAKE-OFF MINIMUMS: **Rwys 4, 22**, NA-Environmental.

NOTE: **Rwy 16**, multiple trees and terrain beginning 152' from departure end of runway, 128' left of centerline, up to 70' AGL/1360' MSL. Multiple bushes and terrain beginning 91' from departure end of runway, 93' right of centerline, up to 10' AGL/1313' MSL. Pole 242' from departure end of runway, 199' right of centerline, 7' AGL/1301' MSL. **Rwy 34**, terrain 561' from departure end of runway, 17' left of centerline, 1309' MSL. Terrain beginning 169' from departure end of runway, 236' right of centerline, up to 1309' MSL. Road/vehicle 756' from departure end of runway, on centerline, 15' AGL/1314' MSL.

CUBA, MO

CUBA MUNI (UBX)

AMDT 2 11013 (FAA)

NOTE: **Rwy 18**, terrain, trees, and power poles beginning at DER, left and right of centerline, up to 100' AGL/1139' MSL. Trees 2224' from DER, 859' left of centerline, 100' AGL/1159' MSL. **Rwy 36**, terrain, trees, power poles, and cars on roadway beginning at DER, left and right of centerline, up to 100' AGL/1145' MSL.

DAVENPORT, IA

DAVENPORT MUNI (DVN)

AMDT 2 11069 (FAA)

DEPARTURE PROCEDURE: **Rwy 15**, climb heading 149° to 2400 before turning left. **Rwy 21**, climb heading 209° to 1400 before turning left.

NOTE: **Rwy 3**, vehicles on roadway, rising terrain and trees beginning 19' from DER, 58' left of centerline, up to 65' AGL/810' MSL. Vehicles on roadway, rising terrain and trees beginning 536' from DER, 32' right of centerline, up to 36' AGL/777' MSL. **Rwy 15**, rising terrain and trees beginning 54' from DER, 49' left of centerline, up to 100' AGL/849' MSL. Rising terrain and trees beginning 85' from DER, 62' right of centerline, up to 79' AGL/810' MSL. **Rwy 21**, rising terrain and trees beginning 53' from DER, left and right of centerline, up to 43' AGL/784' MSL. **Rwy 33**, rising terrain beginning at DER, left and right of centerline, up to 784' MSL.

DECORAH, IA

DECORAH MUNI (DEH)

AMDT 2 11125 (FAA)

DEPARTURE PROCEDURE: **Rwy 29**, Climb heading 294° to 1600 before turning left.

NOTE: **Rwy 11**, terrain beginning 50' from DER, 216' left of centerline, up to 1166' MSL. Terrain beginning 23' from DER, 218' right of centerline, up to 1170' MSL. Vehicle on road 406' left of centerline, crossing left to right, up to 15' AGL/1189' MSL. Poles beginning 378' from DER, 28' left of centerline, up to 63' AGL/1223' MSL. Tree 89' from DER, 337' left of centerline, 10' AGL/1170' MSL. Trees 770' from DER, 201' left of centerline, 37' AGL/1197' MSL. Buildings and signs 1475' from DER, 198' left of centerline, up to 49' AGL/1229' MSL. Trees beginning 2890' from DER, 397' left of centerline, up to 100' AGL/1250' MSL. Trees 1292' from DER, 418' right of centerline, 66' AGL/1206' MSL. Poles and signs beginning 2058' from DER, 28' right of centerline, up to 57' AGL/1227' MSL. **Rwy 29**, trees beginning 443' from DER, 485' left of centerline, up to 95' AGL/1205' MSL.

DENISON, IA

DENISON MUNI (DNS)

ORIG 08269 (FAA)

TAKE-OFF MINIMUMS: **Rwys 6, 18, 24, 36**, NA-Environmental.

NOTE: **Rwy 12**, trees beginning 10' from departure end of runway, 202' left of centerline, up to 100' AGL/1352' MSL, trees beginning 293' from departure end of runway, 190' right of centerline, up to 100' AGL/1352' MSL.

DES MOINES, IA

DES MOINES INTL (DSM)

AMDT 10 03135 (FAA)

NOTE: **Rwy 5**, tree 1057' from departure end of runway, 644' left of centerline, 69' AGL/1004' MSL. Tree 2398' from departure end of runway, 567' right of centerline, 89' AGL/1024' MSL. Tree 1701' from departure end of runway, 564' left of centerline, 70' AGL/1005' MSL. Tree 3176' from departure end of runway, 425' right of centerline, 106' AGL/1041' MSL. Tree 2610' from departure end of runway, 774' right of centerline, 91' AGL/1026' MSL. Pole 1202' from departure end of runway, 500' left of centerline, 55' AGL/990' MSL. Tree 1541' from departure end of runway, 390' left of centerline, 54' AGL/989' MSL. Pole 2281' from departure end of runway, 365' right of centerline, 71' AGL/1001' MSL. Pole 2306' from departure end of runway, 371' right of centerline, 66' AGL/1001' MSL. Tree 2306' from departure end of runway, 371' left of centerline, 59' AGL/994' MSL. Tree 3754' from departure end of runway, 270' left of centerline, 96' AGL/1031' MSL. Obstruction right 191' from departure end of runway, 253' left of centerline, 6' AGL/941' MSL.

Rwy 13, tree 727' from departure end of runway, 619' right of centerline, 40' AGL/997' MSL. Tree 1093' from departure end of runway, 690' right of centerline, 46' AGL/1003' MSL. Tree 799' from departure end of runway, 598' right of centerline, 32' AGL/989' MSL. Tree 1266' from departure end of runway, 652' right of centerline, 43' AGL/1000' MSL. Tree 1427' from departure end of runway, 830' left of centerline, 45' AGL/1002' MSL. Tree 1793' from departure end of runway, 794' right of centerline, 48' AGL/1005' MSL. **Rwy 31**, tree 2492' from departure end of runway, 912' right of centerline, 66' AGL/977' MSL.

31 MAY 2012 to 28 JUN 2012

31 MAY 2012 to 28 JUN 2012

12152

TAKE-OFF MINIMUMS AND (OBSTACLE) DEPARTURE PROCEDURES

TAKE-OFF MINIMUMS AND (OBSTACLE) DEPARTURE PROCEDURES

12152

DEXTER, MO

DEXTER MUNI (DXE)

AMDT 3 08213 (FAA)

TAKE-OFF MINIMUMS: **Rwy 36**, std. w/ min. climb of 251' per NM to 1100 or 900-2½ for climb in visual conditions.

DEPARTURE PROCEDURE: **Rwy 36**, for climb in visual conditions: Cross Dexter Muni airport at or above 1100 MSL before proceeding on course.

NOTE: **Rwy 36**, trees and wind sock beginning 144' from departure end of runway, 128' right of centerline, up to 87' AGL/399' MSL. Trees beginning 2295' from departure end of runway, 169' right of centerline, up to 78' AGL/388' MSL. Trees beginning 2342' from departure end of runway, 164' left of centerline, up to 74' AGL/387' MSL.

DUBUQUE, IA

DUBUQUE RGNL (DBQ)

ORIG 06271 (FAA)

TAKE-OFF MINIMUMS: **Rwy 13**, 200-1¼ or std. w/ min. climb of 226' per NM to 1300, or alternatively, w/ standard takeoff minimums and a normal 200'/NM climb gradient, takeoff must occur no later than 1700' prior to departure end of runway.

NOTE: **Rwy 13**, multiple trees and poles beginning 2916' from departure end of runway, 20' left of centerline, up to 74' AGL/1185' MSL. Multiple trees and poles beginning 4857' from departure end of runway, 559' right of centerline, up to 68' AGL/1227' MSL. **Rwy 18**, elevator 3457' from departure end of runway, 242' left of centerline, 80' AGL/1150' MSL. Tree 1987' from departure end of runway, 938' right of centerline, 77' AGL/1088' MSL. **Rwy 31**, tower and multiple trees beginning 2427' from departure end of runway, 490' left of centerline, up to 85' AGL/1168' MSL.

EAGLE GROVE, IA

EAGLE GROVE MUNI (EAG)

AMDT 3 10042 (FAA)

TAKE-OFF MINIMUMS: **Rwys 1, 19**, NA-Enviromental. NOTE: **Rwy 13**, vehicle on road 520' from DER, 495' left of centerline, 15' AGL/1154' MSL. Train on tracks, 493' from DER, 626' left of centerline, 23' AGL/1152' MSL. Trees beginning 4352' from DER, 1120' left of centerline, up to 100' AGL/1239' MSL. **Rwy 31**, vehicle on road abeam DER, 281' left of centerline, 15' AGL/1154' MSL.

EMMETSBURG, IA

EMMETSBURG MUNI (EGQ)

AMDT 1 10042 (FAA)

TAKE-OFF MINIMUMS: **Rwys 4, 22, 17, 35**, NA-Enviromental.

NOTE: **Rwy 13**, trees beginning 754' from DER, 663' right of centerline, up to 45' AGL/1254' MSL. **Rwy 31**, trees beginning 392' from DER, 280' left of centerline, up to 45' AGL/1254' MSL. Trees beginning 1001' from DER, 393' right of centerline, up to 45' AGL/1254' MSL.

EXCELSIOR SPRINGS, MO

EXCELSIOR SPRINGS MEMORIAL (3EX)

ORIG 80360 (FAA)

DEPARTURE PROCEDURE: **Rwys 1, 19**, eastbound departures (010°CW 190°) climb runway heading to 1850 before turning.

FAIRFIELD, IA

FAIRFIELD MUNI (FFL)

ORIG 07074 (FAA)

TAKE-OFF MINIMUMS: **Rwys 8, 26**, NA-environmental

FARMINGTON, MO

FARMINGTON RGNL (FAM)

AMDT 5 10266 (FAA)

DEPARTURE PROCEDURE: **Rwy 20**, climb heading 202° to 2100 before turning right.

NOTE: **Rwy 2**, trees, poles, fence, road, vehicle on road, and buildings beginning 77' from DER, 21' left of centerline, up to 83' AGL/1049' MSL. Trees, poles, antenna, road, and terrain beginning 41' from DER, 3' right of centerline, up to 85' AGL/1045' MSL. **Rwy 20**, trees beginning 50' from DER, 386' left of centerline, up to 76' AGL/956' MSL. Trees, poles, vehicle on road, and terrain beginning 92' from DER, 175' right of centerline, up to 90' AGL/950' MSL.

FESTUS, MO

FESTUS MEMORIAL (FES)

AMDT 1 90039 (FAA)

TAKE-OFF MINIMUMS: **Rwy 36**, 700-1 or std. with a min. climb of 400' per NM to 700.

DEPARTURE PROCEDURE: **Rwys 18, 36**, east departures, climb runway heading to 1500 before turning on course.

FOREST CITY, IA

FOREST CITY MUNI (FXY)

AMDT 2 10042 (FAA)

TAKE-OFF MINIMUMS: **Rwy 33**, 300-2¼ or std. w/ a min. climb of 242' per NM to 1700.

DEPARTURE PROCEDURE: **Rwy 33**, climb heading 332° to 1800 before turning right.

NOTE: **Rwy 9**, trees beginning 4' from DER, 106' right of centerline, up to 70' AGL/1289' MSL. Trees beginning 551' from DER, 382' left of centerline, up to 70' AGL/1269' MSL. **Rwy 15**, trees beginning 27' from DER, 345' left of centerline, up to 70' AGL/1256' MSL. Posts beginning 7' from DER, 142' right of centerline, up to 10' AGL/1209' MSL. **Rwy 27**, train 266' from DER, left and right of centerline, up to 23' AGL/1252' MSL. **Rwy 33**, vehicles on road beginning 344' from DER, left and right of centerline, up to 1223' MSL. Building 182' from DER, 483' left of centerline, 24' AGL/1224' MSL. Electrical systems beginning 250' from DER, 441' left of centerline, up to 47' AGL/1247' MSL. Trees beginning 429' from DER, 26' left of centerline, up to 70' AGL/1235' MSL.

31 MAY 2012 to 28 JUN 2012

31 MAY 2012 to 28 JUN 2012

12152

TAKE-OFF MINIMUMS AND (OBSTACLE) DEPARTURE PROCEDURES

NC-3

TAKE-OFF MINIMUMS AND (OBSTACLE) DEPARTURE PROCEDURES

12152

FORT DODGE, IA

FORT DODGE RGNL (FOD)
AMDT 1 09351 (FAA)

DEPARTURE PROCEDURE: **Rwy 24**, Climb heading 243° to 1700 before turning south.

NOTE: **Rwy 6**, trees beginning 106' from DER, 284' left of centerline, up to 16' AGL/1166' MSL. Trees beginning 1138' from DER, 665' left of centerline, up to 76' AGL/1226' MSL. **Rwy 12**, pole beginning 431' from DER, 504' left of centerline, 31' AGL/1171' MSL. Trees beginning 456' from DER, 481' left of centerline, up to 39' AGL/1179' MSL. Building 592' from DER, 484' left of centerline, 24' AGL/1164' MSL. Poles beginning 1037' from DER, 306' right of centerline, up to 41' AGL/1171' MSL. Trees beginning 1227' from DER, 540' right of centerline, up to 68' AGL/1190' MSL. Feed drop 1901' from DER, 774' right of centerline, 84' AGL/1204' MSL. **Rwy 24**, sign 54' from DER, 253' left of centerline, 13' AGL/1083' MSL. Sign 57' from DER, 245' right of centerline, up to 15' AGL/1085' MSL. Trees beginning 177' from DER, 495' right of centerline, up to 44' AGL/1114' MSL. **Rwy 30**, trees beginning 71' from DER, left and right of centerline, up to 67' AGL/1167' MSL. Poles beginning 211' from DER, 421' left of centerline, up to 45' AGL/1135' MSL. Poles beginning 878' from DER, 54' right of centerline, up to 39' AGL/1139' MSL.

FORT LEONARD WOOD, MO

WAYNESVILLE-ST ROBERT RGNL FORNEY
FIELD (TBN)

ORIG 11349 (FAA)

NOTE: **Rwy 14**, obstruction lights beginning 206' from DER, 261' right of centerline, up to 21' AGL/1172' MSL. Rising terrain beginning 217' from DER, 490' left of centerline, up to 1169' MSL. Obstruction light on localizer antenna 273' from DER, on centerline, 9' AGL/1164' MSL. Obstruction light on fence, 383' from DER, 239' left of centerline, 11' AGL/1170' MSL. Vehicles on roadway beginning 439' from DER, left and right of centerline, up to 17' AGL/1171' MSL. **Rwy 32**, fence 26' from DER, 483' right of centerline, up to 9' AGL/1170' MSL. Pole 227' from DER, 451' right of centerline, 26' AGL/1167' MSL. Trees beginning 379' from DER, 425' right of centerline, up to 20' AGL/1179' MSL.

FORT MADISON, IA

FORT MADISON MUNI (FSW)
ORIG 10266 (FAA)

NOTE: **Rwy 17**, trees beginning at DER, 349' right of centerline, up to 125' AGL/844' MSL. Trees beginning at DER, 164' left of centerline, up to 125' AGL/844' MSL. **Rwy 35**, trees beginning 659' from DER, 304' left of centerline, up to 125' AGL/824' MSL. Trees beginning 3107' from DER, 1184' right of centerline, up to 125' AGL/814' MSL.

FREDERICKTOWN, MO

A. PAUL VANCE FREDERICKTOWN
RGNL(H88)
ORIG 85213 (FAA)

TAKE-OFF MINIMUMS: **Rwys 1, 19**, 400-2 or std. with a min. climb of 275' per NM to 1300.

FULTON, MO

ELTON HENSLEY MEMORIAL (FTT)
AMDT 1 09071 (FAA)

DEPARTURE PROCEDURE: **Rwy 36**, Climb heading 001° to 1400 before turning right.

NOTE: **Rwy 18**, tree 1506' from DER, 809' right of centerline, 100' AGL/989' MSL. **Rwy 36**, tree 1809' from DER, 272' right of centerline, 46' AGL/923' MSL.

GREENFIELD, IA

GREENFIELD MUNI (GFZ)
ORIG 11013 (FAA)

NOTE: **Rwy 7**, terrain 26' from DER, 252' left of centerline, up to 1367' MSL. **Rwy 14**, trees beginning 431' from DER, 327' left of centerline, up to 100' AGL/1479' MSL. Vehicle on road 297' from DER, 60' right of centerline, 15' AGL/1374' MSL. **Rwy 25**, terrain, trees and fence beginning 96' from DER, 160' left of centerline, up to 38' AGL/1397' MSL. **Rwy 32**, tree 906' from DER, 292' left of centerline, 100' AGL/1439' MSL.

GRINNELL, IA

GRINNELL RGNL (GGI)
AMDT 1 08157 (FAA)

NOTE: **Rwy 13**, road plus vehicles beginning 164' from departure end of runway, 497' left of centerline, 15' AGL/1024' MSL. Trees beginning 958' from departure end of runway, 324' left of centerline, up to 50' AGL/1059' MSL. **Rwy 31**, tree 681' from departure end of runway, 589' right of centerline, up to 75' AGL/1075' MSL. Tree 716' from departure end of runway, 610' left of centerline, up to 50' AGL/1009' MSL. Road plus vehicle beginning 22' from departure end of runway, 215' right of centerline, 15' AGL/995' MSL. Multiple poles and buildings beginning 492' from departure end of runway, 249' right of centerline, up to 23' AGL/1032' MSL.

GUTHRIE CENTER, IA

GUTHRIE COUNTY RGNL (GCT)
ORIG 10126 (FAA)

NOTE: **Rwy 18**, vehicle on road 599' from DER, 9' left of centerline, 15' AGL/1234' MSL. Tree beginning 1083' from DER, 432' right of centerline, 100' AGL/1319' MSL. Tree beginning 1147' from DER, 141' left of center, 100' AGL/1319' MSL. **Rwy 36**, tree beginning 1609' from DER, 432' right of centerline, 100' AGL/1319' MSL. Tree beginning 604' from DER, 240' left of centerline, 100' AGL/1319' MSL.

HAMPTON, IA

HAMPTON MUNI (HPT)
AMDT 3A 11069 (FAA)

TAKE-OFF MINIMUMS: **Rwy 17**, 400-1. **Rwy 35**, 300-1 or std. w/min. climb of 471' per NM to 1500.

NOTE: **Rwy 17**, tower 238' from DER, 536' left of centerline, 30' AGL/1188' MSL.

HANNIBAL, MO

HANNIBAL RGNL (HAE)
ORIG 09127 (FAA)

NOTE: **Rwy 17**, trees beginning 15' from DER, 205' right of centerline, up to 80' AGL/819' MSL. **Rwy 35**, trees beginning 377' from DER, 90' left of centerline, up to 60' AGL/809' MSL. Trees beginning 1870' from DER, 103' right of centerline, up to 66' AGL/814' MSL.

12152

TAKE-OFF MINIMUMS AND (OBSTACLE) DEPARTURE PROCEDURES

NC-3

TAKE-OFF MINIMUMS AND (OBSTACLE) DEPARTURE PROCEDURES

12152

HARLAN, IA

HARLAN MUNI (HNR)

AMDT 1 10266 (FAA)

TAKE-OFF MINIMUMS: **Rwy 3, 21**, NA-Environmental.**Rwy 15**, 300-1 $\frac{1}{4}$ or std. w/ min. climb of 250' per NM to 1600.

NOTE: **Rwy 15**, vehicle on road beginning 207' from DER, left and right of centerline, up to 17' AGL/1216' MSL. Pole and parked plane beginning 151' from DER, 361' left of centerline, 50' AGL/1210' MSL. Power pole 989' from DER, 9' right of centerline, 50' AGL/1249' MSL. Trees beginning 3253' from DER, 624' left of centerline, up to 100' AGL/1439' MSL. **Rwy 33**, antenna 1' from DER, 267' left of centerline, 10' AGL/1250' MSL. Rising terrain, trees, and posts beginning 23' from DER, left and right of centerline, up to 92' AGL/1333' MSL. Fence beginning 88' from DER, 73' right of centerline, up to 26' AGL/1286' MSL. Vehicle on road beginning 84' from DER, left and right of centerline, up to 15' AGL/1379' MSL.

HARRISONVILLE, MO

LAWRENCE SMITH MEMORIAL (LRY)

ORIG 08045 (FAA)

TAKE-OFF MINIMUMS: **Rwy 35**, 300-1 $\frac{1}{4}$ or std. w/ min climb of 346' per NM to 1300.

NOTES: **Rwy 17**, vehicle on road 660' from departure end of runway, 618' left of centerline, 15' AGL/914' MSL.

Tree 26' from departure end of runway, 448' left of centerline, 10' AGL/889' MSL. Multiple trees beginning

178' from departure end of runway, on centerline, up to

88' AGL/937' MSL. Multiple trees beginning 1271' from

departure end of runway, 277' left of centerline, up to

53' AGL/932' MSL. Multiple trees beginning 1722' from

departure end of runway, 500' right of centerline, up to

100' AGL/959' MSL. **Rwy 35**, Multiple trees beginning

69' from departure end of runway, 439' left of centerline,

up to 57' AGL/984' MSL. Vehicle on road 620' from

departure end of runway, on centerline, up to 15' AGL/

934' MSL. Multiple trees beginning 572' from departure

end of runway, 130' right of centerline, up to 69' AGL/987'

MSL. Multiple trees beginning 2132' from departure end

of runway, 103' right of centerline, up to 85' AGL/1034'

MSL. Multiple trees beginning 3635' from departure end

of runway, 877' right of centerline up to 100' AGL/1059'

MSL. Multiple trees beginning 3819' from departure end

of runway, 280' left of centerline, up to 100' AGL/1099'

MSL. Trees beginning 5443' from departure end of

runway, 1738' left of centerline, up to 100' AGL/1079'

MSL. Tank 1.5 NM from departure end of runway, 1141'

right of centerline, 203' AGL/1153' MSL.

HIGGINSVILLE, MO

HIGGINSVILLE INDUSTRIAL MUNI (HIG)

ORIG 06271 (FAA)

NOTE: **Rwy 16**, multiple trees beginning 87' from departure end of runway, 389' right of centerline, up to 100' AGL/879' MSL. Multiple trees beginning 472' from departure end of runway, 313' left of centerline, up to 100' AGL/889' MSL. Multiple trees beginning 626' from departure end of runway, 472' left of centerline, up to 75' AGL/854' MSL. **Rwy 34**, multiple trees beginning 23' from departure end of runway, 155' right of centerline, up to 100' AGL/949' MSL. Multiple trees beginning 1860' from departure end of runway, 76' right of centerline, up to 100' AGL/919' MSL. Road 644' from departure end of runway, on centerline, 15' AGL/864' MSL.

12152

INDEPENDENCE, IA

INDEPENDENCE MUNI (IIB)

AMDT 5 12040 (FAA)

DEPARTURE PROCEDURE: **Rwy 18**, climbing right turn heading 190° and CID R-338 to 3300 before proceeding on course. **Rwy 36**, climb heading 359° to 2200 before proceeding on course.

IOWA CITY, IA

IOWA CITY MUNI (IOW)

AMDT 3A 08185 (FAA)

TAKE-OFF MINIMUMS: **Rwy 25**, 200-1 $\frac{1}{4}$ or std. w/ min. climb of 269' per NM to 900. **Rwy 30**, 300-2 or std. w/ min. climb of 374' per NM to 1100.

DEPARTURE PROCEDURE: **Rwy 7**, climbing right turn heading 180° and IOW VORTAC R-057 to IOW VORTAC.

NOTE: **Rwy 7**, multiple trees beginning 145' from departure end of runway, 199' left of centerline up to 38' AGL/802' MSL. Road, multiple trees and poles beginning 155' from departure end of runway 4' right of centerline, up to 16' AGL/721' MSL. **Rwy 12**, multiple trees beginning 227' from departure end of runway, 270' right of centerline up to 20' AGL/737' MSL. Light pole 850' from departure end of runway, 142' right of centerline, 33' AGL/681' MSL. Railroad 1002' from departure end of runway, 6' left of centerline, 25' AGL/675' MSL. Road 587' from departure end of runway, 303' left of centerline, 15' AGL/666' MSL. Obstruction light on building 861' from departure end of runway, 315' left of centerline, 32' AGL/682' MSL. Trees beginning 255' from departure end of runway, 464' left of centerline, 50' AGL/699' MSL. **Rwy 25**, tree 1753' from departure end of runway, 368' right of centerline, 77' AGL/775' MSL. Sign 2233' from departure end of runway, 418' right of centerline, 25' AGL/764' MSL. Obstruction light pole 1723' from departure end of runway, 435' right of centerline, 32' AGL/750' MSL. Building 3654' from departure end of runway, 1034' right of centerline, 31' AGL/768' MSL. Fence 1897' from departure end of runway, 423' left of centerline, 15' AGL/734' MSL. Multiple trees, signs, and obstruction light poles, beginning 2696' from departure end of runway, 343' left of centerline up to 51' AGL/843' MSL. Power pole 2464' from departure end of runway, 248' right of centerline, 39' AGL/780' MSL. **Rwy 30**, Multiple trees, obstruction light poles, and towers beginning 1115' from departure end of runway, 12' right of centerline up to 258' AGL/936' MSL. Multiple trees and antenna beginning 1662' from departure end of runway, 195' left of centerline, up to 44' AGL/786' MSL.

31 MAY 2012 to 28 JUN 2012

31 MAY 2012 to 28 JUN 2012

TAKE-OFF MINIMUMS AND (OBSTACLE) DEPARTURE PROCEDURES

NC-3


TAKE-OFF MINIMUMS AND (OBSTACLE) DEPARTURE PROCEDURES


12152

IOWA FALLS, IA

IOWA FALLS MUNI (IFA)
ORIG 09071 (FAA)

NOTE: **Rwy 13**, multiple trees and buildings beginning 1092' from DER, 349' left of centerline, up to 100' AGL/1239' MSL. **Rwy 31**, multiple trees and buildings beginning 1023' from DER, 750' left of centerline, up to 100' AGL/1259' MSL.

JEFFERSON, IA

JEFFERSON MUNI (EFW)
AMDT 3 10266 (FAA)

TAKE-OFF MINIMUMS: **Rwys 18, 36**, NA-Environmental. **Rwy 32**, 500-2 or std. w/ min. climb of 430' per NM to 1700.

NOTE: **Rwy 14**, fence 167' from DER, 253' left of centerline, 8' AGL/1048' MSL. Vehicle on road 755' from DER, 461' right of centerline, up to 15' AGL/1074' MSL. **Rwy 32**, rising terrain beginning 16' from DER, 326' left of centerline, up to 1049' MSL. Trees beginning 95' from DER, left and right of centerline, up to 77' AGL/1127' MSL. Vehicle on road beginning 294' from DER, 59' right of centerline, up to 15' AGL/1059' MSL. Antenna 968' from DER, 706' left of centerline, 58' AGL/1108' MSL. Grain elevator 8342' from DER, 1729' left of centerline, 280' AGL/1429' MSL.

JEFFERSON CITY, MO

JEFFERSON CITY MEMORIAL (JEF)
AMDT 7 07354 (FAA)

TAKE-OFF MINIMUMS: **Rwy 9**, 300-1%. **Rwy 27**, 300-1½ or std. w/ min. climb of 337' per NM to 900.

DEPARTURE PROCEDURE: **Rwy 9**, climb heading 088° to 1200 before proceeding on course. **Rwy 12**, climb heading 120° to 1100 before proceeding on course. **Rwy 27**, climb heading 268° to 1100 before proceeding on course. **Rwy 30**, climb heading 300° to 1000 before proceeding on course.

NOTE: **Rwy 9**, glideslope antenna 1101' from departure end of runway, 598' right of centerline, 31' AGL/577' MSL. Trees beginning 4022' from departure end of runway, 1487' left to 1110' right of centerline, up to 100' AGL/839' MSL. **Rwy 12**, trees beginning 2134' from departure end of runway, 980' left of centerline, up to 56' AGL/603' MSL. **Rwy 27**, hangar and trees beginning 600' from departure end of runway, 199' right of centerline, up to 100' AGL/739' MSL. Antenna on bridge, tower, water treatment plant, and trees beginning 94' from departure end of runway, 113' left of centerline, up to 100' AGL/759' MSL. **Rwy 30**, light on DME, sign, tower, poles, and trees beginning 617' from departure end of runway, 216' left of centerline, up to 109' AGL/649' MSL. Vehicles on road, pole and trees beginning 397' from departure end of runway, 265' right of centerline, up to 133' AGL/681' MSL.

JOPLIN, MO

JOPLIN RGNL (JLN)
AMDT 4 05244 (FAA)

TAKE-OFF MINIMUMS: **Rwy 18**, std. with a min. climb of 328' per NM to 2500, or 1500-3 for climb in visual conditions. **Rwy 23**, std. with a min. climb of 340' per NM to 2500, or 1500-3 for climb in visual conditions.

DEPARTURE PROCEDURE: **Rwy 13**, climb via heading 134° to 2500 before proceeding on course. **Rwy 18**, climb via heading 178° to 2500, or for climb in visual conditions: cross departure end of runway at or above 2300 before proceeding on course. **Rwy 23**, climb via heading 226° to 2500, or for climb in visual conditions: cross departure end of runway at or above 2300 before proceeding on course.

NOTE: **Rwy 5**, multiple trees beginning 1250' from departure end of runway, 277' left to 223' right of centerline, up to 60' AGL/1050' MSL. **Rwy 13**, multiple trees beginning 475' from departure end of runway, 693' left to 1726' right of centerline, up to 100' AGL/1189' MSL. **Rwy 18**, obstruction light 1161' from departure end of runway, 265' right of centerline, 32' AGL/1007' MSL. **Rwy 23**, multiple trees beginning 623' from departure end of runway, 267' left of 187' right of centerline, up to 70' AGL/1032' MSL. **Rwy 31**, multiple trees beginning 1141' from departure end of runway, 730' left of centerline, up to 60' AGL/994' MSL.

KAISER/LAKE OZARK, MO

LEE C. FINE MEMORIAL (AIZ)
AMDT 1 06271 (FAA)

NOTE: **Rwy 3**, multiple trees beginning 12' from departure end of runway, 420' left of centerline, up to 37' AGL/906' MSL. Tree 338' from departure end of runway, 481' right of centerline, 44' AGL/913' MSL. **Rwy 21**, multiple trees beginning 266' from departure end of runway, 395' left of centerline, up to 72' AGL/935' MSL. Multiple trees beginning 235' from departure end of runway, 468' right of centerline, up to 82' AGL/945' MSL.

31 MAY 2012 to 28 JUN 2012

31 MAY 2012 to 28 JUN 2012

12152


TAKE-OFF MINIMUMS AND (OBSTACLE) DEPARTURE PROCEDURES


NC-3

TAKE-OFF MINIMUMS AND (OBSTACLE) DEPARTURE PROCEDURES

12152

KANSAS CITY, MO

CHARLES B. WHEELER DOWNTOWN (MKC)
AMDT 3 11013 (FAA)

TAKE-OFF MINIMUMS: **Rwy 1**, 400-2½ or std. w/ min. climb of 307' per NM to 1100. **Rwy 3**, 400-2½ or std. w/ min. climb of 231' per NM to 1300. **Rwy 19**, std. w/ min. climb of 400' per NM to 2500. **Rwy 21**, std. w/ min. climb of 238' per NM to 1700.

DEPARTURE PROCEDURE: **Rwy 1**, climb heading 008° to 2000 before proceeding on course. **Rwy 3**, climb heading 033° to 1900 before proceeding on course. **Rwy 19**, climb heading 215° to 2500 before proceeding on course. **Rwy 21**, climb heading 213° to 2300 before proceeding on course.

NOTE: **Rwy 1**, roads, trees, buildings and towers beginning at DER, 135' left of centerline, up to 80' AGL/997' MSL. Boats beginning 150' from DER, 527' left of centerline, up to 35' AGL/774' MSL. Obstruction light on elevator 3987' from DER, 1269' right of centerline, 172' AGL/912' MSL. Buildings beginning 4046' from DER, 1269' right of centerline, up to 140' AGL/899' MSL. Tree 1.6 NM from DER, 1171' right of centerline, 80' AGL/997' MSL. **Rwy 3**, roads, railroads, poles, buildings, and obstruction lights beginning 19' from DER, left and right of centerline, up to 125' AGL/865' MSL. Antenna on building 155' from DER, 261' left of centerline, 15' AGL/755' MSL. Trees beginning 742' from DER, 348' left of centerline, up to 80' AGL/797' MSL. Towers beginning 1846' from DER, 478' left of centerline, up to 149' AGL/853' MSL. Cranes beginning 2.1 NM from DER, 2840' right of centerline, up to 296' AGL/1110' MSL. Obstruction light on elevator 829' from DER, 492' right of centerline, 125' AGL/865' MSL. **Rwy 19**, roads, trees, towers, buildings and obstruction lights beginning 199' from DER, 420' left of centerline, up to 291' AGL/1251' MSL. Stack 3200' from DER, 420' left of centerline, 168' AGL/908' MSL. Tower 2.5 NM from DER, 3165' left of centerline, 1168' AGL/2049' MSL. Roads, trees, poles, buildings, and obstruction lights beginning 102' from DER, 55' right of centerline, up to 184' AGL/933' MSL. **Rwy 21**, trees, cranes, and obstruction lights beginning 1490' from DER, 20' left of centerline, up to 148' AGL/896' MSL. Obstruction light on elevator 5178' from DER, 803' left of centerline, 148' AGL/896' MSL. Stack 1.3 NM from DER, 589' left of centerline, 198' AGL/948' MSL. Fence, roads, bridges, levees, trees, poles, cranes, buildings, and towers beginning 204' from DER, 2' right of centerline, up to 118' AGL/858' MSL.

KANSAS CITY INTL (MCI)

ORIG 05300 (FAA)

NOTE: **Rwy 1R**, tree 1653' from departure end of runway, 661' left of centerline, 60' AGL/1019' MSL. **Rwy 9**, tree 4544' from departure end of runway, 638' right of centerline, 100' AGL/1159' MSL. **Rwy 27**, trees beginning 1066' from departure end of runway, across centerline, up to 86' AGL/1095' MSL.

KENNETT, MO

KENNETT MEMORIAL (TKX)

AMDT 1 05356 (FAA)

NOTE: **Rwy 2**, tree 1869' from departure end of runway, 637' right of centerline, 78' AGL/338' MSL. Tree 1919' from departure end of runway, 648' right of centerline, 78' AGL/337' MSL. **Rwy 20**, tree 2018' from departure end of runway, 75' left of centerline, 65' AGL/320' MSL. Tree 1938' from departure end of runway, 297' left of centerline, 69' AGL/328' MSL. Dead tree 1057' from departure end of runway, 324' right of centerline, 46' AGL/300' MSL. Treeline 1083' from departure end of runway, 408' right of centerline, 44' AGL/298' MSL. Treeline 1085' from departure end of runway, 420' right of centerline, 45' AGL/299' MSL.

KEOKUK, IA

KEOKUK MUNI (EOK)

ORIG 06271 (FAA)

NOTE: **Rwy 8**, tree 79' from departure end of runway, 513' right of centerline, 26' AGL/695' MSL. Fence and trees 102' from departure end of runway, 298' left of centerline, 37' AGL/706' MSL. **Rwy 14**, multiple trees 200' from departure end of runway, 156' left of centerline, 65' AGL/704' MSL. Multiple trees 172' from departure end of runway, 92' right of centerline, 70' AGL/739' MSL. **Rwy 26**, tree 298' from departure end of runway, 496' left of centerline, 56' AGL/695' MSL. Tank and trees 351' from departure end of runway, 508' right of centerline, 111' AGL/790' MSL. **Rwy 32**, multiple trees 303' from departure end of runway, 243' left of centerline 56' AGL/725' MSL. Hanger and tree 281' from departure end of runway, 442' right of centerline, 61' AGL/730' MSL.

KIRKSVILLE, MO

KIRKSVILLE RGNL (IRK)

ORIG 07186 (FAA)

TAKE-OFF MINIMUMS: **Rwys 9, 27**, NA-turf runways. NOTE: **Rwy 18**, multiple trees beginning 986' from departure end of runway, 278' left of centerline, up to 44' AGL/1023' MSL. **Rwy 36**, multiple trees and poles beginning 935' from departure end of runway, 179' right of centerline, up to 54' AGL/1033' MSL. Obstruction light on DME antenna 649' from departure end of runway, 269' right of centerline, 7' AGL/986' MSL. Truck on road beginning 1081' from departure end of runway, 785' right of centerline, 17' AGL/996' MSL. Tree 326' from departure end of runway, 473' left of centerline, 17' AGL/976' MSL.

KNOXVILLE, IA

KNOXVILLE (OXV)

ORIG 10098 (FAA)

NOTE: **Rwy 15**, vehicle and road beginning 49' from DER, 295' left of centerline, up to 15' AGL/937' MSL. Trees beginning 387' from DER, 389' right of centerline, up to 100' AGL/1029' MSL. Poles beginning 407' from DER, 224' left of centerline, up to 61' AGL/962' MSL. Buildings beginning 506' from DER, 406' right of centerline, up to 28' AGL/948' MSL. Trees beginning 685' from DER, 396' left of centerline, up to 100' AGL/1029' MSL. **Rwy 33**, trees beginning 33' from DER, 440' left of centerline, up to 73' AGL/963' MSL. Trees beginning 39' from DER, 465' right of centerline, up to 100' AGL/1029' MSL. Fence beginning 86' from DER, 350' right of centerline, up to 9' AGL/930' MSL. Vehicle and road beginning 158' from DER, 490' right of centerline, up to 15' AGL/931' MSL.

12152

TAKE-OFF MINIMUMS AND (OBSTACLE) DEPARTURE PROCEDURES

TAKE-OFF MINIMUMS AND (OBSTACLE) DEPARTURE PROCEDURES

12152

LAMAR, MO

LAMAR MUNI (LLU)

ORIG 08101 (FAA)

NOTE: **Rwy 3**, Road/Vehicle 201' from departure end of runway, 512' left of centerline, 15' AGL/1014' MSL. Road/Vehicle 385' from departure end of runway, 158' left of centerline, 15' AGL/1014' MSL. School 534' from departure end of runway, 386' right of centerline, 16' AGL/1015' MSL. **Rwy 21**, Road/Vehicle 274' from departure end of runway, 387' left of centerline, 15' AGL/1024' MSL.

LAMONI, IA

LAMONI MUNI (LWVD)

ORIG 11293 (FAA)

DEPARTURE PROCEDURE: **Rwy 18**, climb heading 177° to 1600 before turning right.

NOTE: **Rwy 36**, trees beginning 1009' from DER, 267' right of centerline, up to 100' AGL/1200' MSL.

LE MARS, IA

LE MARS MUNI (LRJ)

AMDT 1A 07283 (FAA)

DEPARTURE PROCEDURE: **Rwy 18**, turn right, heading 270°, climb to 3500 before turning on course.

Rwy 36, climb to 3500 before turning on course.

NOTE: **Rwy 18**, vehicle on road, 293' from departure end of runway, 292' left of centerline, 17' AGL/1216' MSL.

LEBANON, MO

FLOYD W JONES LEBANON (LBO)

ORIG 10154 (FAA)

TAKE-OFF MINIMUMS: **Rwy 36**, 300-1¼ or std. w/min. climb of 245' per NM to 1600', or alternatively, with standard take-off minimums and a normal 200' per NM climb gradient, take-off must occur no later than 2000' prior to DER.

NOTE: **Rwy 18**, multiple trees beginning 49' from DER, 388' right of centerline, up to 88' AGL/1398' MSL. Pole 440' from DER, 409' right of centerline, up to 44' AGL/1334' MSL. **Rwy 36**, multiple poles and trees beginning 151' from DER, 366' left of centerline, up to 2' AGL/1372' MSL. Multiple trees beginning 679' from DER, 504' right of centerline, up to 67' AGL/1367' MSL. Tower 5528' from DER, 186' right of centerline, up to 182' AGL/1472' MSL.

LEE'S SUMMIT, MO

LEE'S SUMMIT MUNI (LXT)

ORIG 07242 (FAA)

NOTE: **Rwy 18**, multiple trees beginning 13' from departure end of runway, 116' left of centerline, up to 63' AGL/1062' MSL. **Rwy 11**, building 140' from departure end of runway, 388' left of centerline, 24' AGL/1023' MSL. Multiple buildings 169' from departure end of runway, 334' right of centerline, 26' AGL/1019' MSL. Multiple trees beginning 233' from departure end of runway, 182' left of centerline, up to 40' AGL/1039' MSL. **Rwy 29**, multiple antennas and poles 402' from departure end of runway, 408' right of centerline, up to 35' AGL/1024' MSL. Tank 344' from departure end of runway, 419' right of centerline, 13' AGL/1002' MSL. Multiple trees beginning 648' from departure end of runway, 73' left of centerline, up to 67' AGL/1036' MSL. **Rwy 36**, pole 77' from departure end of runway, 316' right of centerline, 11' AGL/1010' MSL. Post 39' from departure end of runway, 461' right of centerline, 8' AGL/1007' MSL. Multiple trees beginning 206' from departure end of runway, 241' right of centerline, up to 39' AGL/1028' MSL. Multiple trees beginning 241' from departure end of runway, 93' left of centerline, up to 36' AGL/1015' MSL.

MALDEN, MO

MALDEN RGNL (MAW)

ORIG 09295 (FAA)

DEPARTURE PROCEDURE: **Rwy 32**, climb heading 317° to 900 before turning left.

NOTE: **Rwy 14**, trees 1619' from DER, 856' right of centerline, 100' AGL/394' MSL. **Rwy 18**, trees 2744' from DER, 996' left of centerline, 100' AGL/394' MSL. Trees 2766' from DER, 1042' right of centerline, 100' AGL/394' MSL. **Rwy 36**, trees 2841' from DER, 1157' left of centerline, 100' AGL/399' MSL.

MAPLETON, IA

JAMES G. WHITING MEMORIAL FIELD (MEY)

AMDT 1 10042 (FAA)

TAKE-OFF MINIMUMS: **Rwy 2**, 400-2¼ or std. w/min. climb of 417' per NM to 1700. **Rwy 20**, 500-2¼ or std. w/a min. climb of 249' per NM to 1700.

DEPARTURE PROCEDURE: **Rwy 2**, climb heading 019° to 1700 before turning left. **Rwy 20**, climb heading 199° to 1700 before turning left.

NOTE: **Rwy 2**, tree 5817' from DER, 748' left of centerline, 100' AGL/1419' MSL.

MAQUOKETA, IA

MAQUOKETA MUNI (OQW)

AMDT 1 10154 (FAA)

NOTE: **Rwy 15**, terrain beginning 175' from DER, 59' right of centerline, up to 824' MSL. Trees beginning 2209' from DER, 222' right of centerline, up to 50' AGL/889' MSL. Terrain beginning 94' from DER, 70' left of centerline, up to 745' MSL. **Rwy 33**, multiple power lines beginning 992' from DER, left and right of centerline, up to 50' AGL/829' MSL. Trees beginning 1423' from DER, 607' right of centerline, up to 50' AGL/909' MSL. Terrain beginning 1030' from DER, 655' right of centerline, up to 909' MSL.

31 MAY 2012 to 28 JUN 2012

31 MAY 2012 to 28 JUN 2012

12152

TAKE-OFF MINIMUMS AND (OBSTACLE) DEPARTURE PROCEDURES

NC-3

TAKE-OFF MINIMUMS AND (OBSTACLE) DEPARTURE PROCEDURES

12152

MARSHALL, MO

MARSHALL MEMORIAL MUNI (MHL)

ORIG-A 12040 (FAA)

TAKE-OFF MINIMUMS: **Rwy 18**, std. with a min. climb of 284' per NM to 2100, or 1300-3 for climb in visual conditions. **Rwy 36**, std. with a min. climb of 263' per NM to 1500, or 1300-3 for climb in visual conditions.

DEPARTURE PROCEDURE: **Rwys 18, 36**, for climb in visual conditions: Cross Marshall Memorial Muni airport at or above 1900 MSL before proceeding on course.

NOTE: **Rwy 18**, antenna on bldg 277' from DER, 573' left of centerline, 42' AGL/811' MSL. Light pole 230' from DER, 447' left of centerline, 32' AGL/801' MSL. **Rwy 36**, trees beginning 84' from DER, 15' right and left of centerline, up to 121' AGL/892' MSL. Poles beginning 24' from DER, 357' left and right of centerline, up to 22' AGL/446' MSL.

MARSHALLTOWN, IA

MARSHALLTOWN MUNI (MIW)

ORIG 10266 (FAA)

NOTE: **Rwy 13**, vehicle on roadway beginning 245' from DER, 364' right of centerline, up to 15' AGL/994' MSL. Trees beginning 1789' from DER, right and left of centerline, up to 100' AGL/1079' MSL.

Rwy 18, trees beginning 859' from DER, 208' right of centerline, up to 100' AGL/1069' MSL. **Rwy 36**, trees beginning 911' from DER, right and left of centerline, up to 100' AGL/1089' MSL.

MARYVILLE, MO

NORTHWEST MISSOURI RGNL (EVU)

AMDT 3 09183 (FAA)

TAKE-OFF MINIMUMS: **Rwy 36**, std. w/ min. climb of 260' per NM to 2000 or 1100-2½ for climb in visual conditions.

DEPARTURE PROCEDURE: **Rwy 32**, climb via heading 323° to 1800 before turning right. **Rwy 36**, for climb in visual conditions cross Northwest Missouri Rgnl airport at or above 2100 MSL before proceeding on course.

NOTE: **Rwy 32**, tree 436' from DER, 321' left of centerline, 58' AGL/1156' MSL.

MASON CITY, IA

MASON CITY MUNI (MCW)

ORIG 11181 (FAA)

NOTE: **Rwy 12**, building 1599' from DER, 461' left of centerline, 53' AGL/1233' MSL. Tree 1619' from DER, 722' left of centerline, up to 56' AGL/1245' MSL. Trees beginning 2919' from DER, 1006' left of centerline, up to 100' AGL/1289' MSL. Trees beginning 2900' from DER, 978' right of centerline, up to 100' AGL/1289' MSL. **Rwy 30**, tree 54' from DER, 487' left of centerline, 45' AGL/1254' MSL. Bush 69' from DER, 333' left of centerline, 7' AGL/1216' MSL. Tree 859' from DER, 549' left of centerline, 27' AGL/1236' MSL. Pole 899' from DER, 559' right of centerline, 26' AGL/1235' MSL. Pole 1197' from DER, 354' right of centerline, 27' AGL/1246' MSL. Pole 1218' from DER, 332' right of centerline, 36' AGL/1246' MSL. Tree 1714' from DER, 167' right of centerline, 53' AGL/1272' MSL. Tree 1798' from DER, 57' right of centerline, 53' AGL/1272' MSL. Trees beginning 2042' from DER, 821' right of centerline, up to 100' AGL/1339' MSL. Tree 2364' from DER, 551' right of centerline, 73' AGL/1302' MSL. Obstruction light on building 2434' from DER, 232' right of centerline, 53' AGL/1282' MSL. Tree 2608' from DER, 236' right of centerline, 68' AGL/1297' MSL. Trees beginning 4008' from DER, 1487' left of centerline, up to 100' AGL/1319' MSL. Trees beginning 4421' from DER, 961' left of centerline, up to 100' AGL/1329' MSL.

MEXICO, MO

MEXICO MEMORIAL (MYJ)

ORIG 04050 (FAA)

TAKE-OFF MINIMUMS: **Rwy 24**, std. with a min. climb of 230' per NM to 2200, or 900-2½ for climb in visual conditions. **Rwy 36**, NA, obstacles.

DEPARTURE PROCEDURE: **Rwy 24**, for climb in visual conditions: cross Mexico Memorial Airport at or above 1700.

NOTE: **Rwy 6**, multiple trees and antennas beginning 60' from departure end of runway, left and right of centerline, up to 100' AGL/902' MSL.

MILFORD, IA

FULLER (4D8)

TAKE-OFF MINIMUMS: **Rwys 9, 18, 36**, 300-1. **Rwy 27**, 600-2.

DEPARTURE PROCEDURE: **Rwys 9, 18, 36**, climb runway heading to 2000 before turning.

MOBERLY, MO

OMAR N BRADLEY (MBY)

ORIG 11181 (FAA)

NOTE: **Rwy 5**, trees 310' from DER, 326' left of centerline, 100' AGL/959' MSL. Trees 1244' from DER, 786' left of centerline, 100' AGL/959' MSL.

Rwy 13, multiple trees beginning 1139' from DER, 212' right of centerline, up to 83' AGL/913' MSL. Multiple trees beginning 1515' from DER, 430' left of centerline, up to 91' AGL/921' MSL. **Rwy 23**, vehicle on road, 250' from DER, crossing left to right, 15' AGL/884' MSL. Vehicle on road, 530' from DER, crossing right to left, 15' AGL/884' MSL. Trees 1375' from DER, 146' right of centerline, 100' AGL/959' MSL. **Rwy 31**, vehicle on road, 63' from DER, crossing right to left, 15' AGL/877' MSL. Multiple trees and buildings beginning 145' from DER, 204' right of centerline, up to 77' AGL/937' MSL. Multiple trees beginning 788' from DER, 312' right of centerline, up to 74' AGL/924' MSL. Vehicle on road, 310' from DER, crossing left to right, 15' AGL/871' MSL. Trees 890' from DER, 509' left of centerline, 52' AGL/892' MSL. Building 855' from DER, 296' left of centerline, 22' AGL/888' MSL.

31 MAY 2012 to 28 JUN 2012

31 MAY 2012 to 28 JUN 2012

12152

TAKE-OFF MINIMUMS AND (OBSTACLE) DEPARTURE PROCEDURES

TAKE-OFF MINIMUMS AND (OBSTACLE) DEPARTURE PROCEDURES

12152

MONETT, MO

MONETT MUNI (HFJ)
AMDT 1 10266 (FAA)

NOTE: **Rwy 18**, trees and fence beginning 11' from DER, 437' left of centerline, up to 100' AGL/1389' MSL. Trees beginning 1106' from DER, 292' right of centerline, up to 100' AGL/1389' MSL. **Rwy 36**, multiple antennas, buildings, trees, light poles and hangars beginning 24' from DER, 399' right of centerline, up to 100' AGL/1409' MSL. Tree 1005' from DER, 520' left of centerline, 63' AGL/1353' MSL.

MONROE CITY, MO

CAPT. BEN SMITH AIRFIELD (K52)
ORIG 10322 (FAA)

NOTE: **Rwy 9**, tree 2845' from DER, 875' left of centerline, 100' AGL/844' MSL. Tree 607' from DER, on centerline, 80' AGL/819' MSL. **Rwy 27**, tree 34' from DER, 466' right of centerline, 100' AGL/839' MSL. Vehicle on road beginning 454' from DER, 571' right of centerline, 15' AGL/754' MSL.

MONTICELLO, IA

MONTICELLO RGNL (MXO)
AMDT 4 01361 (FAA)

NOTE: **Rwy 15**, 969' MSL tree 2849' from departure end of runway, 60' right of centerline.

MONTICELLO, MO

LEWIS COUNTY RGNL (6M6)
ORIG 06271 (FAA)

NOTE: **Rwy 36**, tree 2609' from departure end of runway, 980' right of centerline, 45' AGL/741' MSL.

MOSBY, MO

MIDWEST NATIONAL AIR CENTER (GPH)
AMDT 1 07354 (FAA)

NOTE: **Rwy 18**, multiple trees beginning 1562' from departure end of runway, 16' right of centerline, up to 100' AGL/861' MSL. Multiple trees beginning 1278' from departure end of runway, 46' left of centerline, up to 100' AGL/859' MSL. **Rwy 36**, multiple trees beginning 2224' from departure end of runway, 57' right of centerline, up to 100' AGL/889' MSL. Multiple trees beginning 2302' from departure end of runway, 231' left of centerline, up to 100' AGL/916' MSL.

MOUNT PLEASANT, IA

MOUNT PLEASANT MUNI (MPZ)
AMDT 2 10266 (FAA)

TAKE-OFF MINIMUMS: **Rwys 3, 21**, NA-Environmental. **Rwy 33**, 400-2½ or std. w/min. climb of 244' per NM to 1300.

NOTE: **Rwy 15**, equipment 3' from DER, 261' right of centerline, up to 10' AGL/734' MSL. **Rwy 33**, trees beginning 178' from DER, 235' right of centerline, up to 80' AGL/751' MSL. Trees beginning 333' from DER, 209' left of centerline, up to 80' AGL/753' MSL.

MOUNTAIN GROVE, MO

MOUNTAIN GROVE MEMORIAL (1MO)
AMDT 1 10070 (FAA)

TAKE-OFF MINIMUMS: **Rwy 8**, 300-1¼ or std. w/min. climb of 221' per NM to 1700, or alternatively, with standard take-off minimums and a normal 200'/NM climb gradient, take-off must occur no later than 1600' prior to DER.

DEPARTURE PROCEDURE: **Rwy 8**, climb heading 080° to 2100 before turning right.

NOTE: **Rwy 8**, trees beginning 24' from DER, 139' right of centerline, up to 100' AGL/1639' MSL. Trees beginning 37' from DER, 115' left of centerline, up to 100' AGL/1619' MSL. Vehicles on road beginning 217' from DER, on centerline, up to 15' AGL/1514' MSL.

Rwy 26, trees beginning 4' from DER, 64' right of centerline, up to 100' AGL/1579' MSL. Trees beginning 32' from DER, 81' left of centerline, up to 100' AGL/1579' MSL.

MOUNTAIN VIEW, MO

MOUNTAIN VIEW (MNF)
AMDT 4 11069 (FAA)

TAKE-OFF MINIMUMS: **Rwy 28**, std. w/min. climb of 570' per NM to 2100 or 400-2½ with min. climb of 373' per NM to 2100 or 900-2½ for climb in visual conditions.

DEPARTURE PROCEDURE: **Rwy 28**, for climb in visual conditions cross Mountain View Airport at or above 1900 before proceeding on course.

NOTE: **Rwy 10**, vehicle on road 1011' from DER, left to right of centerline, up to 15' AGL/1174' MSL. Stadium lights beginning 762' from DER, 206' left of centerline, up to 100' AGL/1239' MSL. Building 150' from DER, 521' left of centerline, 20' AGL/1159' MSL. Trees beginning 336' from DER, 70' right of centerline, up to 60' AGL/1279' MSL. **Rwy 28**, trees beginning 50' from DER, 126' right of centerline, up to 60' AGL/1239' MSL. Powerlines beginning 858' from DER, 208' right of centerline, up to 100' AGL/1299' MSL. Trees beginning 191' from DER, 369' left of centerline, up to 60' AGL/1339' MSL. Trees beginning 2043' from DER, 666' right of centerline, up to 60' AGL/1379' MSL. Tower 1.7 NM from DER, 2174' left of centerline, 215' AGL/1531' MSL.

MUSCATINE, IA

MUSCATINE MUNI (MUT)

DEPARTURE PROCEDURE: **Rwys 6, 24, 30**, climb runway heading to 2300 before proceeding on course. **Rwy 12**, climbing left turn to 2300 via DDD R-070 before proceeding on course.

NEOSHO, MO

NEOSHO HUGH ROBINSON (EOS)
AMDT 1 11237 (FAA)

NOTE: **Rwy 1**, trees beginning 89' from DER, 431' left of centerline, up to 120' AGL/1339' MSL. Trees and power poles beginning 584' from DER, 166' right of centerline, up to 120' AGL/1283' MSL. **Rwy 19**, multiple trees and towers beginning 142' from DER, 465' right of centerline, up to 183' AGL/1403' MSL. Vehicles on road beginning 318' from DER, left and right of centerline, up to 17' AGL/1276' MSL.

12152

TAKE-OFF MINIMUMS AND (OBSTACLE) DEPARTURE PROCEDURES

TAKE-OFF MINIMUMS AND (OBSTACLE) DEPARTURE PROCEDURES

12152

NEVADA, MO

NEVADA MUNI (NVD)

ORIG 10266 (FAA)

TAKE-OFF MINIMUMS: **Rwys 13, 31**, NA-Environmental.NOTE: **Rwy 2**, trees beginning 2000' from DER, left and right of centerline, up to 56' AGL/945' MSL.

NEW MADRID, MO

COUNTY MEMORIAL (EIW)

AMDT 1 83132 (FAA)

DEPARTURE PROCEDURE: **Rwys 18, 36**, east departures (010°CW 170°) climb to 1200 on runway heading before proceeding on course.

NEWTON, IA

NEWTON MUNI (TNU)

ORIG 07074 (FAA)

NOTE: **Rwy 14**, truck on road 31 12' from departure end of runway, 1243' right of centerline, 15' AGL/964' MSL, tree 7519' from departure end of runway, multiple trees beginning 2996' from departure end of runway, 1200' left of centerline, up to 100' AGL/1059' MSL. **Rwy 32**, trees 10' from departure end of runway, 437' left of centerline, 30' AGL/989' MSL, sign 126' from departure end of runway, 490' right of centerline, 8' AGL/967' MSL, truck on road 302' from departure end of runway, 513' right of centerline, 17' AGL/976' MSL, multiple trees beginning 531' from departure end of runway, 439' right of centerline, up to 32' AGL/991' MSL.

OELWEIN, IA

OELWEIN MUNI (OLZ)

TAKE-OFF MINIMUMS: **Rwys 18, 36**, NA - environmental.DEPARTURE PROCEDURE: **Rwy 13**, climb heading 133° to 2100 before turning left. **Rwy 31**, climb heading 313° to 1500 before turning right.NOTE: **Rwy 13**, rising terrain beginning 42' from DER, left and right of centerline, up to 1079' MSL. Trees 1972' from DER, 32' right of centerline, up to 100' AGL/1149' MSL. **Rwy 31**, vehicle on road 357' from DER, left and right of centerline, up to 15' AGL/1094' MSL. Poles beginning 1075' from DER, 299' right of centerline, up to 30' AGL/1109' MSL.

ORANGE CITY, IA

ORANGE CITY MUNI (ORC)

ORIG 90291 (FAA)

TAKE-OFF MINIMUMS: **Rwy 34**, 300-1.

OSAGE BEACH, MO

GRAND GLAIZE-OSAGE BEACH (K15)

AMDT 1 90039 (FAA)

DEPARTURE PROCEDURE: **Rwys 14, 32**, maintain runway heading to 1200 before turning on course.

OSCEOLA, IA

OSCEOLA MUNI (I75)

ORIG 11349 (FAA)

NOTE: **Rwy 18**, navaid and road beginning 40' from DER, 49' left of centerline, up to 12' AGL/1131' MSL. Navaid, trees, and road beginning 12' from DER, 3' right of centerline, up to 13' AGL/1132' MSL. **Rwy 36**, trees beginning 794' from DER, 225' left of centerline, up to 57' AGL/1166' MSL. Trees and pole beginning 581' from DER, 415' right of centerline, up to 48' AGL/1157' MSL.

OSKALOOSA, IA

OSKALOOSA MUNI (OOA)

ORIG 09295 (FAA)

NOTE: **Rwy 13**, tree 262' from DER, 477' left of centerline, 100' AGL/939' MSL. **Rwy 31**, windsock 3' from DER, 357' right of centerline, 13' AGL/852' MSL. NAV 39' from DER, 168' right of centerline, 5' AGL/839' MSL. Tree 988' from DER, 525' right of centerline, 100' AGL/949' MSL. Tree 2056' from DER, 609' right of centerline, 59' AGL/893' MSL.

OTTUMWA, IA

OTTUMWA RGNL (OTM)

ORIG-A 11265 (FAA)

TAKE-OFF MINIMUMS: **Rwys 4, 22**, NA-Runway data.NOTE: **Rwy 13**, pole 2026' from DER, 961' left of centerline, 60' AGL/898' MSL. **Rwy 31**, trees beginning 792' from DER, 658' left of centerline, up to 65' AGL/885' MSL. Trees beginning 1571' from DER, 796' right of centerline, up to 100' AGL/919' MSL.

PELLA, IA

PELLA MUNI (PEA)

AMDT 1 08325 (FAA)

NOTE: **Rwy 16**, trees, buildings and ground beginning 9' from departure end of runway, 144' left of centerline, up to 100' AGL/979' MSL. Trees beginning 54' from departure end of runway, 193' right of centerline, up to 100' AGL/959' MSL. **Rwy 34**, trees and poles beginning 838' from departure end of runway, 135' left of centerline, up to 100' AGL/979' MSL. Trees and poles beginning 226' from departure end of runway, 296' right of centerline, up to 100' AGL/989' MSL. Vehicle on road at departure end of runway, 499' right of centerline, 15' AGL/895' MSL.

PERRY, IA

PERRY MUNI (PRO)

ORIG 08269 (FAA)

TAKE-OFF MINIMUMS: **Rwys 4, 22**, NA-Environmental.NOTE: **Rwy 14**, tree 40' from departure end of runway, 180' left of centerline, 13' AGL/1017' MSL. **Rwy 32**, trees beginning 1882' from departure end of runway, 917' left of centerline, up to 100' AGL/1099' MSL. Vehicles beginning 565' from departure end of runway, right to left of centerline, up to 17' AGL/1036' MSL.

31 MAY 2012 to 28 JUN 2012

31 MAY 2012 to 28 JUN 2012

12152

TAKE-OFF MINIMUMS AND (OBSTACLE) DEPARTURE PROCEDURES

NC-3

TAKE-OFF MINIMUMS AND (OBSTACLE) DEPARTURE PROCEDURES

12152

PERRYVILLE, MO

PERRYVILLE MUNI (K02)

ORIG 10210 (FAA)

TAKE-OFF MINIMUMS: **Rwy 2**, 400-2½ or std. w/min. climb of 215' per NM to 900. Alternatively, with standard take-off minimums and normal 200'/NM climb gradient, take-off must occur no later than 1800' prior to DER.

Rwy 20, 400-2½ or std. w/min. climb of 300' per NM to 800.

DEPARTURE PROCEDURE: **Rwy 2**, climb heading 017° to 1200 before proceeding on course. **Rwy 20**, climb heading 197° to 900 before turning left.

NOTE: **Rwy 2**, vehicles on road beginning 3' from DER, 480' right of centerline, up to 15' AGL/384' MSL. Tree 324' from DER, 458' right of centerline, 75' AGL/379' MSL. Tree 412' from DER, 89' left of centerline, 75' AGL/381' MSL. Trees beginning 2.1 NM from DER, 2560' right of centerline, up to 75' AGL/714' MSL. **Rwy 20**, vehicles on road beginning 483' from DER, 577' left of centerline, up to 15' AGL/386' MSL. Trees beginning 1.1 NM from DER, left and right of centerline, up to 75' AGL/714' MSL.

POCAHONTAS, IA

POCAHONTAS MUNI (POH)

AMDT 3 11237 (FAA)

TAKE-OFF MINIMUMS: **Rwys 18, 36**, NA-Environmental.

NOTE: **Rwy 12**, road beginning 499' from DER, 70' left of centerline, 15' AGL/1238' MSL. Poles beginning 324' from DER, 404' left and right of centerline, up to 32' AGL/1252' MSL. Terrain 27' from DER, 486' right of centerline, 1222' MSL.

Rwy 30, tower 1744' from DER, 765' right of centerline, 185' AGL/1375' MSL. Wind sock 122' from DER, 431' right of centerline, 28' AGL/1254' MSL. Tank 85' from DER, 331' right of centerline, 5' AGL/1231' MSL.

POPLAR BLUFF, MO

POPLAR BLUFF MUNI (POF)

AMDT 1 07242 (FAA)

NOTE: **Rwy 18**, multiple trees beginning 511' from departure end of runway, 515' right of centerline, up to 95' AGL/420' MSL. Multiple trees beginning 878' from departure end of runway, 109' left of centerline, up to 103' AGL/428' MSL. **Rwy 36**, multiple trees beginning 1163' from departure end of runway, 340' right of centerline, up to 66' AGL/391' MSL. Multiple trees beginning 1191' from departure end of runway, 92' left of centerline, up to 79' AGL/404' MSL.

POTOSI, MO

WASHINGTON COUNTY (8WC)

AMDT 1 11069 (FAA)

TAKE-OFF MINIMUMS: **Rwy 20**, 500-2½ or std. w/min. climb of 270' per NM to 1600.

DEPARTURE PROCEDURE: **Rwy 2**, climb heading 019° to 1600 before turning left.

NOTE: **Rwy 20**, trees beginning 103' from DER, 464' right of centerline, up to 60' AGL/1308' MSL. Trees beginning 1222' from DER, 242' left of centerline, up to 60' AGL/1279' MSL. Vehicles on roadway 942' from DER, right and left of centerline, up to 15' AGL/994' MSL. Lookout tower 2.1 NM from DER, 138' right of centerline, 132' AGL/1380' MSL.

12152

TAKE-OFF MINIMUMS AND (OBSTACLE) DEPARTURE PROCEDURES

RED OAK, IA

RED OAK MUNI (RDK)

AMDT 3 11265 (FAA)

TAKE-OFF MINIMUMS: **Rwys 13,31**, NA-

Environmental. **Rwy 5**, 600-2½ or std. with min. climb of 287' per NM to 1800. **Rwy 23**, 300-1¼ or std. with min. climb of 263' per NM to 1500. **Rwy 35**, 300-2 or std. w/min. climb of 284' per NM to 1400.

DEPARTURE PROCEDURE: **Rwy 5**, climb heading 054° to 1800 before proceeding eastbound.

NOTE: **Rwy 5**, towers, trees, pole and windmill beginning 1744' from DER, 51' right of centerline, up to 370' AGL/1557' MSL. Vehicles on road, trees and fence beginning 45' from DER, 150' left of centerline, up to 100' AGL/1144' MSL. **Rwy 17**, train on railroad track and trees beginning 1095' from DER, on centerline, up to 100' AGL/1160' MSL. **Rwy 23**, terrain, train on railroad track, trees and poles beginning 61' from DER, 30' right of centerline, up to 100' AGL/1319' MSL. Train on railroad track and trees beginning 1111' from DER, 33' left of centerline, up to 67' AGL/1168' MSL. **Rwy 35**, vehicles on road beginning 700' from DER, on centerline, 15' AGL/1070' MSL. Hangers, trees, power poles, buildings and silos beginning 435' from DER, 323' right of centerline, up to 100' AGL/1269' MSL. Terrain, power pole and trees beginning 828' from DER, 564' left of centerline, up to 100' AGL/1319' MSL.

ROCK RAPIDS, IA

ROCK RAPIDS MUNI (RRQ)

ORIG 88154 (FAA)

TAKE-OFF MINIMUMS: **Rwy 16**, 300-1.

ROLLA, MO

ROLLA DOWNTOWN (K07)

AMDT 1 03135 (FAA)

TAKE-OFF MINIMUMS: **Rwy 9**, 400-2 or std. with a min. climb of 311' per NM to 1500.

DEPARTURE PROCEDURE: **Rwy 9**, climb via heading 090° to 1500 before proceeding on course.

NOTE: **Rwy 9**, tower 9162' from departure end of runway, 975' left of centerline, 155' AGL/1333' MSL.

ROLLA/VICHY, MO

ROLLA NATIONAL (VIH)

ORIG 10266 (FAA)

NOTE: **Rwy 13**, multiple trees and vehicle on road beginning 465' from DER, 170' left of centerline, up to 68' AGL/1208' MSL. Multiple trees, sign, and vehicle on road beginning 297' from DER, 138' right of centerline, up to 68' AGL/1208' MSL.

Rwy 22, multiple trees, terrain, and vehicle on road beginning 161' from DER, 168' left of centerline, up to 107' AGL/1187' MSL. Power pole, terrain, and vehicle on road beginning 126' from DER, 217' right of centerline, up to 36' AGL/1176' MSL. Vehicle on road 613' from DER, on centerline, 15' AGL/1157' MSL.

Rwy 31, multiple trees, terrain, and vehicle on road beginning 230' from DER, 91' left of centerline, up to 30' AGL/1170' MSL. Multiple trees beginning 779' from DER, 435' right of centerline, up to 58' AGL/1178' MSL. Vehicle on road 611' from DER, on centerline, 15' AGL/1156' MSL.

TAKE-OFF MINIMUMS AND (OBSTACLE) DEPARTURE PROCEDURES

12152

SAC CITY, IA

SAC CITY MUNI (SKI)

ORIG 10154 (FAA)

NOTE: **Rwy 18**, trees beginning 675' from DER, 673' right of centerline, up to 50' AGL/1279' MSL. **Rwy 32**, vehicles on road beginning 349' from DER, 584' right of centerline, up to 15' AGL/1264' MSL. **Rwy 36**, vehicles on road beginning 562' from DER, left and right of centerline, up to 15' AGL/1264' MSL.

SALEM, MO

SALEM MEMORIAL (K33)

ORIG 11293 (FAA)

TAKE-OFF MINIMUMS: **Rwy 17**, 400-2½ or std. w/min. climb of 300' per NM to 1500.

NOTE: **Rwy 17**, trees beginning 675' from DER, 675' left of centerline, up to 100' AGL/1349' MSL. Tree 911' from DER, 290' right of centerline, 34' AGL/1275' MSL. Powerline beginning 942' from DER, 745' left of centerline, up to 120' AGL/1369' MSL. **Rwy 35**, tree 770' from DER, 120' right of centerline, 28' AGL/1249' MSL.

SHELDON, IA

SHELDON MUNI (SHL)

ORIG 11181 (FAA)

NOTE: **Rwy 15**, trees beginning 1347' from DER, 360' left of centerline, up to 98' AGL/1497' MSL. **Rwy 33**, vehicles on road 615' from DER, on centerline, 15' AGL/1436' MSL. Trees beginning 960' from DER. 367' right of centerline, up to 55' AGL/1464' MSL. Antenna on airport beacon, vehicles on road, trains on railroad tracks and tree beginning 31' from DER, 53' left of centerline, up to 62' AGL/1481' MSL.

ST. CHARLES, MO

ST. CHARLES COUNTY SMARTT (SET)

AMDT 2 05300 (FAA)

TAKE-OFF MINIMUMS: **Rwy 36**, std. with a min. climb of 262' per NM to 1300, OR 900-2½ for climb in visual conditions.

DEPARTURE PROCEDURE: **Rwy 36**, for climb in visual conditions: cross St. Charles County Smartt airport at or above 1300 before proceeding on course.

NOTE: **Rwy 36**, tree 2.3 NM from departure end of runway, 3932' right of centerline, 100' AGL/891' MSL.

ST. JOSEPH, MO

ROSECRANS MEMORIAL (STJ)

AMDT 6 05300 (FAA)

TAKE-OFF MINIMUMS: **Rwy 31**, 400-2½ or std. with a min. climb of 325' per NM to 1300.

DEPARTURE PROCEDURE: **Rwy 13**, climb via heading 132° to 2200 before turning left.

NOTE: **Rwy 13**, tree 3394' from departure end of runway, 655' left of centerline, 100' AGL/919' MSL. **Rwy 17**, trees beginning 2691' from departure end of runway, across course line, up to 109' AGL/928' MSL. **Rwy 31**, trees beginning 1.18 NM from departure end of runway, 986' left of centerline, up to 100' AGL/1139' MSL.

ST. LOUIS, MO

CREVE COEUR (1H0)

AMDT 2 07354 (FAA)

TAKE-OFF MINIMUMS: **Rwy 16**, 300-2½ or std. w/min. climb of 206' per NM to 800, or alternatively, with standard takeoff minimums and a normal 200' per NM climb gradient, takeoff must occur no later than 1300' prior to departure end of runway. **Rwy 34**, 300-2½ or std. w/min. climb of 337' per NM to 900.

DEPARTURE PROCEDURE: **Rwy 34**, climb heading 338° to 1100 before proceeding on course.

NOTE: **Rwy 16**, vehicle on road, pole and trees beginning 200' from departure end of runway, 219' right of centerline, up to 100' AGL/546' MSL. Trees beginning 100' from departure end of runway, 356' left of centerline, up to 100' AGL/719' MSL. **Rwy 34**, multiple trees beginning 1847' from departure end of runway, 418' right of centerline up to 100' AGL/749' MSL. Levee and trees beginning 744' from departure end of runway, 275' left of centerline, up to 90' AGL/612' MSL.

LAMBERT-ST. LOUIS INTL (STL)

AMDT 2 10266 (FAA)

TAKE-OFF MINIMUMS: **Rwy 11**, 200-1 or std. w/min. climb of 407' per NM to 900. **Rwy 30L**, 200-1 or std. w/min. climb of 241' per NM to 800. **Rwy 30R**, 200-1½ or std. w/min. climb of 322' per NM to 900.

NOTE: **Rwy 6**, railroad 578' from DER, 620' left of centerline, 23' AGL/557' MSL. Obstruction light on LDA and antenna on building 1038' from DER, 706' right of centerline, 30' AGL/598' MSL. **Rwy 11**, multiple signs, trees, towers, and buildings beginning 2348' from DER, 205' left of centerline, up to 219' AGL/774' MSL. Multiple signs, trees, towers, and buildings beginning 2363' from DER, 489' right of centerline, up to 114' AGL/694' MSL. **Rwy 12L**, tree 1331' from DER, 667' right of centerline, 75' AGL/654' MSL.

Rwy 12R, traffic signal and sign beginning 1413' from DER, 702' right of centerline, up to 17' AGL/672' MSL. Tree 1930' from DER, 372' left of centerline, 67' AGL/636' MSL. **Rwy 30L**, multiple trees, poles, and roads beginning 906' from DER, 600' left of centerline, up to 84' AGL/663' MSL. Obstruction light on LOC 614' from DER, on centerline, 9' AGL/558' MSL. Multiple trees, poles, roads, terrain, and buildings beginning 283' from DER, 185' right of centerline, up to 65' AGL/684' MSL. **Rwy 30R**, obstruction light on GS 1895' from DER, 899' left of centerline, 28' AGL/587' MSL. Multiple obstruction light on buildings, trees, and electrical system beginning 2039' from DER, 387' right of centerline, up to 81' AGL/670' MSL.

SPIRIT OF ST. LOUIS (SUS)

AMDT 1 10266 (FAA)

TAKE-OFF MINIMUMS: **Rwy 8R**, 200-1½ or std. w/min. climb of 238' per NM to 700. **Rwy 26L**, 200-2 or std. w/min. climb of 231' per NM to 900.

NOTE: **Rwy 8L**, multiple trees beginning 1245' from DER, 52' left of centerline, up to 74' AGL/533' MSL. Multiple trees and fence beginning 46' from DER, 72' right of centerline, up to 57' AGL/516' MSL. **Rwy 8R**, railroad and antenna on building beginning 142' from DER, 18' left of centerline, up to 33' AGL/482' MSL. **Rwy 26L**, tree 2239' from DER, 509' right of centerline, up to 62' AGL/521' MSL. **Rwy 26R**, multiple trees beginning 1898' from DER, 18' left of centerline, up to 130' AGL/589' MSL. Multiple trees beginning 32' from DER, 41' right of centerline, up to 142' AGL/601' MSL.

12152

TAKE-OFF MINIMUMS AND (OBSTACLE) DEPARTURE PROCEDURES

TAKE-OFF MINIMUMS AND (OBSTACLE) DEPARTURE PROCEDURES

12152

SEDALIA, MO

SEDALIA RGNL (DMO)
ORIG 08269 (FAA)

NOTE: **Rwy 18**, trees beginning 280' from departure end of runway, 356' left of centerline, up to 47' AGL/956' MSL. Trees beginning 158' from departure end of runway, 340' right of centerline, up to 49' AGL/958' MSL. **Rwy 23**, aircraft on ramp 34' from departure end of runway, 265' left of centerline, 15' AGL/934' MSL. Vehicle on road 417' from departure end of runway, 498' left of centerline, 15' AGL/924' MSL. Train 604' from departure end of runway, left to right of centerline, 23' AGL/932' MSL. Trees beginning 681' from departure end of runway, 286' right of centerline, up to 100' AGL/1009' MSL. Tower 4773' from departure end of runway, 577' right of centerline, 166' AGL/1030' MSL. **Rwy 36**, trees beginning 1948' from departure end of runway, 125' left of centerline, up to 100' AGL/949' MSL. Trees beginning 914' from departure end of runway, 698' right of centerline, up to 100' AGL/969' MSL.

SHENANDOAH, IA

SHENANDOAH MUNI (SDA)
AMDT 1 06271 (FAA)

TAKE-OFF MINIMUMS: **Rwy 4**, 500-3 or std. w/min. climb of 260' per NM to 1700. **Rwy 12**, 500-2 ¾ or std. w/min. climb of 280' per NM to 1600.

NOTE: **Rwy 4**, towers 2.5 NM from departure end of runway, 3155' right of centerline, 491' AGL/1463' MSL. **Rwy 12**, tower 2.2 NM from departure end of runway, 2351' left of centerline, 317' AGL/1437' MSL. **Rwy 22**, tree 2023' from departure end of runway, 508' left of centerline, 61' AGL/1030' MSL. Catenary 965' from departure end of runway, 427' left of centerline, 35' AGL/999' MSL. Bush 101' from departure end of runway, 171' right of centerline, 8' AGL/972' MSL. Pole 1132' from departure end of runway, 253' left of centerline, 32' AGL/996' MSL. Fence 200' from departure end of runway, 392' left of centerline, 3' AGL/967' MSL. **Rwy 30**, trees 950' from departure end of runway, 200' right of centerline, 75' AGL/1024' MSL.

SIBLEY, IA

SIBLEY MUNI (ISB)
ORIG 11125 (FAA)

TAKE-OFF MINIMUMS: **Rwy 35**, 300-1½ or std. w/min. climb of 275' per NM to 1900.

NOTE: **Rwy 17**, numerous trees beginning 1798' from DER, on runway centerline, up to 100' AGL/1629' MSL. Vehicles on road 71' from DER, 499' right of centerline, 10' AGL/1539' MSL. **Rwy 35**, vehicles on road 189' from DER, 530' left of centerline, 15' AGL/1564' MSL. Train 401' from DER, 564' left of centerline, 23' AGL/1572' MSL. Numerous trees beginning 550' from DER, 564' left of centerline, 100' AGL/1649' MSL.

SIKESTON, MO

SIKESTON MEMORIAL MUNI (SIK)
ORIG 06271 (FAA)

NOTE: **Rwy 20**, multiple light poles and trees beginning 166' from departure end of runway, 398' right of centerline, up to 49' AGL/368' MSL. Rod on light pole 1167' from departure end of runway, 798' left of centerline, 34' AGL/348' MSL.

SIoux CENTER, IA

SIoux CENTER MUNI (SOY)
AMDT 2 10154 (FAA)

DEPARTURE PROCEDURE: **Rwy 18**, climb heading 174° to 2000 before turning east.

NOTE: **Rwy 18**, trees beginning 313' from DER, 550' left of centerline to 613' right of centerline, up to 110' AGL/1569' MSL. Farm SILO 700' from DER, 321' right of centerline 95' AGL/1554' MSL. **Rwy 36**, trees 934' from DER, 687' left of centerline up to 110' AGL/1559' MSL.

SIoux CITY, IA

SIoux GATEWAY/COLONEL BUD DAY FIELD
(SUX)

AMDT 3 09127 (FAA)

TAKE-OFF MINIMUMS: **Rwy 35**, std. w/min. climb of 250' per NM to 4200, or 1400-3 for climb in visual conditions.

DEPARTURE PROCEDURE: **Rwy 31**, climb via heading 310° to 2000 before turning east. **Rwy 35**, for climb in visual conditions: cross Sioux Gateway/Col Bud Day Field at or above 2300 MSL before proceeding on course.

NOTE: **Rwy 13**, trees beginning 2042' from DER, 899' right of centerline, up to 100' AGL/1189' MSL. **Rwy 31**, trees beginning 2885' from DER, 122' left of centerline, up to 82' AGL/1171' MSL. Trees beginning 3100' from DER, 431' right of centerline, up to 100' AGL/1174' MSL. **Rwy 35**, trees beginning 795' from DER, 161' left of centerline, up to 100' AGL/1194' MSL. Trees beginning 473' from DER, 229' right of centerline, up to 100' AGL/1194' MSL.

SPENCER, IA

SPENCER MUNI (SPW)
ORIG 10154 (FAA)

NOTE: **Rwy 12**, ground 113' from DER, 308' right of centerline, 0' AGL/1341' MSL. Vehicle on road 531' from DER, 21' right of centerline, 15' AGL/1347' MSL. Trees and antenna on building beginning 2074' from DER, 466' right of centerline, up to 78' AGL/1449' MSL. Trees beginning 3985' from DER, 35' right of centerline, up to 120' AGL/1449' MSL. **Rwy 18**, vehicle on road 562' from DER, 21' right of centerline, 15' AGL/1353' MSL. Trees beginning 600' from DER, 487' right of centerline, up to 120' AGL/1459' MSL.

SPRINGFIELD, MO

SPRINGFIELD-BRANSON NATIONAL (SGF)
AMDT 1 90067 (FAA)

TAKE-OFF MINIMUMS: **Rwy 32**, 300-1 or std. with a min. climb of 250' per NM to 1400.

31 MAY 2012 to 28 JUN 2012

31 MAY 2012 to 28 JUN 2012

12152

TAKE-OFF MINIMUMS AND (OBSTACLE) DEPARTURE PROCEDURES

TAKE-OFF MINIMUMS AND (OBSTACLE) DEPARTURE PROCEDURES

12152

STORM LAKE, IA

STORM LAKE MUNI (SLB)

ORIG 11265 (FAA)

TAKE-OFF MINIMUMS: **Rwys 6,24**, NA - Turf.

NOTE: **Rwy 13**, trees beginning 1730' from DER, 390' left of centerline, up to 100' AGL/1567' MSL. **Rwy 17**, fence posts beginning 120' from DER, 450' left of centerline, up to 11' AGL/1491' MSL. **Rwy 31**, trees beginning 778' from DER, 547' left of centerline, up to 100' AGL/1577' MSL. Vehicle on road beginning 227' from DER, 220' left and right of centerline, up to 15' AGL/1492' MSL.

SULLIVAN, MO

SULLIVAN RGNL (UUV)

ORIG 94090 (FAA)

TAKE-OFF MINIMUMS: **Rwy 24**, 300-1 or std. with a min. climb of 320' per NM to 1200.

TARKIO, MO

GOULD PETERSON MUNI (K57)

ORIG 08269 (FAA)

NOTE: **Rwy 18**, multiple trees beginning 1797' from departure end of runway, 22' left of centerline, 59' AGL/968' MSL. Multiple trees, power poles, vehicle on road and well beginning 94' from departure end of runway, 163' right of centerline, 75' AGL/984' MSL. **Rwy 36**, multiple trees, power poles beginning 404' from departure end of runway, 126' left of centerline, 31' AGL/990' MSL. Multiple trees, power poles and hangers beginning 44' from departure end of runway, 68' right of centerline, 48' AGL/997' MSL.

TIPTON, IA

MATHEWS MEMORIAL (8C4)

AMDT 1 10098 (FAA)

DEPARTURE PROCEDURE: **Rwy 29**, climb heading 288° to 1900 before proceeding on course.

NOTE: **Rwy 11**, tree 1537' from DER, 668' left of centerline, 100' AGL/949' MSL. Tree 1801' from DER, 803' right of centerline, 100' AGL/929' MSL. Tree 3796' from DER, 227' left of centerline, 100' AGL/969' MSL. **Rwy 29**, tree 404' from DER, 576' right of centerline, 100' AGL/929' MSL. Tree 4068' from DER, 964' left of centerline, 100' AGL/959' MSL.

TRENTON, MO

TRENTON MUNI (TRX)

ORIG 90039 (FAA)

TAKE-OFF MINIMUMS: **Rwys 18, 36**, 500-2 or std. with a min. climb of 350' per NM to 1400.DEPARTURE PROCEDURE: **Rwys 18, 36**, climb runway heading to 1400 before proceeding on course.

VINTON, IA

VINTON VETERANS MEMORIAL AIRPARK (VTI)

AMDT 1 83230 (FAA)

DEPARTURE PROCEDURE: **All Rwys**, north and east departures (270° CW 160°) climb on runway heading to 3400 before turning.

WARRENSBURG, MO

SKYHAVEN (RCM)

AMDT 1 07130 (FAA)

NOTE: **Rwy 13**, sign 177' from departure end of runway, 273' right of centerline, 30' AGL/815' MSL. **Rwy 18**, multiple trees beginning 5' from departure end of runway, 160' right of centerline, up to 39' AGL/826' MSL. Building, sign, multiple trees and poles beginning 466' from departure end of runway, 188' left of centerline, up to 48' AGL/837' MSL. **Rwy 36**, multiple trees beginning 192' from departure end of runway, 327' right of centerline, up to 20' AGL/817' MSL.

WASHINGTON, IA

WASHINGTON MUNI (AWG)

AMDT 1 10098 (FAA)

NOTE: **Rwy 13**, vehicle on road beginning 150' from DER, left and right of centerline, up to 15' AGL/774' MSL. Houses 787' from DER, 392' right of centerline, up to 50' AGL/809' MSL. **Rwy 36**, tank and water tower beginning 4640' from DER, 704' left of centerline, up to 150' AGL/890' MSL.

WASHINGTON, MO

WASHINGTON RGNL (FYG)

AMDT 1 09295 (FAA)

TAKE-OFF MINIMUMS: **Rwy 33**, 400-2¼ or std. w/ min. climb of 275' per NM to 1000.DEPARTURE PROCEDURE: **Rwy 15**, climb heading 153° to 1100 before turning left.

NOTE: **Rwy 15**, numerous trees beginning 3076' from DER, 618' left of centerline up to 108' AGL/589' MSL. **Rwy 33**, numerous trees beginning 1035' from DER, 171' left of centerline, up to 68' AGL/552' MSL. Numerous trees beginning 2907' from DER, 66' right of centerline up to 65' AGL/824' MSL.

WATERLOO, IA

WATERLOO RGNL (ALO)

ORIG 06271 (FAA)

NOTE: **Rwy 6**, multiple trees beginning 2087' from departure end of runway, 265' right of centerline, up to 71' AGL/944' MSL, tree 2226' from departure end of runway, 125' left of centerline, 69' AGL/932' MSL. **Rwy 24**, tree 2262' from departure end of runway, 473' right of centerline, 55' AGL/925' MSL. **Rwy 30**, multiple trees beginning 2160' from departure end of runway, 938' right of centerline, up to 95' AGL/995' MSL. **Rwy 36**, multiple trees beginning 1213' from departure end of runway, 157' right of centerline, up to 54' AGL/1004' MSL.

WAVERLY, IA

WAVERLY MUNI (C25)

ORIG 90123 (FAA)

TAKE-OFF MINIMUMS: **Rwys 11, 29**, 300-1.

WEBSTER CITY, IA

WEBSTER CITY MUNI (EBS)

ORIG 10042 (FAA)

TAKE-OFF MINIMUMS: **Rwys 5, 23**, NA-Environment.

NOTE: **Rwy 14**, trees beginning 1848' from DER, 223' left of centerline, up to 61' AGL/1185' MSL. **Rwy 32**, vehicle plus road 563' from DER, 55' right of centerline, 15' AGL/1123' MSL. Trees 3830' from DER, 826' right of centerline, 100' AGL/1209' MSL.

12152

TAKE-OFF MINIMUMS AND (OBSTACLE) DEPARTURE PROCEDURES

NC-3

WEST PLAINS, MO

WEST PLAINS RGNL (UNO)

AMDT 1 10322 (FAA)

TAKE-OFF MINIMUMS: Rwy 36, 300-1¼ or std. w/a min. climb of 215' per NM to 1500, or alternatively, with std. takeoff minimums and a normal 200' per MN climb gradient, takeoff must occur no later than 1400' prior to DER.

NOTE: Rwy 18, trees beginning 98' from DER, 65' right of centerline, up to 100' AGL/1339' MSL. Vehicle on road, 199' from DER, 302' left of centerline, 15' AGL/1254' MSL. Trees beginning 978' from DER, 388' left of centerline, up to 77' AGL/1277' MSL.

Rwy 36, trees beginning 374' from DER, 265' left of centerline, up to 100' AGL/1319' MSL. Trees beginning 644' from DER, 631' right of centerline, up to 100' AGL/1319' MSL. Trees beginning 2690' from DER, 601' right of centerline, up to 100' AGL/1339' MSL. Trees beginning 5800' from DER, 1171' left of centerline, up to 100' AGL/1379' MSL.

WEST UNION, IA

GEORGE L. SCOTT MUNI (3Y2)

AMDT 2 10210 (FAA)

NOTE: Rwy 17, tree 912' from DER, 114' left of centerline, 100' AGL/1259' MSL. Tree 3265' from DER, 554' left of centerline, 100' AGL/1309' MSL. Rwy 35, tree 750' from DER, 160' left of centerline, 100' AGL/1349' MSL. Vehicle on road 990' from DER, left to right of centerline, up to 15' AGL/1264' MSL. Tree 2296' from DER, 382' right of centerline, 100' AGL/1309' MSL.

WHITEMAN AFB (KSZL)

KNOB NOSTER, MO. ORIG, 09155

TAKE-OFF OBSTACLES: Rwy 1, Aircraft 14' AGL/885' MSL, 22' from DER, 430' left of centerline. Aircraft 14' AGL/885' MSL, 31' from DER, 535' left of centerline. Rwy 19, Aircraft 16' AGL/851' MSL, 22' from DER, 468' left of centerline. Aircraft 16' AGL/851' MSL, 57' from DER, 468' left of centerline. Aircraft 14' AGL/849' MSL, 13' from DER, 538' left of centerline.

WINTERSET, IA

WINTERSET MUNI (3Y3)

AMDT 2 10322 (FAA)

NOTE: Rwy 14, trees beginning 464' from DER, 426' left of centerline, up to 80' AGL/1199' MSL. Trees beginning 1770' from DER, 358' right of centerline, up to 80' AGL/1179' MSL. Rwy 32, vehicles on road 17' from DER, on centerline, up to 15' AGL/1134' MSL. Trees beginning 502' from DER, 489' right of centerline, up to 80' AGL/1199' MSL. Trees beginning 590' from DER, 604' left of centerline, up to 80' AGL/1199' MSL. Trees 3792' from DER, 878' left of centerline, 80' AGL/1219' MSL.

31 MAY 2012 to 28 JUN 2012

31 MAY 2012 to 28 JUN 2012