

12152

# AIRPORT DIAGRAM

AL-445 (FAA)

WENDOVER (ENV)  
WENDOVER, UTAH

AWOS-3  
135.075  
CTAF/UNICOM  
122.8

114°02'W

114°01'W

40°44'N



TERMINAL

GA  
APRON

FIELD  
ELEV  
4237

12

121.9°

8001 X 100

ELEV  
4226

8000 X 150

26

ELEV  
4230

076.9°

256.9°

40°43'N

SW-4, 31 MAY 2012 to 28 JUN 2012

SW-4, 31 MAY 2012 to 28 JUN 2012



VAR 13.1° E

JANUARY 2010  
ANNUAL RATE OF CHANGE  
0.1° W

301.9°

B3  
B4  
30

ELEV  
4224

RWY 08-26  
S-75, D-140, 2S-175  
RWY 12-30  
S-64, D-85, 2S-108, 2D-120

40°42'N

# AIRPORT DIAGRAM

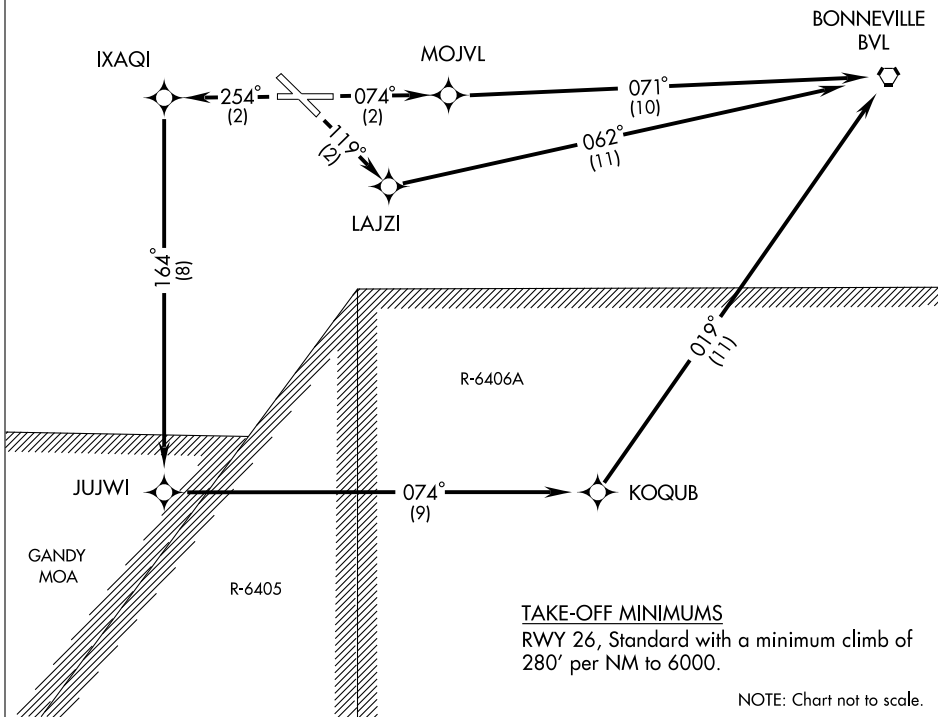
12152

WENDOVER, UTAH  
WENDOVER (ENV)

# BONNEVILLE ONE DEPARTURE (RNAV)

CEDAR CITY RADIO  
122.1R  
UNICOM 122.8 (CTAF)  
AWOS-3 135.075

NOTE: 1. GPS required.  
2. RNAV 1.



SW-4, 31 MAY 2012 to 28 JUN 2012

SW-4, 31 MAY 2012 to 28 JUN 2012

## DEPARTURE ROUTE DESCRIPTION

TAKE-OFF RUNWAY 8: Climb to 9000 via course 074° to MOJVL WP, then via course 071° to BVL VORTAC.

TAKE-OFF RUNWAY 12: Climb to 9000 via course 119° to LAJZI WP, then via course 062° to BVL VORTAC.

TAKE-OFF RUNWAY 26: Climb to 9000 via course 254° to IXAQI WP, then via course 164° to JUJWI WP, then via course 074° to KOQUB WP, then via course 019° to BVL VORTAC.

TAKE-OFF RUNWAY 30: Not authorized.

# RNAV (GPS) RWY 26

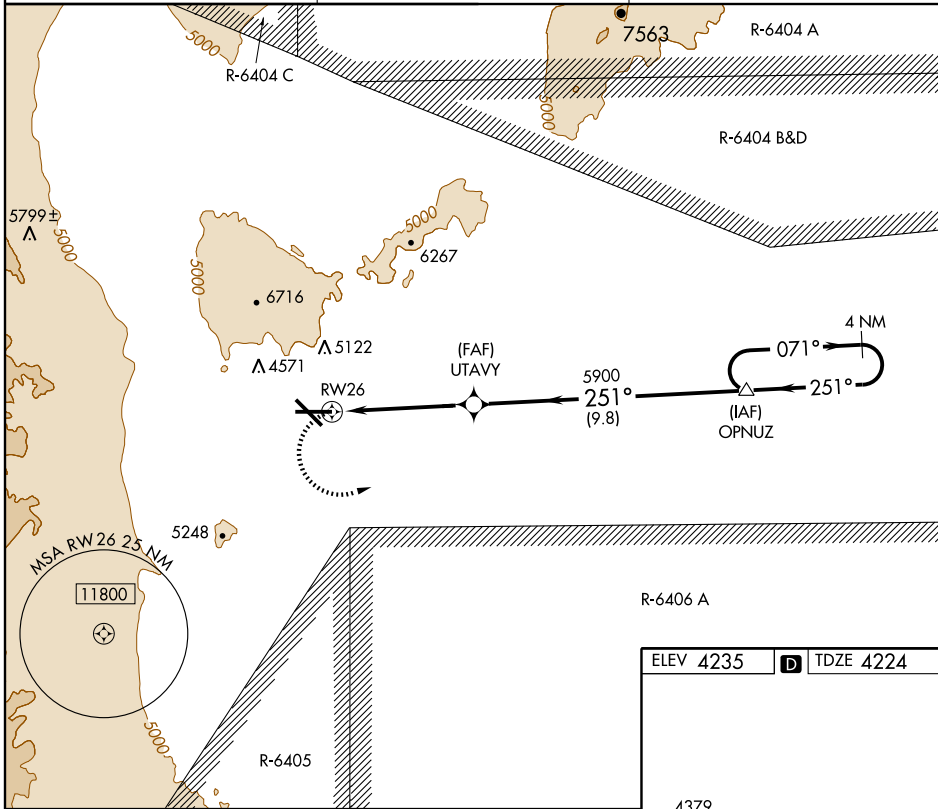
WENDOVER (ENV)

APP CRS	Rwy Idg	<b>8000</b>
<b>251°</b>	TDZE	<b>4224</b>
	Apt Elev	<b>4235</b>

**NA** Circling not authorized north of Rwy 8-26.  
GPS or RNP-0.3 required. DME/DME RNP-0.3 NA.

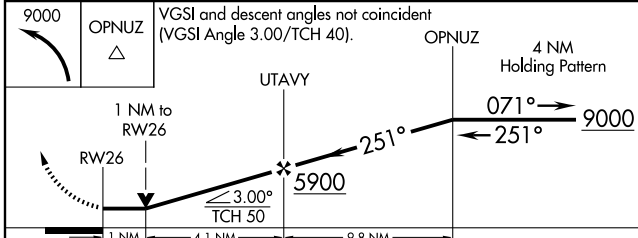
MISSED APPROACH: Climbing left turn to 9000 direct OPNUZ WP and hold.

AWOS-3 <b>135.075</b>	CEDAR CITY RADIO <b>122.1R</b>	UNICOM <b>122.8 (CTAF)</b>
--------------------------	-----------------------------------	-------------------------------

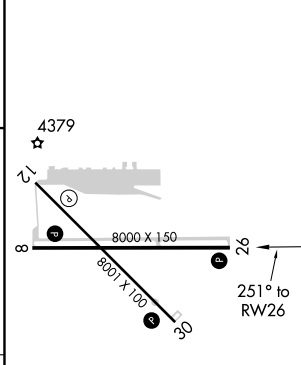


SW-4, 31 MAY 2012 to 28 JUN 2012

SW-4, 31 MAY 2012 to 28 JUN 2012



ELEV 4235	<b>D</b> TDZE 4224
-----------	--------------------



CATEGORY	A	B	C	D	E
RNAV MDA	4580-1	356 (400-1)		4580-1¼ 356 (400-1¼)	4660-1½ 436 (500-1½)
CIRCLING	4640-1 405 (500-1)	4700-1 465 (500-1)	4700-1½ 465 (500-1½)	4800-2 565 (600-2)	5000-2¾ 765 (800-2¾)

REIL Rwy 8, 12 and 30 **Ⓛ**  
MIRL Rwy 8-26 and 12-30 **Ⓛ**

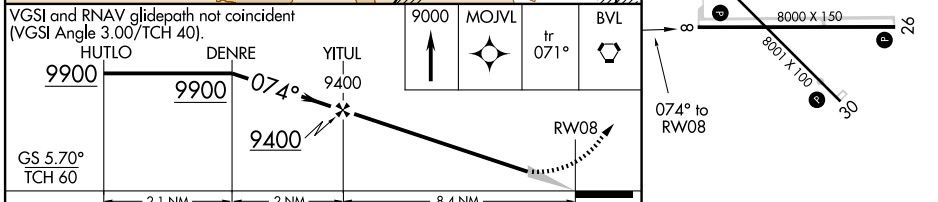
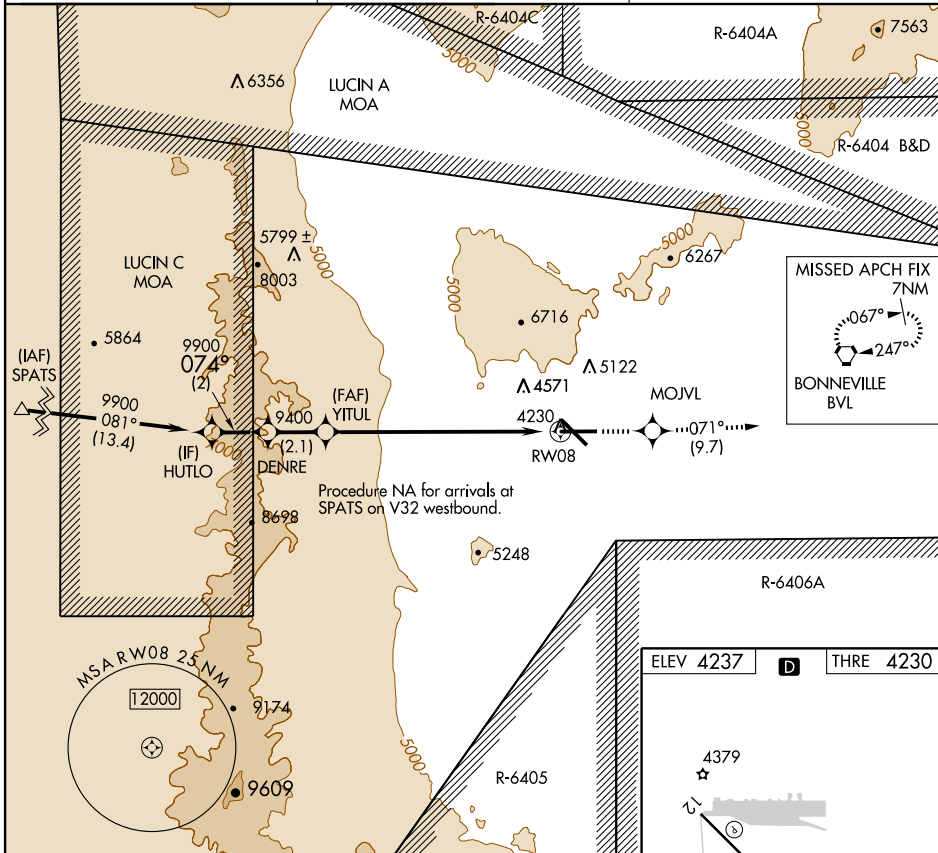
WAAS CH <b>42523</b> W08A	APP CRS <b>074°</b>	Rwy Idg THRE <b>4230</b> Apt Elev <b>4237</b>
---------------------------------	------------------------	---

# RNAV (GPS) RWY 8

WENDOVER (ENV)

<p><b>NA</b> Baro-VNAV NA. DME/DME RNP-0.3 NA.</p>	<p>MISSED APPROACH: Climb to 9000 direct MOJVL and on track 071° to BVL VORTAC and hold, continue climb-in-hold to 9000.</p>
--	--

<p>AWOS-3 <b>135.075</b></p>	<p>CEDAR CITY RADIO <b>122.1R</b></p>	<p>UNICOM <b>122.8 (CTAF)</b></p>
----------------------------------	---	---------------------------------------



CATEGORY	A	B	C	D
LPV DA	4530- <sup>7</sup> / <sub>8</sub> 300 (300- <sup>7</sup> / <sub>8</sub> )		NA	
LNAV/VNAV DA	4493- <sup>7</sup> / <sub>8</sub> 263 (300- <sup>7</sup> / <sub>8</sub> )		NA	

REIL Rwy 8, 12 and 30  
MIRL Rwy 8-26 and 12-30

WENDOVER, UTAH

AL-445 (FAA)

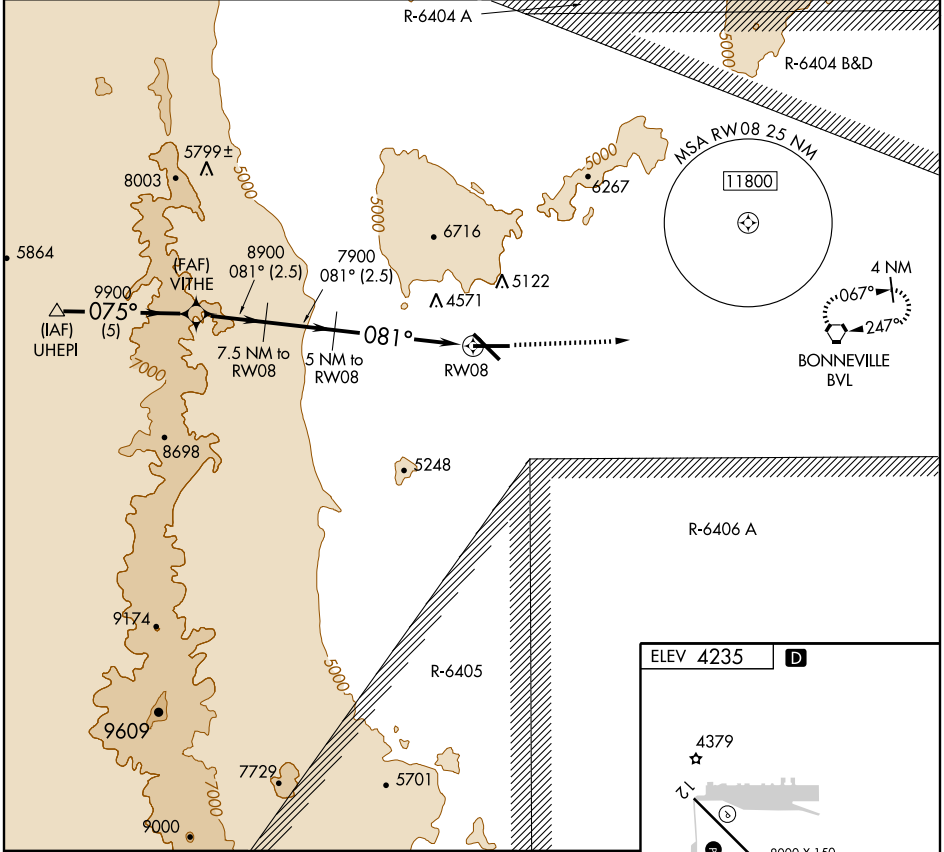
# RNAV (GPS)-A

WENDOVER (ENV)

APP CRS <b>081°</b>	Rwy Idg TDZE Apt Elev	<b>N/A</b> <b>N/A</b> <b>4235</b>
------------------------	-----------------------------	---

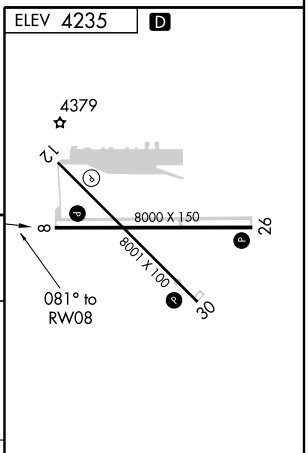
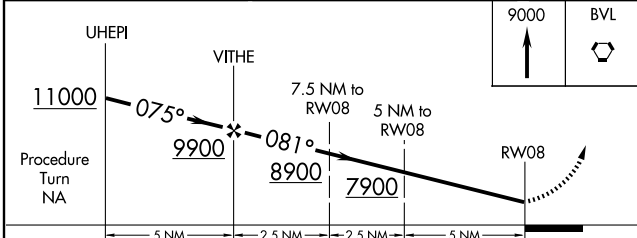
**NA** Circling not authorized north of Rwy 8-26. GPS or RNP-0.3 required. DME/DME RNP-0.3 NA. MISSED APPROACH: Climb to 9000 direct BVL VORTAC and hold.

AWOS-3 <b>135.075</b>	CEDAR CITY RADIO <b>122.1R</b>	UNICOM <b>122.8 (CTAF)</b>
--------------------------	-----------------------------------	-------------------------------



SW-4, 31 MAY 2012 to 28 JUN 2012

SW-4, 31 MAY 2012 to 28 JUN 2012



CATEGORY	A	B	C	D	E
CIRCLING	5900-1¼ 1665 (1700-1¼)	5900-1½ 1665 (1700-1½)	5900-3	1665 (1700-3)	

REIL Rws 8, 12 and 30  
MIRL Rws 8-26 and 12-30

WENDOVER, UTAH  
Orig 12152

40°43'N-114°02'W

# WENDOVER (ENV)

## RNAV (GPS)-A

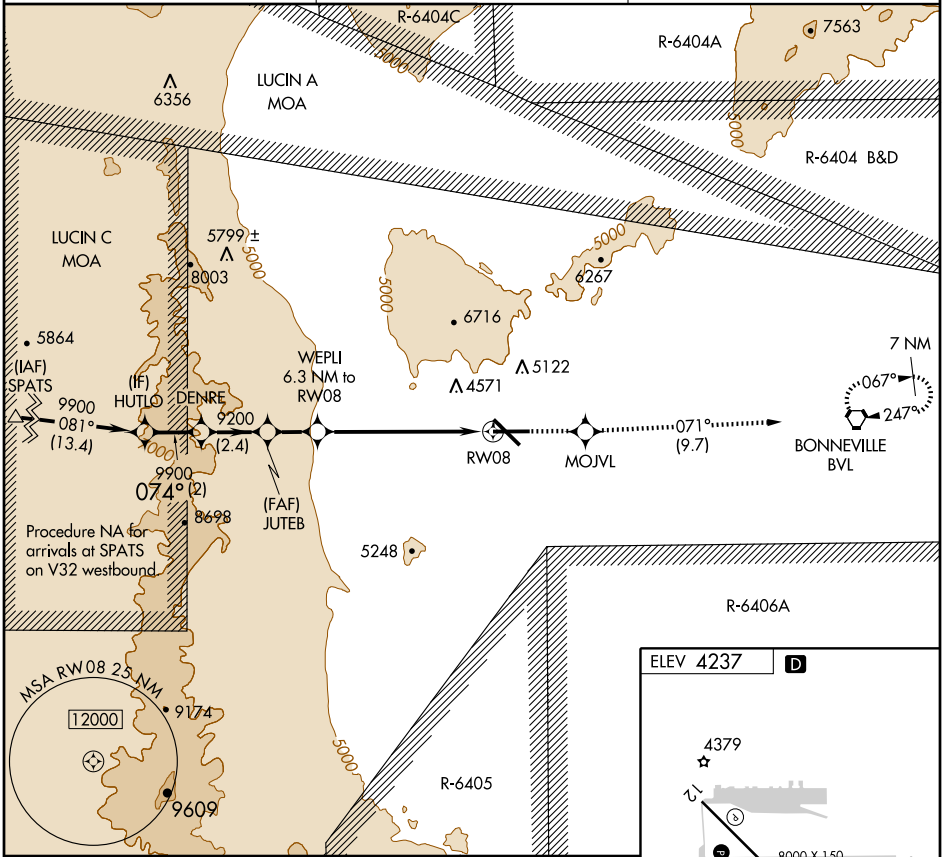
APP CRS	Rwy Idg	N/A
<b>074°</b>	TDZE	N/A
	Apt Elev	<b>4237</b>

# RNAV (GPS)-C

WENDOVER (ENV)

**∇** Circling not authorized north of Rwy 8-26.  
**Δ** NA MISSED APPROACH: Climb to 9000 direct MOJVL and on track 071° to BVL VORTAC and hold, continue climb-in-hold to 9000.

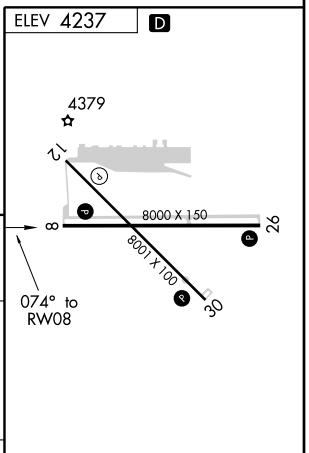
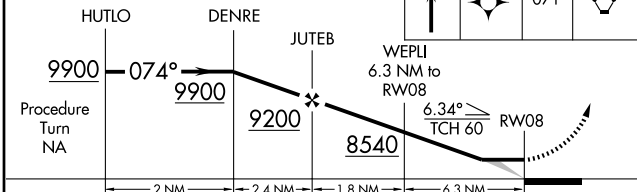
AWOS-3 <b>135.075</b>	CEDAR CITY RADIO <b>122.1R</b>	UNICOM <b>122.8 (CTAF)</b>
--------------------------	-----------------------------------	-------------------------------



SW-4, 31 MAY 2012 to 28 JUN 2012

SW-4, 31 MAY 2012 to 28 JUN 2012

VGSI and descent angles not coincident.  
 (VGSI Angle 3.00°/TCH 40).



CATEGORY	A	B	C	D	E
CIRCLING	6020-1¼ 1783 (1800-1¼)	6020-1½ 1783 (1800-1½)	6020-3 1783 (1800-3)	6200-3	1963 (2000-3)

REIL Rwy 8, 12 and 30  
 MIRL Rwy 8-26 and 12-30

WENDOVER, UTAH

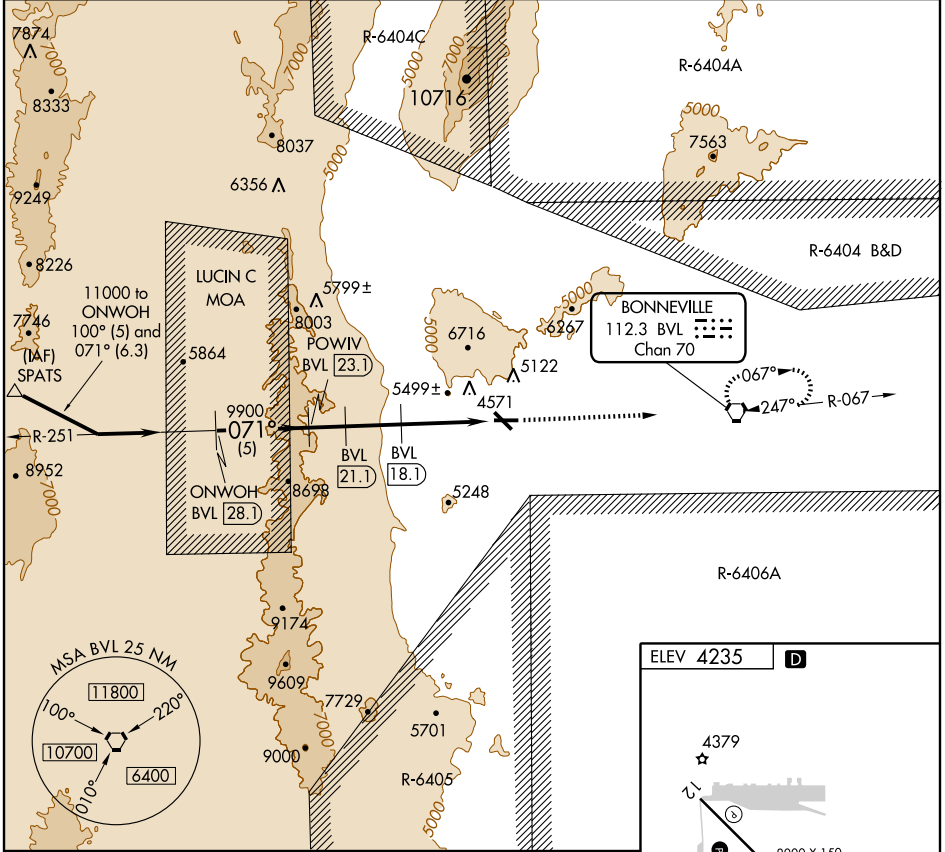
AL-445 (FAA)

VOR/DME-B  
WENDOVER (ENV)

VORTAC BVL <b>112.3</b> Chan <b>70</b>	APP CRS <b>071°</b>	Rwy Idg TDZE Apt Elev <b>N/A</b> <b>N/A</b> <b>4235</b>
--	------------------------	--

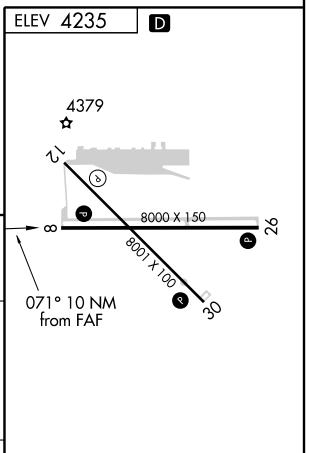
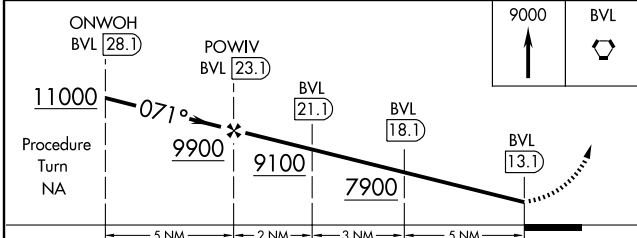
**⚠** Circling not authorized north of Rwy 8-26. **⚠** MISSED APPROACH: Climb to 9000 direct BVL VORTAC and hold.

AWOS-3 <b>135.075</b>	CEDAR CITY RADIO <b>122.1R</b>	UNICOM <b>122.8 (CTAF) 0</b>
--------------------------	-----------------------------------	---------------------------------



SW-4, 31 MAY 2012 to 28 JUN 2012

SW-4, 31 MAY 2012 to 28 JUN 2012



CATEGORY	A	B	C	D	E
CIRCLING	5900-1¼ 1665 (1700-1¼)	5900-1½ 1665 (1700-1½)	5900-3	1665 (1700-3)	

REIL Rwys 8, 12 and 30 **0**  
MIRL Rwys 8-26 and 12-30 **0**

WENDOVER, UTAH  
Orig-A 12152

40°43'N-114°02'W

WENDOVER (ENV)  
VOR/DME-B

# VOR/DME or TACAN RWY 26

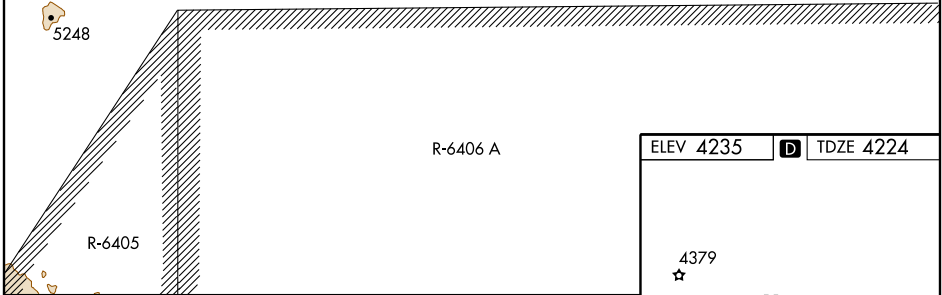
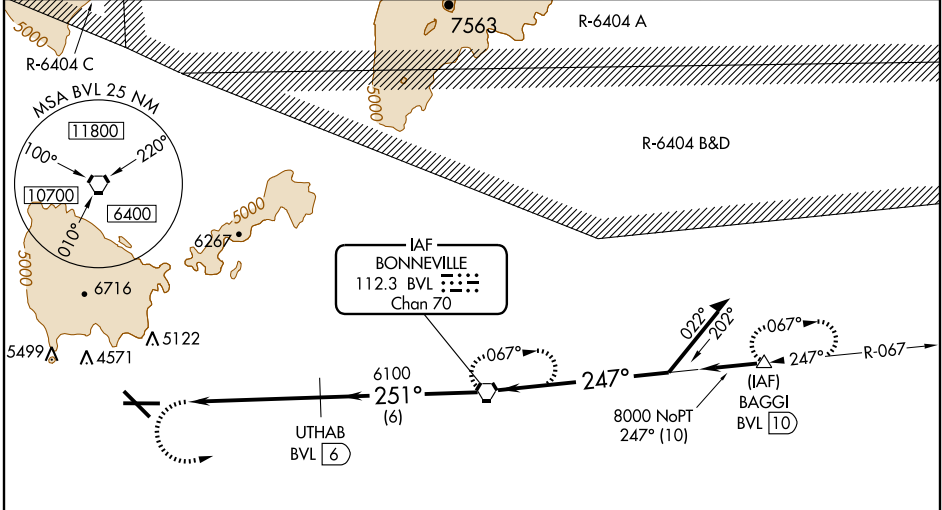
WENDOVER (ENV)

VORTAC BVL <b>112.3</b> Chan <b>70</b>	APP CRS <b>251°</b>	Rwy Idg TDZE Apt Elev	<b>8000</b> <b>4224</b> <b>4235</b>
--	------------------------	-----------------------------	---

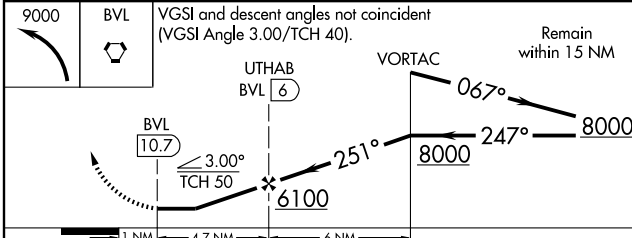
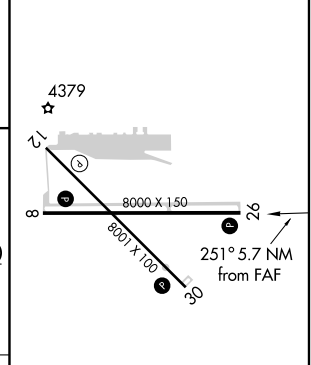
**⚠** Circling not authorized north of Rwy 8-26.

**MISSED APPROACH:** Climbing left turn to 9000 direct BVL VORTAC and hold. (TACAN aircraft continue via BVL R-067 to BAGGI INT and hold NE, right turns, 247° inbound.)

AWOS-3 <b>135.075</b>	CEDAR CITY RADIO <b>122.1R</b>	UNICOM <b>122.8 (CTAF)</b>
--------------------------	-----------------------------------	-------------------------------



ELEV 4235	<b>D</b>	TDZE 4224
-----------	----------	-----------



CATEGORY	A	B	C	D	E
S-26	4580-1¼	356 (400-1¼)		4620-1¼ 396 (400-1¼)	4960-2½ 736 (800-2½)
CIRCLING	4640-1¼ 405 (500-1¼)	4700-1¼ 465 (500-1¼)	4700-1½ 465 (500-1½)	4800-2 565 (600-2)	5000-2¾ 765 (800-2¾)

REIL Rwy 8, 12 and 30 **⓪**  
MIRL Rwy 8-26 and 12-30 **⓪**

SW-4, 31 MAY 2012 to 28 JUN 2012

SW-4, 31 MAY 2012 to 28 JUN 2012

# VOR/DME or TACAN RWY 26

## INSTRUMENT APPROACH PROCEDURE CHARTS

 **IFR ALTERNATE AIRPORT MINIMUMS**

Standard alternate minimums for non precision approaches are 800-2 (NDB, VOR, LOC, TACAN, LDA, VORTAC, VOR/DME, ASR or WAAS LNAV); for precision approaches 600-2 (ILS or PAR). Airports within this geographical area that require alternate minimums other than standard or alternate minimums with restrictions are listed below. NA - means alternate minimums are not authorized due to unmonitored facility or absence of weather reporting service. Civil pilots see FAR 91. IFR Alternate Airport Minimums: Ceiling and Visibility Minimums not applicable to USA/USN/USAF. Pilots must review the IFR Alternate Airport Minimums Notes for alternate airfield suitability.

## NAME ALTERNATE MINIMUMS

**BRYCE CANYON, UT**

BRYCE  
CANYON (BCE) ..... **RNAV (GPS) Rwy 3**  
Category A, B, 900-2; Category C, 900-2½.

**BULLHEAD CITY, AZ**

LAUGHLIN/BULLHEAD  
INTL (IFP) ..... **RNAV (GPS) Rwy 16<sup>12</sup>**  
**RNAV (GPS) Rwy 34<sup>34</sup>**  
**VOR/DME Rwy 34<sup>15</sup>**

- <sup>1</sup>NA when local weather not available.  
<sup>2</sup>Categories A, B, 1200-2; Categories C, D, 1200-3.  
<sup>3</sup>NA when control tower closed.  
<sup>4</sup>Categories A, B, 1100-2; Categories C, D, 1100-3.  
<sup>5</sup>Categories A, B, 2200-2; Categories C, D, 2200-3.

**CEDAR CITY, UT**

CEDAR CITY RGNL (CDC) ..... **ILS Rwy 20**  
**VOR Rwy 20**  
Category D, 900-2¾.

**DOUGLAS BISBEE, AZ**

BISBEE DOUGLAS  
INTL (DUG) ..... **VOR/DME or GPS Rwy 17**  
**VOR Rwy 17**  
NA when control zone not in effect.

**ELKO, NV**

ELKO RGNL (EKO) ..... **LDA/DME Rwy 23<sup>1</sup>**  
**RNAV (GPS) Rwy 23<sup>2</sup>**  
**VOR-A<sup>3</sup>**  
**VOR/DME-B<sup>4</sup>**

- <sup>1</sup>Categories A,B, 900-2; Category C 1000-3; Category D, 1100-3.  
<sup>2</sup>Categories A,B, 1400-2; Categories C,D, 1400-3.  
<sup>3</sup>Categories A,B, 1500-2; Categories C,D, 1500-3.  
<sup>4</sup>Categories A,B, 1200-2; Categories C,D, 1200-3.

## NAME ALTERNATE MINIMUMS

**ELY, NV**

ELY AIRPORT/  
YELLAND FIELD (ELY) .... **RNAV (GPS) Rwy 18**  
NA when local weather not available.  
Category D 1000-3.

**FLAGSTAFF, AZ**

FLAGSTAFF  
PULLIAM (FLG) ..... **ILS or LOC/DME Rwy 21<sup>12</sup>**  
**VOR-A<sup>3</sup>**

- <sup>1</sup>NA when control tower closed.  
<sup>2</sup>ILS, Categories B,C,D, 700-2.  
<sup>3</sup>Categories A, B, 1300-2; Categories C, D, 1300-3.

**FORT HUACHUCA-SIERRA VISTA, AZ**

SIERRA VISTA MUNI-  
LIBBY AAF (FHU) ..... **ILS or LOC Rwy 26**  
**NDB Rwy 26**  
**RNAV (GPS) Rwy 8**  
**VOR Rwy 26**  
NA when control tower closed.

**GLENDALE, AZ**

GLENDALE  
MUNI (GEU) ..... **RNAV (GPS) Rwy 1**  
**RNAV (GPS) Rwy 19**  
NA when local weather not available.

**GRAND CANYON, AZ**

GRAND CANYON NATIONAL  
PARK (GCN) ..... **ILS or LOC/DME Rwy 3**  
NA when control tower closed.  
Category D, 700-2.

VALLE (40G) ..... **VOR/DME Rwy 19**  
NA except for operators with approved weather reporting service.



# ALTERNATE MINS

M2



**NAME** ALTERNATE MINIMUMS  
**KANAB, UT**  
 KANAB MUNI (KNB) ..... **RNAV (GPS) Rwy 1**  
 Category B, 1100-2; Category C, 1400-3.

**KINGMAN, AZ**  
 KINGMAN (IGM) ..... **RNAV (GPS) Rwy 3**  
**RNAV (GPS) Y Rwy 21**  
**VOR/DME Rwy 21**  
 Category D, 800-2¼.

**LAS VEGAS, NV**  
 HENDERSON  
 EXECUTIVE (HND) ..... **RNAV (GPS)-B<sup>1</sup>**  
**VOR-C<sup>2</sup>**  
 NA when local weather not available.  
<sup>1</sup>Categories A,B, 1500-2; Category C, 1500-3.  
<sup>2</sup>Categories A, B, 2400-2; Category C, 2400-3.

**MC CARRAN**  
 INTL (LAS) ..... **ILS or LOC Rwy 25L<sup>2</sup>**  
**ILS or LOC Rwy 25R<sup>2</sup>**  
**ILS or LOC/DME Rwy 1L<sup>3</sup>**  
**RNAV (GPS) Rwy 1R<sup>4</sup>**  
**RNAV (GPS) Rwy 19L<sup>14</sup>**  
**RNAV (GPS) Rwy 19R<sup>14</sup>**  
**VOR/DME-A<sup>4</sup>**  
**VOR Rwy 25L/R<sup>4</sup>**

<sup>1</sup>NA when local weather not available.  
<sup>2</sup>ILS,LOC,Categories A,B, 900-2; Category C,D, 1100-3, Category E, 1400-3.  
<sup>3</sup>ILS,LOC,Categories A,B, 900-2; Category C, 1100-3.  
<sup>4</sup>Categories A,B, 900-2; Categories C,D, 1100-3.

**NORTH LAS VEGAS (VGT) ..... ILS or LOC Rwy 12L**  
 NA when control tower closed.

**LOGAN, UT**  
 LOGAN-CACHE (LGU) ..... **RNAV (GPS) Rwy 17**  
 Categories A, B, 1800-2; Categories C, D, 1800-3.

**LOVELOCK, NV**  
 DERBY FIELD (LOL) ..... **VOR or GPS-C<sup>1</sup>**  
**VOR/DME or GPS-A<sup>2</sup>**  
<sup>1</sup>Categories A,B, 1900-2; Categories C,D, 1900-3.  
<sup>2</sup>Categories A,B, 900-2; Category C,900-2¼; Category D, 900-3.

**MESA, AZ**  
 FALCON FIELD (FFZ) ..... **RNAV (GPS) Rwy 4L<sup>1</sup>**  
**RNAV (GPS) Rwy 4R<sup>1</sup>**  
**RNAV (GPS)-B<sup>2</sup>**  
<sup>1</sup>NA when local weather not available.  
<sup>2</sup>NA when control tower closed.

**NAME** ALTERNATE MINIMUMS  
**MILFORD, UT**  
 MILFORD MUNI/BEN AND JUDY  
 BRISCOE FIELD (MLF) ..... **RNAV (GPS) Rwy 16**  
**RNAV (GPS) Rwy 34**  
**VOR/DME-A**  
 NA when local weather not available.

**OGDEN, UT**  
 OGDEN-  
 HINCKLEY (OGD) ..... **ILS Or LOC Rwy 3<sup>12</sup>**  
**RNAV (GPS) Y Rwy 3**  
**RNAV (GPS) Z Rwy 3**  
 NA when local weather not available.  
<sup>1</sup>ILS, Category D, 700-2.  
<sup>2</sup>NA when control tower closed.

**PANGUITCH, UT**  
 PANGUITCH  
 MUNI (U55) ..... **RNAV (GPS) Rwy 18**  
**RNAV (GPS) Rwy 36<sup>1</sup>**  
 NA when local weather not available.  
<sup>1</sup>Categories A, B, 1200-2.

**PHOENIX, AZ**  
 PHOENIX DEER  
 VALLEY (DVT) ..... **RNAV (GPS)-B<sup>12</sup>**  
**RNAV (GPS)-C<sup>3</sup>**  
**RNAV (GPS) Rwy 7R<sup>14</sup>**  
**RNAV (GPS) Rwy 25L<sup>14</sup>**

<sup>1</sup>NA when local weather not available.  
<sup>2</sup>Categories A, B, 1000-2; Category C, 1000-2¼.  
<sup>3</sup>Categories A, B, 1000-2; Category C, 1000-2¼; Category D, 1100-3.  
<sup>4</sup>Categories A, B, 1000-2; Category C, 1000-2¼; Category D, 1000-3.

**PHOENIX-MESA GATEWAY (IWA) ..... ILS or LOC Rwy 30C<sup>12</sup>**  
**RNAV (GPS) Rwy12R<sup>14</sup>**  
**RNAV (GPS) Y Rwy 30C<sup>13</sup>**  
**RNAV (GPS) Rwy 30L<sup>13</sup>**  
**VOR or TACAN Rwy 30C<sup>1</sup>**

<sup>1</sup>NA when local weather not available.  
<sup>2</sup>NA when control tower closed.  
<sup>3</sup>Category E, 800-2¼.  
<sup>4</sup>Category E, 1100-3.

31 MAY 2012 to 28 JUN 2012

31 MAY 2012 to 28 JUN 2012



# ALTERNATE MINS

M2

SW-4





# TAKE-OFF MINIMUMS AND (OBSTACLE) DEPARTURE PROCEDURES

## INSTRUMENT APPROACH PROCEDURE CHARTS

# IFR TAKE-OFF MINIMUMS AND (OBSTACLE) DEPARTURE PROCEDURES

12152

### Civil Airports and Selected Military Airports

ALL USERS: Airports that have Departure Procedures (DPs) designed specifically to assist pilots in avoiding obstacles during the climb to the minimum enroute altitude, and/or airports that have civil IFR take-off minimums other than standard, are listed below. Take-off Minimums and Departure Procedures apply to all runways unless otherwise specified. Altitudes, unless otherwise indicated, are minimum altitudes in MSL.

DPs specifically designed for obstacle avoidance are referred to as Obstacle Departure Procedures (ODPs) and are described below in text, or published separately as a graphic procedure. If the (Obstacle) DP is published as a graphic procedure, its name will be listed below, and it can be found in either this volume (civil), or the applicable military volume, as appropriate. Users will recognize graphic obstacle DPs by the term "(OBSTACLE)" included in the procedure title; e.g., TETON TWO (OBSTACLE). If not specifically assigned a departure procedure (i.e., ODP, SID, or radar vector) as part of an IFR clearance, an ODP may be required to be flown for obstacle clearance, even though not specifically stated in the IFR clearance. When doing so in this manner, ATC should be informed when the ODP being used contains a specified route to be flown, restrictions before turning, and/or altitude restrictions.

Graphic DPs designed by ATC to standardize traffic flows, ensure aircraft separation and enhance capacity are referred to as "Standard Instrument Departures (SIDs)". SIDs also provide obstacle clearance and are published under the appropriate airport section. ATC clearance must be received prior to flying a SID.

CIVIL USERS NOTE: Title 14 Code of Federal Regulations Part 91 prescribes standard take-off rules and establishes take-off minimums for certain operators as follows: (1) Aircraft having two engines or less - one statute mile. (2) Aircraft having more than two engines - one-half statute mile. These standard minima apply in the absence of any different minima listed below.

MILITARY USERS NOTE: Civil (nonstandard) take-off minima are published below. For military take-off minima, refer to appropriate service directives.

### NAME TAKE-OFF MINIMUMS

#### BATTLE MOUNTAIN, NV

BATTLE MOUNTAIN (BAM)

AMDT 3 09127 (FAA)

TAKE-OFF MINIMUMS: **Rwy 3**, std. w/ a min climb of 282' per NM to 7300 or 4700-3 for climb in visual conditions. **Rwy 12**, std. w/ a min climb of 386' per NM to 7600 or 4700-3 for climb in visual conditions.

DEPARTURE PROCEDURE: **Rwy 3**, climb heading 032° to 8200 before proceeding on course or climb in visual conditions to cross Battle Mountain Airport at or above 9100 before proceeding on course. **Rwy 12**, climb heading 122° and BAM R-076 to 10000 before proceeding on course or climb in visual conditions to cross Battle Mountain Airport at or above 9100 before proceeding on course. **Rwy 21**, climb direct BAM VORTAC and BAM R-205 to 10100 before proceeding on course. **Rwy 30**, climb heading 302° and BAM R-324 to 9100 before proceeding on course.

#### BEAVER, UT

BEAVER MUNI

TAKE-OFF MINIMUMS: **Rwys 7, 25**, NA-obstacles. **Rwys 13, 31**, 2600-2¾ for climb in visual conditions. DEPARTURE PROCEDURE: **Rwys 13, 31**, climb in visual conditions to cross Beaver Muni Airport Northwestbound at or above 8300 then climb to 10100 via MLF VORTAC R-102 to MLF VORTAC. Do not exceed 210 KIAS until established on MLF VORTAC R-102.

### NAME TAKE-OFF MINIMUMS

#### BLANDING, UT

BLANDING MUNI

TAKE-OFF MINIMUMS: **Rwy 35**, 800-1 or std. with a min. climb of 350 feet per NM to 6700.

DEPARTURE PROCEDURE: **Rwy 17**, turn left. **Rwy 35**, turn right climb to 9000 via heading 090° and DVC R-223 to DVC VORTAC, then continue climb on course to MEA.

#### BRIGHAM CITY, UT

BRIGHAM CITY (BMC)

AMDT 6A 11349 (FAA)

TAKE-OFF MINIMUMS: **Rwy 35**, NA DEPARTURE PROCEDURE: **Rwy 17**, climbing right turn heading 207° and OGD R-331 to OGD VORTAC before proceeding on course.

NOTE: **Rwy 17**, poles 266' from DER, 558' right of centerline, 30' AGL/4258' MSL.

#### BRYCE CANYON, UT

BRYCE CANYON (BCE)

AMDT 1 11069 (FAA)

DEPARTURE PROCEDURE: use BRYCE DEPARTURE.

12152

# TAKE-OFF MINIMUMS AND (OBSTACLE) DEPARTURE PROCEDURES

**BULLHEAD CITY, AZ**

LAUGHLIN/BULLHEAD INTL (IFP)

AMDT 1 09183 (FAA)

TAKE-OFF MINIMUMS: **Rwy 16**, std. w/a min. climb of 370' per NM to 1800, or 1700-3 for climb in visual conditions. **Rwy 34**, std. w/a min. climb of 495' per NM to 5500, or 1700-3 for climb in visual conditions.

DEPARTURE PROCEDURE: **Rwy 16**, climb via heading 164° and EED VORTAC R-334 to EED VORTAC, or for climb in visual conditions: cross Laughlin/Bullhead Intl airport at or above 2300, then continue climbing via heading 155° and EED VORTAC R-335 to EED VORTAC. **Rwy 34**, climb via heading 344° to 1600, then climbing right turn direct EED VORTAC, or for climb in visual conditions: cross Laughlin/Bullhead Intl airport at or above 2300, then continue climbing via heading 155° and EED VORTAC R-335 to EED VORTAC. **All Aircraft** climb in EED VORTAC holding pattern (East, right turn, 257° inbound) to cross EED VORTAC at or above MEA for direction of flight before proceeding on course.

NOTE: **Rwy 16**, multiple bushes beginning 3600' from DER, left of centerline, up to 12' AGL/1029' MSL.

**Rwy 34**, multiple poles beginning 2211' from DER, right of centerline, up to 105' AGL/821' MSL.

**CARSON CITY, NV**

CARSON (CXP)

ORIG 08325 (FAA)

TAKE-OFF MINIMUMS: **Rwy 27**, NA-obstacles.

DEPARTURE PROCEDURE: **Rwy 9**, use JIMPA DEPARTURE.

**CASA GRANDE, AZ**

CASA GRANDE MUNI (CGZ)

AMDT 1A 11069 (FAA)

TAKE-OFF MINIMUMS: **Rwy 5**, 300-1 or std. w/ min. climb of 354' per NM to 1700.

DEPARTURE PROCEDURE: **Rwys 5**, right turn. **Rwy 23**, climb direct TFD VORTAC. Continue climb in holding pattern (SW, right turn, 048° inbound) to MEA for direction of flight.

NOTE: **Rwy 5**, pole 4034' from DER, 805' left of centerline, 109' AGL/1593' MSL.

**CEDAR CITY, UT**

CEDAR CITY RGNL

TAKE-OFF MINIMUMS: **Rwy 8**, 3500-3 or std. with a min. climb of 450' per NM to 10000.

DEPARTURE PROCEDURE: **Rwys 20, 26**, turn right. **Rwys 2, 8**, turn left, climb direct to CDC VOR/DME, continue climb to 9000 via R-348. Northbound continue on course. All others reverse course, climb to cross CDC VOR/DME at or above MCA for direction of flight.

**CHANDLER, AZ**

CHANDLER MUNI

DEPARTURE PROCEDURE: **Rwy 4R**, climbing left turn heading 220°. **Rwys 22L, 22R**, climbing left turn heading 190°. **All Aircraft**, continue climb via TFD R-350 to TFD VORTAC.

NOTE: **Rwy 4L**, multiple towers and buildings beginning 69' from departure end of runway, 397' left of centerline, up to 80' AGL/1319' MSL.

**STELLAR AIRPARK**

DEPARTURE PROCEDURE: **Rwy 17**, turn left, climb via heading 150°. **Rwy 35**, turn right. **All aircraft** climb via TFD R-350 direct TFD VORTAC.

NOTE: **Rwy 17**, tower and signs beginning 574' from departure end of runway, 183' right of centerline, up to 50' AGL/1124' MSL. Sign 611' from departure end of runway, 365' left of centerline, 42' AGL/1214' MSL.

**CLIFTON/MORENCI, AZ**

GREENLEE COUNTY (CFT)

ORIG 10210 (FAA)

DEPARTURE PROCEDURE: Use SAN SIMON DEPARTURE.

**COLORADO CITY, AZ**

COLORADO CITY MUNI

TAKE-OFF MINIMUMS: **Rwy 2**, NA.

DEPARTURE PROCEDURE: **Rwy 11**, turn right. **Rwys 20, 29**, turn left. **All aircraft** climb to 7400 via the 160° bearing from AZC NDB then continue climb on course.

**COOLIDGE, AZ**

COOLIDGE MUNI

DEPARTURE PROCEDURE: **Rwys 5, 35**, climbing left turn heading 280° to intercept TFD R-063, then via R-063 to TFD VORTAC before proceeding on course.

**Rwy 17**, climbing right turn heading 240° to intercept TFD R-090, then via R-090 to TFD VORTAC before proceeding on course. **Rwy 23**, climb runway heading to intercept TFD R-090, then via R-090 to TFD VORTAC before proceeding on course.

**DAVIS-MONTHAN AFB (KDMA)**

TUCSON, AZ. . . . .07186

Diverse departures not authorized, use published departure procedure for obstacle avoidance.

TAKE-OFF OBSTACLES: **Rwy 12**: Terrain 0' AGL/2707' MSL, 81' from DER, 500' left of centerline. Terrain 0' AGL/2707' MSL, 46' from DER, 512' left of centerline. Terrain 0' AGL/2707' MSL, 16' from DER, 500' left of centerline. Terrain 0' AGL/2706' MSL, 0' from DER, 200' left of centerline.

**Rwy 30**: Terrain 0' AGL/2592' MSL, 0' from DER, 106' left of centerline. Terrain 0' AGL/2592' MSL, 7' from DER, 97' left of centerline. Terrain 0' AGL/2592' MSL, 0' from DER, 484' right of centerline. Terrain 0' AGL/2592' MSL, 13' from DER, 493' right of centerline. Vehicle 11' AGL/2615' MSL, 1017' from DER, 477' left of centerline. Terrain 0' AGL/2612' MSL, 237' from DER, 590' left of centerline.

31 MAY 2012 to 28 JUN 2012

31 MAY 2012 to 28 JUN 2012

# TAKE-OFF MINIMUMS AND (OBSTACLE) DEPARTURE PROCEDURES

12152

## DELTA, UT

### DELTA MUNI

TAKE-OFF MINIMUMS: **Rwy 17**, std. with a min. climb of 412' per NM to 6600, or 1800-3' for climb in visual conditions. Climb in visual conditions NA at night. **Rwy 12**, NA-terrain. **Rwy 30**, NA-airspace.

DEPARTURE PROCEDURE: **Rwy 17**, climb via DTA VORTAC R-347 to DTA VORTAC, or climb in visual conditions to cross departure end of runway southbound at or above 6400, then via DTA VORTAC R-347 to DTA VORTAC, thence... **Rwy 35**, climb via heading 346° to 5800, then climbing left turn via heading 180° and DTA VORTAC R-310 to DTA VORTAC, thence...

...climb in holding pattern (hold south, left turn, 004° inbound) to cross DTA VORTAC at or above airway MEA for route of flight.

NOTE: **Rwy 17**, trees 1598' from departure end of runway, 62' right of centerline, 60' AGL/4799' MSL.

## DOUGLAS BISBEE, AZ

### BISBEE- DOUGLAS INTL (DUG)

#### AMDT 1 12040 (FAA)

DEPARTURE PROCEDURE: **Rwys 8,17**, climbing right turn on heading 330° to intercept DUG VORTAC R-286 to 9500. **Rwy 26**, climbing right turn to intercept DUG VORTAC R-286 to 9500. **Rwy 35**, climbing left turn to intercept DUG VORTAC R-286 to 9600.

NOTE: **Rwy 8**, trees and terrain beginning 145' from DER, 51' left of centerline, up to 8' AGL/4220' MSL. Trees and terrain beginning 22' from DER, 247' right of centerline, up to 13' AGL/4197' MSL. **Rwy 17**, trees and terrain beginning 91' from DER, 76' left of centerline, up to 5' AGL/4118' MSL. Trees and terrain beginning 12' from DER, 146' right of centerline, up to 5' AGL/4115' MSL. **Rwy 26**, tree and terrain beginning 16' from DER, 233' left of centerline, up to 5' AGL/4167' MSL. Trees and terrain beginning 17' from DER, 32' right of centerline, up to 7' AGL/4167' MSL. **Rwy 35**, trees and terrain beginning 118' from DER, 15' left of centerline, up to 6' AGL/4190' MSL. Tree and terrain beginning 75' from DER, 100' right of centerline, up to 11' AGL/4200' MSL.

## DUCHESNE, UT

### DUCHESNE MUNI

DEPARTURE PROCEDURE: Climb direct to MTU VORTAC to depart at or above 7200 eastbound or 10000 westbound.

## ELKO, NV

### ELKO RGNL (EKO)

#### AMDT 5A 11013 (FAA)

TAKE-OFF MINIMUMS: **Rwys 12,30**, NA-terrain. **Rwy 5**, std. w/ min. climb of 495' per NM to 8000. **Rwy 23**, 2500-3 or std. w/ min. climb of 340' per NM to 8000.

DEPARTURE PROCEDURE: **Rwy 5**, climb heading 053° to 6000, then climbing right turn direct BQU VOR/DME, then... **Rwy 23**, (V32 Southwest) climb heading 233° to 6000, then climbing left turn heading 200° to intercept BQU R-241 (V32). **Rwy 23**, (all others), climb heading 233° to 6000, then climbing left turn direct BQU VOR/DME, then...

climb in BQU VOR/DME holding pattern (South, left turns, 340° inbound) to cross BQU VOR/DME at the MEA/MCA/MOCA for direction of flight.

NOTE: **Rwy 5**, trees, poles, and antennas beginning 412' from DER, 131' left of centerline, up to 107' AGL/5207' MSL. Trees poles, antennas and lights beginning 497' from DER, 84' right of centerline, up to 91' AGL/5191' MSL. **Rwy 23**, pole 1244' from DER, 663' left of centerline, 45' AGL/5085' MSL. Signs, poles, road, silo and tree beginning 673' from DER, 171' right of centerline, up to 68' AGL/5132' MSL.

## ELY, NV

### ELY AIRPORT-YELLAND FIELD (ELY)

#### AMDT 2 11181 (FAA)

DEPARTURE PROCEDURE: use ELY DEPARTURE.

## FALLON, NV

### FALLON MUNI (FLX)

#### AMDT 1 10154 (FAA)

DEPARTURE PROCEDURE: **Rwy 21**, climbing right turn... **Rwys 3, 13, 31**, climbing left turn...

...to 9300 direct HZN VORTAC, continue climb in HZN VORTAC holding pattern (West, left turns, 075° inbound) cross HZN VORTAC at or above 9300 before proceeding on course, continue climb to MEA or assigned altitude.

NOTE: **Rwy 3**, vehicle on road 39' from DER, 306' right of centerline, 15' AGL/3971' MSL. Tree 111' from DER, 424' left of centerline 25' AGL/3988' MSL. Tree 364' from DER, 272' right of centerline, 25' AGL/3988' MSL. **Rwy 13**, trees beginning 3' from DER, 494' right of centerline, up to 25' AGL/4021' MSL. Vehicle on road beginning 22' from DER, 80' left of centerline, up to 15' AGL/3978' MSL. **Rwy 21**, vehicle on road 477' from DER, 241' left of centerline, 15' AGL/3984' MSL. Tree 710' from DER, 75' left of centerline, 25' AGL/3994' MSL. **Rwy 31**, trees beginning 52' from DER, 159' right of centerline, up to 25' AGL/3975' MSL. Trees beginning 111' from DER, 140' left of centerline, up to 25' AGL/3981' MSL.

## FALLON NAS(VAN VOORHIS FLD)(KNFL)

### FALLON, NV. . . . . 10154

TAKE-OFF MINIMUMS: **Rwy 13L/R**, Diverse departures authorized 131° CW 311'; standard with minimum climb rate of 245 ft/NM to 7200. **Rwy 31L/R**, Diverse departures authorized 083° CCW 131'; standard with minimum climb rate of 225 ft/NM to 7200. **Rwy 7**, Diverse departures authorized, standard with minimum climb rate of 295 ft/NM to 12,200 (Civil) or 275 ft/NM to 12,000 (Military). **Rwy 25**, Diverse departures authorized 132° CW 073'; standard with minimum climb rate of 250 ft/NM to 12,000 (Civil) or 240 ft/NM to 12,000 (Military).

31 MAY 2012 to 28 JUN 2012

31 MAY 2012 to 28 JUN 2012

12152

# TAKE-OFF MINIMUMS AND (OBSTACLE) DEPARTURE PROCEDURES

# TAKE-OFF MINIMUMS AND (OBSTACLE) DEPARTURE PROCEDURES

12152

## FILLMORE, UT

FILLMORE MUNI (FOM)  
ORIG 10322 (FAA)

TAKE-OFF MINIMUMS: **Rwy 4**, std. w/ min. climb of 250' per NM to 6200, or 1800-3 for climb in visual conditions.

DEPARTURE PROCEDURE: **Rwy 4**, climbing left turn to 9600 on DTA R-141 to DTA VORTAC, climb in DTA VORTAC holding pattern (South, left turns, 004° inbound) to cross DTA VORTAC at or above MEA for route of flight or for climb in visual conditions cross Fillmore Muni airport Northwest bound at or above 6600, then climb to 9600 on DTA R-146 to DTA VORTAC. Continue climb in DTA VORTAC holding pattern (South, left turns, 004° inbound) to cross DTA VORTAC at or above MEA for route of flight. **Rwy 22**, climbing right turn to 9600 on DTA R-152 to DTA VORTAC, climb in DTA VORTAC holding pattern (South, left turns, 004° inbound) to cross DTA VORTAC at or above MEA for route of flight.

NOTE: **Rwy 4**, light 60' from DER, 393' left of centerline, 8' AGL/4987' MSL. Windsock 129' from DER, 301' left of centerline, 21' AGL/5000' MSL. Rising terrain 132' from DER, 385' right of centerline, 4989' MSL. Fence beginning 138' from DER, 174' right of centerline, up to 15' AGL/4996' MSL. Buildings beginning 259' from DER, 455' right of centerline, up to 13' AGL/5012' MSL. Beacon 311' from DER, 505' left of centerline, 52' AGL/5031' MSL. Trees beginning 333' from DER, 242' left of centerline, up to 37' AGL/5034' MSL. Vehicle on road beginning 472' from DER, 608' left to 1093' right of centerline, up to 35' AGL/5073' MSL. Pole 488' from DER, 620' left of centerline, 38' AGL/5037' MSL. Windmeter, 623' from DER, 342' left of centerline, 9' AGL/5008' MSL. Building 873' from DER, 196' left of centerline, 17' AGL/5016' MSL. **Rwy 22**, fence 97' from DER, 302' left of centerline, 15' AGL/4916' MSL. Vehicle on road beginning 228' from DER, 398' left of centerline, up to 9' AGL/4928' MSL.

## FLAGSTAFF, AZ

FLAGSTAFF PULLIAM

DEPARTURE PROCEDURE: **Rwy 3**, turn right. **Rwy 21**, turn left. Aircraft departing FLG R-160 CW R-175 climb on course. All others climb southbound on FLG R-172 to 9000, then climbing left turn direct FLG VOR/DME.

## FORT HUACHUCA-SIERRA VISTA, AZ

SIERRA VISTA MUNI-LIBBY AAF (FHU)  
AMDT 2A 10294 (FAA)

TAKE-OFF MINIMUMS: **Rwy 21**, NA.

DEPARTURE PROCEDURE: **Rwys 3, 8, 12**, turn left.

**Rwys 26, 30**, turn right. All Aircraft climb to 9500 to TOMBS INT via FHU VOR R-021 or 018° bearing from DAO NDB.

## GLENDALE, AZ

GLENDALE MUNI

TAKE-OFF MINIMUMS: **Rwy 19**, NA-ATC.

DEPARTURE PROCEDURE: **Rwy 1**, Use DRAKE (RNAV) DEPARTURE.

## GLOBE, AZ

SAN CARLOS APACHE (P13)

ADMT 2 08101 (FAA)

DEPARTURE PROCEDURE: Use IZTIR DEPARTURE.

## GOODYEAR, AZ

PHOENIX GOODYEAR

TAKE-OFF MINIMUMS: **Rwy 3**, NA-ATC.

DEPARTURE PROCEDURE: **Rwy 21**, Use POTER DEPARTURE.

## GRAND CANYON, AZ

GRAND CANYON NATIONAL PARK

TAKE-OFF MINIMUMS: **Rwy 3**, NA-environmental.

DEPARTURE PROCEDURE: **Rwy 21**, use GRAND DEPARTURE.

## HEBER CITY, UT

HEBER CITY MUNI-RUSS MCDONALD FIELD  
(36U)

AMDT 2 11125 (FAA)

DEPARTURE PROCEDURE: Use COOLI DEPARTURE.

## HILL AFB (KHIF)

OGDEN, UT

Diverse departures not authorized, use radar vectors or published Departure Procedures (DP) for obstacle avoidance.

## HUNTINGTON, UT

HUNTINGTON MUNI (69V)

AMDT 2A 09295 (FAA)

TAKE-OFF MINIMUMS: **Rwys 18, 26, 36**, NA. **Rwy 30**, 1700-3 or std. with a min. climb of 300' per NM to 8100.

DEPARTURE PROCEDURE: **Rwys 8, 12**, climbing left turn direct PUC VOR/DME...

**Rwy 30**, climbing right turn direct PUC VOR/DME....

...continue climb in PUC VOR/DME holding pattern (hold S, right turns, 009° inbound) to MEA for direction of flight.

NOTE: **Rwy 8**, tree 2663' from DER, 922' left of centerline, 40' AGL/5979' MSL. **Rwy 12**, tree 333' from DER, 132' right of centerline, 40' AGL/5919' MSL.

**Rwy 30**, tree 2065' from DER, 875' left of centerline, 40' AGL/5999' MSL.

## KANAB, UT

KANAB MUNI (KNB)

AMDT 3 10042 (FAA)

TAKE-OFF MINIMUMS: **Rwy 1**, std. with min. climb of 742' per NM to 6600, or 1100-3 with min. climb of 535' per NM to 6900, or 2400-3 for climb in visual conditions.

DEPARTURE PROCEDURE: **Rwy 19**, climb heading 171° to 6800 before turning. **Rwy 1**, climb heading 006° to 6100 before turning, or for climb in visual conditions, cross Kanab Muni airport at or above 7100 before proceeding on course.

NOTE: **Rwy 1**, vent on building 554' from DER, 370' left of centerline, 16' AGL/4884' MSL. Trees beginning 1138' from DER, 302' left of centerline, up to 100' AGL/5939' MSL. Rising terrain and trees beginning 1.68 NM from DER, 247' right of centerline, up to 100' AGL/5239' MSL. Rising terrain and trees beginning 1.76 NM from DER, 766' left of centerline, up to 100' AGL/5599' MSL. Rising terrain beginning 3.5 NM from DER, left and right of centerline, up to 6359' MSL. **Rwy 19**, trees beginning 271' from DER, 506' right of centerline, up to 100' AGL/4899' MSL.

31 MAY 2012 to 28 JUN 2012

31 MAY 2012 to 28 JUN 2012

12152

# TAKE-OFF MINIMUMS AND (OBSTACLE) DEPARTURE PROCEDURES

# TAKE-OFF MINIMUMS AND (OBSTACLE) DEPARTURE PROCEDURES

12152

## KINGMAN, AZ

### KINGMAN

TAKE-OFF MINIMUMS: **Rwys 3, 17, 21, 35**, 800-1 or std. with a min. climb of 210' per NM to 7000.

DEPARTURE PROCEDURE: Climb northbound on IGM R-010 until reaching 6000; reverse course to the left and continue climb to 9000 direct to IGM. If unable to cross IGM at 9000 continue climb in IGM holding pattern (SW, left turns, 027° inbound).

## LAGUNA AAF (LGF)

### YUMA PROVING GROUND, AZ (03247)

Rwy 6, 18, 36 turn right, climb to 3600 direct BZA VORTAC.

Rwy 24 climb to 3600 direct to BZA VORTAC.

#### TAKE-OFF OBSTACLES:

Rwy 18: 386' (6' AGL) windsock, 818' from departure end of rwy, 194' left of centerline.

## LAKE HAVASU CITY, AZ

### LAKE HAVASU CITY (HII)

#### AMDT 2 12152 (FAA)

TAKE-OFF MINIMUMS: **Rwy 14**, std. w/min. climb of 465' per NM to 4800, or 1500-3 for climb in visual conditions. **Rwy 32**, 600-1½ w/min. climb of 492' per NM to 1100, or 1500-3 for climb in visual conditions.

DEPARTURE PROCEDURE: **Rwy 14**, climbing right turn heading 300° to intercept EED VORTAC R-155 to EED VORTAC, continue climb in EED VORTAC holding pattern (East, right turns, 257° inbound) to cross EED VORTAC at or above 6100 before proceeding on course or ...

**Rwy 32**, climbing left turn heading 290° to intercept EED VORTAC R-155 to EED VORTAC, continue climb in EED VORTAC holding pattern (East, right turns, 257° inbound) to cross EED VORTAC at or above 6100 before proceeding on course or ...

**Rwys 14, 32, ...** For climb in visual conditions: cross Lake Havasu City airport northwest bound at or above 2300, then Intercept EED VORTAC R-138 to EED VORTAC, continue climb in EED VORTAC holding pattern (East, right turns, 257° inbound) to cross EED VORTAC at or above 6100 before proceeding on course. When executing VCOA, notify ATC prior to departure.

NOTE: **Rwy 14**, pole 3327' from DER, 46' right of centerline, 107' AGL/868' MSL. Poles 3468' from DER, 195' left of centerline, up to 107' AGL/890' MSL. Trees/bushes 976' from DER, 380' left of centerline, up to 46' AGL/829' MSL. Terrain 143' from DER, 346' left of centerline, up to 804' MSL. **Rwy 32**, trees 1544' from DER, 416' right of centerline, up to 44' AGL/793' MSL.

## LAS VEGAS, NV

### HENDERSON EXECUTIVE

TAKE-OFF MINIMUMS: **Rwy 17L/R**, Cat A/B std. with a min. climb of 491' per NM to 6000, or 2100-3 for climb in visual conditions, Cat C/D NA. **Rwy 35L/R**, Cat A/B std. with a min. climb of 312' per NM to 4700, or 2100-3 for climb in visual conditions, Cat C/D NA.

DEPARTURE PROCEDURE: **Rwy 17L/R**, climbing right turn via LAS R-157 to LAS VORTAC before proceeding on course, or for climb in visual conditions: Cross Henderson Executive Airport eastbound at or above 4500, then via BLD R-249 to BLD VORTAC. **Rwy 35L/R**, climbing right turn via BLD R-257 to BLD VORTAC before proceeding on course, or for climb in visual conditions: Cross Henderson Executive Airport eastbound at or above 4500, then via BLD R-249 to BLD VORTAC.

NOTE: **Rwy 17L**, tree 5610' from departure end of runway, 82' left of centerline, 100' AGL/2739' MSL. Tree 1.9 miles from departure end of runway, 1495' left of centerline, 100' AGL/2859' MSL. **Rwy 17R**, tree 4041' from departure end of runway, 859' left of centerline, 100' AGL/2739' MSL.

### MCCARRAN INTL (LAS)

#### AMDT 6 10210 (FAA)

TAKE-OFF MINIMUMS: **Rwys 17L/R**, std. w/min. climb of 210' per NM to 2600. **Rwy 25R**, 300-2 or standard with a minimum climb of 230' per NM to 2600.

DEPARTURE PROCEDURE: **Rwys 1L/R**, climbing right turn direct BLD VORTAC before proceeding on course. **Rwys 7L/R**, climb heading 075° to 3700, then climbing right turn direct BLD VORTAC before proceeding on course. **Rwys 25L/R**, climb heading 255° to 2800, then climbing right turn direct BLD VORTAC before proceeding on course. **Rwys 19L/R**, climbing left turn via heading 120° and BLD R-257 direct BLD VORTAC before proceeding on course.

NOTE: **Rwy 1L**, building 1508' from DER, 463' left of centerline, 71' AGL/2146' MSL. Pole 453' from DER, 283' left of centerline, 38' AGL/2118' MSL. Sign 1042' from DER, 694' left of centerline, 35' AGL/2124' MSL. **Rwy 1R**, sign 1331' from DER, 448' right of centerline, 60' AGL/2120' MSL. Vents 604' from DER, 539' right of centerline, up to 17' AGL/2095' MSL. **Rwy 7L**, trees 761' from DER, left and right of centerline, up to 42' AGL/2074' MSL. Pole 747' from DER, 442' right of centerline, 25' AGL/2057' MSL. **Rwy 7R**, tower 1457' from DER, 847' right of centerline, 65' AGL/2096' MSL. **Rwy 19L**, multiple buildings, trees and poles 1394' from DER, 251' right of centerline, up to 96' AGL/2284' MSL. Sign 2181' from DER, 1062' right of centerline, 36' AGL/2236' MSL. **Rwy 19R**, trees 1563' from DER, 329' left of centerline, up to 55' AGL/2236' MSL. Multiple buildings, signs and poles 197' from DER, 59' right of centerline, up to 75' AGL/2291' MSL. **Rwy 25L**, multiple poles, sign and buildings 1003' from DER, 145' left of centerline, up to 97' AGL/2291' MSL. Tree 2837' from DER, 1008' left of centerline, 72' AGL/2230' MSL. Railroad 2564' from DER, 773' left of centerline, 66' AGL/2223' MSL. **Rwy 25R**, multiple poles and trees 533' from DER, 1' left of centerline, up to 271' AGL/2457' MSL. Building 1822' from DER, 652' left of centerline, 59' AGL/2238' MSL. Roads 669' from DER, 17' right of centerline, up to 29' AGL/2208' MSL.

### NORTH LAS VEGAS (VGT)

#### AMDT 3 08045 (FAA)

DEPARTURE PROCEDURE: Use BOULDER CITY DEPARTURE.

31 MAY 2012 to 28 JUN 2012

31 MAY 2012 to 28 JUN 2012

12152

# TAKE-OFF MINIMUMS AND (OBSTACLE) DEPARTURE PROCEDURES

# TAKE-OFF MINIMUMS AND (OBSTACLE) DEPARTURE PROCEDURES

12152

## LOGAN, UT

LOGAN-CACHE (LGU)

AMDT 8 09351 (FAA)

TAKE-OFF MINIMUMS: **Rwys 10,28**,NA-obstacles.

DEPARTURE PROCEDURE: **Rwys 17, 35**, use ORNEY DEPARTURE.

## LOVELOCK, NV

DERBY FIELD (LOL)

ORIG-B 11349 (FAA)

TAKE-OFF MINIMUMS: **Rwy 2**, 2300-2 or std. with a min. climb of 300' per NM to 6200. **Rwy 8**, 1100-1 or std. with a min. climb of 250' per NM to 5000. **Rwys 20, 26**, 2300-2 or std. with a min. climb of 260' per NM to 6200.

DEPARTURE PROCEDURE: **Rwy 2**, turn right. **Rwys 8,20,26**, turn left, climb direct LLC VORTAC. Aircraft departing 330°CW 359°climb via LLC R-333 to ROBUD INT; 360°CW 089°climb in LLC VORTAC holding pattern (hold NW, left turns, 153°inbound) to depart LLC VORTAC at or above 8600; 090°CW 219° climb on course; 220°CW 329°climb in LLC VORTAC holding pattern to depart LLC VORTAC at or above 8600. Continue climb on course to MEA or assigned altitude.

## LUKE AFB (KLUF),

GLENDALE, AZ . . . . . AMDT 4, 11265

DEPARTURE PROCEDURE:

**Rwy 3L, 3R**, Climb heading 030° to LUF 4 DME, then climbing left turn on a heading between 320°CW to 360° from DER. Expect RADAR vectors on course from Luke RAPCON.

**Rwy 21L, 21R**, Climb heading 210° to LUF 8 DME, then climb on a heading between 180°CW to 222° from DER. Expect RADAR vectors on course from Luke RAPCON.

TAKE-OFF OBSTACLES:

**Rwy 3L**: Taxiing aircraft, 19' AGL/1126' MSL, 1221' from DER, 782' left of centerline. Taxiing aircraft, 19' AGL/1126' MSL, 1407' from DER, 609' left of centerline.

Weather equipment, 15' AGL/1117' MSL, 759' from DER, 505' right of centerline. Weather equipment, 15' AGL/1117' MSL, 1209' from DER, 505' right of centerline. Building, 20' AGL/1127' MSL, 1620' from DER, 925' left of centerline.

**Rwy 21L**: Taxiing aircraft, 38' AGL/1120' MSL, 1428' from DER, 774' left of centerline.

## MESA, AZ

FALCON FIELD (FFZ)

AMDT 4 10210 (FAA)

DEPARTURE PROCEDURE: use MESA DEPARTURE.

## MICHAEL AAF (KDPG),

DUGWAY PROVING GROUND, UT

.....Amdt 1, 09099  
**Rwy 12**, 4700-3\*

\* Or standard with minimum climb of 305 ft/NM to 6100.

DEPARTURE PROCEDURES: **Rwy 12** Climb via heading 122° to 6100, then right turn direct DPG NDB. Continue climb in DPG NDB holding pattern (Hold W, LT, 080° inbound) to 9600 before proceeding on course, or for climb in visual conditions: Cross Michael AAF, Dugway Proving Ground at or above 8900 before proceeding on course. **Rwy 30** Climb via heading 302° to 6100 then left turn direct DPG NDB, continue climb in DPG NDB holding pattern (Hold W, LT, 080°inbound) to 9600 before proceeding on course.

## MILFORD, UT

MILFORD MUNI/BEN AND JUDY BRISCOE

FIELD (MLF)

AMDT 2 12096 (FAA)

TAKE-OFF MINIMUMS: **Rwy 34**, std. w/min. climb of 487' per NM to 6500 or 1500-3 for climb in visual conditions.

DEPARTURE PROCEDURE: **Rwy 16**,climb direct MLF VORTAC, thence ...

... Aircraft departing on V235 or V21 southbound proceed on course.

... All other aircraft climb to 11000 on MLF VORTAC R-168, then right turn direct MLF VORTAC.

Continue climb-in-hold, right turns, 348°inbound to cross MLF VORTAC at or above MEA/MCA for route of flight. **Rwy 34**, climbing left turn to intercept MLF VORTAC R-310 to MLF VORTAC, thence...

... Aircraft departing on V235 or V21 southbound; proceed on course.

... All other aircraft, climb-in-hold, MLF VORTAC, right turns, 348°inbound to cross MLF VORTAC at or above MEA/MCA for Route of flight.

... or climb in visual conditions to cross Milford Muni/ Ben and Judy Briscoe Field airport southbound at or above 6400, then climb on MLF VORTAC R-345 to MLF VORTAC. Aircraft departing on V235 and V21 southbound; proceed on course. All other aircraft climb to 11000 on MLF VORTAC R-168, then, right turn direct MLF VORTAC. Continue climb in-hold, right turns, 348°inbound to cross MLF VORTAC at or above MEA/MCA for route of flight.

NOTE: **Rwy 16**, trees beginning 440' from DER, 332' right of centerline, up to 100' AGL/5159' MSL. Trees beginning 4912' from DER, 1451' right of centerline, up to 100' AGL/5179' MSL. **Rwy 34**, vehicles on roadway 231' from DER, across centerline, up to 15' AGL/5054' MSL. Trees beginning 3177' from DER, 508' left of centerline, up to 100' AGL/5119' MSL.

## MINDEN, NV

MINDEN-TAHOE (MEV)

AMDT 2 11349 (FAA)

TAKE-OFF MINIMUMS: **Rwys 12,16,30**,NA-Obstacles.

DEPARTURE PROCEDURE: **Rwy 34**, use MINDEN (RNAV) DEPARTURE.

31 MAY 2012 to 28 JUN 2012

31 MAY 2012 to 28 JUN 2012

12152

# TAKE-OFF MINIMUMS AND (OBSTACLE) DEPARTURE PROCEDURES

# TAKE-OFF MINIMUMS AND (OBSTACLE) DEPARTURE PROCEDURES

12152

## MOAB, UT

### CANYONLANDS FIELD

TAKE-OFF MINIMUMS: **Rwy 3**, std. with a min. climb of 320' per NM to 5800. **Rwy 21**, std. with a min. climb of 330' per NM to 5400.

DEPARTURE PROCEDURE: **Rwy 3**, turn left. **Rwy 21**, turn right climb to 6700 via OAB R-293, then climbing right turn direct OAB VOR/DME. Climb in OAB holding pattern (NW, left turns, 113° inbound) to 10000 then proceed on course.

NOTE: **Rwy 3**, tree 4383' from departure end of runway, 1507' right of centerline, 50' AGL/4729' MSL. Road 1749' from departure end of runway, 905' left of centerline, 15' AGL/4635' MSL. Tree 3914' from departure end of runway, 1166' right of centerline, 50' AGL/4690' MSL. Tree 1.25 NM from departure end of runway, 400' right of centerline, 50' AGL/4758' MSL. **Rwy 21**, pole 2026' from departure end of runway, 78' right of centerline, 80' AGL/4625' MSL. Pole 2061' from departure end of runway, 40' right of centerline, 80' AGL/4625' MSL. Pole 2095' from departure end of runway, 857' right of centerline, 80' AGL/4623' MSL. Pole 1980' from departure end of runway, 344' right of centerline, 80' AGL/4602' MSL.

## NELLIS AFB (KLSV)

### LAS VEGAS, NV

08241

**Rwy 3L/R**, 10,200-3° SR-SS

**Rwy 21L/R**, 10,200-3° SR-SS

Diverse departure not authorized.

MILITARY: Use published DP, if unable to comply with DP climb gradient file appropriate DP for intended destination and notify clearance delivery and request RADAR Vectors (Climb Gradient of 300' per NM until 12,000 for RADAR Vectors). If unable to comply with RADAR Vector climb gradient, A/C must depart VFR.

\* CIVIL: Use published DP, if unable to comply with DP climb gradient file appropriate DP for intended destination and notify clearance delivery and request RADAR Vectors (Climb Gradient of 330' per NM until 12,000 for RADAR Vectors). If unable to comply with RADAR Vectors climb gradient, A/C may use published weather minimums or depart VFR.

TAKE-OFF OBSTACLES: **RWY 3L**: Terrain 0' AGL/1870' MSL, 0' inward of DER, 500' left of centerline. Road 15' AGL/1934' MSL, 1321' from DER, 802' left of centerline. **RWY 3R**: C-5 on taxiway 65' AGL/1936' MSL, 1345' from DER, 822' right of centerline. Road 15' AGL/2014' MSL, 3929' from DER, 1404' right of centerline. **RWY 21L**: Trees 90' AGL/1949' MSL, 4594' from DER, 1596' right of centerline. Trees 90' AGL/1949' MSL, 4940' from DER, 541' right of centerline. Trees 60' AGL/1899' MSL 929' from DER, 724' left of centerline. Trees 60' AGL/1899' MSL, 946' from DER, 626' left of centerline. Trees 60' AGL/1899' MSL, 2720' from DER, 341' left of centerline. Trees 60' AGL/1899' MSL, 2514' from DER, 403' left of centerline.

**RWY 21R**: Terrain 0' AGL/1835' MSL, 0' inward of DER, 500' right of centerline. Trees 90' AGL/1949' MSL, 4594' from DER, 597' right of centerline. Building 45' AGL/1904' MSL, 2274' from DER, 1037' right of centerline. Road 15' AGL/1874' MSL, 1404' from DER, 465' right of centerline.

## NEPHI, UT

NEPHI MUNI (U14)

ORIG 11293 (FAA)

DEPARTURE PROCEDURE: Use NEPHI DEPARTURE.

## NOGALES, AZ

NOGALES INTL (OLS)

AMDT 2 09351 (FAA)

TAKE-OFF MINIMUMS: Use NOGALES DEPARTURE.

## OGDEN, UT

OGDEN-HINCKLEY (OGD)

AMDT 2 08101 (FAA)

TAKE-OFF MINIMUMS: **Rwys 7,16, NA**- Obstacles.

DEPARTURE PROCEDURE: **Rwys 3, 21, 25, 34**, Use EMONT DEPARTURE.

## PAGE, AZ

PAGE MUNI (PGA)

AMDT 2 08045 (FAA)

TAKE-OFF MINIMUMS: **Rwys 7, 25**, NA - obstacles

**Rwy 15**, 300-1 or std. w/min. climb of 252' per NM to 6500, or 1900-3 for climb in visual conditions.

DEPARTURE PROCEDURE: **Rwy 15**, climb via 157° heading to 6000, then climbing right turn to PGA VOR/DME. cross PGA VOR/DME at or above 7700. Continue climb in PGA VOR/DME holding pattern (hold NW, right turns, 147° inbound) to airway MEA, or climb in visual conditions: cross Page airport at or above 6100, before proceeding on course. **Rwy 33**, climb via 337° heading to 6000, then climbing left turn to PGA VOR/DME. Cross PGA VOR/DME at or above 7700. Continue climb in PGA VOR/DME holding pattern (hold NW, right turns, 147° inbound) to airway MEA.

NOTE: **Rwy 15**, terrain 192' from departure end of runway, 274' right of centerline, 4323' MSL, tree 1.07 NM from departure end of runway, 167' left of centerline, 4519 MSL, transmission line 1.96 NM from departure end of runway, 825' left of centerline, 100' AGL/4519' MSL, power line 4.00 NM from departure end of runway, 3606' right of centerline, 75' AGL/4819' MSL, power line 4.35 NM from departure end of runway, 3968' right of centerline, 75' AGL/4919' MSL, power line 5.36 NM from departure end of runway, 5039' right of centerline, 75' AGL/5119' MSL, power line 4.51 NM from departure end of runway, 4136' right of centerline, 75' AGL/5019' MSL, tree 4.52 NM from departure end of runway, 1508' right of centerline, 100' AGL/5173' MSL, AAO 4.58 NM from departure end of runway, 1617' right of centerline, 200' AGL/5187' MSL, AAO 5.15 NM from departure end of runway, 4456' left of centerline, 200' AGL/5190' MSL, tree 5.56 NM from departure end of runway, 4097' right of centerline, 30' AGL/5249' MSL, AAO 5.98 NM from departure end of runway, 653' left of centerline, 200' AGL/5440' MSL.

31 MAY 2012 to 28 JUN 2012

31 MAY 2012 to 28 JUN 2012

12152

# TAKE-OFF MINIMUMS AND (OBSTACLE) DEPARTURE PROCEDURES

# TAKE-OFF MINIMUMS AND (OBSTACLE) DEPARTURE PROCEDURES

12152

## PANGUITCH, UT

PANGUITCH MUNI (U55)  
ORIG 11153 (FAA)

TAKE-OFF MINIMUMS: **Rwy 18**, std. w/min. climb of 350' per NM to 9200 or 2200-3 for climb in visual conditions. **Rwy 36**, std. w/min. climb of 450' per NM to 9500 or 2200-3 for climb in visual conditions.

DEPARTURE PROCEDURE: **Rwy 18**, climb heading 185° to 9200 then left turn to intercept BCE VORTAC R-274, continue climb to 12000 to BCE VORTAC, or for climb in visual conditions: cross Panguitch Muni Airport southeast bound at or above 8800' MSL then via BCE R-320 to BCE VORTAC thence ... **Rwy 36**, climb heading 005° to 9500 then left turn to intercept BCE VORTAC R-323 (V257), continue climb to 12000 to BCE VORTAC, or for climb in visual conditions: cross Panguitch Muni Airport southeast bound at or above 8800' MSL then via BCE R-320 to BCE VORTAC thence...

...continue climb in BCE VORTAC holding pattern (hold southwest, right turn, 045° inbound) to cross BCE VORTAC at or above MEA for route of flight.

NOTE: **Rwy 36**, terrain 64' from DER, 426' right of centerline, 6775' MSL. Terrain 426' from DER, 565' right of centerline, 6779' MSL. **Rwy 18**, terrain beginning 114' from DER, 306' left of centerline, 6758' MSL. Terrain 26' from DER, 229' left of centerline 6756' MSL. Terrain 388' from DER, 91' left of centerline 6766' MSL. Terrain 316' from DER, 321' left of centerline 6766' MSL.

## PARKER, AZ

AVI SUQUILLA

TAKE-OFF MINIMUMS: **Rwy 1**, 800-1½. **Rwy 19**, 300-1. DEPARTURE PROCEDURE: **Rwy 19**, right turn. **Rwy 1**, left turn. Climb via R-067 to PKE VORTAC, to cross above 4500. Continue climb on course to MEA or assigned altitude.

## PAYSON, AZ

PAYSON

TAKE-OFF MINIMUMS: **Rwy 6**, std. with a min. climb of 360' per NM to 9300, or 2500-3 for climb in visual conditions. **Rwy 24**, std. with a min. climb of 375' per NM to 9300, or 2500-3 for climb in visual conditions.

DEPARTURE PROCEDURE: **Rwys 6, 24**, for climb in visual conditions: Cross Payson Airport at or above 7500, then proceed on course.

NOTE: **Rwy 24**, bush 15' from departure end of runway, 133' right of centerline, 6' AGL/5148' MSL. Tree 320' from departure end of runway, 183' right of centerline, 12' AGL/5154' MSL. Fence 85' from departure end of runway, 84' left of centerline, 4' AGL/5141' MSL. Tree 164' from departure end of runway, 126' left of centerline, 9' AGL/5147' MSL.

## PHOENIX, AZ

PHOENIX-DEER VALLEY

DEPARTURE PROCEDURE: Use DEER VALLEY DEPARTURE.

## PHOENIX SKY HARBOR INTL (PHX)

AMDT 4A 09071 (FAA)

TAKE-OFF MINIMUMS: **Rwy 26**, 700-3 or std. with a min. climb of 358' per NM to 2000.

DEPARTURE PROCEDURE: **Rwys 7L, 7R, 8**, climb via 078° heading to 3000, then climbing right turn direct PHOENIX (PXR) VORTAC. **Rwys 25L, 25R**, climb via 258° heading to 1550 then climbing right turn to join the PXR R-260 (V16) westbound, climb to 5000. **Rwy 26**, climb via 258° heading to 1550 then climbing left turn to join the PXR R-260 (V16) westbound, climb to 5000. Westbound departures continue climb on PXR R-260. All others, climbing right turn direct PXR VORTAC.

NOTE: **Rwy 7L**, building 1332' from DER, 798' left of centerline, 67' AGL/1176' MSL. **Rwy 7R**, rod 716' from DER, 184' right of centerline, 87' AGL/1196' MSL. **Rwy 8**, light standard 3530' from DER, 1207' left of centerline, 123' AGL/1232' MSL. Light standard 3479' from DER, 1003' left of centerline, 118' AGL/1227' MSL. **Rwy 25L**, light standard 1129' from DER, 774' left of centerline, 91' AGL/1200' MSL. ASDE-X equipment 411' from DER, 531' left of centerline, 29' AGL/1135' MSL. **Rwy 26**, light 59' from DER, 63' right of centerline, 16' AGL/1125' MSL. Pole 58' from DER, 90' right of centerline, 25' AGL/1125' MSL. Light 78' from DER of runway, 64' right of centerline, 18' AGL/1127' MSL. Light 38' from DER, 440' left of centerline, 24' AGL/1135' MSL. Light standard 77' from DER, 453' left of centerline, 27' AGL/1136' MSL. Light standard 74' from DER, 456' right of centerline, 33' AGL/1142' MSL. Light standard 77' from DER, 434' right of centerline, 31' AGL/1140' MSL. Tree 113' from DER, 294' right of centerline, 24' AGL/1133' MSL. Building 2.32 NM from DER, 3309' right of centerline, 406' AGL/1496' MSL. Building 2.28 NM from DER, 3612' right of centerline, 663' AGL/1750' MSL. Tree 234' from DER, 214' right of centerline, 24' AGL/1133' MSL. Light standard 64' from DER, 68' left of centerline, 39' AGL/1125' MSL. ASDE-X equipment 897' from DER, 413' right of centerline, 35' AGL/1141' MSL.

## PHOENIX-MESA GATEWAY (IWA)

AMDT 1 10042 (FAA)

DEPARTURE PROCEDURE: use PHOENIX DEPARTURE.

## PRESCOTT, AZ

ERNEST A. LOVE FIELD

TAKE-OFF MINIMUMS: **Rwy 12**, 2700-2 or std. with a min. climb of 460' per NM to 8100. **Rwy 21L**, 2700-2 or std. with a min. climb of 500' per NM to 8100. **Rwy 30**, 300-1 or std. with a min. climb of 300' per NM to 5200. **Rwy 3L, 21R, NA**.

DEPARTURE PROCEDURE: **Rwy 3R**, turn left heading 250° to intercept DRK R-305. **Rwy 12**, turn right direct DRK VORTAC. **Rwy 21L**, turn right heading 335° to intercept DRK R-305. **Rwy 30**, climb direct DRK VORTAC. All aircraft continue climb via DRK R-305 to 9000. Aircraft departing via DRK R-305 continue climb on course. All other aircraft turn right direct DRK VORTAC then climb on course.

31 MAY 2012 to 28 JUN 2012

31 MAY 2012 to 28 JUN 2012

12152

# TAKE-OFF MINIMUMS AND (OBSTACLE) DEPARTURE PROCEDURES

# TAKE-OFF MINIMUMS AND (OBSTACLE) DEPARTURE PROCEDURES

12152

## PRICE, UT

CARBON COUNTY RGNL/BUCK DAVIS FLD  
(PUC)

AMDT 4 09071 (FAA)

TAKE-OFF MINIMUMS: **Rwy 7, NA** - per flight check **Rwy 32**, std. w/ min. climb of 425' per NM to 7000, or 3400-3 for climb in visual conditions. **Rwy 36**, std. w/ min. climb of 400' per NM to 7200, or 3400-3 for climb in visual conditions.

DEPARTURE PROCEDURE: **Rwy 14**, climb on a heading between 126°CW to 193°; thence... **Rwy 18**, climb on a heading between 192°CW to 125°; thence... **Rwy 25**, climb on a heading between 176°CCW to 124°; thence... **Rwy 32**, climb to 7000 then climbing left turn on a heading between 175°CCW to 145°; thence... **Rwy 36**, climb to 6400 then climbing right turn on a heading between 141°CW to 184°; maintain 210K until completion of turn, thence...

...continue climb to assigned altitude for direction of flight. **Rwys 32, 36**, for climb in visual conditions cross Carbon County Rgnl/ Buck Davis Field at or above 9200 before proceeding on course.

NOTE: **Rwy 14**, multiple trees beginning 121' from DER, 3' left of centerline, up to 40' AGL/5839' MSL. **Rwy 25**, trees 515' from DER, 535' right of centerline, up to 40' AGL/5879' MSL. **Rwy 32**, trees 9544' from DER, 1644' left of centerline, up to 40' AGL/6900' MSL. Trees 11332' from DER, 74' right of centerline, up to 40' AGL/6800' MSL. **Rwy 36**, poles 2599' from DER, 615' left of centerline, 40' AGL/6079' MSL. Poles 2715' from DER, 668' right of centerline, 59' AGL/6098' MSL.

## PROVO, UT

PROVO MUNI

DEPARTURE PROCEDURE: Use PROVO DEPARTURE.

## RENO, NV

RENO/STEAD (RTS)

AMDT 3A 09183 (FAA)

TAKE-OFF MINIMUMS: CAT A,B only, CAT C, D NA.

**Rwys 8, 14**, 1300-2 or std. with a min. climb of 400' per NM to 6500. **Rwy 26**, 1900-2 or std. with a min. climb of 410' per NM to 7200. **Rwy 32**, 2300-2 or std. with a min. climb of 420' per NM to 7200.

DEPARTURE PROCEDURE: **Rwys 8, 32**, climbing right turn heading 100° and FMG VORTAC R-314 to FMG VORTAC. **Rwy 14**, left turn climb direct FMG VORTAC. **Rwy 26**, climbing right turn heading 050° and FMG VORTAC R-314 to FMG VORTAC. **All aircraft** climb in FMG VORTAC holding pattern (NE, right turns, 221° inbound) to depart FMG VORTAC; R-260 CWR-170 at or above 10000; R-171 CW R-195 at or above 10500; R-196 CWR-259 at or above 12000.

## RENO, NV (CON'T)

RENO/TAHOE INTL (RNO)

AMDT 4 07354 (FAA)

TAKE-OFF MINIMUMS: **Rwy 7, NA**-terrain. **Rwy 16L**, std. w/ min. climb of 730' per NM to 8000, or 600-1¼ w/ min. climb of 480' per NM to 8000, or 2700-3 for climb in visual conditions. **Rwy 16R**, std. w/ the following minimum climb requirements: 210 knots or less, 385' per NM to 8000; more than 210 knots, 420' per NM to 8900, or 2700-3 for climb in visual conditions. Resume normal speed after passing FMG VORTAC. **Rwy 25**, std. w/ min. climb of 470' per NM to 7800, or 2700-3 for climb in visual conditions. **Rwy 34L**, std. w/ min. climb of 320' per NM to 7000, or 2700-3 for climb in visual conditions. **Rwy 34R**, std. w/ min. climb of 480' per NM to 7000, or 500-1½ w/ min. climb of 320' per NM to 7000, or 2700-3 for climb in visual conditions.

DEPARTURE PROCEDURE: **Rwys 16L/R**, climb heading 164° to 6600 then climbing left turn direct FMG VORTAC, thence... or for climb in visual conditions: cross Reno/Tahoe Intl Airport at or above 7000 via heading 054° and FMG R-234 to FMG VORTAC, thence... **Rwy 25**, climb heading 254° to 5000 then climbing right turn direct FMG VORTAC, thence... or for climb in visual conditions: cross Reno/Tahoe Intl Airport at or above 7000 via heading 054° and FMG

R-234 to FMG VORTAC, thence... **Rwys 34L/R**, climb heading 344° to 7000 then climbing right turn direct FMG VORTAC, thence... or for climb in visual conditions: cross Reno/Tahoe Intl Airport at or above 7000 via heading 054° and FMG R-234 to FMG VORTAC, thence...

... **All aircraft**: continue climb in FMG VORTAC holding pattern (northeast, left turn, 221° inbound) to cross FMG VORTAC at or above MEA/MCA for route of flight.

NOTE: **Rwy 16L**, multiple poles, trees, bushes and terrain beginning 618' from departure end of runway, 133' left of centerline, up to 20' AGL/4961' MSL.

**Rwy 16R**, multiple trees 2784' from departure end of runway, 171' right of centerline, up to 20' AGL/4510' MSL. Multiple trees and terrain beginning 746' from departure end of runway, 380' left of centerline, up to 20' AGL/4703' MSL. **Rwy 25**, multiple trees and poles beginning 829' from departure end of runway, 201' right of centerline, up to 103' AGL/4523' MSL. Building 6023' from departure end of runway, 456' right of centerline, 152' AGL/4608' MSL. Fence 222' from departure end of runway, 270' right of centerline, up to 5' AGL/4415' MSL. Multiple trees and poles beginning 500' from departure end of runway, 31' left of centerline, up to 20' AGL/4506' MSL. **Rwy 34L**, multiple trees and poles beginning 1229' from departure end of runway, 180' right of centerline, up to 20' AGL/4498' MSL. Multiple trees beginning 1193' from departure end of runway, 331' left of centerline, up to 20' AGL/4489' MSL. **Rwy 34R**, multiple trees and poles beginning 1067' from departure end of runway, 172' right of centerline, up to 20' AGL/4497' MSL. Multiple trees and poles beginning 1230' from departure end of runway, 350' left of centerline, up to 20' AGL/4498' MSL. Building 1.2 NM from departure end of runway, 1730' right of centerline, 363' AGL/4780' MSL.

## RICHFIELD, UT

RICHFIELD MUNI (RIF)

AMDT 1 08157 (FAA)

DEPARTURE PROCEDURE: **Rwy 1**, use RICHFIELD (RNAV) DEPARTURE. **Rwy 19**, use HAMET (RNAV) DEPARTURE.

31 MAY 2012 to 28 JUN 2012

31 MAY 2012 to 28 JUN 2012

12152

# TAKE-OFF MINIMUMS AND (OBSTACLE) DEPARTURE PROCEDURES

# TAKE-OFF MINIMUMS AND (OBSTACLE) DEPARTURE PROCEDURES

12152

## ROOSEVELT, UT

### ROOSEVELT MUNI

TAKE-OFF MINIMUMS: **Rwy 25**, 700-3 or std. with a min. climb of 300' per NM to 6100.

DEPARTURE PROCEDURE: **Rwy 7**, turn right.

**Rwy 25**, turn left. **All aircraft**, climb direct MTU VORTAC. Aircraft departing MTU VORTAC R-040 CW R-150, climb on course. All others continue climb in MTU holding pattern (NE, right turns, 213° inbound) to cross MTU VORTAC; R-151 CW R-290 at or above 8000; R-291 CWR-039 at or above 10,000. Then climb on course.

## SAFFORD, AZ

### SAFFORD RGNL (SAD)

#### AMDT 1 10210 (FAA)

TAKE-OFF MINIMUMS: **Rwys 8, 26**, NA - Airspace.

DEPARTURE PROCEDURE: **Rwys 12, 30**, use SAFFORD RNAV DEPARTURE.

## ST. GEORGE, UT

### ST. GEORGE MUNI (SGU)

#### ORIG 11013 (FAA)

DEPARTURE PROCEDURE: Use JITKA DEPARTURE.

## ST. JOHNS, AZ

### ST. JOHNS INDUSTRIAL AIR PARK (SJN)

#### AMDT 1A 08241 (FAA)

TAKE-OFF MINIMUMS: **Rwy 21**, 400-2 or std. with a min. climb of 205' per NM to 6200.

DEPARTURE PROCEDURE: **Rwys 3, 32**, climbing right turn, **Rwys 14, 21**, climbing left turn. **All aircraft**, climb direct SJN VORTAC. Aircraft departing SJN VORTAC R-240 CW R-080 climb on course. All others continue climb in SJN VORTAC holding pattern (Hold NE, right turns, 239° inbound) to cross SJN VORTAC at or above 9000.

NOTE: **Rwy 14**, 5790' tower 350' right abeam departure end of runway.

## SALT LAKE CITY, UT

### SALT LAKE CITY INTL (SLC)

#### AMDT 11 10042 (FAA)

TAKE-OFF MINIMUMS: **Rwy 32**, 400-1 or std. w/ min. climb of 498' per NM to 4700.

DEPARTURE PROCEDURE: **Rwy 14**, climb to 10000 via heading 189° and FFU R-341 to FFU VORTAC before proceeding on course. **Rwy 16R**, climb to 10000 via heading 161° and FFU R-341 to FFU VORTAC before proceeding on course. **Rwy 16L**, climb to 10000 via heading 161° and FFU R-341 to FFU VORTAC before proceeding on course. **Rwy 17**, climb to 10000 via heading 166° and FFU R-341 to FFU VORTAC before proceeding on course. **Rwy 32**, climb to 9,000 via heading 359° and OGD R-153 to OGD VORTAC before proceeding on course. **Rwy 34L**, climb to 9000 via heading 341° and OGD R-153 to OGD VORTAC before proceeding on course. **Rwy 34R**, climb to 9000 via heading 336° and OGD R-153 to OGD VORTAC before proceeding on course.

NOTE: **Rwy 14**, antenna 1349' from DER, 544' left of centerline, 42' AGL/4263' MSL. **Rwy 16L**, vehicle on road 124' from DER, 14' right of centerline, 15' AGL/4239' MSL. Light pole 988' from DER, 726' right of centerline, 34' AGL/4254' MSL. Pole 1024' from DER, 689' right of centerline, 34' AGL/4254' MSL. **Rwy 17**, vehicles on road beginning 335' from DER, on centerline, up to 17' AGL/4241' MSL. **Rwy 32**, ATC tower 5266' from DER, 1767' left of centerline, 335' AGL/4549' MSL. Crane 5196' from DER, 1630' left of centerline, 240' AGL/4463' MSL. Flag on obstruction light 5153' from DER, 1619' left of centerline, 249' AGL/4463' MSL. Aircraft beginning 989' from DER, 722' left of centerline, up to 79' AGL/4306' MSL. **Rwy 34R**, post 13' from DER, 349' right of centerline, 3' AGL/4227' MSL. **Rwy 35**, post 56' from DER, 249' left of centerline, 2' AGL/4220' MSL.

## SOUTH VALLEY RGNL (U42)

#### AMDT 5 11069 (FAA)

TAKE-OFF MINIMUMS: **Rwy 16**, std. w/ a min. climb of 300' per NM to 10700. **Rwy 34**, std. with a min. climb of 330' per NM to 9000.

DEPARTURE PROCEDURE: **Rwy 16**, climbing left turn to 10700 on FFU R-341 to FFU VORTAC, continue climb in hold in FFU VORTAC holding pattern (hold South, right turns, 008° inbound) to cross FFU VORTAC at or above MEA for route of flight.

**Rwy 34**, climbing right turn to 9000 on TCH R-161 to TCH VORTAC, continue climb in hold in TCH VORTAC holding pattern (hold Northwest, right turns, 120° inbound) to cross TCH VORTAC at or above MEA for route of flight.

NOTE: **Rwy 16**, bush 671' from DER, 490' right of centerline, up to 25' AGL/4629' MSL. Vehicles on road 692' from DER, right and left of centerline, up to 17' AGL/4626' MSL. Poles beginning 1000' from DER, 465' right of centerline, up to 30' AGL/4638' MSL.

## SCOTTSDALE, AZ

### SCOTTSDALE (SDL)

#### AMDT 8 10042 (FAA)

DEPARTURE PROCEDURE: **Rwys 3, 21**, use MARICOPA DEPARTURE.

31 MAY 2012 to 28 JUN 2012

31 MAY 2012 to 28 JUN 2012

12152

# TAKE-OFF MINIMUMS AND (OBSTACLE) DEPARTURE PROCEDURES

# TAKE-OFF MINIMUMS AND (OBSTACLE) DEPARTURE PROCEDURES

12152

## SEDONA, AZ

SEDONA (SEZ)

AMDT 1 08101 (FAA)

TAKE-OFF MINIMUMS: **Rwy 3**, NA- Obstacles.DEPARTURE PROCEDURE: **Rwy 21**, Use OATES  
RNAV DEPARTURE.

## SHOW LOW, AZ

SHOW LOW RGNL (SOW)

AMDT 1 11013 (FAA)

DEPARTURE PROCEDURE: **Rwy 3**, climb on heading  
360° to 7800 before proceeding on course. **Rwy 6**, climb  
on heading 360° to 8100 before proceeding on course.**Rwy 21**, climb on heading 255° to 7700 before  
proceeding on course. **Rwy 24**, climb on heading 243° to  
7600 before proceeding on course.NOTE: **Rwy 3**, trees beginning 89' from DER, 429' left  
of centerline, up to 33' AGL/6413' MSL. **Rwy 21**, trees,  
tank, terrain, poles and buildings beginning 94' from  
DER, 5' left of centerline, up to 76' AGL/6519' MSL.  
Trees and terrain beginning 124' from DER, 25' right  
of centerline, up to 20' AGL/6431' MSL. **Rwy 24**, poles  
and catenary beginning 704' from DER, 4' left of  
centerline, up to 59' AGL/6439' MSL. Poles, catenary,  
electrical system, and terrain beginning 53' from DER,  
78' right of centerline, up to 58' AGL/6438' MSL.

## SPRINGERVILLE, AZ

SPRINGERVILLE MUNI

TAKE-OFF MINIMUMS: **Rwy 21**, 1000-2 or std. with a  
min. climb of 360' per NM to 8400.DEPARTURE PROCEDURE: **Rwys 3, 11**, climbing left  
turn to 8400 via heading 360° before proceeding on  
course. **Rwys 21, 29**, climbing right turn to 8400 via 360°  
before proceeding on course.

## TAYLOR, AZ

TAYLOR MUNI (TYL)

AMDT 1 11125 (FAA)

TAKE-OFF MINIMUMS: **Rwy 21**, 300-1 or std. w/min.  
climb of 290' per NM to 6100.DEPARTURE PROCEDURE: **Rwy 3**, climb heading 030°  
to 8000 before turning on course. **Rwy 21**, climb heading  
210° to 8000 before turning on course.NOTE: **Rwy 3**, vehicles on road beginning 1823' from  
DER, 698' right of centerline, up to 17' AGL/5726'  
MSL. Power lines crossing departure course 1000'  
from DER. **Rwy 21**, trees beginning 1132' from DER,  
316' right of centerline, up to 12' AGL/5871' MSL.

## TONOPAH, NV

TONOPAH

TAKE-OFF MINIMUMS: **Rwys 11, 29**, NA. **Rwys 15, 33**,  
2600-2 or std. with a min. climb of 260' per NM to 8000.DEPARTURE PROCEDURE: **Rwy 15**, turn left. **Rwy 33**,  
turn right. Climb direct TPH VORTAC. Continue climb  
in holding pattern (NE, right turns, 246° inbound) to  
depart TPH VORTAC at or above 8000. Climb on course  
to MEA or assigned altitude.

## TONOPAH TEST RANGE (KTNX)

TONOPAH, NV. . . . . AMDT 1 12096

DEPARTURE PROCEDURE: **Rwy 14**: 1000-3 with  
minimum climb of 320 ft/NM to 10,700 or 2700-3 for Climb  
in Visual Conditions. Climb on a heading between 325° CW  
to 155° from departure end of runway or Climb in Visual  
Conditions to cross KZ- KTNX airport at or above 8100  
MSL before proceeding on course. **Rwy 32**: 1000-3 with  
minimum climb of 260 ft/NM to 5900 or 2700-3 for Climb in  
Visual Conditions. Climb on a heading between 295° CW to  
005° from departure end of runway or Climb in Visual  
Conditions to cross KZ-KTNX airport at or above 8100  
MSL before proceeding on course. TAKE-OFFOBSTACLES: **Rwy 14**, Terrain, 5582' MSL, 1204' from  
DER, 823' right of centerline. Terrain, 5565' MSL, 63' from  
DER, 517' right of centerline. Terrain, 5564' MSL, 46' from  
DER, 480' right of centerline. Terrain, 5561' MSL, 0' from  
DER, 353' right of centerline. Terrain, 5558' MSL, 62' from  
DER, 200' right of centerline. Terrain, 5561' MSL, 14' from  
DER, 292' right of centerline. Terrain, 5561' MSL, 0' from  
DER, 287' right of centerline. Terrain, 5559' MSL, 0' from  
DER, 222' right of centerline. Surveyed terrain, 5560' MSL,  
215' from DER, 427' right of centerline. **Rwy 32**, Terrain,  
5476' MSL, 0' from DER, 500' left of centerline. Terrain,  
5476' MSL, 19' from DER, 465' left of centerline. Terrain,  
5476' MSL, 110' from DER, 529' left of centerline.

## TOOELE, UT

BOLINDER FIELD-TOOELE VALLEY

TAKE-OFF MINIMUMS: **Rwy 17**, std. with a min. climb of  
490' per NM to 11000. **Rwy 35**, std. with a min. climb of  
360' per NM to 9000.

DEPARTURE PROCEDURE: Use STACO DEPARTURE.

NOTE: **Rwy 17**, tree 794' from departure end of runway, 277'  
right of centerline, 35' AGL/4380' MSL. Tree 967' from  
departure end of runway, 432' right of centerline, 35' AGL/  
4394' MSL. Tree 1023' from departure end of runway, 313'  
right of centerline, 35' AGL/4395' MSL.

## TUCSON, AZ

MARANA RGNL

TAKE-OFF MINIMUMS: **Rwys 3, 12**, N/A-ObstaclesDEPARTURE PROCEDURE: **Rwy 21**, climb to 6500 via  
heading 360° and TUS R-308 to TOTEC Int/TUS 57 DME,  
then as filed. **Rwy 30**, climb to 6500 via heading 303°  
intercept TUS R-308 above 3500, to TOTEC INT/TUS 57  
DME, then as filed.NOTE: **Rwy 21**, road 192' from departure end of runway, 527'  
left of centerline 15' AGL/2034' MSL.

## RYAN FIELD (RYN)

AMDT 3 10210 (FAA)

TAKE-OFF MINIMUMS: **Rwys 6L, 15, 24R, 33**, NA, ATC.  
DEPARTURE PROCEDURE: **Rwys 6R, 24L**, use ALMON  
DEPARTURE.

31 MAY 2012 to 28 JUN 2012

31 MAY 2012 to 28 JUN 2012

12152

# TAKE-OFF MINIMUMS AND (OBSTACLE) DEPARTURE PROCEDURES

# TAKE-OFF MINIMUMS AND (OBSTACLE) DEPARTURE PROCEDURES

12152

## TUCSON, AZ (CON'T)

TUCSON INTL (TUS)

AMDT 4A 08241 (FAA)

TAKE-OFF MINIMUMS: **Rwy 3**, 300-1¼ or std. w/ min. climb of 228' per NM to 3000.

DEPARTURE PROCEDURE: **Rwys 3, 29L, 29R**, climbing right turn direct to TUS VORTAC. **Rwys 11L, 11R** climb via runway heading to 4000 then climbing left turn direct TUS VORTAC. **Rwy 21**, climbing left turn direct to TUS VORTAC. All aircraft continue climbing in holding pattern (NW, right turns, 128° inbound) to depart TUS VORTAC at or above 9000.

NOTE: **Rwy 3**, tower 9215' from departure end of runway, 1689' left of centerline, 246' AGL/2831' MSL.

## VERNAL, UT

VERNAL RGNL

TAKE-OFF MINIMUMS: **Rwy 16**, 1500-2 or std with a min. climb of 250' per NM to 7000'. **Rwy 25**, 1500-2 or std. with a min. climb of 390' per NM to 7000. **Rwy 34**, 1600-2 pr std. with a min. climb of 330' per NM to 7000'.

DEPARTURE PROCEDURE: **Rwys 7, 34**, turn right. **Rwys 16, 25**, turn left. All aircraft climb direct VEL. Aircraft departing V391 S-bound climb on course. All others climb in holding pattern (SE, right turns, 322° inbound). Aircraft SW-bound V208 depart VEL at or above 8400', all others depart VEL at or above 9500'. Continue climb on course to MEA or assigned altitude.

## WENDOVER, UT

WENDOVER

TAKE-OFF MINIMUMS: **Rwy 26**, standard with a min. climb of 300' per NM to 7000. **Rwy 30**, NA.

DEPARTURE PROCEDURE: **Rwys 8, 12, 26**, climbing left turn direct BVL VORTAC. Aircraft departing BVL VORTAC R-330 CW R-150 climb on course. All others continue climb in BVL VORTAC holding pattern (Hold NE right turns, 247° inbound) to cross at or above 7400, then climb on course.

## WILLCOX, AZ

COCHISE COUNTY

DEPARTURE PROCEDURE: **Rwy 3**, turn right. **Rwy 21**, turn left. All aircraft climb direct CIE VORTAC.

## WINDOW ROCK, AZ

WINDOW ROCK

TAKE-OFF MINIMUMS: **Rwy 2**, 700-2 or std. with a min. climb of 500' per NM to 8000. **Rwy 20**, 600-2 or std. with a min. climb of 260' per NM to 8200.

DEPARTURE PROCEDURE: **Rwy 2**, turn right. **Rwy 20**, turn left direct to GUP VORTAC before proceeding on course.

NOTE: **Rwy 2**, terrain 3832' from departure end of runway, 1025' right of centerline, 6926' MSL. Poles 5220' from departure end of runway, 245' right of centerline, 180' AGL/6922' MSL. Tower 7067' from departure end of runway, 3072' left of centerline, 71' AGL/7316' MSL. Terrain 7449' from departure end of runway, 1612' left of centerline, 6991' MSL. Terrain 8776' from departure end of runway, 1851' left of centerline, 7109' MSL. Tree 9665' from departure end of runway, 1326' right of centerline, 7340' MSL. Tree 11326' from departure end of runway, 355' left of centerline, 7351' MSL. **Rwy 20**, trees 1018' from departure end of runway, 620' left of centerline, 30' AGL/ 6768' MSL.

## WINNEMUCCA, NV

WINNEMUCCA MUNI

TAKE-OFF MINIMUMS: **Rwy 2**, 2500-2 or std. with a min. climb of 450' per NM to 6800. **Rwys 14, 20**, 3200-2 or std. with a min. climb of 520' per NM to 7500.

DEPARTURE PROCEDURE: **Rwys 14, 20**, turn right. **Rwy 2**, turn left. **Rwy 32**, climb straight ahead. All aircraft climb via INA R-326 to 6700 or above within 12 NM, then climbing left turn return to INA VOR/DME via R-326. Continue climb in INA VOR/DME holding pattern (hold NW, right turns, 146° inbound) to depart INA VOR/DME at or above 11000. Southbound aircraft continue via INA R-146 direct Fesko Int. Northbound aircraft continue via INA R-326 and SDOR-144 direct SDO VORTAC.

## YUMA MCAS/ YUMA INTL(KNYL)

YUMA, AZ . . . . . 09323

Diverse departures not auth between 360° CW 055° from 25 NM to 30 NM.

**Rwy 3L**: Cross DER at or above 35' AGL/228' MSL. Diverse departures auth. Fr 083° CW 107°, std with minimum climb of 225'/NM to 3500'.

**Rwy 3R**: Cross DER at or above 35' AGL/242' MSL. Diverse departures auth. Fr 083° CW 107°, std with minimum climb of 225'/NM to 3500'.

**Rwy 21L**: Cross DER at or above 35' AGL/223' MSL. Diverse departures auth.

**Rwy 21R**: Cross DER at or above 35' AGL/227' MSL. Diverse departures auth.

**Rwy 8**: Cross DER at or above 35' AGL/231' MSL. Diverse departures auth. Fr 069° CW 123°, std with minimum climb of 230'/NM to 3500'.

**Rwy 26**: Cross DER at or above 35' AGL/230' MSL. Diverse departures auth.

**Rwy 17**: Cross DER at or above 35' AGL/217' MSL. Diverse departures auth. Fr 068° CW 109°, std with minimum climb of 220'/NM to 3500'.

**Rwy 35**: Cross DER at or above 35' AGL/231' MSL. Diverse departures auth.

31 MAY 2012 to 28 JUN 2012

31 MAY 2012 to 28 JUN 2012

12152

# TAKE-OFF MINIMUMS AND (OBSTACLE) DEPARTURE PROCEDURES