

BEAHR THREE ARRIVAL (RNAV)
(BEAHR.BEAHR3) 03APR14

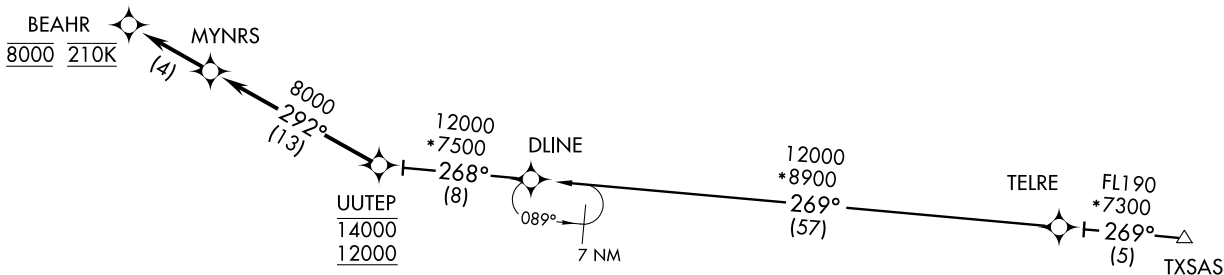
(BEAHR.BEAHR3) 17117
BEAHR THREE ARRIVAL (RNAV)

AL-134 (FAA)

EL PASO INTL (EILP)
EL PASO, TEXAS

EL PASO D-ATIS
120.0 254.3
EL PASO APP CON
124.25 298.85
ALBUQUERQUE CENTER
135.2 292.15

- NOTE: RADAR required.
- NOTE: RNAV 1.
- NOTE: DME/DME/IRU or GPS required.
- NOTE: Turbojet aircraft only.
- NOTE: Expect RNP approach or RADAR vectors to final approach course prior to BEAHR.



ARRIVAL ROUTE DESCRIPTION

TXSAS TRANSITION (TXSAS.BEAHR3)

From UUTEP on track 292° to MYNRS, then on track 292° to BEAHR, cross BEAHR at 8000 at 210K, expect RNAV (RNP) approach or RADAR vectors to final approach course.

NOTE: Chart not to scale.

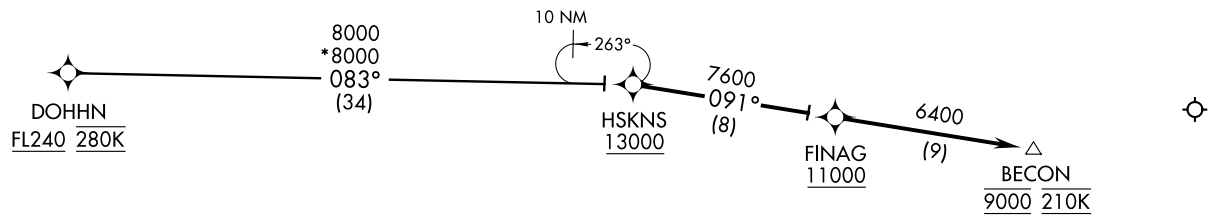
EL PASO, TEXAS
EL PASO INTL (EILP)

ARRIVAL ROUTE DESCRIPTION

DOHHN TRANSITION (DOHHN.HSKNS1)

LANDING RWY 4: From HSKNS on track 091° to FINAG, cross FINAG at or above 11000, then on track 091° to BECON, cross BECON at 9000 at 210K, expect RNAV (RNP) approach or RADAR vectors to final approach course.

EL PASO D-ATIS
120.0 254.3
EL PASO APP CON
124.25 298.85
ALBUQUERQUE CENTER
135.875 292.15



- NOTE: RADAR required.
- NOTE: RNAV 1.
- NOTE: DME/DME/IRU or GPS required.
- NOTE: Turbojet aircraft only.
- NOTE: For Non-RNP aircraft, expect RADAR vectors to final approach course.
- NOTE: Expect RNP approach clearance or RADAR vectors to final approach prior to BECON.

NOTE: Chart not to scale.

HSKNS ONE ARRIVAL (RNAV)
(HSKNS.HSKNS1) 03APR14

(HSKNS.HSKNS1) 17117
HSKNS ONE ARRIVAL (RNAV)

AL-134 (FAA)

EL PASO, TEXAS
EL PASO INTL (EILP)

EL PASO INTL (EILP)
EL PASO, TEXAS

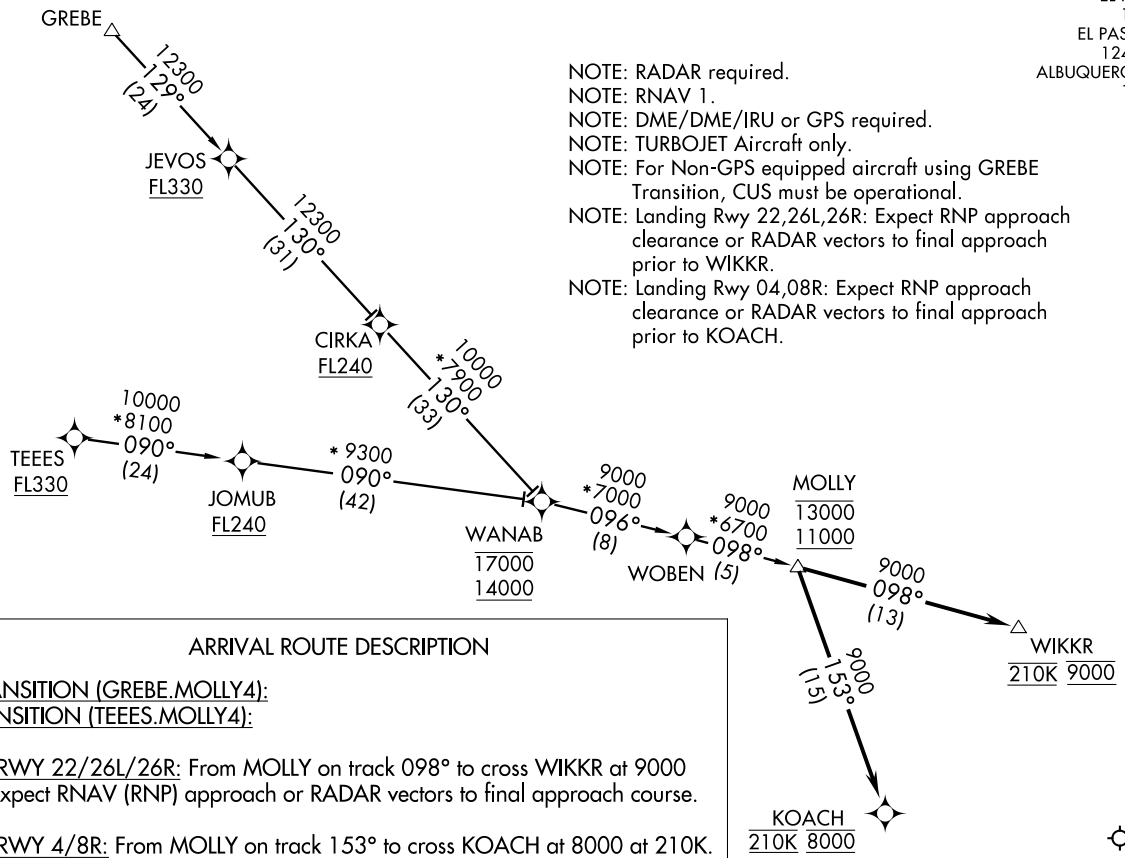
MOLLY FOUR ARRIVAL (RNAV)
(MOLLY.MOLLY4) 150CT15

EL PASO D-ATIS
120.0 254.3
EL PASO APP CON
124.25 298.85
ALBUQUERQUE CENTER
128.2 285.5

(MOLLY.MOLLY4) 17117
MOLLY FOUR ARRIVAL (RNAV)

AL-134 (FAA)

EL PASO INTL (EILP)
EL PASO, TEXAS



- NOTE: RADAR required.
- NOTE: RNAV 1.
- NOTE: DME/DME/IRU or GPS required.
- NOTE: TURBOJET Aircraft only.
- NOTE: For Non-GPS equipped aircraft using GREBE Transition, CUS must be operational.
- NOTE: Landing Rwy 22,26L,26R: Expect RNP approach clearance or RADAR vectors to final approach prior to WIKKR.
- NOTE: Landing Rwy 04,08R: Expect RNP approach clearance or RADAR vectors to final approach prior to KOACH.

ARRIVAL ROUTE DESCRIPTION

GREBE TRANSITION (GREBE.MOLLY4):
TEEES TRANSITION (TEEES.MOLLY4):

LANDING RWY 22/26L/26R: From MOLLY on track 098° to cross WIKKR at 9000 at 210K. Expect RNAV (RNP) approach or RADAR vectors to final approach course.

LANDING RWY 4/8R: From MOLLY on track 153° to cross KOACH at 8000 at 210K. Expect RNAV (RNP) approach or RADAR vectors to final approach course.

EL PASO, TEXAS
EL PASO INTL (EILP)

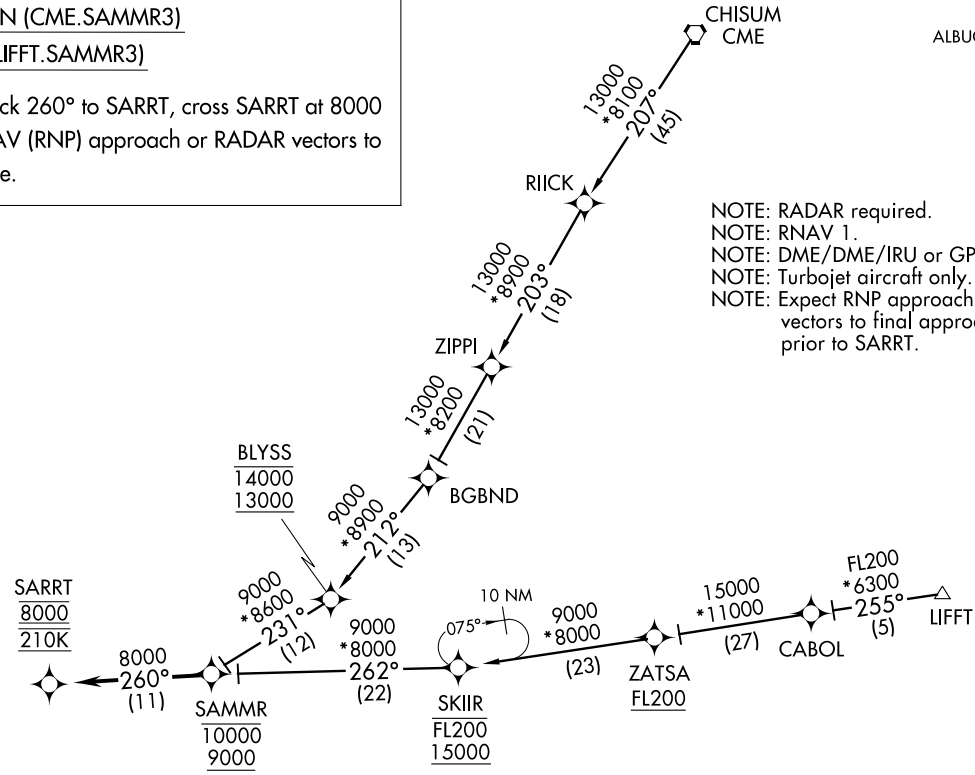
ARRIVAL ROUTE DESCRIPTION

CHISUM TRANSITION (CME.SAMMR3)
LIFFT TRANSITION (LIFFT.SAMMR3)

From SAMMR on track 260° to SARRT, cross SARRT at 8000 at 210K, expect RNAV (RNP) approach or RADAR vectors to final approach course.

EL PASO D-ATIS
 120.0 254.3
 EL PASO APP CON
 124.25 298.85
 ALBUQUERQUE CENTER
 135.87 292.15

NOTE: RADAR required.
 NOTE: RNAV 1.
 NOTE: DME/DME/IRU or GPS required.
 NOTE: Turbojet aircraft only.
 NOTE: Expect RNP approach or radar vectors to final approach course prior to SARRT.



SAMMR THREE ARRIVAL (RNAV)
 (SAMMR.SAMMR3) 03APR14

EL PASO, TEXAS
 EL PASO INTL (EILP)

(SAMMR.SAMMR3) 17117
 SAMMR THREE ARRIVAL (RNAV)
 AL-134 (FAA)

EL PASO INTL (EILP)
 EL PASO, TEXAS

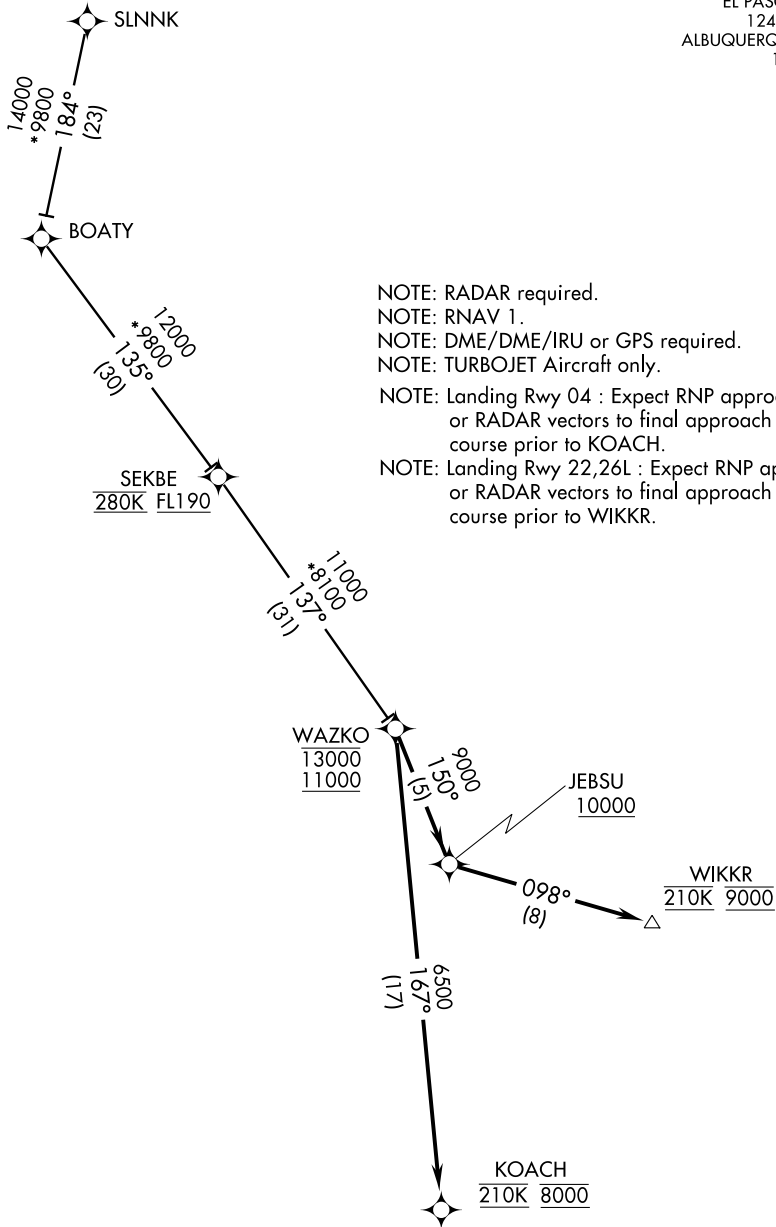
NOTE: Chart not to scale.

(WAZKO.WAZKO1) 17117
WAZKO ONE ARRIVAL (RNAV)

AL-134 (FAA)

EL PASO INTL (ELP)
 EL PASO, TEXAS

EL PASO D-ATIS
 120.0 254.3
 EL PASO APP CON
 124.25 298.85
 ALBUQUERQUE CENTER
 128.2 285.5



NOTE: RADAR required.
 NOTE: RNAV 1.
 NOTE: DME/DME/IRU or GPS required.
 NOTE: TURBOJET Aircraft only.
 NOTE: Landing Rwy 04 : Expect RNP approach or RADAR vectors to final approach course prior to KOACH.
 NOTE: Landing Rwy 22,26L : Expect RNP approach or RADAR vectors to final approach course prior to WIKKR.

SC-3, 12 OCT 2017 to 09 NOV 2017

SC-3, 12 OCT 2017 to 09 NOV 2017

(NARRATIVE ON FOLLOWING PAGE)

NOTE: Chart not to scale.

WAZKO ONE ARRIVAL (RNAV)
 (WAZKO.WAZKO1) 03APR14

EL PASO, TEXAS
 EL PASO INTL (ELP)

ARRIVAL ROUTE DESCRIPTION

SLNNK TRANSITION (SLNNK.WAZKO1):

LANDING RWY 4: From WAZKO on track 167° to KOACH at 8000 and at 210K. Expect RNAV (RNP) approach or RADAR vectors to final approach course.

LANDING RWY 8R: From WAZKO on track 167° to KOACH at 8000 and at 210K. Expect RADAR vectors to final approach course.

LANDING RWY 22/26L: From WAZKO on track 150° to cross JEBSU at or above 10000, then on track 098° to cross WIKKR at 9000 and at 210K. Expect RNAV (RNP) approach or RADAR vectors to final approach course.

LANDING RWY 26R: From WAZKO on track 150° to cross JEBSU at or above 10000, then on track 098° to cross WIKKR at 9000 and at 210K. Expect RADAR vectors to final approach course.

SC-3, 12 OCT 2017 to 09 NOV 2017

SC-3, 12 OCT 2017 to 09 NOV 2017