

WAAS CH <b>65735</b> <b>W16A</b>	APP CRS <b>165°</b>	Rwy Idg TDZE Apt Elev	<b>6601</b> <b>5423</b> <b>5423</b>
--	------------------------	-----------------------------	---

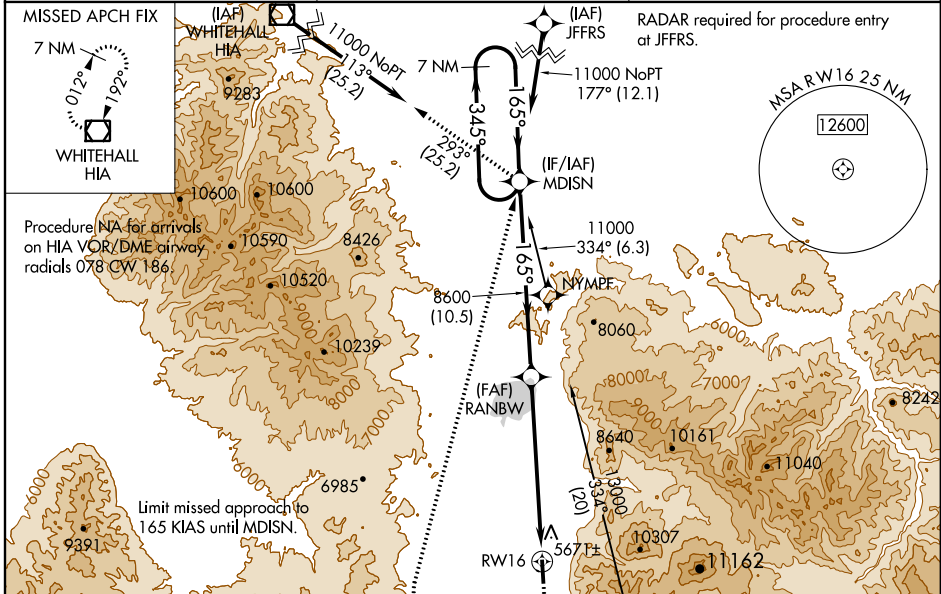
# RNAV (GPS) RWY 16

ENNIS-BIG SKY (EKS)

**⚠** When local altimeter setting not received procedure NA. For uncompensated Baro-VNAV systems, LNAV/VNAV NA below -26°C (-14°F) or above 54°C (130°F). Circling NA east of Rwy 16-34. DME/DME RNP: 0.3 NA. Helicopter visibility reduction below 1 SM NA. Night Landing: Rwy 16, operational VGSI required, remain on or above VGSI glidepath until threshold.  
**\*** Missed approach requires a minimum climb of 311 feet per NM to 8620.

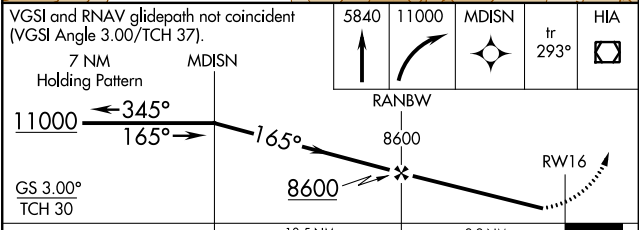
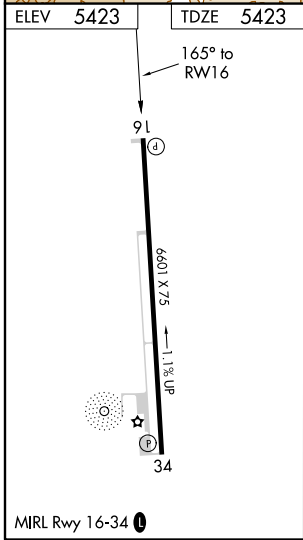
**MISSED APPROACH:** Climb to 5840 then climbing right turn to 11000 direct MDISN and on track 293° to HIA VOR/DME and hold.

AWOS-AV <b>119.85</b>	BIG SKY APP CON * <b>118,975 226,675</b>	AUNICOM <b>122.8 (CTAF) 0</b>
--------------------------	---	----------------------------------



NW-1, 08 JAN 2015 to 05 FEB 2015

NW-1, 08 JAN 2015 to 05 FEB 2015



CATEGORY	A	B	C	D
LPV DA*	5698-1 275 (300-1)			NA
LPV DA	7168-3 1745 (1800-3)			NA
LNAV/VNAV DA	7268-3 1845 (1900-3)			NA
LNAV MDA	7280-1¼ 1857 (1900-1¼)	7280-1½ 1857 (1900-1½)	7280-3 1857 (1900-3)	NA
<b>C</b> CIRCLING	7280-1¼ 1858 (1900-1¼)	7280-1½ 1858 (1900-1½)	7280-3 1858 (1900-3)	NA