

LOC/DME I-DXR <b>111.55</b> Chan <b>52 (Y)</b>	APP CRS <b>087°</b>	Rwy Idg <b>4054</b> TDZE <b>457</b> Apt Elev <b>458</b>
--	------------------------	---

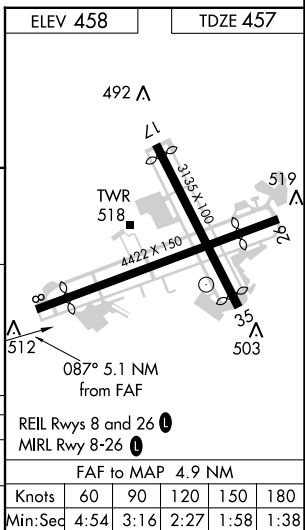
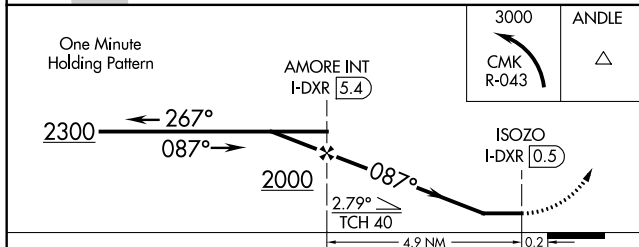
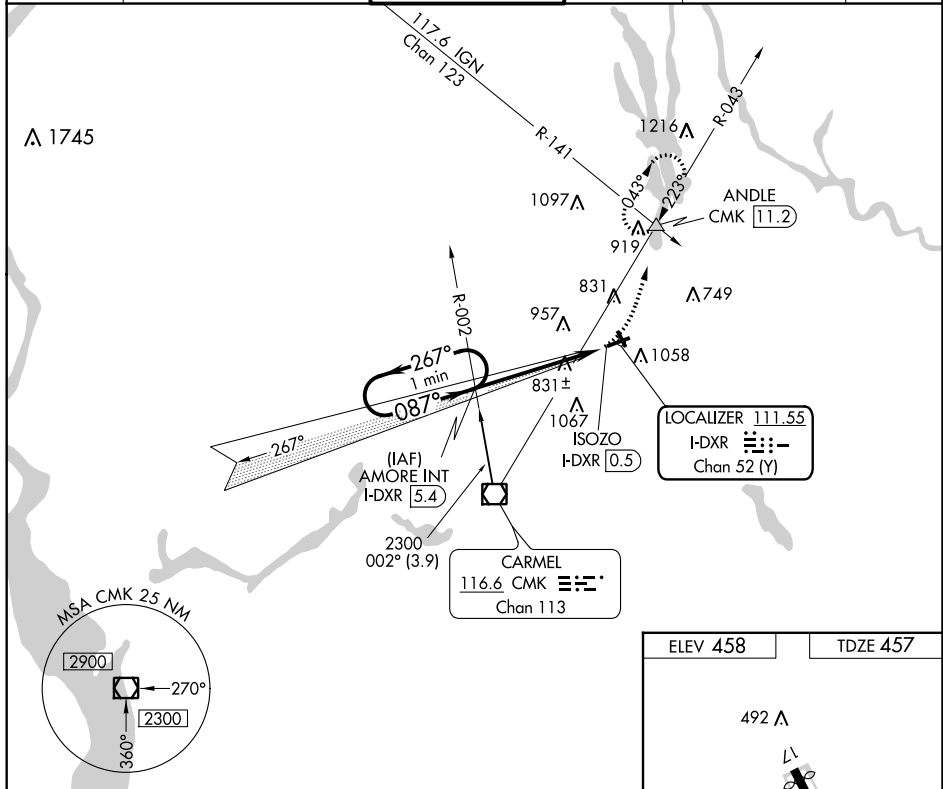
# LOC RWY 8

DANBURY MUNI (DXR)

**⚠** Circling NA south of Rwy 8-26. When local altimeter setting not received, use Waterbury-Oxford altimeter setting and increase all MDA 80 feet, and increase Circling visibility Cat B and Cat C 1/4 mile. Visibility reduction by helicopters NA.

**MISSED APPROACH:** Climbing left turn to 3000 via CMK R-043 to ANGLE INT/CMK 11.2 DME and hold, continue climb-in-hold to 3000.

ATIS <b>127.75</b>	NEW YORK APP CON <b>126.4 257.65</b>	<b>DANBURY TOWER * 119.4</b> (CTAF)	GND CON <b>121.6</b>	CLNC DEL <b>128.6</b> (When tower closed)	UNICOM <b>122.95</b>
-----------------------	---	---	-------------------------	---	-------------------------



CATEGORY	A	B	C	D
S-8	1100-1	643 (700-1)	1100-1 3/4 643 (700-1 3/4)	1100-2 643 (700-2)
CIRCLING	1380-1 1/4	922 (1000-1 1/4)	1380-2 3/4 922 (1000-2 3/4)	1380-3 922 (1000-3)

NE-1, 14 SEP 2017 to 12 OCT 2017

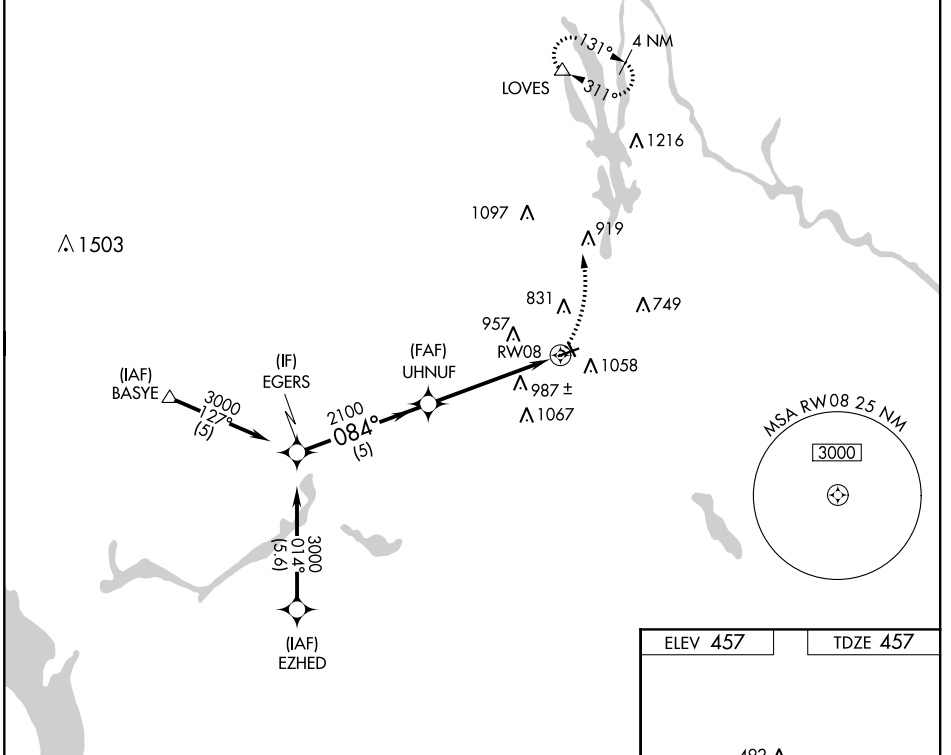
NE-1, 14 SEP 2017 to 12 OCT 2017

WAAS CH <b>99736</b> <b>W08A</b>	APP CRS <b>084°</b>	Rwy Idg <b>4055</b> TDZE <b>457</b> Apt Elev <b>457</b>
--	------------------------	---

# RNAV (GPS) RWY 8

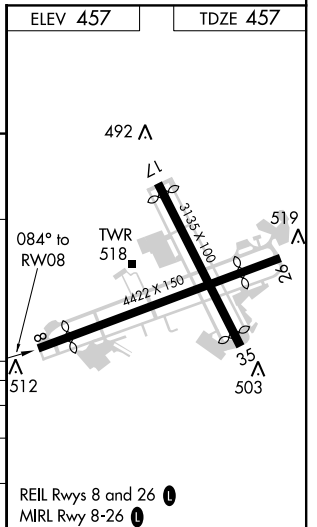
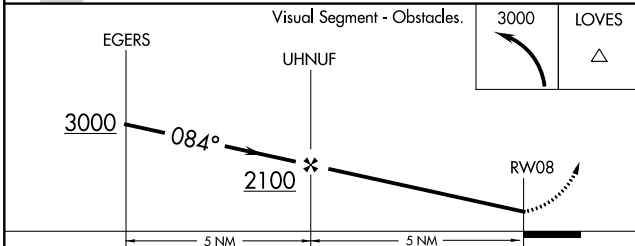
DANBURY MUNI (DXR)

<p><b>⚠</b> Circling to Rwy 17, 26 NA at night. Circling NA S of Rwy 8-26.  <b>⚠</b> Rwy 8 helicopter visibility reduction below 1 SM NA.                  DME/DME RNP-0.3 NA.</p>		<p>MISSED APPROACH: Climbing left turn to 3000 direct LOVES and hold.</p>			
ATIS <b>127.75</b>	NEW YORK APP CON <b>126.4 257.65</b>	DANBURY TOWER ★ <b>119.4</b> (CTAF)	GND CON <b>121.6</b>	CLNC DEL <b>128.6</b> (When tower closed)	UNICOM <b>122.95</b>



NE-1, 14 SEP 2017 to 12 OCT 2017

NE-1, 14 SEP 2017 to 12 OCT 2017



CATEGORY	A	B	C	D
LP MDA	1180-1	723 (800-1)	1180-1 <sup>7</sup> / <sub>8</sub>	723 (800-1 <sup>7</sup> / <sub>8</sub> )
LNAV MDA	1240-1 783 (800-1)	1240-1 <sup>1</sup> / <sub>4</sub> 783 (800-1 <sup>1</sup> / <sub>4</sub> )	1240-2 <sup>1</sup> / <sub>2</sub>	783 (800-2 <sup>1</sup> / <sub>2</sub> )
<b>C</b> CIRCLING	1240-1 783 (800-1)	1260-1 <sup>1</sup> / <sub>4</sub> 803 (900-1 <sup>1</sup> / <sub>4</sub> )	1300-2 <sup>1</sup> / <sub>2</sub> 843 (900-2 <sup>1</sup> / <sub>2</sub> )	1540-3 1083 (1100-3)

REIL Rwy 8 and 26 **Ⓛ**  
MIRL Rwy 8-26 **Ⓛ**

APP CRS <b>053°</b>	Rwy Idg TDZE Apt Elev	<b>NA</b> <b>NA</b> <b>457</b>
------------------------	-----------------------------	--------------------------------------

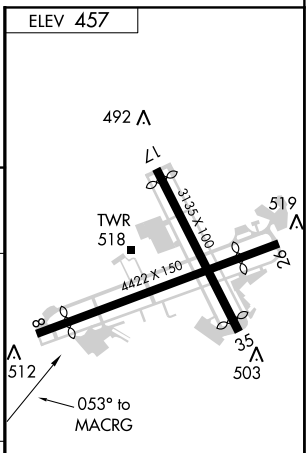
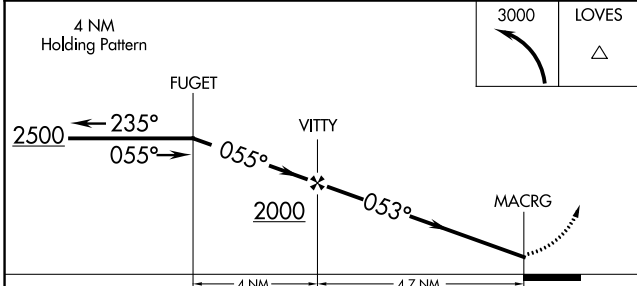
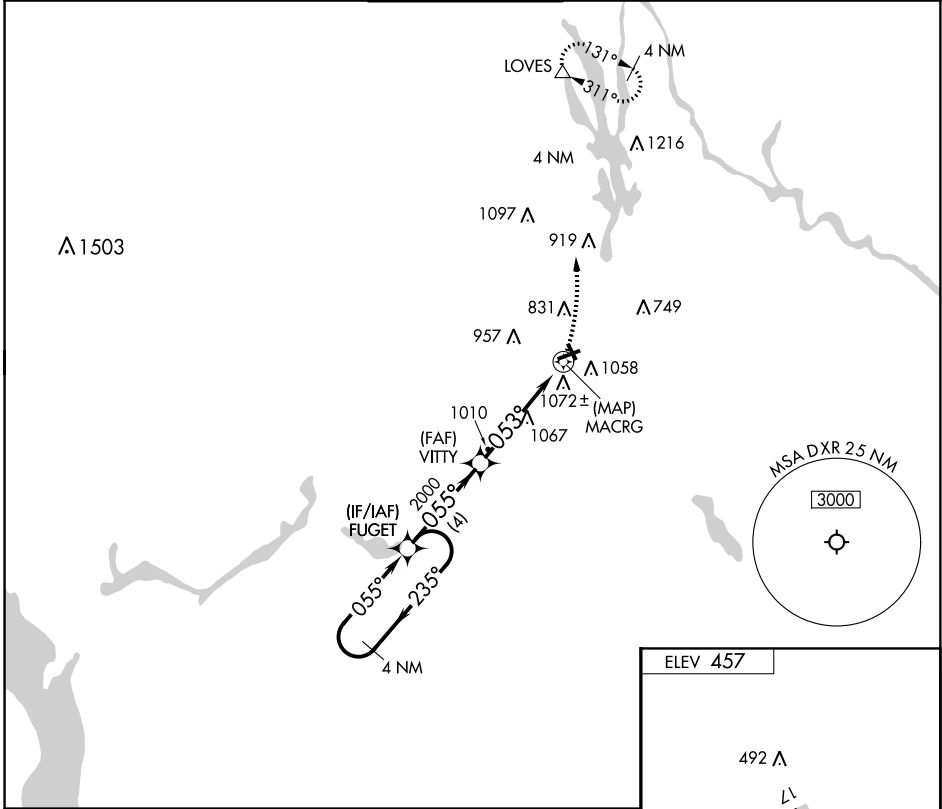
# RNAV (GPS)-A

DANBURY MUNI (DXR)

**⚠** Circling NA south of Rwy 8-26. Rwy 8, 17, 26 helicopter visibility reduction below 1 SM NA. DME/DME RNP-0.3 NA. Procedure NA at night.

**MISSED APPROACH:** Climbing left turn to 3000 direct LOVES and hold.

ATIS <b>127.75</b>	NEW YORK APP CON <b>126.4 257.65</b>	DANBURY TOWER ★ <b>119.4</b> (CTAF)	GND CON <b>121.6</b>	CLNC DEL <b>128.6</b> (When tower closed)	UNICOM <b>122.95</b>
-----------------------	---	--	-------------------------	---	-------------------------



CATEGORY	A	B	C	D
<b>C</b> CIRCLING	1340-1¼	883 (900-1¼)	1340-2¾ 883 (900-2¾)	1540-3 1083 (1100-3)

REIL Rwy 8 and 26 **Ⓛ**  
MIRL Rwy 8-26 **Ⓛ**

NE-1, 14 SEP 2017 to 12 OCT 2017

NE-1, 14 SEP 2017 to 12 OCT 2017