

WAAS CH <b>99518</b> W17A	APP CRS <b>175°</b>	Rwy Idg TDZE Apt Elev	<b>5001</b> <b>699</b> <b>699</b>
---------------------------------	------------------------	-----------------------------	---

# RNAV (GPS) RWY 17

DURANT RGNL - EAKER FIELD (DUA)

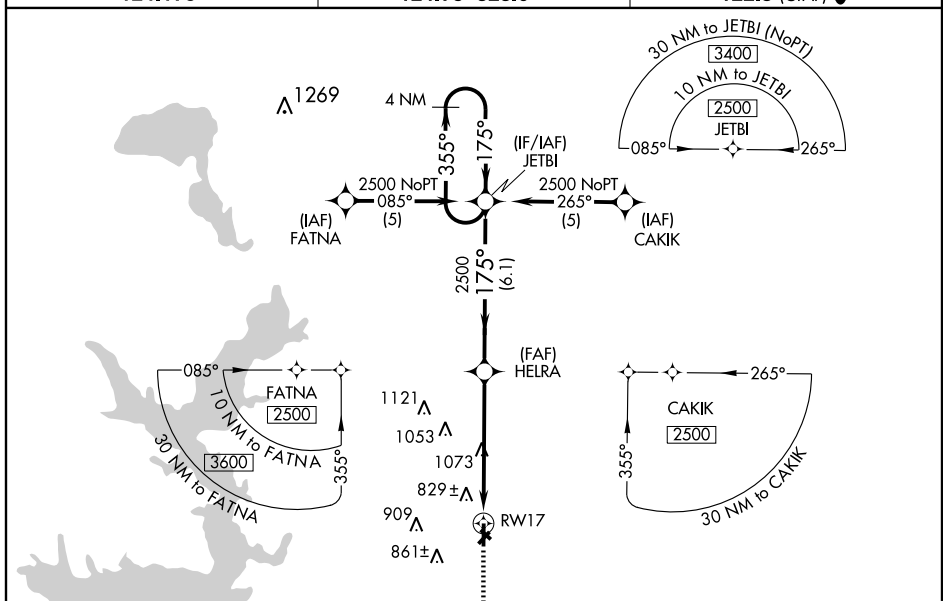
**⚠** Baro-VNAV NA when using Ardmore Muni altimeter setting. For uncompensated Baro-VNAV systems, LNAV/VNAV NA below -16°C (4°F) or above 54°C (130°F).  
**⚠** DME/DME RNP-0.3 NA. When local altimeter setting not received, use Ardmore Muni altimeter setting and increase all DA 96 feet and all MDA 100 feet; increase LPV Cats A, B, C visibility ½ mile, LNAV/VNAV Cats A, B, C and LNAV and Circling Cats B, C visibility ¼ mile. VDP NA with Ardmore Muni altimeter setting.

MISSED APPROACH:  
Climb to 2500 direct ZEGRA and hold.

AWOS-3  
**124.175**

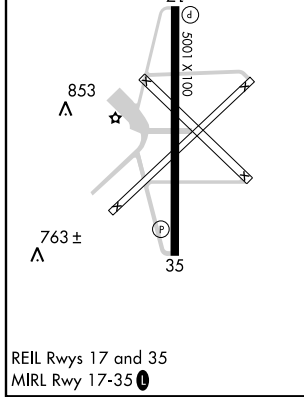
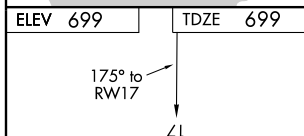
FORT WORTH CENTER  
**124.75 323.0**

UNICOM  
**122.8 (CTAF) 0**

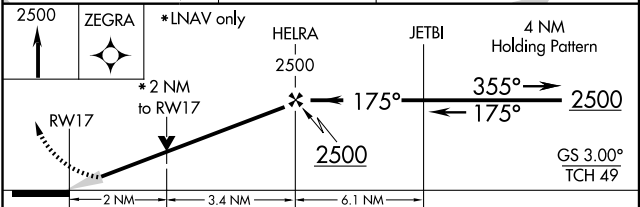
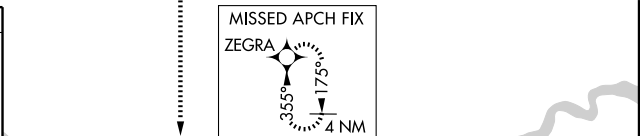


SC-1, 31 MAY 2012 to 28 JUN 2012

SC-1, 31 MAY 2012 to 28 JUN 2012



REIL Rwy 17 and 35  
MIRL Rwy 17-35 0



CATEGORY	A	B	C	D
LPV DA	949-¾	250 (300-¾)		NA
LNAV/VNAV DA	1132-1½	433 (500-1½)		NA
LNAV MDA	1380-1	681 (700-1)	1380-2 681 (700-2)	NA
CIRCLING	1380-1	681 (700-1)	1380-2 681 (700-2)	NA

WAAS CH <b>48918</b> <b>W35A</b>	APP CRS <b>355°</b>	Rwy Idg TDZE Apt Elev	<b>5001</b> <b>690</b> <b>699</b>
--	------------------------	-----------------------------	---

# RNAV (GPS) RWY 35

DURANT RGNL - EAKER FIELD (DUA)

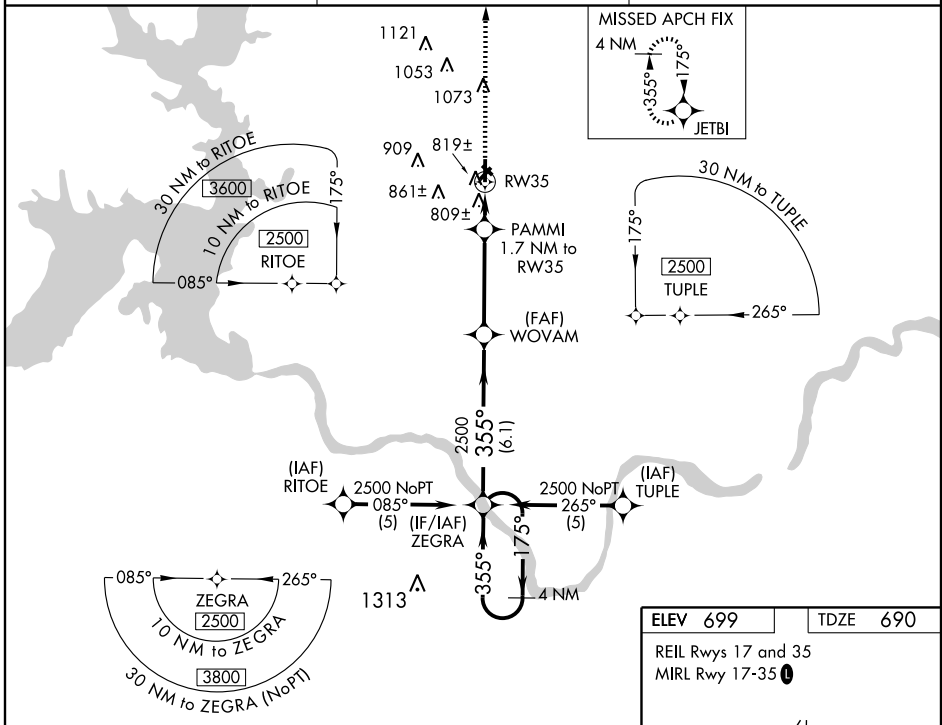
**⚠** Baro-VNAV NA when using Ardmore Muni altimeter setting. For uncompensated Baro-VNAV systems, LNAV/VNAV NA below -16°C (4°F) or above 54°C (130°F). DME/DME RNP-0.3 NA. When local altimeter setting not received, use Ardmore Muni altimeter setting and increase all DA 96 feet, all MDA 100 feet; increase LPV Cats A, B, C visibility ½ mile, increase LNAV/VNAV Cats A, B, C and LNAV and Circling Cat C visibility ¼ mile. VDP NA with Ardmore Muni altimeter setting.

**MISSED APPROACH:**  
Climb to 2500 direct JETBI and hold.

AWOS-3  
**124.175**

FORT WORTH CENTER  
**124.75 323.0**

UNICOM  
**122.8 (CTAF) 0**

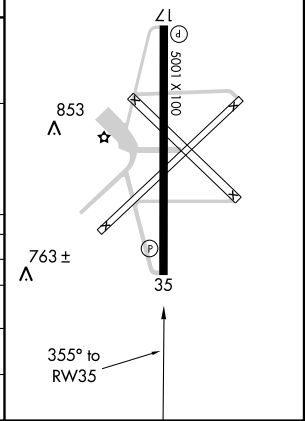
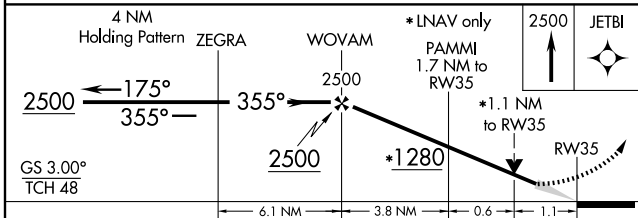


SC-1, 31 MAY 2012 to 28 JUN 2012

SC-1, 31 MAY 2012 to 28 JUN 2012

ELEV 699	TDZE 690
----------	----------

REIL Rwy 17 and 35  
MIRL Rwy 17-35 0



CATEGORY	A	B	C	D
LPV DA	940-¾	250 (300-¾)		NA
LNAV/VNAV DA	1111-1½	421 (500-1½)		NA
LNAV MDA	1100-1 410 (500-1)		1100-1¼ 410 (500-1¼)	NA
CIRCLING	1220-1 521 (600-1)		1220-1½ 521 (600-1½)	NA

DURANT, OKLAHOMA

AL-6172 (FAA)

VOR/DME URH <b>114.3</b> Chan <b>90</b>	APP CRS <b>164°</b>	Rwy Idg TDZE Apt Elev	<b>5001</b> <b>698</b> <b>698</b>
---	------------------------	-----------------------------	---

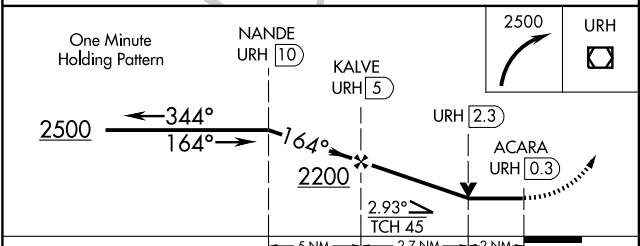
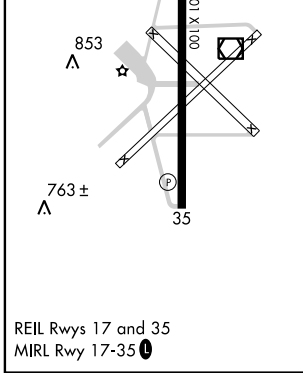
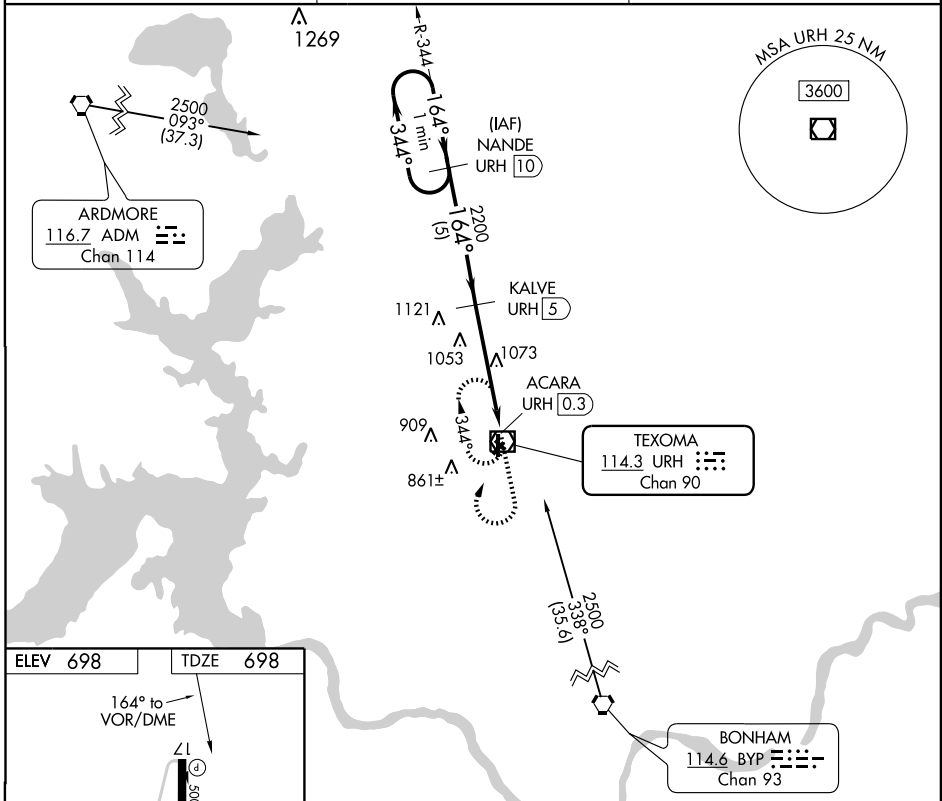
# VOR/DME RWY 17

DURANT RGNL - EAKER FIELD (DUA)

▼ If local altimeter setting not received, use Ardmore Muni altimeter setting and increase all MDAs 100 feet.  
 ▲ NA VDP NA when using Ardmore Muni altimeter setting.

MISSED APPROACH: Climbing right turn to 2500 in URH VOR/DME holding pattern.

AWOS-3 <b>124.175</b>	FORT WORTH CENTER <b>124.75 323.0</b>	UNICOM <b>122.8</b> (CTAF) <b>0</b>
--------------------------	--	--



CATEGORY	A	B	C	D
S-17	1380-1	682 (700-1)	1380-2 682 (700-2)	NA
CIRCLING	1380-1	682 (700-1)	1380-2 682 (700-2)	NA

DURANT, OKLAHOMA  
Orig 12096

33°57'N-96°24'W

# DURANT RGNL - EAKER FIELD (DUA)

## VOR/DME RWY 17

SC-1, 31 MAY 2012 to 28 JUN 2012

SC-1, 31 MAY 2012 to 28 JUN 2012

DURANT, OKLAHOMA

AL-6172 (FAA)

VOR/DME URH <b>114.3</b> Chan <b>90</b>	APP CRS <b>004°</b>	Rwy Idg TDZE Apt Elev	<b>5001</b> <b>695</b> <b>698</b>
---	------------------------	-----------------------------	---

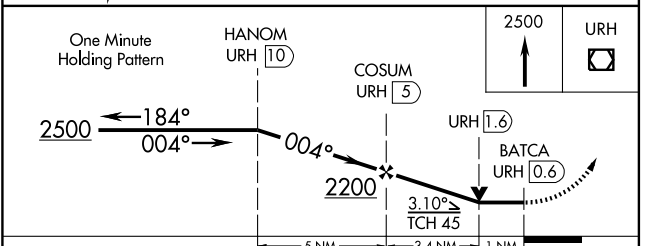
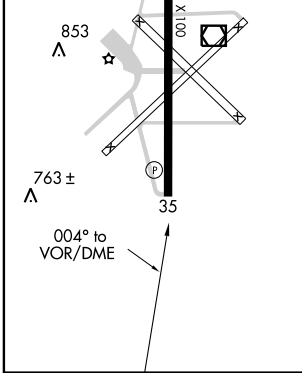
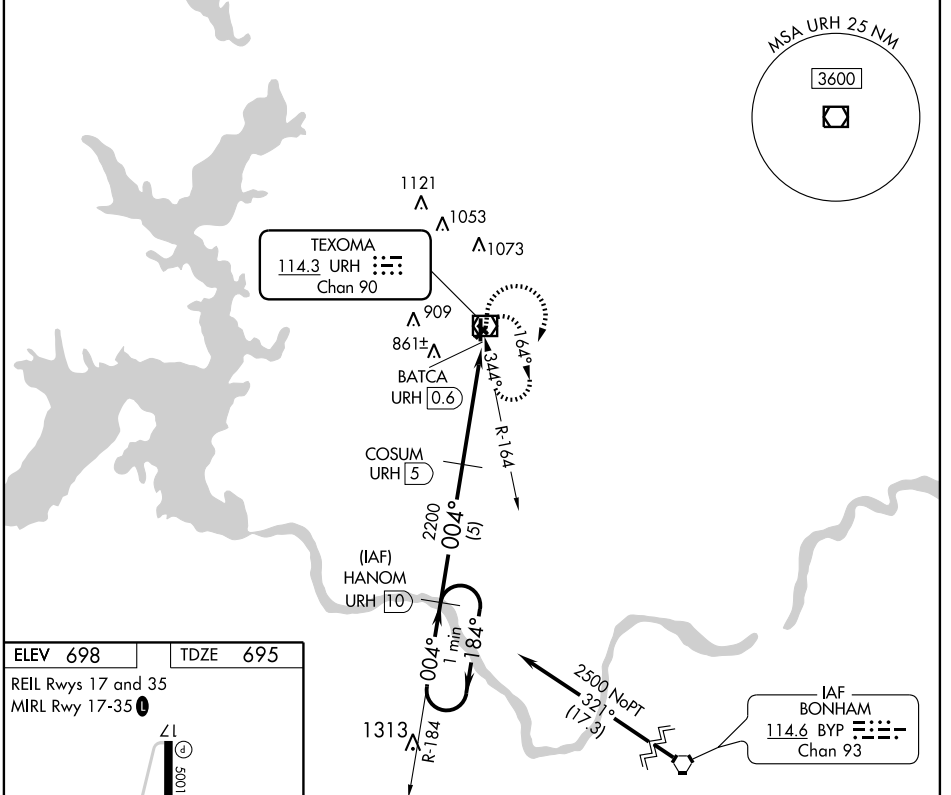
# VOR/DME RWY 35

DURANT RGNL - EAKER FIELD (DUA)

▼ If local altimeter setting not received, use Ardmore Muni altimeter setting and increase all MDAs 100 feet.  
 ▲ NA VDP NA when using Ardmore Muni altimeter setting.

MISSED APPROACH: Climb to 2500 in URH VOR/DME holding pattern.

AWOS-3 <b>124.175</b>	FORT WORTH CENTER <b>124.75 323.0</b>	UNICOM <b>122.8 (CTAF) 0</b>
--------------------------	--	---------------------------------



CATEGORY	A	B	C	D
S-35	1060-1	365 (400-1)		NA
CIRCLING	1160-1	462 (500-1)	1160-1½ 462 (500-1½)	NA

DURANT, OKLAHOMA  
Orig 12096

33° 57' N-96° 24' W

# DURANT RGNL - EAKER FIELD (DUA)

## VOR/DME RWY 35

SC-1, 31 MAY 2012 to 28 JUN 2012

SC-1, 31 MAY 2012 to 28 JUN 2012