

ARRIVAL ROUTE DESCRIPTION

BECKLEY TRANSITION (BKW.GEMNI2): From over BKW VORTAC via BKW R-350 to JAMOX INT, then via DJB R-177 to DJB VOR/DME. Thence. . . .

MONTEBELLO TRANSITION (MOL.GEMNI2): From over MOL VOR/DME via MOL R-288 to BIGAL INT, then via HVQ R-104 to TARCI INT, then via BKW R-350 to JAMOX INT, then via DJB R-177 to DJB VOR/DME. Thence. . . .

SINDE TRANSITION (SINDE.GEMNI2): From over SINDE INT via AML R-281 to GEFFS INT, then via ROD R-121 to VLADY INT, then via BKW R-350 to JAMOX INT, then via DJB R-177 to DJB VOR/DME. Thence. . . .

. . . . From over DJB VOR/DME via R-314 to GEMNI INT/36 DME, then via DXO VOR/DME R-144, to GLOZE INT/8 DME. Expect radar vectors to final approach course.

EC-1, 31 MAY 2012 to 28 JUN 2012

EC-1, 31 MAY 2012 to 28 JUN 2012

MIZAR THREE ARRIVAL


ST-119 (FAA)

DETROIT METROPOLITAN WAYNE COUNTY
DETROIT, MICHIGAN

DETROIT APP CON
124.975 363.2
ATIS 133.675


RAZIM


N41°58.15'
W83°47.55'

DETROIT
113.4 DXO 
Chan 81

VERTICAL NAVIGATION PLANNING INFORMATION

TURBOJETS/TURBOPROPS:
When landing Rwy 3,
expect to cross at or
below 10,000 feet.

JACKSON
109.6 JXN 
Chan 33

LITCHFIELD
111.2 LFD 
Chan 49
N42°03.75'
W84°45.91'
L-28, H-5-10

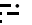
RANDL
N41°45.70'
W84°12.32'

CARLETON
115.7 CRL 
Chan 104

NAKES
N41°40.17'
W84°26.52'

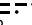
MIZAR
N41°49.55'
W84°02.39'

VERTICAL NAVIGATION
PLANNING INFORMATION
Turbojets: Expect to cross at 12,000 feet.
Turboprops: Expect to cross at 11,000 feet.

FORT WAYNE
117.8 FWA 
Chan 125
N40°58.75'-W85°11.28'
L-27, H-5-10

ROTER
N41°10.94'
W84°25.71'

TORRR
N40°44.50'
W84°24.98'

DAYTON
114.5 DGN 
Chan 92
N40°00.98'-W84°23.81'
L-27, H-10

NOTE: DQN Transition for use by
CVG/DAY/SDF/LEX Terminal Area
Departures at or below FL230 only
and ATC use as assigned.

NOTE: DME REQUIRED
NOTE: Chart not to scale.

DAYTON TRANSITION (DQN.MIZAR3): From over DQN VOR/DME via DQN R-360 and JXN R-184 to NAKES INT, then via CRL VORTAC R-246 to MIZAR DME. Thence. . . .
FORT WAYNE TRANSITION (FWA.MIZAR3): From over FWA VORTAC via FWA R-039 to NAKES INT, then via CRL R-246 to MIZAR DME. Thence. . . .
LITCHFIELD TRANSITION (LFD.MIZAR3): From over LFD VOR/DME via LFD R-131 to RANDL INT, then via CRL R-246 to MIZAR DME. Thence. . . .
. . . . From over MIZAR DME via DXO VOR/DME R-239 to RAZIM DME. Expect radar vectors to final approach course.

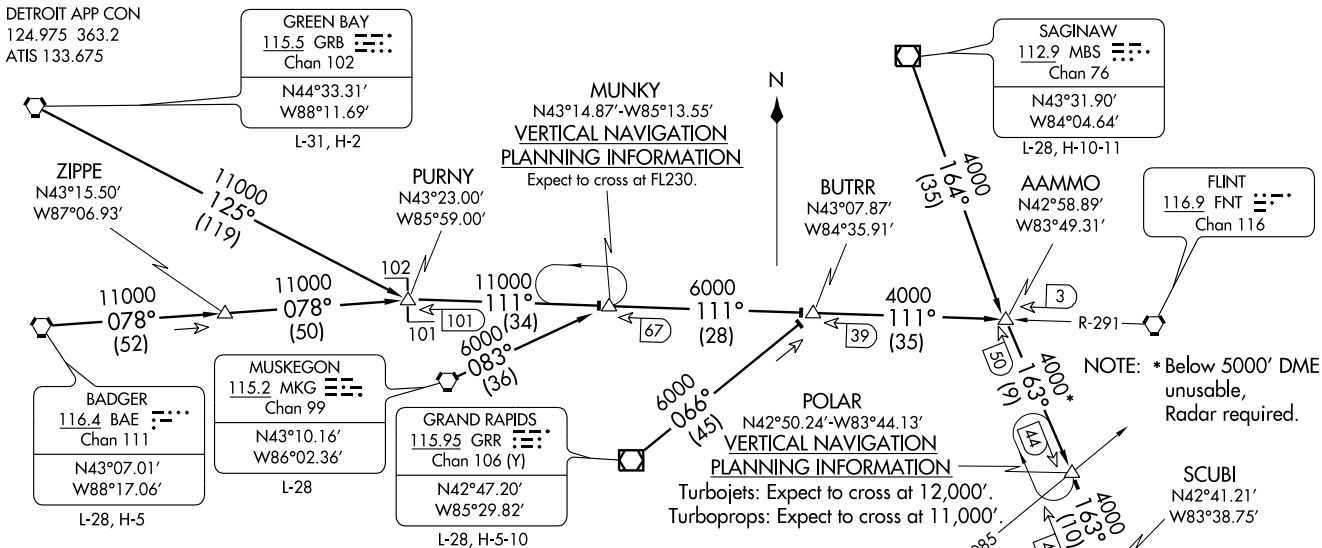
EC-1, 31 MAY 2012 to 28 JUN 2012

EC-1, 31 MAY 2012 to 28 JUN 2012

MIZAR THREE ARRIVAL

POLAR THREE ARRIVAL
(POLAR.POLAR3) 11293

(POLAR.POLAR3) 11293
POLAR THREE ARRIVAL



BADGER TRANSITION (BAE.POLAR3): From over BAE VORTAC via BAE R-078 to PURNY, then via FNT R-291 to AAMMO INT, then via DXO R-343 to POLAR INT. Thence . . .

GRAND RAPIDS TRANSITION (GRR.POLAR3): From over GRR VOR/DME via GRR R-066 to BUTRR INT, then via FNT R-291 to AAMMO INT, then via DXO R-343 to POLAR INT. Thence . . .

GREEN BAY TRANSITION (GRB.POLAR3): From over GRB VORTAC via GRB R-125 to PURNY, then via FNT R-291 to AAMMO INT, then via DXO R-343 to POLAR INT. Thence . . .

MUSKEGON TRANSITION (MKG.POLAR3): From over MKG VORTAC via MKG R-083 to MUNKY, then via FNT R-291 to AAMMO INT, then via DXO R-343 to POLAR INT. Thence . . .

SAGINAW TRANSITION (MBS.POLAR3): From over MBS VOR/DME via MBS R-164 to AAMMO INT, then via DXO R-343 to POLAR INT. Thence . . .

. . . From over POLAR INT via DXO R-343 to SCUBI. Thence . . .

Landing Runway 3L/R or 4L/R: Via DXO R-343 to TRAML. Expect radar vectors to final approach course.

Landing Runway 21L/R or 22L/R: Expect radar vectors to final approach course.

NOTE: DME REQUIRED.
NOTE: Chart not to scale.

ST-119 (FAA)

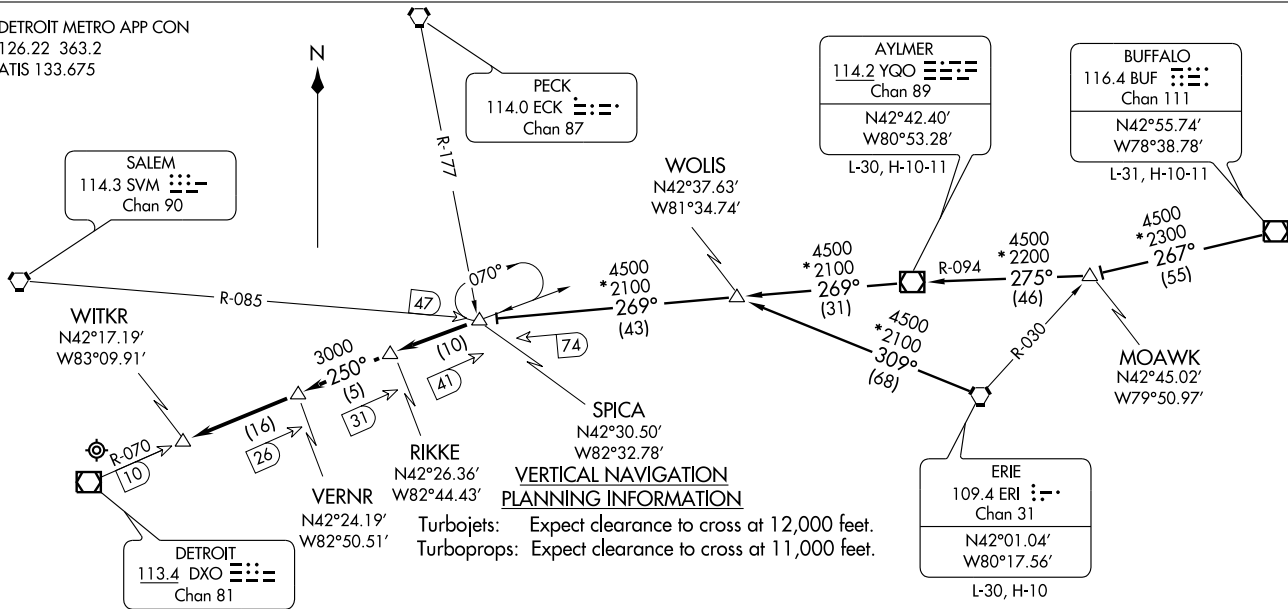
DETROIT METROPOLITAN WAYNE COUNTY
DETROIT, MICHIGAN

DETROIT, MICHIGAN
DETROIT METROPOLITAN WAYNE COUNTY

SPICA TWO ARRIVAL
(SPICA,SPICA2) 09071

DETROIT METROPOLITAN WAYNE COUNTY
DETROIT, MICHIGAN

DETROIT METRO APP CON
126.22 363.2
ATIS 133.675



NOTE: DME Required.

NOTE: Chart not to scale.

AYLMER TRANSITION (YQO.SPICA2): From over YQO VOR/DME via YQO R-269 to SPICA 74 DME FIX. Thence

BUFFALO TRANSITION (BUF.SPICA2): From over BUF VOR/DME via BUF R-267 to MOAWK INT, then via YQO R-094 to YQO VOR/DME, then via YQO R-269 to SPICA 74 DME FIX. Thence

ERIE TRANSITION (ERI.SPICA2): From over ERI VORTAC via ERI R-309 to WOLIS INT, then via YQO R-269 to SPICA 74 DME FIX. Thence

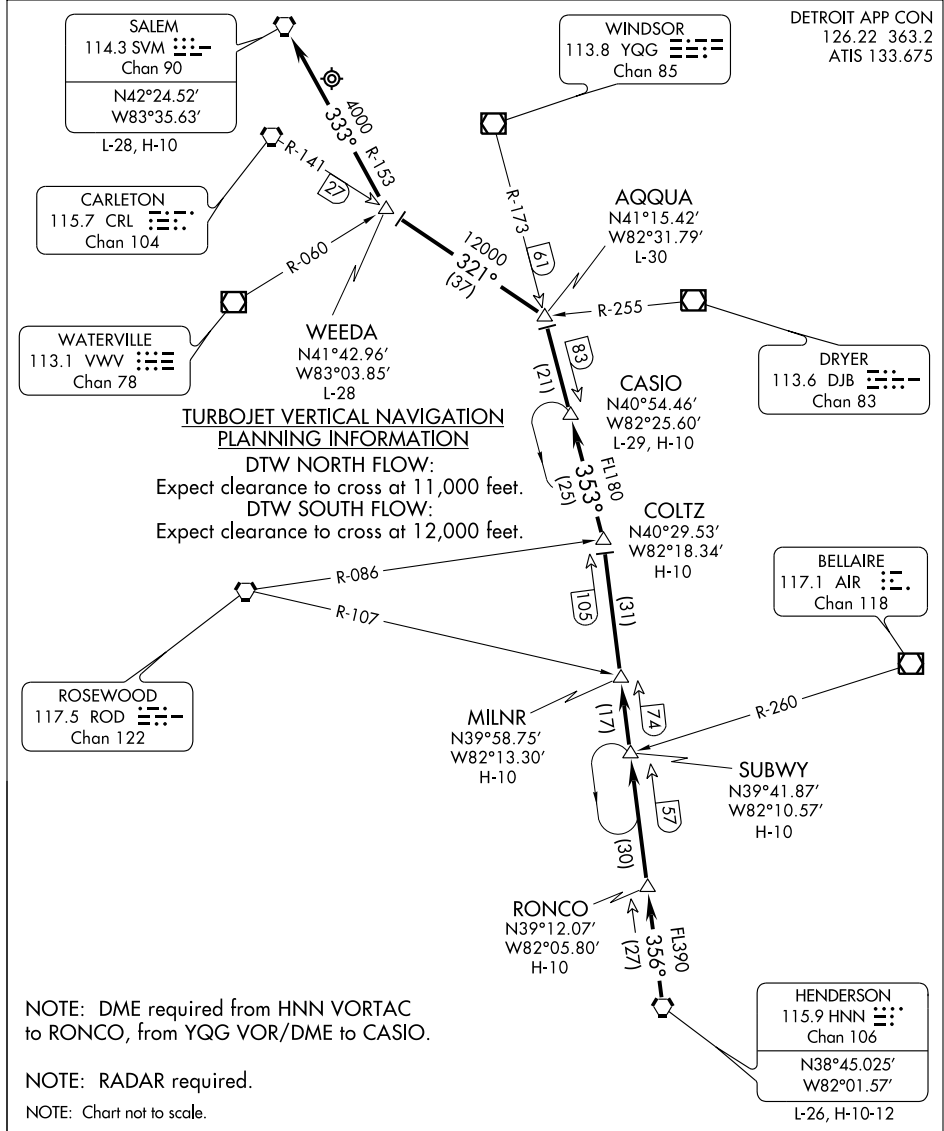
. . . . From over SPICA 74 DME FIX:
 Landing Runway 21L/R or 22L/R via DXO R-070 to VERNR 26 DME FIX. Thence
 Landing Runway 3L/R or 4L/R via DXO R-070 to WITKR 10 DME FIX. Thence
 Expect radar vectors to final approach course.

(SPICA,SPICA2) 09071
SPICA TWO ARRIVAL

ST-119 (FAA)

DETROIT METROPOLITAN WAYNE COUNTY
DETROIT, MICHIGAN

DETROIT APP CON
126.22 363.2
ATIS 133.675



ARRIVAL ROUTE DESCRIPTION

From over HNN VORTAC via R-356 to COLTZ INT (MEA FL390), then via YQG R-173 to AQQUA INT (MEA FL180), then via CRL R-141 TO WEEDA INT (MEA 12000) then via SVM R-153 TO SVM VORTAC (MEA 4000). Expect radar vectors to final approach course.

EC-1, 31 MAY 2012 to 28 JUN 2012

EC-1, 31 MAY 2012 to 28 JUN 2012