

(SPRTN.SPRTN3) 17229

AL-118 (FAA)

SPRTN THREE ARRIVAL

DETROIT, MICHIGAN

DETROIT APP CON

127.5 239.275

WILLOW RUN ATIS 127.425

PONTIAC ATIS 125.025

COLEMAN A. YOUNG ATIS 124.875

WINDSOR ATIS 134.5

SELFRIDGE ATIS 125.325 270.1

SPRTN

N42°42.52'-W84°00.23'

VERTICAL NAVIGATION

PLANNING INFORMATION

TURBOJET/TURBOPROPS:

Expect clearance to cross at 9000'.

4000
+2900
096°
(31)

LIVINGSTON COUNTY
SPENCER J HARDY

4000

143°

(16)

4000

(35)

4000

(31)

4000

(31)

4000

(31)

4000

(31)

4000

(31)

4000

(31)

4000

(31)

4000

(31)

4000

(31)

4000

(31)

4000

(31)

4000

(31)

4000

(31)

4000

(31)

4000

(31)

4000

(31)

4000

(31)

4000

(31)

4000

(31)

4000

(31)

4000

(31)

4000

(31)

FLINT
116.9 FNT
Chan 116

PONTIAC
111.0 PSI
Chan 47

LANSING
110.8 LAN
Chan 45
N42°43.04'
W84°41.85'
L-28, H-5-10

DETROIT
113.4 DXO
Chan 81

PARKY
N42°38.16'
W83°54.57'

OAKLAND COUNTY
INTL

OAKLAND/
TROY

CANTON-
PLYMOUTH-
METTETAL

WILLOW
RUN

ANN ARBOR MUNI

ROMEO STATE

SELFRIDGE
ANG BASE

COLEMAN A
YOUNG MUNI

WINDSOR

GROSSE ILE
MUNI

AL MEYERS

CLUSTER

NOTE: This Star for use at or above 9,000'.

NOTE: Chart not to scale.

LANSING TRANSITION (LAN.SPRTN3): From over LAN VORTAC via LAN R-096 to SPRTN INT. Thence Aircraft landing: DET, PTK, VLL, D98, MTC, ARB, YIP, ONZ, 1D2, TTF, Y47, OZW, 3TE, YQG: From over SPRTN INT via DXO R-323 to PARKY INT. Thence Expect radar vectors to final approach course.

SPRTN THREE ARRIVAL

(SPRTN.SPRTN3) 13OCT94

DETROIT, MICHIGAN

EC-1, 07 DEC 2017 to 04 JAN 2018

EC-1, 07 DEC 2017 to 04 JAN 2018

GOHMA THREE ARRIVAL
(GOHMA,GOHMA3) 13NOV14

(GOHMA,GOHMA3) 17117
GOHMA THREE ARRIVAL

DETROIT APP CON
118.95 363.2
PONTIAC ATIS
125.025
COLEMAN A. YOUNG ATIS
124.875
WINDSOR ATIS
134.5
WILLOW RUN ATIS
127.425
ANN ARBOR ATIS
134.55

PONTIAC
111.0 PSI
Chan 47

ANN ARBOR
MUNI

CANTON-
PLYMOUTH-
METTETAL

WILLOW
RUN

COLEMAN A
YOUNG MUNI

WINDSOR

WINDSOR
113.8 YQG
Chan 85

GOHMA
N42°36.90'
W82°36.52'

RCADE
N42°40.84'
W82°34.13'

PICES
N42°46.75'
W82°11.15'

AXXIS
N42°49.84'
W81°59.00'

LONDON
117.2 YXU
Chan 119
N43°02.27'
W81°08.94'
L-30-31, H-10-11

MAA FL240
10000
*3000
260°
(39)

MAA FL240
4000
*2400
260°
(48) (9)

4000
*2400
260°
(66) (118)

4000
*1900
210°
(4)

4000
*2100
210°
(24)

R-100

R-030

030°

210°

210°



AXXIS TRANSITION (AXXIS.GOHMA3): From over AXXIS on YXU R-260 to RCADE, then on YQG R-030 to GOHMA. Thence....

LONDON TRANSITION (YXU.GOHMA3): From over YXU VOR/DME on YXU R-260 to RCADE, then on YQG R-030 to GOHMA. Thence....

....From GOHMA on YQG R-030 to YQG VOR/DME. Expect radar vectors to final approach course from Detroit approach control.

NOTE: DME required.
NOTE: RADAR required.
NOTE: Chart not to scale.

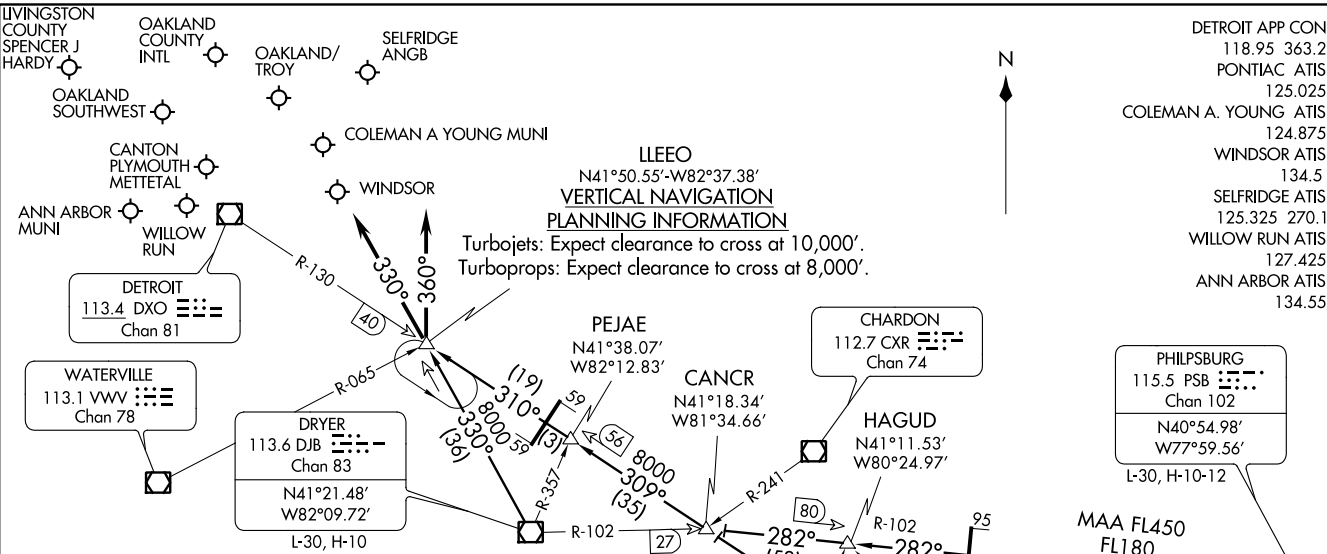
DETROIT, MICHIGAN

DETROIT, MICHIGAN

AL-467 (FAA)

LLEEO TWO ARRIVAL
(LLEEO.LLEEO2) 20DEC07

(LLEEO.LLEEO2) 17117
LLEEO TWO ARRIVAL



ARRIVAL ROUTE DESCRIPTION

AKRON TRANSITION (ACO.LLEEO2): From over ACO VOR/DME via ACO R-309 and DXO R-130 to LLEEO INT. Thence

DRYER TRANSITION (DJB.LLEEO2): From over DJB VOR/DME via DJB R-330 to LLEEO INT. Thence

JOHNSTOWN TRANSITION (JST.LLEEO2): From over JST VORTAC via JST R-313 to HAGUD INT, then via DJB R-102 to CANCR INT, then via ACO R-309 and DXO R-130 to LLEEO INT. Thence

PHILPSBURG TRANSITION (PSB.LLEEO2): From over PSB VORTAC via PSB R-289 and DJB R-102 to CANCR INT, then via ACO R-309 and DXO R-130 to LLEEO INT. Thence Aircraft Landing Willow Run, Ann Arbor Muni, Canton-Plymouth-Mettetal, Oakland Southwest, Livingston County: From over LLEEO INT via 330° heading. Expect radar vectors to final approach course. . . . Aircraft Landing Coleman A. Young Muni, Oakland County Intl, Windsor, Oakland/Troy, Selfridge ANGB: From over LLEEO INT via 360° heading. Expect radar vectors to final approach course.

- DETROIT APP CON 118.95 363.2
- PONTIAC ATIS 125.025
- COLEMAN A. YOUNG ATIS 124.875
- WINDSOR ATIS 134.5
- SELFTRIDGE ATIS 125.325 270.1
- WILLOW RUN ATIS 127.425
- ANN ARBOR ATIS 134.55

PHILPSBURG
115.5 PSB
Chan 102
N40°54.98'
W77°59.56'
L-30, H-10-12

JOHNSTOWN
113.0 JST
Chan 77
N40°19.00'
W78°50.05'
L-29, H-10-12

NOTE: RADAR REQUIRED
NOTE: Chart not to scale.

AL-467 (FAA)

DETROIT, MICHIGAN

DETROIT, MICHIGAN