

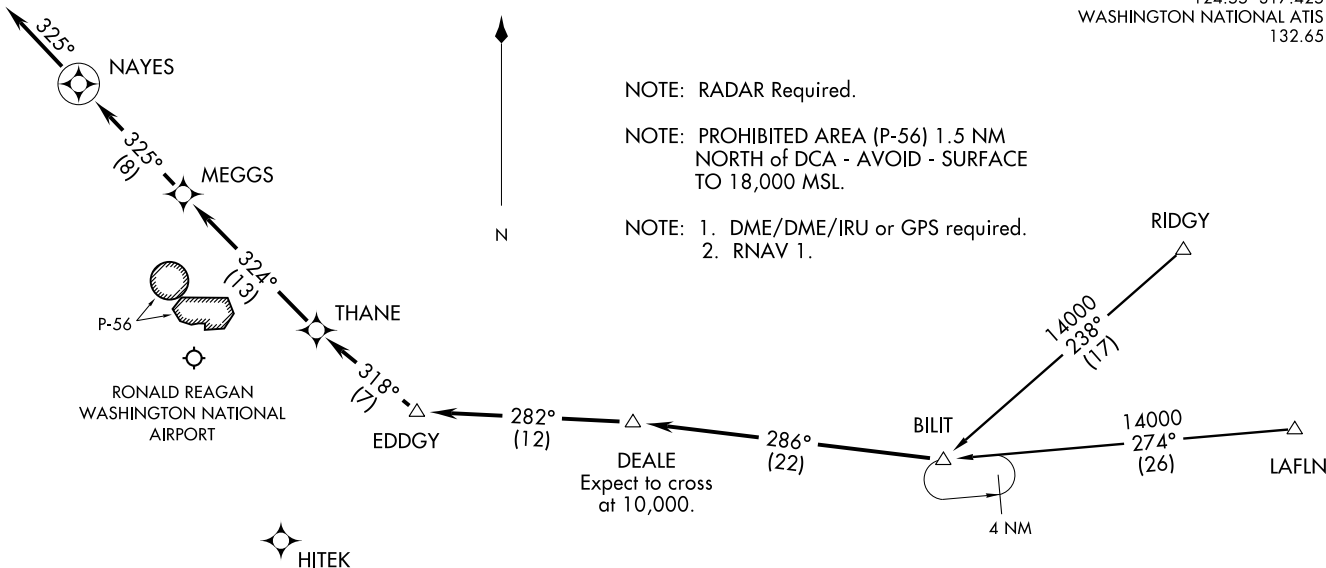
POTOMAC APP CON  
124.55 317.425  
WASHINGTON NATIONAL ATIS  
132.65

(BLIT.BILIT1) 09071  
**BILIT ONE ARRIVAL (RNAV)**

ST-443 (FAA)  
WASHINGTON/ RONALD REAGAN WASHINGTON NATIONAL  
WASHINGTON, DC

**BILIT ONE ARRIVAL (RNAV)**  
(BLIT.BILIT1) 09071

WASHINGTON/ RONALD REAGAN WASHINGTON NATIONAL  
WASHINGTON, DC



- NOTE: RADAR Required.
- NOTE: PROHIBITED AREA (P-56) 1.5 NM NORTH of DCA - AVOID - SURFACE TO 18,000 MSL.
- NOTE: 1. DME/DME/IRU or GPS required.  
2. RNAV 1.

DEALE  
Expect to cross at 10,000.

**ARRIVAL ROUTE DESCRIPTION**

LAFN TRANSITION (LAFN.BILIT1):  
RIDGY TRANSITION (RIDGY.BILIT1):

. . . From BILIT WP via 286° track to DEALE WP, thence as depicted to NAYES WP, depart NAYES WP heading 325° for vectors to final approach course.

LANDING RWY 1: After EDDGY WP, expect radar vectors to final approach course.

LANDING RWY 19: Depart NAYES WP heading 325° for vectors to final approach course.

NOTE: Chart not to scale

(CLIPR.CLIPR1) 09071

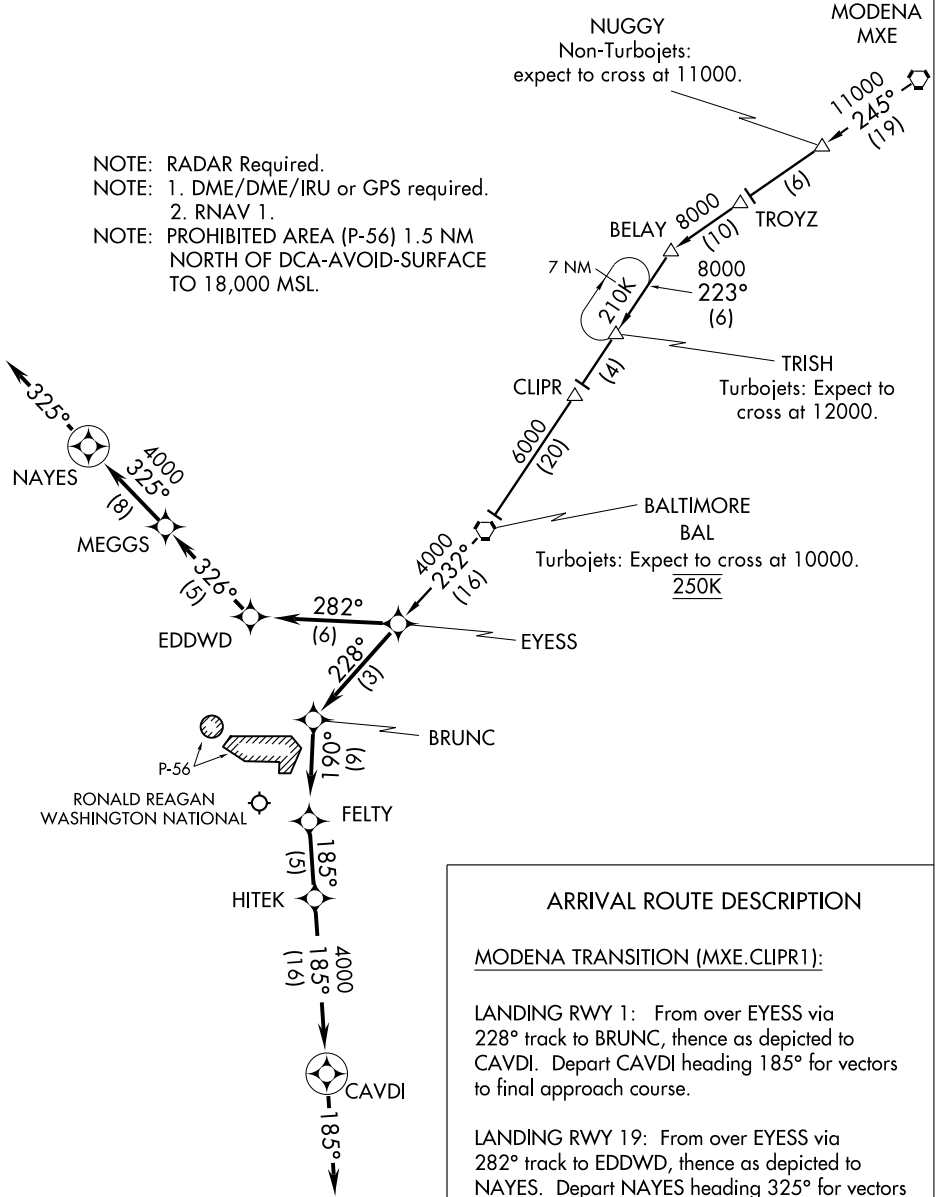
# CLIPR ONE ARRIVAL (RNAV)

ST-443 (FAA)

WASHINGTON/ RONALD REAGAN WASHINGTON NATIONAL  
WASHINGTON, DC

POTOMAC APP CON  
128.7 307.9  
WASHINGTON NATIONAL ATIS  
132.65

- NOTE: RADAR Required.
- NOTE: 1. DME/DME/IRU or GPS required.
- NOTE: 2. RNAV 1.
- NOTE: PROHIBITED AREA (P-56) 1.5 NM NORTH OF DCA-AVOID-SURFACE TO 18,000 MSL.



NE-3, 31 MAY 2012 to 28 JUN 2012

NE-3, 31 MAY 2012 to 28 JUN 2012

## ARRIVAL ROUTE DESCRIPTION

### MODENA TRANSITION (MXE.CLIPR1):

LANDING RWY 1: From over EYESS via 228° track to BRUNC, thence as depicted to CAVDI. Depart CAVDI heading 185° for vectors to final approach course.

LANDING RWY 19: From over EYESS via 282° track to EDDWD, thence as depicted to NAYES. Depart NAYES heading 325° for vectors to final approach course..

NOTE: Chart not to scale.

# CLIPR ONE ARRIVAL (RNAV)

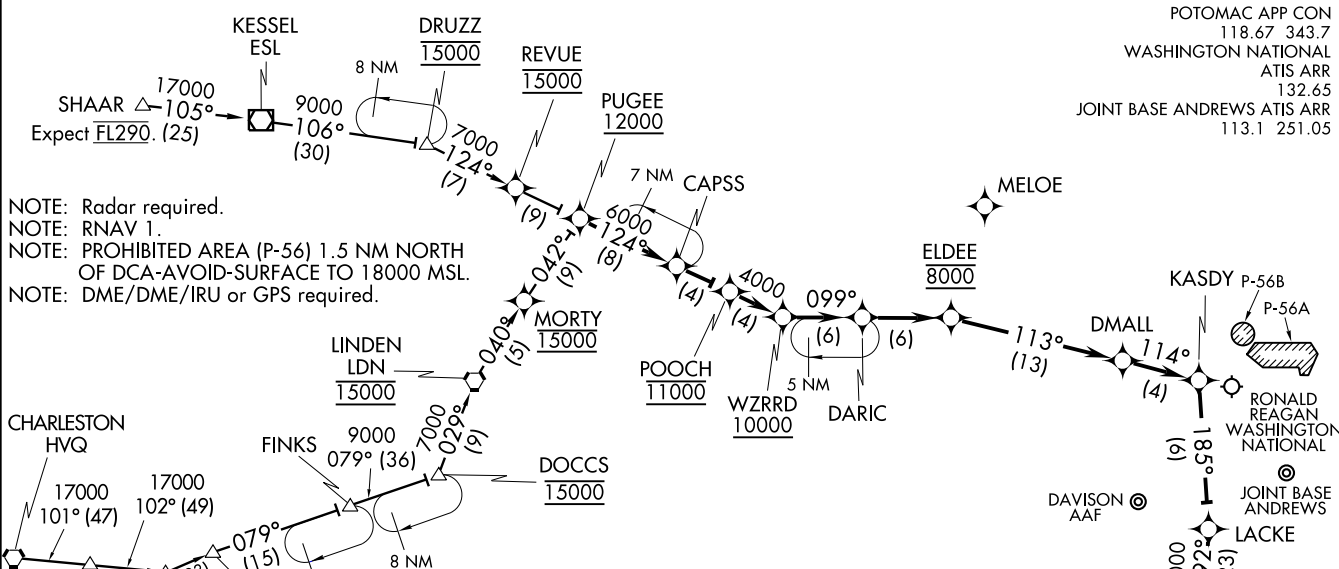
(CLIPR.CLIPR1) 09071

WASHINGTON, DC  
WASHINGTON/ RONALD REAGAN WASHINGTON NATIONAL

ELDEE FIVE ARRIVAL (RNAV)  
(ELDEE:ELDEE5) 12152

(ELDEE:ELDEE5) 12152  
ELDEE FIVE ARRIVAL (RNAV)

POTOMAC APP CON  
118.67 343.7  
WASHINGTON NATIONAL  
ATIS ARR  
132.65  
JOINT BASE ANDREWS ATIS ARR  
113.1 251.05



NOTE: Radar required.  
 NOTE: RNAV 1.  
 NOTE: PROHIBITED AREA (P-56) 1.5 NM NORTH OF DCA-AVOID-SURFACE TO 18000 MSL.  
 NOTE: DME/DME/IRU or GPS required.

**ARRIVAL ROUTE DESCRIPTION**

**BECKLEY TRANSITION (BKW.ELDEE5):**  
**CHARLESTON TRANSITION (HVQ.ELDEE5):**  
**SHAAR TRANSITION (SHAAR.ELDEE5):**

From over PUGEE on track 124° to CAPSS, then on track 124° to POOCH, then on track 124° to WZRRD, then on track 099° to DARIC, then on track 099° to ELDEE, then on track 113° to DMALL, then on track 114° to KASDY, then on track 185° to LACKE, then on track 192° to SABBI. Depart SABBI heading 192° for vectors to final approach course.

NOTE: Chart not to scale.

WASHINGTON, DC

WASHINGTON, DC

ST-443 (FAA)

# IRONS FOUR ARRIVAL

WASHINGTON, DC

POTOMAC APP CON  
 119.85 322.3 (DCA ARRIVALS ONLY)  
 128.35 270.275 (ADW ARRIVALS ONLY)  
 JOINT BASE ANDREWS ATIS  
 113.1 251.05  
 WASHINGTON NATIONAL ATIS  
 132.65

WASHINGTON  
 111.0 DCA  
 Chan 47

RONALD REAGAN  
 WASHINGTON NATIONAL

COLLEGE PARK

JOINT BASE ANDREWS

WASHINGTON EXECUTIVE/  
 HYDE FIELD

NOTTINGHAM  
 113.7 OTT  
 Chan 84

NOTE: Aircraft use DCA ATIS to determine the direction of landing prior to IRONS INT. (DCA only).

NOTE: PROHIBITED AREA (P-56) 1.5 NM NORTH OF DCA-AVOID-SURFACE TO 18000 MSL.

OJAAY  
 N38°17.56'  
 W77°09.38'

**TURBOJET VERTICAL NAVIGATION PLANNING INFORMATION**  
 (DCA only)  
 Expect 10000  
 (and expect 250K in a North operation).

JIMBE  
 N38°07.68'  
 W77°11.44'

EPICS  
 N37°47.15'  
 W77°15.82'

FLAT ROCK  
 113.3 FAK  
 Chan 80

HARCUM  
 108.8 HCM  
 Chan 25

RICHMOND  
 114.1 RIC  
 Chan 88  
 N37°30.14' - W77°19.22'

NOTE: Chart not to scale.

**RICHMOND TRANSITION (RIC.IRONS4):** From over RIC VORTAC via RIC R-018 and DCA R-198 to IRONS INT. Thence . . .

. . . From over IRONS INT:

Ronald Reagan Washington National Airport (DCA only):

LANDING SOUTH: Then via DCA R-198 to SAMMO INT, heading for vectors to the final approach course.

LANDING NORTH: Expect vectors to final approach course.

All other airports: Expect vectors.

NE-3, 31 MAY 2012 to 28 JUN 2012

NE-3, 31 MAY 2012 to 28 JUN 2012

# IRONS FOUR ARRIVAL

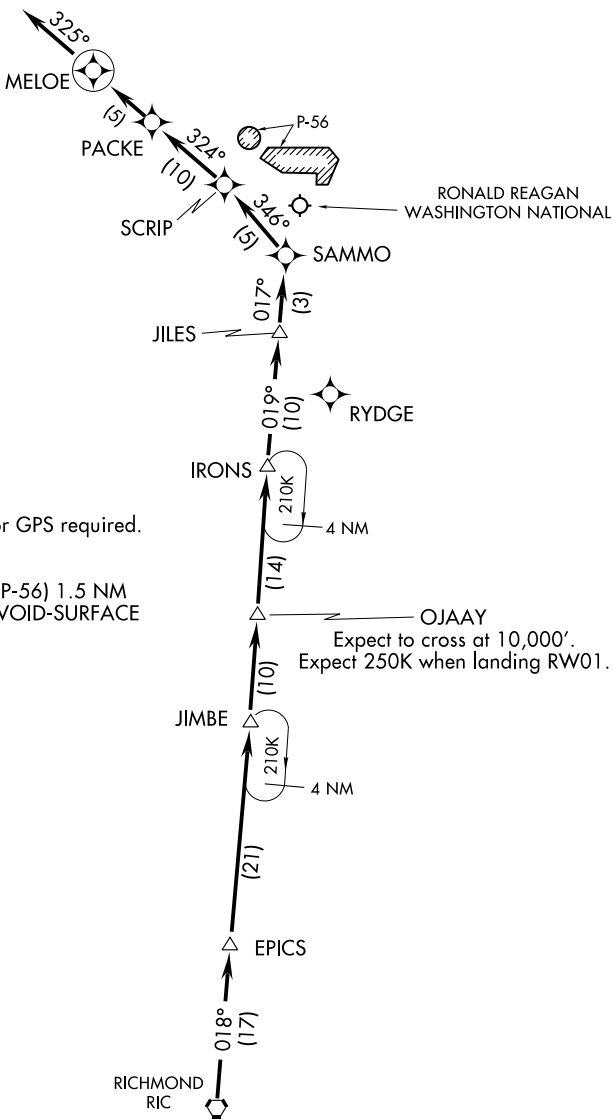
WASHINGTON, DC

(OJAAY.OJAAY1) 09183

# OJAAY ONE ARRIVAL (RNAV)

ST-443 (FAA)  
WASHINGTON/ RONALD REAGAN WASHINGTON NATIONAL  
WASHINGTON, DC

POTOMAC APP CON  
119.85 322.3  
WASHINGTON NATIONAL ATIS  
132.65



NOTE: RADAR Required.

NOTE: 1. DME/DME/IRU or GPS required.  
2. RNAV 1.

NOTE: PROHIBITED AREA (P-56) 1.5 NM  
NORTH OF DCA-AVOID-SURFACE  
TO 18,000 MSL.

OJAAY  
Expect to cross at 10,000'.  
Expect 250K when landing RW01.

NOTE: Chart not to scale.

## ARRIVAL ROUTE DESCRIPTION

From RIC VORTAC via 018° track to EPICS WP, thence as depicted to MELOE WP, depart MELOE WP heading 325° for vectors to final approach course.

LANDING RWY 1: After IRONS, expect radar vectors to final approach course.

LANDING RWY 19: Depart MELOE WP heading 325° for vectors to final approach

(OJAAY.OJAAY1) 09183

WASHINGTON, DC  
WASHINGTON/ RONALD REAGAN WASHINGTON NATIONAL

NE-3, 31 MAY 2012 to 28 JUN 2012

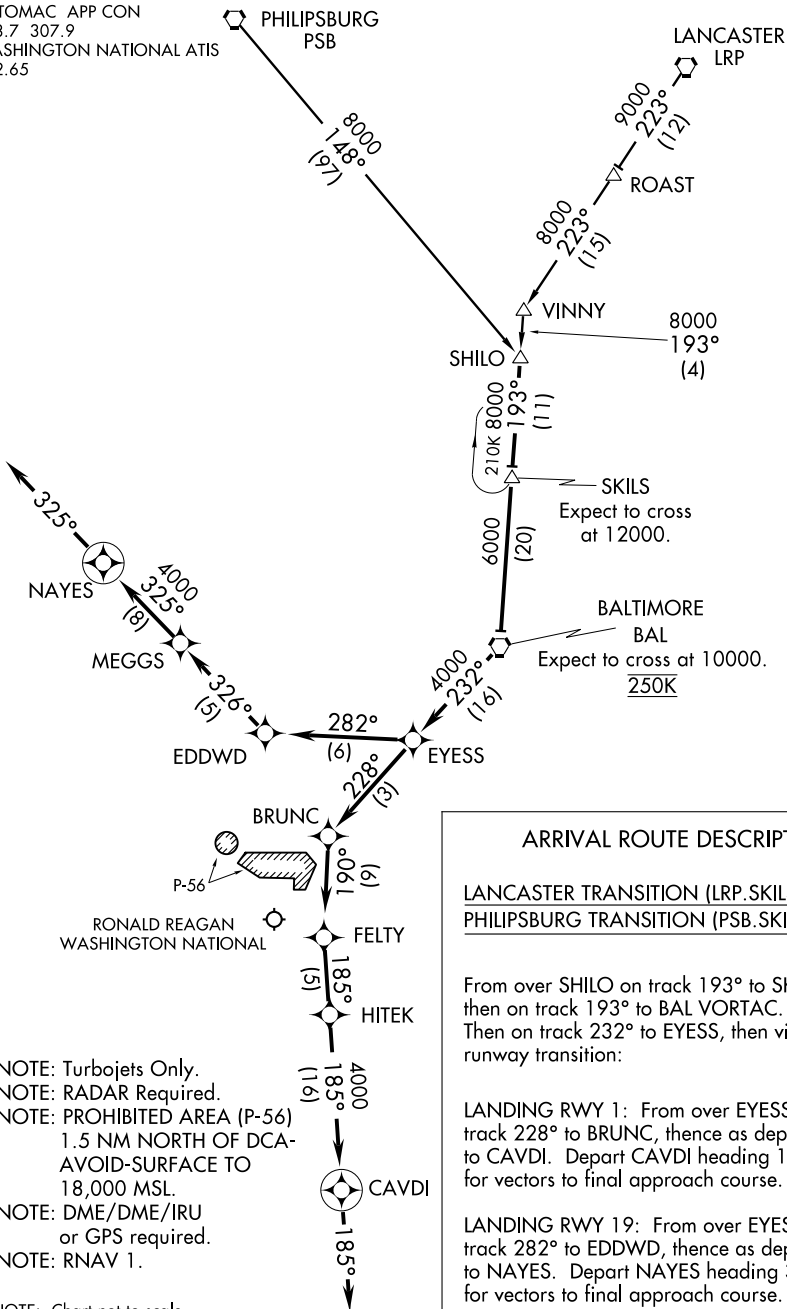
NE-3, 31 MAY 2012 to 28 JUN 2012

# SKILS TWO ARRIVAL (RNAV)

WASHINGTON/  
RONALD REAGAN WASHINGTON NATIONAL (DCA)

WASHINGTON, DC  
RONALD REAGAN WASHINGTON NATIONAL (DCA)

POTOMAC APP CON  
128.7 307.9  
WASHINGTON NATIONAL ATIS  
132.65



NE-3, 31 MAY 2012 to 28 JUN 2012

NE-3, 31 MAY 2012 to 28 JUN 2012

## ARRIVAL ROUTE DESCRIPTION

LANCASTER TRANSITION (LRP.SKILS2):  
PHILIPSBURG TRANSITION (PSB.SKILS2):

From over SHILO on track 193° to SKILS, then on track 193° to BAL VORTAC. Then on track 232° to EYESS, then via runway transition:

**LANDING RWY 1:** From over EYESS on track 228° to BRUNC, thence as depicted to CAVDI. Depart CAVDI heading 185° for vectors to final approach course.

**LANDING RWY 19:** From over EYESS on track 282° to EDDWD, thence as depicted to NAYES. Depart NAYES heading 325° for vectors to final approach course.

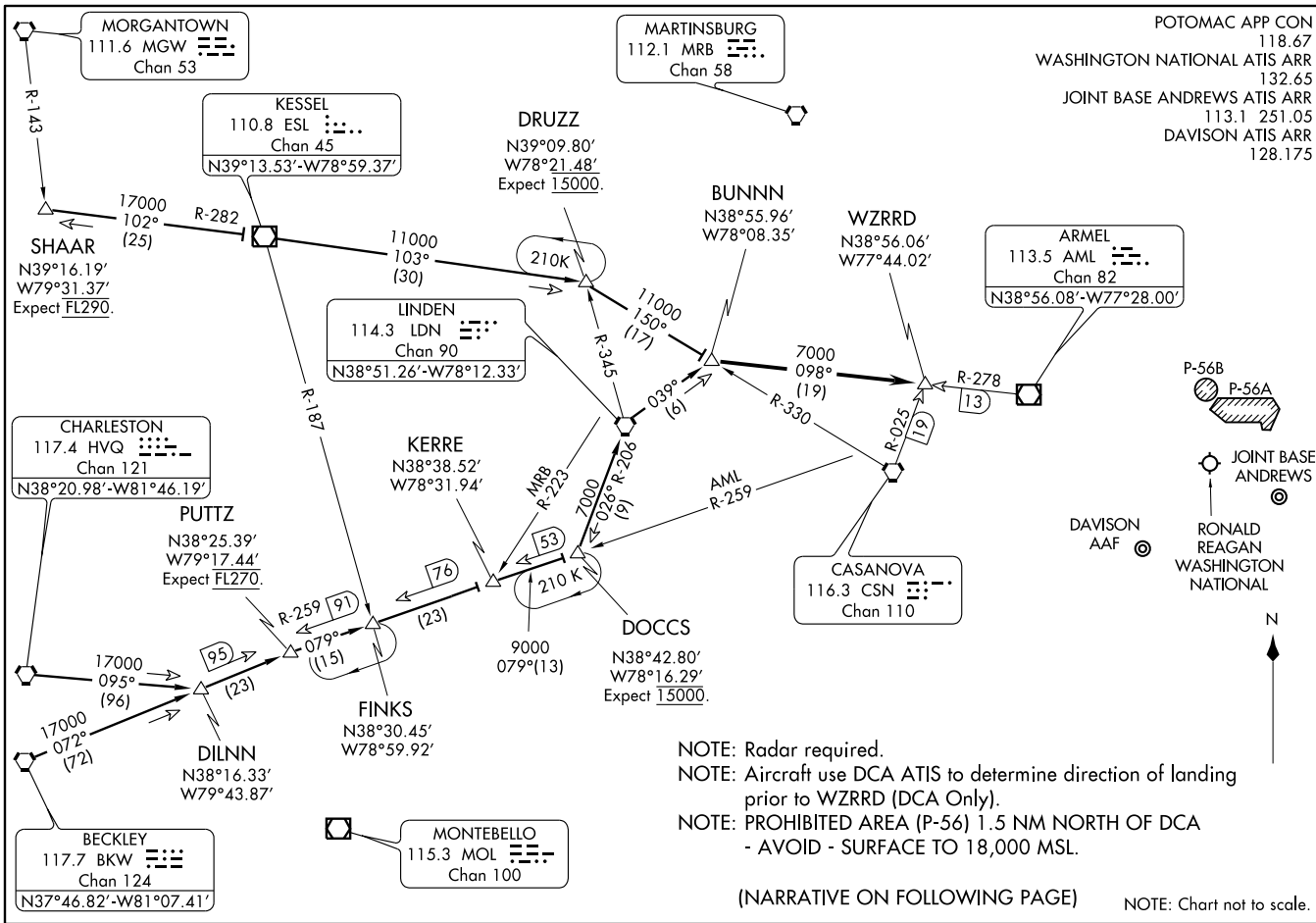
- NOTE: Turbojets Only.
- NOTE: RADAR Required.
- NOTE: PROHIBITED AREA (P-56)  
1.5 NM NORTH OF DCA-  
AVOID-SURFACE TO  
18,000 MSL.
- NOTE: DME/DME/IRU  
or GPS required.
- NOTE: RNAV 1.

NOTE: Chart not to scale.

WZRRD TWO ARRIVAL  
(WZRRD, WZRRD2) 1215Z

WZRRD TWO ARRIVAL

WASHINGTON, DC



WZRRD TWO ARRIVAL  
(WZRRD, WZRRD2) 1215Z

ST-443 (FAA)

WASHINGTON, DC

ARRIVAL ROUTE DESCRIPTION

BECKLEY TRANSITION (BKW.WZRRD2): From over BKW VORTAC via BKW R-072 to PUTTZ INT, then via AML R-259 to DOCCS INT, then via LDN R-206 to LDN VORTAC, then via LDN R-039 to BUNNN INT, thence . . . .

CHARLESTON TRANSITION (HVQ.WZRRD2): From over HVQ VORTAC via HVQ R-095 to DILNN INT, then via BKW R-072 to PUTTZ INT, then via AML R-259 to DOCCS INT, then via LDN R-206 to LDN VORTAC, then via LDN R-039 to BUNNN INT, thence . . . .

SHAAR TRANSITION (SHAAR.WZRRD2): From over SHAAR INT via ESL R-282 to ESL VOR/DME, then via R-103 to DRUZZ INT, then via CSN R-330 to BUNNN, thence . . . .

. . . . from over BUNNN INT via AML R-278 to WZRRD INT. Expect vectors to final approach course after WZRRD INT.

NE-3, 31 MAY 2012 to 28 JUN 2012

NE-3, 31 MAY 2012 to 28 JUN 2012