

LAZIR TWO DEPARTURE (RNAV) WASHINGTON/ RONALD REAGAN WASHINGTON NATIONAL (DCA) (LAZIR2.LAZIR) 12096

ATIS 132.65
CLNC DEL 128.25
GND CON 121.7 257.6
WASHINGTON TOWER
119.1 257.6

DEPARTURE FREQUENCY
IF YOUR ROUTE CONTAINS...
AML VOR/DME, BUFFR, CSN
VORTAC, FLUKY, GINYA,
GVE VORTAC, HAFNR, LDN
VORTAC, MOL VOR/DME,
PAUKI, JERES or RAMAY
use 118.95 / 257.2

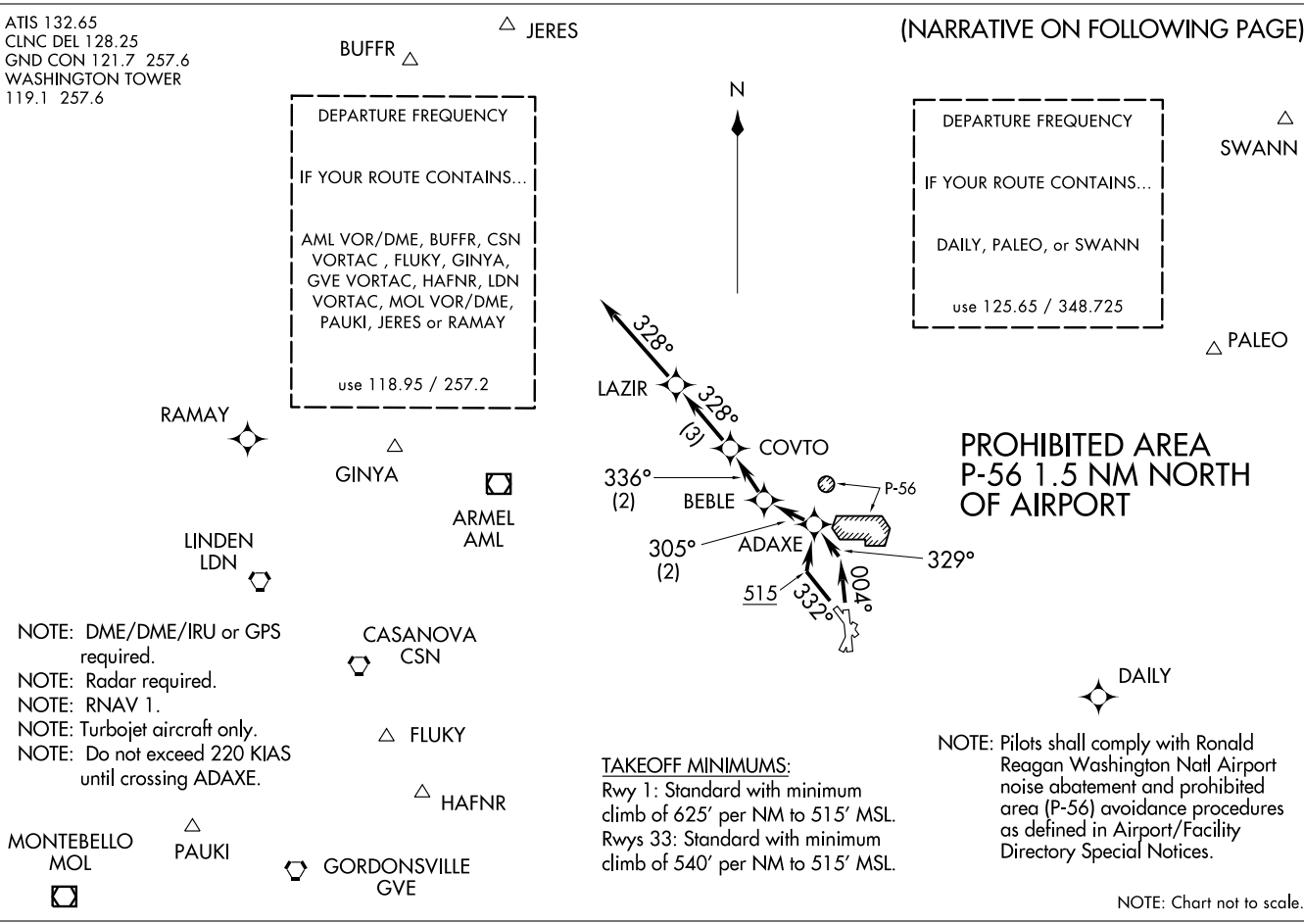
(NARRATIVE ON FOLLOWING PAGE)
DEPARTURE FREQUENCY
IF YOUR ROUTE CONTAINS...
DAILY, PALEO, or SWANN
use 125.65 / 348.725

- NOTE: DME/DME/IRU or GPS required.
- NOTE: Radar required.
- NOTE: RNAV 1.
- NOTE: Turbojet aircraft only.
- NOTE: Do not exceed 220 KIAS until crossing ADAXE.

TAKEOFF MINIMUMS:
Rwy 1: Standard with minimum climb of 625' per NM to 515' MSL.
Rwys 33: Standard with minimum climb of 540' per NM to 515' MSL.

NOTE: Pilots shall comply with Ronald Reagan Washington Natl Airport noise abatement and prohibited area (P-56) avoidance procedures as defined in Airport/Facility Directory Special Notices.

NOTE: Chart not to scale.



WASHINGTON/ RONALD REAGAN WASHINGTON NATIONAL (DCA) WASHINGTON, DC (LAZIR2.LAZIR) 12096 SL-443 (FAA)



DEPARTURE ROUTE DESCRIPTION

TAKEOFF RWY 1: Climb heading 004° to intercept course 329° to ADAXE, thence

TAKEOFF RWY 33: Climb heading 332° to 515 MSL, then right turn direct ADAXE, thence

. . . . Then on depicted route to LAZIR, then on heading 328°, expect radar vectors, maintain 5000, expect clearance to filed altitude ten (10) minutes after departure.

TAKEOFF OBSTACLE NOTES:

Rwy 1: Bldg 119' from DER, 330' right of centerline, 16' AGL/ 23' MSL.

Fence and trees beginning 261' from DER, 211' left of centerline, up to 62' AGL/72' MSL. Trees beginning 1365' from DER, 331' right of centerline, 47' AGL/51' MSL. Monument 1.7 NM from DER, 1784' left of centerline, 556' AGL/596' MSL.

Rwy 33: Trees beginning 140' from DER, left and right of centerline, up to 70' AGL/80' MSL. Blast fence beginning 174' from DER, left and right of centerline, up to 9' AGL/24' MSL. Poles beginning 1221' from DER, left and right of centerline, up to 73' AGL/106' MSL. Buildings beginning 1557' from DER, 623' left of centerline, up to 102' AGL/142' MSL. Elevator 1829' from DER, 345' right of centerline, 71' AGL/88' MSL.

NE-3, 31 MAY 2012 to 28 JUN 2012

NE-3, 31 MAY 2012 to 28 JUN 2012

NATIONAL TWO DEPARTURE (NATNL2.NATNL) 12096 WASHINGTON/ RONALD REAGAN WASHINGTON NATIONAL (DCA) WASHINGTON, DC

ATIS 132.65
CLNC DEL 128.25
GND CON 121.7 257.6
WASHINGTON TOWER 119.1 257.6

DEPARTURE FREQUENCY
IF YOUR ROUTE CONTAINS...
AML VOR/DME, BUFFR, CSN VORTAC, FLUKY, GINYA, GVE VORTAC, HAFNR, LDN VORTAC, MOL VOR/DME, PAUKI, JERES or RAMAY
use 118.95 / 257.2

RAMAY
N38°57.64'
W78°12.98'
L-29, H-10-12

BUFFR
N39°27.56'
W77°35.90'
L-29-34, H-10-12

JERES
N39°38.57'
W77°27.30'
L-29-34, H-10-12

DEPARTURE FREQUENCY
IF YOUR ROUTE CONTAINS...
DAILY, PALEO, or SWANN
use 125.65 / 348.725

SWANN
N39°09.09'
W76°13.73'
L-34-36, H-10-12

PALEO
N39°01.68'
W76°22.36'
L-29-34-36, H-10-12

GINYA
N38°56.55'
W77°40.80'
L-29-34, H-10-12

ARMEL
113.5 AML
Chan 82
N38°56.08'
W77°28.00'
L-29-34-36, H-10-12

PROHIBITED AREA
P-56 1.5 NM NORTH
OF AIRPORT

LDN
114.3 LDN
Chan 90
N38°51.26'
W78°12.33'
L-29-34, H-10-12

CASANOVA
116.3 CSN
Chan 110
N38°38.47'
W77°51.93'
L-29-34-36, H-10-12

WASHINGTON
111.0 DCA
Chan 47
N38°51.57'
W77°02.19'
L-29-34-36, H-10-12

DAILY
N38°33.63'
W76°43.52'
L-29-34-36, H-10-12

MONTEBELLO
115.3 MOL
Chan 100
N37°54.03'
W79°06.41'
L-26, H-10-12

PAUKI
N38°07.43'
W78°27.21'
L-26-36, H-10-12

FLUKY
N38°30.39'
W77°43.75'
L-29-34-36, H-10-12

HAFNR
N38°23.84'
W77°33.98'
L-29-34-36, H-10-12

GORDONSVILLE
115.6 GVE
Chan 103
N38°00.82'
W78°09.18'
L-34-36, H-10-12

NOTE: Radar required.
NOTE: Pilots shall comply with Ronald Reagan Washington Natl Airport noise abatement and prohibited area (P-56) avoidance procedures as defined in Airport/Facility Directory Special Notices.

(NARRATIVE ON FOLLOWING PAGE)

NOTE: Chart not to scale.

(NATNL2.NATNL) 12096 WASHINGTON/ RONALD REAGAN WASHINGTON NATIONAL (DCA) WASHINGTON, DC



DEPARTURE ROUTE DESCRIPTION

TAKEOFF RWY 1: Climbing left turn as soon as practical to intercept DCA VOR/DME R-328 to 5000 or as assigned, thence

TAKEOFF RWY 4: Climbing right turn as soon as practical to intercept DCA VOR/DME R-070 to 2000 or as assigned, thence

TAKEOFF RWY 15: Climbing right turn as soon as practical to intercept DCA VOR/DME R-185 to 5000 or as assigned, thence

TAKEOFF RWY 19: Climb on DCA VOR/DME R-185 to 5000 or as assigned, thence

TAKEOFF RWY 22: Climbing left turn as soon as practical to intercept DCA VOR/DME R-185 to 5000 or as assigned, thence

TAKEOFF RWY 33: Climb on DCA VOR/DME R-328 to 5000 or as assigned, thence

. . . . Expect radar vectors to filed/assigned fix.

TAKEOFF MINIMUMS:

Rwy 1: 600-2 with minimum climb of 270' per NM to 1400 or standard with minimum climb of 500' per NM to 800.

Rwy 4: 400-3 or standard with minimum climb of 500' per NM to 420.

Rwy 15: 300-1¾ or standard with minimum climb of 205' per NM to 300.

Rwy 19: 300-1½ or standard with minimum climb of 205' per NM to 300.

Rwy 22: 500-3 or standard with minimum climb of 280' per NM to 700.

Rwy 33: Standard with minimum climb of 246' per NM to 1100.

TAKEOFF OBSTACLE NOTES:

Rwy 1: Bldg 119' from DER, 330' right of centerline, 16' AGL/23' MSL. Fence and trees beginning 261' from DER, 211' left of centerline, up to 62' AGL/72' MSL. Trees beginning 1365' from DER, 331' right of centerline, 47' AGL/51' MSL. Monument 1.7 NM from DER, 1784' left of centerline, 556' AGL/596' MSL.

Rwy 4: Monument 2.4 NM from DER, 656' right of centerline, 307' AGL/377' MSL.

Rwy 15: Tree 1.4 NM from DER, 1290' left of centerline, 74' AGL/223' MSL.

Rwy 22: Poles beginning 500' from DER, on centerline, up to 11' AGL/28' MSL. Trees beginning 1024' from DER, 557' right of centerline, up to 78' AGL/90' MSL. Trmsn pole 4732' from DER, 888' right of centerline, 100' AGL/149' MSL. Bldg 4903' from DER, 651' right of centerline, 97' AGL/144' MSL. Tower 1.3 NM from DER, 1421' left of centerline, 170' AGL/223' MSL. Crane 1.7 NM from DER, 1912' right of centerline, 240' AGL/276' MSL. Bldg 1.9 NM from DER, 2566' right of centerline, 200' AGL/370' MSL.

Rwy 33: Trees beginning 140' from DER, left and right of centerline, up to 70' AGL/80' MSL. Blast fence beginning 174' from DER, left and right of centerline, up to 9' AGL/24' MSL. Poles beginning 1221' from DER, left and right of centerline, up to 73' AGL/106' MSL. Buildings beginning 1557' from DER, 623' left of centerline, up to 102' AGL/142' MSL. Elevator 1829' from DER, 345' right of centerline, 71' AGL/88' MSL. Flagpole 1.7 NM from DER, 2118' left of centerline, 108' AGL/308' MSL.

NE-3, 31 MAY 2012 to 28 JUN 2012

NE-3, 31 MAY 2012 to 28 JUN 2012