
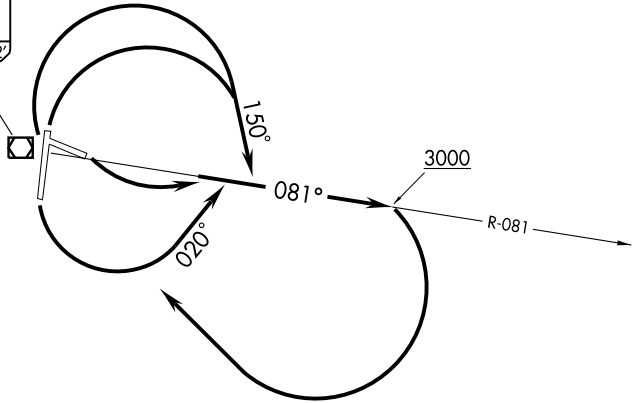


# CORVALLIS ONE DEPARTURE

AWOS-3 135.775  
CASCADE DEP CON ★  
127.5 348.7  
CTAF 123.0  
SEATTLE CENTER  
125.8

CORVALLIS  
115.4 CVO   
Chan 101  
N44°29.97'-W123°17.62'



### TAKEOFF MINIMUMS

Rwy 9, 200-1 or standard with minimum climb of 245' per NM to 500.  
Rwys 17/35, standard.  
Rwy 27, standard with minimum climb of 310' per NM to 2300.

### TAKEOFF OBSTACLE NOTES

Rwy 9: Multiple trees and railroad beginning 549' from DER, 254' left of centerline, up to 153' AGL/383' MSL.  
Multiple trees and railroad beginning 670' from DER, 5' right of centerline, up to 135' AGL/380' MSL.  
Rwy 27: OL on GS 409' from DER, 325' left of centerline, 28' AGL/273' MSL.  
Rwy 35: Multiple trees beginning 470' from DER, 544' left of centerline, up to 36' AGL/276' MSL.  
Tree 2.3 NM from DER, 1976' left of centerline, 128' AGL/607' MSL.

NOTE: Chart not to scale.

### DEPARTURE ROUTE DESCRIPTION


TAKE-OFF RUNWAY 9: Climbing left turn to 3000 via CVO R-081, thence. . . .  
TAKE-OFF RUNWAY 17: Climbing left turn to 3000 via heading 020° and CVO R-081, thence. . . .  
TAKE-OFF RUNWAYS 27 and 35: Climbing right turn to 3000 via heading 150° and CVO R-081, thence. . . .  
.... climbing right turn to 4000 direct CVO VOR/DME. Continue climb on course to MEA for route of flight.  
LOST COMMUNICATIONS: If not in contact with ATC upon reaching 3000', continue climb to assigned altitude direct CVO VOR/DME. Thence via assigned route of flight.

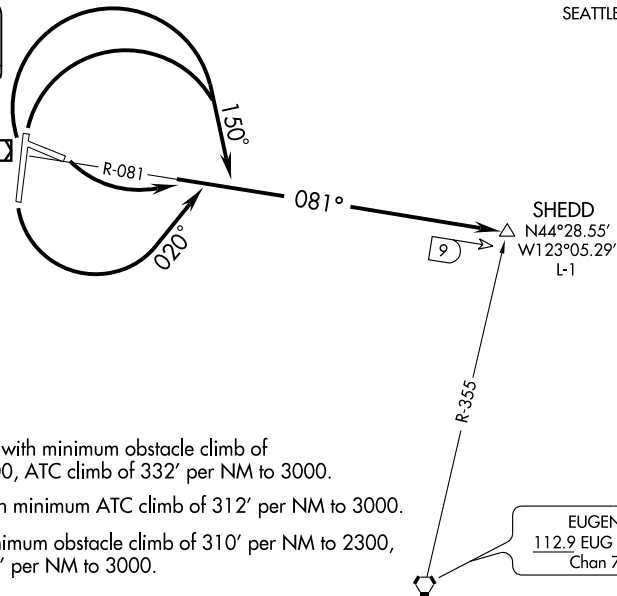
NW-1, 31 MAY 2012 to 28 JUN 2012

NW-1, 31 MAY 2012 to 28 JUN 2012

# SHEDD ONE DEPARTURE

AWOS-3 135.775  
CASCADE DEP CON \*  
127.5 348.7  
CTAF 123.0  
SEATTLE CENTER  
125.8

CORVALLIS  
115.4 CVO   
Chan 101  
N44°29.97'-W123°17.62'



### TAKEOFF MINIMUMS

- Rwy 9, 200-1 or standard with minimum obstacle climb of 245' per NM to 500, ATC climb of 332' per NM to 3000.
- Rwys 17/35, standard with minimum ATC climb of 312' per NM to 3000.
- Rwy 27, standard with minimum obstacle climb of 310' per NM to 2300, ATC climb of 312' per NM to 3000.

### TAKEOFF OBSTACLE NOTES

- Rwy 9: Multiple trees and railroad beginning 549' from DER, 254' left of centerline, up to 153' AGL/383' MSL.  
Multiple trees and railroad beginning 670' from DER, 5' right of centerline, up to 135' AGL/380' MSL.
- Rwy 27: OL on GS 409' from DER, 325' left of centerline, 28' AGL/273' MSL.
- Rwy 35: Multiple trees beginning 470' from DER, 544' left of centerline, up to 36' AGL/276' MSL.  
Tree 2.3 NM from DER, 1976' left of centerline, 128' AGL/607' MSL.

NOTE: Chart not to scale.

### DEPARTURE ROUTE DESCRIPTION

- TAKE-OFF RUNWAY 9: Climbing left turn to 3000 via CVO R-081 to SHEDD INT, thence. . . .
- TAKE-OFF RUNWAY 17: Climbing left turn to 3000 via heading 020° and CVO R-081 to SHEDD INT, thence. . . .
- TAKE-OFF RUNWAYS 27 and 35: Climbing right turn to 3000 via heading 150° and CVO R-081 to SHEDD INT, thence. . . .  
. . . .via assigned route/clearance.
- LOST COMMUNICATIONS: If not in contact with ATC upon reaching 3000', continue climb to assigned altitude direct CVO VOR/DME. Thence via assigned route of flight.

# SHEDD ONE DEPARTURE

NW-1, 31 MAY 2012 to 28 JUN 2012

NW-1, 31 MAY 2012 to 28 JUN 2012