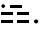
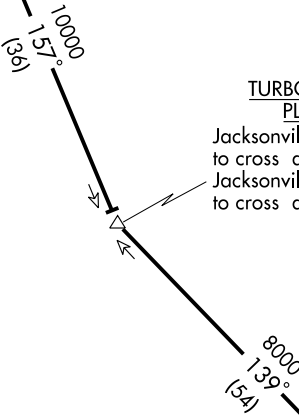


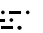
JACKSONVILLE APP CON
 127.0 322.4
 CECIL ATIS
 125.275
 CRAIG MUNI ATIS
 125.4
 JACKSONVILLE INTL ATIS
 125.85
 JACKSONVILLE NAS ATIS
 281.0
 MAYPORT NS ATIS★
 267.6

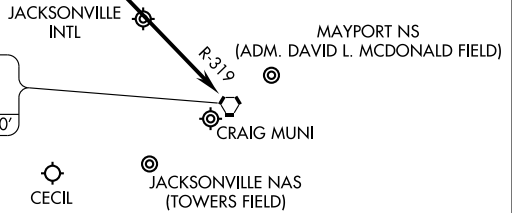
ALMA
 115.1 AMG 
 Chan 98
 N31°32.19' - W82°30.49'
 L-24, H-9-12

OHDEA
 N30°59.22' - W82°14.14'
TURBOJET VERTICAL NAVIGATION
PLANNING INFORMATION

Jacksonville Intl landing East: Expect clearance to cross at 12000' and 250K IAS.
 Jacksonville Intl landing West: Expect clearance to cross at 12000'.



CRAIG
 114.5 CRG 
 Chan 92
 N30°20.33' - W81°30.60'



NOTE: DME Required.

NOTE: Chart not to scale.

ARRIVAL DESCRIPTION

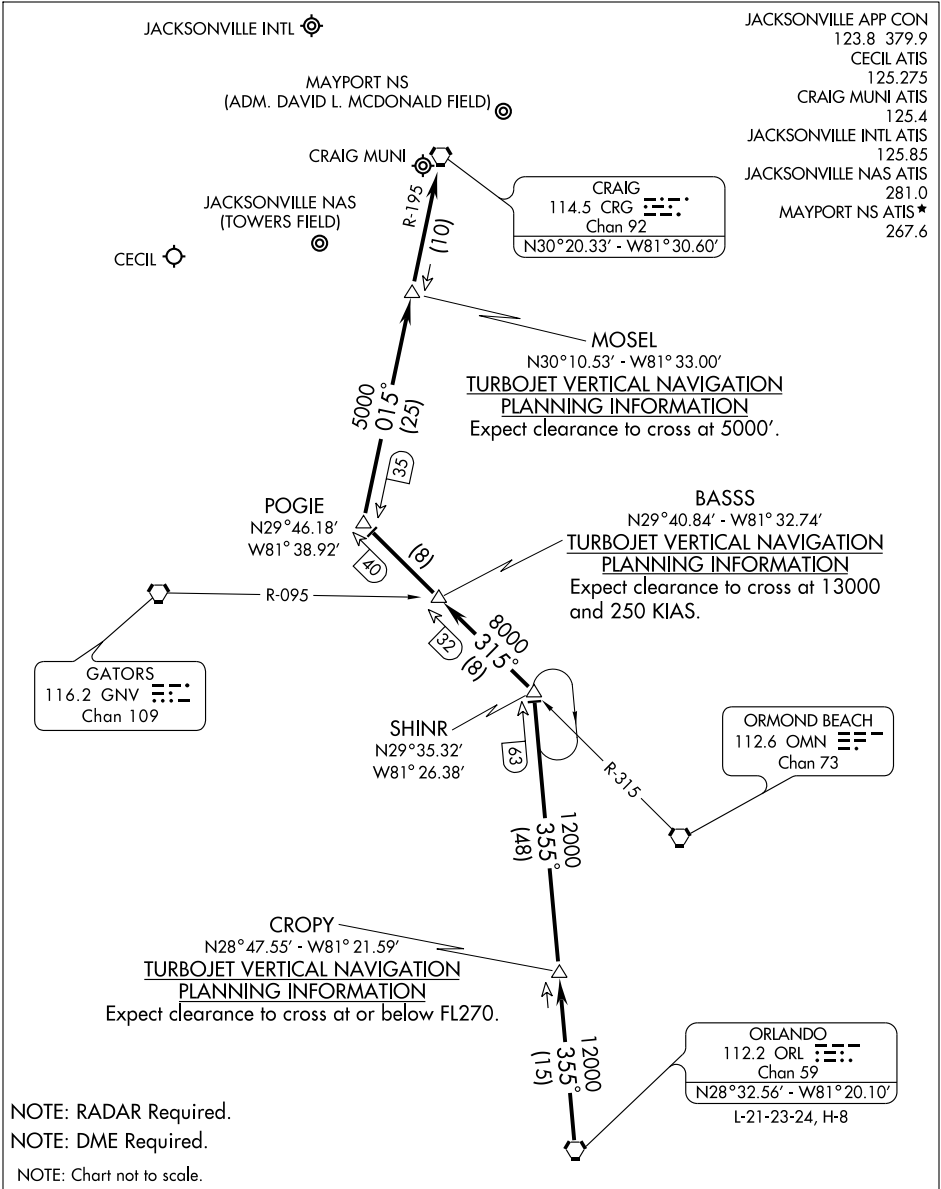
From over ALMA VORTAC via AMG R-157 to OHDEA INT, then via CRG R-319 to CRG VORTAC. Expect radar vectors to final approach course.

SE-3, 31 MAY 2012 to 28 JUN 2012

SE-3, 31 MAY 2012 to 28 JUN 2012

SE-3, 31 MAY 2012 to 28 JUN 2012

SE-3, 31 MAY 2012 to 28 JUN 2012



NOTE: RADAR Required.
 NOTE: DME Required.
 NOTE: Chart not to scale.

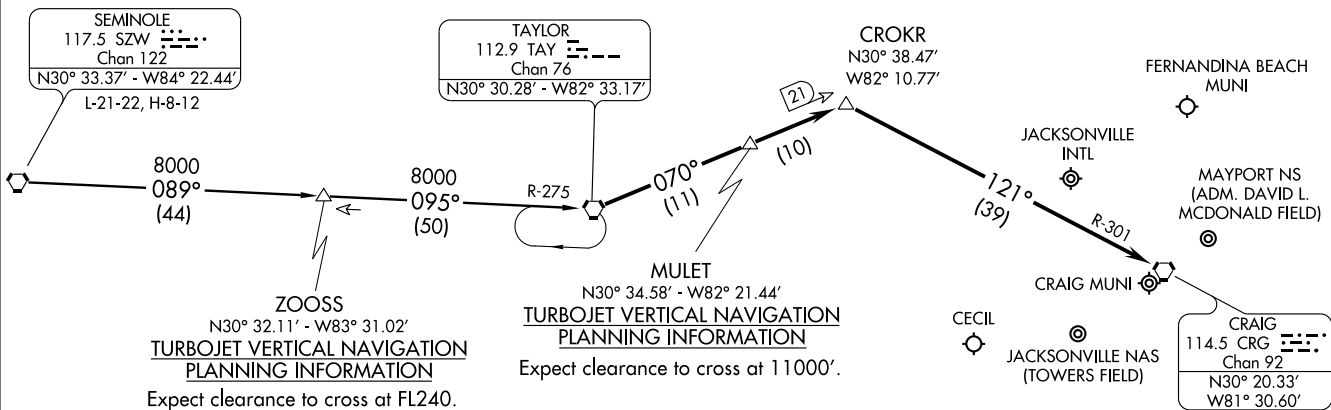
From over ORL VORTAC via ORL R-355 to SHINR INT, thence via OMN R-315 to POGIE INT, thence via CRG R-195 to CRG VORTAC. Expect radar vectors to final approach course after CRG VORTAC.

11069

TAYLOR TWO ARRIVAL (TAY.TAY2)

SEMINOLE TRANSITION (SZW.TAY2): From over SZW VORTAC via SZW R-089 and TAY R-275 to TAY VORTAC. Thence. . . .

. . . .From over TAY VORTAC via TAY R-070 to CROKR INT, thence to the CRG VORTAC via CRG R-301. Expect radar vectors to final approach course after CROKR INT.



NOTE: DME Required.

NOTE: Chart not to scale.

JACKSONVILLE, FLORIDA

TAYLOR TWO ARRIVAL (TAY.TAY2)

ST-5570 (FAA)

JACKSONVILLE, FLORIDA

11069