

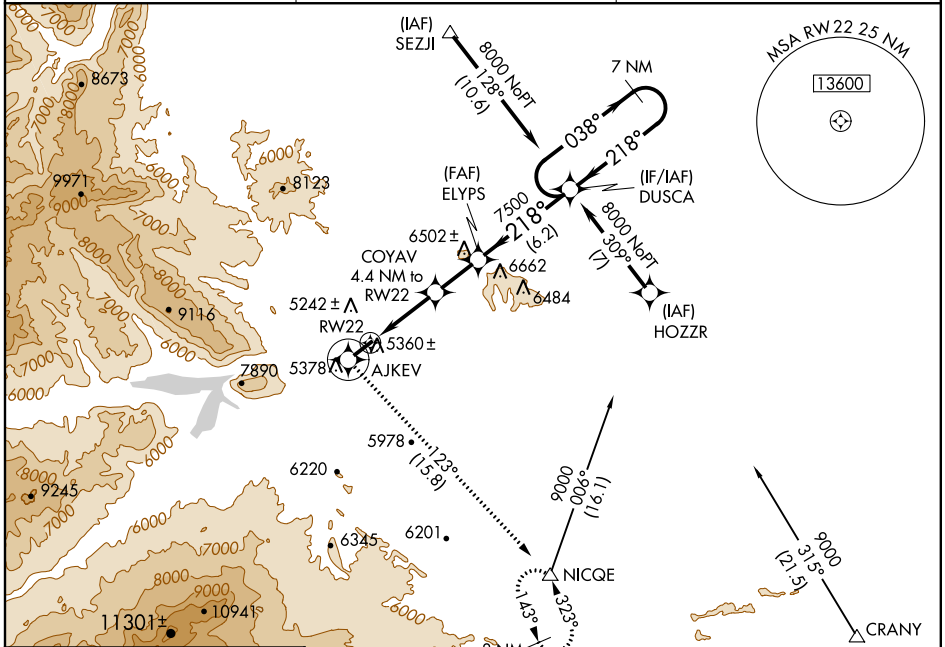
WAAS CH <b>93600</b> <b>W22A</b>	APP CRS <b>218°</b>	Rwy ldg TDZE Apt Elev <b>7178</b> <b>5076</b> <b>5102</b>
--	------------------------	--

# RNAV (GPS) RWY 22

YELLOWSTONE RGNL (COD)

<b>▽</b> <b>▲</b>	DME/DME RNP- 0.3 NA.	MISSED APPROACH: Climb to 9600 direct AJKEV and left turn via 123° track to NICQE and hold.
----------------------	----------------------	---

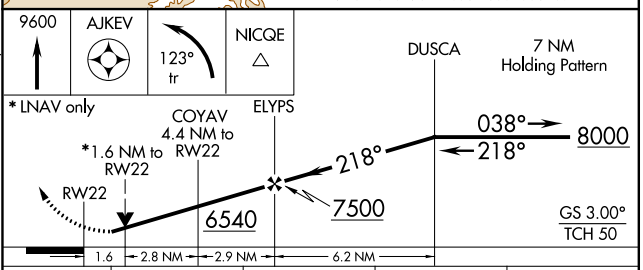
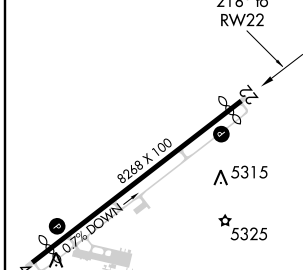
AWOS-3 <b>135.075</b>	SALT LAKE CENTER <b>133.25 285.6</b>	UNICOM <b>122.8 (CTAF) 0</b>
--------------------------	---	---------------------------------



NW-1, 08 JAN 2015 to 05 FEB 2015

NW-1, 08 JAN 2015 to 05 FEB 2015

ELEV 5102	<b>D</b>	TDZE 5076
-----------	----------	-----------



CATEGORY	A	B	C	D
LPV DA	5457-1¼ 381 (400-1¼)			
RNAV/ VNAV DA	NA			
RNAV MDA	5620-1	544 (600-1)	5620-1½ 544 (600-1½)	5620-1¾ 544 (600-1¾)
CIRCLING	5840-1¼	738 (800-1¼)	5900-2¼ 798 (800-2¼)	5960-2¾ 858 (900-2¾)

REIL Rwy 4 and 22 **0**  
HIRL Rwy 4-22 **0**

APP CRS <b>306°</b>	Rwy Idg TDZE Apt Elev	<b>N/A</b> <b>N/A</b> <b>5102</b>
------------------------	-----------------------------	---

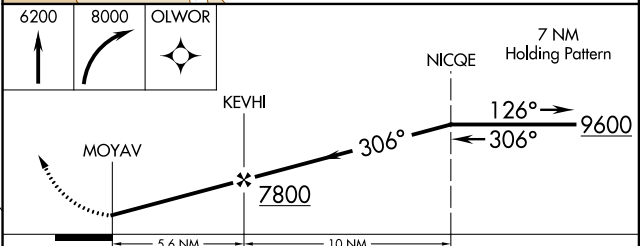
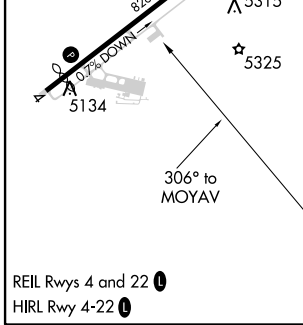
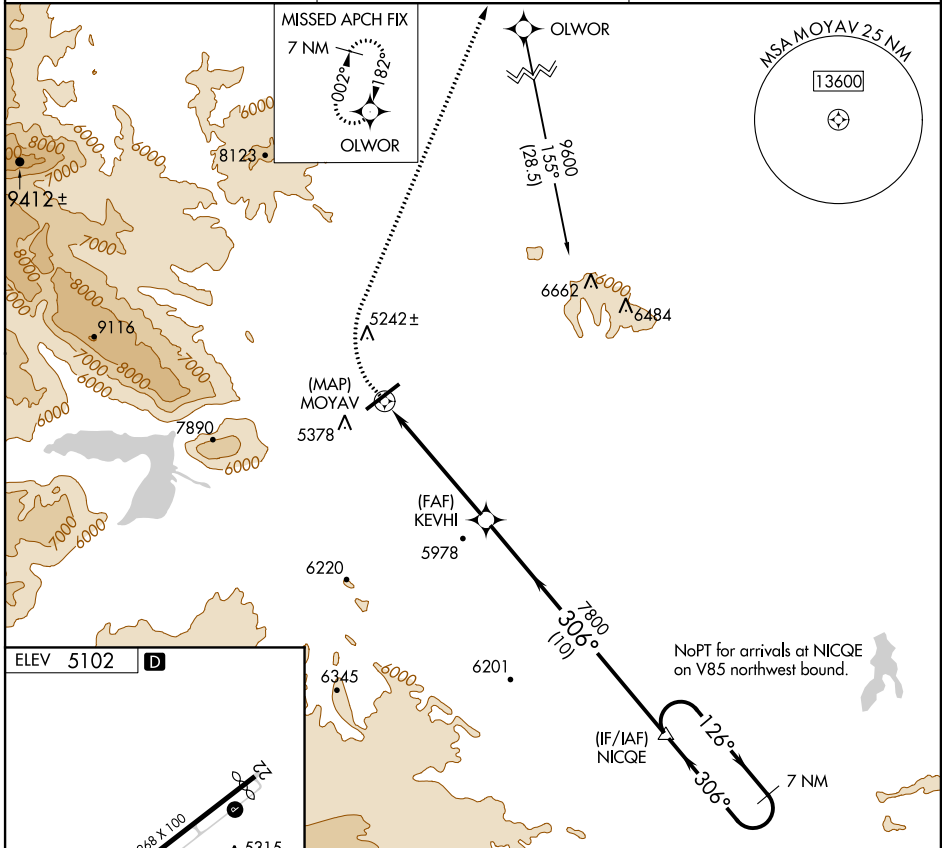
# RNAV (GPS)-B

YELLOWSTONE RGNL (COD)

**▼** When local altimeter setting not received, procedure NA.  
**▲** DME/DME RNP-0.3 NA.

MISSED APPROACH: Climb to 6200 then climbing right turn to 8000 direct OLOWOR and hold.

AWOS-3 <b>135.075</b>	SALT LAKE CENTER <b>133.25 285.6</b>	UNICOM <b>122.8 (CTAF) 0</b>
--------------------------	---	---------------------------------



CATEGORY	A	B	C	D
CIRCLING	6180-1¼ 1078 (1100-1¼)	6180-1½ 1078 (1100-1½)	6180-3	1078 (1100-3)

NW-1, 08 JAN 2015 to 05 FEB 2015

NW-1, 08 JAN 2015 to 05 FEB 2015

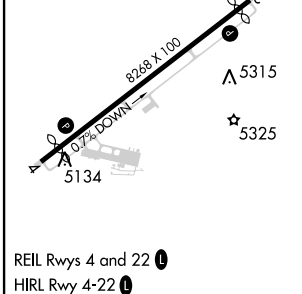
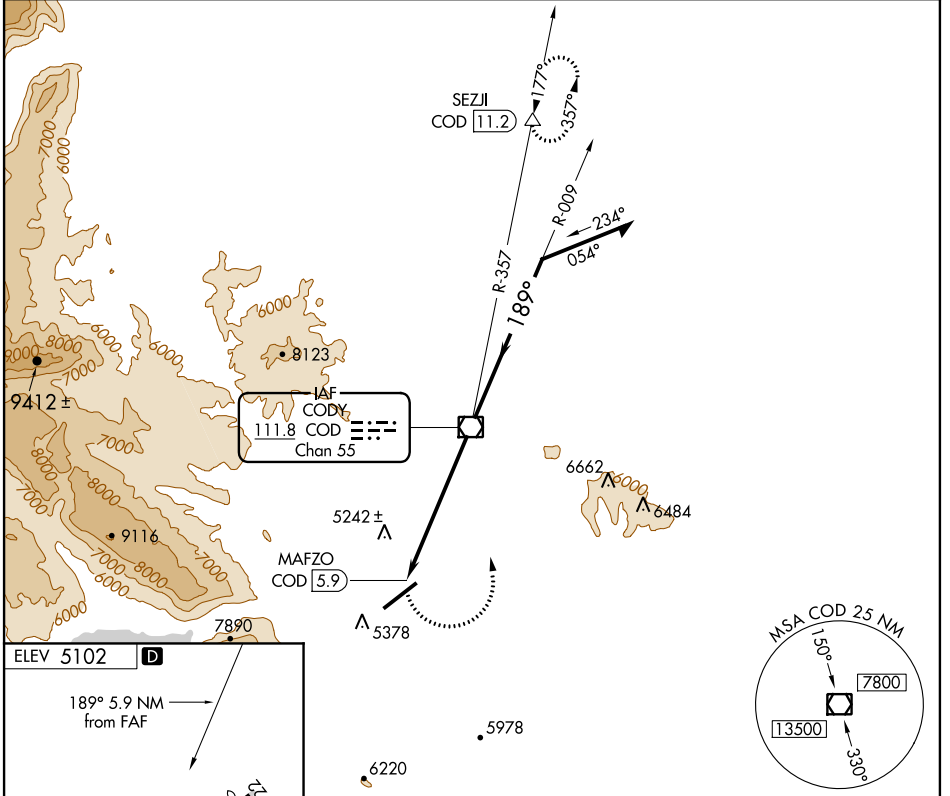
VOR/DME COD <b>111.8</b> Chan 55	APP CRS <b>189°</b>	Rwy Idg TDZE Apt Elev <b>N/A</b> <b>N/A</b> <b>5102</b>
--	------------------------	--

**VOR-A**  
YELLOWSTONE RGNL (COD)

When local altimeter setting not received, procedure NA.  
DME required.

MISSED APPROACH: Climbing left turn to 8400 direct COD VOR/DME and on COD VOR/DME R-357 to SEZJI/COD 11.2 DME and hold.

AWOS-3 <b>135.075</b>	SALT LAKE CENTER <b>133.25 285.6</b>	UNICOM <b>122.8 (CTAF)</b>
--------------------------	---	-------------------------------



8400	COD	COD R-357	SEZJI	Remain within 10 NM
8600	COD VOR/DME	8100	6500	
5.9 NM				

FAF to MAP 5.9 NM								
Knots	60	90	120	150	180			
Min:Sec	5:54	3:56	2:57	2:22	1:58			
CATEGORY	A		B		C	D		
CIRCLING	5800-1		698 (700-1)		5800-2	5920-2¾	698 (700-2)	818 (900-2¾)

NW-1, 08 JAN 2015 to 05 FEB 2015

NW-1, 08 JAN 2015 to 05 FEB 2015