

# RNAV (GPS) RWY 3

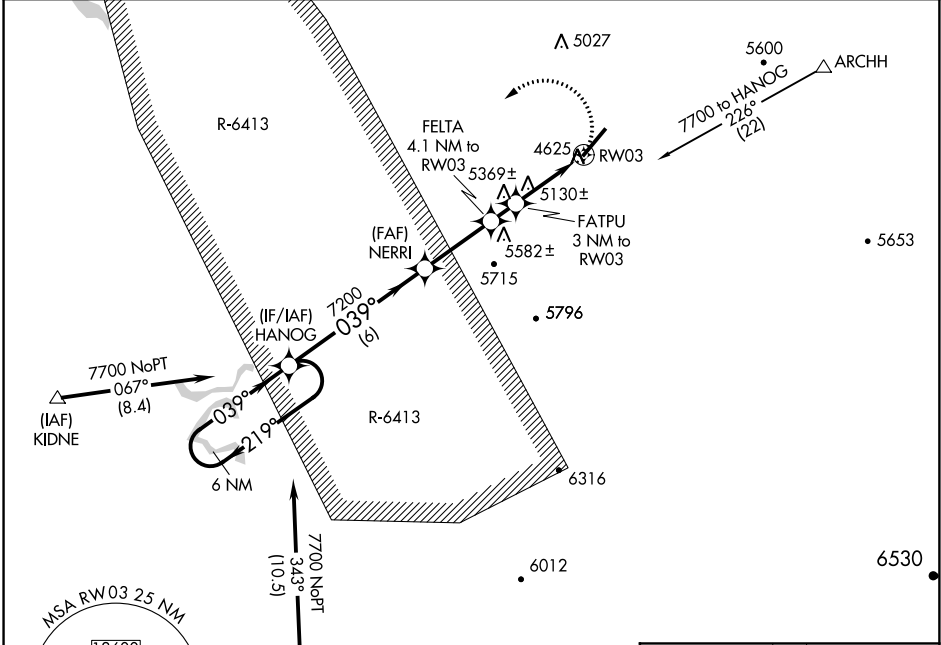
## CANYONLANDS FIELD (CNY)

APP CRS <b>039°</b>	Rwy Idg <b>7100</b>
	TDZE <b>4557</b>
	Apt Elev <b>4557</b>

**NA** DME/DME RNP-0.3 NA. Procedure NA when R-6413 in operation. Helicopter visibility reduction below 3/4 SM NA.

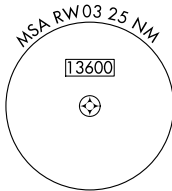
**MISSED APPROACH:** Climbing left turn to 7700 direct HANOG WP and hold.

ASOS <b>118.525</b>	DENVER CENTER <b>134.5 327.8</b>	UNICOM <b>122.8 (CTAF)</b>
------------------------	-------------------------------------	-------------------------------

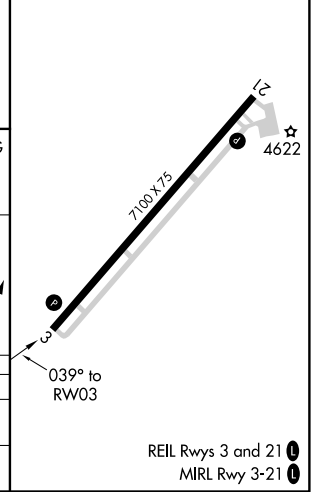
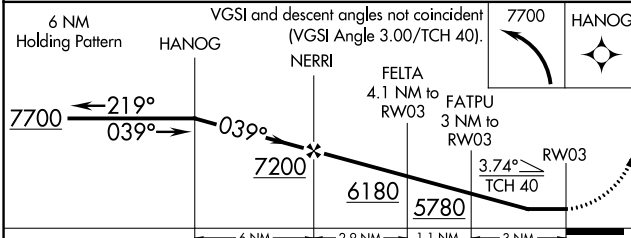


SW-4, 09 NOV 2017 to 07 DEC 2017

SW-4, 09 NOV 2017 to 07 DEC 2017



ELEV 4557	<b>D</b> TDZE 4557
-----------	--------------------



CATEGORY	A	B	C	D
LNVA MDA	5380-1 823 (900-1)	5380-1¼ 823 (900-1¼)	5380-2½ 823 (900-2½)	823 (900-2½)
CIRCLING	5380-1¼ 823 (900-1¼)		5380-2½ 823 (900-2½)	5440-3 883 (900-3)

REIL Rwy 3 and 21 **D**  
MIRL Rwy 3-21 **D**

VOR/DME OAB <b>109.8</b> Chan 35	APP CRS <b>113°</b>	Rwy Idg TDZE Apt Elev	<b>N/A</b> <b>N/A</b> <b>4557</b>
--	------------------------	-----------------------------	---

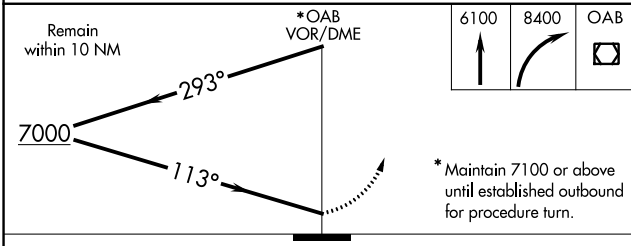
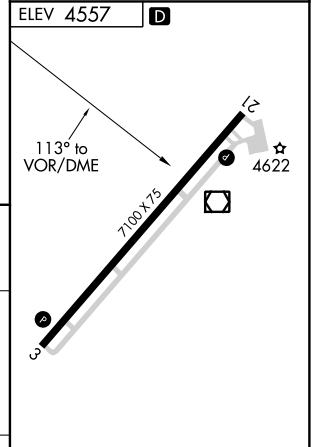
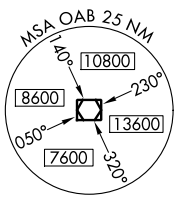
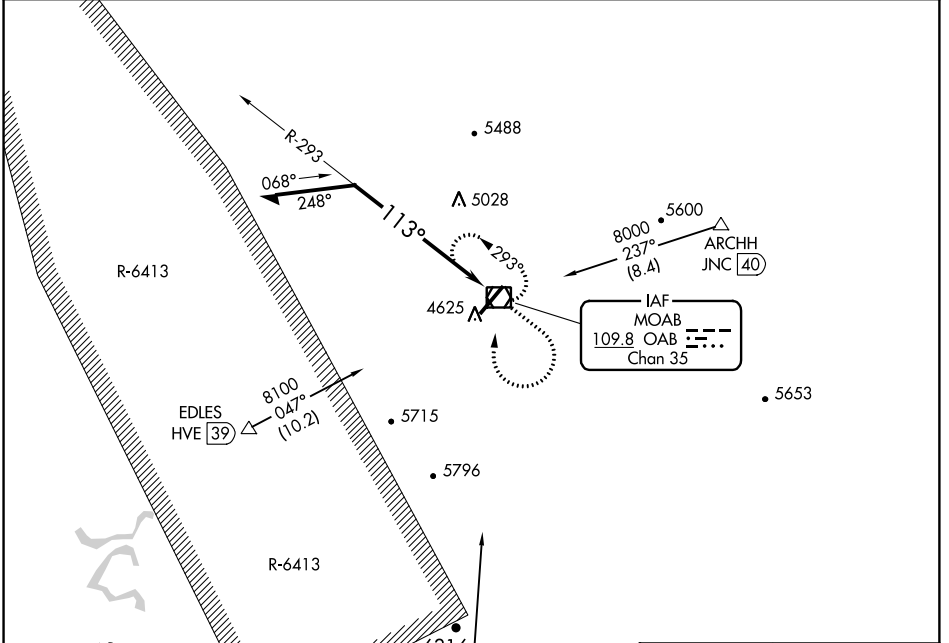
# VOR-A

## CANYONLANDS FIELD (CNY)

**NA** Procedure not authorized when R-6413 in operation.

MISSED APPROACH: Climb to 6100 then climbing right turn to 8400 direct OAB VOR/DME and hold, continue climb-in-hold to 8400.

ASOS <b>118.525</b>	DENVER CENTER <b>134.5 327.8</b>	UNICOM <b>122.8 (CTAF)</b>
------------------------	-------------------------------------	-------------------------------



CATEGORY	A	B	C	D
CIRCLING	5640-1¼ 1083 (1100-1¼)	5640-1½ 1083 (1100-1½)	5640-3	1083 (1100-3)

REIL Rwys 3 and 21  
MIRL Rwy 3-21

SW-4, 09 NOV 2017 to 07 DEC 2017

SW-4, 09 NOV 2017 to 07 DEC 2017