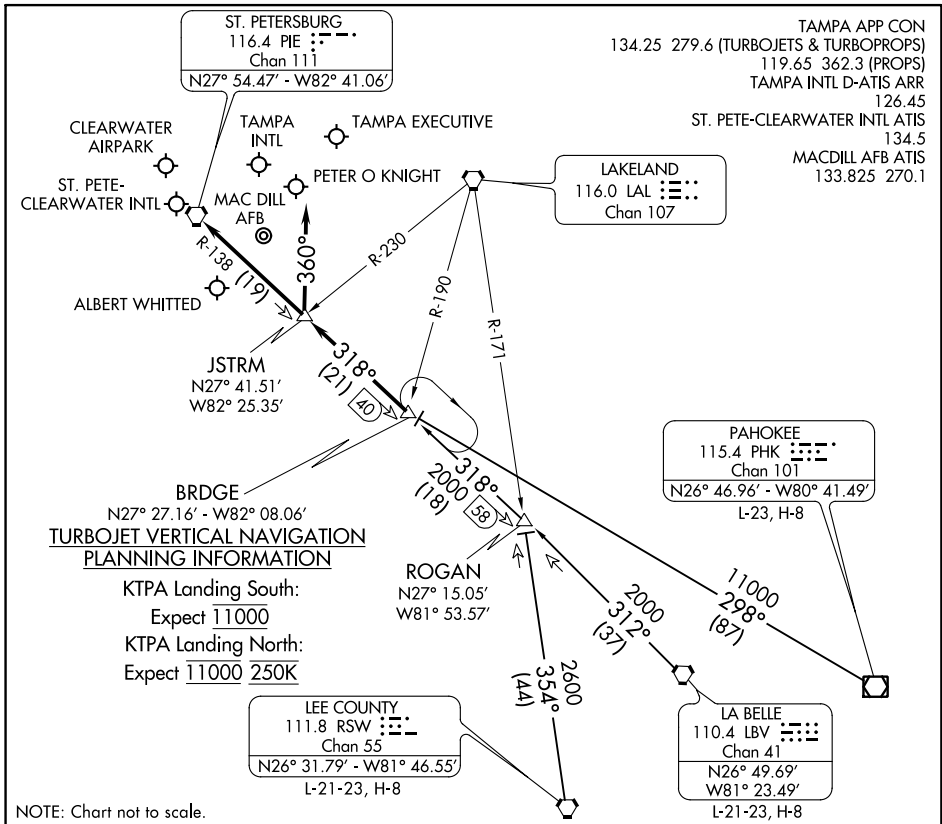


# BRDGE EIGHT ARRIVAL

TAMPA, FLORIDA



SE-3, 09 NOV 2017 to 07 DEC 2017

SE-3, 09 NOV 2017 to 07 DEC 2017

## ARRIVAL ROUTE DESCRIPTION

**LA BELLE TRANSITION (LBV.BRDGE8):** From over LBV VORTAC on LBV R-312 & PIE R-138 to BRDGE INT. Thence. . .

**LEE COUNTY TRANSITION (RSW.BRDGE8):** From over RSW VORTAC on RSW R-354 to ROGAN INT, then on PIE R-138 to BRDGE INT. Thence. . .

**PAHOKEE TRANSITION (PHK.BRDGE8):** From over PHK VOR/DME on PHK R-298 to BRDGE INT. Thence. . .

### KTPA:

. . . RWY 19L/R: From over BRDGE INT on PIE R-138 to JSTRM INT. Depart JSTRM INT heading 360° for vector to final approach course.

. . . RWY 01L/R: From over BRDGE INT on PIE R-138 to PIE VORTAC. Expect RADAR vector to final approach course after BRDGE INT.

### KPIE, KCLW, KTPF, KSPG, KMCF, KVDF:

. . . From over BRDGE INT on PIE R-138 to PIE VORTAC. Expect RADAR vector to final approach course/airport after BRDGE INT.

**LOST COMMUNICATIONS:** STANDARD.

# BRDGE EIGHT ARRIVAL

TAMPA, FLORIDA