

CHARDON TWO ARRIVAL
(CXR.CXR2) 11349

CHARDON TWO ARRIVAL
(CXR.CXR2) 11349

SI-84 (FAA)

CLEVELAND, OHIO

BURKE LAKEFRONT ATIS
125.25
CLEVELAND HOPKINS ATIS
127.85
CLEVELAND APP CON
126.55 354.025



DRYER
113.6 DJB
Chan 83

LORAIN COUNTY
RGNL

ELYRIA

MEDINA
MUNI

AKRON
114.4 ACO
Chan 91

WILLOUGHBY
LOST NATION
MUNI

CUYAHOGA
COUNTY

CLEVELAND
HOPKINS
INTL

LEBRN
N41°27.13'
W81°38.60'

CHARDON
112.7 CXR
Chan 74

N41°31.02'-W81°09.79'

VERTICAL NAVIGATION

PLANNING INFORMATION

TURBOJET: Expect clearance to cross at 10,000' and 250 Kts.
PROPS: Expect clearance to cross at 9000'.

NOTE: RADAR Required.

NOTE: Chart not to scale.

CONCORD
AIRPARK

JEFFERSON
115.2 JFN
Chan 99

GEAGA
N41°33.97'
W80°55.68'

7000

259° (11)

3000

265° (22)

7000

302° (25)

7000

302° (25)

7000

302° (25)

7000

302° (25)

7000

302° (25)

7000

302° (25)

7000

302° (25)

7000

302° (25)

7000

302° (25)

7000

302° (25)

7000

302° (25)

7000

302° (25)

7000

302° (25)

7000

302° (25)

FL180
233° (39)

R-156

R-097

R-079

R-086

R-079

R-086

R-079

R-086

R-079

R-086

R-079

R-086

R-079

R-086

R-079

R-086

R-079

R-086

R-079

R-086

R-079

R-086

R-079

R-086

R-079

R-086

R-079

R-086

R-079

R-086

R-079

R-086

R-079

R-086

R-079

R-086

R-079

R-086

R-079

R-086

ERIE
109.4 ERI
Chan 31
N42°01.04'
W80°17.56'
L-30, H-10

R-156

R-097

R-079

R-086

R-079

R-086

R-079

R-086

R-079

R-086

R-079

R-086

R-079

R-086

R-079

R-086

R-079

R-086

R-079

R-086

R-079

R-086

R-079

R-086

R-079

R-086

R-079

R-086

R-079

R-086

R-079

R-086

R-079

R-086

R-079

R-086

R-079

R-086

R-079

R-086

R-079

R-086

R-079

FL180
233° (39)

R-156

R-097

R-079

R-086

R-079

R-086

R-079

R-086

R-079

R-086

R-079

R-086

R-079

R-086

R-079

R-086

R-079

R-086

R-079

R-086

R-079

R-086

R-079

R-086

R-079

R-086

R-079

R-086

R-079

R-086

R-079

R-086

R-079

R-086

R-079

R-086

R-079

R-086

R-079

R-086

R-079

R-086

FL180
245° (51)

R-156

R-097

R-079

R-086

R-079

R-086

R-079

R-086

R-079

R-086

R-079

R-086

R-079

R-086

R-079

R-086

R-079

R-086

R-079

R-086

R-079

R-086

R-079

R-086

R-079

R-086

R-079

R-086

R-079

R-086

R-079

R-086

R-079

R-086

R-079

R-086

R-079

R-086

R-079

R-086

R-079

R-086

11000

270° (116)

R-097

R-079

R-086

R-079

R-086

R-079

R-086

R-079

R-086

R-079

R-086

R-079

R-086

R-079

R-086

R-079

R-086

R-079

R-086

R-079

R-086

R-079

R-086

R-079

R-086

R-079

R-086

R-079

R-086

R-079

R-086

R-079

R-086

R-079

R-086

R-079

R-086

R-079

R-086

R-079

R-086

ARRIVAL ROUTE DESCRIPTION

BRADFORD TRANSITION (BFD.CXR2): From over BFD VOR/DME via BFD R-270 and CXR R-086 to CXR VOR/DME. Thence . . .

ERIE TRANSITION (ERI.CXR2): From over ERI VORTAC via ERI R-233 to GEAGA INT, then via CXR R-079 to CXR VOR/DME. Thence . . .

JAMESTOWN TRANSITION (JHW.CXR2): (For use by BUF departures only and as assigned by ATC) From over JHW VOR/DME via JHW R-245 to ALLCO INT, then via CXR R-079 to CXR VOR/DME. Thence . . .

YOUNGSTOWN TRANSITION (YNG.CXR2): From over YNG VORTAC via YNG R-302 and CXR R-122 to CXR VOR/DME. Thence . . .

. . . From CXR VOR/DME via R-265 to LEBRN INT, expect vectors to final approach course.

HIMEZ TWO ARRIVAL
(MACCS, HIMEZ2) 12040

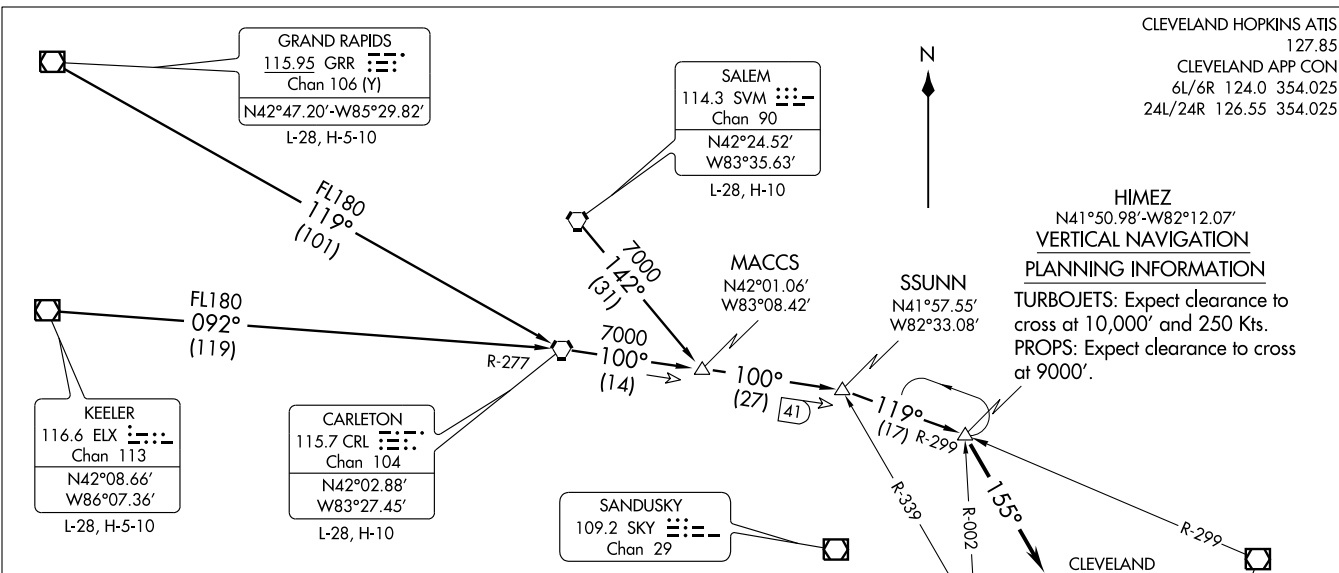
(MACCS, HIMEZ2) 12040
HIMEZ TWO ARRIVAL

ST-84 (FAA)

CLEVELAND, OHIO

CLEVELAND HOPKINS ATIS
127.85
CLEVELAND APP CON
6L/6R 124.0 354.025
24L/24R 126.55 354.025

HIMEZ
N41°50.98'-W82°12.07'
VERTICAL NAVIGATION
PLANNING INFORMATION
TURBOJETs: Expect clearance to cross at 10,000' and 250 Kts.
PROPS: Expect clearance to cross at 9000'.



ARRIVAL ROUTE DESCRIPTION

CARLETON TRANSITION (CRL.HIMEZ2): From over CRL VORTAC via CRL R-100 to SSUNN INT, then via CXR R-299 to HIMEZ INT. Thence. . . .

GRAND RAPIDS TRANSITION (GRR.HIMEZ2): From over GRR VOR/DME via GRR R-119 to CRL VORTAC, then via CRL R-100 to SSUNN INT, then via CXR R-299 to HIMEZ INT. Thence. . . .

KEELER TRANSITION (ELX.HIMEZ2): From over ELX VOR/DME via ELX R-092 and CRL R-277 to CRL VORTAC, then via CRL R-100 to SSUNN INT, then via CXR R-299 to HIMEZ INT. Thence. . . .

SALEM TRANSITION (SVM.HIMEZ2): From over SVM VORTAC via SVM R-142 to MACCS INT, then via CRL R-100 to SSUNN INT, then via CXR R-299 to HIMEZ INT. Thence. . . .

. . . . From over HIMEZ INT, fly heading 155°. Expect radar vectors to final approach course.

NOTE: RADAR Required.
NOTE: Chart not to scale.

CLEVELAND, OHIO

(KEATN.KEATN6) 12040

KEATN SIX ARRIVAL

ST-84 (FAA)

CLEVELAND, OHIO

BURKE LAKEFRONT ATIS
125.25
CLEVELAND - HOPKINS ATIS
127.85
CLEVELAND APP CON
Rwys 6L/6R: 124.0 360.6
Rwys 24L/24R: 126.55 360.6

WILLOUGHBY
LOST NATION
MUNI

CONCORD
AIRPARK

DRYER
113.6 DJB
Chan 83

CUYAHOGA
COUNTY

BURKE
LAKEFRONT

GEAUGA
COUNTY

LORAIN
COUNTY
RGNL

ELYRIA

CLEVELAND -
HOPKINS
INTL

MEDINA
MUNI

KEATN
N40°55.88'-W81°39.34'
VERTICAL NAVIGATION
PLANNING INFORMATION
TURBOJETS: Expect 10000
PROPS: Expect 9000

EC-2, 31 MAY 2012 to 28 JUN 2012

EC-2, 31 MAY 2012 to 28 JUN 2012

TIVERTON
116.5 TVT
Chan 112
N40°27.48'-W82°07.61'
L-29

LENRD
N40°34.17'
W82°01.00'

BRIGGS
112.4 BSV
Chan 71
N40°44.44'
W81°25.93'
L-29, H-10

NEWCOMERTOWN
111.8 CTW
Chan 55

NOTE: RADAR Required.
NOTE: Chart not to scale.

ARRIVAL ROUTE DESCRIPTION

BRIGGS TRANSITION (BSV.KEATN6): From over BSV VOR/DME via BSV R-322 to KEATN INT.
Thence . . .

TIVERTON TRANSITION (TVT.KEATN6): From over TVT VOR/DME via TVT R-040 to KEATN INT.
Thence . . .

LANDING CLEVELAND-HOPKINS INTL. RWY 24L/R and 28: Depart KEATN INT heading 345°.
Expect Radar vectors to final approach course.

LANDING CLEVELAND-HOPKINS INTL. RWY 6L/R and 10: Depart KEATN INT via DJB R-143 to
DJB VOR/DME. Expect Radar vectors to final approach course.

LANDING ALL OTHER AIRPORTS: From KEATN INT expect Radar vectors to final approach course.

KEATN SIX ARRIVAL

CLEVELAND, OHIO

(KEATN.KEATN6) 12040

BURKE LAKEFRONT ATIS
125.25
CLEVELAND HOPKINS ATIS
127.85
CLEVELAND APP CON
126.55 354.025

FLAG CITY
108.2 FBC
Chan 19

SANDUSKY
109.2 SKY
Chan 29

LORAIN COUNTY RGNL
WILLOUGHBY LOST NATION MUNI
CONCORD AIRPARK
BURKE LAKEFRONT
ELYRIA
CUYAHOGA COUNTY
CLEVELAND - HOPKINS INTL
GEAUGA COUNTY

JAKEE
N41°17.51' W82°01.70'

MANSFIELD
108.8 MFD
Chan 25
N40°52.12'-W82°35.46'

WARGO
N40°32.99' W83°00.23'

GOURD
N40°25.84' W83°09.40'

APPLETON
116.7 APE
Chan 114

CINCINNATI
117.3 CVG
Chan 120
N39°00.96'-W84°42.20'

FALMOUTH
117.0 FLM
Chan 117

LOUISVILLE
114.8 IUU
Chan 95
N38°06.21'-W85°34.65'

ROSEWOOD
117.5 ROD
Chan 122
N40°17.27'-W84°02.59'
L-27, H-10

DAYTON
114.5 DQN
Chan 92
N40°00.99'-W84°23.81'
L-27, H-10

BRICKYARD
116.3 VHP
Chan 110

JUDDI
N38°45.56' W86°26.41'

POCKET CITY
113.3 PXV
Chan 80
N37°55.70' W87°45.74'
L-16, H-5

MOSEY
N38°42.56' W85°22.54'

JARRD
N39°58.56' W83°41.30'

DRUGA
N39°41.28' W83°59.81'

NABB
112.4 ABB
Chan 71

ZABER
N40°57.27'-W82°28.67'
VERTICAL NAVIGATION
PLANNING INFORMATION
TURBOJET: Expect 10000
PROPS: Expect 9000

- NOTE: Dayton Transition for use Indianapolis Intl/James M Cox Dayton Intl departures only.
- NOTE: Pocket City Transition: DME required at JUDDI INT.
- NOTE: Rosewood Transition for use by non-turbojet aircraft only or ATC use as assigned.
- NOTE: RADAR required.

NOTE: Chart not to scale.

(NARRATIVE ON FOLLOWING PAGE)



ARRIVAL ROUTE DESCRIPTION

CINCINNATI TRANSITION (CVG.ZABER3): From over CVG VORTAC via CVG R-043 to TOOOK INT, then via MFD R-228 to MFD VORTAC, then via MFD R-048 to ZABER INT. Thence

DAYTON TRANSITION (DQN.ZABER3): From over DQN VOR/DME via DQN R-095 to JARRD INT, then via CVG R-043 to TOOOK INT, then via MFD R-228 to MFD VORTAC, then via MFD R-048 to ZABER INT. Thence

LOUISVILLE TRANSITION (IIIU.ZABER3): From over IIIU VORTAC via IIIU R-036 and CVG R-221 to CVG VORTAC, then via CVG R-043 to TOOOK INT, then via MFD R-228 to MFD VORTAC, then via MFD R-048 to ZABER INT. Thence

POCKET CITY TRANSITION (PXV.ZABER3): From over PXV VORTAC via PXV R-048 to JUDDI INT, then via FLM R-278 to MOSEY INT, then via CVG R-244 to CVG VORTAC, then via CVG R-043 to TOOOK INT, then via MFD R-228 to MFD VORTAC, then via MFD R-048 to ZABER INT. Thence

ROSEWOOD TRANSITION (ROD.ZABER3): From over ROD VORTAC via ROD R-046 to LAWTO INT, then via MFD R-265 to MFD VORTAC, then via MFD R-048 to ZABER INT. Thence

. . . . From over ZABER INT via MFD R-048 to JAKEE INT. Expect radar vectors to final approach course.

EC-2, 31 MAY 2012 to 28 JUN 2012

EC-2, 31 MAY 2012 to 28 JUN 2012