

ALPHE THREE DEPARTURE (RNAV)
 (ALPHE3,ALPHE) 11013

CLEVELAND, OHIO
 CLEVELAND-HOPKINS INTL (CLE)
 (ALPHE3,ALPHE) 11013

ATIS DEP
 132.375
 CLEVELAND DEP CON
 128.25 346.325



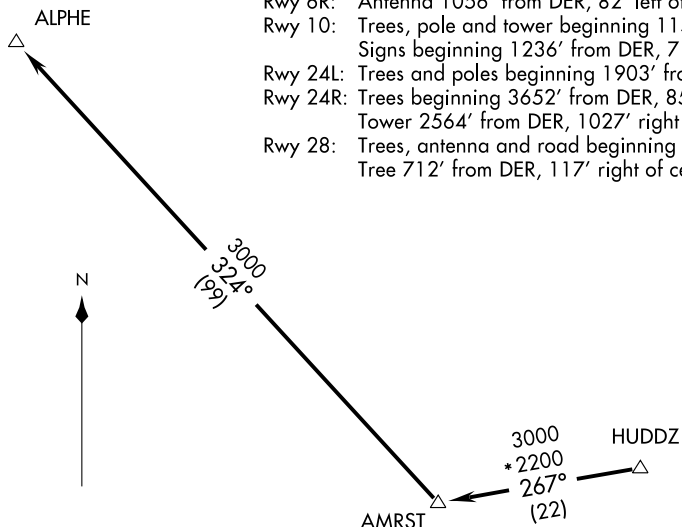
DEPARTURE ROUTE DESCRIPTION

TAKE-OFF RUNWAYS 6L, 6R, 10, 24L, 24R, 28: Climb via assigned heading to 5000
 thence

. . . . or assigned altitude for radar vectors to HUDDZ, then via 267° track to AMRST, then
 via 324° track to ALPHE. Expect filed altitude/flight level ten (10) minutes after departure.

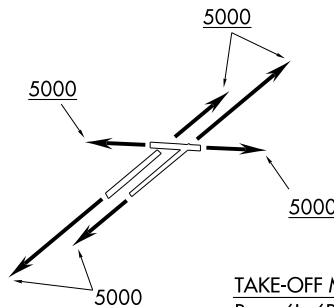
TAKE-OFF OBSTACLES:

- Rwy 6R: Antenna 1056' from DER, 82' left of centerline, 45' AGL/820' MSL.
- Rwy 10: Trees, pole and tower beginning 1159' from DER, 656' right of centerline, up to 137' AGL/922' MSL. Signs beginning 1236' from DER, 717' left of centerline, up to 86' AGL/857' MSL.
- Rwy 24L: Trees and poles beginning 1903' from DER, 5' left of centerline, up to 89' AGL/849' MSL.
- Rwy 24R: Trees beginning 3652' from DER, 856' left of centerline, up to 100' AGL/870' MSL.
- Rwy 28: Tower 2564' from DER, 1027' right of centerline, 191' AGL/870' MSL. Tree 712' from DER, 117' right of centerline, 135' AGL/811' MSL.



- NOTE: RADAR Required for non-GPS equipped aircraft.
- NOTE: RNAV 1.
- NOTE: DME/DME/IRU or GPS Required.

MANSFIELD
 MFD



TAKE-OFF MINIMUMS:

Rwys 6L, 6R, 10, 24L, 24R,
 28: Standard.

NOTE: Chart not to scale.

(ALPHE3,ALPHE) 11013
 ALPHE THREE DEPARTURE (RNAV)

SL-84 (FAA)
 CLEVELAND-HOPKINS INTL (CLE)
 CLEVELAND, OHIO

AMRST THREE DEPARTURE
(AMRST3.AMRST) 11013

(AMRST3.AMRST) 11013
AMRST THREE DEPARTURE

SL-84 (FAA)

CLEVELAND-HOPKINS INTL (CLE)
CLEVELAND, OHIO

ATIS DEP
132.375
CLEVELAND DEP CON
128.25 346.325

DEPARTURE ROUTE DESCRIPTION

TAKE-OFF RUNWAYS 6L, 6R, 10, 24L, 24R, 28: Climb via assigned heading to 5000 thence

. . . . or assigned altitude for vectors to intercept DJB VOR/DME R-265, to AMRST INT then via (Transition). Expect filed altitude/flight level ten (10) minutes after departure.

CARLETON TRANSITION (AMRST3.CRL): From over AMRST INT via CRL R-159 to CRL VORTAC.

WATERVILLE TRANSITION (AMRST3.VWV): From over AMRST INT via VWV R-115 to VWV VOR/DME.

TAKE-OFF OBSTACLES:

- Rwy 6R: Antenna 1056' from DER, 82' left of centerline, 45' AGL/820' MSL.
- Rwy 10: Trees, pole and tower beginning 1159' from DER, 656' right of centerline, up to 137' AGL/922' MSL. Signs beginning 1236' from DER, 717' left of centerline, up to 86' AGL/857' MSL.
- Rwy 24L: Trees and poles beginning 1903' from DER, 5' left of centerline, up to 89' AGL/849' MSL.
- Rwy 24R: Trees beginning 3652' from DER, 856' left of centerline, up to 100' AGL/870' MSL. Tower 2564' from DER, 1027' right of centerline, 191' AGL/870' MSL.
- Rwy 28: Trees, antenna and road beginning 3' from DER, 304' left of centerline, up to 94' AGL/820' MSL. Tree 712' from DER, 117' right of centerline, 135' AGL/811' MSL.

TAKE-OFF MINIMUMS:

Rwys 6L, 6R, 10, 24L, 24R, 28: Standard.

CARLETON
115.7 CRL
Chan 104
N42°02.88'-W83°27.46'

L-28, H-10



R-159

WATERVILLE
113.1 VWV
Chan 78
N41°27.09'
W83°38.32'

L-28, H-10



R-115

SANDUSKY
109.2 SKY
Chan 29



R-142

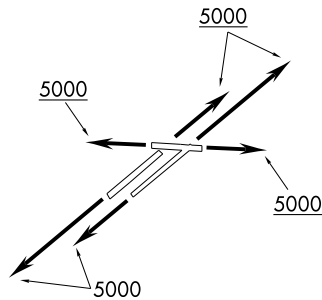
DRYER
113.6 DJB
Chan 83
N41°21.48'
W82°09.72'



R-265

AMRST
N41°14.70'
W82°59.33'

HUDDZ
N41°18.68'
W82°30.59'



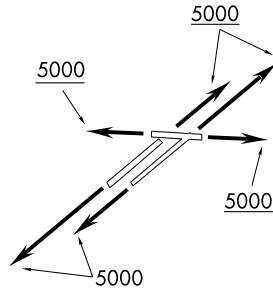
NOTE: RADAR Required.
NOTE: Chart not to scale.

CLEVELAND, OHIO
CLEVELAND-HOPKINS INTL (CLE)

ATIS DEP 132.375
CLEVELAND DEP CON
128.25 346.325



TAKE-OFF MINIMUMS:
Rwys 6L, 6R, 10, 24L,
24R, 28: Standard



OBRLN THREE DEPARTURE
(OBRLN3.OBRLN) 11013

(OBRLN3.OBRLN) 11013
OBRLN THREE DEPARTURE

SI-84 (FAA)

CLEVELAND-HOPKINS INTL (CLE)
CLEVELAND, OHIO

CLEVELAND, OHIO
CLEVELAND-HOPKINS INTL (CLE)

FORT WAYNE
117.8 FWA
Chan 125
N40°58.74'
W85°11.28'

L-27, H-5-10

FLAG CITY
108.2 FBC
Chan 19
N40°57.32'
W83°45.36'

BRUNZ
N41°12.60'
W82°30.02'
3500

OBRLN
N41°06.39'
W82°44.09'

DRYER
113.6 DJB
Chan 83
N41°21.48'
W82°09.72'

MANSFIELD
108.8 MFD
Chan 25

ROSEWOOD
117.5 ROD
Chan 122
N40°17.27'
W84°02.59'

RICHMOND
110.6 RID
Chan 43
N39°45.30'
W84°50.33'

BRICKYARD
116.3 VHP
Chan 110
N39°48.88'
W86°22.05'

MUNCIE
114.4 MIE
Chan 91
N40°14.24'
W85°23.64'

3500
*2900
244°
(52)

R-059

3500
*2400
217°
(87)

R-037

3500
*2500
243°
(86)

R-063

3500
*2300
274°
(65)

R-091

3500
*2400
261°
(47)

R-081

6000
*2700
235°
(77)

R-085

30

(12)

R-014

R-338

245°
(18)

(NARRATIVE ON FOLLOWING PAGE)

NOTE: RADAR required
NOTE: Chart not to scale.

OBRLN THREE DEPARTURE



DEPARTURE ROUTE DESCRIPTION

TAKE-OFF RUNWAYS 6L, 6R, 10, 24L, 24R, 28: Climb via assigned heading to 5000 thence

. . . . or assigned altitude for vectors to intercept DJB VOR/DME R-245, cross BRUNZ INT at or above 3500 then proceed to OBRLN INT then via (transition). Expect filed altitude/flight level ten (10) minutes after departure.

BRICKYARD TRANSITION (OBRLN3.VHP): From over OBRLN INT via FBC R-081 to FBC VORTAC, then via FBC R-243 and MIE R-063 to MIE VOR/DME, then via MIE R-244 and VHP R-059 to VHP VORTAC.

FORT WAYNE TRANSITION (OBRLN3.FWA): (For use by Fort Wayne arrivals only and ATC use as assigned.) From over OBRLN INT via FBC R-081 to FBC VORTAC, then via FBC R-274 and FWA R-091 to FWA VORTAC.

MUNCIE TRANSITION (OBRLN3.MIE): (For use by Indianapolis arrivals only and ATC use as assigned). From over OBRLN INT via FBC R-081 to FBC VORTAC, then via FBC R-243 and MIE R-063 to MIE VOR/DME.

RICHMOND TRANSITION (OBRLN3.RID): From over OBRLN INT via FBC R-081 to FBC VORTAC, then via FBC R-217 and RID R-037 to RID VORTAC.

ROSEWOOD TRANSITION (OBRLN3.ROD): (For use at or below FL220 only and ATC use as assigned). From over OBRLN INT via ROD R-055 to ROD VORTAC.

TAKE-OFF OBSTACLES:

Rwy 6R: Antenna 1056' from DER, 82' left of centerline, 45' AGL/820' MSL.

Rwy 10: Trees, pole and tower beginning 1159' from DER, 656' right of centerline, up to 137' AGL/922' MSL.

Signs beginning 1236' from DER, 717' left of centerline, up to 86' AGL/857' MSL.

Rwy 24R: Trees beginning 3652' from DER, 856' left of centerline, up to 100' AGL/870' MSL. Tower 2564' from DER, 1027' right of centerline, 191' AGL/870' MSL.

Rwy 24L: Trees and poles beginning 1903' from DER, 5' left of centerline, up to 89' AGL/849' MSL.

Rwy 28: Trees, antenna and road beginning 3' from DER, 304' left of centerline, up to 94' AGL/820' MSL.

Tree 712' from DER, 117' right of centerline, 135' AGL/811' MSL.

EC-2, 31 MAY 2012 to 28 JUN 2012

EC-2, 31 MAY 2012 to 28 JUN 2012

SANDUSKY THREE DEPARTURE
(SKY3.SKY) 11125

CLEVELAND, OHIO
CLEVELAND-HOPKINS INTL (CLE)
SL-84 (FAA)



DEPARTURE ROUTE DESCRIPTION

TAKE-OFF RUNWAYS 6L, 6R, 10, 24L, 24R, 28: Climb via assigned heading to 5000, thence

. . . . or assigned altitude for vectors to intercept DJB VOR/DME R-287 to SKY VOR/DME. Expect filed altitude/flight level ten (10) minutes after departure.

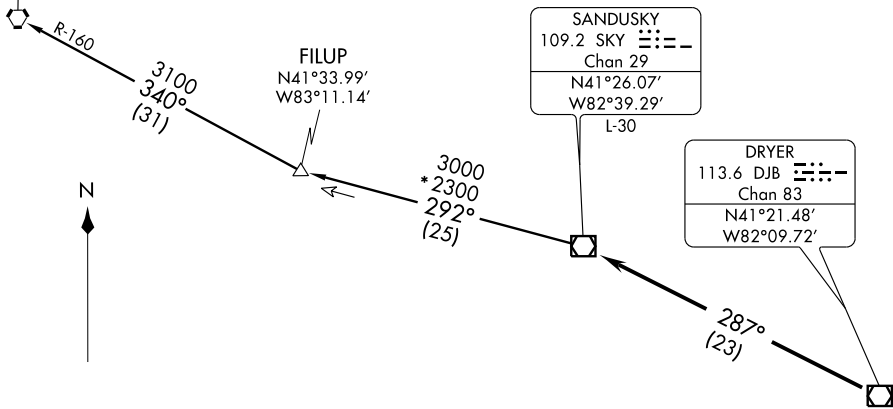
CARLETON TRANSITION (SKY3.CRL): From over SKY VOR/DME via SKY R-292 to FILUP INT, then via CRL R-160 to CRL VORTAC.

ATIS DEP 132.375
CLEVELAND DEP CON
128.25 346.325

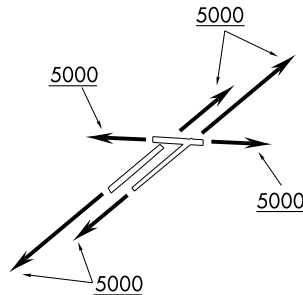
(SKY3.SKY) 11125
SANDUSKY THREE DEPARTURE

CLEVELAND-HOPKINS INTL (CLE)
CLEVELAND, OHIO

CARLETON 115.7 CRL Chan 104 N42°02.88' W83°27.46' L-28, H-10



TAKE-OFF MINIMUMS:
Rwys 6L, 6R, 10, 24L, 24R, 28: Standard.



TAKE-OFF OBSTACLES:

- Rwy 6R: Antenna 1056' from DER, 82' left of centerline, 45' AGL/820' MSL.
- Rwy 10: Trees, pole and tower beginning 1159' from DER, 656' right of centerline, up to 137' AGL/922' MSL. Signs beginning 1236' from DER, 717' left of centerline, up to 86' AGL/857' MSL.
- Rwy 24L: Trees and poles beginning 1903' from DER, 5' left of centerline, up to 89' AGL/849' MSL.
- Rwy 24R: Trees beginning 3652' from DER, 856' left of centerline, up to 100' AGL/870' MSL. Tower 2564' from DER, 1027' right of centerline, 191' AGL/870' MSL.
- Rwy 28: Trees, antenna and road beginning 3' from DER, 304' left of centerline, up to 94' AGL/820' MSL. Tree 712' from DER, 117' right of centerline, 135' AGL/811' MSL.

NOTE: RADAR Required.
NOTE: Turboprop aircraft only.
NOTE: Chart not to scale.