

LOC/DME I-CHO <b>111.7</b> Chan 54	APP CRS <b>028°</b>	Rwy Ldg <b>6001</b> THRE <b>639</b> Apt Elev <b>639</b>
--	------------------------	--

# ILS or LOC RWY 3

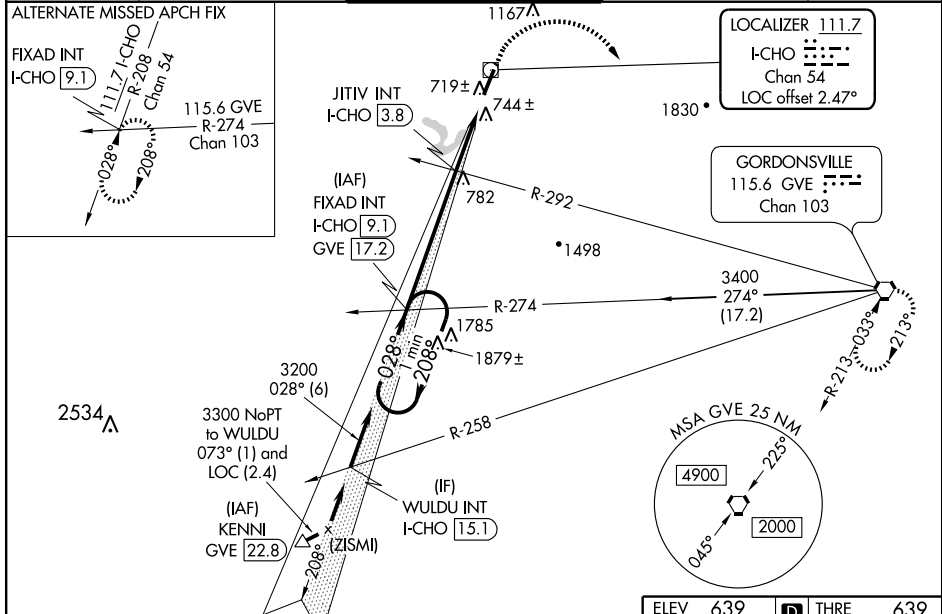
CHARLOTTESVILLE-ALBEMARLE (CHO)

**⚠** When local altimeter setting not received, use Orange altimeter setting and increase S-ILS 3 DA to 961, and all MDA 80 feet; increase S-ILS 3 all Cats visibility 1/8 mile and JITIV fix minimums Circling Cat D visibility 1/4 mile. For inoperative MALSR when using Orange altimeter setting, increase S-ILS 3 all Cats and JITIV fix minimums S-LOC 3 Cats C and D visibility to 1 mile. VDP NA when using Orange altimeter setting.



**MISSED APPROACH:** Climb to 2000 then climbing right turn to 4000 direct GVE VORTAC and hold.

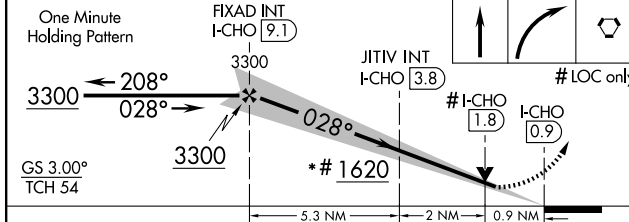
ATIS <b>118.425</b>	POTOMAC APP CON <b>132.85 323.125</b>	<b>CHARLOTTESVILLE TOWER ★</b> <b>124.5 (CTAF) 0 338.275</b>	GND CON <b>121.9 338.275</b>	UNICOM <b>122.95</b>
------------------------	--	---	---------------------------------	-------------------------



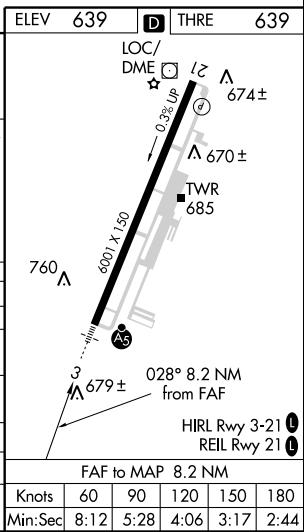
NE-3, 31 MAY 2012 to 28 JUN 2012

NE-3, 31 MAY 2012 to 28 JUN 2012

\*1700 when using Orange altimeter setting. One Minute Holding Pattern



CATEGORY	A	B	C	D
S-ILS 3		889-1/2	250 (300-1/2)	
S-LOC 3	1620-3/4 981 (1000-3/4)	1620-1 981 (1000-1)	1620-2 1/2	981 (1000-2 1/2)
CIRCLING	1620-1 1/4 981 (1000-1 1/4)	1620-1 1/2 981 (1000-1 1/2)	1620-3	981 (1000-3)
JITIV FIX MINIMUMS (DUAL VOR RECEIVERS OR DME REQUIRED)				
S-LOC 3	980-1/2	341 (400-1/2)	980-3/4	341 (400-3/4)
CIRCLING	1100-1	461 (500-1)	1100-1 1/2 461 (500-1 1/2)	1400-2 1/2 761 (800-2 1/2)



Knots	60	90	120	150	180
Min:Sec	8:12	5:28	4:06	3:17	2:44

# RNAV (GPS) RWY 3

CHARLOTTESVILLE-ALBEMARLE (CHO)

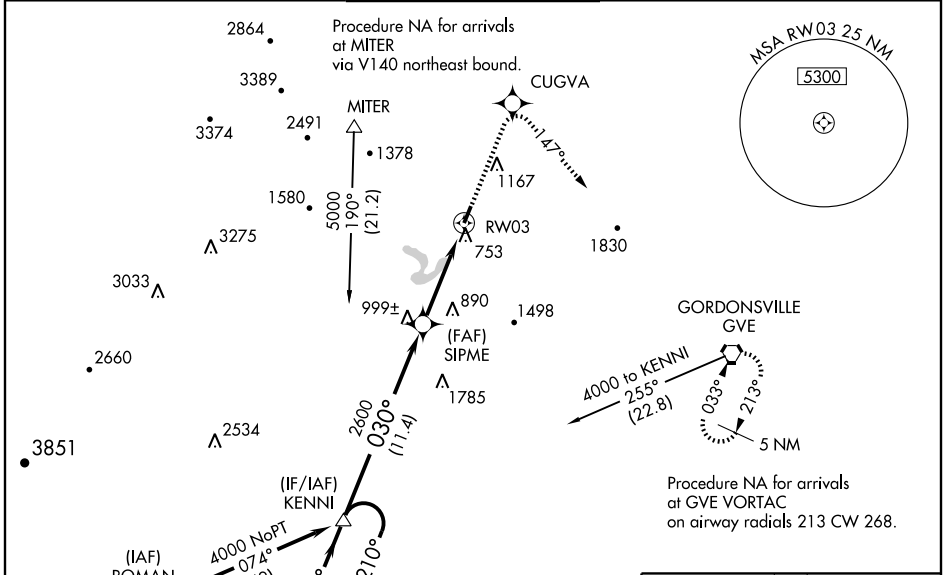
WAAS CH <b>61105</b> <b>W03A</b>	APP CRS <b>030°</b>	Rwy Idg <b>6001</b> TDZE <b>639</b> Apt Elev <b>639</b>
--	------------------------	---

**⚠** If local altimeter setting not received, use Staunton-Waynesboro-Harrisonburg altimeter setting and increase all DAs/MDAs 140 feet.  
**⚠** VDP NA when using Staunton-Waynesboro-Harrisonburg altimeter setting. Baro-VNAV NA when using Staunton-Waynesboro-Harrisonburg altimeter setting. For uncompensated Baro-VNAV systems, LNAV/VNAV NA below -1.6°C (4°F) or above 47°C (116°F). For inoperative MALSR, increase LPV visibility to 1 mile all Cats. DME/DME RNP-0.3 NA.

**MALSR**

**MISSED APPROACH:**  
Climb to 4000 direct CUGVA and right turn via 147° track to GVE VORTAC and hold.

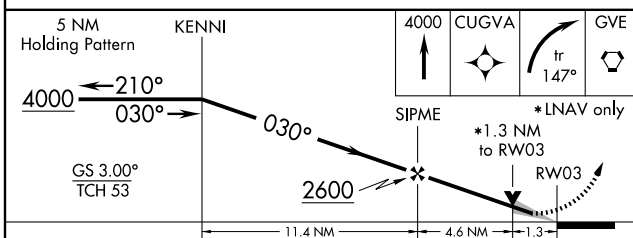
ATIS <b>118.425</b>	POTOMAC APP CON <b>132.85 323.125</b>	<b>CHARLOTTESVILLE TOWER ★</b> <b>124.5 (CTAF) 0 338.275</b>	GND CON <b>121.9 338.275</b>	UNICOM <b>122.95</b>
------------------------	--	---	---------------------------------	-------------------------



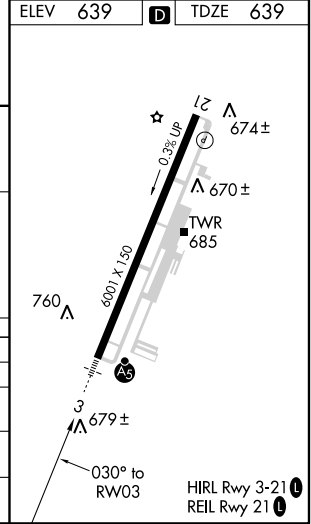
NE-3, 31 MAY 2012 to 28 JUN 2012

NE-3, 31 MAY 2012 to 28 JUN 2012

ELEV 639	<b>D</b>	TDZE 639
----------	----------	----------



CATEGORY	A	B	C	D
LPV DA	903-1/2 264 (300-1/2)			
LNAV/VNAV DA	1100-1 461 (500-1)			
LNAV MDA	1120-1/2 481 (500-1/2)	1120-3/4 481 (500-3/4)	1120-1 481 (500-1)	1120-1 481 (500-1)
CIRCLING	1160-1 521 (600-1)	1160-1 1/2 521 (600-1 1/2)	1560-3 921 (1000-3)	1560-3 921 (1000-3)



# RNAV (GPS) Y RWY 21

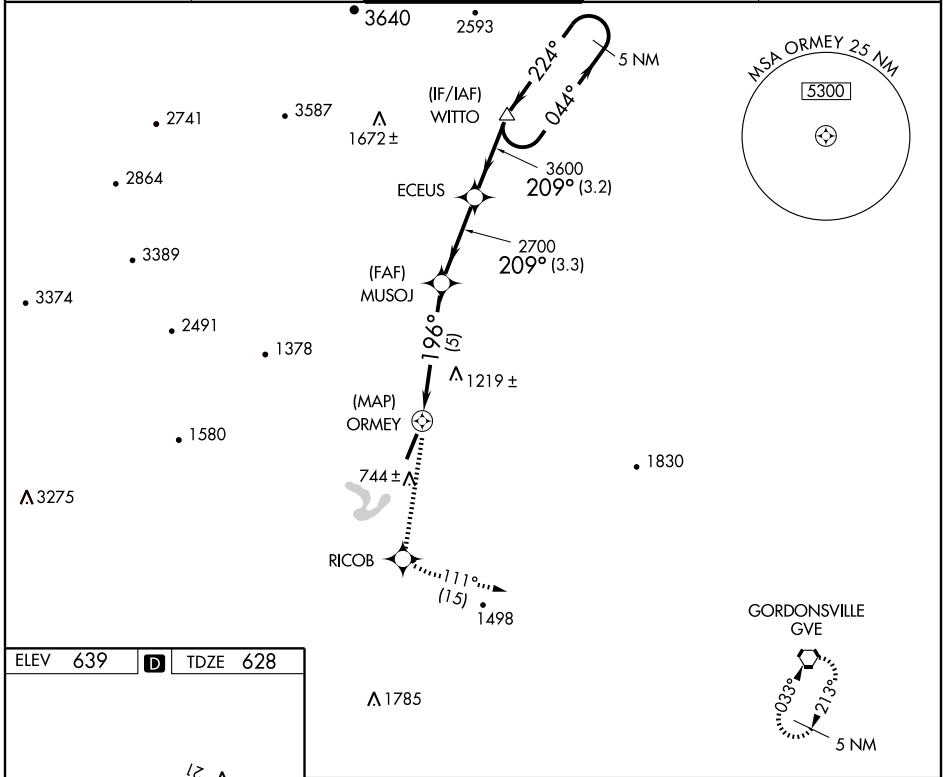
CHARLOTTESVILLE-ALBEMARLE (CHO)

APP CRS	Rwy Idg	<b>6001</b>
<b>196°</b>	TDZE	<b>628</b>
	Apt Elev	<b>639</b>

**▽** DME/DME RNP-0.3 NA.  
**▲** If local altimeter setting not received, use Staunton/Waynesboro/Harrisonburg altimeter setting and increase all MDAs 140 feet.

**MISSED APPROACH:** Climb to 4000 direct RICOB and via 111° track to GVE VORTAC and hold.

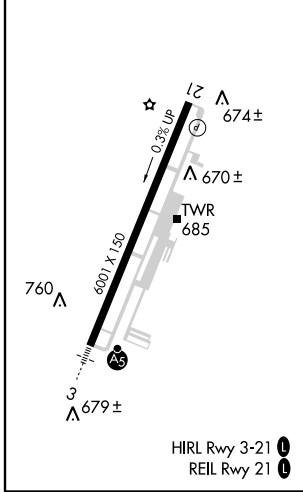
ATIS <b>118.425</b>	POTOMAC APP CON <b>132.85 323.125</b>	CHARLOTTESVILLE TOWER* <b>124.5 (CTAF) 0 338.275</b>	GND CON <b>121.9 338.275</b>	UNICOM <b>122.95</b>
------------------------	--	---	---------------------------------	-------------------------



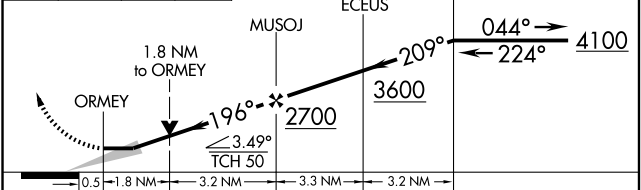
NE-3, 31 MAY 2012 to 28 JUN 2012

NE-3, 31 MAY 2012 to 28 JUN 2012

ELEV	<b>639</b>	<b>D</b>	TDZE	<b>628</b>
------	------------	----------	------	------------



4000	RICOB	tr 111°	GVE	VGSI and descent angles not coincident (VGSI Angle 3.00/TCH 25).	5 NM Holding Pattern
------	-------	---------	-----	--	----------------------



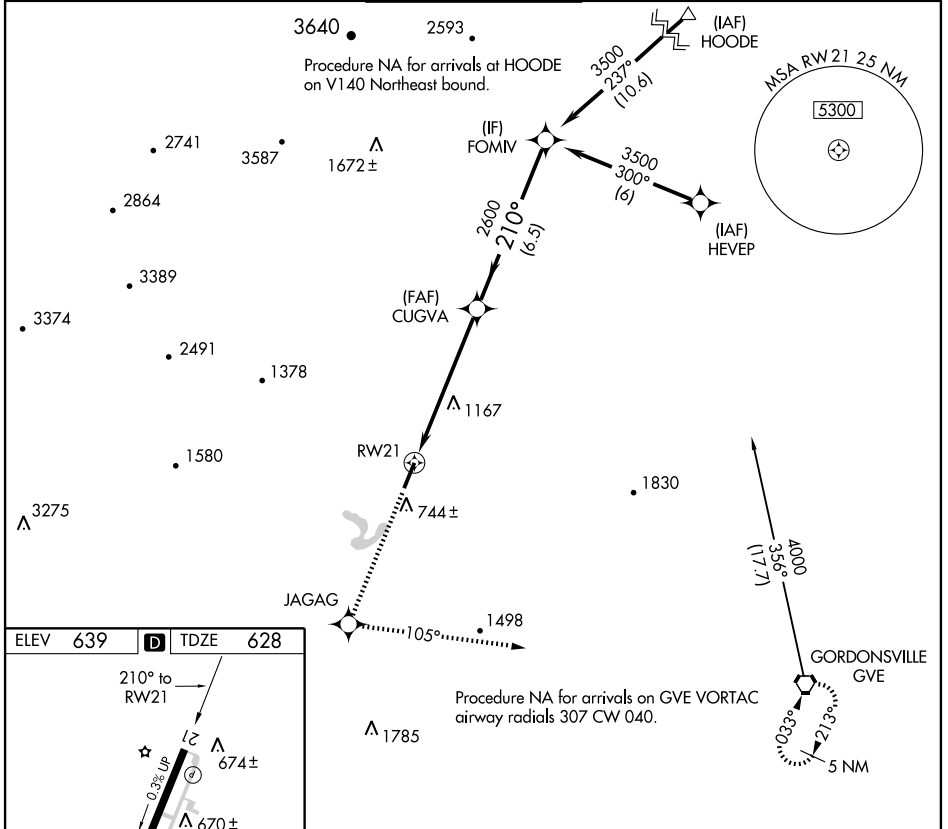
CATEGORY	A	B	C	D
LNAV MDA	1380-1 752 (800-1)	1380-1¼ 752 (800-1¼)	1380-2¼ 752 (800-2¼)	1380-2½ 752 (800-2½)
CIRCLING	1380-1 741 (800-1)	1380-1¼ 741 (800-1¼)	1380-2¼ 741 (800-2¼)	1560-3 921 (1000-3)

WAAS CH <b>45602</b> <b>W21A</b>	APP CRS <b>210°</b>	Rwy ldg TDZE Apt Elev	<b>6001</b> <b>628</b> <b>639</b>
--	------------------------	-----------------------------	---

# RNAV (GPS) Z RWY 21

CHARLOTTESVILLE-ALBEMARLE (CHO)

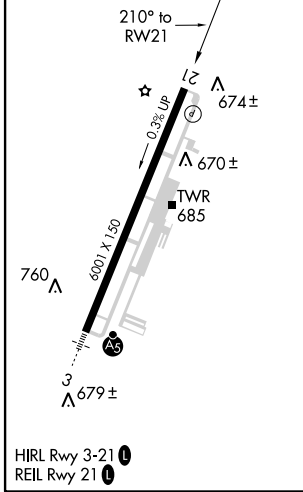
<p><b>▼</b> DME/DME RNP-0.3 NA. When local altimeter setting not received, use Staunton/Waynesboro/Harrisonburg altimeter setting and increase DA 140 feet and increase LPV visibility ½ mile all Cats.</p> <p><b>▲</b></p>		<p>MISSED APPROACH: Climb to 4000 direct JAGAG and left turn via track 105° to GVE VORTAC and hold.</p>	
ATIS <b>118.425</b>	POTOMAC APP CON <b>132.85 323.125</b>	CHARLOTTESVILLE TOWER ★ <b>124.5 (CTAF) 0 338.275</b>	GND CON <b>121.9 338.275</b>
		UNICOM <b>122.95</b>	



NE-3, 31 MAY 2012 to 28 JUN 2012

NE-3, 31 MAY 2012 to 28 JUN 2012

ELEV 639	<b>D</b>	TDZE 628
----------	----------	----------



4000	JAGAG	tr 105°	GVE	Procedure Turn NA
CUGVA 2600		RWY 21		FOMIV 3500
6 NM		6.5 NM		GS 3.00° TCH 50
CATEGORY	A	B	C	D
LPV DA	878-1 250 (300-1)			