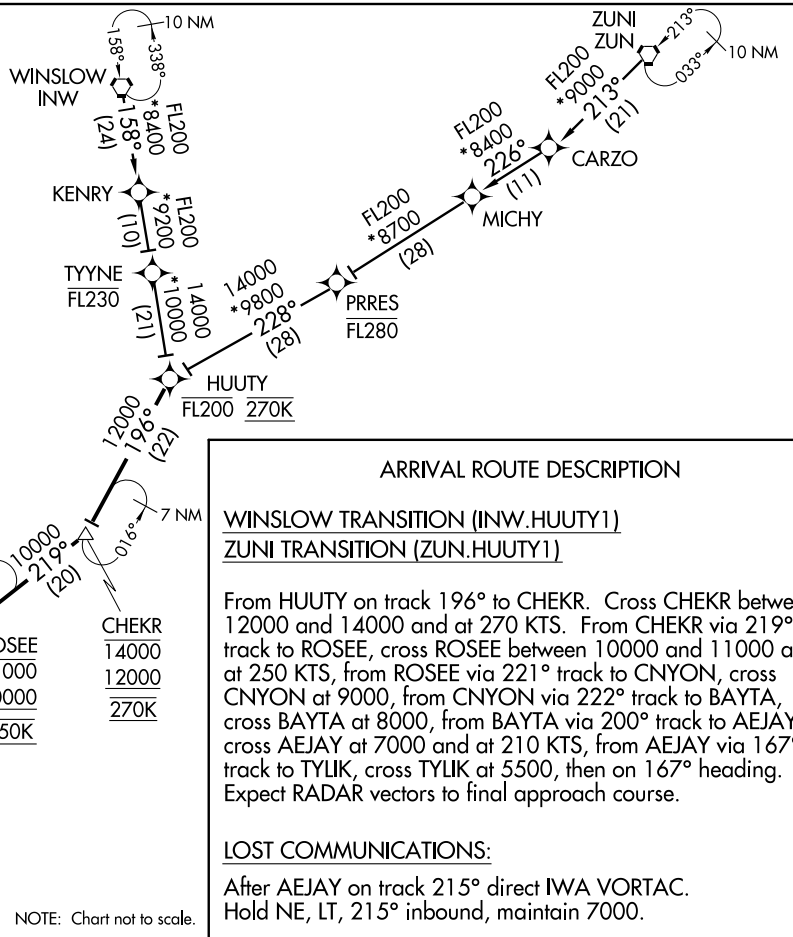


PHOENIX, ARIZONA
 HUUTY ONE ARRIVAL (RNAV)
 (HUUTY, HUUTY1) 1215Z

PHOENIX APP CON
 124.9 353.8
 PHOENIX-MESA GATEWAY TOWER *
 120.6 289.4 (WEST)
 124.75 379.225 (EAST)
 PHOENIX-MESA GATEWAY GND CON
 128.25 275.8
 PHOENIX-MESA GATEWAY ATIS
 133.5 270.275
 FALCON FIELD ATIS
 118.25
 CHANDLER MUNI ATIS
 128.325



NOTE: Turbojet aircraft only.
 NOTE: GPS required.
 NOTE: RADAR required.
 NOTE: RNAV 1.



ARRIVAL ROUTE DESCRIPTION

WINSLOW TRANSITION (INW.HUUTY1)

ZUNI TRANSITION (ZUN.HUUTY1)

From HUUTY on track 196° to CHEKR. Cross CHEKR between 12000 and 14000 and at 270 KTS. From CHEKR via 219° track to ROSEE, cross ROSEE between 10000 and 11000 and at 250 KTS, from ROSEE via 221° track to CNYON, cross CNYON at 9000, from CNYON via 222° track to BAYTA, cross BAYTA at 8000, from BAYTA via 200° track to AEJAY, cross AEJAY at 7000 and at 210 KTS, from AEJAY via 167° track to TYLIK, cross TYLIK at 5500, then on 167° heading. Expect RADAR vectors to final approach course.

LOST COMMUNICATIONS:

After AEJAY on track 215° direct IWA VORTAC. Hold NE, LT, 215° inbound, maintain 7000.

NOTE: Chart not to scale.

PHOENIX, ARIZONA
 HUUTY ONE ARRIVAL (RNAV)
 (HUUTY, HUUTY1) 1215Z

SI-74 (FAA)

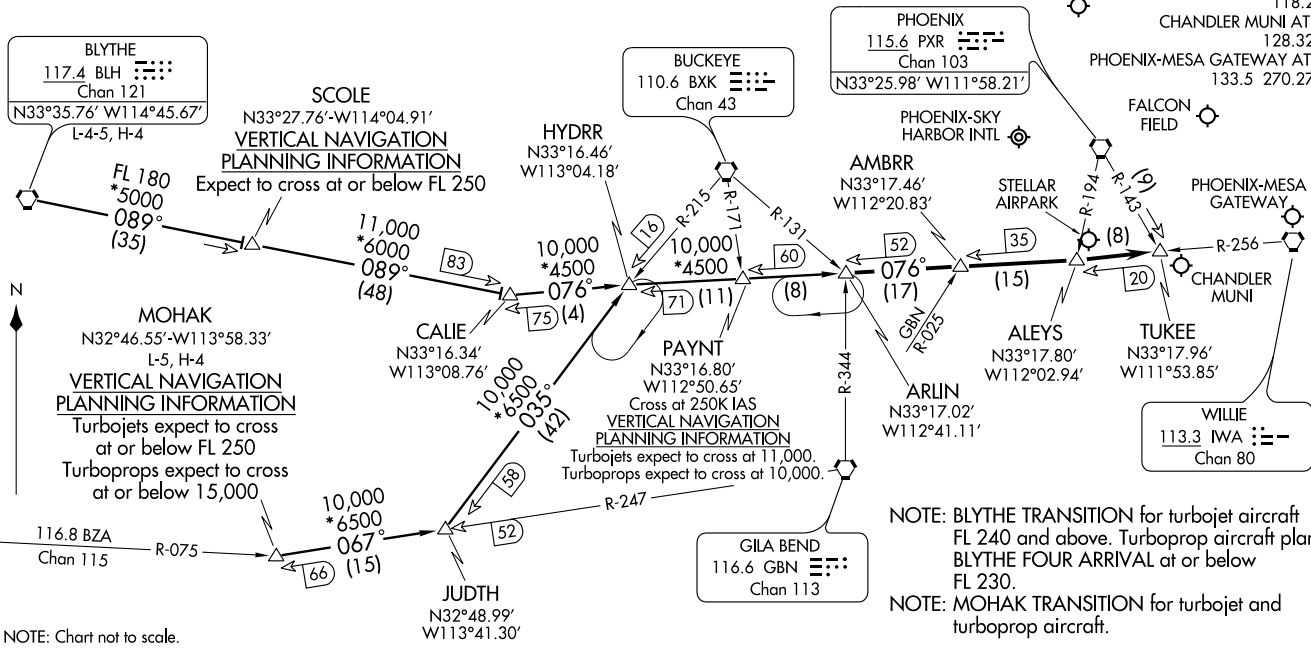
PHOENIX, ARIZONA

PHOENIX, ARIZONA

BLYTHE TRANSITION (BLH,ARLIN3): From over BLH VORTAC via BLH R-089 and IWA R-256 to ARLIN INT. Thence....
MOHAK TRANSITION (MOHAK,ARLIN3): From over MOHAK INT via GBN R-247 and BXK R-215 to HYDRR INT, then via IWA R-256 to ARLIN INT. Thence....
From over ARLIN INT:
PHOENIX SKY HARBOR INTL: Rwy 7L/R or 8: Expect vectors after ARLIN INT to final approach course; Rwy 25L/R or 26: via IWA R-256 to TUKEE INT. Expect vectors prior to TUKEE INT to final approach course.
SATELLITE AIRPORTS: Expect vectors after passing TUKEE INT.
LOST COMMUNICATIONS: After ARLIN INT, via IWA R-256 and PXR R-143 to PXR VORTAC.

- PHOENIX APP CON 124.1 256.9
- PHOENIX TOWER 118.7 278.8 (Rwy 8-26)
- 120.9 254.3 (Rwy 7L-25R, 7R-25L)
- PHOENIX GND CON 119.75 269.2
- PHOENIX SKY HARBOR ATIS 127.575
- PHOENIX DEER VALLEY ATIS 126.5
- SCOTTSDALE ATIS 118.6
- FALCON FIELD ATIS 118.25
- CHANDLER MUNI ATIS 128.325
- PHOENIX-MESA GATEWAY ATIS 133.5 270.275

PHOENIX-DEER VALLEY
SCOTTSDALE



NOTE: Chart not to scale.

BLYTHE FOUR ARRIVAL
(BLH:BLH4) 09127

BLYTHE TRANSITION (BLH.BLH4): From over BLH VORTAC via BLH R-082 to SALOM INT, then via GBN R-285 and IWA R-256 to ARLIN INT. Thence
From over ARLIN INT:

PHOENIX SKY HARBOR INTL: Rwy 7L/R or 8: Expect radar vectors after passing ARLIN INT to final approach course; Rwy 25L/R or 26: via IWA R-256 to TUKEE INT, expect radar vectors prior to TUKEE INT to final approach course.

ALL SATELLITE AIRPORTS: Expect radar vectors after passing TUKEE INT.

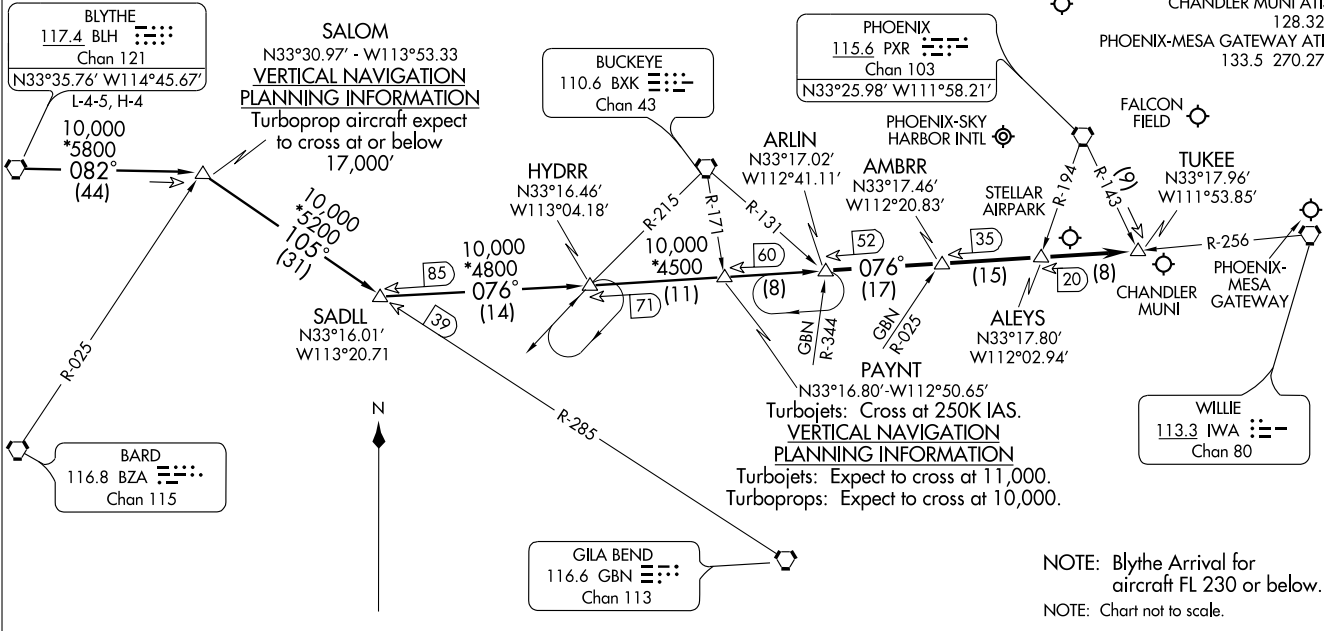
LOST COMMUNICATIONS: After ARLIN INT, via IWA R-256 and PXR R-143 to PXR VORTAC.

- PHOENIX APP CON 124.1 256.9
- PHOENIX TOWER 118.7 278.8 (Rwy 8-26)
- 120.9 254.3 (Rwy 7L-25R, 7R-25L)
- PHOENIX GND CON 119.75 269.2
- FALCON FIELD ATIS 118.25
- PHOENIX DEER VALLEY ATIS 126.5
- PHOENIX SKY HARBOR ATIS 127.575
- SCOTTSDALE ATIS 118.6
- CHANDLER MUNI ATIS 128.325
- PHOENIX-MESA GATEWAY ATIS 133.5 270.275

BLYTHE FOUR ARRIVAL
(BLH:BLH4) 09127

ST-322 (FAA)

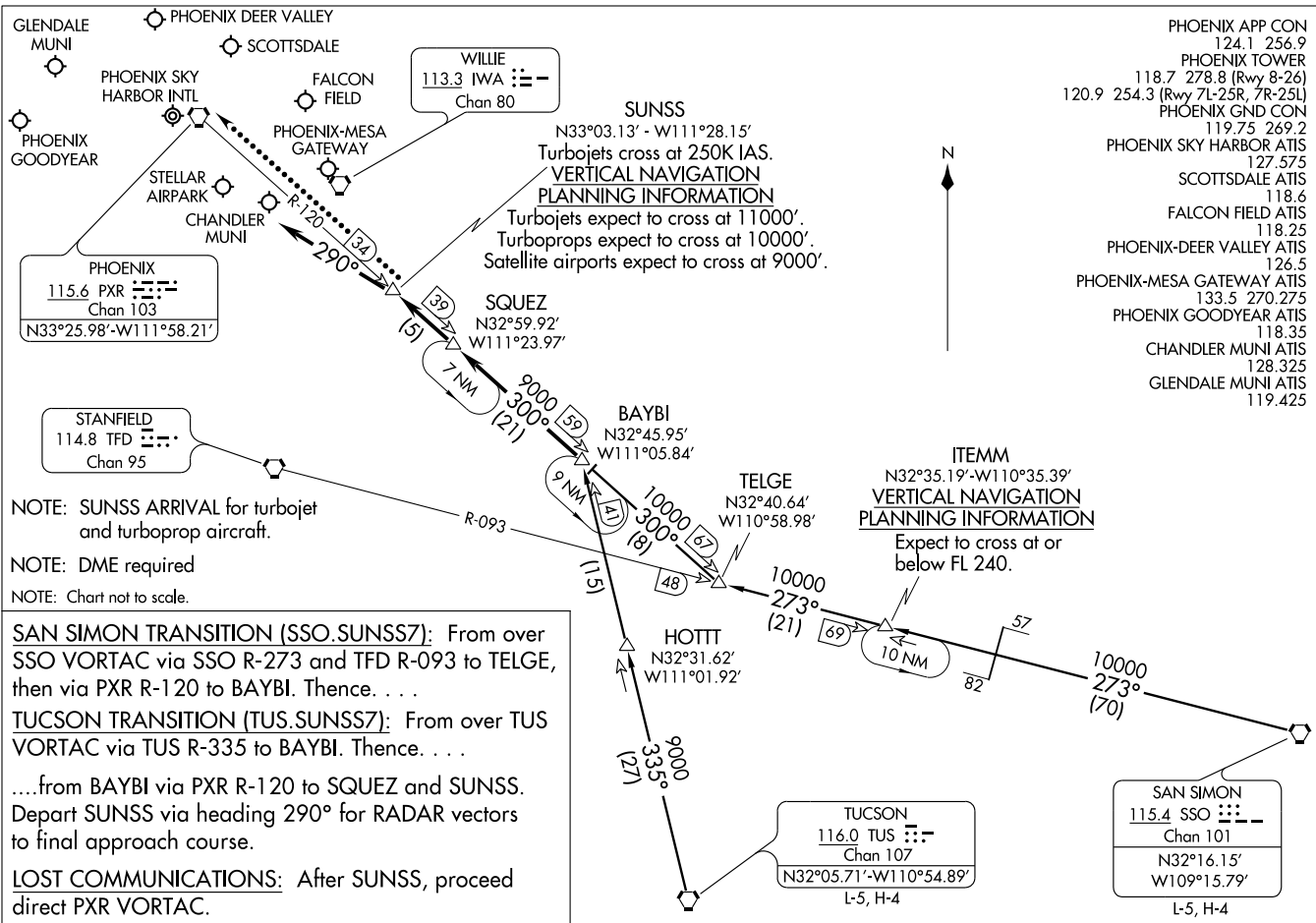
PHOENIX, ARIZONA



PHOENIX, ARIZONA

NOTE: Blythe Arrival for aircraft FL 230 or below.
 NOTE: Chart not to scale.

SUNSS SEVEN ARRIVAL
(SUNSS.SUNSS7) 11013



(SUNSS.SUNSS7) 11013
SUNSS SEVEN ARRIVAL

ST-322 (FAA)

PHOENIX, ARIZONA

NOTE: SUNSS ARRIVAL for turbopjet and turboprop aircraft.

NOTE: DME required

NOTE: Chart not to scale.

SAN SIMON TRANSITION (SSO.SUNSS7): From over SSO VORTAC via SSO R-273 and TFD R-093 to TELGE, then via PXR R-120 to BAYBI. Thence. . .

TUCSON TRANSITION (TUS.SUNSS7): From over TUS VORTAC via TUS R-335 to BAYBI. Thence. . .

....from BAYBI via PXR R-120 to SQUEZ and SUNSS. Depart SUNSS via heading 290° for RADAR vectors to final approach course.

LOST COMMUNICATIONS: After SUNSS, proceed direct PXR VORTAC.

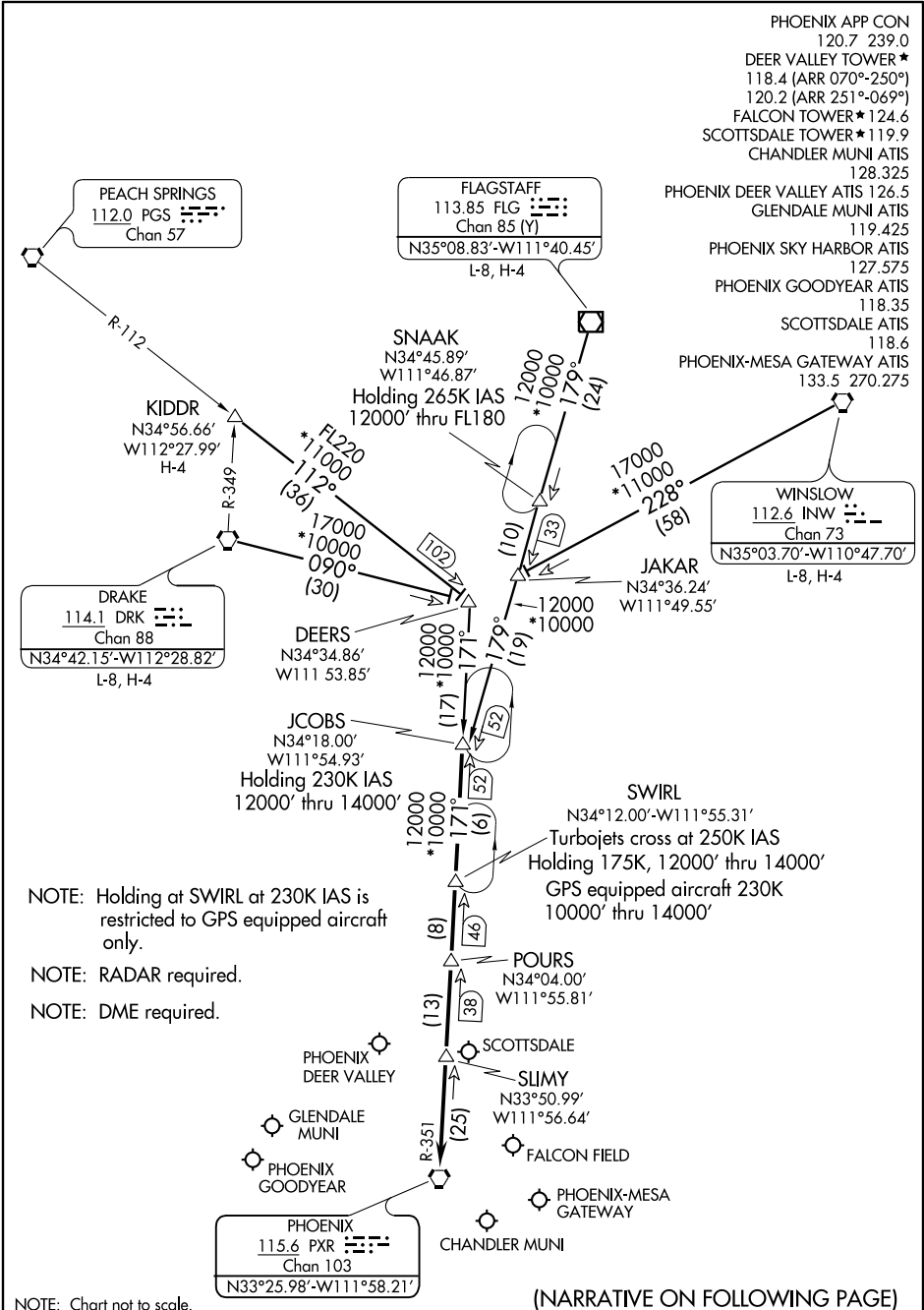
PHOENIX, ARIZONA

JCOBS TWO ARRIVAL

SCOTTSDALE, ARIZONA

SW-4, 31 MAY 2012 to 28 JUN 2012

SW-4, 31 MAY 2012 to 28 JUN 2012



JCOBS TWO ARRIVAL

SCOTTSDALE, ARIZONA

JCOBS TWO ARRIVAL

SCOTTSDALE, ARIZONA

ARRIVAL ROUTE DESCRIPTION

DRAKE TRANSITION (DRK.JCOBS2): From over DRK VORTAC via DRK R-090 to DEERS INT, then via PXR R-351 to JCOBS INT. Thence....

FLAGSTAFF TRANSITION (FLG.JCOBS2): From over FLG VOR/DME via FLG R-179 to JCOBS INT. Thence....

KIDDR TRANSITION (KIDDR.JCOBS2): From over KIDDR INT via PGS R-112 to DEERS INT then via PXR R-351 to JCOBS INT. Thence....

WINSLOW TRANSITION (INW.JCOBS2): From over INW VORTAC via INW R-228 to JAKAR INT, then via FLG R-179 to JCOBS INT. Thence....

... From over JCOBS INT via PXR R-351 to SWIRL DME, then via PXR R-351 to SLIMY DME, then direct PXR VORTAC. After POURS, expect radar vectors to final approach course.

LOST COMMUNICATIONS: From DRK VORTAC via DRK R-090 to intercept PXR R-351 at DEERS INT direct PXR VORTAC. From FLG VORTAC, proceed direct to JCOBS INT then direct PXR VORTAC. From KIDDR INT to DEERS INT via PGS R-112 to intercept PXR R-351 to PXR VORTAC. From INW VORTAC to JAKAR INT via INW R-228 to intercept FLG R-179 to JCOBS INT to intercept PXR R-351 to PXR VORTAC.

SW-4, 31 MAY 2012 to 28 JUN 2012

SW-4, 31 MAY 2012 to 28 JUN 2012