

COLLEGE PARK, MARYLAND

AL-6720 (FAA)

RNAV (GPS) RWY 15

COLLEGE PARK (CGS)

APP CRS 136°	Rwy Idg TDZE Apt Elev	2191 47 48
------------------------	-----------------------------	---------------------------------------

▼ When local altimeter setting not received, use Ronald Reagan Washington National altimeter setting.
▲ DME/DME RNP-0.3 NA.

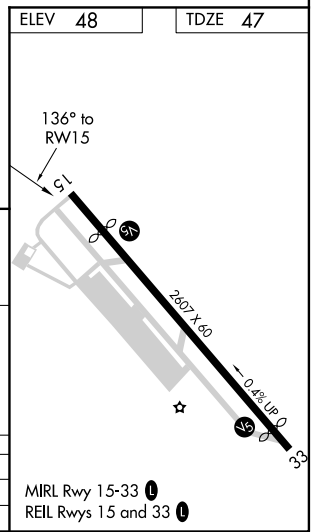
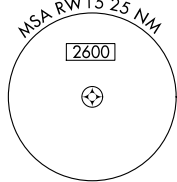
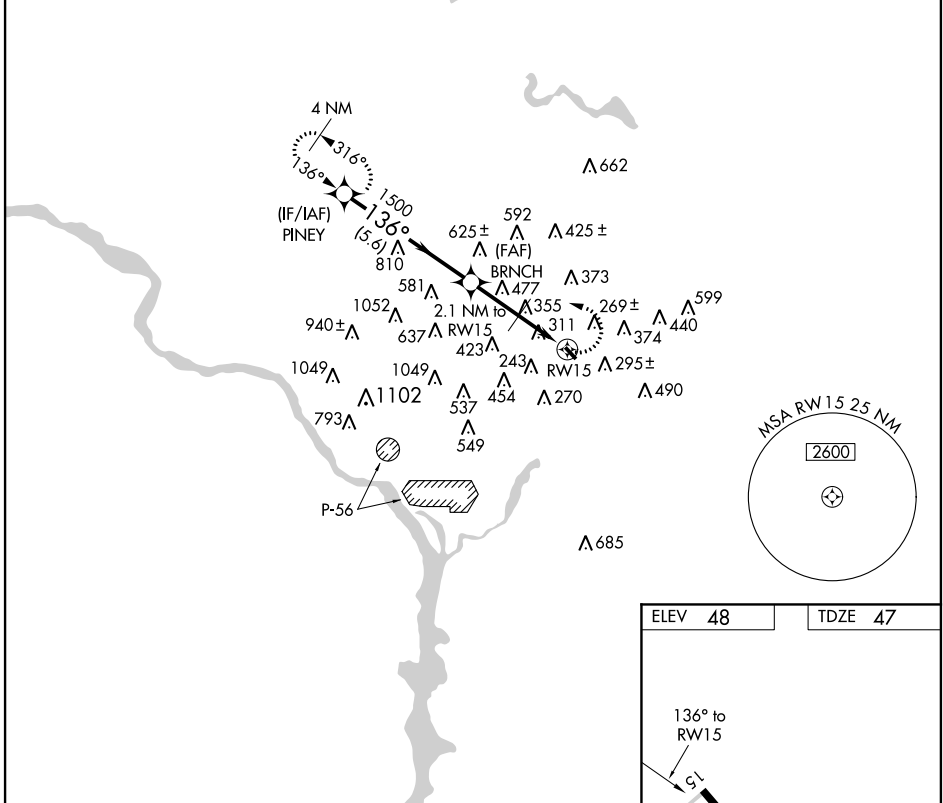
MISSED APPROACH: Climbing left turn to 2100 direct PINEY WP and hold.

AWOS-3
121.225

POTOMAC APP CON
119.85 319.1

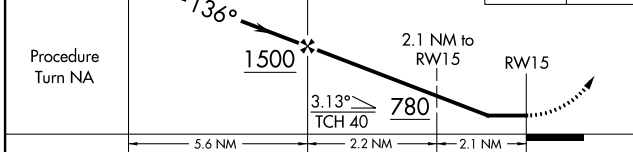
UNICOM
122.975 (CTAF) 0

RADAR REQUIRED



VGSI and descent angle not coincident (VGSI Angle 5.00/TCH 40).

Procedure Turn NA



CATEGORY	A	B	C	D
LNAV MDA	720-1	673 (700-1)		NA
CIRCLING	760-1	712 (800-1)		NA

COLLEGE PARK, MARYLAND
Orig-D 13346

38°59'N - 76°55'W

COLLEGE PARK (CGS) RNAV (GPS) RWY 15

NE-3, 05 MAR 2015 to 02 APR 2015

NE-3, 05 MAR 2015 to 02 APR 2015