


LOC/DME I-CGF 111.1 Chan 48	APP CRS 237°	Rwy Idg TDZE Apt Elev	5102 879 879
--	------------------------	-----------------------------	---

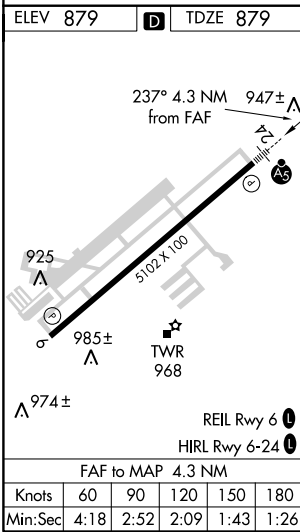
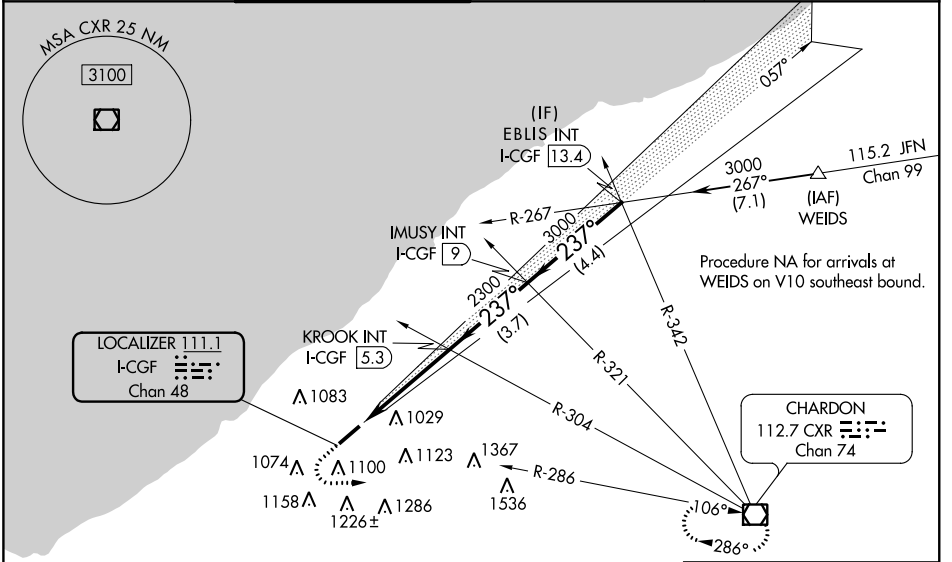
ILS or LOC RWY 24

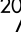

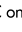


CUYAHOGA COUNTY (CGF)

⚠ Autopilot coupled approach NA below 2020. Visibility reduction by helicopters NA. VDP NA with Cleveland-Hopkins Int altimeter setting. When local altimeter setting not received, use Cleveland-Hopkins Int altimeter setting and increase all DA 57 feet and all MDA 60 feet, increase Circling Cat C ¼ mile. For inoperative MALSR increase S-LOC visibility all Cats to 1 mile. For inoperative MALSR when using Cleveland-Hopkins Int altimeter setting, increase S-ILS visibility all Cats to 1¼ mile, increase S-LOC Cat A, B visibility to 1 mile.

MALSR 
MISSED APPROACH: Climb to 1600 then climbing left turn to 3100 via CXR VOR/DME R-286 to CXR VOR/DME and hold.

CLEVELAND APP CON 125.35 354.025	COUNTY TOWER* 118.5 (CTAF) 	GND CON 121.85	CLNC DEL 121.85
--	--	--------------------------	---------------------------



ELEV 879	TDZE 879					
1600	3100	CXR R-286	CXR 	KROOK INT I-CGF 5.3	IMUSY INT I-CGF 9	EBLIS INT I-CGF 13.4
*LOC only.						
 I-CGF 1		 I-CGF 2		 I-CGF 3		
1 NM		3.3 NM		3.7 NM		
A		B		C		
S-ILS 24		1192-¾		313 (400-¾)		
S-LOC 24		1240-¾		361 (400-¾)		
Knots		60	90	120	150	180
Min:Sec		4:18	2:52	2:09	1:43	1:26
CIRCLING		1400-1 521 (600-1)	1420-1 541 (600-1)	1420-1½ 541 (600-1½)	1480-2 601 (700-2)	

EC-2. 17 AUG 2017 to 14 SEP 2017

EC-2. 17 AUG 2017 to 14 SEP 2017

WAAS CH 42528 W24A	APP CRS 238°	Rwy Idg 5102 TDZE 879 Apt Elev 879
--	------------------------	---

RNAV (GPS) RWY 24

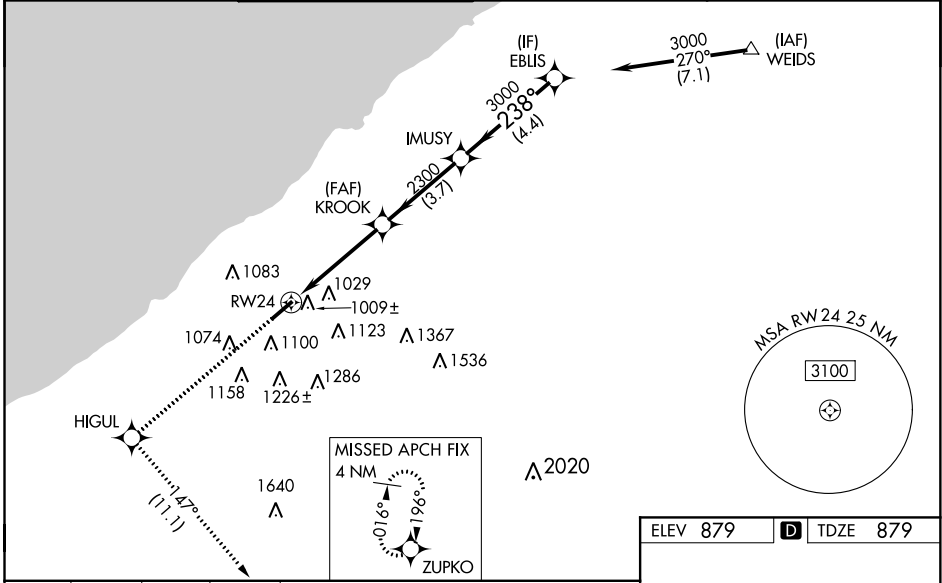
CUYAHOGA COUNTY (CGF)

⚠ Baro-VNAV NA when using Cleveland-Hopkins Intl altimeter setting. For uncompensated Baro-VNAV systems, LNAV/VNAV NA below -16°C (4°F) or above 38°C (100°F). DME/DME RNP-0.3 NA. Visibility reduction by helicopters NA. VDP NA with Cleveland-Hopkins Intl altimeter setting. When local altimeter setting not received, use Cleveland-Hopkins Intl altimeter setting and increase all DA 57 feet and all MDA 60 feet, increase LNAV visibility Cats C, D and Circling Cat C ½ mile. For inoperative MALS increase LNAV/VNAV visibility all Cats to 1 mile, LNAV Cat A, B visibility to 1 mile and Cat C, D to 1½ mile. For inoperative MALS when using Cleveland-Hopkins Intl altimeter setting, increase LPV visibility all Cats to 1¼ mile, LNAV/VNAV visibility all Cats to 1 mile, and LNAV Cat A, B visibility to 1 mile, Cat C, D visibility to 1½ mile.

MALS

MISSED APPROACH:
Climb to 3000 direct HIGUL and on track 147° to ZUPKO and hold.

CLEVELAND APP CON 125.35 354.025	COUNTY TOWER★ 118.5 (CTAF) 0	GND CON 121.85	CLNC DEL 121.85
--	--	--------------------------	---------------------------



EC-2: 17 AUG 2017 to 14 SEP 2017

EC-2: 17 AUG 2017 to 14 SEP 2017

3000	HIGUL	tr 147°	ZUPKO	*LNAV only	IMUSY	EBLIS
					3000	3000
	*1.1 NM to RW24				2300	238°
	-1.1	3.2 NM	3.7 NM	4.4 NM		
CATEGORY	A	B	C	D		
LPV DA		1192-¾	313 (400-¾)			
LNAV/VNAV DA		1190-¾	311 (400-¾)			
LNAV MDA		1280-¾	401 (500-¾)			
CIRCLING	1400-1 521 (600-1)	1420-1 541 (600-1)	1420-1½ 541 (600-1½)	1480-2 601 (700-2)		

ELEV 879 **D** TDZE 879

Key features:
 - RWY 24: 5102 X 100
 - Tower: 968 ft
 - 925 ft, 985± ft, 974± ft altitudes
 - GP 3.00° TCH 50
 - 238° to RW24, 947± ft
 - REIL Rwy 6, HIRL Rwy 6-24

WAAS CH 70628 W06A	APP CRS 057°	Rwy Idg TDZE 873 Apt Elev 879
--	------------------------	---

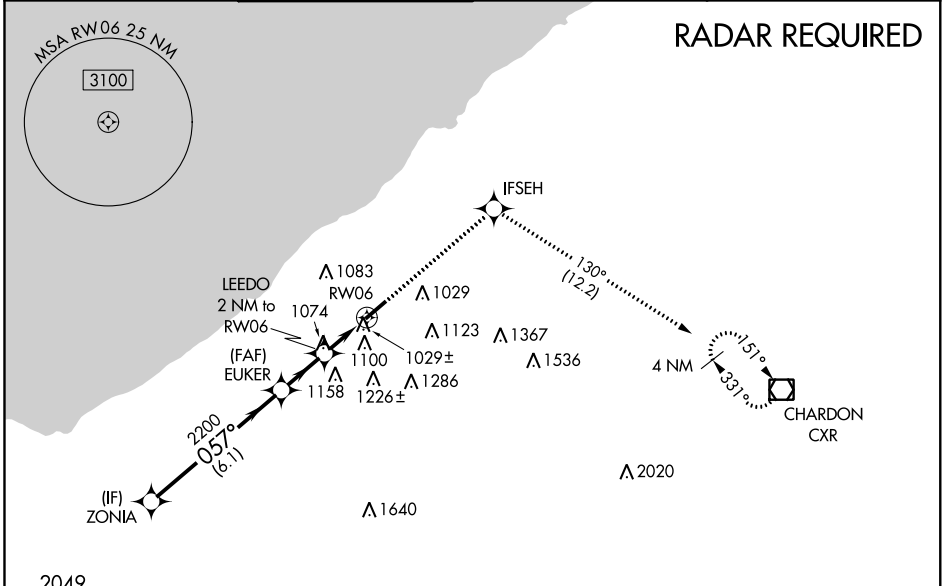
RNAV (GPS) RWY 6

CUYAHOGA COUNTY (CGF)

⚠ Baro-VNAV NA when using Cleveland-Hopkins Intl altimeter setting. For uncompensated Baro-VNAV systems, LNAV/VNAV NA below -16°C (4°F) or above 38°C (100°F). When VGSI inop, Straight-In/ Circling Rwy 06 procedure NA at night. DME/DME RNP-0.3 NA. Visibility reduction by helicopters NA. When local altimeter setting not received, use Cleveland-Hopkins Intl altimeter setting and increase all DA 57 feet and all MDA 60 feet, increase LPV visibility all Cats ¼ mile, LNAV/VNAV visibility all Cats ½ mile, LNAV Cat C, D visibility ¼ mile and Circling Cat C ¼ mile.

MISSED APPROACH:
Climb to 3100 direct IFSEH and on track 130° to CXR VOR/DME and hold.

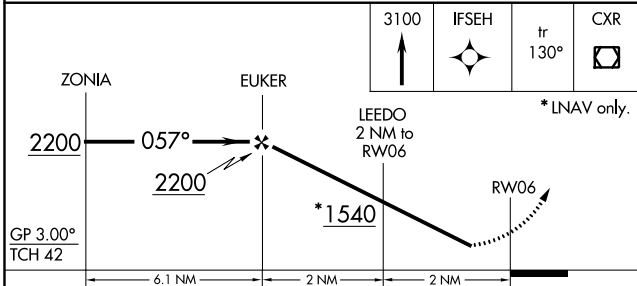
CLEVELAND APP CON 125.35 354.025	COUNTY TOWER* 118.5 (CTAF) 0	GND CON 121.85	CLNC DEL 121.85
--	--	--------------------------	---------------------------



EC-2, 17 AUG 2017 to 14 SEP 2017

EC-2, 17 AUG 2017 to 14 SEP 2017

ELEV 879	D TDZE 873
----------	-------------------



CATEGORY	A	B	C	D
LPV DA	1177-1 304 (300-1)			
LNAV/VNAV DA	1234-1¼ 361 (400-1¼)			
LNAV MDA	1380-1 507 (600-1)	1380-1⅜ 507 (600-1⅜)		
CIRCLING	1400-1 521 (600-1)	1420-1 541 (600-1)	1420-1½ 541 (600-1½)	1480-2 601 (700-2)

