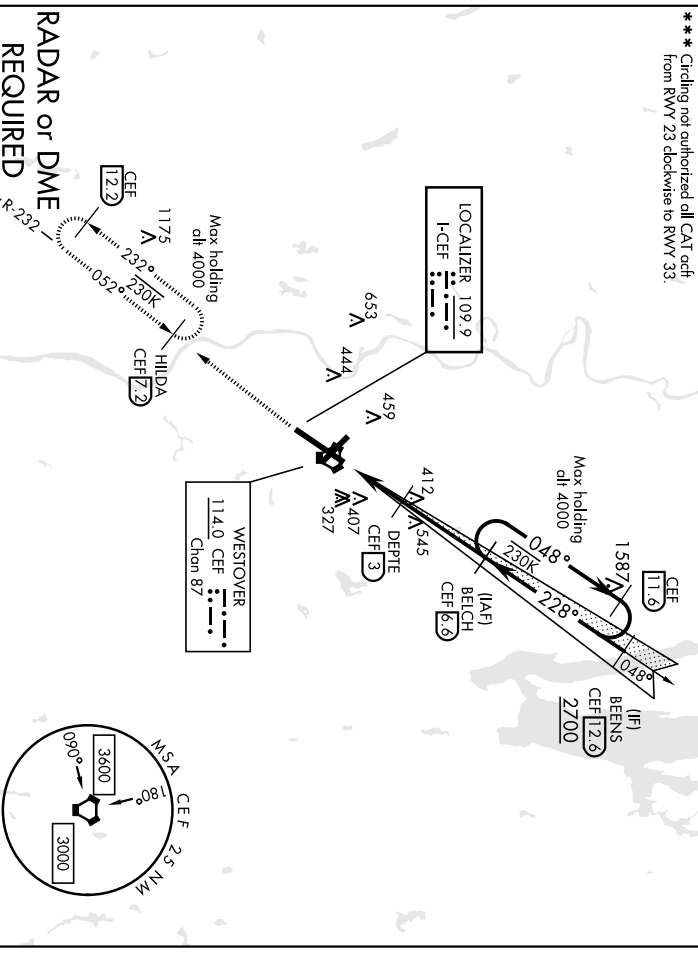


LOC I-CEF 109.9	APCH CRS 228°	Rwy Idg 241	TDZE 241	AL-447 [USAF]	WESTOVER ARB METROPOLITAN (KCEF)
*** When ALS inop, increase RVR to 40 and vis to 3/4 mile. ** When ALS inop, increase CAT AB RVR to 55 and vis to 1 mile. CAT CDE vis to 1 3/8 miles.		ATIS * 114.0 142.525		BRADLEY APP CON 125.35 281.5	WESTOVER TOWER * 134.85 (CTAF) 348.75
*** Circling not authorized all CAT adv from RWY 23 clockwise to RWY 33.		GND CON 118.35 275.8			



NE-1, 27 APR 2017 to 25 MAY 2017

NE-1, 27 APR 2017 to 25 MAY 2017

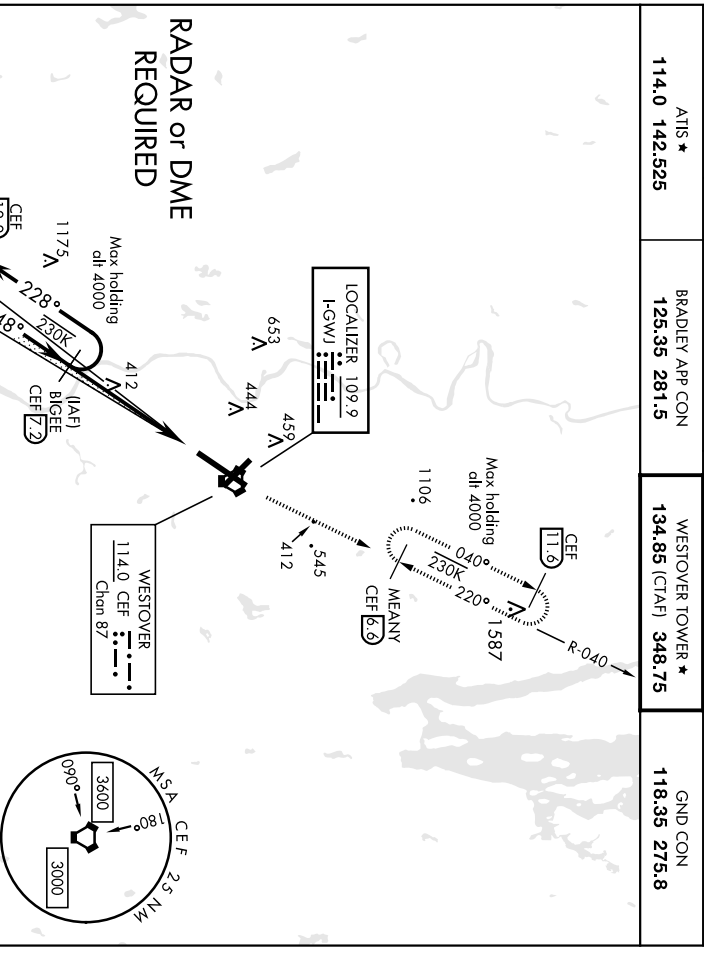
2500 CEF R-232	HILDA CEF Z2	TLOC ONLY	BELCH 6.9	EMERG SAFE ALT 100 NM 6400	ELEV 241	TDZE 241
VORTAC ZODER 18 DEPTE 3 1020 228° 2300 GS 3.00° TCH 46				2700	Rwy 5 Idg 10,396'	228° 6.2 NM from FAF
CATEGORY A B C D E						
S-ILS 23 * 441 / 24 200 [200-1/2]						
S-LOC 23 ** 760 / 24 519 (600-1/2) 760 / 55 519 (600-1)						
*** CIRCLING (600-1) 539 (600-1) 800-1 559 (600-1) 820-1 579 (600-1 1/2) 960-2 719 (800-2 1/2) 980-2 739 (800-2 1/2)						

NE-1, 27 APR 2017 to 25 MAY 2017

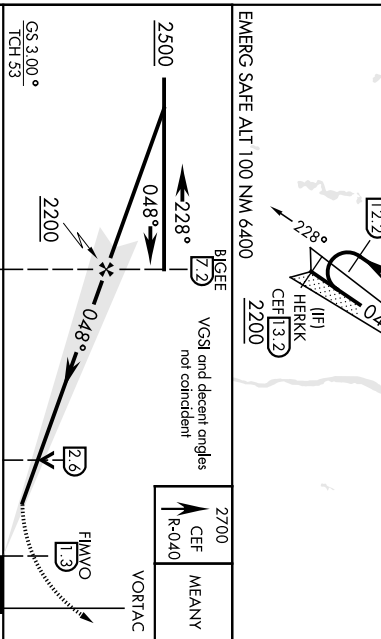
NE-1, 27 APR 2017 to 25 MAY 2017

SPRINGFIELD/CHICOPEE, MASSACHUSETTS 42°11'N 072°32'W WESTOVER ARB METROPOLITAN (KCEF)
Amdt 1 12NOV15 ILS or LOC RWY 23

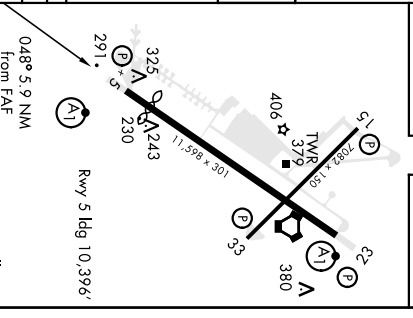
LOC I-GWJ 109.9	APCH CRS 048°	Rwy Idg 10,396 THRE 236 Appt Elev 241	AL-447 [USAF]	WESTOVER ARB METROPOLITAN (KCEF)
<p>▼ * When ALS inop, increase CAT AB RVR to 55 and vis to 1 mile. CAT CDE vis to 1 1/2 miles. ** Circling not authorized all CAT act from Rwy 23 clockwise to Rwy 33.</p>			AISF-1 	MISSED APPROACH: Climb to 2700 via CEF R-040 to MEANY and hold. Expect radar vectors. Expect climb in hold
<p>ATIS *</p> <p>114.0 142.525</p>		BRADLEY APP CON 125.35 281.5	WESTOVER TOWER *	134.85 (CTAF) 348.75
			GND CON	118.35 275.8



RADAR or DME REQUIRED



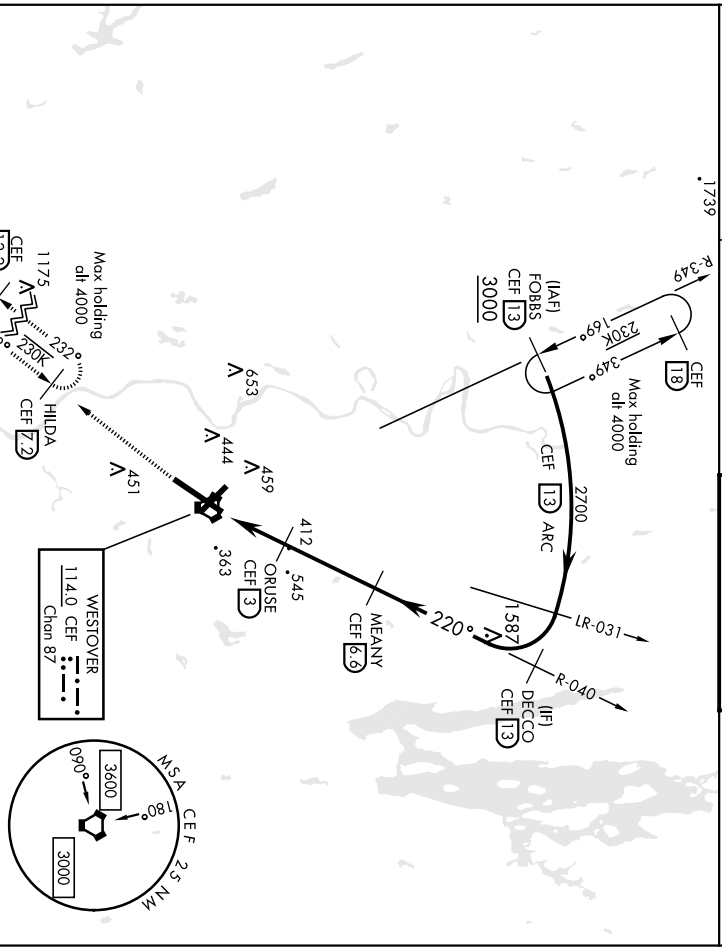
ELEV	241	THRE	236
------	-----	------	-----



CS 3,000° TCH 53											
CATEGORY	A	B	C	D	E						
S-ILS 5	486/40		250	700/50		464 (500-1)					
S-LOC 5 *	700/40	464 (500-1/2)	700/50		464 (500-1)						
CIRCLING	780-1 539 (600-1-1)	800-1 559 (600-1)	820-1 1/2 579 (600-1 1/2)	960-2 1/4 719 (800-2 1/4)	980-2 1/2 739 (800-2 1/2)						
SPRINGFIELD/CHICOPPEE, MASSACHUSETTS						42° 11' N 072° 32' W WESTOVER ARB METROPOLITAN (KCEF)					
Andrl 1 12NOV15											
		FAF to MAP 5.9 NM		HIRL all Rwy							
	Knots	60	90	120	150	180					
	Min:Sec	5:54	3:56	2:57	2:22	1:58					

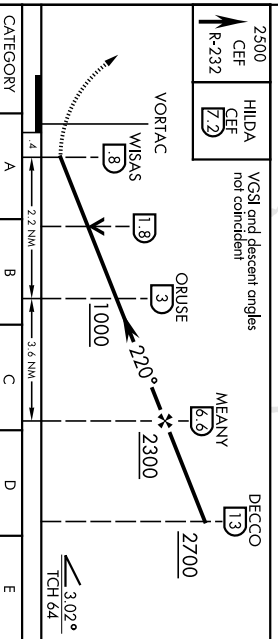
TACAN RWY 23

VORTAC CEF Chom 87	APCH CRS TDZE 241 Arpt Elev 241	Rwy Idg 11,598	AL-447 [USAF]	WESTOVER ARB METROPOLITAN (KCEF)
114.0	220°		ALSf-1	MISSED APPROACH: Climb to 2500 via CEF R-232 to HILDA and hold, expect radar vectors.
▼ ** When ALS Inop, increase CAT AB RVR to 55 and vis to 1 mile. CAT CDE vis to 1/2 mile. ** Circling not authorized; all CAT acct from Rwy 23, clockwise to Rwy 33.				
114.0 142.525	ATIS *	BRADLEY APP CON 125.35 281.5	WESTOVER TOWER * 134.85 (CTAF) 348.75	GND CON 118.35 275.8



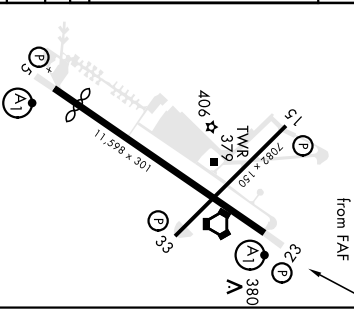
RADAR REQUIRED

EMERG SAFE ALT 100 NM 6400



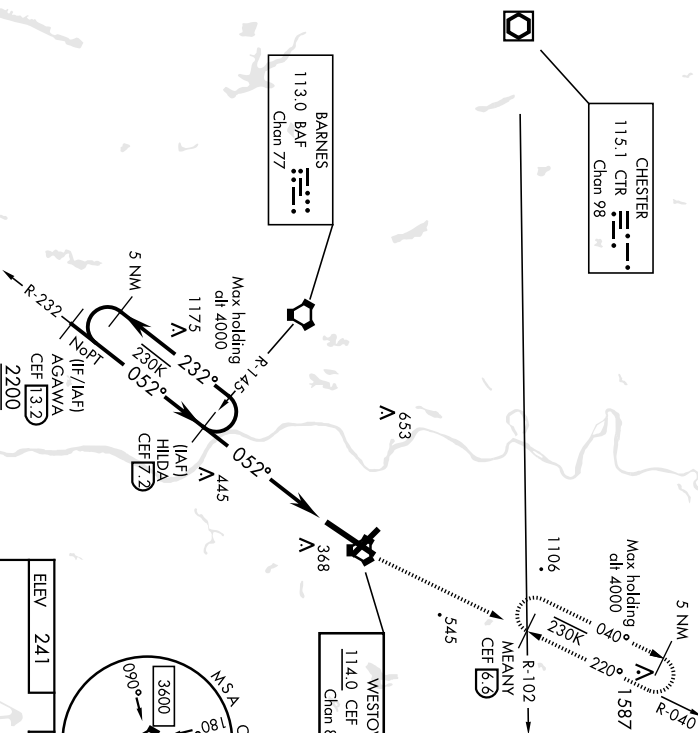
ELEV 241	TDZE 241
Rwy 5 Idg 10,396'	220° 6.2 NM from FAF

CATEGORY	A	B	C	D	E
S-23 *	760/24 519 (600-1/2)	800-1	820-1 1/2	960-2 1/4	980-2 1/2
CIRCLING **	539 (600-1)	559 (600-1)	579 (600-1 1/2)	719 (800-2 1/4)	739 (800-2 1/2)



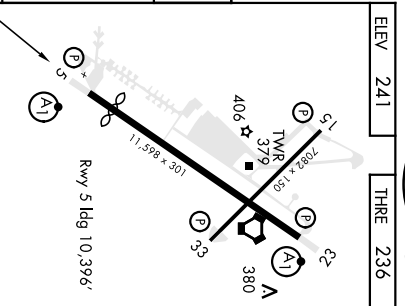
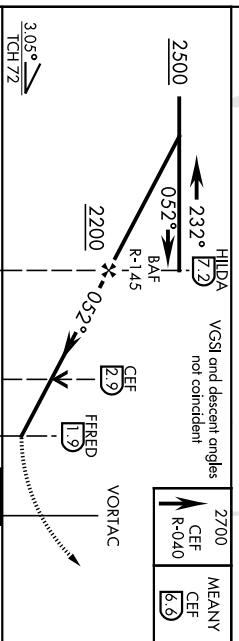
TACAN or VOR Rwy 5

VORTAC CEF Chn 87	APCH CRS 052°	Rwy Idg 10,396' THRE 236 Apxl Elev 241	AL-447 [USAF]	WESTOVER TOWER (KCEF)
* When AIS Mop increase CAT AB RVR to 55 and vis to 1 mile, CAT CDE vis to 1/2 miles. ** Circling not authorized at CAT actn from Rwy 23 clockwise to Rwy 33.			ALSF-1	MISSED APPROACH: Climb to 2700 via CEF R-040 to MEANY and hold, expect radar vectors.
ATIS * 114.0 142.525		BRADLEY APP CON 125.35 281.5	WESTOVER TOWER * 134.85 (CTAF) 348.75	GND CON 118.35 275.8



RADAR REQUIRED

EMERG SAFE ALT 100 NM 6400



ELEV	241	THRE	236
------	-----	------	-----

CATEGORY	A	B	C	D	E
	820/140 584 (600-3/4)	820-1 1/4 584 (600-1 1/2)	960-2 1/4 719 (800-2 1/2)	980-2 1/2 739 (800-2 1/2)	980-2 1/2 739 (800-2 1/2)
5-5 *	820-1 1/4 579 (600-1)				
** CIRCLING	820-1 3/4 579 (600-1 1/4) 719 (800-2 1/2) 739 (800-2 1/2)				

FAF to MAP 5.3 NM	HRL all Rwy				
	Knots	60	90	120	150
	5:18	3:32	2:39	2:07	1:46

SPRINGFIELD/CHICOPEE, MASSACHUSETTS
 42°11'N 072°32'W
 WESTOVER ARB METROPOLITAN (KCEF)
 Andrl 1 12NOV15
TACAN or VOR Rwy 5