

LOC I-CDW	APP CRS	Rwy Idg	4418
109.35	223°	THRE	172
		Apt Elev	172

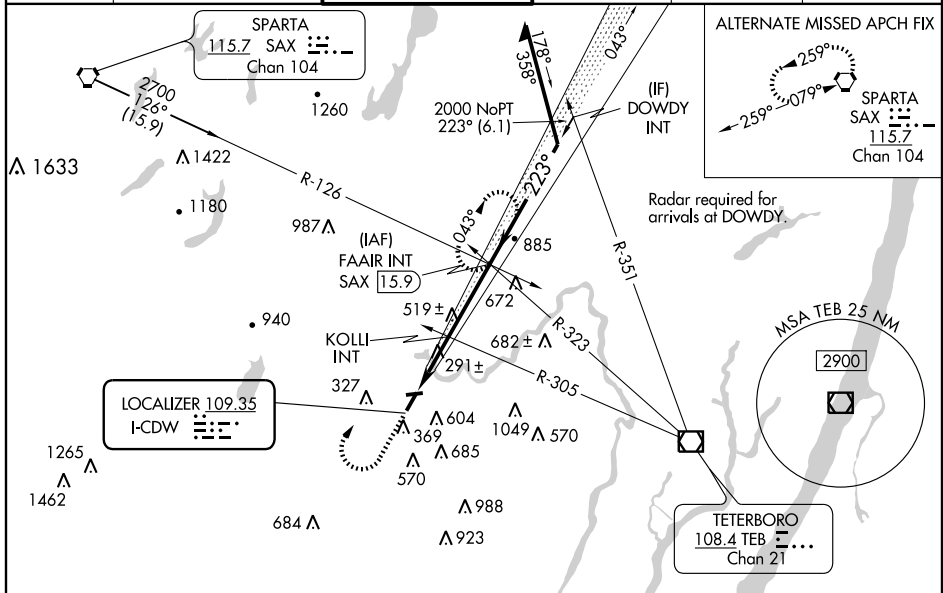
LOC RWY 22

CALDWELL / ESSEX COUNTY (CDW)

NA Circling to Rwy 4, 10, 28 NA at night. When VGSI inop, Straight-in/Circling Rwy 22 procedure NA at night. Visibility reduction by helicopters NA. When local altimeter setting not received, use Newark altimeter setting and increase all MDA 60 feet and Circling Cats A and C visibility 1/4 mile. KOLLI INT minimums: increase all MDA 60 feet and increase S-22 Cats C/D and Circling Cats A/B/C visibility 1/4 mile.

MISSED APPROACH: Climb to 1100 then climbing right turn to 2700 on I-CDW NE course to FAAIR INT and hold, continue climb-in-hold to 2700.

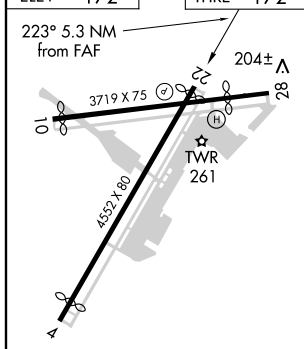
ATIS	NEW YORK APP CON	CALDWELL TOWER ★	GND CON	CLNC DEL	UNICOM
135.5	127.6 379.9	119.8 (CTAF) 0	121.9	121.1	122.95



NE-2, 31 MAY 2012 to 28 JUN 2012

NE-2, 31 MAY 2012 to 28 JUN 2012

ELEV 172	THRE 172
----------	----------



1100	2700	I-CDW NE crs	FAAIR INT	FAAIR INT SAX 15.9	Remain within 10 NM
*1020 when using Newark altimeter setting.					

FAF to MAP 5.3 NM					
Knots	60	90	120	150	180
Min:Sec	5:18	3:32	2:39	2:07	1:46

CATEGORY	A	B	C	D
S-22	960-1 788 (800-1)	960-1¼ 788 (800-1¼)	960-2½ 788 (800-2½)	788 (800-2½)
CIRCLING	960-1 788 (800-1)	980-1¼ 808 (900-1¼)	1040-2½ 868 (900-2½)	1100-3 928 (1000-3)
KOLLI INT MINIMUMS				
S-22	560-1	388 (400-1)	560-1½	388 (400-1½)
CIRCLING	940-1 768 (800-1)	980-1 808 (900-1)	1040-2½ 868 (900-2½)	1100-3 928 (1000-3)

WAAS CH 58022 W22A	APP CRS 223°	Rwy Idg THRE 172 Apt Elev 172	4418
--	------------------------	---	-------------

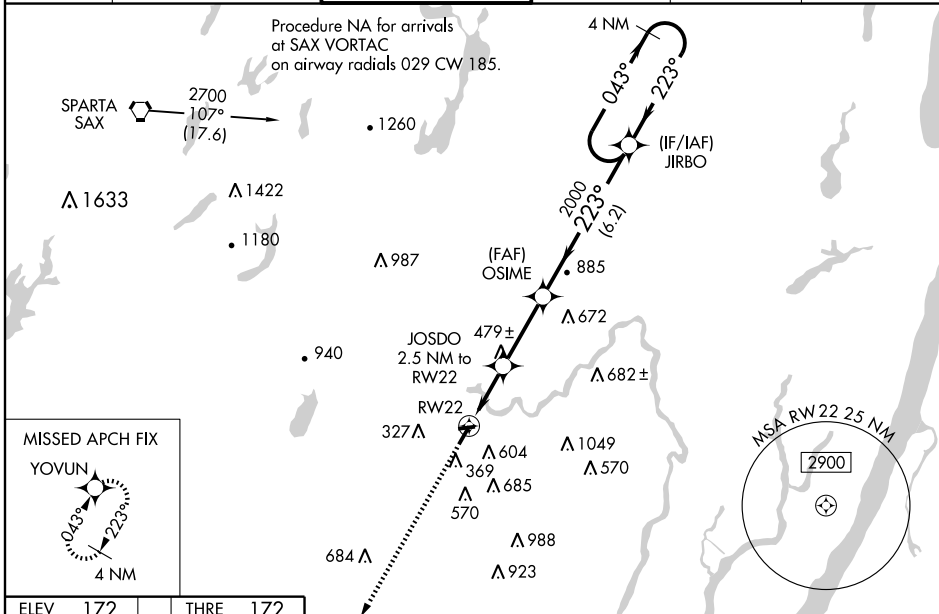
RNAV (GPS) RWY 22

CALDWELL / ESSEX COUNTY (CDW)

▼ For uncompensated Baro-VNAV systems, LNAV/VNAV NA below -15°C (5°F) or above 54°C (130°F). DME/DME RNP-0.3 NA. Visibility reduction by helicopters NA. When local altimeter setting not received, use Newark altimeter setting and increase all DA 50 feet and all MDA 60 feet. Increase LNAV/VNAV all Cats visibility ¼ mile, LNAV Cat C visibility ½ mile, and Circling Cats A/B/C visibility ¼ mile. Baro-VNAV NA when using Newark altimeter setting. When VGS1 inop, Straight in/Circling Rwy 22 procedure NA at night. Circling to Rwy 4, 10, 28 NA at night.

MISSED APPROACH:
Climb to 2000 direct
YOYUN and hold.

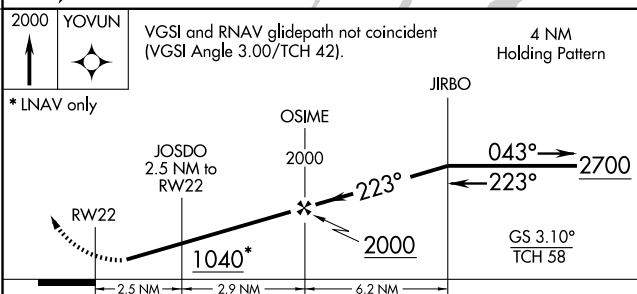
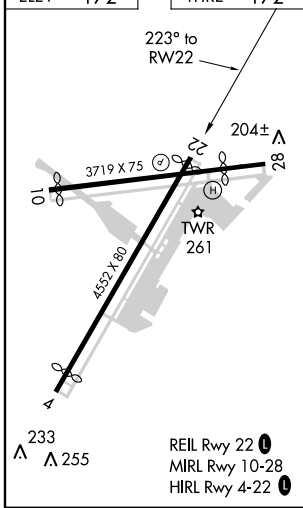
ATIS 135.5	NEW YORK APP CON 127.6 379.9	CALDWELL TOWER ★ 119.8 (CTAF) 0	GND CON 121.9	CLNC DEL 121.1	UNICOM 122.95
----------------------	--	---	-------------------------	--------------------------	-------------------------



NE-2, 31 MAY 2012 to 28 JUN 2012

NE-2, 31 MAY 2012 to 28 JUN 2012

ELEV 172	THRE 172
----------	----------



CATEGORY	A	B	C	D
LPV DA	459-1		287 (300-1)	NA
LNAV/VNAV DA	610-1 3/8		438 (500-1 3/8)	NA
LNAV MDA	740-1	568 (600-1)	740-1 5/8 568 (600-1 5/8)	NA
CIRCLING	940-1 768 (800-1)	980-1 808 (900-1)	1040-2 1/2 868 (900-2 1/2)	NA

WAAS CH 42622 W04A	APP CRS 043°	Rwy Idg THRE 172 Apt Elev 172	4177
--	------------------------	---	-------------

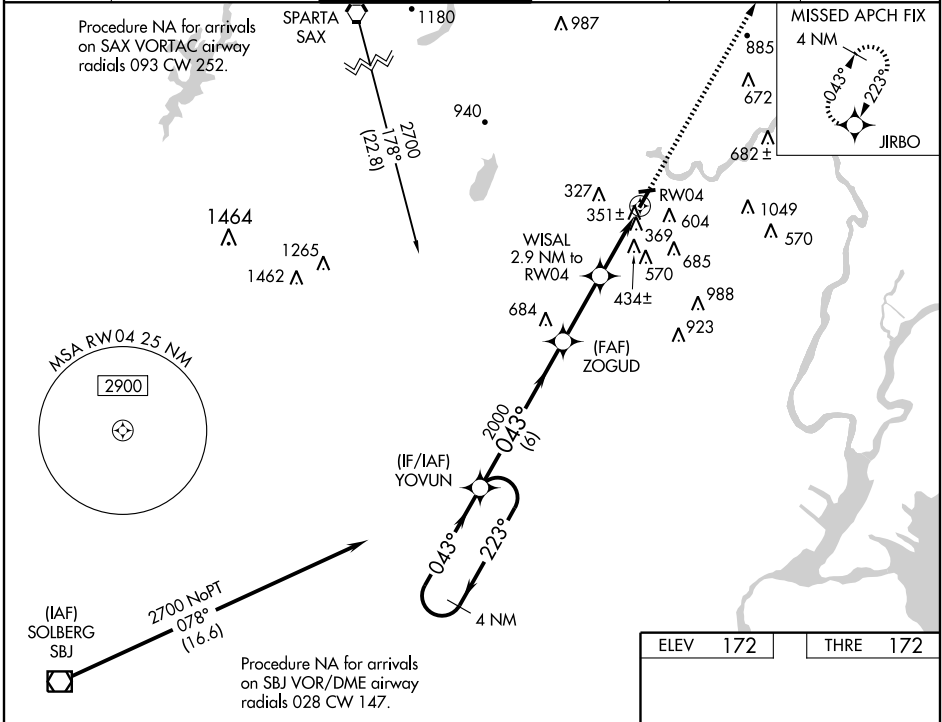
RNAV (GPS) RWY 4

CALDWELL / ESSEX COUNTY (CDW)

⚠ Circling to Rwy 10, 28 NA at night. When VGSI inop, Circling Rwy 22 NA at night. DME/DME RNP-0.3 NA. Visibility reduction by helicopters NA. Straight-in/Circling Rwy 4 procedure NA at night. When local altimeter setting not received, use Newark altimeter setting and increase all MDA 60 feet, and LNAV Cat C and D and Circling Cat A-C visibility ¼ mile.

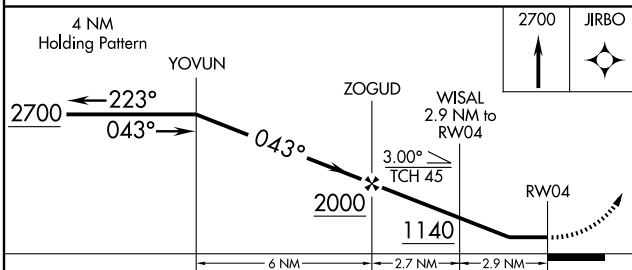
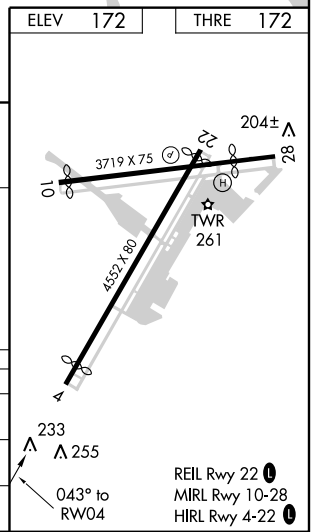
MISSED APPROACH:
Climb to 2700 direct JIRBO and hold.

ATIS 135.5	NEW YORK APP CON 127.6 379.9	CALDWELL TOWER ★ 119.8 (CTAF) 0	GND CON 121.9	CLNC DEL 121.1	UNICOM 122.95
----------------------	--	--	-------------------------	--------------------------	-------------------------



NE-2, 31 MAY 2012 to 28 JUN 2012

NE-2, 31 MAY 2012 to 28 JUN 2012



CATEGORY	A	B	C	D
LP MDA	620-1	448 (500-1)	620-1 3/8	448 (500-1 3/8)
LNAV MDA	660-1	488 (500-1)	660-1 3/8	488 (500-1 3/8)
CIRCLING	940-1 768 (800-1)	980-1 808 (900-1)	1040-2 1/2 868 (900-2 1/2)	1100-3 928 (1000-3)