

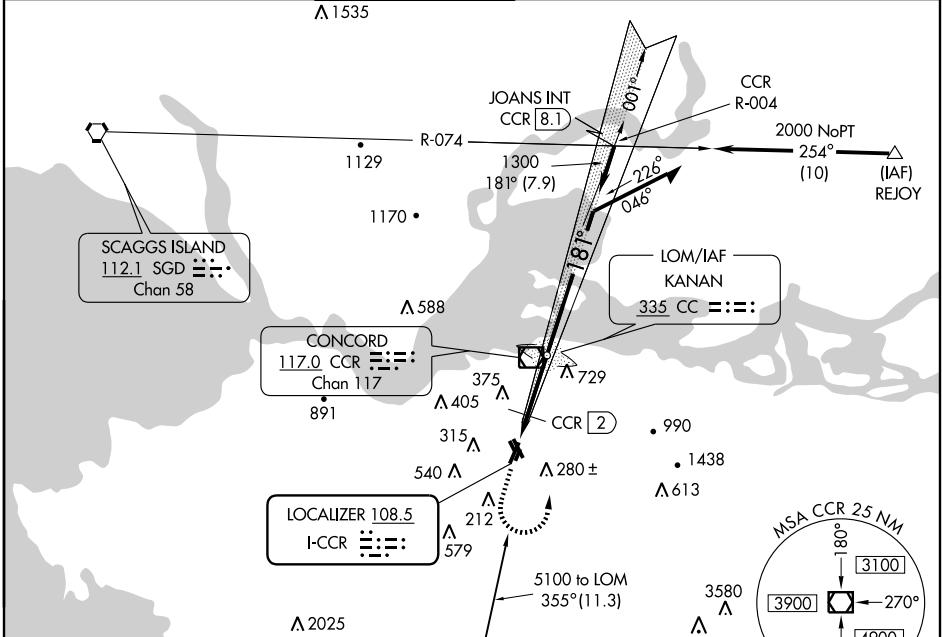
LDA RWY 19R

CONCORD/BUCHANAN FIELD (CCR)

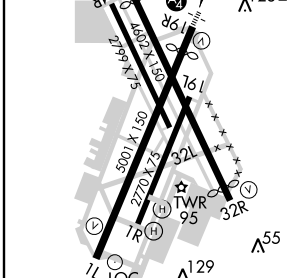
LOC I-CCR 108.5	APP CRS 181°	Rwy Idg TDZE Apt Elev	4410 20 23
---------------------------	------------------------	-----------------------------	---------------------------------------

<p>Circling not authorized west of Rwy 1L-19R. † Inoperative table does not apply to Cat C.</p>	<p>MALES </p>	<p>MISSED APPROACH: Climb to 900 then climbing left turn to 3500 direct CCR VOR/DME.</p>
	<p>ATIS 124.7</p>	<p>TRAVIS APP CON 119.9 322.325</p>

<p>GND CON 121.9</p>	<p>CLNC DEL 118.75</p>	<p>UNICOM 122.95</p>
---------------------------------	-----------------------------------	---------------------------------



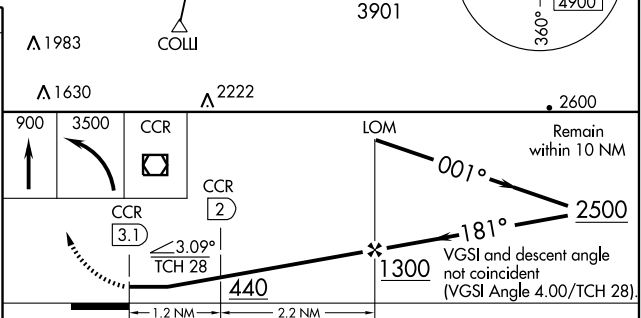
ELEV 23	D	TDZE 20
---------	----------	---------



HIRL Rwy 1L-19R
REIL Rwy 1L and 32R
MIRL Rwy 14L-32R

FAF to MAP 3.4 NM

Knots	60	90	120	150	180
Min:Sec	3:24	2:16	1:42	1:22	1:08



CATEGORY	A	B	C	D
S-19R ↑	440- ³ / ₄	420 (500- ³ / ₄)	440-1 ¹ / ₄ 420 (500-1 ¹ / ₄)	NA
CIRCLING	580-1 557 (600-1)	680-1 657 (700-1)	680-1 ³ / ₄ 657 (700-1 ³ / ₄)	NA
DME MINIMUMS				
S-19R	380- ³ / ₄ 360 (400- ³ / ₄)			NA
CIRCLING	580-1 557 (600-1)	680-1 657 (700-1)	680-1 ³ / ₄ 657 (700-1 ³ / ₄)	NA

SW-2, 31 MAY 2012 to 28 JUN 2012

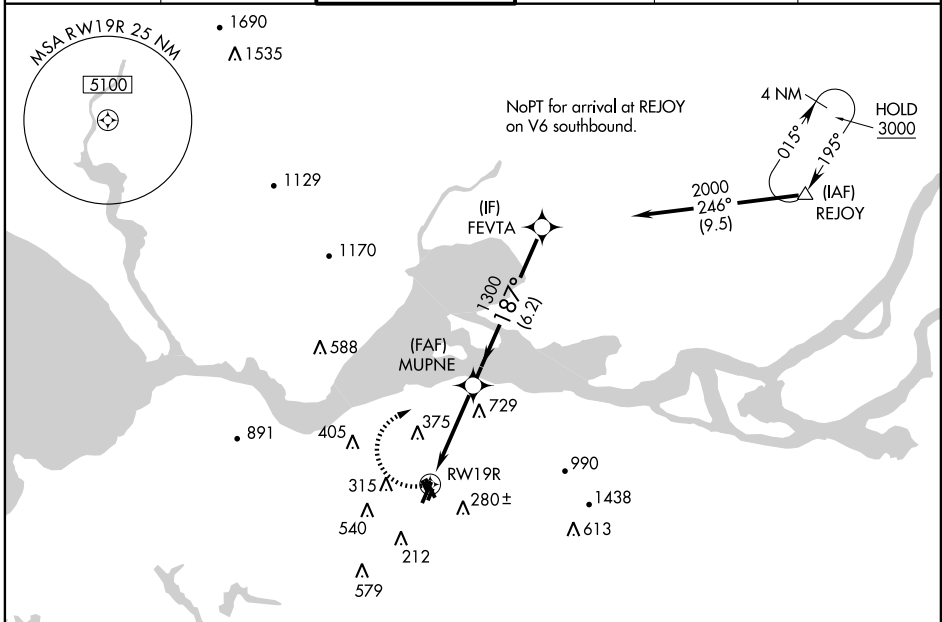
SW-2, 31 MAY 2012 to 28 JUN 2012

APP CRS	Rwy Idg	4410
187°	THRE	22
	Apt Elev	26

RNAV (GPS) Y RWY 19R

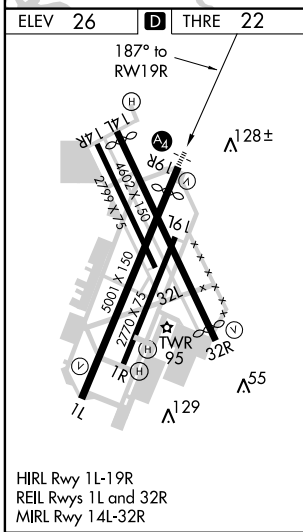
CONCORD/BUCHANAN FIELD (C'CR)

<p>▼ When VGSI inoperative, circling Rwy 1L, 32L and 32R NA at night. ▲ DME/DME RNP-0.3 NA. Visibility reduction by helicopters NA. Circling NA west of Rwy 1L-19R. For inoperative MALS, increase LNAV Cat A and B visibility ¼ mile and Cat C visibility ½ mile.</p>		<p>MALS</p>	<p>MISSED APPROACH: Climbing right turn to 3000 direct REJOY and hold.</p>		
<p>ATIS</p> <p>124.7</p>	<p>TRAVIS APP CON</p> <p>119.9 322.325</p>	<p>CONCORD TOWER*</p> <p>119.7 (CTAF) 257.8</p>	<p>GND CON</p> <p>121.9</p>	<p>CLNC DEL</p> <p>118.75</p>	<p>UNICOM</p> <p>122.95</p>



SW-2, 31 MAY 2012 to 28 JUN 2012

SW-2, 31 MAY 2012 to 28 JUN 2012



ELEV 26	D THRE 22			
<p>187° to RWY 19R</p>				
<p>VGSI and descent angles not coincident. (VGSI Angle 4.00°/TCH 28).</p>				
<p>3000</p> <p>REJOY</p> <p>△</p>	<p>FEVTA</p>			
<p>MUPNE</p> <p>2.2 NM to RWY 19R</p> <p>3.00° TCH 45</p> <p>1300</p> <p>2000</p> <p>187°</p> <p>2.2 NM 1.7 NM 6.2 NM</p>				
<p>CATEGORY</p>	<p>A</p>	<p>B</p>	<p>C</p>	<p>D</p>
<p>LNAV MDA</p>	<p>980-1 958 (1000-1)</p>	<p>980-1¼ 958 (1000-1½)</p>	<p>980-2½ 958 (1000-2½)</p>	<p>NA</p>
<p>CIRCLING</p>	<p>980-1¼ 954 (1000-1½)</p>	<p>980-1½ 954 (1000-1½)</p>	<p>980-3 954 (1000-3)</p>	<p>NA</p>

WAAS CH 86424 W19A	APP CRS 187°	Rwy Idg THRE 22 Apt Elev 26	4410
--	------------------------	---	-------------

RNAV (GPS) Z RWY 19R

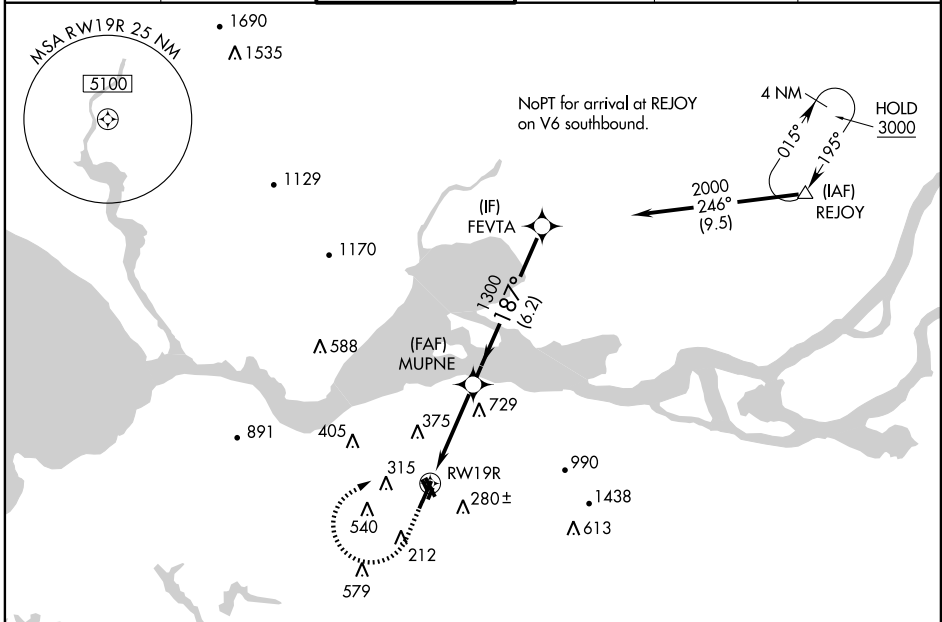
CONCORD/BUCHANAN FIELD (CCR)

▽ DME/DME RNP-0.3 NA. Visibility reduction by helicopters NA.
▲ For inoperative MALS, increase LPV all Cats visibility to 2¾ miles.
 * Inoperative table does not apply.
 * Missed approach requires minimum climb of 500 feet per NM to 2000.



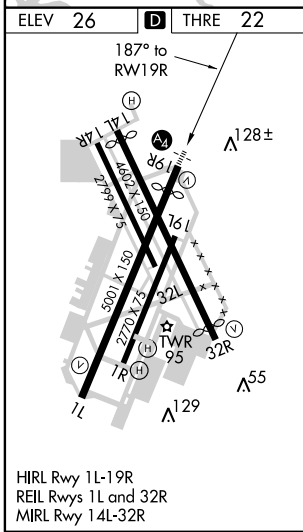
MISSED APPROACH: Climb to 1350 then climbing right turn to 3000 direct REJOY and hold.

ATIS 124.7	TRAVIS APP CON 119.9 322.325	CONCORD TOWER* 119.7 (CTAF) 257.8	GND CON 121.9	CLNC DEL 118.75	UNICOM 122.95
----------------------	--	---	-------------------------	---------------------------	-------------------------



SW-2, 31 MAY 2012 to 28 JUN 2012

SW-2, 31 MAY 2012 to 28 JUN 2012



ELEV 26	D	THRE 22	
1350	3000	REJOY	VGSI and RNAV glidepath not coincident. (VGSI Angle 4.00°/TCH 28).
		MUPNE	FEVTA
RWY 19R		1300	2000
		1300	GS 3.00° TCH 45
		3.9 NM	6.2 NM
CATEGORY	A	B	C
LPV DA *	272-¾		250 (300-¾)
LPV DA	822-2½		800 (800-2½)
			NA

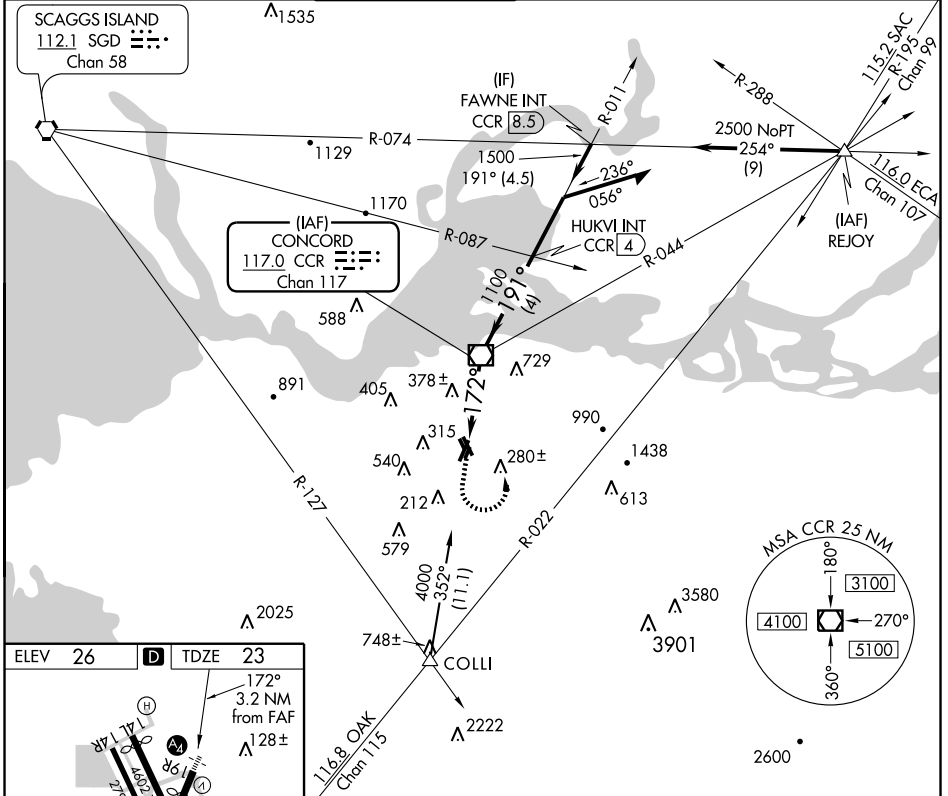
VOR/DME CCR 117.0 Chan 117	APP CRS 172°	Rwy Idg TDZE 23 Apt Elev 26	4410
---	------------------------	---	-------------

VOR RWY 19R

CONCORD/BUCHANAN FIELD (CCR)

<p>▼ Inoperative table does not apply. Circling NA west of Rwy 1L and 14R. Visibility reduction by helicopters NA.</p>	<p>MALS —</p>	<p>MISSED APPROACH: Climb to 1500 then climbing left turn to 2900 direct CCR VOR/DME then via CCR R-044 to REJOY INT.</p>
	<p>ATIS 124.7 TRAVIS APP CON 119.9 322.325 CONCORD TOWER* 119.7 (CTAF) 257.8 GND CON 121.9 CLNC DEL 118.75 UNICOM 122.95</p>	

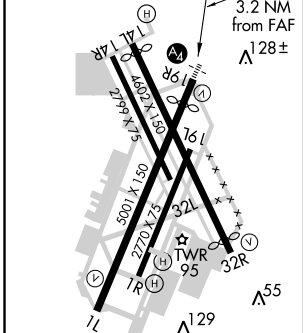
ATIS 124.7	TRAVIS APP CON 119.9 322.325	CONCORD TOWER* 119.7 (CTAF) 257.8	GND CON 121.9	CLNC DEL 118.75	UNICOM 122.95
----------------------	--	---	-------------------------	---------------------------	-------------------------



SW-2, 31 MAY 2012 to 28 JUN 2012

SW-2, 31 MAY 2012 to 28 JUN 2012

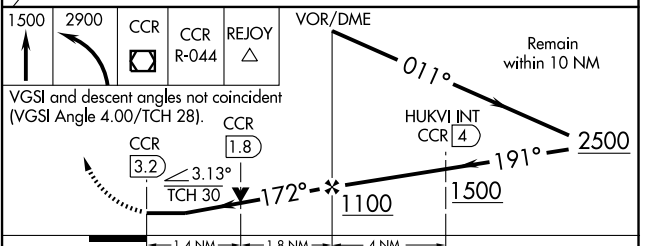
ELEV 26	D	TDZE 23
---------	----------	---------



HIRL Rwy 1L-19R
REIL Rwy 1L and 32R
MIRL Rwy 14L-32R

FAF to MAP 3.2 NM

Knots	60	90	120	150	180
Min:Sec	3:12	2:08	1:36	1:17	1:04



CATEGORY	A	B	C	D
S-19R	640-1	617 (700-1)	640-1¾ 617 (700-1¾)	NA
CIRCLING	640-1 614 (700-1)	680-1 654 (700-1)	680-1¾ 654 (700-1¾)	NA