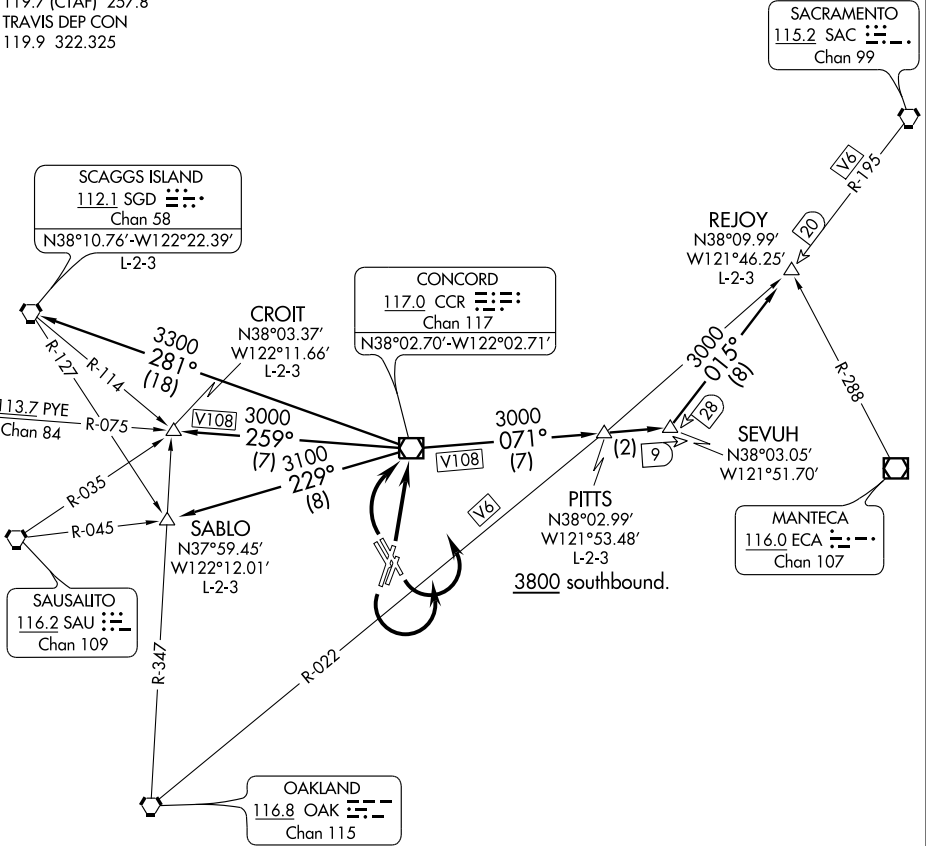


BUCHANAN NINE DEPARTURE

GND CON
121.9
CONCORD TOWER *
119.7 (CTAF) 257.8
TRAVIS DEP CON
119.9 322.325



SW-2, 31 MAY 2012 to 28 JUN 2012

SW-2, 31 MAY 2012 to 28 JUN 2012

TAKE-OFF MINIMUMS

- Rwys 1L, 14L, 19R, 32R: Standard with the following minimum climb requirements:
- Rwy 1L: Obstacle climb of 360' per NM to 1100 (3800 for PITTS Transition).
ATC climb of 360' per NM to 3000.
- Rwy 14L: Obstacle climb of 420' per NM to 2700 (3800 for PITTS Transition).
ATC climb of 420' per NM to 3000.
- Rwy 19R: Obstacle climb of 490' per NM to 4000.
- Rwy 32R: Obstacle climb of 360' per NM to 500 (3800 for PITTS Transition).
ATC climb of 320' per NM to 3000.
- Rwys 1R, 14R, 19L, 32L: NA-air traffic.

(NARRATIVE ON FOLLOWING PAGE)

NOTE: Chart not to scale.

BUCHANAN NINE DEPARTURE



DEPARTURE ROUTE DESCRIPTION

TAKE-OFF RUNWAY 1L: Climb direct CCR VOR/DME . Thence

TAKE-OFF RUNWAY 14L: Climbing left turn direct CCR VOR/DME. Thence

TAKE-OFF RUNWAY 19R: Climbing left turn direct CCR VOR/DME. Thence

TAKE-OFF RUNWAY 32R: Climbing right turn direct CCR VOR/DME. Thence

....via (transition) or (assigned route).

CROIT TRANSITION (BCHN9.CROIT): From over CCR VOR/DME via CCR R-259 to CROIT INT.

PITTS TRANSITION (BCHN9.PITTS): From over CCR VOR/DME via CCR R-071 to PITTS INT.

REJOY TRANSITION (BCHN9.REJOY): From over CCR VOR/DME via CCR R-071 and SAC R-195 to REJOY INT.

SABLO TRANSITION (BCHN9.SABLO): From over CCR VOR/DME via CCR R-229 to SABLO INT.

SCAGGS ISLAND TRANSITION (BCHN9.SGD): From over CCR VOR/DME via CCR R-281 to SGD VORTAC.

TAKE-OFF OBSTACLE NOTES

- Rwy 1L: Multiple trees and bushes beginning 675' from DER, 9' left of centerline, up to 48' AGL/98' MSL.
Multiple poles, light poles and antennas on buildings beginning 639' from DER, 120' left of centerline, up to 50' AGL/72' MSL.
Fence 117' from DER, 2' right of centerline, 12' AGL/29' MSL.
Sign 1996' from DER, 812' left of centerline, 45' AGL/78' MSL.
Flagpole 1520' from DER, 753' left of centerline, 40' AGL/71' MSL.
- Rwy 14L: Multiple trees beginning 841' from DER, 61' left of centerline, up to 78' AGL/102' MSL.
Building 1071' from DER, 35' left of centerline, 30' AGL/58' MSL.
Fence 225' from DER, 29' left of centerline, 12' AGL/33' MSL.
- Rwy 19R: Multiple trees beginning 604' from DER, 82' left of centerline, up to 70' AGL/108' MSL.
Light pole 1392' from DER, 749' right of centerline, 51' AGL/71' MSL.
OL on building 2451' from DER, 911' left of centerline, 73' AGL/97' MSL.
Fence 123' from DER, 503' left of centerline, 6' AGL/30' MSL.
- Rwy 32R: Train 1 NM from DER, 1948' left of centerline, 23' AGL/102' MSL.
OL on hopper 2110' from DER, 601' right of centerline, 79' AGL/99' MSL.
OL on tank 1.1 NM from DER, 1426' right of centerline, 193' AGL/213' MSL.
Flagpole 655' from DER, 300' right of centerline, 35' AGL/43' MSL.
Sign 697' from DER, 248' right of centerline, 25' AGL/41' MSL.
Road/vehicle 561' from DER, on centerline, 15' AGL/49' MSL.
Building 633' from DER, 246' left of centerline, 20' AGL/35' MSL.
Tree 825' from DER, 635' left of centerline, 25' AGL/40' MSL.
TRMSN tower 6015' from DER, 1839' left of centerline, 145' AGL/173' MSL.

SW-2, 31 MAY 2012 to 28 JUN 2012

SW-2, 31 MAY 2012 to 28 JUN 2012

KANAN TWO DEPARTURE

SL-5320 (FAA)

CONCORD/ BUCHANAN FIELD (CCR)
CONCORD, CALIFORNIA

GND CON
121.9
CONCORD TOWER *
119.7 (CTAF) 257.8
TRAVIS DEP CON
119.9 322.325

SACRAMENTO
115.2 SAC
Chan 99
N38°26.62'-W121°33.10'
L-2-3, H-3

LINDEN
114.8 LIN
Chan 95
N38°04.48'-W121°00.23'
L-2-3, H-3

LOM
KANAN
335 CC
N38°02.78'
W122°02.01'

SIDMY
N38°07.36'
W121°48.32'

CONCORD
117.0 CCR
Chan 117

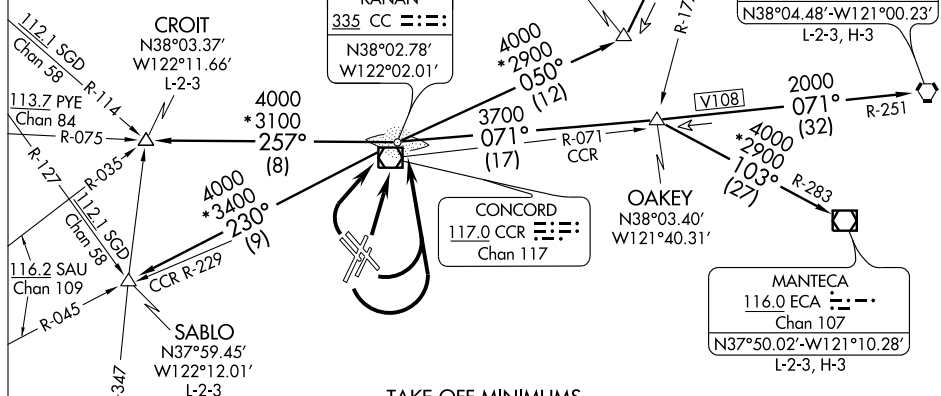
OAKKEY
N38°03.40'
W121°40.31'

MANTECA
116.0 ECA
Chan 107
N37°50.02'-W121°10.28'
L-2-3, H-3

OAKLAND
116.8 OAK
Chan 115

SW-2, 31 MAY 2012 to 28 JUN 2012

SW-2, 31 MAY 2012 to 28 JUN 2012



TAKE-OFF MINIMUMS

Rwys 1L/1R, 14L/14R, 19L/19R, 32L/32R, standard with the following minimum climb gradients:

- Rwys 1L/1R: Obstacle climb of 354' per NM to 1200
- Rwy 14L: Obstacle climb of 400' per NM to 2200.
- Rwy 14R: Obstacle climb of 380' per NM to 2200.
- Rwys 19L/19R: Obstacle climb of 470' per NM to 3700.
- Rwys 32L/32R: Obstacle climb of 360' per NM to 1200.

TAKE-OFF OBSTACLE NOTES

- Rwy 1L: Fence 117' from DER, on centerline, 12' AGL/29' MSL.
 Antenna on building 639' from DER, 382' right of centerline, 30' AGL/48' MSL.
 Multiple trees and bushes beginning 675' from DER, 97' left of centerline, up to 60' AGL/83' MSL.
 Light pole 1362' from DER, 390' right of centerline, 40' AGL/65' MSL
 Camera 2962' from DER, 48' right of centerline, 75' AGL/96' MSL.
 Multiple trees and bushes beginning 1261' from DER, 100' right of centerline, up to 60' AGL/78' MSL.
 Flagpole 1520' from DER, 753' left of centerline, 40' AGL/71' MSL.
 Sign 1996' from DER, 812' left of centerline, 45' AGL/78' MSL.
 Pole 1907' from DER, 120' left of centerline, 50' AGL/72' MSL.
- Rwy 1R: Tree 1927' from DER, 483' right of centerline, 65' AGL/131' MSL.
 Tree 1948' from DER, 222' right of centerline, 65' AGL/104' MSL.
 Pole 1552' from DER, 98' right of centerline, 25' AGL/67' MSL.
 Pole 1865' from DER, 358' right of centerline, 45' AGL/96' MSL.

(NOTES CONTINUED ON THE FOLLOWING PAGE)

(NARRATIVE ON FOLLOWING PAGE)

NOTE: ADF Required

NOTE: Chart not to scale.

KANAN TWO DEPARTURE

DEPARTURE ROUTE DESCRIPTION

- TAKE-OFF RUNWAYS 1L/R: Climb direct CC LOM. Thence....
 - TAKE-OFF RUNWAYS 14L/R: Climbing left turn direct CC LOM. Thence....
 - TAKE-OFF RUNWAYS 19L/R: Climbing left turn direct CC LOM. Thence....
 - TAKE-OFF RUNWAYS 32L/R: Climbing right turn direct CC LOM. Thence....
- ...via (transition) or (assigned route).

CROIT TRANSITION (KANA2.CROIT): From over CC LOM via CC 257° bearing to CROIT INT.

LINDEN TRANSITION (KANA2.LIN): From over CC LOM via CC 071° bearing and LIN R-251 to LIN VORTAC.

MANTECA TRANSITION (KANA2.ECA): From over CC LOM via CC 071° bearing and ECA R-283 to ECA VOR/DME.

SABLO TRANSITION (KANA2.SABLO): From over CC LOM via CC 230° bearing to SABLO INT.

SACRAMENTO TRANSITION (KANA2.SAC): From over CC LOM via CC 050° bearing and SAC R-195 to SAC VORTAC.

TAKE-OFF OBSTACLE NOTES (CONT)

- Rwy 14L: Tree 1637' from DER, 328' right of centerline, 50' AGL/82' MSL.
Tree 1496' from DER, 474' right of centerline, 55' AGL/84' MSL.
Pole 1367' from DER, 275' right of centerline, 40' AGL/71' MSL.
Tree 1332' from DER, 61' left of centerline, 65' AGL/81' MSL.
Building 1071' from DER, 35' left of centerline, 30' AGL/58' MSL.
Building 5548' from DER, 1870' left of centerline, 110' AGL/176' MSL.
Obst light on building 5414' from DER, 100' left of centerline, 120' AGL/177' MSL.
Tree 942' from DER, 388' left of centerline, 50' AGL/102' MSL.
Tree 841' from DER, 177' left of centerline, 65' AGL/77' MSL.
Fence 225' from DER, 29' left of centerline, 12' AGL/33' MSL.
- Rwy 14R: Obst light on airport beacon 1140' from DER, 315' right of centerline, 70' AGL/98' MSL.
Antenna 3254' from DER, 1096' right of centerline, 110' AGL/136' MSL.
Obst light on windsock 412' from DER, 451' right of centerline, 35' AGL/51' MSL.
Light 1281' from DER, 167' right of centerline, 45' AGL/69' MSL.
Tree 2745' from DER, 887' left of centerline, 65' AGL/102' MSL.
Building 3240' from DER, 1088' right of centerline, 55' AGL/129' MSL.
- Rwy 19L: Tree 2257' from DER, 28' left of centerline, 70' AGL/97' MSL.
Tree 2132' from DER, 377' left of centerline, 70' AGL/90' MSL.
Tree 3112' from DER, 946' right of centerline, 70' AGL/106' MSL.
Tree 2544' from DER, 384' right of centerline, 60' AGL/87' MSL.
- Rwy 19R: Fence 123' from DER, 503' left of centerline, 12' AGL/30' MSL.
Multiple trees beginning 604' from DER, 489' right of centerline, up to 70' AGL/106' MSL.
Light pole 1392' from DER, 749' right of centerline, 35' AGL/71' MSL.
Obst light 2451' from DER, 911' left of centerline, 77' AGL/97' MSL.
Multiple trees beginning 1276' from DER, 527' left of centerline, up to 70' AGL/108' MSL.
- Rwy 32L: Multiple lighted stacks/towers beginning 6617' from DER, 1926' right of centerline, up to 250' AGL/378' MSL.
Hangar 259' from DER, 300' left of centerline, 25' AGL/37' MSL.
Transmission tower 6015' from DER, 1338' left of centerline, 145' AGL/173' MSL.
Road /vehicle 561' from DER, 504' right of centerline, 15' AGL/49' MSL.
Building 633' from DER, 254' right of centerline, 15' AGL/35' MSL.
Tree 825' from DER, 136' left of centerline, 25' AGL/40' MSL.
- Rwy 32R: Multiple lighted stacks and buildings beginning 6617' from DER, 1426' right of centerline, up to 355' AGL/378' MSL.
Flagpole 665' from DER, 300' right of centerline, 35' AGL/43' MSL.
Building 633' from DER, 246' left of centerline, 20' AGL/35' MSL.
Tree 825' from DER, 635' left of centerline, 25' AGL/40' MSL.
Transmission tower 6015' from DER, 1839' left of centerline, 145' AGL/173' MSL.
Obst light on hopper 2110' from DER, 601' right of centerline, 79' AGL/99' MSL.
Sign 697' from DER, 248' right of centerline, 25' AGL/41' MSL.
Road/vehicle 561' from DER, on centerline, 15' AGL/49' MSL.

SW-2, 31 MAY 2012 to 28 JUN 2012

SW-2, 31 MAY 2012 to 28 JUN 2012