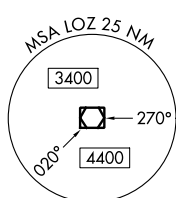


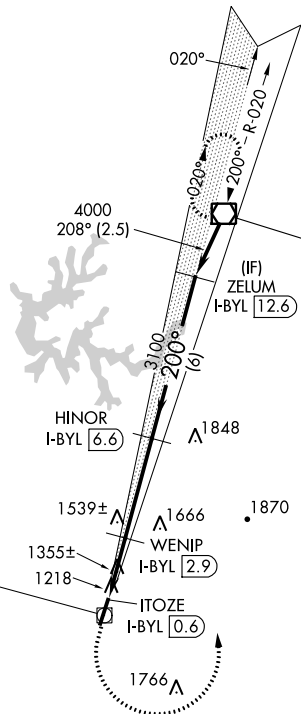
LOC/DME I-BYL <b>108.3</b> Chan <b>20</b>	APP CRS <b>200°</b>	Rwy Idg <b>5498</b> TDZE <b>1178</b> Apt Elev <b>1178</b>
---	------------------------	---

**LOC/DME RWY 20**  
WILLIAMSBURG-WHITLEY COUNTY (BYL)

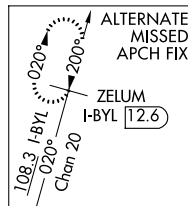
<p><b>V</b> VDP NA with London altimeter setting. When local altimeter setting not received, use London altimeter setting and increase all MDA 60 feet, increase Cat D Circling visibility 1/8 mile.</p> <p><b>A</b> NA</p> <p><b>21°C/-6°F</b></p>	<p>MISSED APPROACH: Climb to 1800 then climbing left turn to 4000 direct LOZ VOR/DME and hold.</p>	
<p>AWOS-3 <b>119.575</b></p>	<p>INDIANAPOLIS CENTER <b>124.625 371.925</b></p>	<p>UNICOM <b>122.7 (CTAF)</b></p>



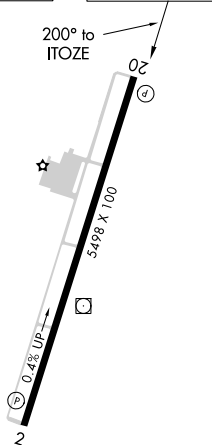
Procedure NA for arrivals on LOZ VOR/DME airway radials 144 CW 245.



**LOCALIZER 108.3**  
I-BYL [3.3]  
Chan 20  
LOC offset 2.88°



ELEV 1178	TDZE 1178
-----------	-----------



MIRL Rwy 2-20  
REIL Rwy 2 and 20

1800	4000	LOZ	VGSI and descent angles not coincident (VGSI Angle 3.17/TCH 30).	
			WENIP I-BYL 2.9	ZELUM I-BYL 12.6
			HINOR I-BYL 6.6	
			ITOZE I-BYL 0.6	
			I-BYL 1.8	
			1940	3100
			1.2 NM	1.1 NM
			3.7 NM	6 NM
CATEGORY	A	B	C	D
S-20	1620-1	442 (500-1)	1620-1 3/8	442 (500-1 3/8)
CIRCLING	1760-1	582 (600-1)	1760-1 1/2	2080-3
			582 (600-1 1/2)	902 (1000-3)

SE-1, 09 NOV 2017 to 07 DEC 2017

SE-1, 09 NOV 2017 to 07 DEC 2017

WAAS CH <b>53312</b> <b>W02A</b>	APP CRS <b>023°</b>	Rwy Idg TDZE <b>1168</b> Apt Elev <b>1178</b>	<b>5498</b>
--	------------------------	---	-------------

# RNAV (GPS) RWY 2

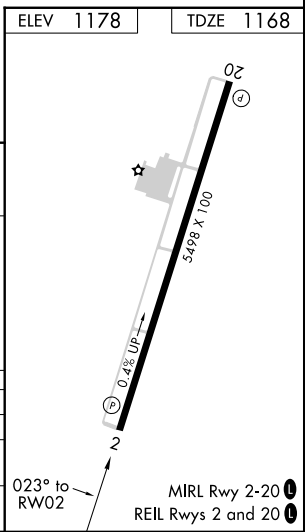
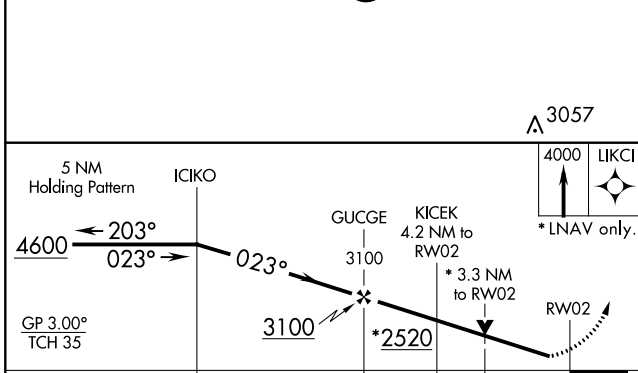
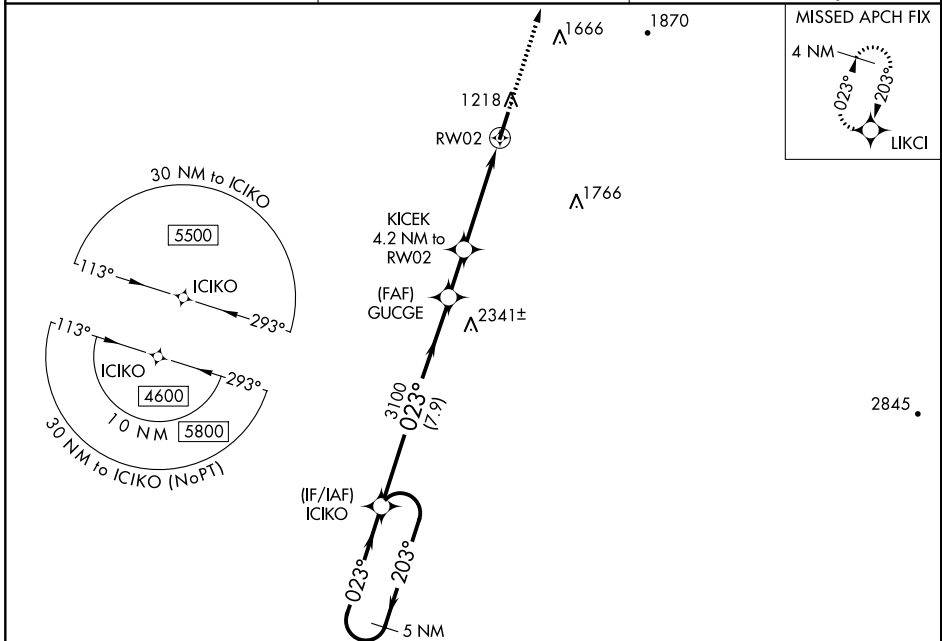
WILLIAMSBURG-WHITLEY COUNTY (BYL)

**NA** When local altimeter setting not received, use London altimeter setting and increase DA 48 feet, MDA 60 feet and LPV all Cats visibility 1/8 mile. DME/DME RNP-0.3 NA. Visibility reduction by helicopters NA. VDP NA with London altimeter setting.

**MISSED APPROACH:** Climb to 4000 direct LKCI and hold.

**-21°C-6°F**

AWOS-3 <b>119.575</b>	INDIANAPOLIS CENTER <b>124.625 371.925</b>	UNICOM <b>122.7 (CTAF) 0</b>
--------------------------	---	---------------------------------



CATEGORY	A	B	C	D
LPV DA	1418 7/8		250 (300-7/8)	
LNAV MDA	2300-1 1/4 1132 (1200-1 1/4)	2300-1 1/2 1132 (1200-1 1/2)	2300-3	1132 (1200-3)
CIRCLING	2300-1 1/4 1122 (1200-1 1/4)	2300-1 1/2 1122 (1200-1 1/2)	2300-3	1122 (1200-3)

SE-1, 09 NOV 2017 to 07 DEC 2017

SE-1, 09 NOV 2017 to 07 DEC 2017

WAAS CH <b>70403</b> <b>W20A</b>	APP CRS <b>203°</b>	Rwy Idg TDZE Apt Elev	<b>5498</b> <b>1178</b> <b>1178</b>
--	------------------------	-----------------------------	---

# RNAV (GPS) RWY 20

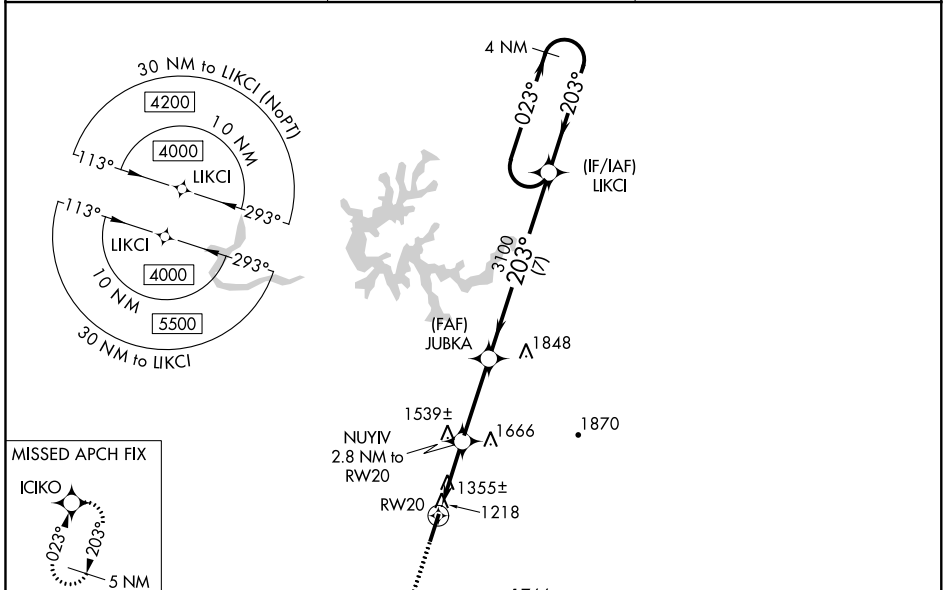
WILLIAMSBURG-WHITLEY COUNTY (BYL)

**NA** Baro-VNAV NA when using London altimeter setting. For uncompensated Baro-VNAV systems, LNAV/VNAV NA below -17°C (2°F) or above 36°C (96°F). When local altimeter setting not received, use London altimeter setting and increase all DA 48 feet, all MDA 60 feet, LPV all Cats visibility 1/8 mile, LNAV/VNAV all Cats visibility 1/4 mile, LNAV Cats C and D visibility 1/4 mile and Circling Cat C visibility 1/4 mile.

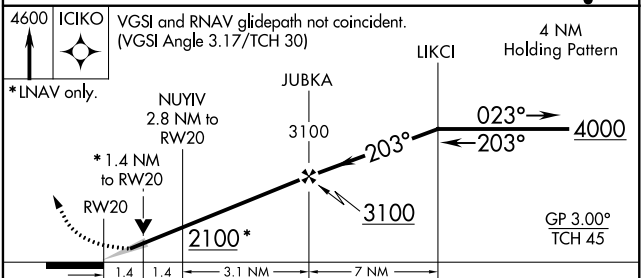
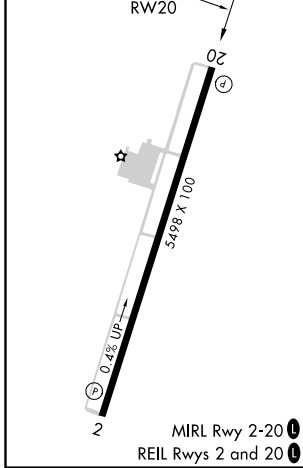
**MISSED APPROACH:** Climb to 4600 direct ICIKO and hold.

**-21°C/-6°F** DME/DME RNP-0.3 NA. VDP NA with London altimeter setting.

<b>AWOS-3</b> <b>119.575</b>	<b>INDIANAPOLIS CENTER</b> <b>124.625 371.925</b>	<b>UNICOM</b> <b>122.7 (CTAF)</b>
---------------------------------	--	--------------------------------------



ELEV 1178	TDZE 1178
-----------	-----------



CATEGORY	A	B	C	D
LPV DA		1554-1 1/4	376 (400-1 1/4)	
LNAV/VNAV DA		1670-1 1/8	492 (500-1 1/8)	
LNAV MDA	1680-1	502 (600-1)	1680-1 3/8	502 (600-1 3/8)
CIRCLING	1760-1	582 (600-1)	1760-1 1/2	2080-3 902 (1000-3)

SE-1, 09 NOV 2017 to 07 DEC 2017

SE-1, 09 NOV 2017 to 07 DEC 2017

VOR/DME LOZ <b>116.1</b> Chan <b>108</b>	APP CRS <b>200°</b>	Rwy Idg <b>5498</b> TDZE <b>1178</b> Apt Elev <b>1178</b>
--	------------------------	---

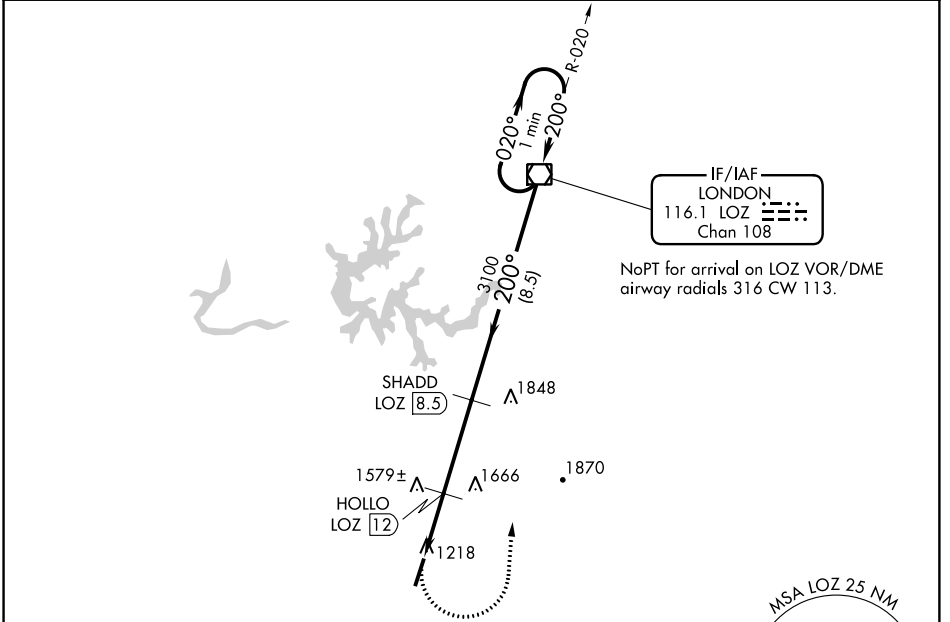
# VOR/DME RWY 20

WILLIAMSBURG-WHITLEY COUNTY (BYL)

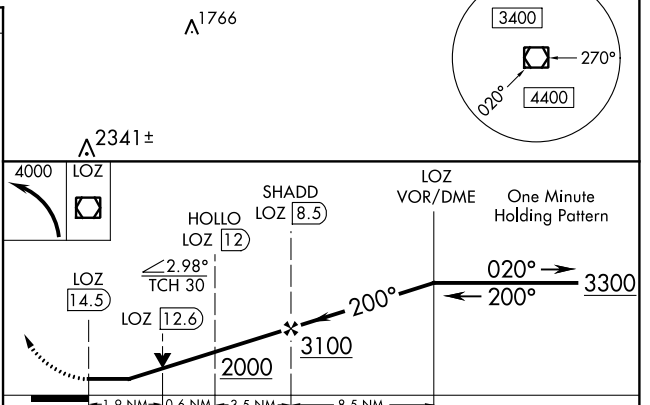
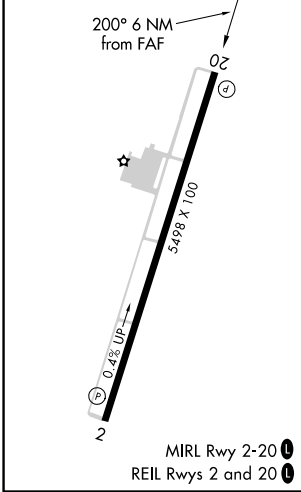
**NA** When local altimeter setting not received, use London altimeter setting increase all MDA 60 feet and increase S-20 Cats C and D and Circling Cat C visibility 1/8 mile. VDP NA with London altimeter setting.

**MISSED APPROACH:**  
Climbing left turn to 4000 direct LOZ VOR/DME and hold.

AWOS-3 <b>119.575</b>	INDIANAPOLIS CENTER <b>124.625 371.925</b>	UNICOM <b>122.7 (CTAF)</b>
--------------------------	---	-------------------------------



ELEV <b>1178</b>	TDZE <b>1178</b>
------------------	------------------



CATEGORY	A	B	C	D
S-20	1840-1	662 (700-1)	1840-1 7/8	662 (700-1 7/8)
CIRCLING	1840-1	662 (700-1)	1840-1 7/8 662 (700-1 7/8)	2080-3 902 (1000-3)

SE-1, 09 NOV 2017 to 07 DEC 2017

SE-1, 09 NOV 2017 to 07 DEC 2017