

WAAS CH 48835 W31A	APP CRS 306°	Rwy Idg 6143 TDZE 4940 Apt Elev 4970
--	------------------------	--

RNAV (GPS) RWY 31

JOHNSON COUNTY (BYG)

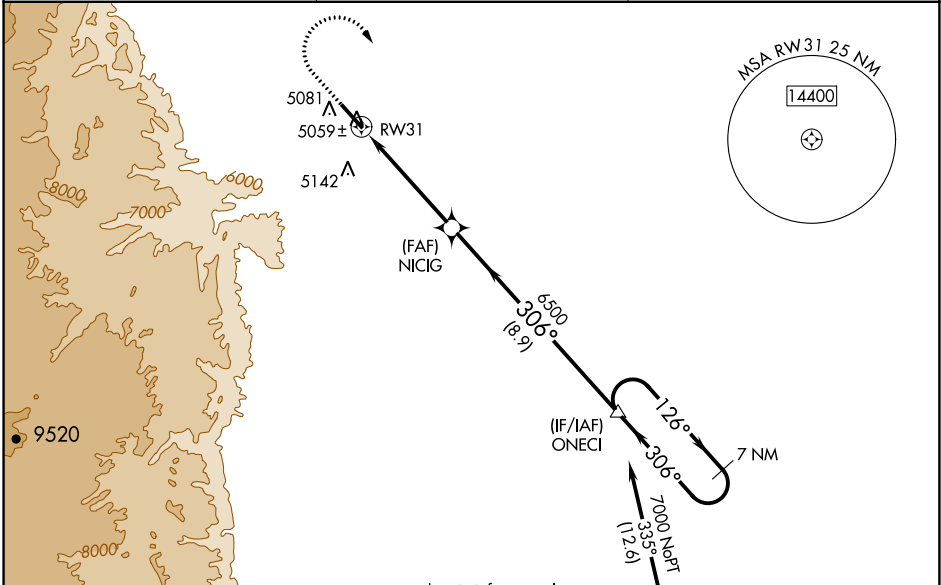
⚠ When Rwy 13 VGSI inop, Circling Rwy 13 NA at night. Baro-VNAV and VDP NA when using Sheridan altimeter setting. For uncompensated Baro-VNAV systems, LNAV/VNAV NA below -27°C (-16°F) or above 48°C (120°F). Circling NA southwest of Rwy 13-31. DME/DME RNP-0.3 NA. When local altimeter setting not received, use Sheridan altimeter setting and increase all DA/MDA 200 feet; increase all LPV, LNAV/VNAV, and all LNAV and Circling Cat C/D visibilities ¾ mile.

MISSED APPROACH: Climb to 6000, then climbing right turn to 7000 direct ONECI and hold.

ASOS
135.425

CASPER RADIO
122.025

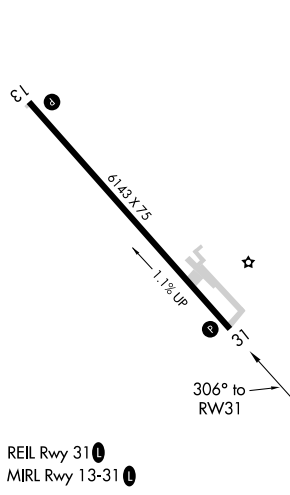
UNICOM
122.8 (CTAF) 0



Procedure NA for arrivals at CZI VOR/DME on airway radials 256 CW 048.

(IAF) CRAZY WOMAN CZI

ELEV 4970	TDZE 4940
-----------	-----------



REIL Rwy 31 0
MIRL Rwy 13-31 0

6000	7000	ONECI	VGSI and RNAV glidepath not coincident. (VGSI Angle GS 3.00/TCH 42)	7 NM Holding Pattern
↑	↷	△		
*LNAV only	*1.1 NM to RW31	NICIG	6500	126° → 7000
RW31			6500	← 306°
	1.1 NM	3.7 NM	8.9 NM	GP 3.00° TCH 51
CATEGORY	A	B	C	D
LPV DA		5190-¾	250 (300-¾)	
LNAV/VNAV DA		5275-1½	335 (400-1½)	
LNAV MDA	5320-1	380 (400-1)	5320-1½	380 (400-1½)
C CIRCLING	5440-1	470 (500-1)	5460-1½ 490 (500-1½)	5600-2 630 (700-2)

27 APR 2017 to 25 MAY 2017

27 APR 2017 to 25 MAY 2017

VOR/DME CZI 117.3 Chan 120	APP CRS 319°	Rwy Idg 6143 TDZE 4940 Apt Elev 4970
--	------------------------	---

VOR/DME RWY 31

JOHNSON COUNTY (BYG)

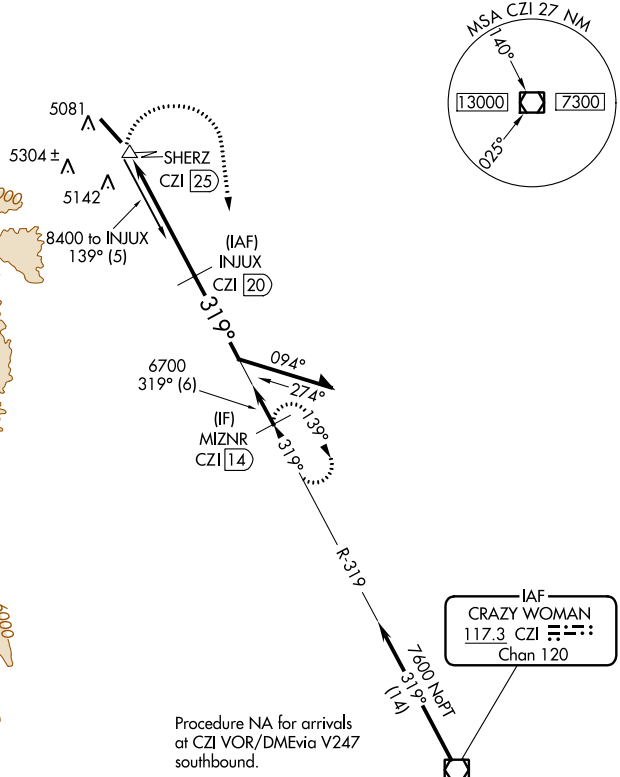
▼ Visibility reduction by helicopters NA. If local altimeter setting not received, use Sheridan altimeter setting and increase all MDAs 600 feet. When VGSI inoperative, procedure NA at night.

▲ MISSED APPROACH: Climbing right turn to 7600 via heading 160° and CZI VOR/DME R-319 to MIZNR/14 DME and hold.

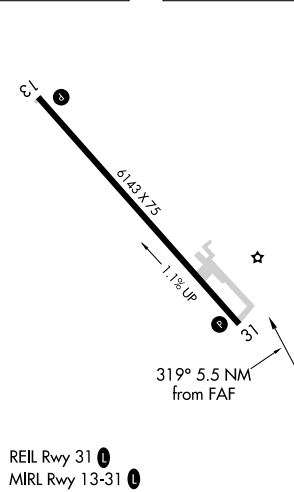
ASOS
135.425

CASPER RADIO
122.025

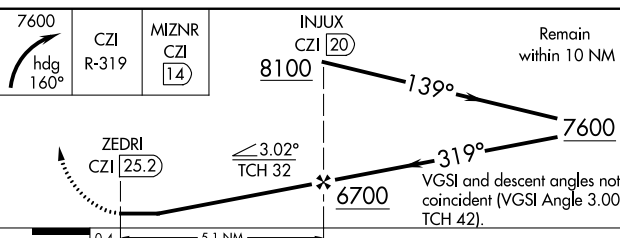
UNICOM
122.8 (CTAF) 0



ELEV 4970 TDZE 4940



REIL Rwy 31
MIRL Rwy 13-31



CATEGORY	A	B	C	D
S-31	5680-1 740 (800-1)	5680-1¼ 740 (800-1¼)	5680-2¼ 740 (800-2¼)	5680-2½ 740 (800-2½)
CIRCLING	5680-1 710 (800-1)	5680-1¼ 710 (800-1¼)	5680-2¼ 710 (800-2¼)	5680-2½ 710 (800-2½)

27 APR 2017 to 25 MAY 2017

27 APR 2017 to 25 MAY 2017