

LOC I-BTP 111.5	APP CRS 080°	Rwy Idg 4801
		TDZE 1246
		Apt Elev 1248

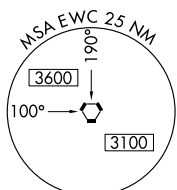
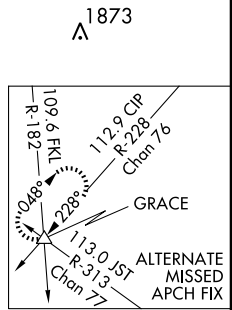
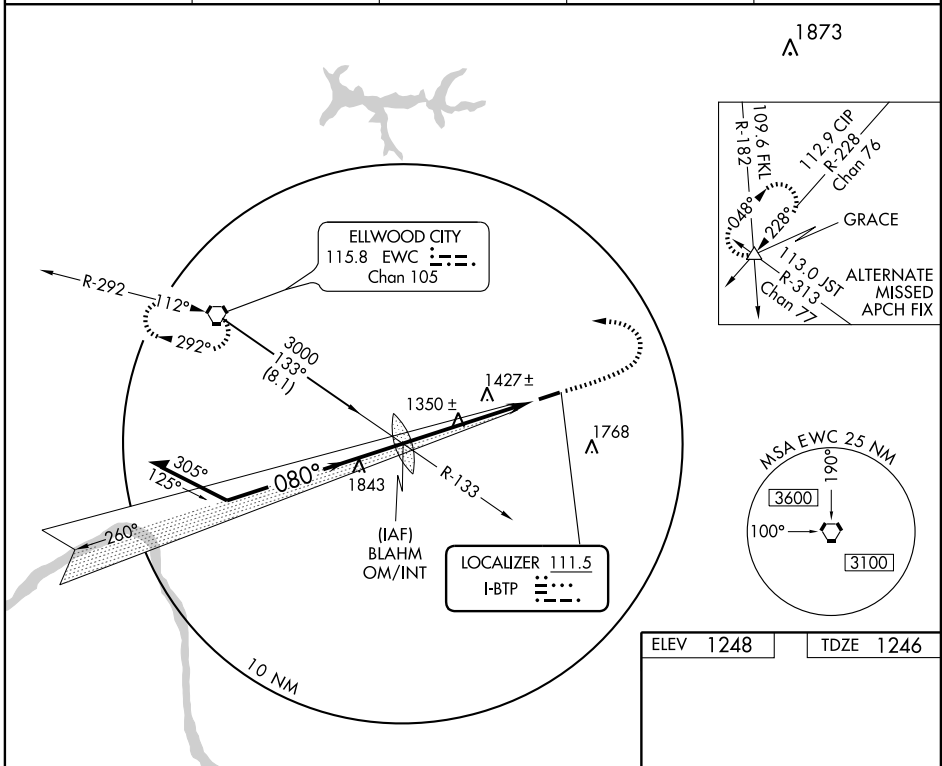
ILS or LOC RWY 8

BUTLER COUNTY / K W SCHOLTER FIELD (BTP)

⚠ Visibility reduction by helicopters NA. Inoperative table does not apply. When local altimeter setting not received, use Pittsburgh Intl altimeter setting and increase all DA/MDA 60 feet and S-LOC 8 Cats C/D visibility and Circling Cat C visibility ¼ mile. When VGSI inoperative, circling Rwy 26 NA at night.

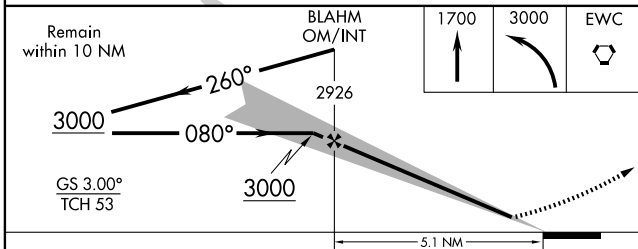
MALSF MISSED APPROACH: Climb to 1700, then climbing left turn to 3000 direct EWC VORTAC and hold.

AWOS-3 121.450	PITTSBURGH APP CON 124.75 338.2	CLNC DEL 128.7	UNICOM 123.05	CTAF 123.05
--------------------------	-------------------------------------------	--------------------------	-------------------------	-----------------------

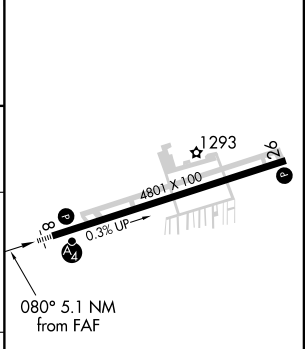


NE-4, 31 MAY 2012 to 28 JUN 2012

NE-4, 31 MAY 2012 to 28 JUN 2012



ELEV 1248	TDZE 1246
-----------	-----------



CATEGORY	A	B	C	D
S-ILS 8		1496-1	250 (300-1)	
S-LOC 8	1700-1	454 (500-1)	1700-1¼ 454 (500-1¼)	1700-1½ 454 (500-1½)
CIRCLING	1820-1	572 (600-1)	1820-1½ 572 (600-1½)	1820-2 572 (600-2)

REIL Rwy 26	
HIRL Rwy 8-26	
FAF to MAP 5.1 NM	
Knots	60 90 120 150 180
Min:Sec	5:06 3:24 2:33 2:02 1:42

ILS or LOC RWY 8

APP CRS	Rwy Idg	4801
260°	TDZE	1248
	Apt Elev	1248

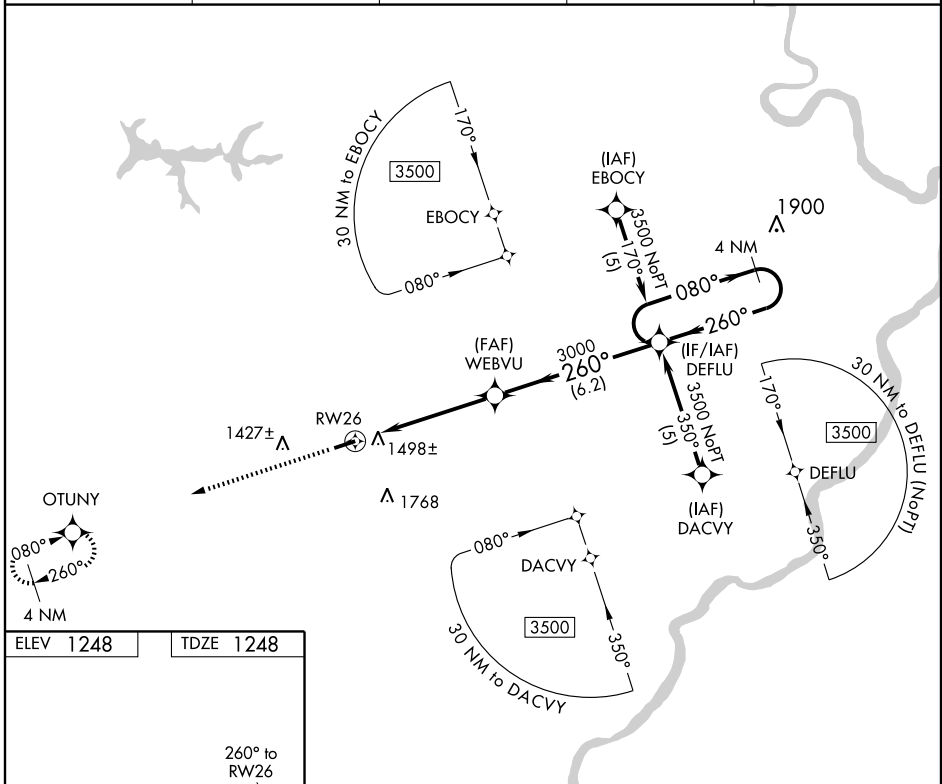
RNAV (GPS) RWY 26

BUTLER COUNTY / K W SCHOLTER FIELD (BTP)

⚠ DME/DME RNP-0.3 NA. Visibility reduction by helicopters NA. When local altimeter setting not received, use Pittsburgh Intl altimeter setting and increase all MDA 60 feet, increase Circling Cat C visibility ¼ mile. When VGSI inoperative, straight-in/circling Rwy 26 procedure NA at night.

⚠ MISSED APPROACH: Climb to 3000 direct OTUNY and hold.

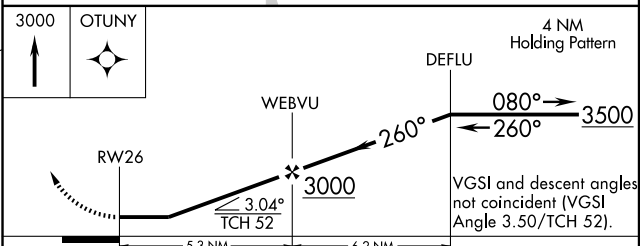
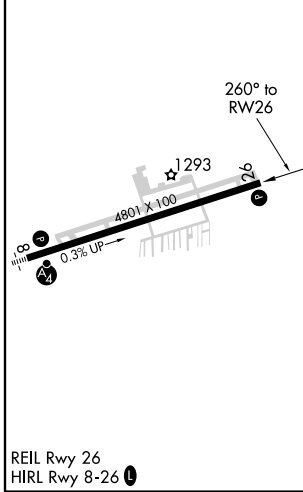
AWOS-3 121.450	PITTSBURGH APP CON 124.75 338.2	CLNC DEL 128.7	UNICOM 123.05	CTAF 123.05 ①
--------------------------	-------------------------------------------	--------------------------	-------------------------	--------------------------------



NE-4, 31 MAY 2012 to 28 JUN 2012

NE-4, 31 MAY 2012 to 28 JUN 2012

ELEV 1248	TDZE 1248
-----------	-----------



CATEGORY	A	B	C	D
LNAV MDA	1760-1	512 (600-1)	1760-1½ 512 (600-1½)	1760-1¾ 512 (600-1¾)
CIRCLING	1820-1	572 (600-1)	1820-1½ 572 (600-1½)	1820-2 572 (600-2)

WAAS CH 56502 W08A	APP CRS 080°	Rwy Idg 4801 TDZE 1246 Apt Elev 1248
----------------------------------------	------------------------	-----------------------------------------------------------------

RNAV (GPS) RWY 8

BUTLER COUNTY / K W SCHOLTER FIELD (BTP)

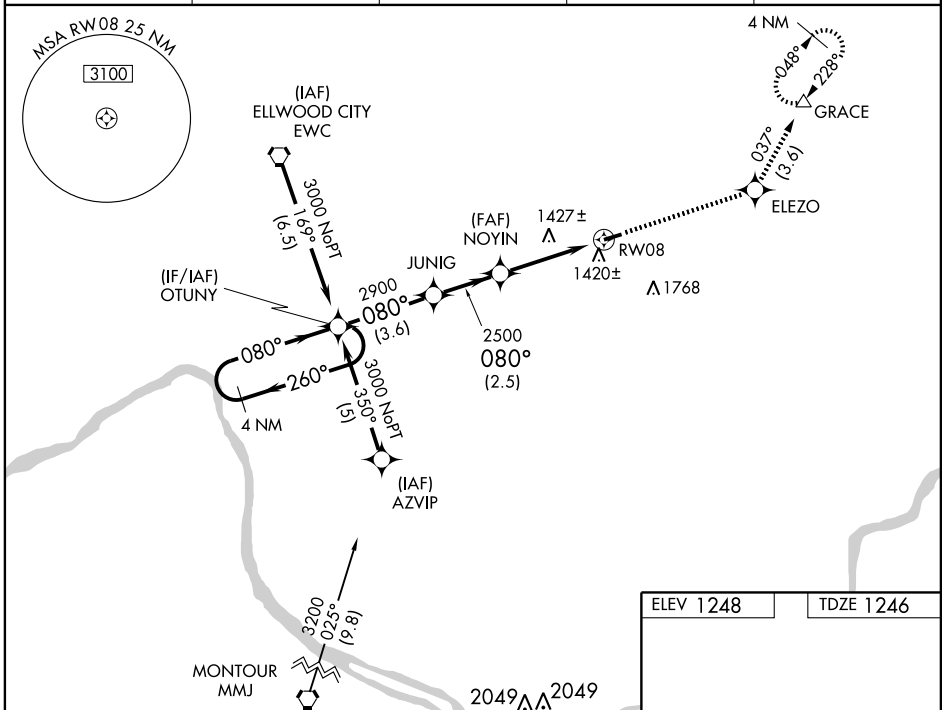
⚠ Visibility reduction by helicopters NA. DME/DME RNP-0.3 NA. Baro-VNAV NA when using Pittsburgh Intl altimeter setting. Inoperative table does not apply. When local altimeter setting not received, use Pittsburgh Intl altimeter setting and increase LPV DA to 1603 feet, LNAV/VNAV DA to 1705 feet; increase all MDA 60 feet, increase visibility LPV all Cats, LNAV/VNAV all Cats and Circling Cat C visibility 1/4 mile. For uncompensated Baro-VNAV systems, LNAV/VNAV NA below -17°C (2°F) or above 45°C (114°F). When VGSI inoperative, circling Rwy 26 NA at night.

MALSF



MISSED APPROACH:
Climb to 3000 direct ELEZO and via 037° track to GRACE and hold.

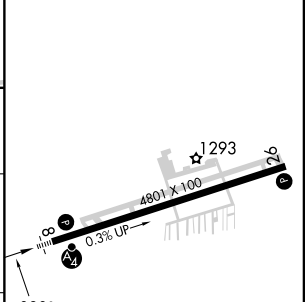
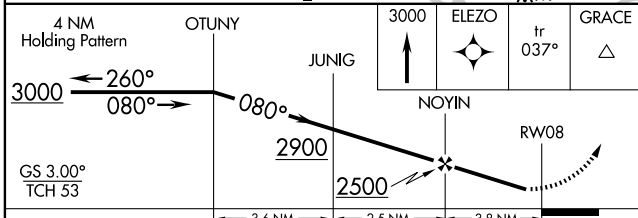
AWOS-3 121.450	PITTSBURGH APP CON 124.75 338.2	CLNC DEL 128.7	UNICOM 123.05	CTAF 123.05
--------------------------	-------------------------------------------	--------------------------	-------------------------	-----------------------



NE-4, 31 MAY 2012 to 28 JUN 2012

NE-4, 31 MAY 2012 to 28 JUN 2012

ELEV 1248	TDZE 1246
-----------	-----------



CATEGORY	A	B	C	D
LPV DA	1547-1		301 (300-1)	
LNAV/VNAV DA	1649-1½		403 (500-1½)	
LNAV MDA	1680-1	434 (500-1)	1680-1¼ 434 (500-1¼)	1680-1½ 434 (500-1½)
CIRCLING	1820-1	572 (600-1)	1820-1½ 572 (600-1½)	1820-2 572 (600-2)

REIL Rwy 26

HIRL Rwy 8-26

RNAV (GPS) RWY 8