

LOC I-BTP 111.5	APP CRS 080°	Rwy Idg 4801
		TDZE 1246
		Apt Elev 1248

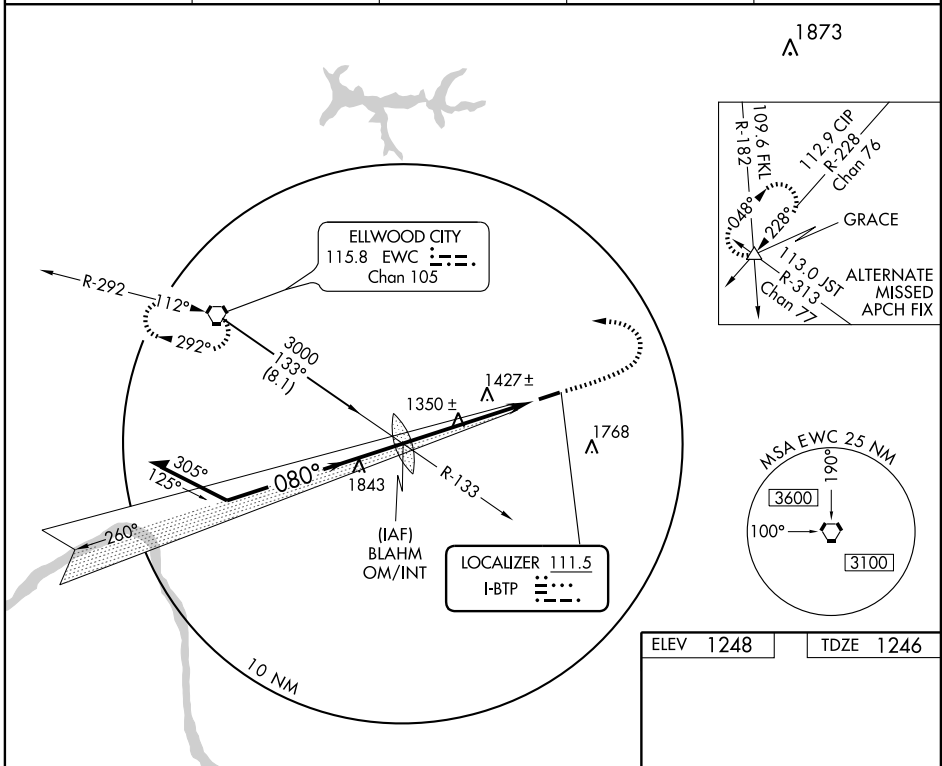
ILS or LOC RWY 8

BUTLER COUNTY / K W SCHOLTER FIELD (BTP)

⚠ Visibility reduction by helicopters NA. Inoperative table does not apply. When local altimeter setting not received, use Pittsburgh Intl altimeter setting and increase all DA/MDA 60 feet and S-LOC 8 Cats C/D visibility and Circling Cat C visibility ¼ mile. When VGSI inoperative, circling Rwy 26 NA at night.

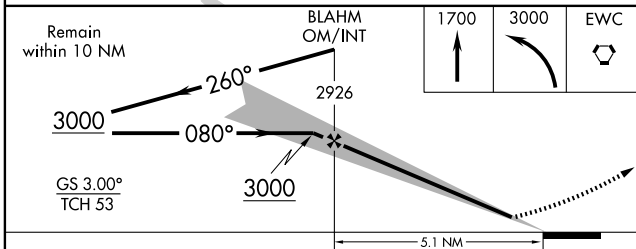
MALSF MISSED APPROACH: Climb to 1700, then climbing left turn to 3000 direct EWC VORTAC and hold.

AWOS-3 121.450	PITTSBURGH APP CON 124.75 338.2	CLNC DEL 128.7	UNICOM 123.05	CTAF 123.05
--------------------------	---	--------------------------	-------------------------	-----------------------

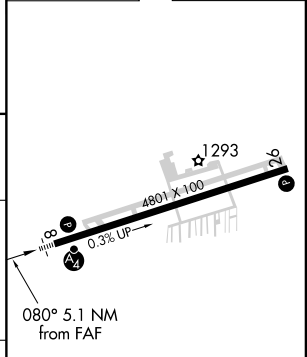


NE-4, 31 MAY 2012 to 28 JUN 2012

NE-4, 31 MAY 2012 to 28 JUN 2012



ELEV 1248	TDZE 1246
-----------	-----------



CATEGORY	A	B	C	D
S-ILS 8		1496-1	250 (300-1)	
S-LOC 8	1700-1	454 (500-1)	1700-1¼ 454 (500-1¼)	1700-1½ 454 (500-1½)
CIRCLING	1820-1	572 (600-1)	1820-1½ 572 (600-1½)	1820-2 572 (600-2)

REIL Rwy 26	
HIRL Rwy 8-26	
FAF to MAP 5.1 NM	
Knots	60 90 120 150 180
Min:Sec	5:06 3:24 2:33 2:02 1:42

ILS or LOC RWY 8

APP CRS	Rwy Idg	4801
260°	TDZE	1248
	Apt Elev	1248

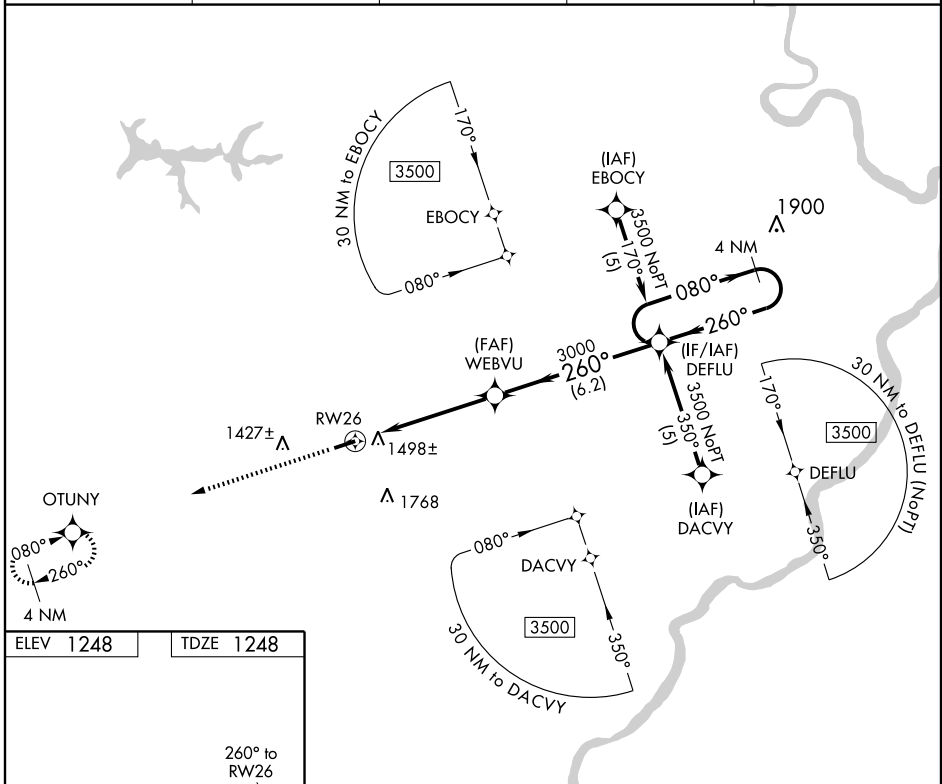
RNAV (GPS) RWY 26

BUTLER COUNTY / K W SCHOLTER FIELD (BTP)

⚠ DME/DME RNP-0.3 NA. Visibility reduction by helicopters NA. When local altimeter setting not received, use Pittsburgh Intl altimeter setting and increase all MDA 60 feet, increase Circling Cat C visibility ¼ mile. When VGSI inoperative, straight-in/circling Rwy 26 procedure NA at night.

⚠ MISSED APPROACH: Climb to 3000 direct OTUNY and hold.

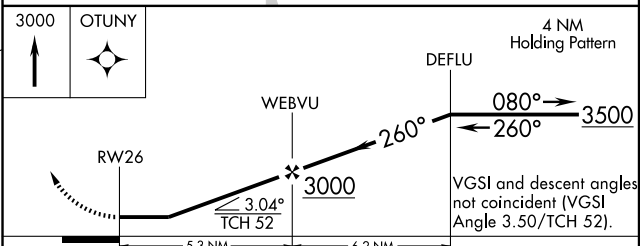
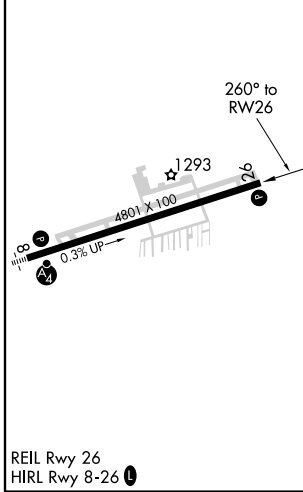
AWOS-3 121.450	PITTSBURGH APP CON 124.75 338.2	CLNC DEL 128.7	UNICOM 123.05	CTAF 123.05 ①
--------------------------	---	--------------------------	-------------------------	--------------------------------



NE-4, 31 MAY 2012 to 28 JUN 2012

NE-4, 31 MAY 2012 to 28 JUN 2012

ELEV 1248	TDZE 1248
-----------	-----------



CATEGORY	A	B	C	D
LNAV MDA	1760-1	512 (600-1)	1760-1½ 512 (600-1½)	1760-1¾ 512 (600-1¾)
CIRCLING	1820-1	572 (600-1)	1820-1½ 572 (600-1½)	1820-2 572 (600-2)

WAAS CH 56502 W08A	APP CRS 080°	Rwy Idg 4801 TDZE 1246 Apt Elev 1248
--	------------------------	---

RNAV (GPS) RWY 8

BUTLER COUNTY / K W SCHOLTER FIELD (BTP)

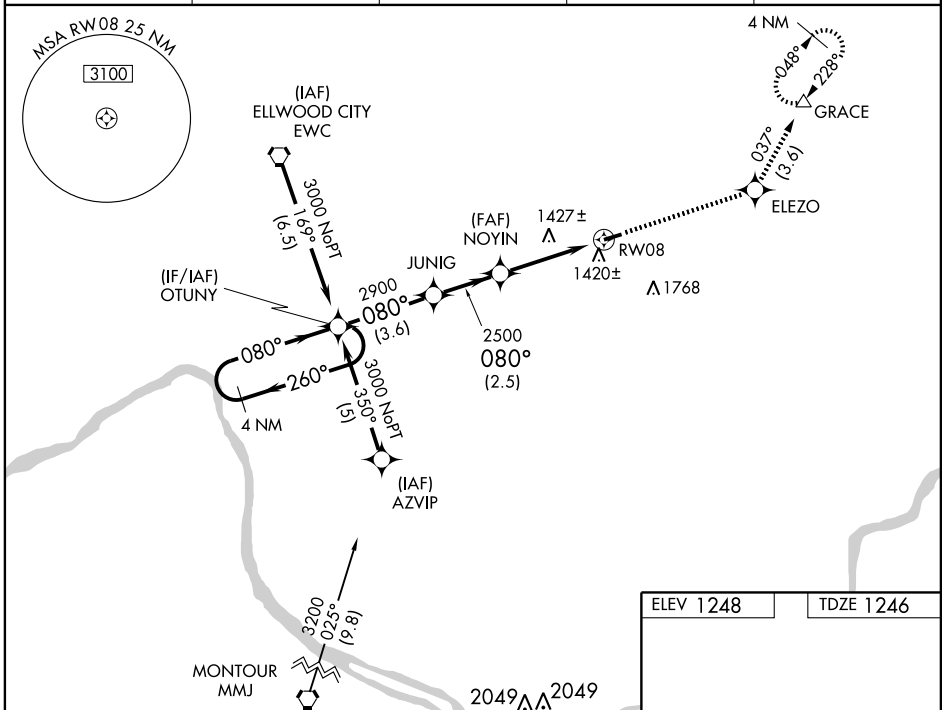
⚠ Visibility reduction by helicopters NA. DME/DME RNP-0.3 NA. Baro-VNAV NA when using Pittsburgh Intl altimeter setting. Inoperative table does not apply. When local altimeter setting not received, use Pittsburgh Intl altimeter setting and increase LPV DA to 1603 feet, LNAV/VNAV DA to 1705 feet; increase all MDA 60 feet, increase visibility LPV all Cats, LNAV/VNAV all Cats and Circling Cat C visibility 1/4 mile. For uncompensated Baro-VNAV systems, LNAV/VNAV NA below -17°C (2°F) or above 45°C (114°F). When VGSI inoperative, circling Rwy 26 NA at night.

MALSF



MISSED APPROACH:
Climb to 3000 direct ELEZO and via 037° track to GRACE and hold.

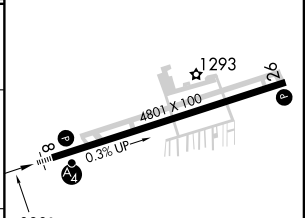
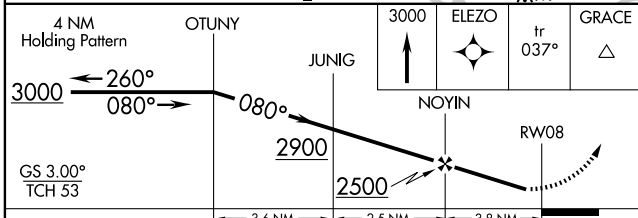
AWOS-3 121.450	PITTSBURGH APP CON 124.75 338.2	CLNC DEL 128.7	UNICOM 123.05	CTAF 123.05
--------------------------	---	--------------------------	-------------------------	-----------------------



NE-4, 31 MAY 2012 to 28 JUN 2012

NE-4, 31 MAY 2012 to 28 JUN 2012

ELEV 1248	TDZE 1246
-----------	-----------



CATEGORY	A	B	C	D
LPV DA	1547-1		301 (300-1)	
LNAV/VNAV DA	1649-1½		403 (500-1½)	
LNAV MDA	1680-1	434 (500-1)	1680-1¼ 434 (500-1¼)	1680-1½ 434 (500-1½)
CIRCLING	1820-1	572 (600-1)	1820-1½ 572 (600-1½)	1820-2 572 (600-2)

REIL Rwy 26
HIRL Rwy 8-26

RNAV (GPS) RWY 8

INSTRUMENT APPROACH PROCEDURE CHARTS

IFR ALTERNATE AIRPORT MINIMUMS

Standard alternate minimums for non precision approaches are 800-2 (NDB, VOR, LOC, TACAN, LDA, VORTAC, VOR/DME, ASR or WAAS LNAV); for precision approaches 600-2 (ILS or PAR). Airports within this geographical area that require alternate minimums other than standard or alternate minimums with restrictions are listed below. NA - means alternate minimums are not authorized due to unmonitored facility or absence of weather reporting service. Civil pilots see FAR 91. IFR Alternate Airport Minimums: Ceiling and Visibility Minimums not applicable to USA/USN/USAF. Pilots must review the IFR Alternate Airport Minimums Notes for alternate airfield suitability.

NAME ALTERNATE MINIMUMS**ALLENTOWN, PA**

LEHIGH VALLEY

INTL (ABE) **ILS or LOC Rwy 13¹**
RNAV (GPS) Rwy 31²
VOR-A³

¹ILS, Categories A,B,C, 700-2; Category D, 700-2½. LOC, Category D, 800-2½.

²Categories A,B, 900-2; Category C, 900-2¾, Category D, 900-3.

³NA when local weather not available.

ALLENTOWN QUEEN

CITY MUNI (XLL) **RNAV (GPS) Rwy 7**
VOR-B¹

NA when local weather not available

¹Categories A,B, 900-2; Category C, 900-2½.

ALTOONA, PA

ALTOONA-BLAIR

COUNTY (A00) **ILS or LOC Rwy 21¹**
RNAV (GPS) Rwy 3²
RNAV (GPS) Y Rwy 21³
VOR-A⁴

¹ILS, Category D, 1100-3. LOC, Category D, 1100-3.

²Categories A,B, 900-2; Category C 900-2½; Category D, 1200-3

³Category D, 1200-3.

⁴Categories A,B, 1000-2; Category C, 1000-2¾; Category D, 1200-3.

NAME ALTERNATE MINIMUMS**BECKLEY, WV**

RALEIGH COUNTY

MEMORIAL (BKW) **ILS or LOC Rwy 19^{1,2}**
RNAV (GPS) Rwy 1^{1,3}
RNAV (GPS) Rwy 10^{1,3}
RNAV (GPS) Rwy 19^{1,3}
RNAV (GPS) Rwy 28^{1,4}
VOR Rwy 10^{1,3}
VOR Rwy 19^{1,3}

¹NA when local weather not available.

²ILS, Categories A,B,C, 700-2; Category D, 700-2½. LOC, Category D, 800-2½.

³Category D, 800-2½.

⁴Categories A, B, 900-2; Category C, 900-2½; Category D, 900-2¾.

BLUEFIELD, WV

MERCER

COUNTY (BLF) **ILS or LOC Rwy 23¹**
RNAV (GPS) Rwy 5²
RNAV (GPS) Rwy 23³
VOR/DME Rwy 23²
VOR Rwy 23⁴

NA when local weather not available.

¹ILS, Categories A, B, 700-2; Category C, 800-2; Category D, 800-2½. LOC, Category D, 800-2½.

²Category D, 800-2½.

³Category C, 800-2½; Category D, 800-2½.

⁴Categories A, B, 1000-2; Category C, 1000-2¾; Category D, 1000-3.

BRADFORD, PA

BRADFORD

RGNL (BFD) **ILS or LOC Rwy 31¹**
RNAV (GPS) Rwy 14
RNAV (GPS) Rwy 32
VOR Rwy 14²
VOR/DME Rwy 14

NA when local weather not available.

¹NA when control tower closed.

²Category C, 800-2½; Category D, 800-2½.

31 MAY 2012 to 28 JUN 2012

31 MAY 2012 to 28 JUN 2012



ALTERNATE MINS

M2



NAME ALTERNATE MINIMUMS

BUCKHANNON, WV

UPSHUR COUNTY
RGNL (W22) RNAV (GPS) Rwy 11
RNAV (GPS) Rwy 29

NA when local weather not available.

BUTLER, PA

BUTLER COUNTY/K.W. SCHOLTER
FIELD (BTP) ILS or LOC Rwy 8
RNAV (GPS) Rwy 8
RNAV (GPS) Rwy 26

NA when local weather not available.

CHARLESTON, WV

YEAGER (CRW) ILS or LOC Rwy 5¹
ILS or LOC Rwy 23²
VOR-A³

¹ILS, Categories A, B, C, D, 700-2.

²ILS, Categories A, B, C, 700-2; Category D, 700-2¼. LOC, Category D, 800-2¼.

³Category D, 800-2¼.

CLARKSBURG, WV

NORTH CENTRAL
WEST VIRGINIA (CKB) ... ILS or LOC Rwy 21¹²
RNAV (GPS) Rwy 3³⁴
RNAV (GPS) Rwy 21³⁴
VOR-A³⁴

¹NA when control tower closed.

²ILS, Categories A, B, C, 800-2; Category D, 900-2¼. LOC, Category D, 900-2¼.

³NA when local weather not available.

⁴Category D, 900-2¼.

COATESVILLE, PA

CHESTER COUNTY
G O CARLSON (MQS) ILS or LOC Rwy 29
RNAV (GPS) Rwy 11
RNAV (GPS) Rwy 29

NA when local weather not available.

DOYLESTOWN, PA

DOYLESTOWN (DYL) RNAV (GPS) Rwy 5
RNAV (GPS) Rwy 23
VOR Rwy 23

NA when local weather not available.

DUBOIS, PA

DUBOIS RGNL (DUJ) ILS or LOC Rwy 25
RNAV (GPS) Rwy 7
RNAV (GPS) Rwy 25
VOR/DME Rwy 7

NA when local weather not available.

NAME ALTERNATE MINIMUMS

ELKINS, WV

ELKINS-RANDOLPH COUNTY JENNINGS-
RANDOLPH FIELD (EKN) LDA-C¹
RNAV (GPS)-A²³
RNAV (GPS) Rwy 5²⁴
RNAV (GPS) Rwy 14²⁵
RNAV (GPS) Rwy 23²⁶

¹Categories A, B, 1200-2; Category C, 1400-3; Category D, 1500-3.

²NA when local weather not available.

³Categories A, B, 1700-2; Category C, 1700-3.

⁴Categories A, B, 1100-2; Category C, 1300-3; Category D, 1400-3.

⁵Categories A, B, 1500-2; Categories C, D, 1500-3.

⁶Categories A, B, 1200-2; Category C, 1300-3; Category D, 1400-3.

ERIE, PA

ERIE INTL/TOM
RIDGE FIELD (ERI) ILS or LOC Rwy 6¹²
ILS or LOC/DME Rwy 24¹²
NDB Rwy 6²
NDB Rwy 24²
RNAV (GPS) Rwy 6
RNAV (GPS) Rwy 24
VOR Rwy 6
VOR/DME Rwy 24

NA when local weather not available.

¹ILS, 700-2.

²NA when control tower closed.

FRANKLIN, PA

VENANGO RGNL (FKL) ... ILS or LOC Rwy 21
RNAV (GPS) Rwy 3
RNAV (GPS) Rwy 21
VOR Rwy 3
VOR Rwy 21

NA when local weather not available.

HARRISBURG, PA

CAPITAL CITY (CXY) ILS or LOC Rwy 8¹²
RNAV (GPS) Rwy 8¹²
RNAV (GPS) Rwy 26³⁴

¹Categories A, 1000-2; Category B, 1400-2; Categories C, D, 1400-3.

²NA when control tower closed.

³NA when local weather not available.

⁴Category A, 1200-2, Category B, 1400-2; Categories C, D, 1400-3.

31 MAY 2012 to 28 JUN 2012

31 MAY 2012 to 28 JUN 2012



ALTERNATE MINS

M2

NE-4





ALTERNATE MINS

M4



NAME ALTERNATE MINIMUMS

MOUNT POCONO, PA

POCONO MOUNTAINS

- MUNI (MPO) RNAV (GPS) Rwy 5
- RNAV (GPS) Rwy 13
- RNAV (GPS) Rwy 31
- VOR Rwy 13

NA when local weather not available.

MUIR AAF (KMUI)

FORT INDIANTOWN

- GAP, PA NDB-A
- RNAV (GPS) -B
- COPTER NDB Y-289
- COPTER NDB Z-289
- COPTER RNAV (GPS) Rwy 25

NA when control tower closed.

PARKERSBURG, WV

MID-OHIO VALLEY

- AIRPORT (PKB) ILS or LOC Rwy 3¹
- RNAV (GPS) Rwy 3
- RNAV (GPS) Rwy 10²
- RNAV (GPS) Rwy 21
- RNAV (GPS) Rwy 28
- VOR Rwy 21

NA when local weather not available.

¹NA when control tower is closed.

²Category C, D, 800-2½.

PHILADELPHIA, PA

NORTHEAST

- PHILADELPHIA (PNE) ... ILS or LOC Rwy 24¹²
- LOC BC Rwy 6¹²
- RNAV (GPS) Rwy 6²
- RNAV (GPS) Rwy 15²
- RNAV (GPS) Rwy 24²
- RNAV (GPS) Rwy 33²
- VOR Rwy 6¹²
- VOR Rwy 24¹²

¹NA when control tower closed.

²NA when local weather not available.

NAME ALTERNATE MINIMUMS

PHILADELPHIA, PA (CONT)

PHILADELPHIA

- INTL (PHL) ILS PRM Rwy 27L¹
- ILS or LOC Rwy 9L²
- ILS Rwy 9R³
- ILS or LOC Rwy 17³
- ILS or LOC Rwy 26⁴
- ILS or LOC Rwy 27L⁵
- ILS or LOC/DME Rwy 27R⁶
- RNAV (GPS) Rwy 27R⁷

¹ILS, 700-2. LOC, NA.

²ILS, Categories A, B, 800-2; Category C, 800-2¼; Category D, 800-2½. LOC, Category C, 800-2¼; Category D, 800-2½.

³ILS, Categories A, B, C, 800-2; Category D, 800-2¼. LOC, Category D, 800-2¼.

⁴ILS, Categories A, B, C, 700-2.

⁵ILS, 700-2.

⁶ILS, Categories B, C, D, 700-2.

⁷Category D, 800-2¼.

- WINGS FIELD (LOM) RNAV (GPS) Rwy 6
- RNAV (GPS) Rwy 24

NA when local weather not available.

PITTSBURGH, PA

- ALLEGHENY COUNTY (AGC) VOR-A
- NA when local weather not available.

- PITTSBURGH INTL (PIT) . ILS or LOC Rwy 10L¹
- ILS or LOC Rwy 10R¹
- ILS or LOC Rwy 28L¹
- ILS or LOC Rwy 28R¹
- ILS or LOC Rwy 32¹
- RNAV (RNP) Z Rwy 10R²

¹ILS, Category E, 700-2¼. LOC, Category E, 800-2¼.

²Categories A, B, C, D, 800-2¼.

POINT PLEASANT, WV

- MASON COUNTY (3I2) RNAV (GPS) Rwy 7¹
- RNAV (GPS) Rwy 25²

NA when local weather not available.

¹Categories A,B,1300-2;Category C,D,1300-3.

²Category A,B,1100-2;Category C,D, 1100-3.

QUAKERTOWN, PA

- QUAKERTOWN (UKT) NDB Rwy 29
- RNAV (GPS) Rwy 11
- RNAV (GPS) Rwy 29

NA when local weather not available.

31 MAY 2012 to 28 JUN 2012

31 MAY 2012 to 28 JUN 2012



ALTERNATE MINS

M4

NE-4





ALTERNATE MINS

M5



NAME ALTERNATE MINIMUMS

READING, PA

READING RGNL/CARL A.

SPAATZ FIELD (RDG) ILS or LOC Rwy 13¹³

ILS or LOC Rwy 36¹³

RNAV (GPS) Rwy 13²

RNAV (GPS) Rwy 18²

RNAV (GPS) Rwy 36²

NA when local weather not available.

¹ILS, Categories A,B,C, 700-2; Category D, 800-2½. LOC, Category D, 800-2½.

²Category D, 800-2½.

³NA when control tower closed.

SELINGROVE, PA

PENN VALLEY (SEG) RNAV (GPS) Rwy 17
VOR-A

NA when local weather not available.

Categories A, B, 1000-2.

STATE COLLEGE, PA

UNIVERSITY
PARK (UNV) ILS or LOC Rwy 24
RNAV (GPS) Rwy 6
RNAV (GPS) Rwy 24
VOR-B¹

NA when local weather not available.

¹Categories A, B, 1500-2; Categories C, D, 1500-3.

SUTTON, WV

BRAXTON
COUNTY (48I) RNAV (GPS) Rwy 1¹
RNAV (GPS) Rwy 19²

NA when local weather not available.

¹Categories A,B, 1000-2; Category C, 1000-2½.

²Category B, 900-2; Category C 1000-2½.

WASHINGTON, PA

WASHINGTON
COUNTY (AFJ) ILS OR LOC Rwy 27³
RNAV (GPS) Rwy 9¹
RNAV (GPS) Rwy 27²

NA when local weather not available.

¹Category D, 900-2½.

²Category C, 800-2½, Category D, 900-2½.

³ILS, Categories A,B, 800-2; Category C, 800-2½; Category D, 900-3. LOC, Category C, 800-2½; Category D 900-3.

NAME ALTERNATE MINIMUMS

WHEELING, WV

WHEELING OHIO

COUNTY (HLG) ILS or LOC Rwy 3¹

RNAV (GPS) Rwy 3

RNAV (GPS) Rwy 16

RNAV (GPS) Rwy 21

RNAV (GPS) Rwy 34

VOR Rwy 21

Category D, 800-2½.

NA when local weather not available.

¹NA when control tower closed.

WILKES-BARRE-SCRANTON, PA

WILKES-BARRE-SCRANTON

INTL (AVP) ILS or LOC/DME Rwy 4
ILS or LOC/DME Rwy 22

RNAV (GPS) Rwy 4

RNAV (GPS) Rwy 22

Category A, 900-2; Category B, 1000-2;

Category C, 1000-3; Category D, 1300-3.

WILLIAMSPORT, PA

WILLIAMSPORT

RGNL (IPT) RNAV (GPS) Rwy 9¹
RNAV (GPS) Rwy 12²
RNAV (GPS) Rwy 30³

¹Categories A,B, 1500-2; Category C, 1500-3.

²Category B, 900-2.

³Categories A,B, 1500-2.

YORK, PA

YORK (THV) NDB Rwy 17
RNAV (GPS) Rwy 17
RNAV (GPS) Rwy 35

NA when local weather not available.

Category C, 800-2½; Category D, 800-2½.

31 MAY 2012 to 28 JUN 2012

31 MAY 2012 to 28 JUN 2012



ALTERNATE MINS

M5

NE-4



TAKE-OFF MINIMUMS AND (OBSTACLE) DEPARTURE PROCEDURES

12152 INSTRUMENT APPROACH PROCEDURE CHARTS IFR TAKE-OFF MINIMUMS AND (OBSTACLE) DEPARTURE PROCEDURES

Civil Airports and Selected Military Airports

ALL USERS: Airports that have Departure Procedures (DPs) designed specifically to assist pilots in avoiding obstacles during the climb to the minimum enroute altitude, and/or airports that have civil IFR take-off minimums other than standard, are listed below. Take-off Minimums and Departure Procedures apply to all runways unless otherwise specified. Altitudes, unless otherwise indicated, are minimum altitudes in MSL.

DPs specifically designed for obstacle avoidance are referred to as Obstacle Departure Procedures (ODPs) and are described below in text, or published separately as a graphic procedure. If the (Obstacle) DP is published as a graphic procedure, its name will be listed below, and it can be found in either this volume (civil), or the applicable military volume, as appropriate. Users will recognize graphic obstacle DPs by the term "(OBSTACLE)" included in the procedure title; e.g., TETON TWO (OBSTACLE). If not specifically assigned a departure procedure (i.e., ODP, SID, or radar vector) as part of an IFR clearance, an ODP may be required to be flown for obstacle clearance, even though not specifically stated in the IFR clearance. When doing so in this manner, ATC should be informed when the ODP being used contains a specified route to be flown, restrictions before turning, and/or altitude restrictions.

Graphic DPs designed by ATC to standardize traffic flows, ensure aircraft separation and enhance capacity are referred to as "Standard Instrument Departures (SIDs)". SIDs also provide obstacle clearance and are published under the appropriate airport section. ATC clearance must be received prior to flying a SID.

CIVIL USERS NOTE: Title 14 Code of Federal Regulations Part 91 prescribes standard take-off rules and establishes take-off minimums for certain operators as follows: (1) Aircraft having two engines or less - one statute mile. (2) Aircraft having more than two engines - one-half statute mile. These standard minima apply in the absence of any different minima listed below.

MILITARY USERS NOTE: Civil (nonstandard) take-off minima are published below. For military take-off minima, refer to appropriate service directives.

NAME TAKE-OFF MINIMUMS

ALLENTOWN, PA

ALLENTOWN QUEEN CITY MUNI (XLL)

AMDT 3 11069 (FAA)

TAKE-OFF MINIMUMS: **Rwy 7**, std. w/min. climb of 380' per NM to 2600 or 1600-2½ for climb in visual conditions. **Rwy 15**, NA.

DEPARTURE PROCEDURE: **Rwy 7**, climb heading 070° to 1800 before turning right, or for climb in visual conditions: cross Allentown Queen City Muni Airport at or above 1900 before proceeding on course. **Rwy 25**, climbing right turn direct ETX VOR/DME. **Rwy 33**, climbing left turn direct ETX VOR/DME.

NOTE: **Rwy 7**, poles beginning 55' from DER, 322' right of centerline, up to 25' AGL/415' MSL. **Rwy 25**, fence, trees, and poles beginning 56' from DER, 47' left of centerline, up to 100' AGL/529' MSL. Trees beginning 294' from DER, 78' right of centerline, up to 100' AGL/452' MSL.

LEHIGH VALLEY INTL

TAKE-OFF MINIMUMS: **Rwy 13**, 800-1 or std. with a min. climb of 270' per NM to 1600'.

DEPARTURE PROCEDURE: **Rwy 13**, climb runway heading to 1600 before proceeding on course. **Rwy 24**, climb runway heading to 1600 before proceeding southbound on course.

NAME TAKE-OFF MINIMUMS

ALTOONA, PA

ALTOONA-BLAIR COUNTY (AOO)

AMDT 4 11181 (FAA)

TAKE-OFF MINIMUMS: **Rwy 3**, 300-1½ or std. w/min. climb of 265' per NM to 1900. **Rwy 12**, NA-obstacles. **Rwy 21**, std. w/min. climb of 350' per NM to 3200 or 1600-3 for climb in visual conditions. **Rwy 30**, std. w/min. climb of 230' per NM to 3600 or 1600-3 for climb in visual conditions. Note: climb in visual conditions not authorized at night.

DEPARTURE PROCEDURE: **Rwy 3**, climb direct AOO VOR, then via AOO R-026 to 2800 before proceeding on course. **Rwy 21**, climb heading 203° and AOO R-206 to 3200 before proceeding on course. For climb in visual conditions, cross Altoona-Blair County Airport at or above 3000 before proceeding on course. **Rwy 30**, climb via heading 298° to 3600 before proceeding on course. For climb in visual conditions, cross Altoona Blair County Airport at or above 3000 before proceeding on course.

NOTE: **Rwy 3**, trees 61' from DER, 450' left of centerline, 100' AGL/1476' MSL. Trees 1538' from DER, 906' left of centerline, 100' AGL/1541' MSL. Trees 6978' from DER, 1129' right of centerline, 100' AGL/1646' MSL. **Rwy 21**, trees 2538' from DER, 366' left of centerline, 100' AGL/1595' MSL. Trees 2340' from DER, 706' right of centerline, 100' AGL/1619' MSL. **Rwy 30**, trees 85' from DER, 258' right of centerline, 100' AGL/1480' MSL.

31 MAY 2012 to 28 JUN 2012

31 MAY 2012 to 28 JUN 2012

TAKE-OFF MINIMUMS AND (OBSTACLE) DEPARTURE PROCEDURES

12152

BEAVER FALLS, PA

BEAVER COUNTY (BVI)

AMDT 2 11069 (FAA)

NOTE: **Rwy 10**, trees beginning 67' from DER, left and right of centerline, up to 64' AGL/1317' MSL. Fences beginning 124' from DER, 392' left of centerline, up to 10' AGL/1273' MSL. Bush 326' from DER, 136' right of centerline, 17' AGL/1270' MSL. Obstruction light on localizer 398' from DER, on centerline, 10' AGL/1263' MSL. **Rwy 28**, trees beginning 35' from DER, left and right of centerline, up to 100' AGL/1319' MSL. Vegetation beginning 4' from DER, left and right of centerline, up to 33' AGL/1212' MSL. Bush 173' from DER, 163' right of centerline, 34' AGL/1213' MSL.

BECKLEY, WV

RALEIGH COUNTY MEMORIAL (BKW)

AMDT 5 11321 (FAA)

TAKE-OFF MINIMUMS: **Rwy 10**, 400-2¼ w/min. climb of 350' per NM to 3400, or 1100-3 for climb in visual conditions. **Rwy 28**, 300-1¼ or std. w/min. climb of 261' per NM to 4000.

DEPARTURE PROCEDURE: **Rwy 1**, climbing left turn heading 350° to 4400 before proceeding on course.

Rwy 10, climbing left turn heading 350° to 4700 before proceeding on course, or for climb in visual conditions: cross Raleigh County Memorial at or above 3500 before proceeding on course. **Rwy 19**, climbing right turn heading 330° to 4400 before proceeding on course. **Rwy 28**, climbing right turn heading 320° to 4400 before proceeding on course.

NOTE: **Rwy 1**, trees and terrain beginning 26' from DER, left and right of centerline, up to 100' AGL/2524' MSL. Pole 718' from DER, 585' right of centerline, 2467' MSL. **Rwy 10**, trees and terrain beginning 22' from DER, left and right of centerline, up to 100' AGL/2651' MSL. Bush 32' from DER, 159' right of centerline, 20' AGL/2514' MSL. Pole 118' from DER, 234' left of centerline, 26' AGL/2510' MSL. **Rwy 19**, trees and terrain beginning 121' from DER, left and right of centerline, up to 100' AGL/2635' MSL. **Rwy 28**, trees and bushes beginning 5' from DER, left and right of centerline, up to 100' AGL/2521' MSL.

BEDFORD, PA

BEDFORD COUNTY (HMZ)

AMDT 1 11097 (FAA)

TAKE-OFF MINIMUMS: **Rwy 14**, std. w/min. climb of 549' per NM to 2300 or 300-1 w/min. climb of 369' per NM to 2600 or 2200-3 for climb in visual conditions.

Rwy 32, std. w/min. climb of 403' per NM to 2500 or 500-2½ w/min. climb of 301' per NM to 3700 or 2200-3 for climb in visual conditions.

DEPARTURE PROCEDURE: **Rwy 14**, climb heading 137° to 2800 before proceeding on course. For climb in visual conditions: cross Bedford County Airport at or above 3200' MSL before proceeding on course.

Rwy 32, climb heading 317° to 2600 before proceeding on course. For climb in visual conditions: cross Bedford County airport at or above 3200' MSL before proceeding on course.

NOTE: **Rwy 14**, terrain, fence, vehicles on road, and trees beginning 33' from DER, 483' right of centerline, up to 44' AGL/1193' MSL. Trees 3794' from DER, 1468' left of centerline, up to 70' AGL/1429' MSL. Trees 4967' from DER, 1607' right of centerline, up to 97' AGL/1376' MSL. **Rwy 32**, terrain, bush, and trees beginning 22' from DER, 383' left of centerline, up to 88' AGL/1307' MSL. Trees 3377' from DER, 1253' left of centerline, up to 71' AGL/1330' MSL. Trees 1.7 NM from DER, 3309' left of centerline, up to 65' AGL/1564' MSL. Trees 1.9 NM from DER, 2221' left of centerline, up to 67' AGL/1476' MSL.

BELLEFONTE, PA

BELLEFONTE

TAKE-OFF MINIMUMS: **Rwys 7, 25** 1000-2.

DEPARTURE PROCEDURE: **Rwy 7**, climb to 2600 on heading 075° before proceeding on course.

Rwy 25, climb to 2600 on heading 235° before proceeding on course.

BERKELEY SPRINGS, WV

POTOMAC AIRPARK

TAKE-OFF MINIMUMS: **Rwys 11, 29**, 1900-2 or std. with a min. climb of 400' per NM to 2600.

DEPARTURE PROCEDURE: **Rwy 11**, climb to 4000 via heading 095° and HGR R-275 to HGR VOR before proceeding on course. **Rwy 29**, climb to 1500 then climbing left turn to 5000 via heading 267° and GRV R-092 before proceeding on course.

BLOOMSBURG, PA

BLOOMSBURG MUNI (N13)

AMDT 1 12096 (FAA)

TAKE-OFF MINIMUMS: **Rwy 8**, 700-1½ or std. w/min. climb of 460' per NM to 1000. **Rwy 26**, 400-2¼ or std. w/min. climb of 300' per NM to 1000.

DEPARTURE PROCEDURE: **Rwy 8**, climb heading 067° to 2200 before proceeding on course. **Rwy 26**, climb heading 247° to 2200 before proceeding on course.

NOTE: **Rwy 8**, trees beginning 5242' from DER, 1861' right of centerline, up to 100' AGL/719' MSL. **Rwy 26**, tower 4500' from DER, 900' right of centerline, 150' AGL/632' MSL. Stack 5143' from DER, 1020' right of centerline, 175' AGL/661' MSL.

31 MAY 2012 to 28 JUN 2012

31 MAY 2012 to 28 JUN 2012

12152

TAKE-OFF MINIMUMS AND (OBSTACLE) DEPARTURE PROCEDURES



12152

BLUEFIELD, WV

MERCER COUNTY (BLF)

AMDT 4 09015 (FAA)

TAKE-OFF MINIMUMS: **Rwy 23**, 400-2¼ or std. with a min. climb of 238' per NM to 3300.

DEPARTURE PROCEDURE: **Rwy 5**, climb heading 049° to 3900 before turning south. **Rwy 23**, climbing right turn via BLF R-270 to 4500 before proceeding on course.

NOTE: **Rwy 5**, trees beginning 14' from departure end of runway, 370' left of centerline, up to 100' AGL/2939' MSL. Trees beginning 15' from departure end of runway, 391' right of centerline, up to 100' AGL/2959' MSL. **Rwy 23**, trees beginning at departure end of runway, 258' left of centerline, up to 100' AGL/2939' MSL. Trees beginning 140' from departure end of runway, 74' right of centerline, up to 100' AGL/3159' MSL.

BRADFORD, PA

BRADFORD RGNL

NOTE: **Rwy 5**, fence 448' from departure end of runway, 305' left of centerline, 19' AGL/2158' MSL. Fence 462' from departure end of runway, 299' right of centerline, 19' AGL/2158' MSL. Trees beginning 234' from departure end of runway, 70' left of centerline, up to 75' AGL/2242' MSL. Trees beginning 67' from departure end of runway, 227' right of centerline, up to 87' AGL/2226' MSL. **Rwy 14**, trees beginning 26' from departure end of runway, 263' left of centerline, up to 16' AGL/2115' MSL. Tree 2427' from departure end of runway, 918' right of centerline, 79' AGL/2198' MSL. **Rwy 23**, trees beginning 53' from departure end of runway, 145' left of centerline, up to 82' AGL/2240' MSL. Trees beginning 272' from departure end of runway, 220' right of centerline, up to 86' AGL/2225' MSL. **Rwy 32**, trees beginning 1018' from departure end of runway, 399' left of centerline, up to 102' AGL/2169' MSL. Trees beginning 138' from departure end of runway, 292' right of centerline, up to 86' AGL/2205' MSL.

BUCKHANNON, WV

UPSHUR COUNTY RGNL

TAKE-OFF MINIMUMS: **Rwy 29**, 400-1¼ or std. with a min. climb of 420' per NM to 2100.

DEPARTURE PROCEDURE: **Rwy 11**, climb via heading 105° to 2300 before proceeding on course.

NOTE: **Rwy 11**, trees 798' from departure end of runway, 179' right of centerline, 100' AGL/1679' MSL. Trees 2665' from departure end of runway, 842' left of centerline, 100' AGL/1719' MSL. Trees 4799' from departure end of runway, 1724' right of centerline, 100' AGL/1779' MSL. **Rwy 29**, trees 1 NM from departure end of runway, 565' right of centerline, 100' AGL/1959' MSL.

BUTLER, PA

BUTLER COUNTY/K.W. SCHOLTER FIELD

(BTP)

AMDT 3 10266 (FAA)

TAKE-OFF MINIMUMS: **Rwy 8**, 300-1 or std. w/ min. climb of 447' per NM to 1600.

NOTE: **Rwy 8**, pole and trees beginning 15' from DER, 4' left of centerline, up to 97' AGL/1346' MSL. Pole and trees beginning 18' from DER, 10' right of centerline, up to 95' AGL/1394' MSL. Trees 4254' from DER, 1555' right of centerline, up to 129' AGL/1488' MSL. **Rwy 26**, poles and trees beginning 1001' from DER, 282' left of centerline, up to 91' AGL/1310' MSL. Trees beginning 1638' from DER, 32' right of centerline, up to 95' AGL/1314' MSL.

CARLISLE, PA

CARLISLE (N94)

AMDT 1 12096 (FAA)

DEPARTURE PROCEDURE: **Rwy 10**, climb heading 102° to 1400 before proceeding on course. **Rwy 28**, climb heading 282° to 1900 before proceeding on course.

NOTE: **Rwy 10**, vehicle on road, 192' from DER, 42' left of centerline, up to 15' AGL/535' MSL. Pole, 196' from DER, 117' left of centerline, 30' AGL/550' MSL. Trees beginning 1700' from DER, on centerline, up to 100' AGL/671' MSL. Building 351' from DER, 121' left of centerline, 25' AGL/535' MSL. Pole, 361' from DER, 181' right of centerline, 30' AGL/540' MSL. **Rwy 28**, trees, 28' from DER, 256' right of centerline, up to 100' AGL/619' MSL. Trees, 4103' from DER, 287' right of centerline, up to 100' AGL/619' MSL. Trees, 4537' from DER, 391' left of centerline, up to 100' AGL/629' MSL.

CHAMBERSBURG, PA

FRANKLIN COUNTY RGNL

TAKE-OFF MINIMUMS: **Rwy 24**, 700-1 or std. with a min. climb of 220' per NM to 1400.

DEPARTURE PROCEDURE: **Rwys 6, 24**, climbing left turn to 4000 outbound via HGR VOR R-037 before proceeding on course.

CHARLESTON, WV

YEAGER (CRW)

AMDT 8A 11125 (FAA)

TAKE-OFF MINIMUMS: **Rwy 5**, 400-2¼ or std. w/ min. climb of 240' per NM to 1400. **Rwy 23**, 300-1 or std. w/ min. climb of 399' per NM to 1400.

DEPARTURE PROCEDURE: **Rwy 23**, climb heading 233° to 1400 before turning left.

NOTE: **Rwy 5**, trees beginning 3783' from DER, 734' left of centerline, up to 100' AGL/1019' MSL. Trees beginning 4349' from DER, 1057' right of centerline, up to 100' AGL/1062' MSL. Trees and tower 1.8 NM from DER, 467' left of centerline, up to 184' AGL/1235' MSL.

Rwy 23, Obstruction light on pole 4072' from DER, 875' left of centerline, 30' AGL/1150' MSL.

31 MAY 2012 to 28 JUN 2012

31 MAY 2012 to 28 JUN 2012

12152



NE-4

TAKE-OFF MINIMUMS AND (OBSTACLE) DEPARTURE PROCEDURES

12152

CLARION, PA

CLARION COUNTY

TAKE-OFF MINIMUMS: **Rwy 24**, 200-1½ or std. w/min. climb of 211' per NM to 1700.

NOTE: **Rwy 6**, multiple trees beginning 697' from departure end of runway, 311' left of centerline, up to 100' AGL/1519' MSL. Multiple trees beginning 1006' from departure end of runway, 47' right of centerline, up to 100' AGL/1529' MSL. Building 2942' from departure end of runway, 964' right of centerline, 60' AGL/1539' MSL. **Rwy 24**, multiple trees beginning 792' from departure end of runway, 27' left of centerline, up to 100' AGL/1539' MSL. Multiple trees beginning 806' from departure end of runway, 147' right of centerline, up to 100' AGL/1539' MSL. Tree 1.1 NM from departure end of runway, 2010' right of centerline, 100' AGL/1619' MSL.

CLARKSBURG, WV

NORTH CENTRAL WEST VIRGINIA (CKB)

AMDT 5 09295 (FAA)

TAKE-OFF MINIMUMS: **Rwy 3**, 300-2 or std. w/a min. climb of 416' per NM to 1600. **Rwy 21**, 400-2½ or std. w/min. climb of 467' per NM to 1600.

DEPARTURE PROCEDURE: **Rwy 3**, climb heading 031° to 2000 before proceeding on course. **Rwy 21**, climb heading 211° to 1800 before proceeding on course.

NOTE: **Rwy 3**, fence 3675' from DER, 754' right of centerline, 10' AGL/1316' MSL. Terrain and trees beginning 3728' from DER, 716' right of centerline, up to 97' AGL/1436' MSL. Trees beginning 5700' from DER, 1450' left of centerline, up to 101' AGL/1440' MSL. Terrain and trees beginning 6774' from DER, 1612' right of centerline, up to 99' AGL/1458' MSL. Terrain and trees beginning 7093' from DER, left and right of centerline, up to 62' AGL/1441' MSL. Fence 7738' from DER, 58' left of centerline, 10' AGL/1419' MSL. **Rwy 21**, trees 4514' from DER, 1113' right of centerline, 100' AGL/1449' MSL. Trees beginning 6' from DER, 307' right of centerline, up to 100' AGL/1279' MSL. Bushes and trees beginning 11' from DER, 258' left of centerline, up to 77' AGL/1226' MSL. Trees beginning 3199' from DER, 657' right of centerline, up to 100' AGL/1499' MSL. Trees beginning 5512' from DER, 576' left of centerline, up to 93' AGL/1512' MSL. Trees beginning 2.1 miles from DER, 2069' right of centerline, up to 117' AGL/1496' MSL.

CLEARFIELD, PA

CLEARFIELD-LAWRENCE

TAKE-OFF MINIMUMS: **Rwy 12**, 600-2 or std. with a min climb of 240' per NM to 2200'. **Rwy 30**, 1500-3 or std. with a min. climb of 340' per NM to 3300.

NOTE: **Rwy 12**, cross departure end of runway at or above 35' AGL/1548' MSL. **Rwy 30**, cross departure end of runway at or above 35' AGL/1550' MSL.

COATESVILLE, PA

CHESTER COUNTY G. O. CARLSON (MQS) ORIG 08213 (FAA)

NOTE: **Rwy 11**, tree 342' from departure end of runway, 592' right of centerline, 90' AGL/680' MSL. Trees beginning 1135' from departure end of runway, 549' left of centerline, up to 87' AGL/696' MSL. **Rwy 29**, tree 281' from departure end of runway, 325' left of centerline, 7' AGL/646' MSL. Obstruction light on poles beginning 418' from departure end of runway, 308' right of centerline, up to 40' AGL/690' MSL. Antenna on buildings beginning 506' from departure end of runway, 208' right of centerline, up to 23' AGL/692' MSL. Trees beginning 1048' from departure end of runway, 277' right of centerline, up to 62' AGL/731' MSL. Multiple poles beginning 1723' from departure end of runway, 238' right of centerline, up to 34' AGL/703' MSL.

COLLEGEVILLE, PA

PERKIOMEN VALLEY (N10)

ORIG-A 10014 (FAA)

TAKE-OFF MINIMUMS: Procedure NA at night.
NOTE: **Rwy 9**, multiple trees beginning 386' from DER, 91' right of centerline, up to 100' AGL/369' MSL. Multiple trees beginning 923' from DER, 342' left of centerline, up to 100' AGL/369' MSL. Powerlines 4412' from DER, 98' left of centerline, up to 150' AGL/400' MSL. **Rwy 27**, multiple trees beginning 104' from DER, 45' right of centerline, up to 100' AGL/329' MSL. Multiple trees beginning 212' from DER, 42' left of centerline, up to 100' AGL/317' MSL.

CONNELLSVILLE, PA

JOSEPH A. HARDY CONNELLSVILLE

TAKE-OFF MINIMUMS: **Rwy 14**, 1100-2. Night NA.
DEPARTURE PROCEDURE: **Rwys 5,23,32**, climb runway heading to 3000 before proceeding on course.
Rwy 14, climbing left turn as soon as practicable after take-off to 4000 via IHD R-273 before proceeding on course.

CORRY, PA

CORRY-LAWRENCE (8G2)

ORIG-A 11125 (FAA)

NOTE: **Rwy 14**, terrain, tank, pole, and trees beginning 54' from DER, 300' left of centerline, up to 66' AGL/1835' MSL. Pole and trees beginning 169' from DER, 285' right of centerline, up to 49' AGL/1808' MSL.
Rwy 32, Trees beginning 35' from DER, 87' left of centerline, up to 60' AGL/1749' MSL. Trees beginning 178' from DER, 14' right of centerline, up to 67' AGL/1756' MSL.

31 MAY 2012 to 28 JUN 2012

31 MAY 2012 to 28 JUN 2012

12152

TAKE-OFF MINIMUMS AND (OBSTACLE) DEPARTURE PROCEDURES

NE-4



12152

DANVILLE, PA

DANVILLE (8N8)

ORIG 12152 (FAA)

TAKE-OFF MINIMUMS: **Rwy 9**, std. w/min. climb of 370' per NM to 2000, or 1700-3 for climb in visual conditions.

Rwy 27, std. w/min. climb of 280' per NM to 2400, or 1700-3 for climb in visual conditions.

DEPARTURE PROCEDURE: **Rwy 9**, climb heading 088° to 2000 before proceeding on course or for climb in visual conditions cross Danville Airport at or above 1900 before proceeding on course. When executing VCOA, notify ATC prior to departure. **Rwy 27**, climb heading 268° to 2400 before proceeding on course or for climb in visual conditions cross Danville Airport at or above 1900 before proceeding on course. When executing VCOA, notify ATC prior to departure.

NOTE: **Rwy 9**, trees beginning 665' from DER, 554' right of centerline, up to 100' AGL/699' MSL. Trees beginning 769' from DER, 326' left of centerline, up to 100' AGL/659' MSL. **Rwy 27**, trees beginning 1332' from DER, 274' right of centerline, up to 100' AGL/619' MSL. Trees beginning 968' from DER, 136' left of centerline, up to 100' AGL/639' MSL. Pole beginning 1145' from DER, 174' left of centerline, 58' AGL/588' MSL.

DOYLESTOWN, PA

DOYLESTOWN

NOTE: **Rwy 5**, terrain and trees 246' from departure end of runway, 457' right of centerline, 60' AGL/460' MSL.

Rwy 23, terrain and tree 1498' from departure end of runway, 764' left of centerline, 100' AGL/460' MSL; terrain and trees 2701' from departure end of runway, 44' left of centerline, 100' AGL/480' MSL.

DUBOIS, PA

DUBOIS RGNL (DUJ)

AMDT 2 10154 (FAA)

NOTE: **Rwy 7**, wind sock 31' from DER, 452' left of centerline, 29' AGL/1834' MSL. Tree 1608' from DER, 698' right of centerline, up to 99' AGL/1859' MSL.

Rwy 25, wind sock and trees beginning 97' from DER, 300' right of centerline, up to 74' AGL/1854' MSL.

Buildings and trees beginning 164' from DER, 254' left of centerline, up to 92' AGL/1872' MSL.

EAST STROUDSBURG, PA

STROUDSBURG-POCONO (N53)

AMDT 1 11069 (FAA)

TAKE-OFF MINIMUMS: **Rwy 8**, std. w/min. climb of 440' per NM to 1100, or 1500-2½ for climb in visual conditions. **Rwy 26**, 300-1 w/min. climb of 405' per NM to 1500, or 1500-2½ for climb in visual conditions.

DEPARTURE PROCEDURE: **Rwy 8**, climb heading 077° to 1800 before proceeding on course, or for climb in visual conditions, cross Stroudsburg-Pocono Airport at or above 1800 before proceeding on course. **Rwy 26**, climb heading 258° to 2600 before proceeding on course, or for climb in visual conditions, cross Stroudsburg-Pocono Airport at or above 1800 before proceeding on course.

NOTE: **Rwy 8**, trees beginning 265' from DER, 145' right of centerline, up to 100' AGL/599' MSL. Trees beginning 275' from DER, 70' left of centerline, up to 100' AGL/599' MSL. Vehicle on road 275' from DER, 70' left of centerline, up to 15' AGL/514' MSL. Houses beginning 597' from DER, 41' left of centerline, up to 40' AGL/539' MSL. Houses beginning 656' from DER, 205' right of centerline, up to 40' AGL/539' MSL. Trees beginning 2467' from DER, 878' left of centerline, up to 100' AGL/619' MSL. Trees beginning 4113' from DER, 55' left of centerline, up to 100' AGL/619' MSL. Trees beginning 5035' from DER, 1083' right of centerline, up to 100' AGL/619' MSL. **Rwy 26**, trees beginning 97' from DER, 369' right of centerline, up to 100' AGL/579' MSL. Trees beginning 366' from DER, 526' left of centerline, up to 100' AGL/639' MSL. Trees beginning 1792' from DER, 972' right of centerline, up to 100' AGL/639' MSL. Trees beginning 1882' from DER, 529' left of centerline, up to 100' AGL/659' MSL.

EASTON, PA

BRADEN AIRPARK (N43)

AMDT 1 10294 (FAA)

TAKE-OFF MINIMUMS: **Rwy 18**, 400-2½ or std. w/min. climb of 203' per NM to 900, or alternatively, with standard takeoff minimums and a normal 200'/NM climb gradient, takeoff must occur no later than 1200' prior to DER. **Rwy 36**, standard with minimum climb of 452' per NM to 1300 or 600-3 with minimum climb of 256' per NM to 2600 or 1300-2½ for climb in visual conditions.

DEPARTURE PROCEDURE: **Rwy 18**, climb heading 179° to 1100 before proceeding on course. **Rwy 36**, for climb in visual conditions: cross Braden Airport at or above 1500 before proceeding on course.

NOTE: **Rwy 18**, trees beginning 571' from DER, 453' left of centerline, up to 100' AGL/499' MSL. Trees beginning 1366' from DER, 539' right of centerline, up to 100' AGL/499' MSL. **Rwy 36**, vehicles on road, 50' from DER, on centerline, up to 15' AGL/414' MSL. Trees beginning 986' from DER, 40' left of centerline, up to 100' AGL/539' MSL. Building and trees beginning 153' from DER, 89' right of centerline, up to 100' AGL/539' MSL.

31 MAY 2012 to 28 JUN 2012

31 MAY 2012 to 28 JUN 2012

12152



TAKE-OFF MINIMUMS AND (OBSTACLE) DEPARTURE PROCEDURES

12152

EBENSBURG, PA

EBENSBURG (9G8)
AMDT 2 09127 (FAA)

TAKE-OFF MINIMUMS: **Rwy 7**, 300-1½ or std. w/min. climb of 350' per NM to 2500.

NOTE: **Rwy 25**, numerous trees beginning 632' from DER, 245' left of centerline, up to 100' AGL/2179' MSL. Numerous trees beginning 759' from DER, 477' right of centerline, up to 100' AGL/2159' MSL. **Rwy 7**, numerous trees beginning 245' from DER, 476' right of centerline, up to 100' AGL/2279' MSL. Numerous trees beginning 696' from DER, 273' left of centerline, up to 100' AGL/2389' MSL. Stack 1.1 NM from DER, 1571' right of centerline, 192' AGL/2352' MSL. Tower 1.17 NM from DER, 1529' right of centerline, 198' AGL/2348' MSL. Vehicle on highway, 487' from DER, 180' right of centerline, 19' AGL/2138' MSL.

ELKINS, WV

ELKINS-RANDOLPH COUNTY-JENNINGS
RANDOLPH FIELD

TAKE-OFF MINIMUMS: **Rwys 5, 14, 32**, NA-obstacles.

Rwy 23, 1800-2 or std. with a min. climb of 360' per NM to 4300.

DEPARTURE PROCEDURE: **Rwy 23**, climb via heading 200° to 5000 then climbing right turn to 6000 direct to EKN VORTAC then EKNR-346, expect radar vectors.

NOTE: **Rwy 23**, OL and trees 788' from departure end of runway, 206' left of centerline, 85' AGL/2059' MSL.

Trees 10, 130' from departure end of runway, 700' left of centerline, 105' AGL/2331' MSL.

ERIE, PA

ERIE INTL/TOM RIDGE FIELD (ERI)
AMDT 5 09183 (FAA)

TAKE-OFF MINIMUMS: **Rwy 20**, 300-1½ or std. w/min. climb of 314' per NM to 1100.

DEPARTURE PROCEDURE: **Rwy 2**, climb heading 018° to 1300 before turning right. **Rwy 6**, climb heading 062° to 1900 before turning right. **Rwy 20**, climb heading 198° to 1700 before turning left. **Rwy 24**, climb heading 242° to 1400 before turning left.

NOTE: **Rwy 2**, vehicles on road and trees beginning 30' from DER, 80' left of centerline, up to 64' AGL/796' MSL. Fence and trees beginning 73' from DER, 10' right of centerline, up to 76' AGL/805' MSL. **Rwy 6**, vehicles on road and trees beginning 384' from DER, 291' left of centerline, up to 96' AGL/815' MSL. Vehicles on road, fence, and trees beginning 8' from DER, 366' right of centerline, up to 91' AGL/820' MSL. **Rwy 20**, railroad, building, poles and trees beginning 115' from DER, 2' left of centerline, up to 76' AGL/845' MSL. Trees beginning 378' from DER, 19' right of centerline, up to 80' AGL/859' MSL. Trees 1.0 NM from DER, 704' right of centerline, 133' AGL/982' MSL. **Rwy 24**, railroad, pole, and trees beginning 11' from DER, 325' left of centerline, up to 80' AGL/819' MSL. Rod on building, antenna, and trees beginning 151' from DER, 250' right of centerline, up to 87' AGL/826' MSL.

FACTORYVILLE, PA

SEAMANS FIELD (9N3)
AMDT 3 08213 (FAA)

TAKE-OFF MINIMUMS: **Rwy 4**, 400-2½ or std. w/min. climb of 221' per NM to 1700.

DEPARTURE PROCEDURE: **Rwy 4**, climb heading 036° to 1700 before proceeding on course. **Rwy 23**, climb heading 216° to 2900 before proceeding on course.

NOTE: **Rwy 4**, trees beginning 1134' from departure end of runway, 720' right of centerline, up to 65' AGL/1264' MSL. Trees beginning 1.82 NM from departure end of runway, 774' left of centerline, up to 100' AGL/1499' MSL.

FAIRMONT, WV

FAIRMONT MUNI-FRANKMAN FIELD (4G7)
AMDT 6 10154 (FAA)

TAKE-OFF MINIMUMS: **Rwy 5**, 500-2¼ or std. w/min. climb of 420' per NM to 1800. **Rwy 23**, 500-2¼ w/min. climb of 270' per NM to 1900 or 1200-3 for climb in visual conditions.

DEPARTURE PROCEDURE: **Rwy 5**, climb heading 045° to 1800 before proceeding on course. **Rwy 23**, climb heading 225° to 1700 before proceeding on course or for climb in visual conditions: Cross Fairmont Muni-Frankman Field Airport at or above 2200 MSL before proceeding on course.

NOTE: **Rwy 5**, tree 1739' from DER, 831' right of centerline, 99' AGL/1166' MSL. Multiple trees and towers beginning 27' from DER, 99' right of centerline, up to 217' AGL/1475' MSL. Trees 1282' from DER, 620' left of centerline, 78' AGL/1057' MSL. **Rwy 23**, multiple trees beginning 493' from DER, 77' right of centerline, up to 100' AGL/1499' MSL. Road, multiple trees, and rising terrain beginning 814' from DER, 338' left of centerline, up to 200' AGL/1438' MSL.

FRANKLIN, PA

VENANGO RGNL

DEPARTURE PROCEDURE: **Rwy 3**, climb via heading 027° to 2000 before proceeding on course. **Rwy 12**, climb via heading 116° to 2000 before proceeding on course.

Rwy 21, climb via heading 207° to 2000 before proceeding on course. **Rwy 30**, climb via heading 296° to 2000 before proceeding on course.

NOTES: **Rwy 3**, tree 638' from departure end of runway, 528' right of centerline, 34' AGL/1553' MSL. Tree 2547' from departure end of runway, 697' right of centerline, 78' AGL/1597' MSL. **Rwy 12**, tank 1027' from departure end of runway, 660' left of centerline, 92' AGL/1612' MSL. Tree 1123' from departure end of runway, 504' left of centerline, 81' AGL/1600' MSL. Tree 800' from departure end of runway, 369' right of centerline, 71' AGL/1571' MSL. **Rwy 21**, multiple trees beginning 573' from departure end of runway, 191' to 679' right of centerline, up to 81' AGL/1599' MSL. Multiple trees beginning 264' from departure end of runway, 326' to 749' left of centerline, up to 68' AGL/1597' MSL. Sign 2474' from departure end of runway, 30' right of centerline, 94' AGL/1606' MSL. **Rwy 21**, pole 1295' from departure end of runway, 530' left of centerline, 47' AGL/1567' MSL.

31 MAY 2012 to 28 JUN 2012

31 MAY 2012 to 28 JUN 2012

12152

TAKE-OFF MINIMUMS AND (OBSTACLE) DEPARTURE PROCEDURES



12152

GETTYSBURG, PA

GETTYSBURG RGNL (W05)

ORIG 10154 (FAA)

TAKE-OFF MINIMUMS: **Rwy 6**, NA, obstacles. **Rwy 24**, std. w/min. climb of 310' per NM to 1900, or 1300-2½ for climb in visual conditions.

DEPARTURE PROCEDURE: **Rwy 24**, climb heading 241° to 1900 before proceeding on course, or for climb in visual conditions cross Gettysburg Rgnl airport at or above 1700 before proceeding on course.

NOTE: **Rwy 24**, vehicle on road 350' from DER, 61' left of centerline 17' AGL/576' MSL. Trees beginning 273' from DER, 214' right of centerline, up to 100' AGL/639' MSL.

GROVE CITY, PA

GROVE CITY (29D)

AMDT 3 08045 (FAA)

TAKE-OFF MINIMUMS: **Rwy 10**, 300-1½ or std. w/min. climb of 265' per NM to 1600. **Rwy 28**, 300-1 or std. w/min. climb of 416' per NM to 1600.

NOTES: **Rwy 10**, Multiple trees beginning 264' from departure end of runway, 43' left of centerline, up to 79' AGL/1388' MSL. Multiple buildings beginning 136' from departure end of runway, 490' right of centerline, up to 30' AGL/1332' MSL. Interchange 903' from departure end of runway, 707' right of centerline, up to 59' AGL/1348' MSL. Landfill 1.2 NM from departure end of runway, 702' right of centerline, 140' AGL/1476' MSL. **Rwy 28**, Multiple trees beginning 331' from departure end of runway, 71' right of centerline, up to 100' AGL/1509' MSL. Multiple trees beginning 666' from departure end of runway, 375' left of centerline, up to 100' AGL/1509' MSL. Multiple powerlines beginning 381' from departure end of runway, 2' left of centerline, up to 60' AGL/1469' MSL. Multiple powerlines beginning 1782' from departure end of runway, 48' right of centerline, up to 60' AGL/1449' MSL.

HARRISBURG, PA

HARRISBURG/CAPITAL CITY (CXY)

AMDT 4 11041 (FAA)

TAKE-OFF MINIMUMS: **Rwy 8**, 300-2 ¼ or std. w/min. climb of 244' per NM to 800. **Rwy 12**, std. w/min. climb of 377' per NM to 1300 or 700-3 w/min. climb of 336' per NM to 1300.

Rwy 26, 400-2 ¼ or std. w/min. climb of 334' per NM to 900. **Rwy 30**, 300-1 ¼ or std. w/min. climb of 513' per NM to 700. DEPARTURE PROCEDURE: **Rwy 8**, climb heading 082° to 1300 before proceeding on course. **Rwy 12**, climb heading 128° to 1400 before proceeding on course.

Rwy 26, climb heading 262° to 1500 before proceeding on course. **Rwy 30**, climb heading 308° to 1900 before proceeding on course.

NOTE: **Rwy 8**, vehicles on road, poles, and trees beginning 204' from DER, 21' left of centerline, up to 47' AGL/376' MSL. Antenna on building, poles, and trees beginning 101' from DER, 68' right of centerline, up to 57' AGL/386' MSL. Trees 1.3 NM from DER, 944' left of centerline, up to 69' AGL/598' MSL. Trees 1.8 NM from DER, 169' right of centerline, up to 78' AGL/637' MSL. **Rwy 12**, bush, sign, chimney, church spire, poles, and trees beginning 35' from DER, 145' left of centerline, up to 64' AGL/453' MSL. Terrain, railroad, buildings, and trees beginning 6' from DER, 18' right of centerline, up to 42' AGL/392' MSL. Trees 2.1 NM from DER, 3961' left of centerline, up to 100' AGL/979' MSL. Trees 2.5 NM from DER, 3716' right of centerline, up to 100' AGL/1039' MSL. **Rwy 26**, bush and trees beginning 29' from DER, 102' left of centerline, up to 59' AGL/478' MSL. Trees beginning 525' from DER, 348' left of centerline, up to 48' AGL/447' MSL. Trees 1.4 NM from DER, 1654' left of centerline, up to 61' AGL/690' MSL. Trees 1.7 NM from DER, 3154' left of centerline, up to 100' AGL/739' MSL. **Rwy 30**, light standard and trees beginning 213' from DER, 30' left of centerline, up to 65' AGL/484' MSL. Pole and trees beginning 411' from DER, 72' right of centerline, up to 78' AGL/397' MSL. Trees 3136' from DER, 1282' left of centerline, up to 42' AGL/541' MSL. Trees 5546' from DER, 423' left of centerline, up to 61' AGL/580' MSL.

HARRISBURG INTL (MDT)

AMDT 8 09323 (FAA)

TAKE-OFF MINIMUMS: **Rwy 13**, 300-2¼ or std. w/min. climb of 260' per NM to 700.

DEPARTURE PROCEDURE: **Rwy 13**, climb heading 128° to 1700 before proceeding on course. **Rwy 31**, climb heading 308° to 1900 before proceeding on course.

NOTE: **Rwy 13**, trees beginning 1468' from DER, 459' left of centerline, up to 81' AGL/595' MSL. Trees beginning 3058' from DER, 733' right of centerline, up to 100' AGL/576' MSL. Poles and buildings beginning 1.36 NM from DER, 157' right of centerline, up to 33' AGL/548' MSL. Towers 1.82 NM from DER, 3168' left of centerline, 148' AGL/598' MSL. **Rwy 31**, levee at DER, 351' left of centerline, up to 15' AGL/311' MSL. Light on localizer antenna 300' from DER, on centerline, 30' AGL/311' MSL. Trees beginning 380' from DER, 56' left of centerline, up to 34' AGL/323' MSL. Antennas, poles, and buildings beginning 247' from DER, 247' right of centerline, up to 72' AGL/371' MSL.

31 MAY 2012 to 28 JUN 2012

31 MAY 2012 to 28 JUN 2012

12152



NE-4

TAKE-OFF MINIMUMS AND (OBSTACLE) DEPARTURE PROCEDURES

12152

HAZLETON, PA

HAZLETON MUNI

TAKE-OFF MINIMUMS: **Rwys 10,28**, 300-1.DEPARTURE PROCEDURE: **Rwys 10, 28** climb runway heading 2200 before turning on course.

HONESDALE, PA

CHERRY RIDGE (N30)

AMDT 4 10154 (FAA)

TAKE-OFF MINIMUMS: **Rwy 18**, 500-2½ or std. w/ min. climb of 210' per NM to 1800, or alternatively, with standard take-off minimums and a normal 200'/NM climb gradient, take-off must occur no later than 1400' prior to DER. **Rwy 36**, 500-2¼ or std. w/ min. climb of 642' per NM to 1900.DEPARTURE PROCEDURE: **Rwy 18**, climb heading 180° to 1800 before turning right.NOTE: **Rwy 18**, tree 3' from DER, 358' right of centerline, 100' AGL/1419' MSL. **Rwy 36**, trees beginning 1' from DER, 500' left of centerline, up to 100' AGL/1439' MSL.

HUNTINGTON, WV

TRI-STATE/MILTON J. FERGUSON FIELD (HTS)

AMDT 1 11013 (FAA)

DEPARTURE PROCEDURE: **Rwy 30**, climb heading 313° to 1800 before turning left.NOTE: **Rwy 12**, trees beginning 146' from DER, 220' right of centerline, up to 106' AGL/885' MSL. Trees beginning 304' from DER, 230' left of centerline, up to 97' AGL/856' MSL. **Rwy 30**, trees beginning 254' from DER, 127' left of centerline, up to 89' AGL/928' MSL. Trees beginning 76' from DER, 137' right of centerline, up to 105' AGL/944' MSL.

INDIANA, PA

INDIANA COUNTY-JIMMY STEWART FLD (IDI)

AMDT 2 11041 (FAA)

TAKE-OFF MINIMUMS: **Rwy 10**, std. w/ min. climb of 335' per NM to 1800 or 300-1½ w/ min. climb of 228' per NM to 2300 or 1300-3 for climb in visual conditions.**Rwy 28**, 300-2 or std. w/ min. climb of 267' per NM to 1800.DEPARTURE PROCEDURE: **Rwy 10**, climb heading 104° to 2600 before proceeding on course. For climb in visual conditions: cross Indiana County/Jimmy Stewart Field Airport at or above 2600 MSL before proceeding on course. **Rwy 28**, climb heading 284° to 1900 before proceeding East.NOTE: **Rwy 10**, trees beginning 131' from DER, 112' left of centerline, up to 60' AGL/1479' MSL. Trees beginning 178' from DER, 14' right of centerline, up to 97' AGL/1516' MSL. Trees 5870' from DER, 2003' right of centerline, up to 100' AGL/1659' MSL. **Rwy 28**, terrain, vehicles on road, and poles beginning 19' from DER, 232' right of centerline, up to 36' AGL/1415' MSL. Tower 1.5 NM from DER, 990' right of centerline, 121' AGL/1676' MSL. Tower 1.6 NM from DER, 861' right of centerline, 110' AGL/1670' MSL.

JOHNSTOWN, PA

JOHN MURTHA JOHNSTOWN-CAMBRIA CO (JST)

AMDT 4 08269 (FAA)

NOTE: **Rwy 5**, trees beginning 326' from departure end of runway, 342' right of centerline, up to 100' AGL/2358' MSL. Trees beginning 887' from departure end of runway, 384' left of centerline, up to 100' AGL/2341' MSL. **Rwy 23**, trees beginning 215' from departure end of runway, 227' right of centerline, up to 100' AGL/2339' MSL. Trees beginning 431' from departure end of runway, 250' left of centerline, up to 100' AGL/2379' MSL. **Rwy 33**, trees beginning 359' from departure end of runway, 318' right of centerline, up to 100' AGL/2409' MSL.

LANCASTER, PA

LANCASTER (LNS)

AMDT 1 09351 (FAA)

TAKE-OFF MINIMUMS: **Rwy 8**, 300-1¼ or std. w/ min. climb of 301' per NM to 700.**Rwy 31**, 300-1½ or std. w/ min. climb of 210' per NM to 700, or alternatively with standard takeoff minimums and a normal 200'/NM climb gradient, takeoff must occur no later than 1300' prior to DER.DEPARTURE PROCEDURE: **Rwy 8**, climb heading 077° to 800 before turning left.NOTE: **Rwy 8**, silo 590' from DER, 637' right of centerline, 88' AGL/427' MSL. Trees beginning 825' from DER, 41' right of centerline, up to 100' AGL/425' MSL. Trees beginning 1336' from DER, 281' left of centerline, up to 100' AGL/579' MSL. **Rwy 13**, trees beginning 2322' from DER, 902' right of centerline, up to 100' AGL/499' MSL. Trees beginning 615' from DER, 328' left of centerline, up to 43' AGL/442' MSL. **Rwy 26**, vehicles on road beginning 269' from DER, 494' right of centerline, up to 15' AGL/403' MSL. Tree 1257' from DER, 797' right of centerline, 59' AGL/439' MSL. Trees beginning 1927' from DER, 915' left of centerline, up to 100' AGL/489' MSL. **Rwy 31**, trees beginning 1334' from DER, 350' right of centerline, up to 100' AGL/571' MSL. Pole 402' from DER, 221' left of centerline, 24' AGL/404' MSL. Building 527' from DER, 229' left of centerline, 29' AGL/409' MSL. Trees beginning 956' from DER, 88' left of centerline, up to 100' AGL/489' MSL.

LATROBE, PA

ARNOLD PALMER RGNL

TAKE-OFF MINIMUMS: **Rwys 21,23**, 300-1.DEPARTURE PROCEDURE: **Rwys 3,5**, climb runway heading to 2000, then climbing left turn to 4000 via heading 360° to intercept IHD R-002. **Rwys 21,23**, climb to 4000 via BHU 233° bearing.

31 MAY 2012 to 28 JUN 2012

31 MAY 2012 to 28 JUN 2012

12152

TAKE-OFF MINIMUMS AND (OBSTACLE) DEPARTURE PROCEDURES

TAKE-OFF MINIMUMS AND (OBSTACLE) DEPARTURE PROCEDURES

12152

LEBANON, PA

KELLER BROTHERS (08N)
ORIG 12152 (FAA)

TAKE-OFF MINIMUMS: **Rwy 7**, 500-3 w/min. climb of 231' per NM to 1200 or 1500-2½ for climb in visual conditions. **Rwy 25**, 800-3 w/min. climb of 370' per NM to 1600 or 1500-2½ for climb in visual conditions.

DEPARTURE PROCEDURE: **Rwy 7**, climb heading 068° to 2000 before turning right, or for climb in visual conditions cross Keller Brothers Airport at or above 1900, before proceeding on course. **Rwy 25**, climb heading 248° to 2500 before proceeding on course, or for climb in visual conditions cross Keller Brothers Airport at or above 1900, before proceeding on course.

NOTE: **Rwy 7**, trees and buildings beginning 223' from DER, 113' left of centerline, up to 100' AGL/719' MSL. Trees and buildings beginning 1.6 NM from DER, 2422' right of centerline, up to 100' AGL/1499' MSL. **Rwy 25**, trees and buildings beginning 47' from DER, 39' right of centerline, up to 100' AGL/659' MSL. Trees and buildings beginning 355' from DER, 4' left of centerline, up to 100' AGL/1339' MSL.

LEHIGHTON, PA

JAKE ARNER MEMORIAL (22N)
AMDT 1 11125 (FAA)

TAKE-OFF MINIMUMS: **Rwy 8**, std. w/min. climb of 426' per NM to 1700 or 600-2¼ with minimum climb of 269' per NM to 1700 or 2000-3 for climb in visual conditions. **Rwy 26**, std. w/min. climb of 362' per NM to 1600 or 2000-3 for climb in visual conditions.

DEPARTURE PROCEDURE: **Rwy 8**, climb heading 081° to 2400 before proceeding on course, or for climb in visual conditions cross Jake Arner Memorial Airport at or above 2500 before proceeding on course. **Rwy 26**, climb heading 261° to 1900 before proceeding on course, or for climb in visual conditions cross Jake Arner Memorial Airport at or above 2500 before proceeding on course.

NOTE: **Rwy 8**, trees beginning 1961' from DER, 42' left of centerline, up to 100' AGL/426' MSL. Trees beginning 5388' from DER, 1817' right of centerline, up to 100' AGL/359' MSL. Building 1.5 NM from DER, 1826' right of centerline, 31' AGL/876' MSL. Tower 2.9 NM from DER, 4326' right of centerline, 207' AGL/967' MSL.

Rwy 26, trees beginning 3282' from DER, 10' left of centerline, up to 100' AGL/659' MSL. Trees beginning 4511' from DER, 879' right of centerline, up to 100' AGL/699' MSL.

LEWISBURG, WV

GREENBRIER VALLEY (LWB)
AMDT 4 09239 (FAA)

DEPARTURE PROCEDURE: **Rwy 4**, climb heading 043° to 3300 before proceeding on course. **Rwy 22**, climb heading 223° to 3100 before proceeding on course.

NOTE: **Rwy 4**, tree 1617' from DER, 528' right of centerline, 84' AGL/2364' MSL. **Rwy 22**, trees beginning 759' from DER 553' left of centerline, 60' AGL/2309' MSL. Trees beginning 1996' from DER, 289' right of centerline, up to 104' AGL/2364' MSL.

LOCK HAVEN, PA

WILLIAM T. PIPER MEMORIAL

TAKE-OFF MINIMUMS: **Rwys 9L, 9R**, NA-obstacles. **Rwy 27L**, NA-ATC. **Rwy 27R**, std. w/a min. climb of 393' per NM to 2500 or 2300-3 for climb in visual conditions.

DEPARTURE PROCEDURE: **Rwy 27R**, climb heading 273° to 2500 before proceeding on course or for climb in visual conditions cross William T. Piper Memorial Airport at or above 2700 MSL before proceeding on course.

NOTE: **Rwy 27R**, multiple terrain and trees beginning 1.4 NM from departure end of runway, 1194' right of centerline, up to 100' AGL/1119' MSL. Tower 1.8 NM from departure end of runway, 349' right of centerline, 154' AGL/895' MSL.

LOGAN, WV

LOGAN COUNTY

TAKE-OFF MINIMUMS: **Rwy 24**, 400-1.
DEPARTURE PROCEDURE: **Rwy 6**, climb runway heading to 3000 before proceeding on course. **Rwy 24**, climb runway heading to 3000 before proceeding on course.

NOTE: **Rwy 24**, 148' AGL trees 1500' from departure end of runway.

MARTINSBURG, WV

EASTERN WEST VIRGINIA RGNL/
SHEPHERD FIELD (MRB)

AMDT 6 08269 (FAA)

DEPARTURE PROCEDURE: **Rwy 8**, climb heading 079° to 1300 before proceeding on course. **Rwy 26**, climb heading 259° to 1000, then climbing left turn to 2500 direct MRB VORTAC before proceeding on course.

NOTE: **Rwy 8**, trees 1056' from departure end of runway, 706' left of centerline, 47' AGL/594' MSL. Trees 1516' from departure end of runway, 617' right of centerline, 39' AGL/586' MSL. **Rwy 26**, trees 511' from departure end of runway, 522' right of centerline, 35' AGL/592' MSL. Antenna on obstruction light building 657' from departure end of runway, 656' left of centerline, 37' AGL/594' MSL.

MEADVILLE, PA

PORT MEADVILLE (GKJ)
AMDT 4 10266 (FAA)

DEPARTURE PROCEDURE: **Rwy 7**, climb heading 069° to 2000 before proceeding on course.

NOTE: **Rwy 7**, pole and trees beginning 30' from DER, 128' left of centerline, up to 86' AGL/1465' MSL. Terrain and trees beginning 58' from DER, 174' right of centerline, up to 96' AGL/1455' MSL. **Rwy 25**, trees beginning 33' from DER, 41' left of centerline, up to 90' AGL/1449' MSL. Trees beginning 51' from DER, 17' right of centerline, up to 106' AGL/1455' MSL.

31 MAY 2012 to 28 JUN 2012

31 MAY 2012 to 28 JUN 2012

12152

TAKE-OFF MINIMUMS AND (OBSTACLE) DEPARTURE PROCEDURES

NE-4

TAKE-OFF MINIMUMS AND (OBSTACLE) DEPARTURE PROCEDURES

12152

MIFFLINTOWN, PA

MIFFLINTOWN

TAKE-OFF MINIMUMS: **Rwy 8**, std. with a min. climb of 500' per NM to 4000 or 2100-3 for climb in visual conditions. **Rwy 26**, NA-obstacles.

DEPARTURE PROCEDURE: **Rwy 8**, climb heading 090° to 4000 before proceeding on course or for climb in visual conditions: cross Mifflintown Airport at or above 2500 MSL before proceeding on course.

NOTE: **Rwy 8**, multiple terrain and trees beginning 1332' from departure end of runway, 356' left of centerline, up to 200' AGL/839' MSL. Trees 1.2 NM from departure end of runway, 2350' right of centerline, up to 100' AGL/759' MSL.

MILTON, WV

ONA AIRPARK (12V)

AMDT 2 08101 (FAA)

TAKE-OFF MINIMUMS: **Rwys 7, 25**, 1900-3 climb in visual conditions.

DEPARTURE PROCEDURE: **Rwys 7, 25**, Departure NA at night. For climb in visual conditions: cross Ona Airpark at or above 2300 MSL before proceeding on course. Do not exceed 180 KIAS until crossing Ona Airpark on course.

NOTE: **Rwy 7**, trees beginning 730' from departure end of runway, 44' left of centerline, up to 100' AGL/1019' MSL. Trees 4879' from departure end of runway, 597' right of centerline, up to 100' AGL/999' MSL. Trees beginning 1.8 NM from departure end of runway, 2539' left of centerline, up to 100' AGL/1199' MSL. Trees beginning 1.6 NM from departure end of runway, 556' right of centerline, up to 100' AGL/1199' MSL. **Rwy 25**, trees beginning 94' from departure end of runway, 47' right of centerline, up to 100' AGL/719' MSL. Towers and trees beginning 3016' from departure end of runway, 758' left of centerline, up to 125' AGL/822' MSL. Trees beginning 2 NM from departure end of runway, 3193' left of centerline, up to 100' AGL/1079' MSL.

MONONGAHELA, PA

ROSTRAVER (FWQ)

AMDT 1A 11209 (FAA)

DEPARTURE PROCEDURE: **Rwy 8**, climb heading 076° to 1800 before turning left.

NOTE: **Rwy 8**, runway end identifier light and trees beginning 6' from DER, 18' left of centerline, up to 80' AGL/1339' MSL. Runway end identifier light and trees beginning 7' from DER, 1' right of centerline, up to 81' AGL/1310' MSL. **Rwy 26**, runway end identifier light, catenary, antenna, telephone pylons, poles, powerlines and trees beginning 1' from DER, 46' left of centerline, up to 107' AGL/1354' MSL. Runway end identifier light, light pole, and trees beginning 6' from DER, 77' right of centerline, up to 49' AGL/1268' MSL.

MORGANTOWN, WV

MORGANTOWN MUNI-WALTER L. BILL HART FIELD

TAKE-OFF MINIMUMS: **Rwy 5**, 400-1. **Rwy 23**, 600-1. DEPARTURE PROCEDURE: **Rwy 5**, climbing left turn to 3500 via heading 040° to intercept MGW R-015 before proceeding on course. **Rwy 18**, climbing right turn to 2700 via heading 225° before proceeding on course. **Rwy 23**, climbing left turn to 2700 via heading 190° before proceeding on course. **Rwy 36**, climb runway heading to 2700 before proceeding on course.

12152

TAKE-OFF MINIMUMS AND (OBSTACLE) DEPARTURE PROCEDURES

MOUNDSVILLE, WV

MARSHALL COUNTY

TAKE-OFF MINIMUMS: **Rwy 6**, 500-2 or std. with a min. climb of 210' per NM to 1900. **Rwy 24**, 300-2 or std. with a min climb of 230' per NM to 1600.

MOUNT JOY/MARIETTA, PA

DONEGAL SPRINGS AIRPARK (N71)

AMDT 2 07354 (FAA)

DEPARTURE PROCEDURE: **Rwy 10**, climb heading 094° to 1300 before turning southwest. **Rwy 28**, climb heading 274° to 1900 before turning south.

NOTE: **Rwy 10**, tree 433' from departure end of runway, 487' right of centerline, 100' AGL/519' MSL.

MOUNT POCONO, PA

POCONO MOUNTAINS MUNI (MPO)

AMDT 2 10322 (FAA)

TAKE-OFF MINIMUMS: **Rwy 5**, 300-2 or std. w/min. climb of 234' per NM to 2300. **Rwy 31**, 300-1½ or std. w/min. climb of 266' per NM to 2200.

DEPARTURE PROCEDURE: **Rwy 5**, climb heading 050° to 2500 before proceeding on course. **Rwy 13**, climb heading 128° to 2500 before proceeding on course. **Rwy 23**, climb heading 230° to 2500 before proceeding on course. **Rwy 31**, climb heading 308° to 2500 before proceeding on course.

NOTE: **Rwy 5**, trees beginning 4' from DER, 493' right of centerline, up to 100' AGL/2039' MSL. Trees beginning 19' from DER, 499' left of centerline, up to 100' AGL/2019' MSL. Tower 1.5 NM from DER, 2728' left of centerline, 177' AGL/2200' MSL. Vehicles 754' from DER, 55' left of centerline, up to 17' MSL/1957' MSL. **Rwy 13**, trees beginning 185' from DER, 52' left of centerline, up to 100' AGL/1989' MSL. Trees beginning 1628' from DER, 187' right of centerline, up to 100' AGL/1989' MSL. **Rwy 23**, trees beginning 14' from DER, 347' left of centerline, up to 100' AGL/1945' MSL. Trees beginning 73' from DER, 20' right of centerline, up to 100' AGL/1936' MSL. **Rwy 31**, trees beginning 7' from DER, 287' right of centerline, up to 100' AGL/2079' MSL. Trees beginning 580' from DER, 245' left of centerline, up to 100' AGL/1969' MSL. Railroad tracks 1459' from DER, up to 23' AGL/1903' MSL.

MUIR AAF (KMUI)

FORT INDIANTOWN GAP, PA. 09015

DEPARTURE PROCEDURE: **Rwy 7**, climbing right turn on 190 bearing from BZJ NDB to 1900 before proceeding on course. **Rwy 25**, climbing left turn on 190 bearing from BZJ NDB to 1800 before proceeding on course.

TAKE-OFF OBSTACLES: **Rwy 7**, Trees 309' from DER, left of centerline, 81' AGL/514' MSL. Trees 2945' from DER, 662' right of centerline, 63' AGL/562' MSL. **Rwy 25**, Tree 26' from DER, 415' right of centerline, 43' AGL/505' MSL. Vehicle on road 280' from DER, 61' left of centerline, 15' AGL/474' MSL. Building 382' from DER, 235' left of centerline, 33' AGL/492' MSL.

31 MAY 2012 to 28 JUN 2012

31 MAY 2012 to 28 JUN 2012

TAKE-OFF MINIMUMS AND (OBSTACLE) DEPARTURE PROCEDURES

12152

MYERSTOWN, PA

DECK

DEPARTURE PROCEDURE: **Rwy 19**, climb heading 174° to 1600 before proceeding on course.

NOTE: **Rwy 1**, tree 315' from departure end of runway, 579' right of centerline, 41' AGL/570' MSL. Pole 697' from departure end of runway, 621' right of centerline, 31' AGL/553' MSL. Tree 878' from departure end of runway, 616' right of centerline, 56' AGL/572' MSL.

NEW CASTLE, PA

NEW CASTLE MUNI

TAKE-OFF MINIMUMS: **Rwy 13**, 300-1 or std. with a min. climb of 350' per NM to 1400.

NOTE: **Rwy 5**, tree 785' from departure end of runway, 196' right of centerline, 32' AGL/1029' MSL. **Rwy 13**, trees 4087' from departure end of runway, 1531' right of centerline, 100' AGL/1249' MSL. Building 262' from departure end of runway, 179' left of centerline, 24' AGL/1088' MSL. **Rwy 31**, tree 497' from departure end of runway, 18' right of centerline, 28' AGL/1044' MSL.

PALMYRA, PA

REIGLE FIELD (58N)

ORIG-A 11349 (FAA)

TAKE-OFF MINIMUMS: **Rwys 13, 31**, NA at night.

Rwy 13, 1000-3 w/min. climb of 373' to 2500 or 1600-2½ for climb in visual conditions.

Rwy 31, 1000-3 or 1600-2½ for climb in visual conditions.

DEPARTURE PROCEDURE: **Rwy 13**, climb heading 127° to 2500 before proceeding on course or for climb in visual conditions: cross Reigle Field Airport at or above 1900 MSL before proceeding on course. **Rwy 31**, climb heading 307° to 2500 before proceeding on course or for climb in visual conditions: cross Reigle Field Airport at or above 1900 MSL before proceeding on course.

NOTE: **Rwy 13**, vehicles/buildings/power lines beginning 60' from DER on centerline, up to 200' AGL/699' MSL. Terrain beginning 2 NM from DER, 50' right of centerline, up to 1160' MSL. Signs beginning 165' from DER, 244' right of centerline, up to 9' AGL/501' MSL.

Rwy 31, buildings/power lines beginning 1250' from DER, on centerline, up to 200' AGL/679' MSL.

PARKERSBURG, WV

MID-OHIO VALLEY RGNL (PKB)

AMDT 2 09155 (FAA)

TAKE-OFF MINIMUMS: **Rwy 3**, 300-1 or std. w/min. climb of 451' per NM to 1300. **Rwy 28**, 500-3 or std. w/min. climb of 295' per NM to 1600.

NOTE: **Rwy 3**, trees beginning 253' from DER, 424' left of centerline, up to 100' AGL/1080' MSL. Trees 2615' from DER, 807' right of centerline, 100' AGL/935' MSL. **Rwy 10**, trees beginning 281' from DER, left and right of centerline, up to 100' AGL/889' MSL. **Rwy 21**, trees beginning 513' from DER, 193' right of centerline, up to 100' AGL/952' MSL. Trees beginning 248' from DER, 499' left of centerline, up to 100' AGL/837' MSL. Trees 4457' from DER, 239' right of centerline, 100' AGL/944' MSL. **Rwy 28**, trees beginning 97' from DER, 387' right of centerline, up to 100' AGL/862' MSL.

PERKASIE, PA

PENNRIDGE (CKZ)

ORIG-A 11125 (FAA)

TAKE-OFF MINIMUMS: **Rwy 8**, 300-1. **Rwy 26**, 500-2 ¼ or std. w/min. climb of 252' per NM to 1200.

PETERSBURG, WV

GRANT COUNTY

TAKE-OFF MINIMUMS: **Rwys 13, 31**, 1500-3.

DEPARTURE PROCEDURE: **Rwys 13, 31**, climb visually so as to cross airport at or above 2400 hence continue climb to 5000 northeast on heading 033° to intercept ESL R-213 direct to ESL.

PHILADELPHIA, PA

NORTHEAST PHILADELPHIA (PNE)

ORIG 08045 (FAA)

TAKE-OFF MINIMUMS: **Rwy 33**, 200-1 ¼ or std. w/min. climb of 223' per NM to 400, or alternatively, with standard takeoff minimums and a normal 200'/NM climb gradient, takeoff must occur no later than 1600' prior to departure end of runway.

NOTES: **Rwy 6**, Trees 1355' from departure end of runway, 803' left of centerline 58' AGL/179' MSL. Trees 1576' from departure end of runway, 835' left of centerline, 44' AGL/165' MSL. **Rwy 15**, Vehicles on roads beginning 540' from departure end of runway, on centerline, up to 15' AGL/134' MSL. Trees beginning 592' from departure end of runway, 42' left of centerline, up to 74' AGL/166' MSL. Trees beginning 928' from departure end of runway, 213' right of centerline, up to 64' AGL/173' MSL. **Rwy 24**, Trees beginning 198' from departure end of runway 198' left of centerline, up to 38' AGL/158' MSL. Vehicle on road 450' from departure end of runway, on centerline, 15' AGL/134' MSL. Tank and trees beginning 2343' from departure end of runway, 577' left of centerline, up to 91' AGL/200' MSL. Bushes and trees beginning 118' from departure end of runway, 182' right of centerline, up to 26' AGL/137' MSL. Trees beginning 1325' from departure end of runway, 220' right of centerline, up to 77' AGL/197' MSL. **Rwy 33**, Vehicle on road 2050' from departure end of runway, on centerline, 15' AGL/174' MSL. Bushes and trees beginning 491' from departure end of runway, 29' left of centerline, up to 66' AGL/225' MSL. Obstruction light transmission towers, beginning 5872' from departure end of runway, 401' left of centerline, up to 125' AGL/284' MSL. Bushes and trees beginning 636' from departure end of runway, 185' right of centerline, up to 57' AGL/215' MSL.

31 MAY 2012 to 28 JUN 2012

31 MAY 2012 to 28 JUN 2012

12152

TAKE-OFF MINIMUMS AND (OBSTACLE) DEPARTURE PROCEDURES

NE-4

TAKE-OFF MINIMUMS AND (OBSTACLE) DEPARTURE PROCEDURES

12152

PHILADELPHIA, PA (CON'T)

PHILADELPHIA INTL (PHL)

AMDT 9 12152 (FAA)

TAKE-OFF MINIMUMS: **Rwy 8**, std. w/min. climb of 320' per NM to 1000. **Rwy 26**, NA-obstacles. **Rwy 9L**, std. w/min. climb of 390' per NM to 600. **Rwy 9R**, std. w/min. climb of 300' per NM to 400. **Rwy 17**, 300-1 or std. w/min. climb of 460' per NM to 300. **Rwy 35**, std. w/min. climb of 270' per NM to 1400.

NOTE: **Rwy 8**, fence 163' from DER, 250' right of centerline, 4' AGL/41' MSL. **Rwy 9L**, trees 593' from DER, 633' left of centerline, up to 12' AGL/26' MSL. **Rwy 9R**, towers beginning 2592' from DER, 1044' right of centerline, up to 140' AGL/145' MSL. **Rwy 17**, light poles and trees beginning 711' from DER, 244' left of centerline, up to 56' AGL/65' MSL. Trees beginning 1096' from DER, 126' right of centerline, up to 43' AGL/52' MSL. Ship in channel 3096' from DER, 86' left of centerline, up to 188' AGL/188' MSL. **Rwy 27L**, trees beginning 256' from DER, 282' right of centerline, up to 40' AGL/49' MSL. **Rwy 35**, fences, signs, light poles, transmission poles, and trees beginning 115' from DER, 360' left of centerline, up to 114' AGL/128' MSL. Fence, sign, flagpole, building, light poles, transmission poles, trees, and transmission tower beginning 444' from DER, 2' right of centerline, up to 120' AGL/130' MSL.

WINGS FIELD (LOM)

AMDT 2 10266 (FAA)

DEPARTURE PROCEDURE: **Rwy 24**, climb heading 245° to 1100 before turning left.

NOTE: **Rwy 6**, trees beginning 54' from DER, 103' left of centerline, up to 106' AGL/389' MSL. Trees beginning 513' from DER, 110' right of centerline, up to 107' AGL/347' MSL. **Rwy 24**, multiple trees, towers, buildings, flag poles, vehicles on road, and rising terrain beginning at DER, left and right of centerline, up to 160' AGL/444' MSL.

PHILIPPI, WV

PHILIPPI/BARBOR COUNTY RGNL (79D)

ORIG 08157 (FAA)

DEPARTURE PROCEDURE: **Rwy 8**, climb heading 083° to 3300 before turning south.

NOTE: **Rwy 8**, trees beginning 108' from departure end of runway, 118' right of centerline, up to 100' AGL/1799' MSL. **Rwy 26**, trees beginning 504' from departure end of runway, 220' left of centerline, up to 100' AGL/1779' MSL.

PHILIPSBURG, PA

MID-STATE

TAKE-OFF MINIMUMS: **Rwy 6**, 700-1. **Rwy 16**, 400-1. **Rwy 24**, 300-1.

DEPARTURE PROCEDURE: **Rwy 6**, climbing left turn to 2800 on heading 340° before proceeding on course. **Rwys 16, 24, 34**, climb runway heading to 2800 before proceeding on course.

PINEVILLE, WV

KEE FIELD

TAKE-OFF MINIMUMS: **Rwy 8**, 700-2. **Rwy 26**, 600-1.

DEPARTURE PROCEDURE: **Rwys 8, 26**, climb runway heading to 3000 before proceeding on course.

NOTE: **Rwy 8**, 86' trees/terrain 2100' from departure end on centerline. **Rwy 26**, 135' trees/terrain 1300' from departure end on centerline.

PITTSBURGH, PA

ALLEGHENY COUNTY

NOTE: **Rwy 10**, vehicle 91' from departure end of runway, 492' right of centerline, 15' AGL/1254' MSL. Tree 3783' from departure end of runway, 713' left of centerline, 69' AGL/1352' MSL. **Rwy 13**, vehicle 73' from departure end of runway, 412' right of centerline, 15' AGL/1254' MSL. Trees beginning 385' from departure end of runway, 120' right of centerline, up to 40' AGL/1268' MSL. **Rwy 31**, pole 265' from departure end of runway, 298' right of centerline, 49' AGL/1263' MSL.

PITTSBURGH INTL

TAKE-OFF MINIMUMS: **Rwy 32**, 200-1½ or std. w/min. climb of 240' per NM to 1500, or alternatively, with standard takeoff minimums and a normal 200'/NM climb gradient, takeoff must occur no later than 2100' prior to departure end of runway.

NOTE: **Rwy 10C**, multiple trees beginning 3207' from departure end of runway, 461' left of centerline, up to 29' AGL/1263' MSL. **Rwy 10L**, tree 1387' from departure end of runway, 733' left of centerline, 59' AGL/1233' MSL. Rod on obstruction light tower, 4168' from departure end of runway, 910' left of centerline, 112' AGL/1282' MSL. Tower 4175' from departure end of runway, 864' left of centerline, 112' AGL/1282' MSL. Tree 1463' from departure end of runway, 672' left of centerline, 38' AGL/1212' MSL. **Rwy 10R**, multiple trees beginning 1082' from departure end of runway, 102' right of centerline, up to 66' AGL/1265' MSL. Obstruction light on monitor pole 4590' from departure end of runway, 1124' left of centerline, 55' AGL/1241' MSL. Pole 4610' from departure end of runway, 1138' left of centerline, 55' AGL/1241' MSL. **Rwy 14**, tree 968' from departure end of runway, 516' right of centerline, 44' AGL/1158' MSL. **Rwy 28L**, tree 2272' from departure end of runway, 1109' left of centerline, 64' AGL/1223' MSL. Tree 39' from departure end of runway, 498' left of centerline, 9' AGL/1144' MSL. **Rwy 28R**, tree 1810' from departure end of runway, 912' right of centerline, 34' AGL/1273' MSL. Bush 73' from departure end of runway, 477' right of centerline, 12' AGL/1215' MSL. Pole 645' from departure end of runway, 633' left of centerline, 20' AGL/1223' MSL. **Rwy 32**, antenna on obstruction light tower 1.1 NM from departure end of runway, 435' left of centerline, 105' AGL/1354' MSL. Tower 6812' from departure end of runway, 497' left of centerline, 96' AGL/1342' MSL. Light on pole 454' from departure end of runway, 515' right of centerline, 25' AGL/1173' MSL. Multiple trees beginning 1717' from departure end of runway, 1108' right of centerline, up to 61' AGL/1321' MSL. Tree 6074' from departure end of runway, 1272' right of centerline, 61' AGL/1321' MSL. Tree 2577' from departure end of runway, 1108' right of centerline, 74' AGL/1233' MSL. Tree 2480' from departure end of runway, 1118' right of centerline, 33' AGL/1212' MSL.

POINT PLEASANT, WV

MASON COUNTY

TAKE-OFF MINIMUMS: **Rwy 7**, 300-1 or std. with a min. climb of 285' per NM to 1000.

DEPARTURE PROCEDURE: **Rwys 7, 25**, climb runway heading to 1600 before proceeding on course.

NOTE: **Rwy 25**, 60' AGL tree 475' left of departure end of runway.

12152

TAKE-OFF MINIMUMS AND (OBSTACLE) DEPARTURE PROCEDURES

NE-4



12152

POTTSTOWN, PA

HERITAGE FIELD (PTW)

ADMT 2A 09323 (FAA)

TAKE-OFF MINIMUMS: **Rwy 10**, 300-1¼ or std. with a min. climb of 290' per NM to 600. **Rwy 28**, 500-2.DEPARTURE PROCEDURE: **Rwy 28**, climb heading 276° to 900 before proceeding on course.**POTTSTOWN, PA (CON'T)**

POTTSTOWN MUNI (N47)

AMDT 2A 09295 (FAA)

TAKE-OFF MINIMUMS: **Rwy 8**, std. w/ min. climb of 414' per NM to 1300, or 600-3 w/ min. climb of 241' per NM to 1300, or 1300-2½ for climb in visual conditions.**Rwy 26**, std. w/ min. climb of 288' per NM to 1600 or 1300-2½ for climb in visual conditions.DEPARTURE PROCEDURE: **Rwy 8**, climb heading 076° to 1300 before proceeding on course. For climb in visual conditions: cross Pottstown Muni Airport at or above 1400 MSL before proceeding on course. **Rwy 26**, climb heading 271° to 1100 before proceeding on course. For climb in visual conditions: cross Pottstown Muni Airport at or above 1400 MSL before proceeding on course.NOTE: **Rwy 8**, terrain 2761' from DER, 124' right of centerline, 0' AGL/319' MSL. Multiple trees beginning 5919' from DER, 854' left of centerline, up to 100' AGL/ 559' MSL. Multiple trees beginning 1.3 NM from DER, 616' right of centerline, up to 100' AGL/759' MSL. **Rwy 26**, tree 400' from DER, on centerline, 35' AGL/295' MSL. Terrain 10' from DER, 246' left of centerline, 0' AGL/279' MSL. Tree 399' from DER, on centerline, up to 100' AGL/295' MSL. Multiple trees beginning 1 NM from DER, 2009' right of centerline, up to 100' AGL/579' MSL.**POTTSVILLE, PA**

SCHUYKILL COUNTY/JOE ZERBEY (ZER)

AMDT 2 09239 (FAA)

TAKE-OFF MINIMUMS: **Rwys 4, 22**, NA-Environmental.NOTE: **Rwy 11**, tree 88' from DER, 467' left of centerline, 23' AGL/1723' MSL. Tree 358' from DER, 545' right of centerline, 100' AGL/1779' MSL. **Rwy 29**, tree 433' from DER, 151' left of centerline, 100' AGL/ 1819' MSL. Tree 460' from DER, 263' right of centerline, 100' AGL/1819' MSL. Bush 86' from DER, 236' right of centerline, 7' AGL/1746' MSL.**PUNXSUTAWNEY, PA**

PUNXSUTAWNEY MUNI (N35)

AMDT 3 11069 (FAA)

TAKE-OFF MINIMUMS: **Rwy 1**, NA-obstacles.**Rwy 6**, 400-2½ or std. w/ min. climb of 344' per NM to 2000.**Rwy 19**, 500-2¼ or std. w/ min. climb of 285' per NM to 2000.DEPARTURE PROCEDURE: **Rwy 6**, climb on heading 067° to 2000 before proceeding on course. **Rwy 19**, climb on heading 188° to 2400 before proceeding on course. **Rwy 24**, climb on heading 247° to 2300 before proceeding on course.NOTE: **Rwy 6**, aircraft on taxiway 4' from DER, 171' right of centerline, up to 10' AGL/1447' MSL. Trees beginning 285' from DER, 304' left of centerline, up to 100' AGL/ 1542' MSL. Vehicle on road 505' from DER, 304' left of centerline, up to 15' AGL/1457' MSL. Building 732' from DER, 685' right of centerline, up to 40' AGL/1480' MSL. Vehicle on road 733' from DER, 352' right of centerline, up to 15' AGL/1457' MSL. Trees beginning 1252' from DER, 417' right of centerline, up to 100' AGL/1499' MSL. **Rwy 19**, trees beginning 8' from DER, 154' right of centerline, up to 100' AGL/1539' MSL. Building 43' from DER, 373' left of centerline, up to 20' AGL/1459' MSL. Trees beginning 169' from DER, 390' left of centerline, up to 100' AGL/1539' MSL. **Rwy 24**, buildings beginning 192' from DER, 57' right of centerline, up to 30' AGL/ 1489' MSL. Trees beginning 232' from DER, 174' left of centerline, up to 100' AGL/1510' MSL. Trees beginning 1015' from DER, 310' right of centerline, up to 100' AGL/ 1559' MSL.**RAVENSWOOD, WV**

JACKSON COUNTY (I18)

AMDT 2 11237 (FAA)

TAKE-OFF MINIMUMS: **Rwy 4**, 300-2 or std. w/ min. climb of 225' per NM to 1200.DEPARTURE PROCEDURE: **Rwy 4**, climb heading 037° to 1300 before turning west. **Rwy 22**, climb heading 217° to 1300 before turning north.NOTE: **Rwy 4**, trees beginning 2137' from DER, 539' right of centerline, up to 100' AGL/890' MSL. Trees beginning 1.6 NM from DER, 517' left of centerline, up to 100' AGL/ 1019' MSL. **Rwy 22**, trees beginning 6' from DER, 476' right of centerline up to 100' AGL/802' MSL. Trees beginning 2528' from DER 774' left of centerline, up to 100' AGL/879' MSL.**READING, PA**

READING RGNL/CARL A. SPAATZ FIELD

TAKE-OFF MINIMUMS: **Rwy 13**, 1000-1 or std. with a min. climb of 370' per NM to 1500. **Rwy 31**, 400-1 or std. with a min. climb of 350' per NM to 800. **Rwy 36**, 400-1 or std. with a min. climb of 260' per NM to 800.DEPARTURE PROCEDURE: **Rwy 18**, climb runway heading to 1400 before turning on course. **Rwys 31, 36**, climb runway heading to 800 before turning on course.

31 MAY 2012 to 28 JUN 2012

31 MAY 2012 to 28 JUN 2012

12152



TAKE-OFF MINIMUMS AND (OBSTACLE) DEPARTURE PROCEDURES

12152

REEDSVILLE, PA

MIFFLIN COUNTY (RVL)

AMDT 3 08157 (FAA)

TAKE-OFF MINIMUMS: **Rwy 6**, std. w/min. climb of 287' per NM to 3000 or 2200-3 for climb in visual conditions. **Rwy 24**, std. w/min. climb of 242' per NM to 2800 or 2200-3 for climb in visual conditions.

DEPARTURE PROCEDURE: **Rwy 6**, climb heading 059° to 3000 before proceeding on course or for climb in visual conditions cross Mifflin County Airport at or above 3000 MSL before proceeding on course. **Rwy 24**, climb heading 239° to 2800 before proceeding on course or for climb in visual conditions cross Mifflin County Airport at or above 3000 MSL before proceeding on course.

NOTE: **Rwy 6**, fence beginning 59' from departure end of runway, 497' right of centerline, up to 6' AGL/825' MSL. Bushes 449' from departure end of runway, 422' right of centerline, up to 10' AGL/829' MSL. **Rwy 24**, ground 171' from departure end of runway, 481' left of centerline, 0' AGL/830' MSL. Fence 207' from departure end of runway, 288' left of centerline, 15' AGL/834' MSL. Trees 1189' from departure end of runway, 198' right of centerline, up to 100' AGL/933' MSL. Trees 2,168' from departure end of runway, 407' left of centerline, up to 100' AGL/908' MSL.

ST. MARYS, PA

ST. MARYS MUNI

NOTE: **Rwy 10**, terrain and trees 3833' from departure end of runway, right and left of centerline, 100' AGL/2119' MSL. **Rwy 28**, terrain and trees 1926' from departure end of runway, right and left of centerline, 100' AGL/1979' MSL; terrain and trees 3754' from departure end of runway, right and left of centerline, 100' AGL/2000' MSL.

SELINGSGROVE, PA

PENN VALLEY (SEG)

AMDT 3 09351 (FAA)

TAKE-OFF MINIMUMS: **Rwy 17**, std. w/min. climb of 500' per NM to 1500 or 1500-2½ for climb in visual conditions. **Rwy 35**, 500-2 w/min. climb of 500' per NM to 1300 or 1500-2½ for climb in visual conditions.

DEPARTURE PROCEDURE: **Rwy 17**, climbing right turn direct SEG VORTAC before proceeding on course. Do not exceed 180 KIAS until SEG VORTAC, or for climb in visual conditions, cross Penn Valley airport at or above 1800 before proceeding on course. **Rwy 35**, climb heading 350° to 1900 before proceeding on course, or for climb in visual conditions, cross Penn Valley airport at or above 1800 before proceeding on course.

NOTE: **Rwy 17**, trees beginning 1.8 NM from DER, 1068' left of centerline, up to 100' AGL/919' MSL. Trees beginning 29' from DER, 151' left of centerline, up to 100' AGL/559' MSL. Pole 2520' from DER, 84' right of centerline, 58' AGL/508' MSL. **Rwy 35**, trees beginning, 273' from DER, 75' left of centerline, up to 100' AGL/539' MSL. Trees beginning 1947' from DER, 624' right of centerline, up to 100' AGL/899' MSL.

SHAMOKIN, PA

NORTHUMBERLAND COUNTY

TAKE-OFF MINIMUMS: **Rwy 8**, 400-1 or std. with a min. climb of 450' per NM to 1400. **Rwy 26**, 700-1 or std. with a min. climb of 250' per NM to 1400.

DEPARTURE PROCEDURE: **Rwy 8**, climb to 1400, then climbing left turn to 4000 direct SEG VORTAC.

Rwy 26, climb to 1400, then climb to 4000 via SEG R-088 to SEG VORTAC.

SOMERSET, PA

SOMERSET COUNTY (2G9)

AMDT 2 07354 (FAA)

TAKE-OFF MINIMUMS: **Rwy 14,32**, NA-environmental.

DEPARTURE PROCEDURE: **Rwy 7**, climb heading 066° to 3000 before turning south. **Rwy 25**, climb heading 246° to 2800 before turning south.

NOTE: **Rwy 7**, trees beginning 57' from departure end of runway, 178' right of centerline, up to 79' AGL/2285' MSL. Tree 1291' from departure end of runway, 76' left of centerline, 59' AGL/2238' MSL. Buildings beginning 639' from departure end of runway, 348' left of centerline, up to 40' AGL/2222' MSL. **Rwy 25**, trees beginning 480' from departure end of runway, 152' right of centerline, up to 67' AGL/2346' MSL. Antenna on building 283' from departure end of runway, 204' right of centerline, 30' AGL/2290' MSL. Tree 584' from departure end of runway, 211' left of centerline, 55' AGL/2297' MSL. Obstruction light on localizer 291' from departure end of runway, on centerline, 20' AGL/2284' MSL.

SPENCER, WV

BOGGS FIELD (WSW)

ORIG 09351 (FAA)

TAKE-OFF MINIMUMS: **Rwy 10**, 400-1½ or std. w/a min. climb of 498' per NM to 1300. **Rwy 28**, 300-1 or std. w/a min. climb of 411' per NM to 1200.

DEPARTURE PROCEDURE: **Rwy 28**, climb heading 280° to 1600 before turning left.

NOTE: **Rwy 10**, trees beginning 209' from DER, 48' left of centerline, up to 100' AGL/1259' MSL. Trees beginning 425' from DER, 145' right of centerline, up to 100' AGL/1199' MSL. Trees beginning 1.1 NM from DER, 397' left of centerline, up to 100' AGL/1259' MSL. **Rwy 28**, trees beginning 78' from DER, 118' right of centerline, up to 100' AGL/1119' MSL. Trees beginning 112' from DER, 60' left of centerline, up to 100' AGL/1059' MSL.

STATE COLLEGE, PA

UNIVERSITY PARK

TAKE-OFF MINIMUMS: **Rwys 16,34**, NA.

DEPARTURE PROCEDURE: **Rwys 6,24**, climb runway heading to 2600 before proceeding on course.

31 MAY 2012 to 28 JUN 2012

31 MAY 2012 to 28 JUN 2012

12152

TAKE-OFF MINIMUMS AND (OBSTACLE) DEPARTURE PROCEDURES

NE-4

TAKE-OFF MINIMUMS AND (OBSTACLE) DEPARTURE PROCEDURES

12152

STERLING, PA

SPRING HILL (70N)

AMDT 1 09323 (FAA)

TAKE-OFF MINIMUMS: **Rwy 23**, 600-3 with min. climb of 240' per NM to 2600 or 1000-3 for climb in visual conditions.

DEPARTURE PROCEDURE: **Rwy 23**, climb heading 232° to 2500 before proceeding on course or for climb in visual conditions: cross Spring Hill airport at or above 2600 MSL before proceeding on course.

NOTE: **Rwy 5**, trees beginning 333' from DER, 271' left of centerline, up to 100' AGL/1719' MSL. Building and trees beginning 259' from DER, 265' right of centerline, up to 100' AGL/1799' MSL. **Rwy 23**, trees beginning 51' from DER, 202' left of centerline, up to 100' AGL/1859' MSL. terrain and trees beginning 482' from DER, 195' right of centerline, up to 100' AGL/1879' MSL.

SUMMERSVILLE, WV

SUMMERSVILLE (SXL)

AMDT 3A 11097 (FAA)

TAKE-OFF MINIMUMS: **Rwy 4**, 400-1 or std. with a min. climb of 350' per NM to 3000.

DEPARTURE PROCEDURE: **Rwy 4**, climb heading 044° to 2900 before proceeding on course. **Rwy 22**, climb heading 224° to 2400 before proceeding on course.

SUTTON, WV

BRAXTON COUNTY

TAKE-OFF MINIMUMS: **Rwy 1**, 300-1 with a min. climb of 245' per NM to 2100 or 1100-2½ for climb in visual conditions. **Rwy 19**, NA-obstacles.

DEPARTURE PROCEDURE: **Rwy 1**, climb via heading 014° to 2100 before proceeding on course. For climb in visual conditions, cross Braxton County Airport at or above 2200.

NOTE: **Rwy 1**, Road 798' from departure end of runway, 498' right of centerline, 15' AGL/1334' MSL. Trees 1160' from departure end of runway, 533' left of centerline, up to 100' AGL/1439' MSL. Trees, 3257' from departure end of runway, 1194' left of centerline, up to 100' AGL/1479' MSL. Trees, 4449' from departure end of runway, 955' left of centerline, up to 100' AGL/1539' MSL. Powerline tower, 4549' from departure end of runway, 342' left of centerline, 70' AGL/1429' MSL.

TITUSVILLE, PA

TITUSVILLE

NOTE: **Rwy 18**, trees beginning 1865' from departure end of runway, 199' right of centerline, up to 100' AGL/1589' MSL. Trees beginning 1313' from departure end of runway, on centerline, up to 100' AGL/1609' MSL. Trees beginning 872' from departure end of runway, 194' left of centerline, up to 100' AGL/1619' MSL. **Rwy 36**, trees beginning 2798' from departure end of runway, 217' right of centerline, up to 100' AGL/1689' MSL. Trees beginning 2806' from departure end of runway, 47' left of centerline, up to 100' AGL/1736' MSL.

TOUGHKENAMON, PA

NEW GARDEN

TAKE-OFF MINIMUMS: **Rwy 6**, 300-1.

DEPARTURE PROCEDURE: **Rwys 6, 24**, climb runway heading to 900 before turning on course.

12152

TOWANDA, PA

BRADFORD COUNTY

TAKE-OFF MINIMUMS: **Rwy 5**, 900-2 or std. with a min. climb of 380' per NM to 2000. **Rwy 23**, 1600-2 or std. with a min. climb of 580' per NM to 2800.

DEPARTURE PROCEDURE: **Rwy 5**, climb heading 047° to 3000 before proceeding on course. **Rwy 23**, climb heading 227° to 3000 before proceeding on course.

NOTE: **Rwy 5**, trees 12386' from departure end of runway, 3511' left of centerline, 100' AGL/1462' MSL. **Rwy 23**, trees 10099' from departure end of runway, 1892' left of centerline, 100' AGL/1203' MSL.

TOWER CITY, PA

BENDIGO (74N)

ORIG 09183 (FAA)

TAKE-OFF MINIMUMS: **Rwy 5**, std. w/ min. climb of 518' per NM to 2200 or 1700-2 for climb in visual conditions. **Rwy 23**, NA-terrain.

DEPARTURE PROCEDURE: **Rwy 5**, departure NA at night. Climb heading 054° to 2200 before proceeding on course or for climb in visual conditions: cross Bendigo airport at or above 2300 before proceeding on course. Do not exceed 180 KIAS until crossing Bendigo airport on course.

NOTE: **Rwy 5**, multiple trees beginning 330' from DER, 45' left of centerline, up to 100' AGL/919' MSL. Multiple trees beginning 355' from DER, 81' right of centerline, up to 100' AGL/879' MSL. Multiple towers beginning 2.1 NM from DER, 2384' left of centerline, up to 200' AGL/1559' MSL.

WASHINGTON, PA

WASHINGTON COUNTY

TAKE-OFF MINIMUMS: **Rwy 9**, 700-2½ or std. with a min. climb of 475' per NM to 2100. **Rwy 27**, 300-1½ or std. with a min. climb of 490' per NM to 1500.

NOTE: **Rwy 9**, multiple trees beginning 2968' from departure end of runway, 780' right of centerline, up to 109' AGL/1308' MSL. Multiple trees beginning 5232' from departure end of runway, 459' left of centerline, up to 105' AGL/1380' MSL. Multiple trees beginning 1.2 NM from departure end of runway, 13' left of centerline, up to 117' AGL/1392' MSL. Multiple trees beginning 1.2 NM from departure end of runway, 687' right of centerline, up to 122' AGL/1461' MSL. Multiple trees and towers beginning 1.8 NM from departure end of runway, 1012' right of centerline, up to 213' AGL/1721' MSL. **Rwy 27**, multiple trees beginning 187' from departure end of runway, 132' left of centerline, up to 36' AGL/1195' MSL. Multiple trees beginning 267' from departure end of runway, 146' right of centerline, up to 55' AGL/1244' MSL. Multiple trees and poles beginning 1173' from departure end of runway, 29' left of centerline, up to 80' AGL/1414' MSL. Multiple trees and pole beginning 1362' from departure end of runway, 221' right of centerline, up to 65' AGL/1367' MSL. Multiple trees and towers beginning 1.2 NM from departure end of runway, 801' right of centerline, up to 83' AGL/1422' MSL.

31 MAY 2012 to 28 JUN 2012

31 MAY 2012 to 28 JUN 2012

TAKE-OFF MINIMUMS AND (OBSTACLE) DEPARTURE PROCEDURES

NE-4



12152

WAYNESBURG, PA

GREENE COUNTY (WAY)

ORIG 08269 (FAA)

TAKE-OFF MINIMUMS: **Rwy 9**, NA-obstacle. **Rwy 27**, 300-1 or Std. w/ min. climb of 447' per NM to 1300.

DEPARTURE PROCEDURE: **Rwy 27**, climb heading 268° to 1800 before proceeding on course.

NOTE: **Rwy 27**, trees beginning 332' from departure end of runway, 315' left of centerline, up to 100' AGL/1119' MSL. Trees beginning 332' from departure end of runway, 360' right of centerline, up to 100' AGL/1239' MSL. Pole/sign 1672' from departure end of runway, 623' left of centerline, 80' AGL/1148' MSL.

WELLSBORO, PA

WELLSBORO JOHNSTON

TAKE-OFF MINIMUMS: **Rwy 10**, 300-1. **Rwy 28**, 600-2 or std. with a min. climb of 240' per NM to 2700.

DEPARTURE PROCEDURE: **Rwy 10**, climbing right turn direct SFK VOR/DME. **Rwy 28**, climbing left turn direct SFK VOR/DME. All aircraft cross SFK VOR/DME at or above 3000, if not at 3000, continue climb in SFK VOR/DME holding pattern to 3000 before proceeding on course (Hold SW, right turns, 036° inbound).

NOTE: **Rwy 10**, 79' AGL trees 1600' from departure end of runway, on centerline.

WEST CHESTER, PA

BRANDYWINE

TAKE-OFF MINIMUMS: **Rwy 27**, 300-1 or std. with a min. climb of 240' per NM to 700.

NOTE: **Rwy 27**, 100' AGL trees 3800' from departure end of runway, on centerline.

WHEELING, WV

WHEELING OHIO COUNTY

NOTE: **Rwy 3**, tree 95' from departure end of runway, 315' right of centerline, 13' AGL/1213' MSL. Tree 351' from departure end of runway, 264' left of centerline, 48' AGL/1227' MSL. Obstruction light on antenna 96' from departure end of runway, 240' left of centerline, 9' AGL/1208' MSL. Obstruction light on transmission tower 5596' from departure end of runway, 1128' right of centerline, 100' AGL/1341' MSL. **Rwy 16**, pole 125' from departure end of runway, 241' left of centerline, 4' AGL/1203' MSL. Pole 264' from departure end of runway, 261' right of centerline, 6' AGL/1205' MSL. Post 267' from departure end of runway, 242' left of centerline, 19' AGL/1198' MSL. Tree 299' from departure end of runway, 273' left of centerline, 46' AGL/1225' MSL. **Rwy 34**, multiple trees beginning 460' from departure end of runway, 402' right of centerline, up to 46' AGL/1225' MSL. Obstruction light on antenna 436' from departure end of runway, 599' left of centerline, 45' AGL/1224' MSL.

WILKES-BARRE/SCRANTON, PA

WILKES-BARRE/SCRANTON INTL

TAKE-OFF MINIMUMS: **Rwy 4**, 300-1½ or std. with a min. climb of 240' per NM to 1300. **Rwy 10**, NA-obstacles. **Rwy 22**, 400-2 or std. with a min. climb of 240' per NM to 1400.

DEPARTURE PROCEDURE: **Rwy 4**, climb via heading 044° and LHY R-255 to cross LHY VORTAC at or above 3000 before proceeding on course. **Rwy 22**, fly heading 224° to 1400, then climbing right turn via heading 250° and LVZ R-287 to 3000 before proceeding on course. **Rwy 28**, fly heading 283° to 1400, then climbing left turn via heading 250° and LVZ R-287 to 3000 before proceeding on course.

NOTE: **Rwy 4**, tower 4380' from departure end of runway, 414' left of centerline, 114' AGL/1026' MSL. Tree 1 NM from departure end of runway, 1647' left of centerline, 85' AGL/1064' MSL. Tree 1.3 NM from departure end of runway, 468' left of centerline, 100' AGL/1139' MSL. **Rwy 22**, tower 1.8 NM from departure end of runway, 2177' right of centerline, 352' AGL/1293' MSL.

WILLIAMSON, WV

MINGO COUNTY RGNL (EBD)

ORIG 11237 (FAA)

TAKE-OFF MINIMUMS: **Rwy 8**, 500-2¼. **Rwy 26**, 300-2. NA at night.

DEPARTURE PROCEDURE: **Rwy 8**, climb heading 077° to 2700 before proceeding on course. **Rwy 26**, climb heading 257° to 2400 before proceeding on course.

NOTE: **Rwy 8**, trees and high terrain beginning at DER, 77' right of centerline, up to 100' AGL/1998' MSL. Trees beginning 347' from DER, 185' left of centerline, up to 100' AGL/1998' MSL. **Rwy 26**, trees beginning 11' from DER, 35' left of centerline, up to 100' AGL/1927' MSL. Trees beginning 864' from DER, 79' right of centerline, up to 100' AGL/1998' MSL.

31 MAY 2012 to 28 JUN 2012

31 MAY 2012 to 28 JUN 2012

12152



NE-4



12152

WILLIAMSPORT, PA

WILLIAMSPORT RGNL (IPT)

AMDT 5 11237 (FAA)

TAKE-OFF MINIMUMS: **Rwy 9**, std. w/min. climb of 332' per NM to 1600, or 300-2 w/min. climb of 287' per NM to 2000 or 2200-3 for climb in visual conditions. **Rwy 12**, std. w/min. climb of 475' per NM to 1000 or 2200-3 for climb in visual conditions. **Rwy 27**, std. w/min. climb of 467' per NM to 1000 or 2200-3 for climb in visual conditions. **Rwy 30**, std. w/min. climb of 410' per NM to 1400, or 300-1½ w/min. climb of 285' per NM to 1900 or 2200-3 for climb in visual conditions.

DEPARTURE PROCEDURE: **Rwy 9**, climb heading 087° to 2300 before proceeding on course or for climb in visual conditions, cross Williamsport RGNL Airport at or above 2600 before proceeding on course. **Rwy 12**, climbing left turn heading 090° to 2400 before proceeding on course or for climb in visual conditions, cross Williamsport RGNL Airport at or above 2600 before proceeding on course. **Rwy 27**, climbing right turn heading 285° to 2700 before proceeding on course or for climb in visual conditions, cross Williamsport RGNL Airport at or above 2600 before proceeding on course. **Rwy 30**, climb heading 296° to 2500 before proceeding on course or for climb in visual conditions, cross Williamsport RGNL Airport at or above 2600 before proceeding on course.

NOTE: **Rwy 9**, trains on railroad tracks beginning 171' from DER, left and right of centerline, up to 23' AGL/554' MSL. Trees beginning 240' from DER, left and right of centerline, up to 100' AGL/680' MSL. Fence 252' from DER, 437' right of centerline, 11' AGL/532' MSL. Multiple poles and buildings beginning 285' from DER, left and right of centerline, up to 65' AGL/566' MSL. Antenna, hazard beacon and trees beginning 5251' from DER, 1071' right of centerline, up to 100' AGL/784' MSL. Rising terrain and trees beginning 1.1 NM from DER, 132' left of centerline, up to 100' AGL/1659' MSL. Tower 1.6 NM from DER, 1034' left of centerline, 96' AGL/736' MSL. **Rwy 12**, trees beginning 4' from DER, 305' right of centerline, up to 55' AGL/596' MSL. Lights, trees and poles beginning 276' from DER, 65' left of centerline, up to 62' AGL/603' MSL. Trees, hazard beacon and antenna beginning 5791' from DER, 985' left of centerline, up to 100' AGL/744' MSL. **Rwy 27**, rising terrain beginning 7' from DER, 83' left of centerline, up to 515' MSL. Trees beginning 701' from DER, left and right of centerline, up to 100' AGL/773' MSL. Localizer antenna 437' from DER, on centerline, 6' AGL/525' MSL. Light on building 531' from DER, 302' right of centerline, 18' AGL/537' MSL. **Rwy 30**, fence 100' from DER, 345' left of centerline, 10' AGL/531' MSL. Cars on roadway beginning 212' from DER, left and right of centerline, up to 15' AGL/539' MSL. Poles and signs beginning 328' from DER, 357' right of centerline, up to 69' AGL/589' MSL. Trees beginning 606' from DER, left and right of centerline, up to 100' AGL/777' MSL. Towers, trees and poles beginning 2562' from DER, left and right of centerline, up to 88' AGL/764' MSL.

YORK, PA

YORK (THV)

AMDT 1 11013 (FAA)

TAKE-OFF MINIMUMS: **Rwy 17**, 300-1¼ or std. w/min. climb of 473' per NM to 800. **Rwy 35**, 300-1 or std. w/min. climb of 393' per NM to 800.

DEPARTURE PROCEDURE: **Rwy 17**, climb heading 166° to 1100 before turning right.

NOTE: **Rwy 17**, terrain, catenary ball, vehicles on road, fences, poles, buildings, and trees beginning 2' from DER, 9' left of centerline, up to 46' AGL/645' MSL. Terrain, vehicles on road, fences, poles, buildings, and trees beginning 38' from DER, 12' right of centerline, up to 41' AGL/645' MSL. Trees 2680' from DER, 467' left of centerline, up to 54' AGL/653' MSL. Trees 6013' from DER, 974' right of centerline, up to 84' AGL/713' MSL. Trees 1 NM from DER, 710' right of centerline, up to 71' AGL/670' MSL. **Rwy 35**, terrain, building, poles, and trees beginning 32' from DER, 5' left of centerline up to 104' AGL/623' MSL. Terrain, fence, building, and trees beginning 18' from DER, 8' right of centerline, up to 88' AGL/627' MSL. Trees 3325' from DER, 514' right of centerline, up to 80' AGL/639' MSL. Trees 3789' from DER, 1049' left of centerline, up to 101' AGL/660' MSL. Trees 4121' from DER, 763' left of centerline, up to 109' AGL/628' MSL.

ZELIENOPE, PA

ZELIENOPE MUNI (PJC)

AMDT 3 08269 (FAA)

TAKE-OFF MINIMUMS: **Rwys 17,35**, 1100-2½ for climb in visual conditions.

DEPARTURE PROCEDURE: **Rwys 17,35**, for climb in visual conditions: cross Zeliеноpe Muni at or above 1900' before proceeding on course.

NOTE: **Rwy 17**, terrain and trees beginning 1.23 NM from departure end of runway, 1272' left of centerline, up to 100' AGL/1339' MSL. Vehicle on road beginning 18' from departure end of runway, 378' left of centerline, up to 15' AGL/946' MSL. Brush 278' from departure end of runway, 204' left of centerline, 21' AGL/921' MSL. Vehicle on road 451' from departure end of runway, 593' right of centerline, 15' AGL/946' MSL. Trees beginning 2442' from departure end of runway, 1110' right of centerline, up to 100' AGL/1299' MSL. Power lines beginning 3648' from departure end of runway, 644' right of centerline, up to 79' AGL/1046' MSL. Trees beginning 1.27 NM from departure end of runway, 477' right of centerline, up to 100' AGL/1359' MSL. **Rwy 35**, terrain and trees beginning 1.04 NM from departure end of runway, 1400' left of centerline, up to 100' AGL/1259' MSL. Trees 805' from departure end of runway, 287' right of centerline, 120' AGL/1014' MSL. Vehicle on road 161' from departure end of runway, 524' right of centerline, 15' AGL/946' MSL.

31 MAY 2012 to 28 JUN 2012

31 MAY 2012 to 28 JUN 2012

12152



NE-4

PITTSBURGH APP CON
121.25 337.4
BEAVER COUNTY ATIS
118.35
PITTSBURGH INTL ATIS
APR 127.25
BUTLER COUNTY/
KW SCHOLTER FIELD
AWOS-3 133.825

YOUNGSTOWN
109.0 YNG
Chan 27
N41°19.86'
W80°40.48'
L-30, H-10

CUTTA
N40°52.58'-W80°38.59'
TURBOJET VERTICAL NAVIGATION
PLANNING INFORMATION
PIT WEST FLOW:
Expect clearance to cross at 10,000'
PIT EAST FLOW:
Expect clearance to cross at 10,000'
and at 250 KTS

AKRON
114.4 ACO
Chan 91
N41°06.47'
W81°12.09'
L-30, H-10

ELLWOOD CITY
115.8 EWC
Chan 105
N40°49.50'
W80°12.69'

BRIGGS
112.4 BSV
Chan 71
N40°44.44'
W81°25.93'
L-29, H-10

LOCALIZER 109.3
I-BVI

PITTSBURGH INTL
MONTOUR
112.0 MMJ
Chan 57
N40°29.29'-W80°11.63'

NE-4, 31 MAY 2012 to 28 JUN 2012

NE-4, 31 MAY 2012 to 28 JUN 2012

NOTE: The BSV transition is for low altitude use of 8000 feet and below.

NOTE: Chart not to scale.

AKRON TRANSITION (ACO.CUTTA2): From over ACO VOR/DME via ACO R-123 to CUTTA INT. Thence. . . .

BRIGGS TRANSITION (BSV.CUTTA2): From over BSV VOR/DME via BSV R-081 to CUTTA INT. Thence. . . .

YOUNGSTOWN TRANSITION (YNG.CUTTA2): From over YNG VORTAC via

YNG R-182 to CUTTA INT. Thence. . . .

. . . . From over CUTTA INT:

PIT arrivals expect radar vectors.

BVI (EAST FLOW) direct HADJI


(WEST FLOW) direct EWC


BTP and O2G direct EWC


GRACE THREE ARRIVAL

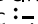
PITTSBURGH, PENNSYLVANIA

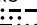
PITTSBURGH APP CON
 124.15 363.8
 BEAVER COUNTY ATIS
 118.35
 PITTSBURGH INTL ATIS
 ARR 127.25
 BUTLER COUNTY/K. W. SCHOLTER FIELD
 AWOS-3 133.825

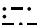
FRANKLIN
 109.6 FKL 


CLARION
 112.9 CIP 
 Chan 76
 N41°08.78'
 W79°27.48'
 L-30, H-10-12

SLATE RUN
 113.9 SLT 
 Chan 86
 N41°30.77'
 W77°58.21'
 L-30, H-10-12

ELLWOOD CITY
 115.8 EWC 
 Chan 105
 N40°49.50'
 W80°12.69'

PHILIPSBURG
 115.5 PSB 
 Chan 102
 N40°54.98'
 W77°59.56'
 L-30, H-10-12

REVLOC
 110.6 REC 
 Chan 43

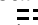
JOHNSTOWN
 113.0 JST 
 Chan 77

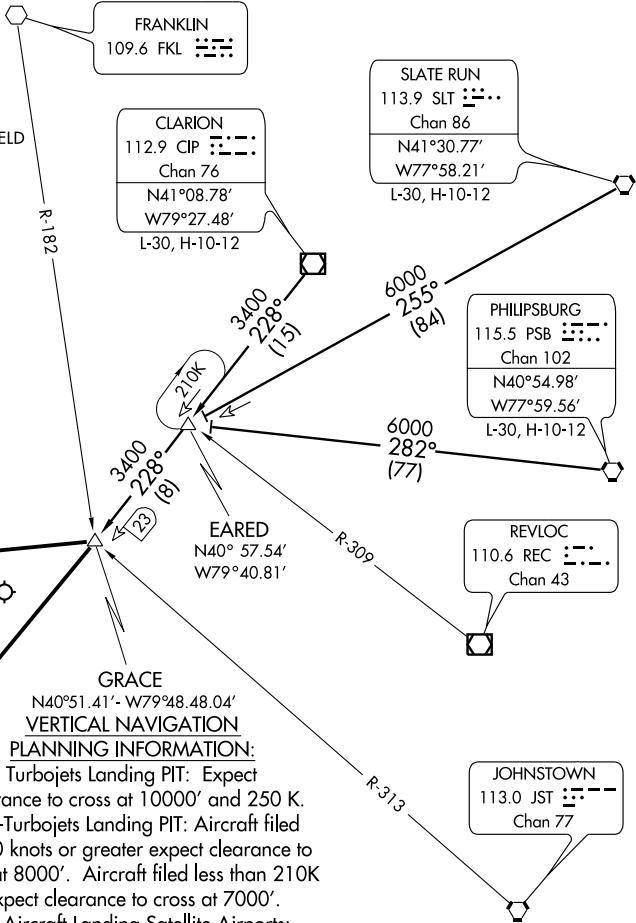
BUTLER COUNTY/
 K. W. SCHOLTER FIELD

BEAVER COUNTY

COLUMBIANA COUNTY

PITTSBURGH INTL

MONTOUR
 112.0 MMJ 
 Chan 57
 N40°29.29'-W80°11.63'



GRACE
 N40°51.41'-W79°48.48.04'
**VERTICAL NAVIGATION
 PLANNING INFORMATION:**
 Turbojets Landing PIT: Expect
 clearance to cross at 10000' and 250 K.
 Non-Turbojets Landing PIT: Aircraft filed
 at 210 knots or greater expect clearance to
 cross at 8000'. Aircraft filed less than 210K
 expect clearance to cross at 7000'.
 All Aircraft Landing Satellite Airports:
 Expect clearance to cross at 5000'.

NOTE: Chart not to scale.

ARRIVAL DESCRIPTION

CLARION TRANSITION (CIP.GRACE3): From over CIP VOR/DME via CIP R-228 to GRACE INT. Thence....

PHILIPSBURG TRANSITION (PSB.GRACE3): From over PSB VORTAC via PSB R-282 to EARED INT, then via CIP R-228 to GRACE INT. Thence....

SLATE RUN TRANSITION (SLT.GRACE3): From over SLT VORTAC via SLT R-255 to EARED INT, then via CIP R-228 to GRACE INT. Thence....

....From over GRACE INT:

- Direct MMJ, direct Pittsburgh Intl. Expect vectors after GRACE INT.
- Direct EWC, direct Beaver County.
- Direct EWC, direct Bulter County/K. W. Scholter Field.
- Direct EWC, direct Columbiana County.

GRACE THREE ARRIVAL

PITTSBURGH, PENNSYLVANIA

NE-4, 31 MAY 2012 to 28 JUN 2012

NE-4, 31 MAY 2012 to 28 JUN 2012

HAYNZ THREE ARRIVAL (RNAV)
(HAYNZ.HAYNZ3) 11349

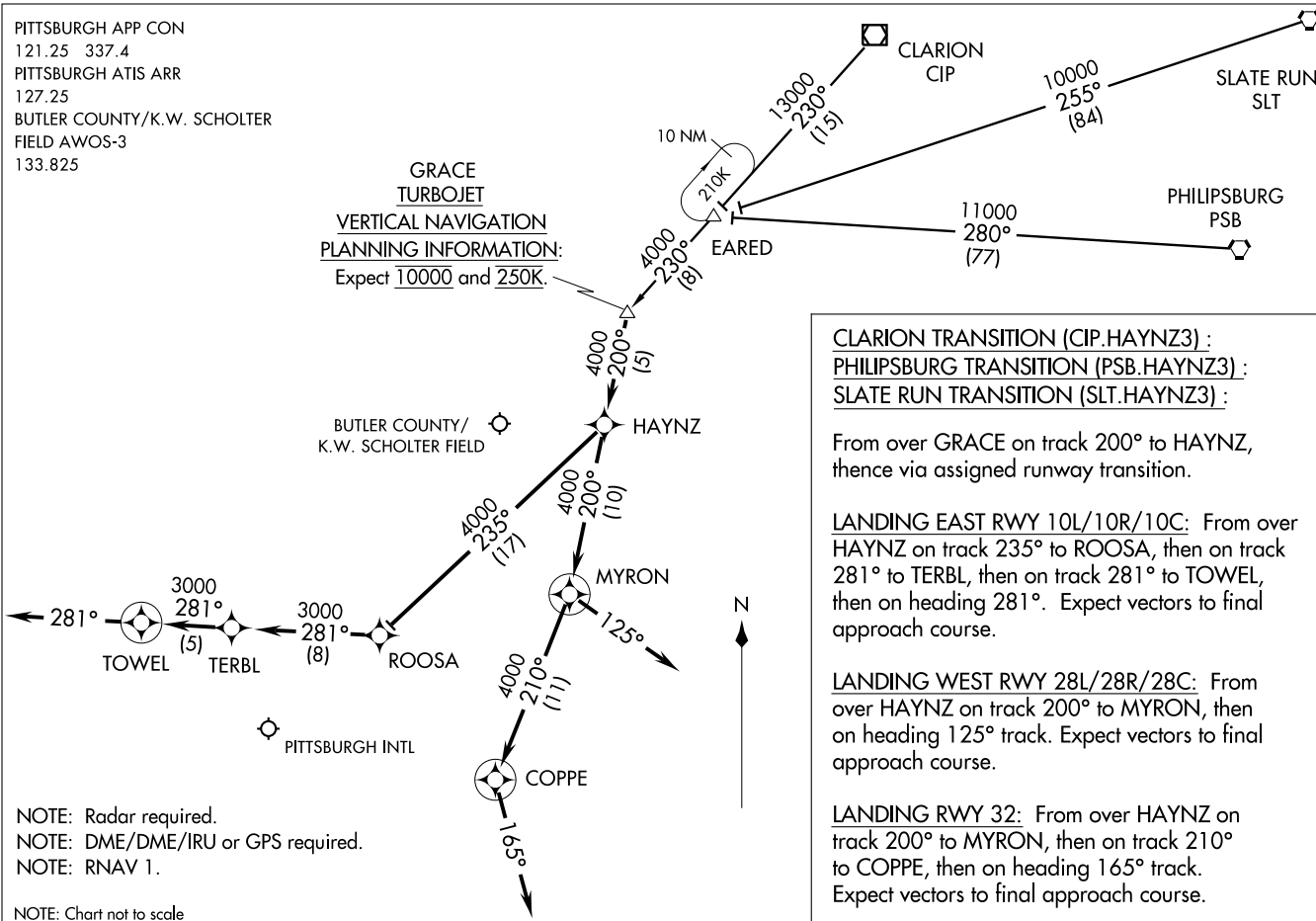
(HAYNZ.HAYNZ3) 11349
HAYNZ THREE ARRIVAL (RNAV)

ST-570 (FAA)

PITTSBURGH, PENNSYLVANIA

PITTSBURGH APP CON
121.25 337.4
PITTSBURGH ATIS ARR
127.25
BUTLER COUNTY/K.W. SCHOLTER
FIELD AWOS-3
133.825

GRACE
TURBOJET
VERTICAL NAVIGATION
PLANNING INFORMATION:
Expect 10000 and 250K.



CLARION TRANSITION (CIP.HAYNZ3) :
PHILIPSBURG TRANSITION (PSB.HAYNZ3) :
SLATE RUN TRANSITION (SLT.HAYNZ3) :

From over GRACE on track 200° to HAYNZ, thence via assigned runway transition.

LANDING EAST RWY 10L/10R/10C: From over HAYNZ on track 235° to ROOSA, then on track 281° to TERBL, then on track 281° to TOWEL, then on heading 281°. Expect vectors to final approach course.

LANDING WEST RWY 28L/28R/28C: From over HAYNZ on track 200° to MYRON, then on heading 125° track. Expect vectors to final approach course.

LANDING RWY 32: From over HAYNZ on track 200° to MYRON, then on track 210° to COPPE, then on heading 165° track. Expect vectors to final approach course.

NOTE: Radar required.
NOTE: DME/DME/IRU or GPS required.
NOTE: RNAV 1.

NOTE: Chart not to scale

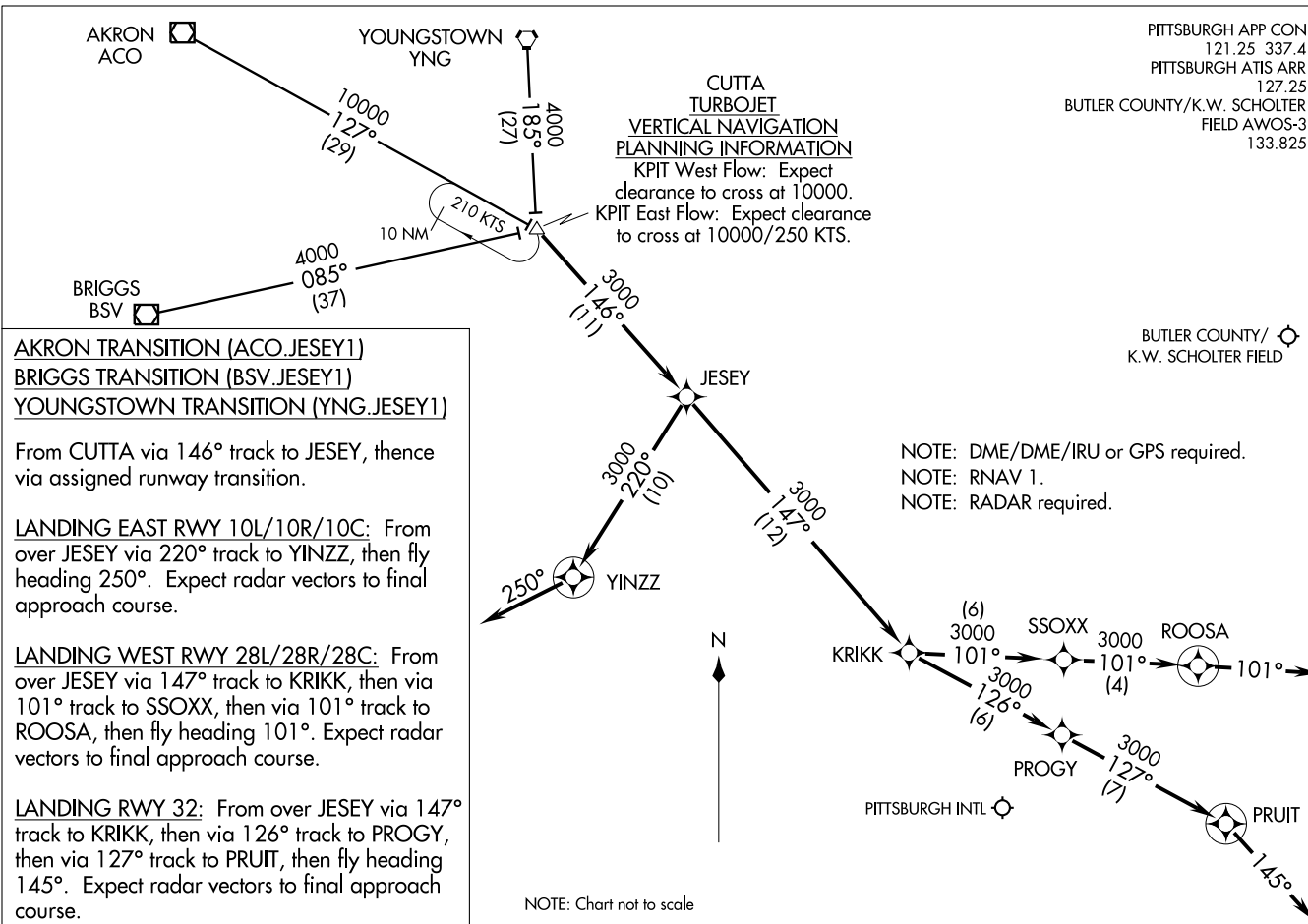
PITTSBURGH, PENNSYLVANIA

JESEY ONE ARRIVAL (RNAV)
(JESEY.JESEY1) 09351

(JESEY.JESEY1) 09351
JESEY ONE ARRIVAL (RNAV)

ST-570 (FAA)

PITTSBURGH, PENNSYLVANIA



PITTSBURGH, PENNSYLVANIA