

**TOP ALTITUDE:
ASSIGNED BY ATC**

VANCOUVER
115.9 YVR Chan 106
N49°04.64'-W123°08.94'
L-1, H-1

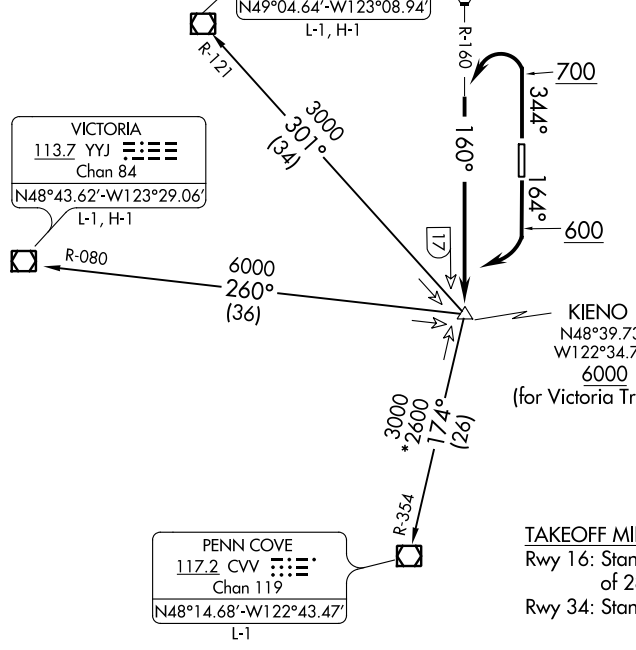
WHATCOM
113.0 HUH Chan 77

ATIS 134.45
GND CON 127.4 379.3
BELLINGHAM TOWER ★ 124.9 379.3
VICTORIA DEP CON 132.7 290.8

VICTORIA
113.7 YYJ Chan 84
N48°43.62'-W123°29.06'
L-1, H-1

PENN COVE
117.2 CVV Chan 119
N48°14.68'-W122°43.47'
L-1

KIENO
N48°39.73'
W122°34.75'
6000
(for Victoria Transition)



TAKEOFF MINIMUMS
Rwy 16: Standard with minimum climb of 282' per NM to 2500.
Rwy 34: Standard.

- NOTE: Chart not usable for TACAN aircraft.
- NOTE: DME or RADAR required for VICTORIA TRANSITION.
- NOTE: Aircraft on the VICTORIA TRANSITION must climb-in-hold at KIENO to 6000 before continuing to VICTORIA VOR/DME, hold N, RT, 160° inbound.
- NOTE: Chart not to scale.

DEPARTURE ROUTE DESCRIPTION

TAKEOFF RUNWAY 16: Climb on heading 164° to 600, then climbing right turn to intercept HUH R-160 to KIENO, Thence. . . .

TAKEOFF RUNWAY 34: Climb on heading 344° to 700, then climbing left turn to intercept HUH R-160 to KIENO, Thence. . . .

. . . .Maintain assigned transition altitude, expect requested altitude within 10 minutes.

PENN COVE TRANSITION (KIENO5.CVV): From over KIENO on CVV R-354 to CVV VOR/DME.

VANCOUVER TRANSITION (KIENO5.YVR): From over KIENO on YVR R-121 to YVR VOR/DME

VICTORIA TRANSITION (KIENO5.YYJ): From over KIENO on YYJ R-080 to YYJ VOR/DME.

NW-1, 07 DEC 2017 to 04 JAN 2018

NW-1, 07 DEC 2017 to 04 JAN 2018