

LOC/DME I-BFT 109.75 Chan 34 (Y)	APP CRS 245°	Rwy Idg 24R 6003 24L 5199 TDZE 583 584 Apt Elev 583 583
--	------------------------	---

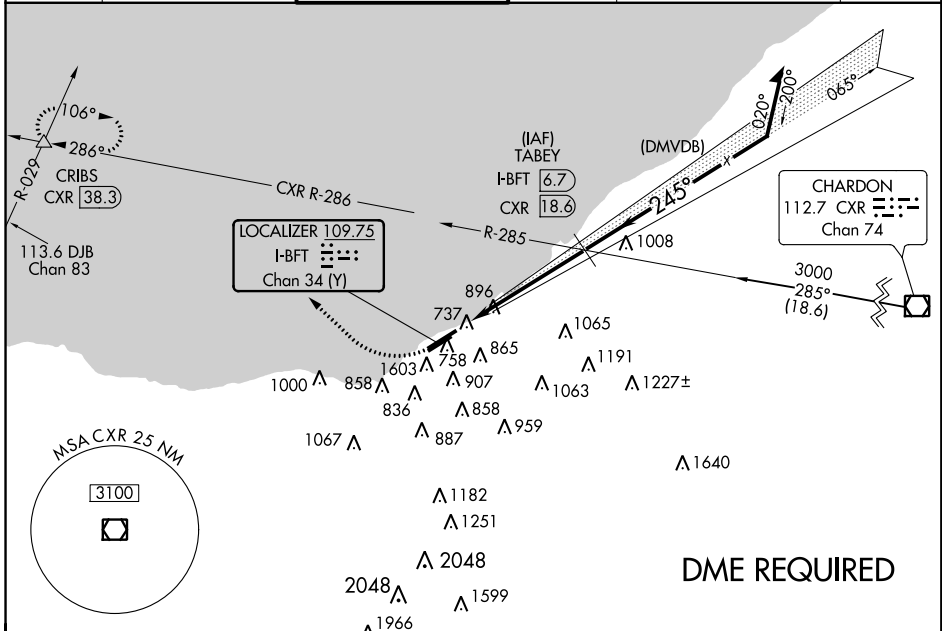
ILS or LOC RWY 24R

BURKE LAKEFRONT (BKL)

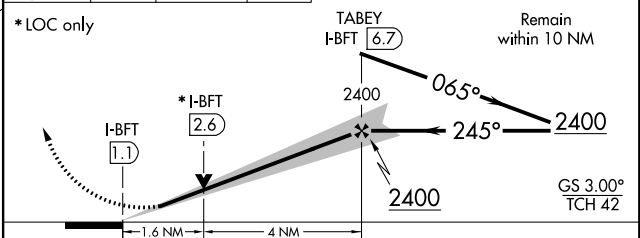
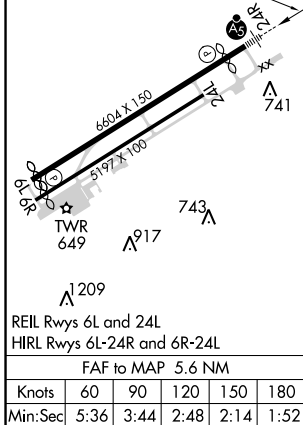
⚠ Helicopter visibility reduction below 3/4 SM NA. Use local altimeter setting. For inoperative MALSF, increase S-ILS 24R all Cats visibility to 1 1/2 mile. Circling NA southeast of Rwy 6R and 24L. **⚠** -23°C/-9°F S-ILS minimums NA when control tower closed.

MALS MISSED APPROACH: Climbing right turn to 2000 via heading 350° to CXR VOR/DME R-286 then climb to 3000 via CXR VOR/DME R-286 to CRIBS Int and hold.

ATIS 125.25	CLEVELAND APP CON 125.35 354.025	LAKEFRONT TOWER ★ 124.3 (CTAF) 0 339.8	GND CON 121.9	CLNC DEL 121.9 (when tower closed)	UNICOM 122.95
-----------------------	--	--	-------------------------	--	-------------------------



ELEV 583	D TDZE 24R 583 TDZE 24L 584	2000 CX R-286	3000 CX R-286	CRIBS △	VGSI and ILS glidepath not coincident.
----------	---------------------------------------	------------------	------------------	------------	--



CATEGORY	A	B	C	D
S-ILS 24R	903-3/4 320 (400-3/4)			
S-LOC 24R	1160-3/4	577 (600-3/4)	1160-1 3/8	577 (600-1 3/8)
SIDESTEP 24L	1160-1	576 (600-1)	1160-1 5/8	576 (600-1 5/8)
CIRCLING	1160-1	577 (600-1)	1160-1 5/8 577 (600-1 5/8)	1160-2 577 (600-2)

WAAS CH 77621 W24A	APP CRS 245°	Rwy Idg THRE 582 Apt Elev 583
--	------------------------	---

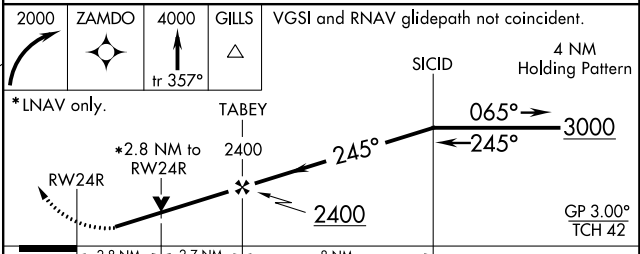
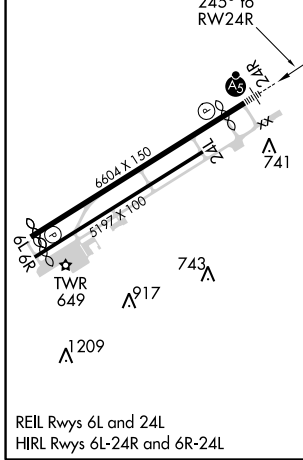
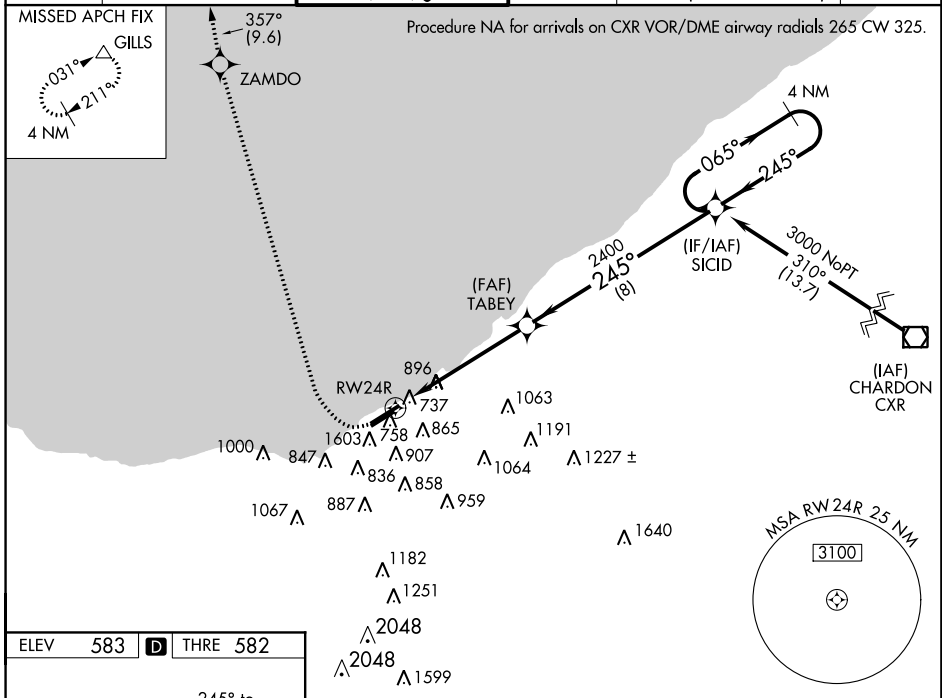
RNAV (GPS) RWY 24R

BURKE LAKEFRONT (BKL)

NA For uncompensated Baro-VNAV systems, LNAV/VNAV NA below -16°C (4°F) or above 40°C (104°F). DME/DME RNP-0.3 NA. Visibility reduction by helicopters NA. Use local climeter setting, when not received procedure NA. Circling NA southeast of Rwy 6R and 24L. For inoperative MALSF increase LNAV Cat A and B visibility to 1½ miles. ** Missed approach requires a minimum climb of 421 feet per NM to 1900.

MALSRS MISSED APPROACH: Climbing right turn to 2000 direct ZAMDO then climb to 4000 on track 357° to GILLS and hold.

ATIS 125.25	CLEVELAND APP CON 125.35 354.025	LAKEFRONT TOWER * 124.3 (CTAF) 0 339.8	GND CON 121.9	CLNC DEL (when tower closed) 121.9	UNICOM 122.95
-----------------------	--	--	-------------------------	---	-------------------------



CATEGORY	A	B	C	D
LPV DA	1057-1 ³ / ₈ 475 (500-1 ³ / ₈)	1069-1 ³ / ₈ 487 (500-1 ³ / ₈)	1251-2 669 (700-2)	1339-2 ¹ / ₂ 757 (800-2 ¹ / ₂)
** LPV DA	NA			
LNAV/VNAV DA	1245-2	663 (700-2)	1305-2 ¹ / ₄ 723 (800-2 ¹ / ₄)	1324-2 ¹ / ₂ 742 (800-2 ¹ / ₂)
LNAV MDA	1620-1 1038 (1100-1)	1620-1 ¹ / ₄ 1038 (1100-1 ¹ / ₄)	1620-2 ¹ / ₂	1038 (1100-2 ¹ / ₂)
CIRCLING	1620-1 ¹ / ₄	1037 (1100-1 ¹ / ₄)	1620-3	1037 (1100-3)

EC-2: 09 NOV 2017 to 07 DEC 2017

EC-2: 09 NOV 2017 to 07 DEC 2017