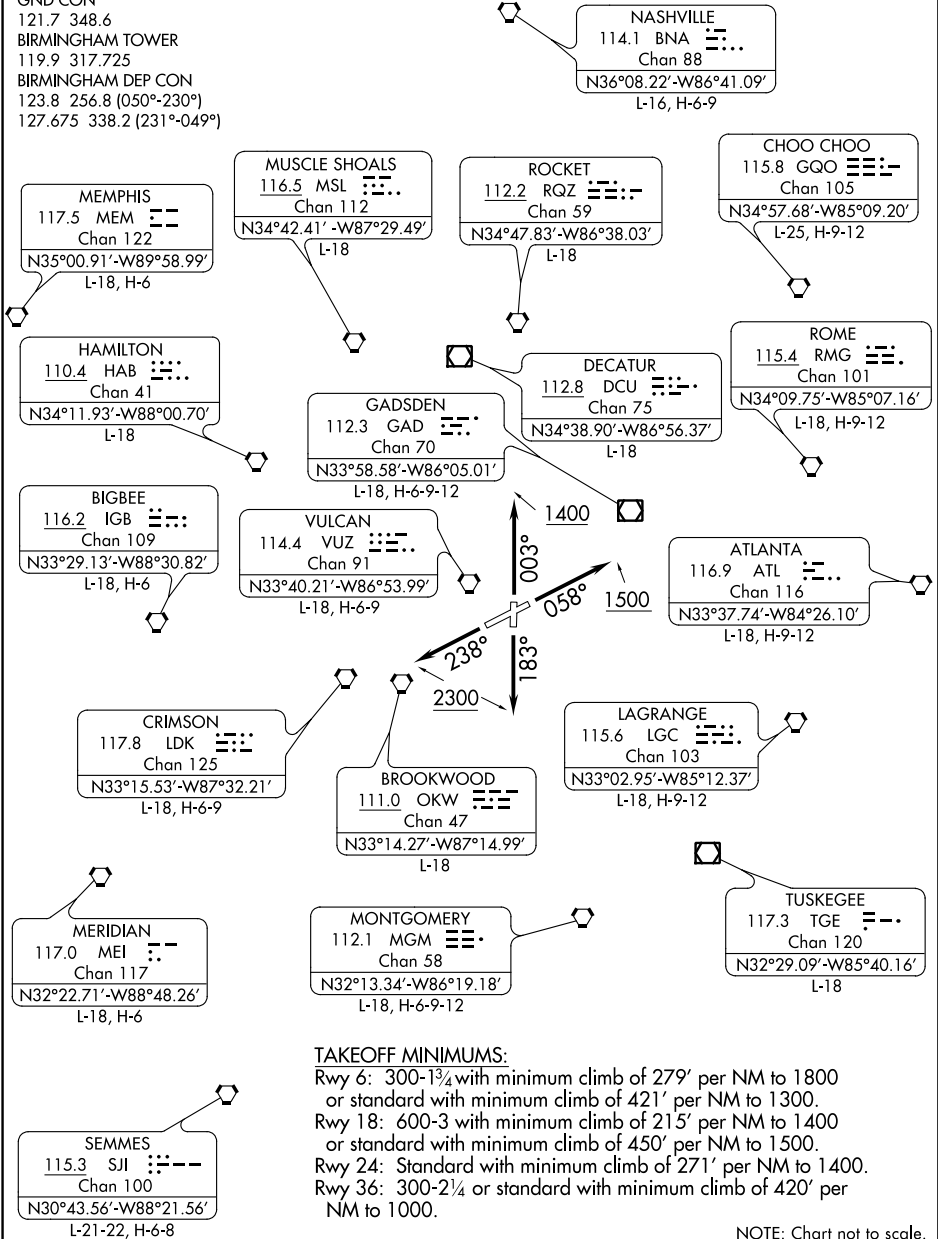


ATIS  
119.4 270.1  
CLNC DEL  
125.675 305.2  
GND CON  
121.7 348.6  
BIRMINGHAM TOWER  
119.9 317.725  
BIRMINGHAM DEP CON  
123.8 256.8 (050°-230°)  
127.675 338.2 (231°-049°)

(NARRATIVE ON FOLLOWING PAGE)

NOTE: Radar required.

**TOP ALTITUDE:  
4000**



SE-4, 27 APR 2017 to 25 MAY 2017

SE-4, 27 APR 2017 to 25 MAY 2017

**TAKEOFF MINIMUMS:**

- Rwy 6: 300-1¾ with minimum climb of 279' per NM to 1800 or standard with minimum climb of 421' per NM to 1300.
- Rwy 18: 600-3 with minimum climb of 215' per NM to 1400 or standard with minimum climb of 450' per NM to 1500.
- Rwy 24: Standard with minimum climb of 271' per NM to 1400.
- Rwy 36: 300-2¼ or standard with minimum climb of 420' per NM to 1000.

NOTE: Chart not to scale.



**DEPARTURE ROUTE DESCRIPTION**

TAKEOFF RWY 6: Climb heading 058° to 1500, thence . . . .

TAKEOFF RWY 18: Climb heading 183° to 2300, thence . . . .

TAKEOFF RWY 24: Climb heading 238° to 2300, thence . . . .

TAKEOFF RWY 36: Climb heading 003° to 1400, thence . . . .

. . . . Expect vectors to filed route. Maintain 4000 or assigned lower altitude. Expect clearance to filed altitude ten minutes after departure.

TAKEOFF OBSTACLE NOTES:

Rwy 6: Tree 1456' from DER, 854' right of centerline, 61' AGL/767' MSL. Terrain 1759' from DER, 2' right of centerline, 722' MSL.

Rwy 18: Rising terrain beginning 135' from DER, left and right of centerline, up to 670' MSL. Tree, and poles beginning 536' from DER, left and right of centerline, up to 46' AGL/701' MSL. Poles, tower, and trees beginning 1483' from DER, left and right of centerline, up to 64' AGL/749' MSL.

Rwy 24: Tree 991' from DER, 562' left of centerline, 38' AGL/642' MSL. Sign 2394' from DER, 1018' left of centerline, 54' AGL/671' MSL.

Rwy 36: Fence, tree, and vehicles on road beginning 130' from DER, left and right of centerline, up to 28' AGL/662' MSL. Tree and pole beginning 467' from DER, 470' right of centerline, up to 63' AGL/726' MSL. Trees beginning 637' from DER, 420' left of centerline, up to 13' AGL/696' MSL. Pole and tree beginning 1353' from DER, 669' left of centerline, up to 37' AGL/739' MSL. Trees, poles, and fence beginning 1279' from DER, 492' right of centerline, up to 19' AGL/713' MSL. Terrain beginning 43' from DER, left and right of centerline, up to 794' MSL.

SE-4, 27 APR 2017 to 25 MAY 2017

SE-4, 27 APR 2017 to 25 MAY 2017