

LOC/DME I-BHB 108.3 Chan 20	APP CRS 224°	Rwy Idg TDZE Apt Elev	5200 83 83
--	------------------------	-----------------------------	---------------------------------------

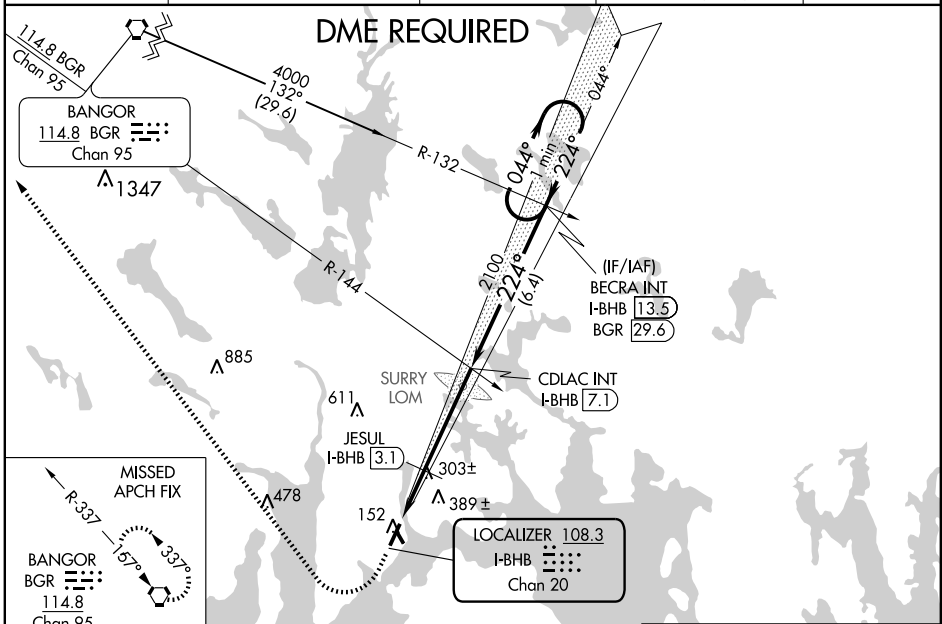
ILS or LOC RWY 22

BAR HARBOR / HANCOCK COUNTY-BAR HARBOR (BHB)

⚠ When local altimeter setting not received, use Bangor altimeter setting and increase all DA 83 feet and all MDA 100 feet; increase S-ILS 22 all Cats visibility 1/4; S-LOC 22 Cat C/D visibility 1/2 mile and Circling Cat C/D visibility 1/4 mile; increase JESUL fix minimums S-LOC 22 Cat C/D and Circling Cat C/D visibility 1/4 mile. Inoperative table does not apply to S-LOC 22 Cat C and JESUL fix minimums S-LOC 22 Cat C. When using Bangor altimeter setting; inoperative table does not apply to S-LOC 22 Cat C and JESUL fix minimums S-LOC 22 Cat C. VDP NA with Bangor altimeter setting.

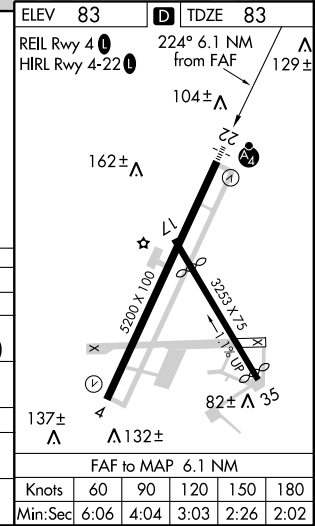
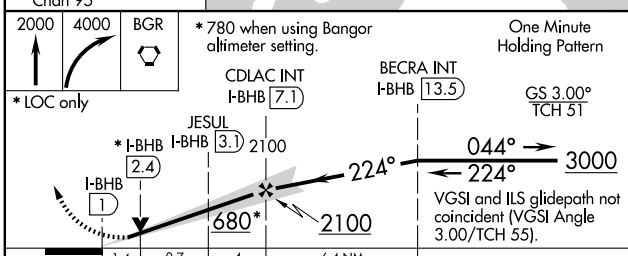
MALSF MISSED APPROACH: Climb to 2000 then climbing right turn to 4000 direct BGR VORTAC and hold.

AWOS-3 118.025	BANGOR APP CON 124.5 251.125	CLNC DEL 119.9	UNICOM 123.0 (CTAF)	122.7
--------------------------	--	--------------------------	-------------------------------	--------------



NE-1, 31 MAY 2012 to 28 JUN 2012

NE-1, 31 MAY 2012 to 28 JUN 2012



CATEGORY	A	B	C	D
S-ILS 22		283-3/4	200 (200-3/4)	
S-LOC 22	680-3/4	597 (600-3/4)	680-1 1/2 597 (600-1 1/2)	680-1 3/4 597 (600-1 3/4)
CIRCLING	680-1	597 (600-1)	700-1 3/4 617 (700-1 3/4)	700-2 617 (700-2)
JESUL FIX MINIMUMS				
S-LOC 22	580-3/4	497 (500-3/4)	580-1 1/4 497 (500-1 1/4)	580-1 1/2 497 (500-1 1/2)
CIRCLING	600-1 517 (600-1)	620-1 537 (600-1)	700-1 3/4 617 (700-1 3/4)	700-2 617 (700-2)

ILS or LOC RWY 22

WAAS CH 86305 W22A	APP CRS 224°	Rwy Idg TDZE Apt Elev	5200 83 83
--	------------------------	-----------------------------	---------------------------------------

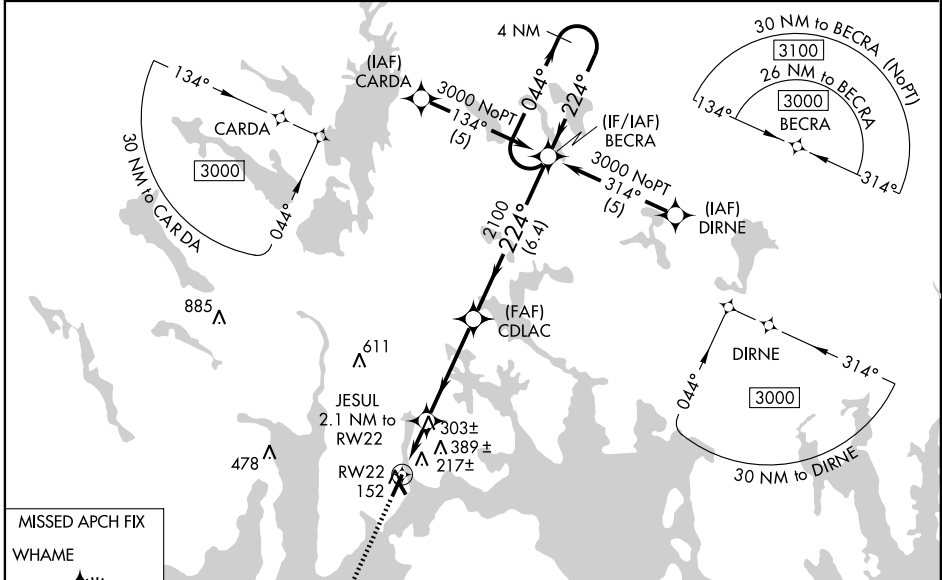
RNAV (GPS) RWY 22

BAR HARBOR / HANCOCK COUNTY-BAR HARBOR (BHB)

⚠ Baro-VNAV NA when using Bangor altimeter setting. DME/DME RNP-0.3 NA. When local altimeter setting not received, use Bangor altimeter setting and increase all DA 83 feet and all MDA 100 feet; increase LPV all Cats and LNAV/VNAV all Cats and LNAV Cats C/D and Circling Cats C/D visibilities ¼ mile. VDP NA with Bangor altimeter setting. Inoperative table does not apply to LNAV/VNAV all Cats and LNAV Cat C. When using Bangor altimeter setting, inoperative table does not apply to LNAV/VNAV all Cats and LNAV Cat C. For uncompensated Baro-VNAV systems, LNAV/VNAV NA below -1.5°C (5°F) or above 49°C (120°F).

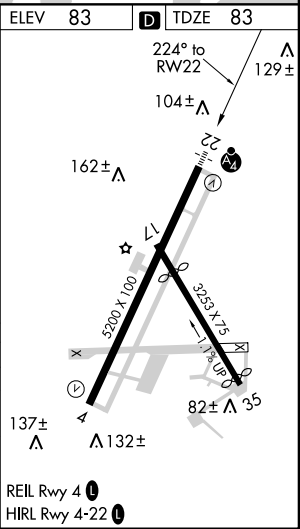
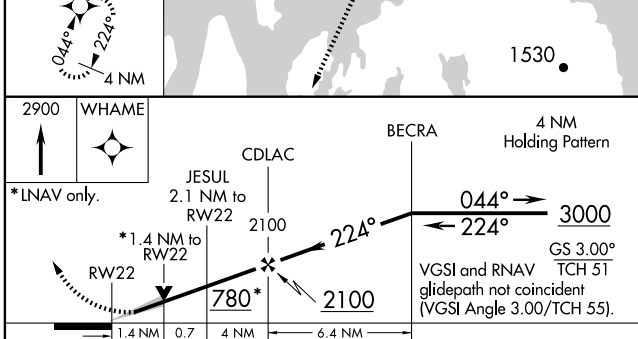
MALSIF
-
MISSED APPROACH:
Climb to 2900 direct WHAME and hold.

AWOS-3 118.025	BANGOR APP CON 124.5 251.125	CLNC DEL 119.9	UNICOM 123.0 (CTAF)	122.70
--------------------------	--	--------------------------	-------------------------------	---------------



NE-1, 31 MAY 2012 to 28 JUN 2012

NE-1, 31 MAY 2012 to 28 JUN 2012



CATEGORY	A	B	C	D
LPV DA		283-¾	200 (200-¾)	
LNAV/VNAV DA		697-2¼	614 (700-2¼)	
LNAV MDA	580-¾ 497 (500-¾)		580-1¼ 497 (500-1¼)	580-1½ 497 (500-1½)
CIRCLING	600-1 517 (600-1)	620-1 537 (600-1)	700-1¾ 617 (700-1¾)	700-2 617 (700-2)

WAAS CH 65900 W04A	APP CRS 044°	Rwy Idg 5200	TDZE 83
		Apt Elev 83	

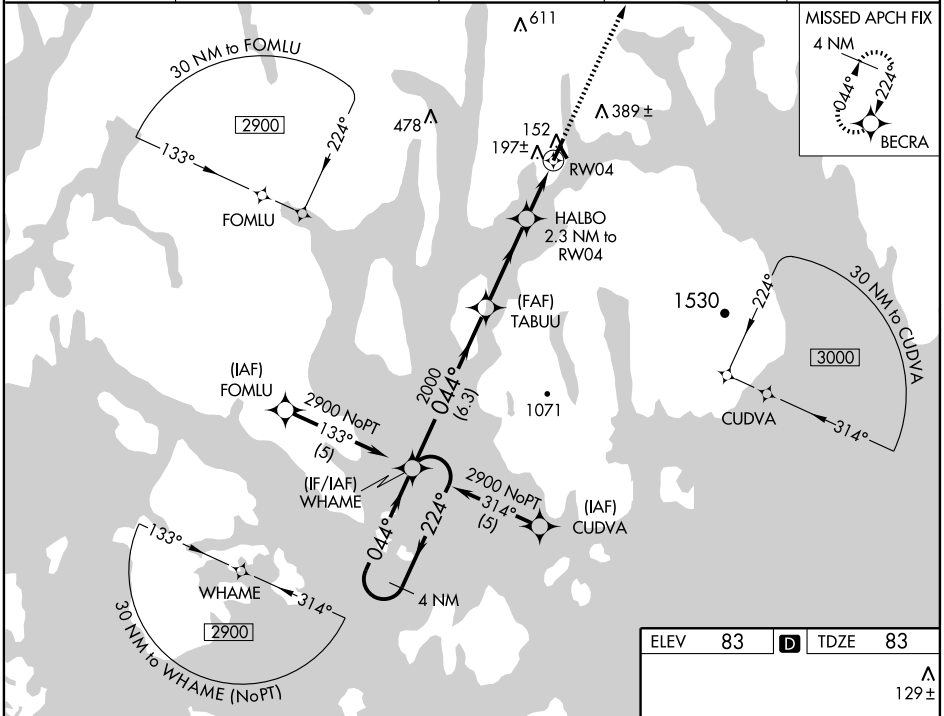
RNAV (GPS) RWY 4

BAR HARBOR / HANCOCK COUNTY-BAR HARBOR (BHB)

⚠ Baro-VNAV NA when using Bangor altimeter setting. For uncompensated Baro-VNAV systems, LNAV/VNAV NA below -15°C (5°F) or above 49°C (120°F). DME/DME RNP-0.3 NA. When local altimeter setting not received, use Bangor altimeter setting and increase all DA 83 feet and all MDA 100 feet; increase LPV all Cats visibility ¼ mile; increase LNAV/VNAV all Cats ½ mile; increase LNAV Cats C/D and Circling Cats C/D visibilities ¼ mile. Visibility reduction by helicopters NA.

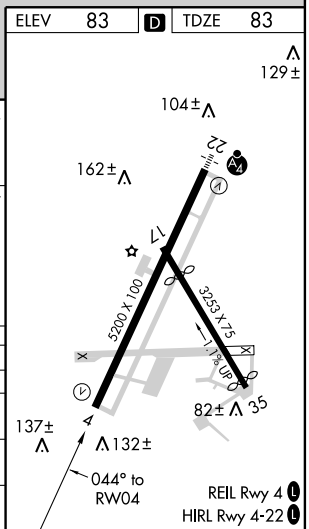
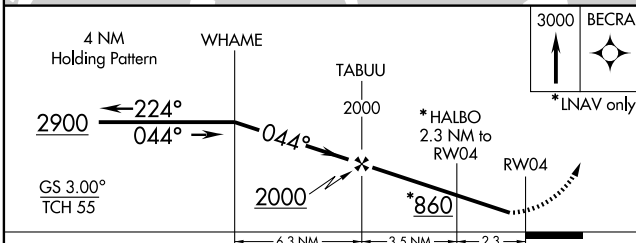
MISSED APPROACH:
Climb to 3000 direct BECRA and hold.

AWOS-3 118.025	BANGOR APP CON 124.5 251.125	CLNC DEL 119.9	UNICOM 123.0 (CTAF)	122.7 ⓪
--------------------------	--	--------------------------	-------------------------------	-----------------------



NE-1, 31 MAY 2012 to 28 JUN 2012

NE-1, 31 MAY 2012 to 28 JUN 2012



CATEGORY	A	B	C	D
LPV DA		333-1	250 (300-1)	
LNAV/VNAV DA		464-1¼	381 (400-1¼)	
LNAV MDA	480-1	397 (400-1)		480-1¼ 397 (400-1¼)
CIRCLING	600-1 517 (600-1)	620-1 537 (600-1)	700-1¼ 617 (700-1¼)	700-2 617 (700-2)

RNAV (GPS) RWY 4