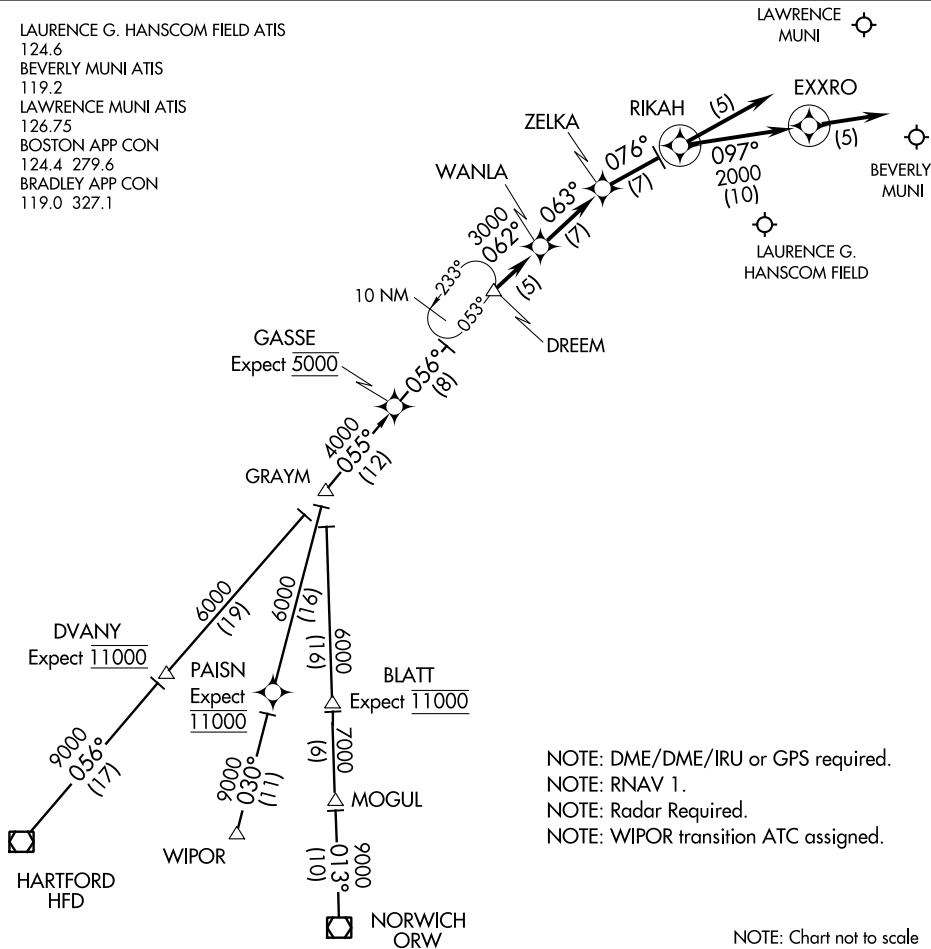
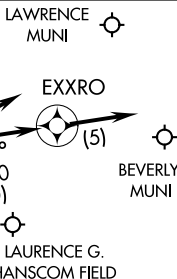


DREEM ONE ARRIVAL (RNAV)

LAURENCE G. HANSCOM FIELD ATIS
 124.6
 BEVERLY MUNI ATIS
 119.2
 LAWRENCE MUNI ATIS
 126.75
 BOSTON APP CON
 124.4 279.6
 BRADLEY APP CON
 119.0 327.1



NOTE: DME/DME/IRU or GPS required.
 NOTE: RNAV 1.
 NOTE: Radar Required.
 NOTE: WIPOR transition ATC assigned.

NOTE: Chart not to scale

NE-1, 08 JAN 2015 to 05 FEB 2015

NE-1, 08 JAN 2015 to 05 FEB 2015

HARTFORD TRANSITION (HFD.DREEM1):
NORWICH TRANSITION (ORW.DREEM1):

WIPOR TRANSITION (WIPOR.DREEM1):

LANDING BVY ALL RWYS and LANDING BED RWYS 23 & 29: From DREEM on track 062° to WANLA, then on track 063° to ZELKA, then on track 076° to RIKAH, then on track 097° to EXXR0, then on track 097°. Expect radar vectors to destination airport and final approach course.

LANDING BED RWY 11: From DREEM on track 062° to WANLA. Expect RNAV approach.

LANDING BED RWY 11: From DREEM on track 062° to WANLA, then on track 063° to ZELKA. Expect ILS approach.

LANDING LWM ALL RWYS: From DREEM on track 062° to WANLA, then on track 063° to ZELKA, then on track 076° to RIKAH, then on track 076°, expect radar vectors to final approach course.

DREEM ONE ARRIVAL (RNAV)

GRAYM THREE ARRIVAL

ST-626 (FAA)

BEDFORD, MASSACHUSETTS

LAURENCE G. HANSCOM FIELD ATIS
124.6
BEVERLY MUNI ATIS
119.2
LAWRENCE MUNI ATIS
126.75
BOSTON APP CON
124.4 279.6
BRADLEY APP CON
119.0 327.1
BOSTON CENTER
133.42 307.9

GARDNER
110.6 GDM
Chan 43

LAWRENCE
MUNI

LAURENCE G.
HANSCOM FIELD

BEVERLY
MUNI

DREEM
N42°21.71'
W71°44.57'

RNAV EQUIPPED AIRCRAFT:
Proceed direct destination.
Expect radar vectors to
approach course.
**NON-RNAV EQUIPPED
AIRCRAFT:** Expect radar
vectors to approach course.

WESTOVER
114.0 CEF
Chan 87

GRAYM
N42°06.07'
W72°01.89'

GASSE
N42°15.77'
W71°51.29'
Expect 5000

DVANY
N41°51.74'
W72°18.19'
Expect T1000

Note: Radar required.
Note: STAR applicable to aircraft
requesting 11000' and above.
Note: ATC may assign STAR to aircraft
at and below 10000'.

HARTFORD
114.9 HFD
Chan 96
N41°38.47'
W72°32.85'
L-33-34,
H-10-12

PAISN
N41°50.38'
W72°07.04'

BLATT
N41°49.62'
W72°00.92'
Expect T1000

PROVIDENCE
115.6 PVD
Chan 103

WIPOR
N41°39.38'
W72°10.63'

MOGUL
N41°43.38'
W72°00.55'

NORWICH
110.0 ORW
Chan 37
N41°33.38'-W71°59.96'
L-33-34, H-10-12

NOTE: Chart not to scale.

ARRIVAL ROUTE DESCRIPTION

HARTFORD TRANSITION (HFD.GRAYM3): From over HFD VOR/DME on HFD R-053 to GRAYM INT. Thence. . .

NORWICH TRANSITION (ORW.GRAYM3): From over ORW VOR/DME on ORW R-011 to GRAYM INT. Thence. . .

. . . . From over the GRAYM INT on HFD R-053 to GASSE INT then to DREEM INT.

At DREEM INT:
RNAV EQUIPPED AIRCRAFT: Proceed direct destination. Expect radar vectors to approach course.
NON-RNAV EQUIPPED AIRCRAFT: Expect radar vectors to approach course.

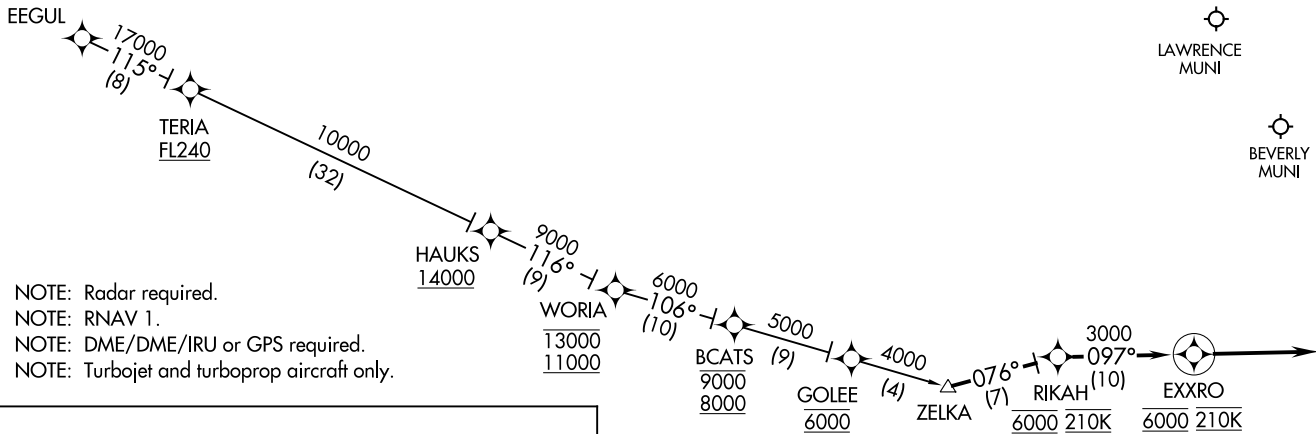
NE-1, 08 JAN 2015 to 05 FEB 2015

NE-1, 08 JAN 2015 to 05 FEB 2015

ZELKA ONE ARRIVAL (RNAV)
(ZELKA.ZELKA1) 14317

ZELKA ONE ARRIVAL (RNAV)

BEDFORD, MASSACHUSETTS

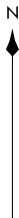


- NOTE: Radar required.
- NOTE: RNAV 1.
- NOTE: DME/DME/IRU or GPS required.
- NOTE: Turbojet and turboprop aircraft only.

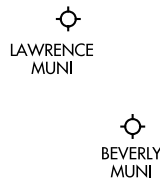
ARRIVAL ROUTE DESCRIPTION

EEGUL TRANSITION (EEGUL.ZELKA1):

From ZELKA on track 076° to cross RIKAH at 6000 and 210K, then on track 097° to cross EXXRO at 6000 and at 210K, then on track 097°. Expect radar vectors to destination airport and final approach course.



BOSTON APP CON
124.4 279.6
LAURENCE G. HANSCOM FIELD ATIS
124.6
BEVERLY MUNI ATIS
119.2
LAURENCE MUNI ATIS
126.75



(ZELKA.ZELKA1) 14317
ZELKA ONE ARRIVAL (RNAV)

ST-626 (FAA)

BEDFORD, MASSACHUSETTS

NOTE: Chart not to scale.