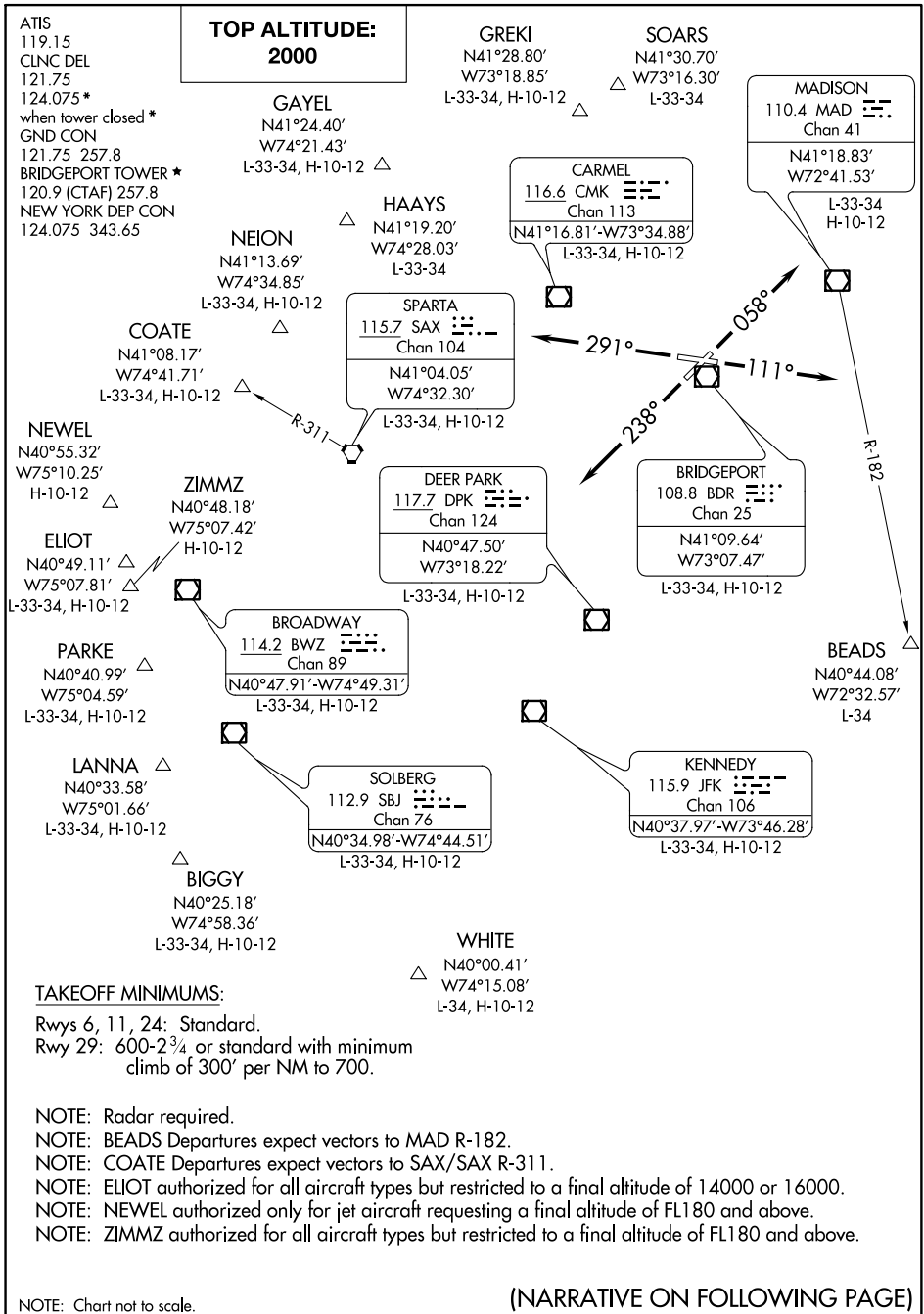


BRIDGEHAVEN NINE DEPARTURE

SL-621 (FAA)

BRIDGEPORT, CONNECTICUT



NE-1, 27 APR 2017 to 25 MAY 2017

NE-1, 27 APR 2017 to 25 MAY 2017

TAKEOFF MINIMUMS:

Rwys 6, 11, 24: Standard.
 Rwy 29: 600-2¾ or standard with minimum climb of 300' per NM to 700.

NOTE: Radar required.

NOTE: BEADS Departures expect vectors to MAD R-182.

NOTE: COATE Departures expect vectors to SAX/SAX R-311.

NOTE: ELIOT authorized for all aircraft types but restricted to a final altitude of 14000 or 16000.

NOTE: NEWEL authorized only for jet aircraft requesting a final altitude of FL180 and above.

NOTE: ZIMMZ authorized for all aircraft types but restricted to a final altitude of FL180 and above.

NOTE: Chart not to scale.

(NARRATIVE ON FOLLOWING PAGE)

BRIDGEHAVEN NINE DEPARTURE

BRIDGEPORT, CONNECTICUT



DEPARTURE ROUTE DESCRIPTION

TAKEOFF RUNWAY 6: Climb heading 058°, thence. . . .

TAKEOFF RUNWAY 11: Climb heading 111°, thence. . . .

TAKEOFF RUNWAY 24: Climb heading 238°, thence. . . .

TAKEOFF RUNWAY 29: Climb heading 291°, thence. . . .

. . . .Expect vectors to assigned route/fix. Maintain 2000. Expect clearance to filed altitude/flight level within ten (10) minutes after departure.

TAKEOFF OBSTACLE NOTES:

Rwy 6: Fence 14' from DER, 95' left of centerline, 17' AGL/18' MSL.

Vehicles on road beginning 79' from DER, 1' right of centerline, up to 15' AGL/25' MSL.

Rwy 11: Vehicles on road beginning 195' from DER, 127' left of centerline, up to 15' AGL/28' MSL.

Vehicles on road and poles beginning 207' from DER, 6' right of centerline, up to 73' AGL/73' MSL.

Rwy 24: Vehicles on road beginning 484' from DER, 537' right of centerline, up to 15' AGL/25' MSL.

Rwy 29: Building 555' from DER, 622' right of centerline, 57' AGL/59' MSL.

Stack 2.2 NM from DER, 275' left of centerline, 497' AGL/512' MSL.

NE-1, 27 APR 2017 to 25 MAY 2017

NE-1, 27 APR 2017 to 25 MAY 2017