

TUXXI ONE ARRIVAL

WEST PALM BEACH, FLORIDA

PALM BEACH APP CON
124.6 317.4
PALM BEACH INTL ATIS
123.75

ORMOND BEACH
112.6 OMN
Chan 73
N29°18.20'
W81°06.76'
L-21-23-24, H-8

FILBE
N28°42.14'
W80°40.60'

24000
147°
(43)

24000
147°
(37)

OBEYS
N28°10.51'-W80°17.94'

TURBOJET VERTICAL
NAVIGATION
PLANNING INFORMATION
Expect FL240.

HURDE
N28°01.51'
W80°11.55'

10000
179°
(42)

VERO BEACH
117.3 VRB
Chan 120
N27°40.71'
W80°29.38'
L-23-24, H-8

10000
143°
(29)

TUXXI
N27°19.08'-W80°08.19'
TURBOJET VERTICAL
NAVIGATION
PLANNING INFORMATION
Expect 10000.

NOTE: Turbojets and
Turboprops only.
NOTE: DME required.

PAHOKEE
115.4 PHK
Chan 101

STOOP
N27°15.19'-W80°07.88'
Expect Radar Vectors
to Final Approach
course.

WILLIAM P. GWINN

PALM BEACH INTL

PALM BEACH
115.7 PBI
Chan 104
N26°40.80'
W80°05.19'

BOCA RATON

PALM BEACH COUNTY PARK

NOTE: Chart not to scale.

ARRIVAL DESCRIPTION

ORMOND BEACH TRANSITION (OMN.TUXXI1):
From over OMN VORTAC via OMN R-147 to HURDE
INT then via PBI R-359 to STOOP INT thence...
VERO BEACH TRANSITION (VRB.TUXXI1):
From over VRB VORTAC via VRB R-143 to TUXXI
INT then via PBI R-359 to STOOP INT thence...

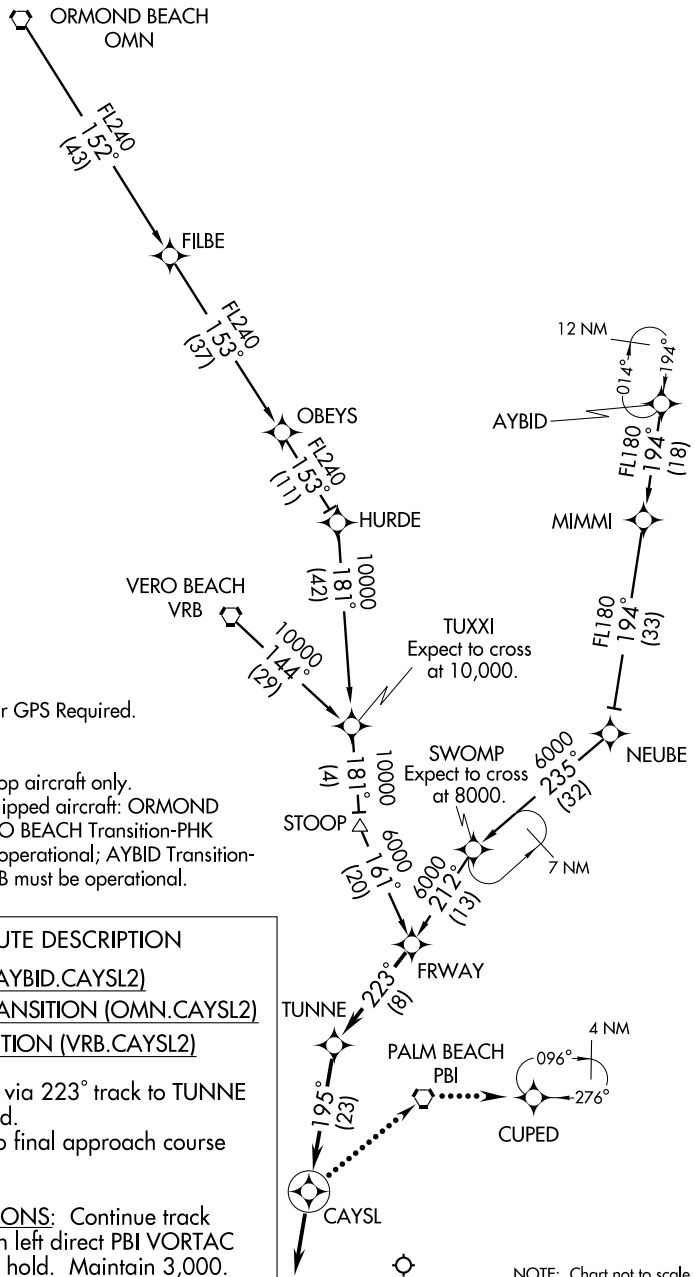
... From over STOOP INT, depart STOOP INT
heading 160° and expect radar vectors to final
approach course.

SE-3, 31 MAY 2012 to 28 JUN 2012

SE-3, 31 MAY 2012 to 28 JUN 2012

CAYSL TWO ARRIVAL (RNAV)

PALM BEACH APP CON
124.6 317.4



- NOTE: DME/DME/IRU or GPS Required.
- NOTE: RNAV 1.
- NOTE: Radar Required.
- NOTE: Turbojet/Turboprop aircraft only.
- NOTE: For Non-GPS equipped aircraft: ORMOND BEACH and VERO BEACH Transition-PHK and PBI must be operational; AYBID Transition-PHK, PBI and VRB must be operational.

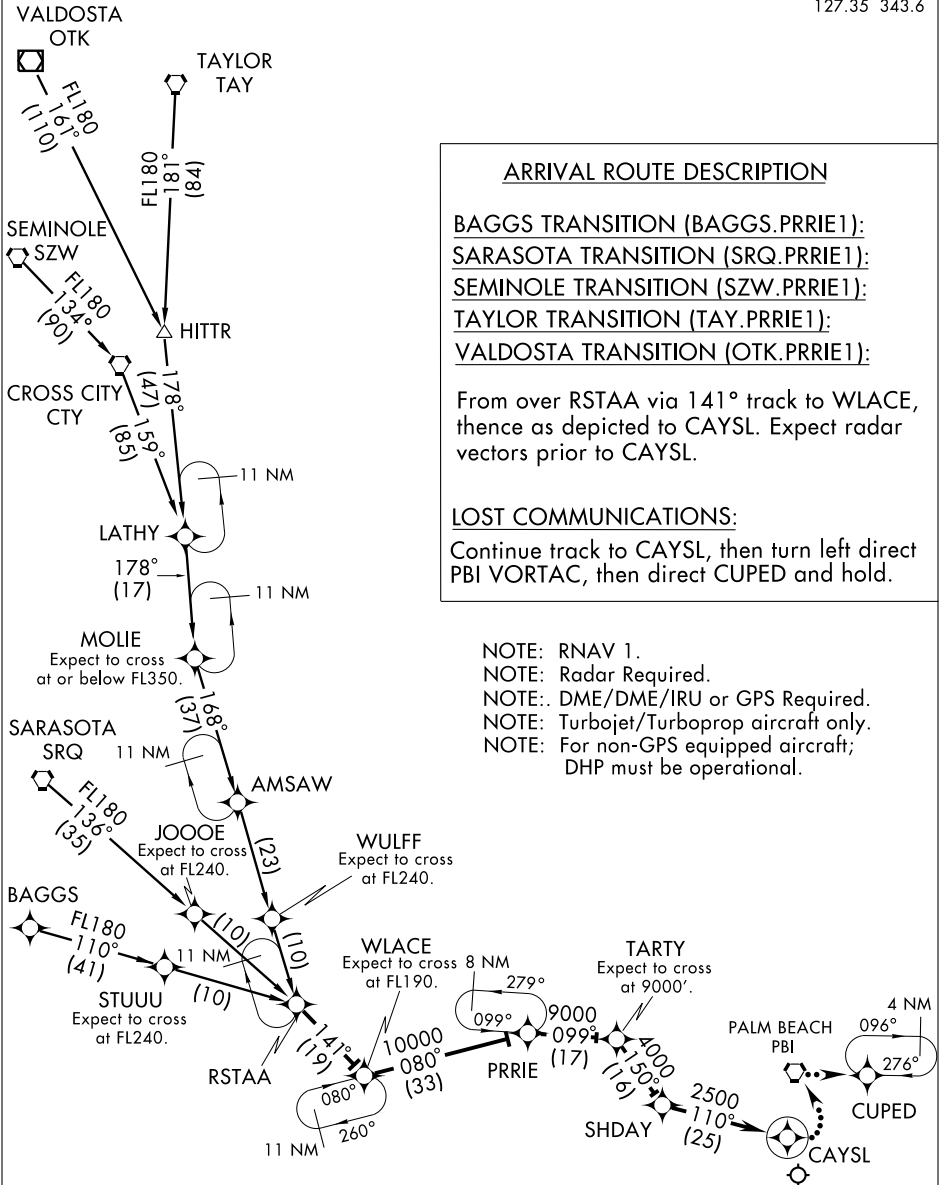
ARRIVAL ROUTE DESCRIPTION

- AYBID TRANSITION (AYBID.CAYSL2)
- ORMOND BEACH TRANSITION (OMN.CAYSL2)
- VERO BEACH TRANSITION (VRB.CAYSL2)

... From FRWAY WP via 223° track to TUNNE WP, thence as depicted.
Expect radar vectors to final approach course after CAYSL WP.

LOST COMMUNICATIONS: Continue track to CAYSL WP then turn left direct PBI VORTAC direct CUPED WP and hold. Maintain 3,000.

SE-3, 31 MAY 2012 to 28 JUN 2012



ARRIVAL ROUTE DESCRIPTION

- BAGGS TRANSITION (BAGGS.PRIE1):
- SARASOTA TRANSITION (SRQ.PRIE1):
- SEMINOLE TRANSITION (SZW.PRIE1):
- TAYLOR TRANSITION (TAY.PRIE1):
- VALDOSTA TRANSITION (OTK.PRIE1):

From over RSTAA via 141° track to WLACE, thence as depicted to CAYSL. Expect radar vectors prior to CAYSL.

LOST COMMUNICATIONS:

Continue track to CAYSL, then turn left direct PBI VORTAC, then direct CUPED and hold.

- NOTE: RNAV 1.
- NOTE: Radar Required.
- NOTE: DME/DME/IRU or GPS Required.
- NOTE: Turbojet/Turboprop aircraft only.
- NOTE: For non-GPS equipped aircraft; DHP must be operational.

NOTE: Chart not to scale.

SE-3, 31 MAY 2012 to 28 JUN 2012