

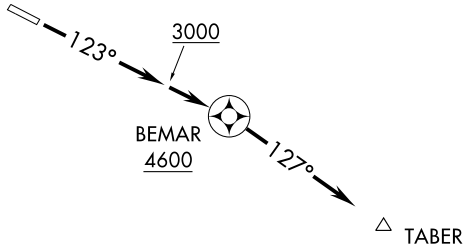
# BEMAR ONE DEPARTURE (RNAV)

AWOS-3  
133.325  
CTAF  
123.05  
ROANOKE DEP CON  
126.9 339.8  
ROANOKE CLNC DEL  
124.85

ROANOKE  
ROA

WOODRUM  
ODR

PULASKI  
PSK



NOTE: GPS required.  
NOTE: RNAV-1.  
NOTE: Radar required.

### TAKEOFF OBSTACLE NOTES:

Rwy 12: Trees beginning 19' from DER, 418' left of centerline, up to 100' AGL/2453' MSL.  
Trees beginning 242' from DER, 151' right of centerline, up to 100' AGL/2279' MSL.

### TAKEOFF MINIMUMS:

Rwy 30: NA-ATC.  
Rwy 12: 400-1¼ with minimum climb of 250' per NM to 4600  
or standard with minimum climb of 500' per NM to 3000.

NOTE: Chart not to scale.



### DEPARTURE ROUTE DESCRIPTION

TAKEOFF RUNWAY 12: Climb heading 123° to 3000, then direct BEMAR, cross BEMAR at or above 4600, then fly heading 127°, maintain 6000, expect radar vectors and clearance to filed altitude/flight level 10 minutes after departure.

(SETHY3.SETHY) 11237

SL-5475 (FAA)


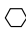
BLACKSBURG/VIRGINIA TECH/MONTGOMERY EXECUTIVE (BCB)

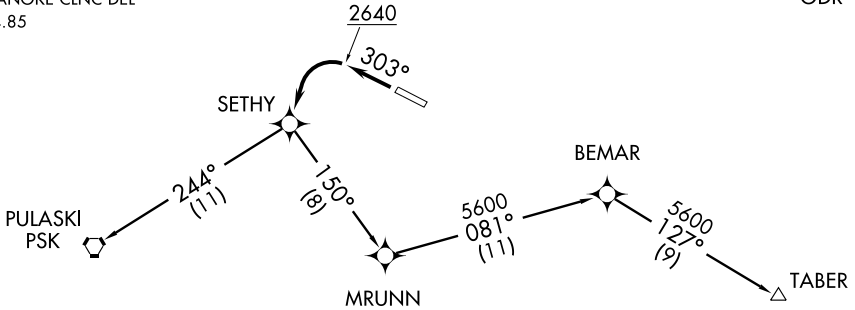
# SETHY THREE DEPARTURE (RNAV)

BLACKSBURG, VIRGINIA

AWOS-3  
133.325  
CTAF  
123.05  
ROANOKE DEP CON  
126.9 339.8  
ROANOKE CLNC DEL  
124.85

NOTE: Aircraft on TABER transition,  
do not exceed 220 KIAS until  
passing SETHY.

ROANOKE  
ROA   
  
WOODRUM  
ODR



NOTE: GPS Required.  
NOTE: Radar Required.  
NOTE: RNAV-1.  
NOTE: When in Radar contact expect vectors to filed/assigned route.

### TAKEOFF MINIMUMS:

Rwy 12: NA-ATC.  
Rwy 30: Standard with minimum climb of 300' per NM to 2640.

### TAKEOFF OBSTACLE NOTES:

Rwy 30: Rising terrain, trees and poles beginning 3' from DER, 273' right of centerline, up to 45' AGL/2165' MSL. Rising terrain, trees, and poles beginning 90' from DER, 187' left of centerline, up to 100' AGL/ 2222' MSL. Vehicle on road beginning 567' from DER left and right of centerline up to 15' AGL/ 2146' MSL. Fence beginning 697' from DER, left and right of centerline, up to 10' AGL/ 2136' MSL.

NOTE: Chart not to scale.



### DEPARTURE ROUTE DESCRIPTION

TAKEOFF RUNWAY 30: Climb heading 303° to 2640, then left turn direct SETHY, Thence . . . .

. . . .Via transition. Maintain 6000, expect clearance to filed altitude/flight level 10 minutes after departure.

PULASKI TRANSITION (SETHY3.PSK):  
TABER TRANSITION (SETHY3.TABER):

# SETHY THREE DEPARTURE (RNAV)

BLACKSBURG, VIRGINIA

(SETHY3.SETHY) 11237

BLACKSBURG/VIRGINIA TECH/MONTGOMERY EXECUTIVE (BCB)

NE-3, 31 MAY 2012 to 28 JUN 2012

NE-3, 31 MAY 2012 to 28 JUN 2012